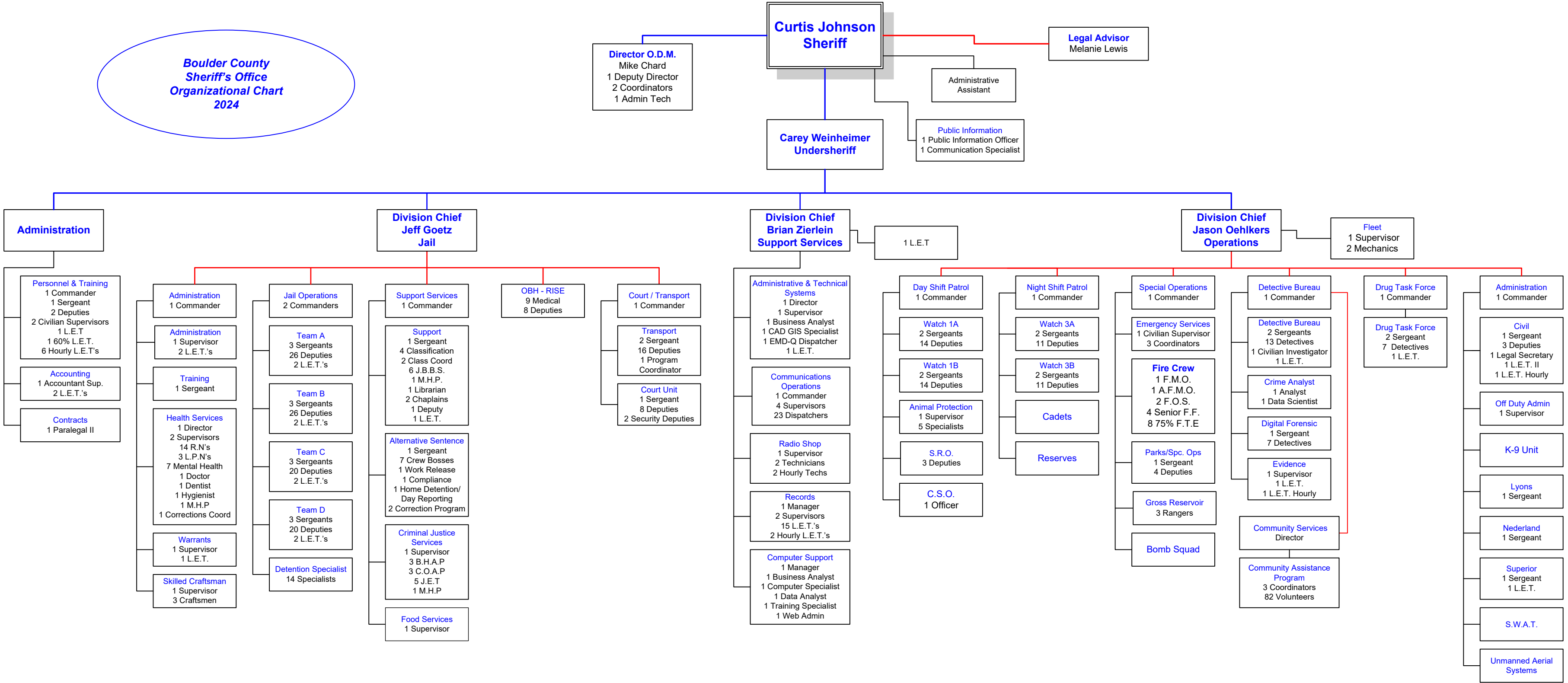


**Boulder County
Sheriff's Office
Organizational Chart
2024**



A.F.M.O. - Assistant Fire Management Officer
C.S.O. - Community Services Officer
O.D.M. - Office of Disaster Management
F.M.O. - Fire Management Officer
F.O.S. - Fire Ops Specialist
G.I.S. - Geographic Information System
L.E.T. - Law Enforcement Technician
M.H.P. - Mental Health Partners
S.R.O. - School Resource Officer