

# Accessible Trails & Sites

City of Boulder, Open Space & Mountain Parks

Topher Downham



# Welcome to the Accessible Trail Guide

One warm Boulder autumn night over 25 years ago, a friend and I decided to go for a midnight swim at the outdoor pool in his apartment complex. I decided to do a shallow dive and swim to the other side. My calculations were off and I hit my head on the bottom, breaking my neck at the lowest two cervical vertebrae. From that day on I was a quadriplegic able to move my arms but not my legs or hands.

Unable to hike into nature and wilderness as I had in the past, I started finding easier trails around Boulder where I could escape and connect with nature. Not only did pushing the wheelchair on these hikes help with my rehabilitation and strength, but also with my sanity. There was, and is, nothing better for my spirit than finding a nice pull-off along the trail with a stream flowing by, butterflies fluttering around a flower, a chickadee singing “cheese burger, cheese burger” from a branch nearby, and other critters scurrying through the lush, green, fragrant vegetation of a riparian area.

Over these last 25 years I have met a variety of people with disabilities whose lives have been enriched in similar ways by hiking our trails. This guidebook is for them and anyone else interested in connecting with and enjoying nature. Many people have helped make this guide a reality. To mention a few: Steve Mertz, Dinah Pollard, and Colleen Fitzgerald were the Trail Accessibility Project team that created the first version in the late 90’s. More recently Dave Sutherland, Frances Boulding, Emily Paulson, Jake Engelman, and Bill Wildenberg dedicated many hours of time to make this guide even easier to read and more accurate.

I hope you enjoy these trails as much as I do.  
Happy hiking!

*Topher*



*Camping at the Buckingham Campground (Fourth of July Trailhead) - see page 35.*

## Trail Ratings

Currently our ratings are based on slopes, cross slopes, firmness, obstacles, shade, and surface type. Keep in mind, a single component like surface type may cause a trail to be ranked more difficult than one would think when considering all of the trail components. For example, a lot of trails with loose road base gravel, like Greenbelt Plateau, would be pretty easy if not for the gravel. Because of that one component, we rank the trail as moderate to difficult.

## New Guidelines

Open Space and Mountain Parks (OSMP) is in the process of updating design standards for accessible trails based on federal guidelines. Design standards have been updated to incorporate the supplement to the Architectural Barriers Act Accessibility Standards (ABAAS), and the Outdoor Developed Area Accessibility Guidelines (ODAAG), developed by the Architectural and Transportation Barriers Compliance Board (U.S. Access Board).

OSMP manages a variety of trails. Every designated trail has a “designed use” and a “trail class” that drive its design and maintenance. Not all the trails in this guide were designed for accessibility and only select trails will meet the new OSMP standards. The intent of this guidebook is to provide access information on a variety of trails that provide different levels of challenge.

## Trail Conditions

OSMP lands are intricate and ever-changing as the 2013 flood showed us. Trail conditions can change overnight so we cannot promise our descriptions will always reflect the latest conditions. Please feel free to let us know if you notice any significant change in or deterioration of a trail. Information from the field is crucial for maintaining and improving our trail system.

## Gates on OSMP

Many of OSMP trails have gates at the entrances. Fencing and gates are the best way to manage cattle, agriculture, and general access to these beautiful lands. The gates are typically 41” or wider with the exception of a 35” wide gate at the Marshall entrance to the S Boulder Creek Trail. Most gates are self-closing with a spring tension around 5 lbs. The toughest gate is at S. Teller Farm Trailhead with a tension of 8 lbs to open.



## Fishing

There are some great accessible places to fish on OSMP lands. There are a variety of different opportunities for anglers: lakes and ponds hold bass, bluegill and sunfish, while the creeks are home to trout. Teller Farm has fishing piers on two of its lakes, #1 and #5. Sawhill Ponds

and Coot Lake have nice fishing piers and other access points on the banks. S Mesa Trail provides good access to the S Boulder Creek on the lower accessible loop. Wonderland Lake has an accessible peninsula where an angler can throw a line in. The 4th of July Trailhead has two good fishing access points on the North Fork of Middle Boulder Creek. A fishing icon on each trail page will indicate if fishing is available.

All Colorado Parks and Wildlife Fishing Regulations apply, including fishing license requirements for anglers 16 and older, and special catch size limits posted on-site. For more info on regulations, go to: [wildlife.state.co.us/fishing/Pages/Fishing.aspx](http://wildlife.state.co.us/fishing/Pages/Fishing.aspx).

## Visit Us Online for Updates...

Open Space and Mountain Parks maintains a "Visitors with Disabilities" web page, where you can find updated information about accessible trails on our land system:










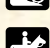

### AccessibleOSMP.org

As trail conditions change, we will update this guide book. Between reprints, those changes will be reflected in the downloadable online version available on the web page.

## ...And Videos!

On the web page, you can also **watch fun 5-6 minute video profiles** of many of these trails hiked by wheelchair user Topher Downham. Along the way he shows the obstacles encountered, local flora and fauna, and activities available at each location.

## Symbols Used in the Profiles

-  Accessible Parking
-  Accessible Parking w. Fee\*
-  General Parking
-  General Parking with Fee\*
-  Restrooms
-  Picnic Table
-  Wildlife Viewing
-  Dogs Allowed
-  Bikes Allowed
-  Horses Allowed
-  Fishing Allowed

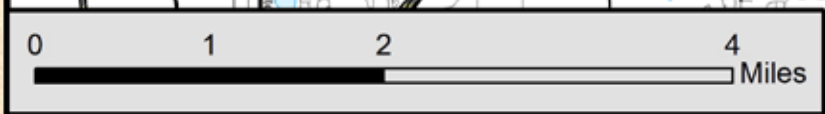
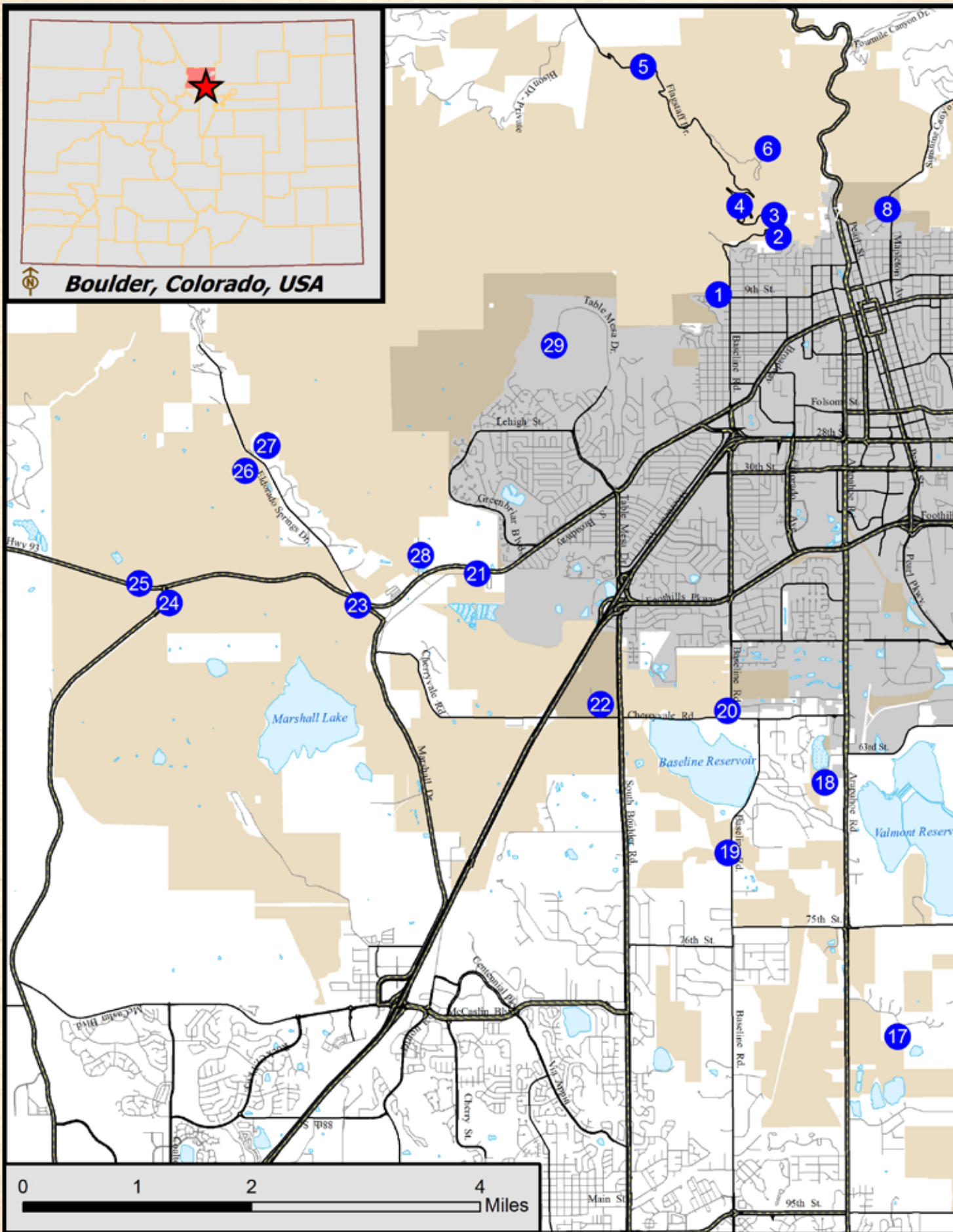
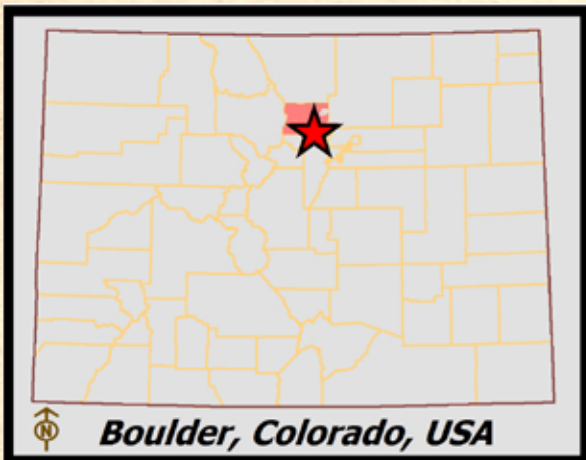
\* Cars registered in Boulder County are exempt

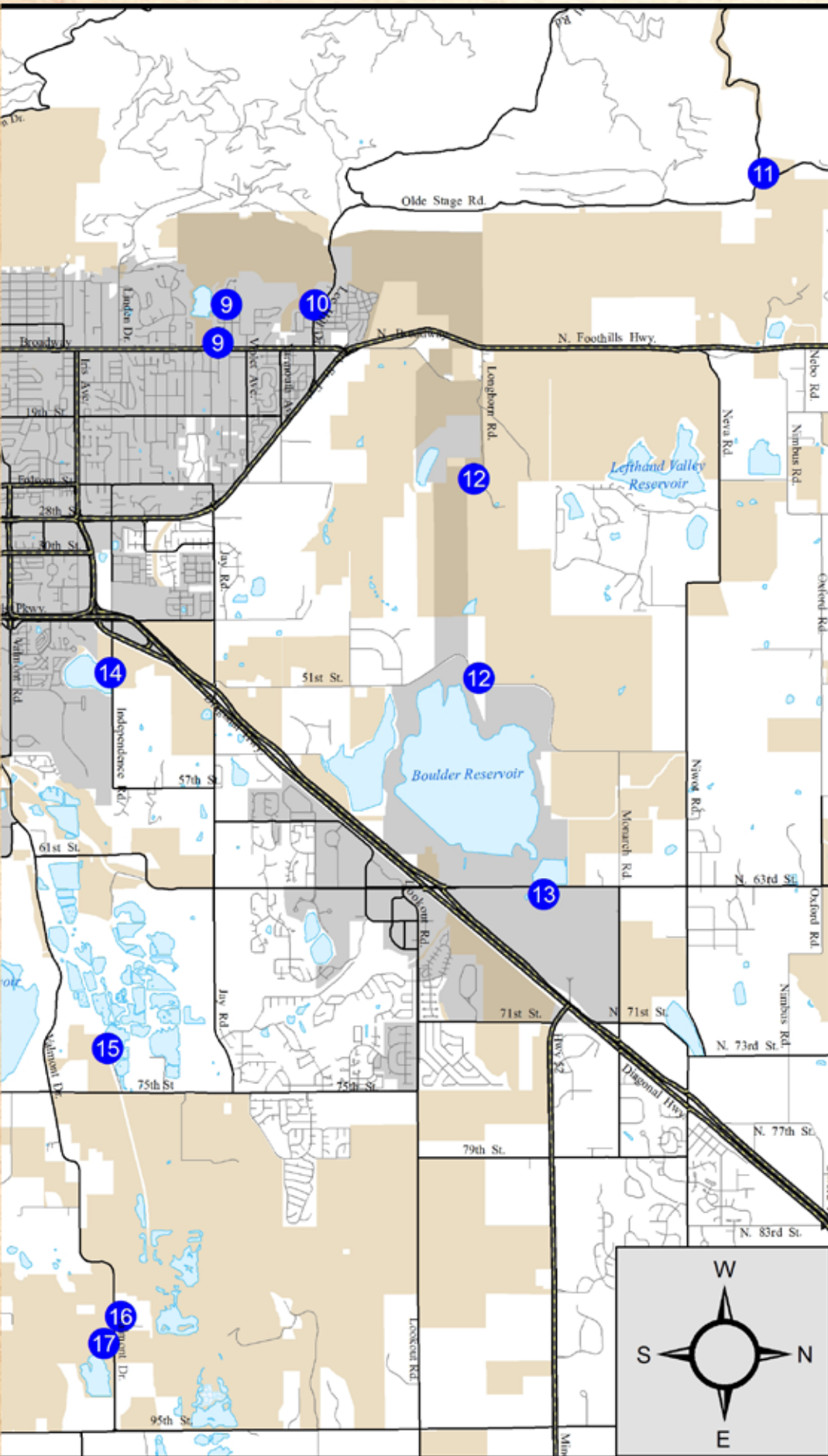
## Other Power-Driven Mobility Devices (OPDMDs)

As technology advances, OPDMDs are providing more mobility options for people with disabilities wanting to access the outdoors. OSMP allows people experiencing disabilities to use OPDMDs, including electric-assisted cycles and handcycles. We are currently working on policies and objectives to provide a safe and enjoyable experience for all trail users. As this moves forward, OSMP will provide information on our website about these policies and the trails that work best for OPDMDs. Until then, please be prudent and research trails to see if they are safe to navigate your mobility device before heading out.

## Parking and Parking Fees

You will notice a parking icon on the trail pages. Some icons have a dollar symbol indicating a fee for parking. The fee is only for vehicles registered outside of Boulder County. Local vehicles may park free. A wheelchair symbol on the icon indicates that there are designated parking spots for people with disabilities at the location.





## Boulder-Area Accessible Trails

- 1 Ranger Cottage
- 2 Panorama Point
- 3 Halfway House
- 4 Crown Rock
- 5 Lost Gulch Overlook
- 6 Flagstaff Summit
- 7 The Peoples' Crossing
- 8 Centennial
- 9 Wonderland Lake
- 10 Four Mile Creek
- 11 Buckingham Park
- 12 Boulder Valley Ranch
- 13 Coot Lake
- 14 Cottonwood
- 15 Sawhill Ponds
- 16 White Rocks Trail
- 17 Teller Farm
- 18 Sombrero Marsh
- 19 Dry Creek
- 20 Bobolink
- 21 South Boulder Creek (via Marshall Road)
- 22 Cherryvale
- 23 Marshall Mesa
- 24 Greenbelt Plateau
- 25 Flatirons Vista
- 26 Doudy Draw
- 27 South Mesa
- 28 South Boulder Creek West
- 29 NCAR
- 30 Buckingham Campground (4th of July Trailhead)

### OSMP Managed Accessible Trails

- Very Difficult
- Difficult
- Moderate
- Easy

### Public Land

- OSMP Ownership
- Boulder, CO City Limits

## Fabulous Flora and Fauna

Using this guide, you can visit sites that support a remarkable diversity of plant and animal species that occur across many different habitats. The wildlands around Boulder provide a haven for many rare species as rapid development destroys much of the remaining wildlife and plant habitat on the Front Range.



Bill May

*The entire world population of Bell's twinpod flowers exists on a handful of sites along the Front Range. It is protected on OSMP.*

Boulder County is located at the junction where the Great Plains end and the Rocky Mountains begin. The land rises abruptly from 5,000' above sea level to over 14,000'. As a result, we have an unprecedented concentration of plants and animals within a small area.



Bill May

*Calypso orchids grow in shady forested locations.*

Botanists estimate that there are over 700 species of trees, shrubs, flowers, grasses and ferns on OSMP. Plants left over from the last Ice Age occur on some parts of OSMP, including the only stand of paper birches and only known white adders' mouth orchids in the entire state. The Ute ladies' tresses orchid (see p. 27) is listed as "Threatened" under the Endangered Species Act.

*Abert's squirrels are often glimpsed in old-growth ponderosa pine forests.*



Ilan Kelman

Boulder County has more mammal species than all of Kansas or Nebraska. At least 59 mammal species have been documented on OSMP, including the Preble's meadow jumping mouse (see p. 33), which is listed as "Threatened" under the Endangered Species Act.

OSMP's breeding birds include such rarities as golden and bald eagles, peregrine and prairie falcons, wild turkeys, goshawks, and flammulated owls. Bobolinks, another vanishing bird, nest in our wet hay meadows each spring. Surveys for breeding bird diversity and habitat across nearly 1800 sites in Colorado found that the Boulder area was the richest location in the whole state with 101 breeding bird species.



Daren O'Brien

*Burrowing owls still show up to breed in a few of our prairie dog colonies.*

The Front Range has the fourth richest butterfly diversity in the United States, due to a compact collection of different habitat types found here.

Tallgrass prairie (see p. 33) is one of the most endangered vegetation types in the world. OSMP preserves some of the most significant tallgrass prairie remnants in Colorado.

Enjoy the knowledge that your OSMP lands are a biological box of treasures!

*Hops-feeding azure, one of Colorado's rarest butterflies.*



Christian Nunes

# 1 Chautauqua Ranger Cottage

## Quick Facts

- Rating: easy
- Surface: pavement, wood
- Width: Avg: 6' Min: 3' 3"
- Cross slope: Avg: 0% Max: 8%
- Grade: Avg: 0% Max: 7%  
(11% on sidewalk to the east of Ranger Cottage)
- Picnic: 1 table (easy)
- Shade: many shade trees



Dave Sutherland

Staff at the Ranger Cottage offer free maps and brochures as well as safety tips and recommendations for hikes. The cottage is also a museum, with mounted animals representing the area's fauna, interpretive displays, and hands-on nature activities for kids.

## Getting There

The Ranger Cottage and Chautauqua Trailhead are located across from Grant Place on Baseline Rd. west of Broadway in Boulder, on the west side of Boulder's Chautauqua Park.

## Site Notes

The Chautauqua Ranger Cottage is the hub of OSMP activity and information. The trails aren't very accessible here, but the cottage is. The best accessible parking is across from the Ranger Cottage on Clematis Drive. Across Kinnikinnick Rd. is an easy path that takes you up to the porch of the Ranger Cottage.

A ramp with a 7% grade takes you to the rock garden, the trailhead, and an amazing view of the Boulder's towering Flatirons rock formations. A shady picnic table is located in the rock garden for a pleasant lunch outside.

## Culture and History

In the late 1800's the Texas Board of Regents started a summer school for teachers in a cooler climate. Boulder was chosen for the Texas-Colorado Chautauqua because of its mountainous location and healthy environment. Activities, concerts, lodging, and dining are still available at the Colorado Chautauqua.

The Ranger Cottage was completed in 1984. The design combines Chautauqua's turn of the century historic spirit and mountain ranger rustic detailing.



## Activities & Facilities



Bring a camera for photos of Boulder's signature Flatirons.

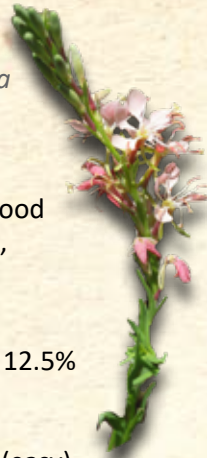
Steve Mertz

## 2 Panorama Point

### Quick Facts

Rating:	easy-difficult
Surface:	crusher fines, wood
Width:	Avg: 6' Min: 5'
Cross slope:	Max: 6%
Grade:	Avg: 7% Max: 12.5%
Picnic:	3 tables, 1 grill
Structures:	scenic overlook (easy)
Restrooms:	1 set (most difficult) across the road in the Halfway House Historic Site

Scarlet gaura



Anish Palekar

Experience incredible views of Boulder and the plains beyond. Around the holidays, the city's light display is particularly colorful and impressive!

### Getting There

Panorama Point is on Flagstaff Rd. near the Flagstaff House Restaurant west of Broadway in Boulder, about 0.8 mile up from Chautauqua Park.

### Site Notes

Panorama Point provides a spectacular view of Boulder and beyond. Because of the view and its convenient location adjacent to Flagstaff Rd., the site attracts many tourists and locals. The scenic overlook includes a sizeable wooden, raised-edge platform with a railing that has a partially cut-out section so that those using wheelchairs can have an unobstructed view. There is also a bench with back support on the platform. There are three attractive picnic sites with shade located about 150' from accessible parking. All tables are pedestal style and one of the sites has a grill. A lookout bench is near the second picnic table. The crusher fines access route connecting the picnic areas to the overlook has an average running slope of 8% for 100' with a maximum grade segment of 12.5% for 15'.

### Hard Spots

The 12.5% grade for 15' at the beginning of the picnic table access trail can be intimidating to people using wheelchairs. The rest of the trail is a 9-10% grade. Sometimes the access trail and the north side of the parking lot get some washed out areas that make it difficult in a wheelchair.

### Habitat

Mountain lions inhabit this area. Coyotes, foxes, mule deer, and raptors are commonly sighted. During summer months, watch for butterflies like tiger and pale swallowtails, fritillaries, and painted ladies.

### Culture and History

In 1919, the Lions Club erected Panorama Park Shelter House (now Halfway House) on Flagstaff Mountain and donated it to the City of Boulder; this began a half-century of the Club providing park facilities to the city.



### Activities & Facilities



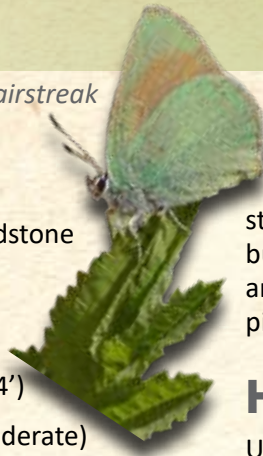


# 3 Halfway House

*Bramble hairstreak*

## Quick Facts

- Rating: easy-moderate
- Surface: crusher fines, inlaid sandstone
- Width: Avg: 4' Min: 3'
- Cross slope: Avg: 1% Max: 4.5%
- Grade: Avg: 8% Max: 12.5% (4')
- Picnic: 3 tables, 1 grill (easy-moderate)
- Structures: shelter with patio
- Restrooms: 1 set (most difficult)



The shelter features a large stone patio with a stone wall surrounding it. There is a large cut out section facing south and portions of the wall have built-in stone benches facing north. Outside on the east of the building is a sizable picnic area with a double 2' high grill and 2 picnic tables. The only shade you'll get over the picnic area is in the late afternoon.

## Hard Spots

Unfortunately, the only way to get into the stone shelter building is via steps. The interior has a number of picnic tables and a raised platform with a fireplace and is only opened by request for special events. The restrooms are not accessible. They are about 223 yards away across a steep, single track trail and have no accessibility features.



Greg Joder



OSMP image

*This picturesque stone picnic shelter offers spectacular views of Boulder and an easy-to-reach flagstone patio.*

## Culture and History

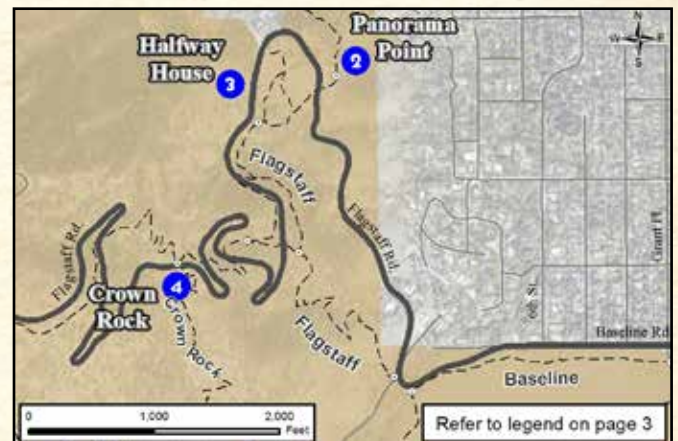
Originally constructed by the Lions Club of Boulder in 1919, the Halfway House was the first public picnic shelter in the Boulder Mountain Parks. The Civilian Conservation Corps (CCC) rebuilt the Halfway House and restroom in 1935 after the re-alignment of the road. The building is an end-gable stone structure with part of the building constructed into the hillside.

## Getting There

Halfway House is on Flagstaff Rd. directly across from the Flagstaff House Restaurant west of Broadway in Boulder.

## Site Notes

This unique stone shelter is just up the hill from Panorama Point and across the road from the Flagstaff House Restaurant. There is a lovely, access trail about 120' long made of crusher fines that connects the shelter to the parking lot. On the western end near the parking area there is a shaded picnic table (the only shade at this site) and a bench. The path is bordered with timbers and maintains a minimum width of 4'6" with an average grade of 6%.



## Activities & Facilities



# 4 Crown Rock

## Quick Facts

- Rating: easy-difficult
- Surface: crusher fines
- Width: Avg: 4' 6" Min: 3' 3"
- Cross slope: Max: 9% to bathroom
- Grade: Avg: 2% Max: 17.7% for 4' to bathroom
- Picnic: 1 table (easy)

Cliffrose



## Habitat

Black bears and mountain lions inhabit this area. Many other wildlife species are common including birds of prey, mule deer, and coyotes. Red-tailed hawks and foxes are sometimes seen.



Paul Aiken

## Getting There

Crown Rock is located approximately 2 miles up Flagstaff Road on the left side of the road.

## Site Notes

Crown Rock is a beautiful rock climbing and bouldering spot just off of Flagstaff Rd. The parking lot has 1 disabled parking spot about 70' from the restroom. There is a 7-9% slope to the restroom with a couple of 2' sections at 12.5%. The beginning is sometimes rutted out so be careful. The picnic table is 230' from the parking lot on a fairly smooth trail with a maximum grade of 6% and some obstacles nearly 4" tall.



Frank Beck

## Culture and History

Crown Rock is made of the same stone that makes up the Flatirons: 280 million year-old Fountain Formation sandstone. A long-vanished mountain range was once located to the west of Boulder. As these mountains

gradually eroded, sand and gravel washed down gullies and spilled out onto the plains, creating large fan-shaped piles of debris. Look closely at the stone that makes up Crown Rock. Can you find the banded layers of sand grains and pebbles deposited here by floods roaring out of those ancient mountains?

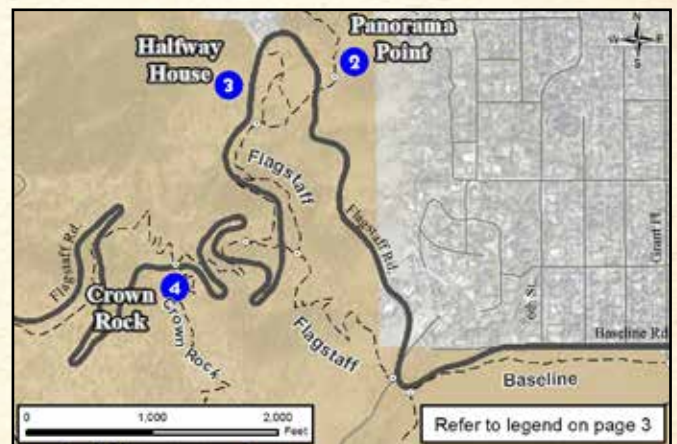
*Bouldering, a style of rock climbing that doesn't use ropes or harnesses, is popular at Crown Rock.*



OSMP image

## Hard Spots

Maximum cross slope is 16% while crossing the bathroom trail. There are a couple of 2-4" roots and rocks to negotiate along the trail. The trail does not have curb protection on the downhill side but does have a fence for some security. There is a 6% cross slope at the picnic pad plus some severe erosion. After the table, the trail gets a little rough for wheelchair users.

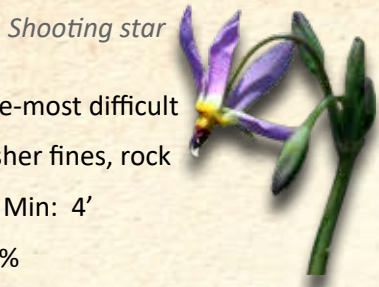


## Activities & Facilities



# 5 Lost Gulch Overlook

## Quick Facts



- Rating: moderate-most difficult
- Surface: dirt, crusher fines, rock
- Width: Avg: 4' Min: 4'
- Cross slope: Max: 10 %
- Grade: Avg: 6% Max: 14.5%
- Picnic: 3 tables (difficult - most difficult)
- Structures: scenic overlook

## Getting There

Lost Gulch is approximately 4 miles up from the base of Flagstaff Rd. west of Broadway in Boulder.



Heidi Seidel

## Site Notes

Lost Gulch is a scenic overlook and picnic area that has a spectacular view of the Continental Divide and the Indian Peaks Wilderness. The entire packed-dirt parking lot has no defined parking spaces. Since the slope for parking ranges from 1.5-14.5%, be choosy about where you park. Under the big ponderosa pine on the west side of the lot is the best place to park. There is access to a scenic overlook deck facing northwest from here. The 80' trail has a max grade of 10.5% and a max cross slope 5.2%.

## Hard Spots

Trails meander to picnic tables, benches, and viewing points. Unfortunately they are not very accessible by wheelchair unless you have a lot of assistance. Most of the picnic tables are difficult to reach. At the east end of the parking lot there is a 60' bumpy access route with a 9-12% grade leading to a standard picnic table. The table pad is about 20' off the route and has up to a 10% grade. Leg room under table ranges from 25-27".

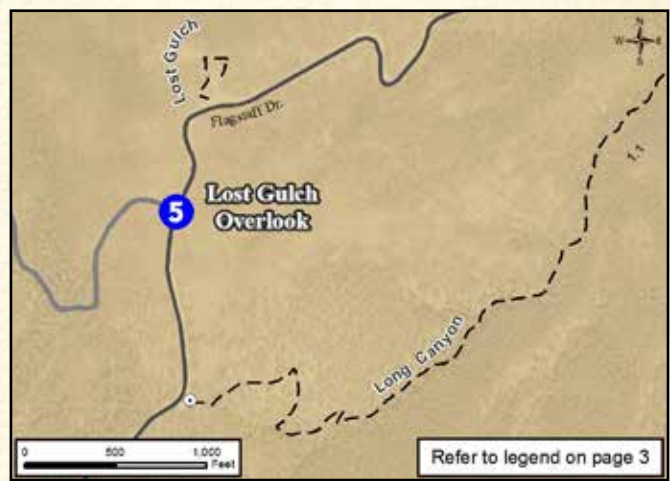


Frank Beck

*Wood lilies, a rare Eastern flower seldom seen in Colorado, can occasionally be found in Lost Gulch.*

## Habitat

The wooded area below the overlook is part of the Western Mountain Parks Habitat Conservation Area (HCA). Rare moisture-loving plants, common in the cool forests of the East, maintain a tenuous presence here as a last remnant of once-vast Ice Age forests. Ferns, orchids and moss-covered rocks find a refuge in Boulder's arid climate.



## Activities & Facilities



# 6 Flagstaff Summit

Kinnikinnik

## Getting There

The turnoff leading to the summit area is located 3.2 miles up Flagstaff Rd. from Chautauqua Park. The summit area features a number of sites including scenic overlooks, picnic and assembly areas, a nature center, and a historic amphitheater. Many of the sites can be reserved for special events by calling 303-441-3440 or visiting the City of Boulder Open Space and Mountain Parks website. Flagstaff Summit Rd. (the access road to the site) is open from May 1 through October 31. All parking areas and roads are paved.



## Ute/Sensory Trail

- Rating: moderate-difficult
- Distance: 0.4 mile
- Surface: crusher fines, hard pack
- Width: Avg: 6' Min: 32"
- Cross slope: Avg: 3% Max: 5%
- Grade: Avg: 6.5% Max: 15% for 5'
- Picnic: 2 tables (easy), 1 grill (easy)

## Trail Notes



Dave Sutherland

The Sensory Trail gives hikers a low vision experience in the outdoors. Blindfold friends and take them on this signed trail, stopping at each station. Stations are designed to focus on sensations other than sight that can be used to

connect with nature. Enjoy the outdoors through smell, sound, and touch. Signs are also in Braille for low vision hikers.

## Hard Spots

The 700' Sensory Trail starts at an 8% grade and 5% cross slope for about 100'. It then flattens to less than 5% grade on the loop. Hikers can leave the Sensory trail and continue on the Ute Trail for .3 mile to the top. Ute is difficult in some places including a 15% grade for 5', a 12-13% for 23', and an 8-9% grade for 60'. The view at the top is worth the hike though!

## Culture and History

The Sensory Trail was designed in 2005 with input from local groups that deal with disabilities such as the Center for People with Disabilities and the Disabilities Task Force, as well as individuals with visual impairments.

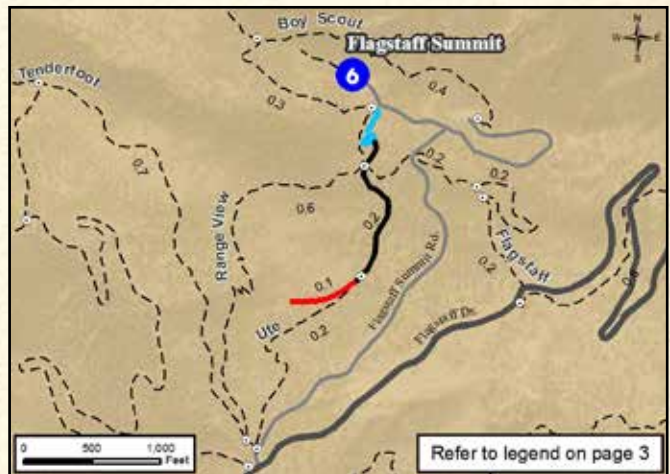
## Other Sites

*Artist Point (moderate-difficult)*

This westernmost site is about 40' from parking and has a rocky, dirt path with a narrow section of 33" leading to two picnic tables with no extensions. The other tables are not accessible due to steps. It's a beautiful spot nestled among pine trees with views of the mountains.

*Picnic pull off (moderate)*

Adjacent to the road is a dirt pull-off with access to two shaded picnic tables and a grill across the road. The area is nearly level but has limited maneuvering space.



## Activities & Facilities



### *Wood Shelter/Large picnic area (easy-moderate)*

This site can be reserved for special events. From the same parking lot and path access as the Ute/Sensory Trail (above), there is a dirt/pine needle route with a grade of 4-6%. This path is about 140' long and leads to a large outdoor picnic area and shelter with a concrete floor and no walls. Underneath the shelter are 2 picnic tables and beside the shelter are 2 pinwheel-style picnic tables, and a 4-person table. The entire surface is dirt with a gentle slope. At the eastern end of this site is another single track access route (most difficult) leading to a smaller parking lot.

### *Stone Shelter/Assembly Area (moderate-difficult)*

This site can be reserved for special events. Across the road from the eastern lot for the Wood Shelter is the Stone Shelter and assembly area. This small shelter has steps leading to its narrow entries and contains two picnic tables with minimal room for maneuvering. Adjacent to the shelter, however, is a very large, exposed assembly area with many long rows of concrete based picnic tables. The whole area has a packed dirt base on a slope of 2-6%. Small embedded rocks, roots, and steps between rows present some negotiating challenges, but many may find it manageable. This site offers a nearly 360 degree view.

### *Main parking lot (easy-moderate)*

Although there are no designated spaces in this lot, there are ample regular spaces available over a 0-2% slope. At the eastern end of the lot is a viewing bench (moderate) which faces Boulder. This main lot is connected to a loop drive which begins by the Flagstaff Nature Center.

### *Flagstaff Nature Center (easy)*

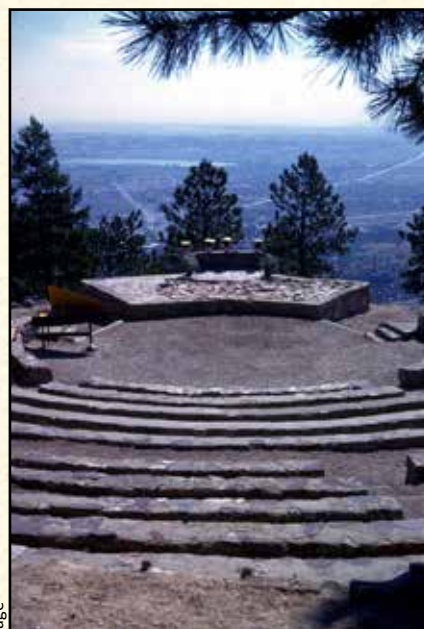
These two sites meet accessibility guideline standards and the Nature Center meets ADA structural standards. A few feet away is the access route to the Nature Center which is made of crusher fines and gently slopes to the front porch. The interior is one level and displays educational exhibits and information on local wildlife, the environment, and human impact. Just to the east of the Nature Center is a small parking lot with one designated space. Call 303-441-3440 for hours of operation and additional information.

### *Flagstaff Nature Center picnic area (moderate-difficult)*

About 40' south of the Nature Center parking lot are two picnic tables, one with an extension. The rough dirt path to get there has a grade ranging from 3-8%. Beware of embedded rocks, exposed roots and limited clear space around tables. There are several trees at this site which makes it desirable for shade.

### *East Picnic Area/Restroom (difficult)*

About 200' from the Flagstaff Nature Center is a great picnic area on the north side of the road and a restroom (difficult) on the south. There is a small parking area with one disabled accessible space next to an access route to the restroom. The restroom is accessible but the access route is quite difficult with a 12% grade for 40' and a max grade for 14% for a couple of feet. The picnic area featuring two tables with extensions offers a great view and shade. The soft dirt surface provides ample maneuvering space.



*Flagstaff Summit Amphitheater (moderate)*

The easternmost feature of Flagstaff Summit, and also the main attraction, is the amphitheater. Designated as a historic site, this east-facing amphitheater was built with sandstone by the CCC between September 1933 and March 1934.

OSMP Image

It seats more than 300 people. Often used for weddings and OSMP educational presentations, the amphitheater can be reserved for special events. An accessible path into the Amphitheater is to the south of the 3 disabled parking spaces. This 6' wide crusher fines path is about 200' long with a grade of 7-8% the whole way. Nearly the entire amphitheater is exposed to the sun until late afternoon limiting shade.

# 7 The Peoples' Crossing (formerly Settler's Park)

## Quick Facts

- Rating: easy-difficult
- Distance: 100'
- Surface: concrete, dirt
- Width: Avg: 6' Min: 4'
- Cross slope: Avg: 0% Max: 3%
- Grade: Avg: 5% Max: 14.5%
- Shade: many shade trees



Canada violet

## Hard Spots

Although there is a designated parking space, it is not well designed for access to the sidewalk. The curb cut is located directly in the left front of the parking space so make sure you park as far right as possible. The access route from parking to the sites is concrete and includes a bridge with a grade of 12-14.5% for 50' leading to the bike/pedestrian path. The alternate east access requires a 10-13% climb for 100'. If you're feeling spunky and strong you may be able to navigate some of the Red Rocks Trail which can be accessed from the westernmost picnic site. You could also head west on the bike path (8-10% grade) and underpass to Eben G. Fine Park which offers a variety of outdoor recreation opportunities and an accessible restroom.

## Getting There

Settler's Park is at the junction of Canyon Blvd. and Pearl St. at the mouth of the Boulder Canyon, west of Broadway in Boulder.

## Site Notes

Settler's Park offers three picnic tables with 11" extensions at the southern trailhead for Red Rocks Trail. It is adjacent to a Boulder Creek Bike/Pedestrian connector path. It features large trees that shade most of the site and smaller trees which give it a private feeling. The distance from the parking lot to the site is approximately 100'. Surfacing is mostly dirt at a 0-2% grade.



Christian Nunes

The Boulder Creek corridor teems with wildlife. Watch for the American dipper, a small gray bird that bobs up and down while walking in the water.

## Culture and History

The first recorded settlers in Boulder came to Settler's Park on October 17, 1858. John Brierley built his home in 1871 in the 200 block of Pearl Street which is now OSMP's Settler's Park. He filled the land north and east of his home with cattle, flowers, and fruit trees including apple, peach, and pear.



Doug Goodin

Settler's Park provides views of the Red Rocks, towering sandstone cliffs on Boulder's west side.



Refer to legend on page 3

## Activities & Facilities



# 8 Centennial Trailhead

## Quick Facts

Rating: easy-difficult  
Surface: dirt, crusher fines  
Width: Avg: 3' 8" Min: 3'  
Cross slope: Avg: 2% Max: 8% for 4'  
Grade: Avg: 5% Max: 14% for 4'  
Shade: some

Fendler's  
waterleaf



## Getting There

Centennial Trailhead is located on Mapleton Ave. less than ¼ of a mile west of the mouth of Sunshine Canyon, on the south side of the road.

## Site Notes

The trailhead offers 3 picnic tables, two at the west side of the trailhead. It features large trees which shade most of the site and smaller trees which give it a private feeling. The distance from disabled parking to the site is approximately 165'. A small 250' trail follows the perimeter of the parking lot from the bathrooms to the far two picnic tables, passing another table along the way. This picnic table is about 100' from the disabled parking.

## Hard Spots

The perimeter trail is crusher fines, but some of it is loose. The trail's narrowest point is 3', but typically closer to 4'. The first part of the trail is a 6-8% hill, but at 60' it is 14% for 4'. Right around the first picnic table the trail gets rutted and is difficult to maneuver for 10' without help. Accessing the west picnic tables from the parking lot requires going up an 11-14% slope for 15'.

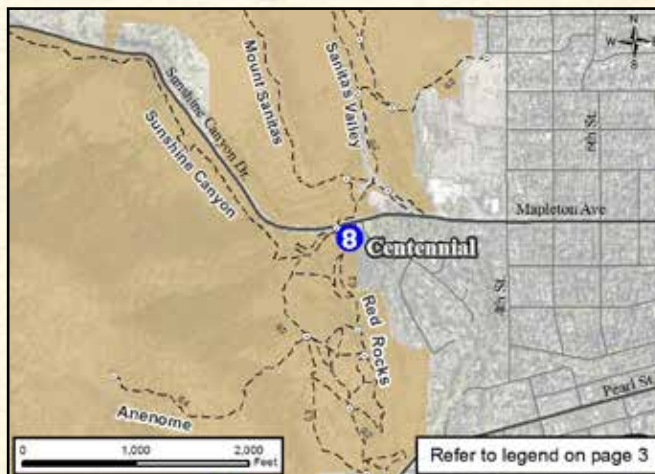
## Culture and History

In the 1890's, 4th Street and Mapleton Ave. was the site of the Boulder-Colorado Sanitarium and Hospital. Some of the original buildings still stand near the Sanitas Trail. It was one of a series of John Harvey Kellogg's Battle Creek, Michigan, Sanitariums. Kellogg was one of the leaders of a growing movement in 'health building and training' called the Western Health Reform Institute. The institute promoted 'hydro-therapy, exercise and a vegetarian diet' as the way to good health.



A colorized postcard from the Colorado Sanitarium in its heyday, probably dating from the 1920's.

While our generation has come to understand that diet and exercise are essential to one's health and well-being, the concept was brand new and somewhat controversial in the late 1800's. Kellogg was determined to change the way Americans not only ate but lived, and developed the Battle Creek Sanitarium as a place where the patient's lifestyle could be completely controlled. The Sanitarium became a popular and profitable method of spreading the word. By the turn of the century, he and his brother, W.K. Kellogg began to mass produce their healthy foods (including some cereals we would recognize today!). More Sanitas information is available at the Boulder Carnegie Library and on the OSMP website at [osmp.org](http://osmp.org).



## Activities & Facilities



# 9 Wonderland Lake

## Quick Facts

- Rating: easy-moderate
- Distance: 1.75 miles
- Surface: crusher fines, paved, concrete
- Width: Avg: 8' Min: 3'
- Cross slope: Max: 3% for 5'
- Grade: Avg: 2% Max: 13% for 50' (avoidable)
- Shade: scattered locations around lake

*Mariposa lily*



## Habitat

Fishing is popular here and is allowed from the dam and peninsula only. State fishing regulations apply. Birds of prey are common in this area. Mule deer, foxes and coyotes are also frequently seen as well as waterfowl on the lake. Mountain lions prowl the hogback ridges to the west. A wildlife sanctuary is located on the west and south sides of the lake.

## Culture and History

In 1887, James P. Maxwell and George Oliver were late arrivals to the Colorado water rights game. All of Boulder Creek's water was already spoken for so Maxwell and Oliver found two new sources of water below the Arapahoe Glacier: Silver and Island Lakes. Silver Lake Ditch was built to bring this water down to Boulder for storage. Known as Mesa Park Reservoir (1905), its name was changed to Degge's Lake, and finally Wonderland Lake. The lake was once home to a commercial fish farm, and fruit orchards bloomed just to the southeast.

## Getting There

The Wonderland Lake Trailhead is on the west side of N. Broadway just south of Utica Ave. in north Boulder. The Foothills Nature Center (a small white house) is directly to the west of the Wonderland Lake

Trailhead and parking lot. Two designated parking spots are available in the lot. Other trail access points lie on Wonderland Hill Ave., Poplar Ave., and Utica Ave. Utica Ave. is the easiest, quickest access to Wonderland Lake.

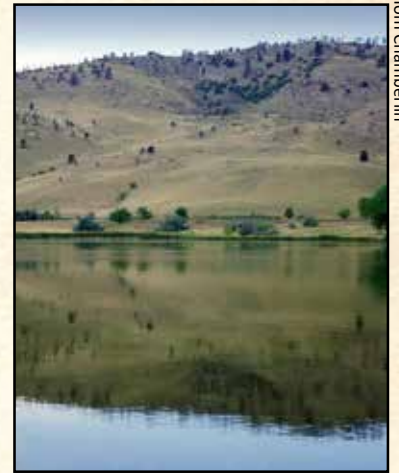
## Trail Notes

This 1.75-mile crusher fines trail starts on the south side of the Foothills Nature Center. The trail crosses a grassy field. From this point, the trail circles the lake, some of it on paved sidewalk and some crusher fines trail.

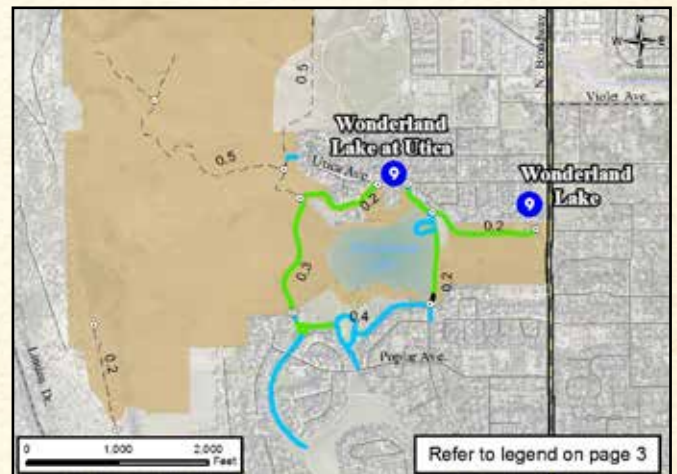
The peninsula on the northeast corner of the lake is great for fishing from a wheelchair since it brings you very close to the water.

## Hard Spots

The canal area has a steep hill of 13% for 50'. You can skirt around most of it by taking the trail out to the peninsula. By the playground on the south side of the lake, the sidewalk reaches a grade of 9% for 70'. To avoid the hill to playground, there is a narrow crusher fines shortcut path (2-4'), but it still has a 10% grade for 18' and a 5% cross slope in places.



Tom Chamberlin



## Activities & Facilities



Tom Chamberlin



Vijay Viswanathan



# 10 Fourmile Canyon Creek Trailhead

## Quick Facts

Rating:	easy-difficult
Distance:	0.75 mile
Surface:	crusher fines
Width:	Avg: 8' Min: 8'
Cross slope:	Max: 3%
Grade:	Avg: 4% Max: 13% lip
Shade:	very little

*Narrow-leaf cottonwood*



## Getting There

At the north edge of Boulder, the trailhead for Foothills Trail and Fourmile Creek Trail is located on Lee Hill Rd. 0.25 mile west of N. Broadway near its convergence with Hwy. 36. Unfortunately, due to flood of 2013, wheelchair access is no longer possible from the trailhead and is now limited to the access point near the Foothills Community Park and its dog parks. This is located north of Cherry Ave at 4510 7th St.

## Trail Notes

This crusher fines trail is an easy route with some moderate spots. It maintains an 8' width throughout its entire length. Currently, the trail starts out alongside the dog park at Foothills Community Park with grades from 6%-9%. After about 400' this trail levels out with occasional grades up to 6% for the remainder.

There are several connecting trails along the way, including the Old Kiln Trail. You would be wise to avoid it if in a wheelchair because of its grade and small ditches (water bars) in the trail to help it shed water.

## Hard Spots

The trail from the trailhead on Lee Hill Rd. is no longer accessible after 2013's flood. Also, the Foothills Trail goes all the way south to Wonderland Lake, but the last 400' section has grades from 10-17%, a cross slope up to 12%, and some ruts and loose surface material. It is very difficult in a wheelchair and not recommended.

## Habitat

Mountain lions, coyotes, mule deer, rattlesnakes, and raptors are commonly sighted.

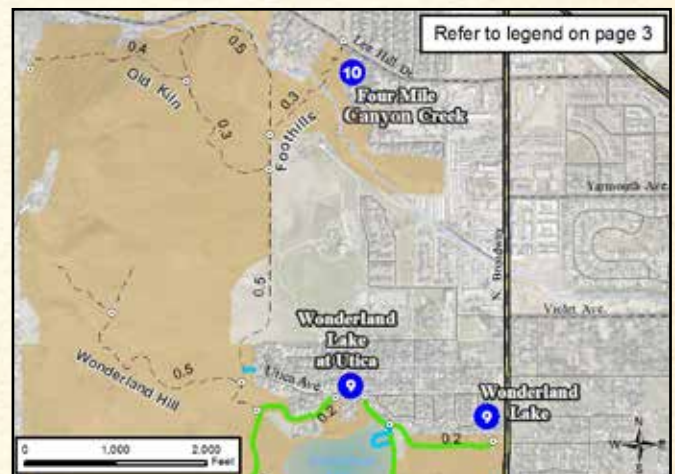


Dave Sutherland

*The historic lime kiln was nearly destroyed in 2013 by the flooding creek when water undercut the bank beneath it. Fortunately it survived intact!*

## Culture and History

This was an early Native American hunting area. The Lee Hill Lime Kiln is a historic structure from days gone by. Limestone from the local outcrop was burned to produce quicklime, an important component of cement. Lime produced here may have been used in construction of some of the University of Colorado's earliest buildings. The roughness of the kiln's construction created much waste due to over or under burned lime.



## Activities & Facilities



# 11 Buckingham Park

## Quick Facts

Rating:	easy-difficult
Distance:	700'
Surface:	crusher fines
Width:	Avg: 5' Min: 3' 6"
Cross slope:	Max: 11%
Grade:	Avg: 4% Max: 17% for 3'
Picnic:	3 tables (easy-moderate), 1 grill at closest table
Shade:	very little, some trees

Blue clematis



## Hard Spots

There is a steep section on the trail after the first picnic table that reaches a 17% grade for 3'. Fishing is popular here, but it is difficult to reach the creek in a wheelchair.

*Fritillary butterfly on a Gaillardia flower.*



Doug Goodin

## Habitat

Lefthand Creek is an ideal habitat for fish, aquatic insects, and a variety of birds. Mountain lions, bears, bobcats, and deer live in the area. Golden eagles roost in the nearby cliffs and may be seen soaring high above.

## Getting There

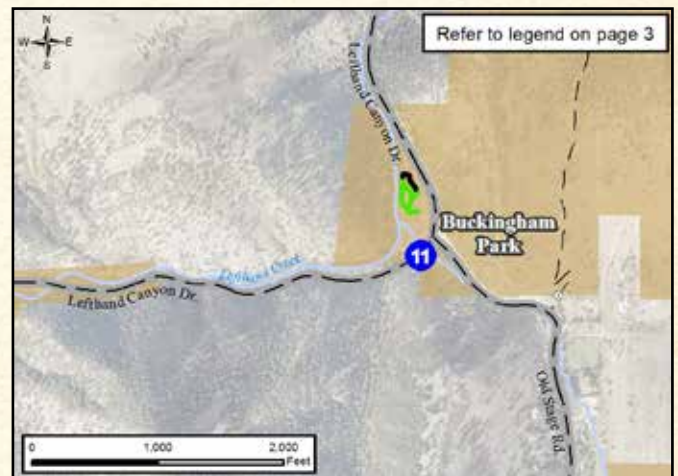
Buckingham Park is located at the intersection of Lefthand Canyon Rd. and Old Stage Rd. north of Boulder and west of Hwy. 36. From Boulder, go west on Lee Hill Rd. to Old Stage and the junction of Lefthand Canyon Dr.



Joshua Coutts

## Culture and History

Buckingham Park was donated by deed to the City of Boulder by local banker C.G. Buckingham in 1929, to be used specifically for public recreation. It is a series of old mining claims running along Lefthand Creek. C.G. Buckingham also donated Boulder Falls to the city. His nephew, C. E. Buckingham, donated the campground at 4th of July Trailhead (see p. 35).



## Site Notes

Buckingham Park is a beautiful area that sits next to Lefthand Creek. The parking lot is 50' from the restrooms and 150' from the nearest picnic table. The picnic tables have accessible ends with a roll-under height varying from 25.5" to 29". There is a 700' trail that loops around the area.

## Activities & Facilities



# 12 Boulder Valley Ranch: Eagle / Sage Trails

## Quick Facts

Rating: moderate-most difficult  
Distance: 2.6 miles  
Surface: crusher fines, road base  
Width: Avg: 10' Min: 3'  
Cross slope: Max: 10%  
Grade: Avg: 3% Max: 12% for 40'  
Shade: very little



Wax currant



Greg Joder

## Hard Spots

There are a couple of steep hills (12 – 15%) on the eastern section. The trail does not have much cover, so it can get unbearably hot in summer months. This is definitely not a trail for people looking for an easy stroll.

## Getting There

There are two trailheads for the Eagle/Sage Trail loop. The Boulder Valley Ranch Trailhead (Sage Trail) is on Longhorn Rd. east of Hwy 36 just north of Boulder. Eagle Trailhead is located off of 51st St. northwest of the entrance to Boulder Reservoir. Designated accessible parking is only available at Sage Trail.

## Habitat

Wildlife such as coyotes, raptors, waterfowl, and prairie dogs reside in this area. Vegetation is mostly grass, yucca, and cottonwoods.



Dan Fogelburg

## Culture & History

The “Silver Nickel,” an adobe brick building at Boulder Valley Ranch, was constructed in the early 1900’s and is still in use. It is a converted barn that was used as a dance hall and livery stable. Cattle graze on the property and were utilized as a weed management tool.



Klaus Girk

*Eagle Trail is a great place to see birds of prey, especially in winter. Look for bald eagles in the old cottonwood trees north of the trail.*

## Trail Notes

Starting at the Boulder Valley Ranch Trailhead, the rolling terrain of the Sage Trail goes south for 0.7 mile. At this point you reach Eagle Trail. Take the Eagle Trail to the east. Most of the trail from this point on has a 5-6% grade. Some spots can be a bit muddy and are often rutted.

Heading out of the BVR Trailhead to the north, the trail descends for 0.7 mile. The first section is a 12% drop for 20'. Most gates along the route are always open except for the gates at the trailheads which require 3 lbs. of force and are at least 36" wide.



## Activities & Facilities



# 13 Coot Lake (Parks and Recreation)

## Quick Facts

- Rating: easy-difficult
- Distance: 1.16-mile loop
- Surface: crusher fines, road base, dirt
- Width: Avg: 6' Min: 3'
- Cross slope: Max: 16%
- Grade: Avg: 0% Max: 13% for 8'
- Shade: very little; trees cover a bench 0.25 mile north of parking lot.



Snowberry

## Getting There

From Boulder, drive east on Diagonal Hwy. Turn north on 63rd St. Coot Lake Trailhead. Parking is 1 mile northwest of Hwy. 119 near the Boulder Reservoir. Additional parking is located across the street at Tom Watson Park.



Topher Downham

## Trail Notes

A wheelchair-accessible fishing pier is adjacent to the parking lot. A crusher fines trail starts from the parking lot and heads in both directions around the lake. If you head south, the trail turns into a gravel service road for about 1000' and reconnects to the crusher fines trail circling Coot Lake and the wetlands.

## Hard Spots

At the western edge of the lake, the trail undulates up and down at around a 7% grade with some rocky surface areas. The southern section is road base gravel, making it a rough ride in a wheelchair. Near southwest corner, there is an 80' long slope that runs at a 7-9% grade. Near the southeast corner, the small lakeshore trail has some brief slopes up to 13% and a few cross slopes reaching 12%.

## Habitat

This trail encircles Coot Lake and some highly developed wetlands, so there is a wide variety of vegetation and birds in the area. Mid-March is a great time to see migrating waterfowl. Prickly poppy, birdfoot trefoil, cowboy's delight, and dwarf leadplant are some of the wildflowers that grow in the area.



Wendy Marie Stuart

*The cattail marshes to the west of Coot Lake are home to the elusive American Bittern.*

## Culture and History

A former gravel weigh station is located on the service road part of the path on the south side of Coot Lake. During sweltering summer afternoons in the 1980's, this small building was used as a station for rangers to identify and ticket illegal naked bathers along the Coot Lake shoreline. These illegal naturists are gone, but the beautiful natural scenery is still here.



## Activities & Facilities



# 14 Cottonwood Trail

## Quick Facts

Rating:	moderate
Distance:	1.3 miles
Surface:	dirt and road base
Width:	Avg: 7' Min: 3'
Cross slope:	Max: 10% for 12'
Grade:	Avg: 1.2% Max: 10% for 11'
Shade:	moderate

Plains cottonwood



## Getting There

From Boulder, drive east on Iris Ave. under Foothills Pkwy. Travel less than 0.25 mile, then make a right turn on Independence Rd. The parking lot is about 0.5 mile down the road on the right side.



Frank Beck

## Trail Notes

To access the trail, cross Independence Rd. and enter through the opening in the fence. The trail starts out as a dirt path and turns to road base, dirt, and gravel maintaining a width of 8'. The trail weaves around following a line of trees and is generally flat with some grades of 1-2%. The road base makes for a very bumpy and jarring roll in a wheelchair. If any nuts and bolts are loose on your chair or walker, I would recommend taking a different trail. After crossing the bridge, the trail follows Four Mile Creek. The trail has a few rolling hills with 4-7% grades with a maximum cross slope of 8%.

## Hard Spots

The most challenging section is the 10% grade for 11' off the bridge. The other hard section has a 7% grade for 3' about 0.5 mile down the trail as you approach a ranch access road.

## Habitat

The vegetation in the area is mostly grasses and cottonwood trees (thus the name of the trail). Birds of all sorts can be seen, as well as occasional deer and lots of prairie dogs.

*Prairie dogs are vital to local ecosystems. Their burrows provide shelter to many kinds of animals, like rabbits.*



Dave Sutherland



Klaus Girk

*Many birds of prey breed on Open Space because prairie dogs provide them with an abundant food source.*

## Culture and History

The trail skirts around an 80 acre organic farm owned by the same family since 1893 when a miner purchased the land. The farm, originally 480 acres, was the first certified organic farm in Colorado. The majority of the acreage was sold to OSMP.



## Activities & Facilities



# 15 Sawhill Ponds

## Quick Facts

- Rating: moderate
- Distance: 1.85 miles
- Surface: crusher fines, road base, dirt, gravel
- Width: Avg: 8' Min: 1'
- Cross slope: Max: 7%
- Grade: Avg: 1% Max: 5%
- Shade: trees scattered along trail provide good shade stops

Western meadowhawk



## Hard Spots

The trail is 8' wide, but some sections turn into two or three gravel tracks with plant growth between. The tracks can get as narrow as 12" but are negotiable in a wheelchair by riding with one wheel in the plant growth beside the track.

## Habitat

A variety of wildlife dwells at Sawhill Ponds including muskrats, mink, beavers, herons, ducks, birds of prey, egrets, and geese. About 0.25 mile down the trail is an accessible bird blind for viewing birds. Anglers fish the ponds for bass, sunfish, bluegill, and carp. A wheelchair-accessible fishing pier extends into the pond adjacent to the gravel parking lot. Live bait is allowed in the first two ponds, but the rest require artificial lures. All state fishing regulations apply, including license requirements and catch and size limits posted on-site.

## Culture and History

The 18 ponds at Sawhill are the result of a gravel mining operation and reclamation project. Boulder Creek, now at the northwestern boundary of the ponds, has traversed the area in the geologic past. This ancient floodplain laid down great quantities of sand and gravel, and these deposits were mined for several decades until the early 1970's. When mining ceased, groundwater filled in the pits, resulting in today's wetland.



This old gravel quarry has been converted to wetlands with a multitude of ponds.

Dave Sutherland

## Getting There

Take Valmont Rd. east from Boulder. Turn north on 75th St. The Sawhill Ponds Trailhead is located on the west side of 75th St. between Jay Rd. and Valmont Rd. Turn off just north of railroad tracks. Follow the gravel road 0.25 mile until it ends at the Sawhill Ponds parking lot.

## Trail Notes

Bird watching, or just strolling along the trail, are enjoyable recreational activities in the area.

The trail is approximately 1.85 miles. It is a loop that winds among the ponds and is a combination of pea gravel, road base dirt/gravel, and sandy, fine gravel. The trail is generally flat with most grades not exceeding 2%. The steepest grade is 5% for 85' along the backside of the loop. The cross slope is negligible with the worst being 6% for about 20'.



Wendy Marie Stuart



## Activities & Facilities



# 16 White Rocks

## Quick Facts

Rating:	easy-moderate
Distance:	1.25 miles
Surface:	crusher fines, road base, dirt, sand
Width:	Avg: 7' Min: 3'
Cross slope:	Max: 9%
Grade:	Avg: 0% Max: 10% for 13'
Shade:	some near ponds, plus a few cottonwood trees

*Peach-leaf willow*



## Getting There

The White Rocks Trailhead is located about 0.75 mile west of 95th St. on the north side of Valmont Rd. just northwest of the North Teller Trailhead. Only disabled parking is available (3 spots). Other vehicles can park at North Teller. A small trail adjoins the two lots.

## Trail Notes

The trail starts off as crusher fines and maintains a width of about 5'. After about 0.5 mile, it turns into road base dirt/gravel. Maintaining a width of about 10' for the last 0.75 mile, the trail runs along a fenced-off private lake and wetland area. The trail then continues over a few short hills of no more than a 6% grade. The bumpy descent to the bridge is tough at up to a 14% grade for 14'. After the bridge the trail flattens for the next 0.25 mile where it ascends at 6% to a large cottonwood and intersects a ranch access road. At this point the trail is not wheelchair friendly as the trail narrows and heads up a steep hill.



Jack Sasson

*This trail provides gorgeous views of the distant White Rocks, ancient cliffs of Foxhills Sandstone that formed 67 million years ago, where a tropical river emptied into the shallow sea that covered much of North America.*

## Hard Spots

Just over 0.5 mile the trail turns to two track for 300'. Wheelchairs will have to put one wheel in the track and the other in the grassy median between tracks making it slow going. As the tracks end stay in the upper track as the lower one has a 9% cross slope. Be careful on the steep 14% descent to the bridge with its bumpy terrain. Pay attention on the bridge for gaps and uneven planks, followed by a grade of 10% for 13' on leaving the bridge.

## Habitat

The White Rocks Trail winds through lush farmland and a riparian area. This makes it attractive to diverse wildlife and vegetation. Bald eagles, great blue herons, Canada geese, and many other birds can be seen in the area. The White Rocks Nature Preserve supports white-tail deer, bats, coyotes, foxes, snapping turtles, and snakes.



Wendy Marie Stuart

## Culture and History

Artifact evidence suggests that the CO Militia, serving under John M. Chivington, may have mustered in the area on their march southeast where they engaged in the Sand Creek Massacre, Nov. 29, 1864. The ponds in the White Rocks Nature Preserve were previously gravel pits mined and reclaimed by the Flatirons Company. The area has a rich agricultural history.



## Activities & Facilities



# 17 Teller Lake North and South

## Quick Facts

Hawthorn



- Rating: easy-difficult
- Distance: 2.5 miles
- Surface: dirt, crusher fines, some gravel
- Width: Avg: 10' Min: 18" (avoidable)
- Cross slope: Max: 8%
- Grade: Avg: 0% Max: 8% for 43'
- Shade: very little, a few cottonwoods

## Getting There

The South Teller Farm Trailhead is located east of Boulder. It is 1.5 miles west of 95th St. on the north side of Arapahoe Rd. The North Teller Farm Trailhead is about 0.5 mile west of 95th St. on the south side of Valmont Rd. Look for the brown City of Boulder Open Space and Mountain Parks signs. Be careful not to pass the trailhead turnoffs. They are easy to miss, especially the South Teller Farm Trailhead turnoff.

## Trail Notes

The flat and easy Teller Farm Trail can be accessed from the north or south. It cuts through prairie and farmland. Because the trail is wide open, it offers some amazing views of the Front Range peaks. A wheelchair-accessible fishing pier is located on the lake nearest the South Teller Trailhead with an overgrown, difficult crusher fines trail leading to it.



Doug Goodin

At North Teller Trailhead, the Teller Lake #5 Trail ends at a wheelchair accessible overlook of the lake about 0.14 mile up the trail. The average grade is about 2%, with one steep section, 9.6% for 6' about 400' down the trail. Prairie dogs love to dig holes in the trail so keep your eyes open.

## Hard Spots

Some parts of the trail become very muddy after rainstorms. An old bridge half a mile from North Teller Trailhead is difficult to maneuver over with a wheelchair due to old boards and the 2-6" lip on each side of the bridge. There are 5 gates along the route - the 3 in the middle are usually open. The self-closing gate at the North Trailhead is 43" wide. The self-closing gate at the South Trailhead is 57" wide, with a tension of 8 lbs to open.

## Culture and History

This area is named for early landowner Henry Moore Teller. He was a U.S. Senator after Colorado became a state, and later the 15th Secretary of the Interior. While not personally involved in the Sand Creek Massacre, he did later defend the action. Teller's stance on Indian rights seems contradictory. He was opposed to the Dawes Act, which called for the end of communal ownership of Indian lands. He felt it was a strategy to take land from Native Americans. But in a contradictory move, as Secretary of the Interior, Teller approved the "Code of Indian Offenses," which forbade Native American cultural activity in the U.S.



## Activities & Facilities

Teller Lake North Trailhead



Teller Lake South Trailhead





# 18 Sombrero Marsh

## Quick Facts

*Red-tailed hawk*



- Rating: easy-moderate
- Distance: 0.4 mile
- Surface: crusher fines and boardwalk
- Width: Avg: 4.5' Min: 20"
- Cross Slope: Max: 15% for 3'
- Grade: Avg: 3% Max: 12.7% for 10'
- Shade: very little, bird blind

## Getting There



Topher Downham

Take Arapahoe Rd. east out of Boulder. Turn right/south on 63rd St. Ignore the "no outlet" signs. After a short distance the road will turn left/east and there will be a

fence on your right beyond which you can see Sombrero Marsh. Continue driving until you see a set of gas pumps on your left. At the pumps, look to the right and you will see the Sombrero Marsh Environmental Education Center beyond the fence. The Center is easy to identify by its wind turbine and the solar panels mounted on the roof. Park along the fence and enter the marsh at the opening in the fence by the large Thorne Nature Experience sign.

## Trail Notes

Several short trail loops with interpretive signs and a boardwalk skirt the eastern shore for use by the public and school groups. The boardwalk sports two viewing decks surrounded by 3" curbs, one 10' x 18' and one 20' x 8'. An accessible bird blind with a 3' high window provides stealthy bird watching opportunities for people of all abilities. An interpretive bird garden is located behind the Thorne Nature Center near the salamander pond.



OSMP Image

## Hard Spots

There are a couple of short steep sections along the trail no greater than 10%. The trail is often overgrown with vegetation making it narrow in places. A couple of sections of trail south of bird blind have some big cross slopes, but are avoidable if you stay on the opposite side of the trail.

## Habitat

Sombrero is an alkali marsh, rare in this part of the United States. It is shallow and periodically dries out, leaving mud flats that provide unique habitat for emergent vegetation and nesting aquatic birds.



Daren O'Brien

## Culture and History

Sombrero Marsh may have been the only perennial body of open water in Boulder Valley at the time of settlement. It was used as a garbage dump until 2000, when OSMP acquired the marsh and began restoring it. 55,000 cubic yards of trash were hauled out, then native alkali marsh vegetation was replanted.



## Activities & Facilities



# 19 Dry Creek

## Quick Facts

- Rating: easy
- Distance: 1.4 miles
- Surface: crusher fines
- Width: Avg: 8' Min: 3'
- Cross Slope: Max: 9% for 20'
- Grade: Avg: 3% Max: 9.5% for 20'
- Shade: very little



trees as the trail skirts along the creek. After crossing the third wooden bridge, the trail forks three ways. Straight ahead or to the left, it is an easy 0.6 mile loop. The trail has a 9.5% grade for 27' with a 6% cross slope near the lone cottonwood tree at the westernmost part of the trail cottonwood tree at the westernmost part of the trail.



Jack Sasson



Dave Sutherland

*Dry Creek is very popular with dog guardians.*

## Getting There

In southeast Boulder, Dry Creek Trailhead and parking are located on the south side of Baseline Rd. one mile east of Cherryvale Rd. (east of Hwy. 157).

## Hard Spots

The self-closing gate from the parking area is 48" wide, with an opening tension of 6 lbs. The trail is generally easy, but moderately difficult in some sections and can be very muddy or rutted. Between the first and second bridges, there is a 100' section of trail with a 7.7% grade and a 3.2% cross slope. This can be difficult, especially when wet.



Jack Sasson

## Trail Notes

The Dry Creek Trail runs through the grasslands east of Boulder, attracting many dog walkers. The trail starts south to a prairie dog colony for 300', then turns toward Dry Creek. Most of the creek is closed to limit the spread of the invasive New Zealand Mudsnaills. A little cover is provided by



## Activities & Facilities

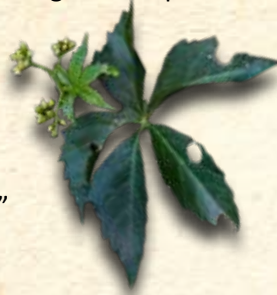


# 20 Bobolink Trailhead (South Boulder Creek Trail)

## Quick Facts

- Rating: easy-moderate
- Distance: 1.4 miles
- Surface: crusher fines
- Width: Avg: 7'6" Min: 3'6"
- Cross slope: Max: 8-12% for 30'
- Grade: Avg: 2% Max: 9% for 19'
- Shade: The first 0.5 mile section of trail is shaded. The rest is fairly open.

Virginia creeper



Kaitlyn Merriman



## Hard Spots

Near the end of this first section, the trail skirts the creek with a cross slope of

9.3%. The next section to S Boulder Rd. has a steep section as it goes over an irrigation culvert, reaching a grade of 8% for 34'. There is a concrete bridge after the culvert which has an approaching slope of 8.5% for 20' with loose crusher fines. Careful on corner before you reach the underpass. It has a cross slope of up to 12%.

## Getting There

The South Boulder Creek Trail starts at Bobolink Trailhead, located on the south side of Baseline Rd., 2 miles east of Foothills Pkwy. (Hwy. 157). Parking is also available at East Boulder Community Center 5660 Sioux Dr. between S Boulder Rd. and Baseline Rd. east of Hwy 157. Bathrooms are available at the Community Center. Some street parking is available at the Marshall Rd. trail end (870 Marshall Rd., Boulder, Colorado).

## Habitat

The South Boulder Creek Trail wanders through a lush riparian area with a large diversity of vegetation and wildlife, including the Preble's meadow jumping mouse and the rare bobolink blackbird.

## Culture and History

Look for the picturesque Doran Barn (1900) just south of S Boulder Rd. on the west side. The historic Abernathy Barn is located at the south end of trail across from the creek.



Michael Morton

*The bobolink, a ground-nesting bird of the prairie, gave its name to this trailhead. Protection of grassland habitats are vital to its survival.*

## Trail Notes

Small rolling hills are interspersed throughout the trail. The first hill has a grade of 5-7% (cross slope 2.5%) with others being 9% or less. There are plenty of places to pull off the trail and relax alongside the stream. After the first 0.5 mile you can take the concrete path west over a bridge to East Boulder Community Center or continue along 0.9 mile on the crusher fines to South Boulder Rd.

If you continue through the underpass and head west, the trail goes for another 2 miles. This S Boulder Rd. to Marshall Rd. section of trail is relatively flat and is often used for cattle grazing.



## Activities & Facilities



# 21 South Boulder Creek Trail (via Marshall Rd.)

## Quick Facts

- Rating: easy-moderate
- Distance: 1.8 miles
- Surface: crusher fines, road base gravel
- Width: Avg: 7'6" Min: 3'6"
- Cross slope: Max: 3%
- Grade: Avg: 1% Max: 10% for 5'
- Shade: not very much

Blue grama grass



Ann G. Duncan

The historic Doran barn, visible to the west of the trail near South Boulder Road, is photogenic in any season.

## Getting There

The Marshall access point for the South Boulder Creek Trail is located on Marshall Rd. (870 Marshall Rd., Boulder, Colorado). Follow Broadway south, past Greenbriar Blvd. about 0.5 mile. Make a left onto Marshall Rd., then a quick right. The S Boulder Creek access point is on your left. Street parking is the only available option.

## Trail Notes

The trail goes for 1.8 miles before it reaches S Boulder Rd. This Marshall Rd. to S Boulder Rd. section of trail is relatively flat, usually less than a 3% grade. It follows the South Boulder Creek but only comes within 50' of the water. It is an old ranch road that is popular among runners. There are 5 gates along the route, the narrowest 35" wide. The 3 gates in the middle are usually left open unless cattle are grazing.

## Hard Spots

This section of trail is rough in some places because of the road base dirt/gravel. The trail has a 7-10% grade at the Hwy 36 underpass.

## Habitat

The trail runs through moist tallgrass prairie and wetland habitats that are often grazed by cattle. The prairie dog colony near the Marshall Rd. access offers up-close viewing opportunities since the animals live right next to the trail and are habituated to people. Deer can sometimes be seen near the creek. Various birds including kingfishers, flickers, and meadowlarks can be spotted. Vegetation includes many grasses and wildflowers. Currently, on this section of trail, the S Boulder Creek has a closure to protect it against the New Zealand Mudsnail, an invasive species detrimental to the ecosystem's health.



Wendy Marie Stuart

## Culture and History

Remnants of the old Abernathy barn can be seen across S Boulder Creek as the trail nears the creek from the Marshall Trailhead. The historic Doran Barn (1900) remains are just south of S Boulder Rd. Ranching has been part of this area since homesteading in the mid 1800's. The area is still often used for cattle grazing.



## Activities & Facilities



# 22 Cherryvale

## Quick Facts

- Rating: easy  
Distance: 0.7 mile  
Surface: crusher fines, road base gravel  
Width: Avg: 4' Min: 1' for 3' (need to roll one wheel on grass)  
Cross slope: Max: 8% for 10'  
Grade: Avg: 0% Max: 7% for 400'  
Shade: none

*Lance-leaf  
chiming bells*



## Getting There

From Hwy 36, drive east on S Boulder Rd. for 2 miles, turn right on Cherryvale Rd., travel about 0.25 mile and turn right at 66 S Cherryvale Rd. The parking lot is about 0.1 mile down the road on the right side.



Kristin Boyer

## Trail Notes

From the parking lot, the crusher fines/road base trail goes in two directions. About 0.2 mile west, you'll reach the OSMP Ranger Headquarters. Heading northeast for 0.25 mile, you'll reach the S Boulder Rd. The trail is generally flat with a minimal cross slope.

## Hard Spots

The trail turns into road base gravel at S Boulder Rd., becoming rougher as you head west. The long slope to the S Boulder Creek Trail can get rutted. This, and the 7% grade for 400', can make this trail difficult.

## Habitat

The vegetation in the area is mostly grasses, including some hay pastures. This area is significant for ground-nesting birds, raptors, rodents and small mammals. Fish and invertebrates are abundant in the creek (state fishing regulations apply). The creek and wet meadows also provide habitat for unique plant life such as the threatened Ute ladies' tresses orchid (pictured).



Linda Mahoney

## Culture and History

The trail skirts around the Hogan's cattle ranch, OSMP land that was purchased from the Hogan family. The Hogan family now leases it from OSMP for ranching their 500 head of cattle. Their great grandfather homesteaded here in Boulder. Look for the historic stone farm buildings on the corner of S Boulder Rd. and Cherryvale Rd., including the huge white Viele farm house.



## Activities & Facilities



# 23 Marshall Mesa Trail

## Quick Facts

- Rating: difficult
- Distance: 0.25 mile
- Surface: crusher fines, gravel, dirt, clay
- Width: Avg: 4' Min: 3'
- Cross Slope: Max: 11.4% for 12'
- Grade: Avg: 5% Max: 13% for 10'
- Shade: a couple of trees at the end

Prairie dog skull



## Getting There

Just south of Boulder, Marshall Mesa Trailhead is located on the SE corner of Hwy. 93 & Marshall Rd.



Trails around Marshall Mesa offer a variety of opportunities for adaptive off-road hand cycling.

## Trail Notes

From the trailhead, you can get a pretty good idea of what's ahead of you on the trail. A 75' access path with a 5% average slope takes you to a 64" wide gate. The accessible crusher fines trail is immediately to the left. This goes for about 250'. The surface then turns to large dispersed pieces of rock and gravel on top of hard packed dirt. This rough and tough trail takes you over a couple bridges to a sandstone outcropping. This area is ideal for adventurous wheelchair types to play around and test their skills or just enjoy the view. Several juniper trees hunker here providing shade for weary hikers.

## Hard Spots

This difficult 0.25 mile trail is appropriate for wheelchair users who are looking for an extra challenge. Besides continuous obstacles over 2" high on the trail, there is a section with a grade of 9% for 80'. Historically a coal mining area, the trail lacks cover and shade. It can be extremely hot during a summer afternoon hike.

## Habitat

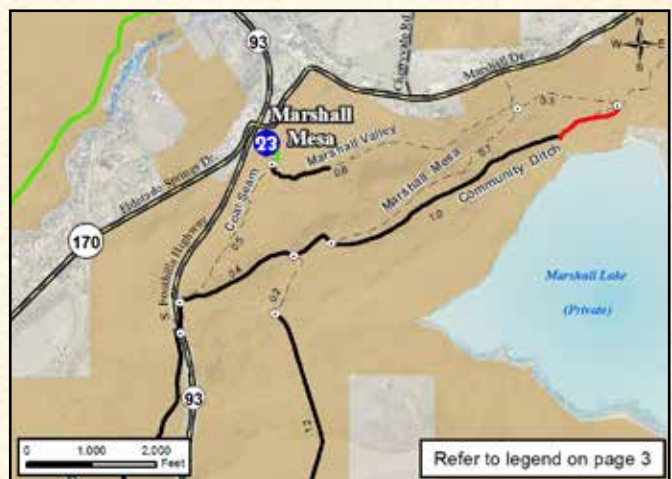
Birdwatchers can peruse the skies for a solitary red-tailed hawk floating the thermals. Coyotes and mule deer are common. Prairie dogs and grazing cattle share the landscape. Remnants of rare tallgrass prairie turn colors in the fall: tan, ochre, fawn, russet, and burgundy.



J.B. Sturtevant

## Culture and History

This was a coal mining area from the 1860's until the 1930's. Sink holes, old railroad grades, and earthworks dot the landscape. An interpretive sign at the trailhead provides historic information on the area. For a fascinating account of the coal mining at Marshall Mesa, download Joanna Sampson's brochure "Walking through History on Marshall Mesa": <https://bouldercolorado.gov/media/1599/download?inline>



## Activities & Facilities



# 24 Greenbelt Plateau

## Quick Facts

- Rating: moderate-difficult
- Distance: 1.2 miles
- Surface: gravel, road base
- Width: Avg: 7' Min: 22" due to overgrowth in middle of road
- Cross slope: Max: 10% for last 100' (washout)
- Grade: Avg: 4% Max: 9.5% for 20'
- Shade: very little

*Sand dropseed*



## Getting There

Just south of Boulder, the Greenbelt Plateau Trailhead is located on the NE corner of Hwy. 93 and Hwy. 128.

## Trail Notes

To access the trail from the parking lot, you must pass a 39" wide self-closing gate. The trail has some long flat sections, but also has some long descents and ascents (0.1 mile with 8% and 0.3 mile with 7%). At 0.75 mile, there is a second 35" wide gate. After traveling 1.2 miles, the trail ends at the Community Ditch connector trail. This trail is not accessible. There are great views of Eldorado Canyon and the Flatirons along the way.

## Hard Spots

This trail is moderate to difficult in a wheelchair mainly due to the trail surface. It consists of road base and dirt, thick with loose gravel. The trail's center is overgrown in areas so you have to follow a single tire track.



Andy Pelster

## Habitat

The trail runs along the border of the Southern Grasslands Habitat Conservation Area, a prairie preserve of outstanding biological significance in North America. Look for examples of rare tallgrass prairie grasses, wildflowers, and an occasional yucca. A few ponderosa pine trees are scattered haphazardly along the plateau. With luck, you may see a herd of elk, especially in winter! Many birds such as killdeers, meadowlarks, and vesper sparrows nest on the ground here during spring and summer.

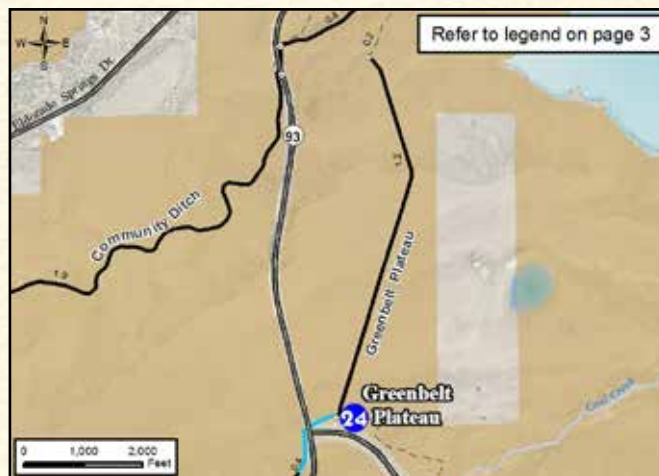
## Culture and History

This was a coal mining area in the 1860's.



Ann G. Duncan

*In spring, Greenbelt Plateau bursts into flower when the prairie blooms. Look for orange arnica (pictured), sand lilies, chiming bells, loco weed, and Easter daisies.*



## Activities & Facilities



# 25 Flatirons Vista

## Quick Facts

- Rating: easy
- Distance: 210'
- Surface: crusher fines, road base
- Width: Avg: 4' Min: 4'
- Cross slope: Max: 4%
- Grade: Avg: 5% Max: 9% for 12'
- Shade: very little



## Habitat

Coyotes, songbirds, birds of prey, mule deer, and bobcats are common year round. Bears can be sighted spring through fall. Bluebirds may gather here in the spring. Watch for golden and bald eagles overhead in the winter. Many birds, such as killdeers, meadowlarks, and vesper sparrows nest on the ground during spring and summer.

The dry (xeric) tallgrass prairie at Flatirons Vista is one of the most endangered vegetation types in the world. OSMP preserves some of the most significant tallgrass prairie remnants in Colorado. Big bluestem grass (right) can grow over 6 feet!



Dave Sutherland

## Getting There

South of Boulder on Hwy 93, the Flatirons Vista Trailhead is located just south of the intersection of Hwy 93 and Hwy 128. There are two disabled parking spots.



Malcolm Daly

*This area is great for adaptive off-road hand cycling.*

## Trail Notes

The Prairie Vista Trail is short and sweet. About 200' from the parking lot, the trail continues but becomes inaccessible to mobility devices. Many kinds of wildflowers brighten up the area. Taking the Greenbelt Connector Trail instead can give you a good opportunity to see wildflowers, birds, and wide-open landscapes. This trail ends at the intersection of Hwy 93 and Hwy 128, crossing the highway at a traffic light to Greenbelt Plateau.

## Hard Spots

To access the trail from the parking lot, you must negotiate a 63" wide gate. The Greenbelt Connector Trail starts out with about 230' of loose road gravel ranging from slopes of 8% to 10.5%, making it difficult for a wheelchair. Once you're on top of the hill, it's smooth sailing. Take the first crusher fines path to the right for an easy, beautiful hike that goes fairly close to the highway.

## Culture and History

Agriculturally, this is a current and historic grazing area. There is also a lot of evidence of Native American camps set up in this area.



## Activities & Facilities





# 26 Douady Draw

## Quick Facts

- Rating: moderate
- Distance: 0.4 mile
- Surface: granite crusher fines
- Width: Avg: 6' Min: 36"
- Cross slope: Max: 5%
- Grade: Avg: 5% Max: 8.6% for 20' at top (bridge)
- Shade: very little



Bronze copper

## Habitat

Wildflowers are seasonally abundant here, and there are great views of the foothills. Many of the songbirds that nest in the cottonwood trees and shrubs in summer spend their winters in the steamy tropical rainforests of Central America. Look for orioles, lazuli buntings (pictured), yellow-breasted chats, and spotted towhees.

## Culture and History

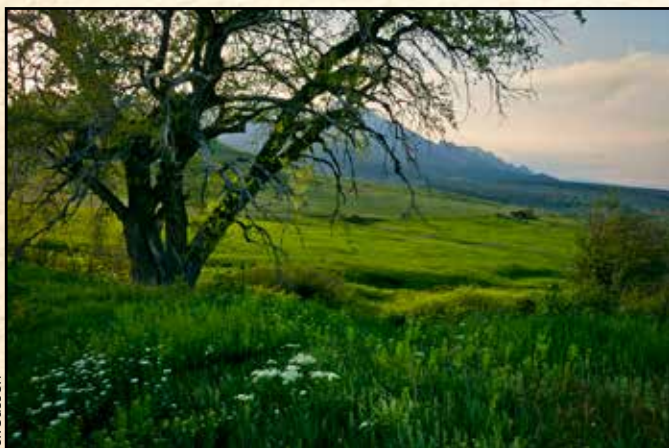
The picnic area site sits on a former homestead and dairy farm. Ruth Dunn grew up in the Dunn House, part of which still stands just west of the South Mesa Trailhead about half a mile from this picnic area. In 1928, Ruth married Henry Helart and lived at the site of a stone foundation at the northern end of the picnic area. This house was moved from the mining town of Marshall, about 3 miles away, after the coal strike in 1914. The Helarts ran a dairy farm with as many as 50 cows for several years. You can make out a concrete foundation and several fence posts from the corrals just south of the restrooms. The only building remaining is the milk storage shed near the creek, just north of the picnic area. Milk was kept cool with creek water circulating through the shed.



David Mendosa

## Getting There

From Boulder, follow Hwy 93 (Broadway) south and turn onto Eldorado Springs Dr. Go west for 2 miles. Douady Draw is on the south side of the road.



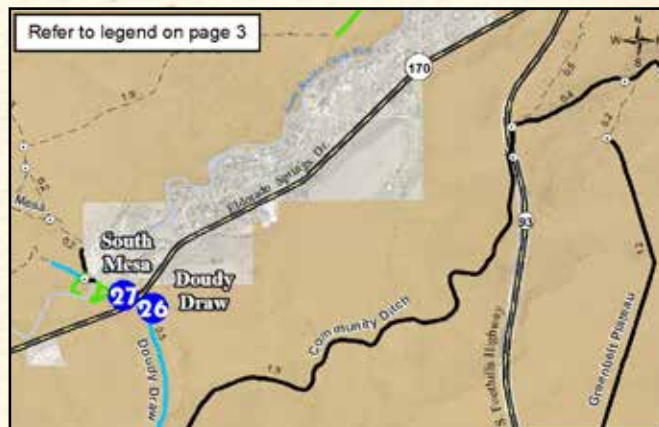
Jack Sasson

## Trail Notes

This crusher fines trail is slow going, but worth the 0.4-mile trek. Once you've reached the picnic area and restrooms up the 5-6% grade, the trail continues on for another 500' to the bridge. The trail is not considered accessible from this point on. Community Ditch Trail also intersects at this point.

## Hard Spots

The gate from the parking area is 63" wide. The picnic area is accessed through a 63" gate; the bathroom is accessed through a separate 65" gate. Because of the gusty winds in the area, the spring tension on the restroom doors is set very high, making it tough to negotiate with a wheelchair.



## Activities & Facilities



# 27 South Mesa Trailhead

## Quick Facts

- Rating: easy-difficult
- Distance: 2 miles
- Surface: crusher fines, road base
- Width: Avg: 9' Min: 3'
- Cross slope: Max: 2%
- Grade: Avg: 3% Max: 12% for 50'
- Shade: lots of shade at beginning, sparse after bridge



## Habitat

The easier portion of the trail starts out in a stream-side area along South Boulder Creek and opens up onto grasslands in the foothills of the Rockies. This lends itself to a diversity of plant life and animal species. Deer, black bears, and cougars spend time here. The area is rich with birds including peregrine falcons, red-tailed hawks, and songbirds. Anglers fish the creek for trout.

## Getting There



Ann G. Duncan

The trailhead is 1.7 miles west of Hwy 93 on Eldorado Springs Drive (Hwy 170). A parking lot with parking fee is on the north side of Eldorado Springs Drive. Parking is not allowed on Hwy 170.

*In fall, the beautiful reds of the sumacs accent the dramatic sky line.*

## Trail Notes

This is a great area for a picnic, with accessible tables dispersed throughout the trailhead area, some in shaded locations.

There is a flat, lower loop trail that veers off from the main trail near the trailhead. It is an easy trail with many wildflowers and lots of shade. Be careful of the poison ivy though! Above the creek is the historic Dunn House. There is an accessible path to the house a few yards past the stepped path.

## Hard Spots

After crossing the second bridge about 0.1 mile along the trail, the Mesa Trail has a gradual uphill grade as you head north with some long, steep grades of 10.8%, making it a difficult trail to hike in a wheelchair. Only the first 2 miles of it is somewhat negotiable in a wheelchair. The rest becomes too narrow, steep, and rocky.

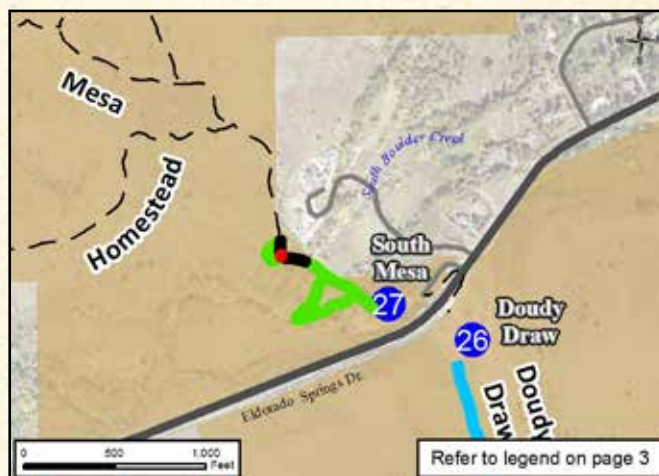
*Shady trails loop through the forest near South Boulder Creek.*



Topher Downham

## Culture and History

The trail crosses the Douly/DeBacker/Dunn homestead. The original homesteads, now no more than a shadow on the landscape, date back to early homesteading in the 1850's. The stone house standing above the stream belonged to John DeBacker, who sold the home and ranchland to his son-in-law, John Dunn for \$1 in 1901. In 1902, Dunn shot and killed a young neighbor near this site over what was most likely an argument about water rights, for which he served one year in jail.



## Activities & Facilities



## Quick Facts

*Prairie cordgrass*

- Rating: easy–most difficult
- Distance: 600'
- Surface: pea gravel
- Width: Avg: 8' Min: 5'
- Cross slope: Max: 6% for 5'
- Grade: Avg: 2% Max: 16% for 5'
- Shade: some at picnic tables and along trail



## Getting There

The South Boulder Creek West Trailhead is just south of Boulder. It is on the west side of S. Broadway/Hwy 93, 1 mile south of Greenbriar Ave. and the southernmost stoplight in Boulder.

## Site Notes

There are two accessible parking spots with fee parking for vehicles registered outside of Boulder County. Two shady picnic tables accommodate wheelchairs. An accessible bathroom with easy doors is about 200' from the parking lot. All dogs must be leashed in the Trailhead Leash Area. Dogs are allowed under Voice and Sight on some trails. Others require leash. Be sure to check the regulation board / kiosk at the trailhead.



Jamara Gorel

## Habitat

This is an excellent area to explore the grassland ecosystem. Deer commonly graze here in the early morning. The area also provides hunting grounds for many of our local raptors, foxes, and coyotes. In early May, large numbers of wild irises bloom along the upper Big Bluestem Trail.

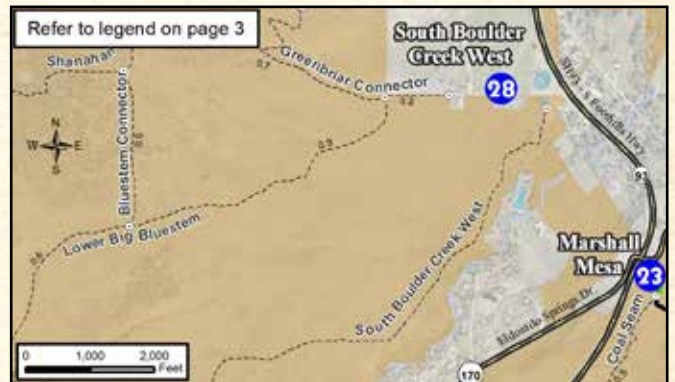


Dave Sutherland

The tallgrass prairie adjacent to the trailhead is so rare that it received special protection as a Colorado State Natural Area in 1994. The Ute ladies' tresses orchid and Preble's meadow jumping mouse (at left), both protected by the Endangered Species Act, occur here.

## Culture and History

Chased out of Minnesota by Indians around 1860, the Shanahans were headed to California. When the whole family got sick on the way up Bear Canyon, they wintered there. In the spring, Edward and Margaret Shanahan decided to stay in this area rather than continuing on to California. The family still ranches here today.



## Hard Spots

The first 25' are crusher fines at 4.5% grade. For 600', there is a mostly level but difficult pea gravel trail to the cottonwood grove and shade. The gate just beyond the bathroom has just 3' clearance that is challenging to navigate. This area is better for picnicking than hiking.

## Activities & Facilities



**Quick Facts**

- Rating: moderate-difficult
- Distance: 0.2 mile
- Surface: crusher fines, pavement
- Width: Avg: 7' Min: 3' 6"
- Cross slope: Max: 7.7%
- Grade: Avg: 8% Max: 15% for 5'
- Structures: National Center for Atmospheric Research, two benches
- Shade: plenty of trees



**Hard Spots**

This trail has a typical grade of 8 – 15% with a few flatter spots along the way. If you are using a wheelchair, you might want assistance on this trail because of the steepness and washed out areas. Also, a few of the forks on this trail are not accessible with lots of rocks in the way. The forks to the north are more groomed.

**Habitat**

Black bears and mountain lions inhabit this area. Coyote, fox, mule deer, and a variety of raptors may also be observed. This is also a great place to look at wildflowers, especially in the early spring.

**Culture and History**

The nature trail was named after Walter Orr Roberts (1915-1990), the founder of the National Center for Atmospheric Research (right). An astronomer and atmospheric physicist, he was one of the first scientists to warn that technology was changing the earth's climate.

*The Walter Orr Roberts Trail provides spectacular views of the rocky crags of Boulder's Front Range, including Seal Rock (pictured), the Flatirons, The Slab, and Bear Peak.*



Steve Mertz



Logan Garby

**Getting There**

Take Table Mesa Drive west 2.4 miles from Broadway until it ends at the National Center for Atmospheric Research in south Boulder.

**Trail Notes**

The interpretive Walter Orr Roberts weather trail is about 0.2 mile to the top. It's a great place to visit for spectacular 360 degree views nestled in pine trees, grass and wildflowers. From parking to the beginning of the trail is about a 300' sidewalk with a consistent 8% grade. At the end of the sidewalk, you can go left up another 200' incline with an 8% grade to use the restroom facilities inside NCAR or take a tour of the science displays. Otherwise, the red crusher fines route begins across the road. There are about a dozen 2.5' high interpretive signs highlighting weather-related information. Towards the end of the route there are two stone slab benches in shady areas with magnificent views.



**Activities & Facilities**



# 30 Buckingham Campground (4th of July Trailhead)

## Quick Facts

Rating:	moderate
Distance:	416'
Surface:	dirt, forest duff, and crusher fines
Width:	Avg: 4' Min: 3'
Cross slope:	Max: 4% for 5'
Grade:	Avg: 4% Max: 10% for 3'
Shade:	Plenty - this is a forested area

*Parry's primrose*



## Getting There

From Boulder, follow Canyon Blvd. (SR 119) west 18 miles through Nederland. Just south of Nederland, travel west on CR 130 through the town of Eldora (4.5 miles). Shortly beyond Eldora, the pavement becomes a fairly rough dirt road. After approximately 0.7 mile, the road forks; follow the right fork approximately four miles to Buckingham Campground.

## Trail Notes

4th of July Campground is the hidden alpine gem of OSMP. It is the only place on OSMP lands where camping is allowed and there is a camping spot for people with disabilities complete with a picnic table and a level crusher fines camp pad. There is access to the stream (North Fork of Middle Boulder Creek) on a trail through the woods. Camping is also possible along that path. Fishing the creek from a wheelchair is possible at the flat area at the end of a short creek access trail from the campsite.

An additional disabled parking spot and trail are located at the end of the road next to the access gate if you go straight and don't turn right toward the bathrooms. Access the creek trail through the 3' opening to the right of the gate. The trail/road is hard pack crusher fines and dirt. It starts with a 6.5% section for 25' and remains fairly flat until you reach a crusher fines path to the left at 217'. This 200' section gently descends to an 8' x 12' viewpoint on the bank of the creek. The steepest section is 10% for 3'. There is very little cross slope except for a short section at 4%. The viewpoint provides another fishing opportunity for anglers with disabilities.

## Hard Spots

The most challenging section is the 12% grade for 5' leaving the campsite. There is another hard section at 10% for 3' a little farther down the trail as you skirt between two trees. Bathrooms are accessible, but it would be prudent to park next to them since the road access up to them is steep and rocky.

## Habitat

This is a beautiful alpine area filled with streams, forests, and meadows. The location is ideal for wildflower viewing in the summer. In the fall months, the sounds of elk bugling slice the air and bright yellow leaves of aspens accent the already majestic mountain views.

## Culture and History

Some stories say 4th of July Trailhead got its name because the road is impassable until the 4th of July. It's actually named for the 4th of July Mine located on a scenic bench about two miles up the trail. Mr. and Mrs. Carl E. Buckingham (nephew of early Boulder bank president and philanthropist Charles G. Buckingham, who arrived in Boulder in 1874, see p. 16) donated 35 acres of land near Eldora for this campground in 1960. 4th of July Campground served as the "base camp" area for the annual Arapaho Glacier hike and breakfast sponsored by the Boulder Chamber of Commerce between 1938 and 1974.



## Activities & Facilities



# Accessible Trails - Other Local Agencies

Other land agencies and city programs provide accessible outdoor recreational opportunities in the Boulder area. Here is a sampling of locations to check out, and contact information.



Wax currant

## Eldorado Canyon State Park



Jack Sasson

**Fowler Trail** is a beautiful 0.4 mile easy trail that runs along one of the cliffs of Eldorado Canyon. It offers incredible views of Eldorado Canyon's cliff walls and many cliff-nesting birds that reside there.

**Streamside Trail**, as the name suggests, takes you close to the S Boulder Creek. It is only about 125' long but a very beautiful area.

### More Information:

[cpw.state.co.us/placestogo/parks/EldoradoCanyon/Pages/Trails.aspx](http://cpw.state.co.us/placestogo/parks/EldoradoCanyon/Pages/Trails.aspx)  
or call 303-494-3943.

For general information about accessible opportunities on Colorado Parks & Wildlife lands, visit:  
[cpw.state.co.us/aboutus/Pages/Accessibility.aspx](http://cpw.state.co.us/aboutus/Pages/Accessibility.aspx)

## Boulder County Parks & Open Space

Boulder County has several accessible trails, but many were affected by the flood of 2013.

**Walden Ponds** is off of 75th St. between Arapahoe and Jay Rd. It is the big brother that Sawhill Ponds aspires to be. It is a fabulous place with accessible hiking, bird watching, and fishing. Plenty of disabled parking spots are available. The Wally Toevs Pond is a special fishing pond for elderly people and people with disabilities. Cottonwood Marsh has a great accessible wooden boardwalk that brings you out over the marsh.

**Pella Crossing** on 75th St. near the town of Hygiene is an amazing accessible trail around several lakes. It has accessible bathrooms and picnic areas. It is great for birdwatching and enjoying sunsets!

**Lagerman Reservoir** (see photo below), on 75th St. near Niwot is a nice lake with accessible areas. It has accessible bathrooms, a picnic shelter overlooking the lake, and 2 disabled parking spots.



Emily Olivo

**Hall Ranch** near Lyons is another beautiful site. Disabled parking is in the upper lot. The bathrooms are accessible, but there is a 3" lip to get into them. The trails are not very accessible, but there are some great views to be enjoyed at the picnic shelter.

**Niwot Loop** is a long loop trail in Niwot. It is about 3.7 miles long that goes on road, bike path, and trail. One disabled parking spot is at the main lot on 79th St. near Hwy 52.

**Twin Lakes** is located on Twin Lakes Rd. in Gunbarrel. It is another good flat wetland trail that is good for hiking, fishing, and walking dogs. The trail loops around two lakes, thus the name. The best accessible access is off Nautilus Dr.

**Carolyn Holmberg Preserve at Rock Creek Farm** is an oasis of calm in the midst of urban life. Tucked between Broomfield and Lafayette at Dillon Rd. and 104th St., the wheelchair-accessible trails allow you to come here to fish, walk your dog, or enjoy a beautiful mountain view.

### More Information:

[BoulderCountyOpenSpace.org](http://BoulderCountyOpenSpace.org) or call 303-678-6200.

## City of Longmont

**Golden Ponds Park and Nature Area** has flat, accessible trails and an accessible fishing pier. Some of the trails are concrete while others are crusher fines. Accessible bathrooms, parking spots, and picnicking are available.

**Fairgrounds Lake and Roger's Grove Arboretum and Outdoor Learning Center** is a nice area. Fairgrounds Lake has an accessible concrete and crusher fines trail around it. Sidewalks meander through the arboretum. Accessible parking is available at Fairgrounds Lake and Roger's Grove. Bathrooms are located at Roger's Grove.



Emily Olivo

### More Information:

[longmontcolorado.gov/departments/departments-n-z/parks-open-space-trails/directory-of-parks-trails](http://longmontcolorado.gov/departments/departments-n-z/parks-open-space-trails/directory-of-parks-trails)  
or call 303-651-8446.

## Rocky Mountain National Park

**Sprague Lake and Bear Lake** (pictured) have beautiful accessible trails around them. Sprague Lake also has an accessible campsite about 0.5 mile down the trail.



Jack Sasson

**Lily Lake** is located just south of Estes Park along the Peak to Peak Highway, is also a great place to go for a mile long loop hike.

**Coyote Valley Trail** on the park's west side, offers a mile-long level grade that parallels the head waters of the Colorado River in the Kawuneeche Valley.

**Beaver Boardwalk Trail and Holzwarth Historic Site** are other accessible trails in RMNP worth checking out.

### More Information:

[nps.gov/romo/planyourvisit/accessible\\_trails.htm](http://nps.gov/romo/planyourvisit/accessible_trails.htm)  
or the Disability Traveler's Companion website at:  
[tdtcompanion.com/NPS/Rocky/](http://tdtcompanion.com/NPS/Rocky/)

## City of Louisville

**Warembourg Open Space** has a relatively flat 8-10' wide crusher fines trail which leads to a small pond. Two parking areas exist. Park to the east (ADA parking only) and travel 0.2 mile to a small fishing pond. Other accessible trails exist within the City of Louisville.

### More Information:

<https://www.louisvilleco.gov/exploring-louisville/about-us/trails-and-maps>  
or call 303-335-4735.

## SportsAbilities

SportsAbilities is the premier resource for people with physical disabilities to find recreational, advocacy, support, and adaptive sporting activities nationwide.

### More Information or to sign up for their newsletter:

[sportsabilities.com](http://sportsabilities.com) or call 303-435-6116.

## City of Boulder's EXPAND

This municipal program has great activities for people with disabilities. City of Boulder Parks and Recreation runs the Exciting Programs Adventures and New Dimensions (EXPAND) program. EXPAND helps people who have disabilities improve and gain new recreation and leisure skills that will enhance participants' overall well being and their quality of life.

### More Information

[bouldercolorado.gov/services/expand](http://bouldercolorado.gov/services/expand) or 303-413-7200



Troy Petersen



Mary Balzer



OSMP Image



Topher Downham



Dave Sutherland



Steve Mertz



Mary Balzer



Robin Bolduc



Mary Balzer