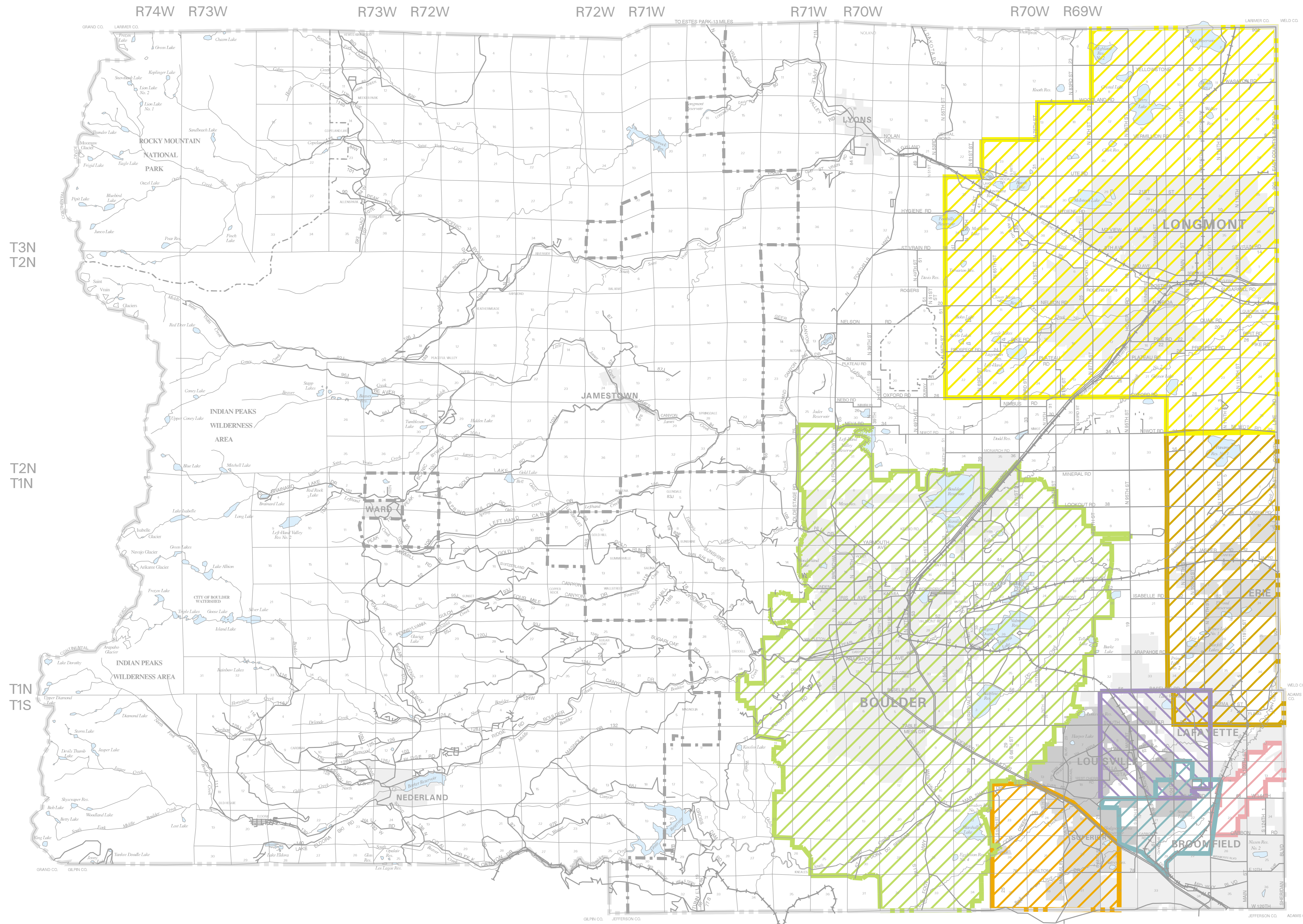


Comprehensive Development Plan Intergovernmental Agreements Between Boulder County and Municipalities

Legend

-  Boulder Valley Comprehensive Plan
-  Longmont Area Intergovernmental Agreement
-  Lafayette/Louisville Buffer
-  Superior Area Comprehensive Development Plan
-  Southeast Boulder County Intergovernmental Agreement
-  East Central Boulder County Comprehensive Development Plan
-  Northwest Parkway*
-  Incorporated Areas (As of April 20, 1999)



Notes

Map scale and reproduction method limit precision in physical features and boundary locations.
PRINTED - APRIL 22, 1999

*Described in the "Southeast Boulder County, South 96th Street, Dillon Road and U.S. 287 Comprehensive Development Plan"

Not Adopted by any County Boards

0 1 2 3 4 5
MILES



**COMPREHENSIVE
PLAN MAP**



Intergovernmental Agreements Between Boulder County and Municipalities