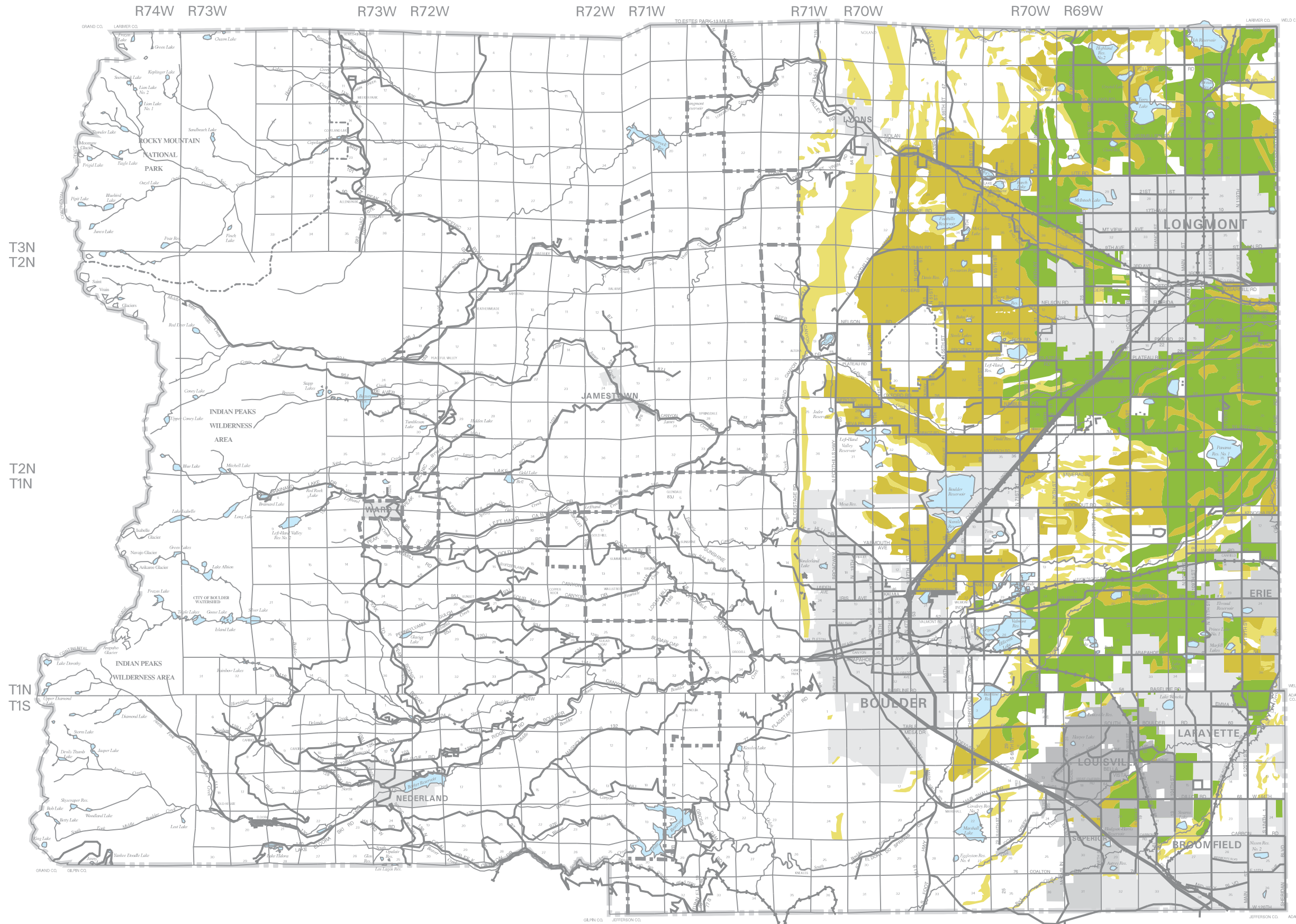


**Significant Agricultural Lands**  
Environmental Resources



**Legend**

- Lands of National Importance
- Lands of Statewide Importance
- Lands of Local Importance
- Incorporated Areas  
(As of June 9, 1998)

**Notes**

Map scale and reproduction method limit precision in physical features and boundary locations.  
PRINTED - JULY 1, 1998

Adopted - Planning Commission - July 16, 1997  
Approved - County Commissioners - August 14, 1997



**COMPREHENSIVE  
PLAN MAP**

