



Legend

Pavement Quality Index

- POOR
- FAIR
- GOOD

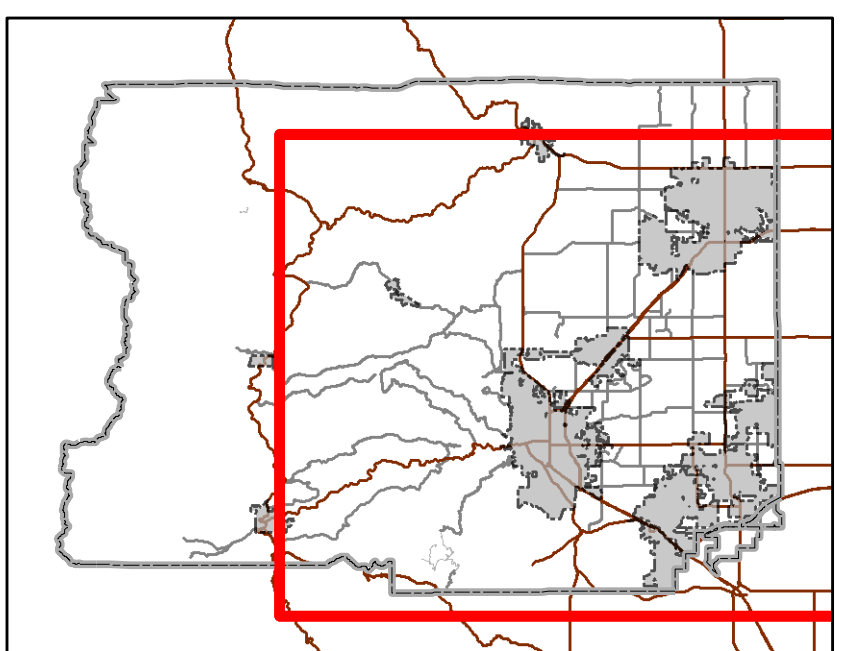
- AADT Count Stations
- Places of Worship
- Golf Courses
- Schools

- Priority 1 Snow Removal
- Priority 2 Snow Removal
- Priority 3 Snow Removal, Residential Collector
- Roadway Providing Access to Regional Destination

- Handout Extents
- Subdivisions
- County Boundary
- Municipalities



Area of Detail Date: 5/15/2014



This map is for illustrative purposes only and the features depicted on it are approximate. More site specific studies may be required to draw accurate conclusions. Boulder County makes no warranties regarding the accuracy, completeness, reliability or suitability of this map. Boulder County disclaims any liability associated with the use or misuse of this map. In accessing and/or relying on this map, the user fully assumes any and all risk associated with the information contained therein.

Name	Pav. Class	Length (mi)	2012 Pavement Quality Index	Subdivision	Group	Area
30TH ST	NC	3	1.255	0.28	4.0-6.9	Residential Collector, Priority 2 Snow Removal
ANNAVA AVE	NC	3	2.235	0.42	6.9	Roadway Providing Access to Regional Destination
ANNAVA ST	S	3	2.365	0.45	6.2	ANNAVA MANOR
AULINGTON DR	L	2	2.675	0.51	2.6	PAUL NOK ESTATES
BARFIELD DR	L	2	2.415	0.46	6.0	HEATHERWOOD
BARCELONA DR	L	2	2.445	0.46	3.5	SPANISH HILLS
BILLINGS AVE	L	2	4.955	0.94	4.1-4.7	BROWNVILLE
BOULDER HILLS DR	L	2	3.755	0.70	4.0-4.3	BOULDER HILLS
BROOK DR	L	2	2.945	0.54	4.4	BOULDER HEIGHTS
CAMP EDEN RD	L	2	6.435	1.22	8.0-8.1	KUNSMANN HEIGHTS
CARTER TRL	NC	2	4.915	0.98	3.7-6.4	GUNBARREL GREEN
CLUBHOUSE DR	NC	2	2.795	0.51	5.0	FOURTEEN GREENS / GUNBARREL GREEN / HUNTERLOCK
COLUMBIA PL	L	2	3.295	0.45	4.1	PAUL NOK ESTATES
COPPERDALE LN	L	2	4.305	1.19	3.5-5.2	COPPERDALE LANE
DEER TRAIL DR	L	1	7.555	1.48	4.2-5.1	BOULDER HEIGHTS
FAIRWAYS DR	L	3	4.065	0.77	4.4	LAKE VALLEY ESTATES / FAIRWAYS
FLATIRON DR	L	2	6.585	1.25	4.2-5.8	Residential Collector, Priority 2 Snow Removal
FRANKS DR	SS	2	869	0.16	5.5	BROWNVILLE
GOFF CLUB DR	NC	2	6.375	1.21	2.6-3.7	Residential Collector, Priority 2 Snow Removal
HARVEST RD	L	3	1.975	0.37	6.7	GUNBARREL GREEN
HEATHERWOOD DR	NC	1	7.035	1.33	4.1-6.6	HEATHERWOOD
HILL CREST DR	L	3	2.005	0.38	4.0	WILDS HEIGHTS
DYLAND TRL	NC	2	4.655	0.88	4.3-4.5	GUNBARREL GREEN
KALUA DR	NC	2	1.835	0.34	6.8	TWIN LAKES
KENDEN DR	NC	2	12.670	2.40	3.1-4.7	PINE BROOK HILLS / SPRING VALLEY ESTATES
LONGSHORN DR	L	2	1.235	0.23	6.6	BROWNVILLE
LONGVIEW DR	NC	2	7.925	1.50	4.5-6.3	Residential Collector, Priority 2 Snow Removal
MARATHON RD	NC	2	1.755	0.33	7.0	WILDS HEIGHTS
MEADOW LAKE RD	NC	3	2.185	0.41	6.6	MORTON HEIGHTS
MORTON DR	NC	3	2.755	0.52	5.4	PAUL PARK
N 30TH ST	NC	2	1.960	0.37	3.8	SPRING LAKE HEIGHTS
N 45TH ST	SS	2	1.110	0.76	2.5-5.7	LAKE VALLEY ESTATES / NORTH HAVEN
OLD MILL TRL	SS	3	2.075	0.36	6.7	GUNBARREL GREEN
PALM PKWY	NC	3	1.034	0.19	7.2	PALM PARK
PARK RIDGE AVE	L	3	1.265	0.31	4.5	WILDS HEIGHTS
PEBBLE BEACH DR	NC	2	3.455	0.61	1.1-3.3	NORTH HAVEN
PLATEAU DR	NC	2	2.995	0.51	2.9	BOULDER HILLS
RESERVE DR	NC	3	2.372	0.45	5.8	SOMMERBRO BANCH
SALISBURY CT	NC	2	440	0.08	5.4	STONEHENGE
SOMERSET DR	NC	2	3.125	0.59	3.9-6.2	SOMERSET ESTATES
STONEHENGE CIR	SS	2	666	0.13	5.8	STONEHENGE
STONEHENGE DR	NC	2	1.661	0.31	4.9	STONEHENGE
STONEHENGE DR	NC	2	2.038	0.39	4.9	STONEHENGE
STONEY DR	NC	2	932	0.14	3.5	BROWNVILLE
SUNSET PL	SS	3	778	0.15	4.0	STONEHENGE
TWIN LAKES DR	NC	2	5.605	1.06	4.2-6.4	RED FOX HILLS / TWIN LAKES
WALKER AVE	NC	2	1.025	0.26	5.6	MORTON HEIGHTS
WESTVIEW DR	NC	2	4.827	0.91	3.7-4.6	Residential Collector, Priority 2 Snow Removal

Snow Removal Priority
Due to specialized equipment, logistics, timing, available funding and manpower required to provide efficient and effective snow removal for county maintained roads, each road is assigned a priority. These designations are adopted by resolution of the board of county commissioners to maximize the effectiveness of county snow removal operations.

Priority 1 - These roads are on a primary snow removal route, indicates that the road will be plowed to maintain continuous all-weather access within the maximum capabilities of the county.

Priority 2 - These roads are on a secondary snow removal route, indicates that the road will be plowed to provide reasonable all-weather access as time, available funds and manpower permit. Priority 2 roads consist of those with school bus routes in subdivisions.

Roadway Classifications
A hierarchy of functional classifications categorizes transportation corridors based on their role in connecting and providing access between "origin" and "destination" land uses. Higher functional classifications are devoted primarily to moving larger numbers of people longer distances, while the lower classifications primarily provide access to and serve adjacent land uses. These different purposes are categorized as follows:
- Regional Travel: The ability to move over large distances to connect regions.
- Local Circulation: The ability to move within areas and to connect land uses.
- Local Access: The ability to enter and make use of specific land uses and sites.

Residential Collector (RC)
Provides for internal movement within a residential area connecting local access to collector roads and/or minor arterials, and provides some access to adjacent land uses. A residential collector is a two-lane facility. Determined by Board of County Commissioners resolution.

Local (L)
Provides access to specific land uses, particularly residential. Roads of these classifications are two-lane facilities, although in isolated cases, one-lane roads may exist (towards forest access, etc.). Determined by Board of County Commissioners resolution.

Roadway Providing Access to Regional Destination
A roadway classification created to address maintenance level 3 local roadways providing access to regional destinations such as places of worship, schools, and golf courses. This classification was created solely for the purpose of discussing LID funding priority.

