



Boulder County Parks and Open Space

5-Year Visitor Study – 2010



Prepared by: Michelle Bowie
Education and Outreach Specialist

Table of Contents

Acknowledgements.....	2
Executive Summary	2
Introduction.....	3
Methods.....	3
Results.....	5
Property Analysis.....	22
Appendix A: Survey	43
Appendix B: Top 5 “One Improvement” Comments	46
Appendix C: Other Uses of Open Space.....	51
Appendix D: Conflicts	53
Appendix E: Top 5 “Design of Trailhead” Comments.....	55
Appendix F: Top 5 “Maintenance of Trailhead” Comments.....	59
Appendix G: Top 5 “Sign Usefulness” Comments.....	63
Appendix H: “Anything Else” Positive Comments	67
Appendix I: “Anything Else” Suggestive Comments.....	74
Appendix J: Property Specific Sampling.....	80



Acknowledgements

Boulder County Parks and Open Space would like to thank the Boulder County's Senior Tax Work-Off Program participants, volunteer park patrollers and staff members whose many hours of survey collection and data entry made this study a success.

Additionally, the department would like to thank the 2,388 visitors to Boulder County Parks and Open Space trails who took time to complete the survey.

Executive Summary

Every five years, Boulder County Parks and Open Space (BCPOS) conducts a system-wide demographics and satisfaction survey. These "Five-Year Studies" (5YS) complement the regular annual studies and look at long-term trends in visitor demographics, preferences, attitudes, and behaviors.

During the spring and summer of 2010, BCPOS staff and volunteers collected 2,388 surveys (response rate 70%) at 19 Boulder County Parks and Open Space properties including 16 parks and three neighborhood trails. Like the 2005 5YS, we received a better response rate at parks (75%) than at neighborhood trails (51%).

The average BCPOS visitor:

- has lived in Boulder County for 10 or more years,
- is between 40 and 60 years old,
- is slightly less likely to own a dog than not,
- lives in Boulder or Longmont,
- has a Bachelor's, Master's, or PhD degree,
- earned between \$50,000 and \$199,999 last year, and
- self-identifies as White/Caucasian.

When a visitor goes out to a BCPOS park or trail, they generally do not seek information prior to their visit. Those visitors that do seek information prior to their visit are usually visiting the park for the first time and most likely obtained information from the BCPOS website. Visitors tend to travel by car, either with family or alone, and they probably did not bring a dog. If it is not their first time visiting the park, they generally visit once per month.

On a scale of 1 (poor) to 10 (excellent), the average visitor rated BCPOS land between 8 and 10. The visitor is most likely hiking or biking and feels that there are about the right number of trails. The average visitor considers the following as acceptable uses of open space:

- providing trails and recreation,
- preserving views,
- protecting wildlife habitat,
- conservation of natural ecosystems, and
- creation of urban buffers

It is unlikely that a visitor experienced interpersonal conflict during any given visit, and is only slightly more likely to have experienced conflict in the past year. Regardless whether the visitor experienced conflict or not, most of the park visitors did not feel crowded at all during their visit.

Most park visitors are happy with the amount of amenities and satisfied with trailhead design and maintenance. Visitors generally found the signs at the trailhead to be useful. These trends and others are presented in the following study.

Introduction

Purpose

The purpose of this study was to gather and compare specific information about park visitor patterns, opinions, preferences, and demographics over time.

Background

Every year, BCPOS conducts ongoing observation studies to determine the estimated number of visits to major parks, the activities in which visitors participate, and where and when they visit parks and trails. However, there are no records of visitors' demographic information or opinions in these annual studies. To gather more specific information about park visitors, BCPOS has conducted a complementary study every five years since 1990.

Methods



Survey Design

The questionnaire was designed for each respondent to fill out individually. Survey questions were modeled to remain consistent with past 5Ys, to investigate current issues in BCPOS, and to accommodate staff requests for specific data.

Data Collection and Sampling

Historically, the study has been conducted between Memorial Day and Labor Day. In 2010, we collected 2,388 surveys between May 29th and September 19th. Surveys were conducted by 15 Senior Property Tax Work-Off participants, 14 staff, and 5 park patroller volunteers. Each surveyor attended a formal training session and wore a BCPOS hat and/or nametag for identification.

These were exit surveys. Visitors were contacted at predetermined locations at a property trailhead, parking lot, or inside an area without a primary access point. Though some parks and neighborhood trails have many access points, sampling all of these would have been impractical for little added benefit. However, parks with multiple designated trailheads were surveyed at each trailhead (e.g. Heil

Valley Ranch). To collect a random sample, every third visitor was asked to participate in the survey on busy days, whereas an attempt to survey all visitors was made on slower days.

Survey sessions were two hours long, conducted in the morning (8:00am to 11:59am), afternoon (12:00pm to 3:59pm), and evening (4:00pm to 7:59pm). At every park, survey collection was attempted during all three time-periods and on both weekdays and weekends. Since weekend (Saturday, Sunday, and holidays) visitation on BCPOS properties exceeds weekday (Monday to Friday) visitation, the sampling was weighted toward weekends to more accurately represent actual visitation. If a survey shift was canceled, it was re-scheduled for the same time on the next available day.

Accurate representation of the parks’ different visitation patterns required that we collected larger samples at high-visitation parks (125 attempted surveys), moderate samples at medium-visitation parks (100 attempted surveys) and smaller samples at low-visitation parks (75 attempted surveys). Table 1 shows the sample sizes at each of the parks surveyed.

Table 1. Sample Size by Park

Park Name	Sample Size
Anne U. White Trail	114
Bald Mountain Scenic Area	60
Betasso Preserve	182
Boulder Canyon Trail	158
Carolyn Holmberg Preserve	90
Coal Creek Trail	139
Caribou Ranch Open Space	123
Fairgrounds Lake	76
Hall Ranch	153
Heil Valley Ranch	167
Lagerman Reservoir	98
Legion Park	64
Mud Lake	115
Niwot Monarch Loop Trail	73
Pella Crossing	144
Rabbit Mountain	142
Twin Lakes	147
Walden Ponds Wildlife Habitat	110
Walker Ranch: Loop Trail	142
Walker Ranch: Meyers Homestead	91
Total	2,388
Margin of Error	+/- 2%

The total sample size gave us a confidence interval of 95%, for which we calculated a 2% margin of error. That is to say, 95% of the time these results are accurate plus or minus 2%.

Results

Survey staff collected 2,388 completed surveys out of 3,422 attempted surveys. The overall response rate was 70%. A total of 646 hours were spent across 323 survey sessions in the parks. As such, staff collected about 3.7 surveys per hour.

Table 2. Survey Response Rates

	2010	2005	2000	1995
Surveys Completed*	2,388	1,812	641**	647
Total Response Rate	70%	58%	88%	88%
Parks	75%	72%	--	--
Neighborhood Trails	51%	46%	--	--

Table 2 illustrates that response rates continue to be higher at parks than at neighborhood trails. In 1995 and 2000, small groups of individuals were interviewed as one response. Therefore, when response rates were calculated in 1995 and 2010, individuals from those groups were counted toward the overall response rate, artificially raising the response percentage. This may explain why response rates were higher in 1995 and 2000, than in 2005 and 2010.

Primary Activity

Question 1: Which one activity do you consider your primary activity today at this park?

In 2000, respondents were asked to report all activities in which they participated. However, in 2005 and 2010, respondents were asked only to report their primary activity. The reason was to understand more accurately what the majority of visitors are doing at any given property.

In 2010, the responses for the “other” category included birding, canoeing, rock climbing, kayaking, eating lunch, and relaxing. Figure 1 shows that activities reported are similar to 2005 results. However, in 2010 the previous “Relax/Do nothing” category was deleted and “Walk the dog” was added. This may explain the decrease in “hiking” responses.

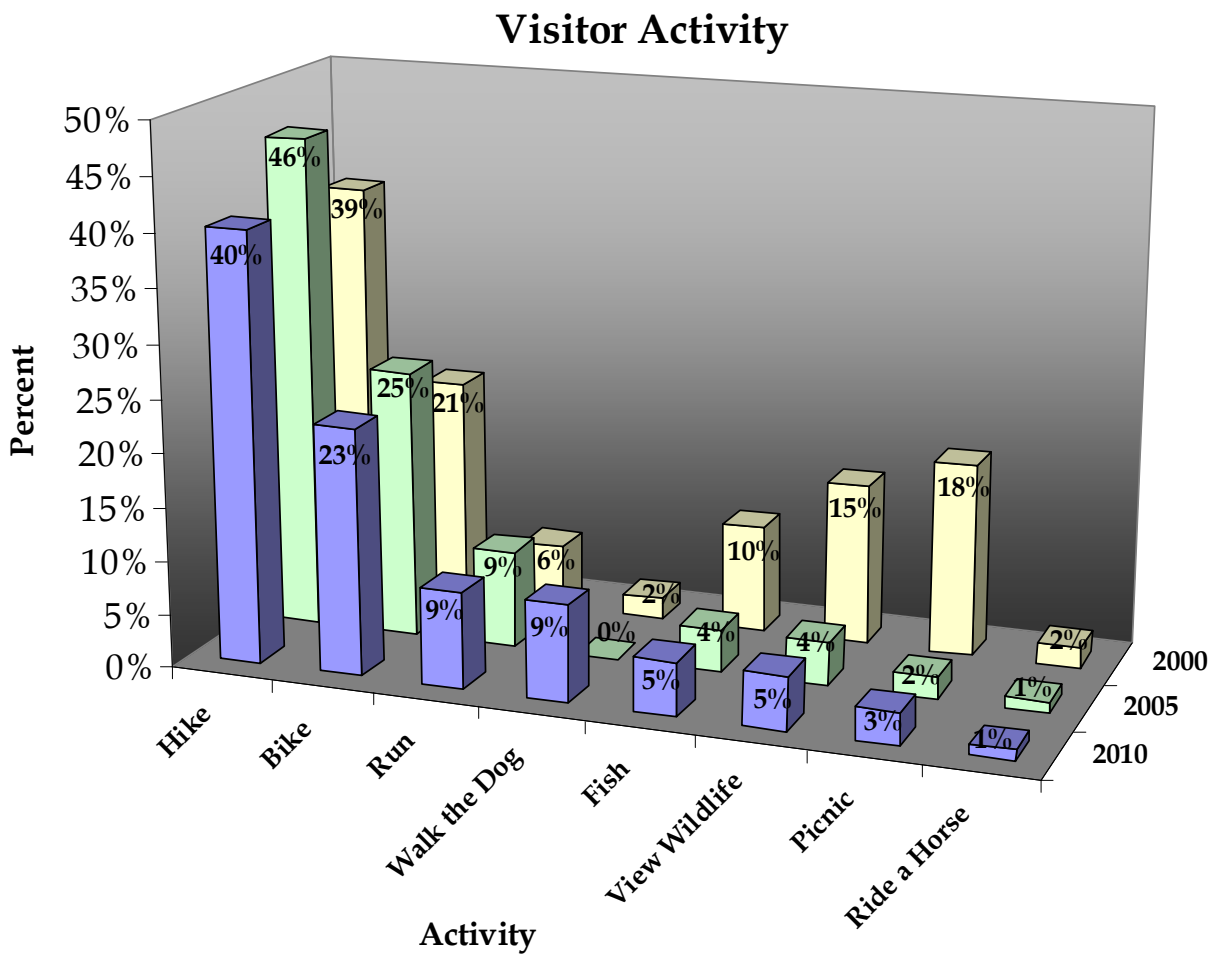
Furthermore, multiple-use trail miles added from 1995 to 2005 nearly exceeded those built from 1975 to 1995, with little increase in picnic or fishing facilities. As such, the proportion of other user types has grown larger as recreation opportunities have increased.



*In 2005 and 2010, individuals completed questionnaires, not interviews as in 1995 and 2000

** Multiple visitors in small groups were interviewed as one; total number of individuals here was 1,414

Figure 1. Primary Visitor Activity



Mode of Transportation

Question 2: How did you get to this park today?

Table 3. Mode of Transportation to Park

	2010	2005
Car	80%	78%
Bike	9%	7%
Hike	4%	9%
Other	3%	<2%
Run	3%	4%
Horseback	1%	<1%

The “other” responses recorded for primary transportation included taking the bus, driving a motorcycle, and walking. The large number of respondents who recorded “walking” may partially account for the lower percentage of respondents in 2010 who “hiked” to the park.

Additionally, the mode of transportation to a park was a strong indicator of the primary activity of the visitor. For example, 84% of visitors who indicated that their mode of transportation was biking also indicated that their primary activity was biking.

The second part of this question asked respondents who drove a car to state how many people, including them, rode in the car. The results showed, on average, two people occupied each car driving to BCPOS properties in 2010.

Social Group

Question 3: Which of the following best describes who you traveled here with today?

Table 4. Respondents Social Group

	2010	2005	2000	1995
Family	38%	34%	47%	49%
Alone	37%	38%	22%	17%
Friends	22%	25%	30%	33%
Organized Group	2%	2%	1%	1%
Blank	1%	<1%	--	--
Other	--	<1%	--	--

After declining since 1995, these results show an increase in the proportion of people visiting with family members. Consistent with 2005, a large proportion of visitors continue to visit our properties alone.

Respondent Age

Question 4: Please write the number of people in your group today that fall into the following age categories:

Table 5. Respondent Age

	2010	2005	2000	1995
40-60	38%	47%	--	--
25-39	25%	34%	--	--
Under 18	16%	1%	2%	2%
Over 60	15%	8%	--	--
18-24	6%	7%	9%	10%

In order to more accurately represent the age of all visitors to BCPOS properties, the question asks the respondent to not only provide their age, but also to record the number of people in their group which fall into the various age groups. This resulted in a more accurate representation of the age of visitors to BCPOS who are legally too young to complete surveys (under 16 years old). This increased the percent of visitors recorded as Under 18 from 1 percent to 16 percent.

However, due to these changes, the results from previous studies are not directly comparable to this year’s results. Additionally, we were unable to draw conclusions about different age groups recreational preferences without knowing the age of the respondent.



Frequency of Visits

Question 5: In the past year, about how often have you visited this park?

Table 6. Frequency of Visits

	2010	2005	2000*	1995*
First Time	24%	23%	23%	43%
Once per Month	20%	19%	7%	5%
More than Once a Week	17%	23%	25%	15%
Once or Twice in a Year	17%	15%	18%	8%
Once per Week	15%	14%	18%	20%
About Once per Season	6%	5%	--	--
Blank	1%	<1%	--	--

Park Rating

Question 6: How would you rate this park overall on a scale of 1 to 10, with 1 being poor and 10 being excellent?

Table 7. Overall Park Ratings

	Year			
	2010	2005	2000	1995
Average Overall Rating	8.7	8.4	8.3	8.0

Table 7 illustrates that the system-wide, average overall satisfaction rating (on a scale of 1 to 10) for visitors to BCPOS has increased since 1995. Individual park ratings can be found in the Property Analysis (p. 22-42).

* In 2000 and 1995, the question was posed for visit frequency in the “past 6 months,” and the list of responses was worded differently.



Visitors were then asked why they rated the park the way they did. Table 8 shows the top five reasons cited for park ratings.

Table 8. Top Five Reasons Cited for Park Rating (All BCPOS properties)

2010	2005
Aesthetic Beauty/Scenery/Views	Natural Beauty – e.g. “gorgeous”
Well Maintained/Clean	Good/great/excellent trail
Good/great Hike/trail/park	Scenic Views
Secluded/Peaceful/Quiet	Good trail maintenance
Wildlife Viewing/Birding	Personal affinity e.g. “I like it”

See the Property Analysis (p. 22-42) for a list of the top three cited reasons for each property’s numeric rating.

Suggested Improvements

Question 7: What one improvement would make your visit to this park more enjoyable?

Table 9. Percentage of Comments Offered

	2010	2005
Comments	56%	55%
Blank	27%	32%
“None/NA/Good job”	17%	13%

Since this question was regarding specific properties and trails, the results are not closely comparable. See Appendix B (p. 47) for a complete list of the top five suggested improvements for each property surveyed.

Acceptable Uses of Open Space

Question 8: Which of the following do you consider acceptable uses of open space?

Table 10. Uses of Open Space

	Acceptable	Unacceptable
Trails/Recreation	94%	6%
Preserve Views	92%	8%
Wildlife Habitat	86%	14%
Conserve Native Ecosystems	81%	19%
Urban Buffers	62%	38%
Renewable Energy	36%	64%
Agriculture	31%	69%

This was the first year this question was asked. The only two categories not considered acceptable uses of open space were renewable energy and agriculture.

However, the responses of this question varied largely by residency and property. In reference to residential variations, Boulder had the highest percentage of support for renewable energy as an acceptable use of open space (40%). Additionally, Unincorporated Boulder County represented the highest percentage of support for agriculture as an acceptable use of open space (43%). To examine variations by property, this question is further explored in the Property Analysis (p. 22-42).

Dog Ownership



Question 9a: Do you currently own a dog or dogs?

Table 11. Respondents that Own Dog(s)

	2010	2005
Do not own dog(s)	53%	55%
Own dog(s)	47%	43%
Blank	--	2%

Question 9b: Do you have a dog or dogs with you today?

Table 12. Respondents with Dog(s) at the Park

	2010	2005
Brought dog(s)	20%	20%
Did not bring dog(s)	80%	80%

The percentages for this question only represent the properties that allow dogs. Therefore, it does not include visitor responses from Caribou Ranch, Hall Ranch, and Heil Valley Ranch.

Number of Trail Miles

Question 10: Thinking only of this park, how would you describe the number of trail miles here, on a scale of 1 to 5, with 1 being not enough and 5 being too many?

Table 13. Opinion on Number of Trail Miles

	2010
1 – Not enough trails	12%
2	17%
3 – About the right number of trails	60%
4	2%
5 – Too many trails	1%
Not Sure	--
Blank	8%

Sixty percent of visitors indicated that they think there are about the right number of trails. Of the 29% of respondents that indicated that there are not enough trails, 37% were bikers and 37% were hikers.

Betasso Preserve visitors (48%) had the highest percentage of respondents indicate that there are not enough trails. Walden Ponds (91%), Fairgrounds Lake (86%), and Pella Crossing (84%) were the three properties that had the highest percentage of respondents indicate that there are about the right number of trails.

Of the properties with over five miles of trail, 58% indicated that there are enough trail miles and 42% indicated that there are not enough trail miles. Whereas, for properties with less than five miles of trail, 71% indicated that there are enough trail miles and 29% indicated that there are not enough trail miles.



Interpersonal Conflicts

Question 11: Sometimes visitors interfere with one another's goals on the trail, causing unpleasant experiences. This is generally referred to as "conflict." Did you experience conflict at this park TODAY?

Table 14. Visitors Reporting Conflict That Day

	2010	2005	2003
No	89%	87%	98%
Yes	7%	3%	2%
Blank	3%	10%	--
Not Sure	1%	<1%	--

The trails that reported having highest conflict on that day were Boulder Canyon Trail (12%), Carolyn Holmberg Preserve (12%), and Coal Creek Trail (11%). The trails that reported having lowest conflict on that day were Legion Park (2%), Bald Mountain Scenic Area (2%), and Hall Ranch (3%).

Question 11b. Which of these best describes that conflict?

Table 15. Top 5 Conflicts Reported That Day

	2010
Dogs Off-Leash	21%
Bikers Not Yielding	15%
Dog Droppings	14%
Horse Droppings	12%
Bikers Communication	9%

Question 12: Have you experienced conflict at this park in the PAST YEAR?

Table 16. Visitors Reporting Conflict in the Past Year

	2010	2005
No	80%	82%
Yes	13%	7%
Blank	6%	10%
Not Sure	1%	1%

The three trails that reported having the highest conflict in the past year were Twin Lakes (26%), Coal Creek Trail (26%), and Niwot Monarch Loop Trail (24%). The three trails that reported having the lowest conflict in the past year were Bald Mountain Scenic Area (2%), Legion Park (2%), and Caribou Ranch (5%).

Question 12b. Which of these best describes that conflict?

Table 17. Top 5 Conflicts Reported in Past Year

	2010
Dogs Off-Leash	28%
Bikers Not Yielding	13%
Dog Droppings	10%
Horse Droppings	10%
Bikers Communication	8%
Bikers Speed	8%
Other	8%

Both “daily” and “annual” rates of conflict were significantly higher than in previous studies. In the 2005 5YS, both Question 11b and Question 12b were open-ended. The most common responses provided in 2005 were categorized and used in 2010 as respondent options for conflict. The ability to read through the possible conflicts and contemplate whether they experienced them may have inflated the percentage of conflicts reported by visitors. The “other” conflicts that were reported were extremely variable and are included in Appendix D (p. 53).

Information Seeking Prior to Visit

Question 13a: Did you seek information about this park prior to your visit today?

Table 18. Seek Information Prior to Visit

	Percentage (%)
No	79%
Yes	18%
Blank	3%

Question 13b: [Prior to your visit today] where did you get that information?

Table 19. Where obtained information

	Percentage (%)
Open Space Website	8%
Guide book	4%
Word of Mouth	3%
Open Space Brochure	1%
Saw sign on road	<1%
Newspaper	<1%
Facebook	<1%
Twitter	--
Blank	83%



For the majority of respondents who sought information prior to their visit, it was their first time visiting the property (42%). Visitors from Denver (37%) and Outside of Colorado (30%) are the most likely to seek information. Respondents from outside of Colorado were the only respondents to receive more information from “word of mouth” (33%) than from the open space website (22%).

Contact with BCPOS Staff

Question 14a: Other than the surveyor, did you have contact with any other BCPOS employees or volunteers during your visit today?

Table 20. Contact w/ Employee

	Percent
No	88%
Yes	8%
No Response	4%

Eight percent of respondents had contact with BCPOS staff that day, amounting to a total of nearly 200 people. People from Nederland (11%) had the highest percentage of contact with BCPOS employees, followed by Longmont (9%).



Question 14b: Would it have been beneficial to have contact with BCPOS staff or volunteers?

Table 21. Benefit from Contact w/ Employee

	Percent
No	39%
Yes	4%
No Response	57%

Although the overall percentage of people who recorded that it would have been beneficial for them to have contact with an employee was low, the percentages varied widely by property and residency.

Hall Ranch Antelope had 0% of respondents say “yes,” whereas 16% of visitors at Mud Lake reported that they would have benefited from contact with an employee. Furthermore, 15% of respondents from

outside of Colorado and 12% of respondents from Denver, Longmont, and Nederland said they would have benefited from contact with a BCPOS employee.



Question 14c: How would you rate the customer service you received?

The percentages for this question only represent the 4% of visitors who responded to the question.

Table 22. Customer Service Rating (1-5 scale)

	Percent
5: Excellent	77%
4	15%
3: Average	6%
2	1%
1: Poor	1%

Crowding Perception

Question 15: While visiting this park today, did you feel crowded?

Table 23. Crowding Perceptions (1-5 scale)

	2010	2005
1: Not at all crowded	67%	65%
2	18%	23%
3: Somewhat crowded	7%	10%
4	1%	1%
5: Very Crowded	1%	<1%
Not Sure	--	--
Blank	6%	--

Respondents were asked to rate their “crowded” feeling on a scale of 1 to 5. Eighty-five percent of respondents reported crowding at levels of one or two. Only one percent of visitors stated feeling “very crowded.”



Visitor Satisfaction

Question 16: Thinking about all of your visits to this park only, please rate each of the following items on a scale of 1 to 5:

Table 24. Quantity Scale from 1 to 5

1	2	3	4	5
Too few		About Right		Too Many

Table 25. Rating for Quantity of Amenities

	<i>Overall Rating</i>
# Signs w/ Directions	2.9
# Signs w/ Rules	2.9
# Benches/Picnic Tables	2.7

Table 26. Satisfaction Scale from 1 to 5

1	2	3	4	5
Not at all satisfied		Somewhat Satisfied		Very Satisfied

Table 27. Satisfaction w/ Trailhead Design and Maintenance

	<i>Overall Rating</i>
Design of Trailhead (traffic flow, restroom location)	4.1
Maintenance of Trailhead (trash removal, clean restrooms)	4.2

While most visitors indicated that the quantities of amenities were about right, 24% of respondents recorded that they would like more benches. Furthermore, the request for more benches was one of the top three improvements offered for Bald Mountain Scenic Area, Coal Creek Trail, Pella Crossing, Twin Lakes, Walden Ponds Wildlife Habitat, and Walker Ranch’s Meyers Homestead Trail.

The design and maintenance of trailheads received a rating between somewhat satisfied and very satisfied. Furthermore, the maintenance of a property was listed as one of the top five reasons behind a park rating (see p. 9). See Appendix E (p. 55) and Appendix F (p. 59) for a list of respondents' top five comments regarding the design and maintenance of trailheads by property.



Sign Usefulness

Question 17: *Do the signs at this trailhead provide clear, useful information that you can understand?*

Table 28. Sign Usefulness

	Percent
Yes	82%
Not Sure	12%
No Response	5%
No	1%

See Appendix G (p. 63) for a list of respondents' top five comments regarding the usefulness of signs by property.



Residency

Question 18: *Where is your home?*

Table 29. Residency

	2010		2005		2000	
	POS visitors	Census Data *	POS visitors	Census Data	POS visitors	Census Data
Boulder	31%	33%	29%	36%	32%	35%
Longmont	17%	28%	17%	26%	20%	28%
None of these - But in Colorado	9%	--	15%	--	--	--
Denver	6%	--	--	--	--	--
Lafayette	6%	9%	5%	9%	4%	8%
Outside Colorado	6%	--	5%	--	--	--
Unincorporated Boulder County	5%	--	15%	17%	11%	16%
Broomfield	5%	--	4%	--	--	--
Erie	3%	6%	1%	2%	--	3%
Louisville	3%	6%	4%	7%	9%**	7%
Niwot	3%	--	2%	--	--	--
Lyons	2%	<1%	1%	1%	--	1%
Nederland	2%	1%	1%	<1%	--	<1%
Superior	1%	4%	1%	3%	9%**	4%
Ward	<1%	--	--	<1%	--	<1%
Gold Hill	<1%	--	--	--	--	--

Length of Boulder County Residency

Question 19: *IF YOU LIVE IN BOULDER COUNTY, how long have you lived here?*

Table 30. Length of Boulder County Residency

	2010	2005	2000	1995
10 or more years	62%	49%	33%	29%
5-9 years	16%	21%	15%	11%
1-4 years	16%	21%	19%	16%
Less than 1 year	6%	7%	23%	29%

Since 1995, the percentage of those who live in Boulder County for 10 or more years has continually increased. However, 26% of respondents reported that they do not live in Boulder County.

* 2009 data

** In the 2000 5YS, Superior and Erie were counted together.

Respondent Gender

Question 20: Please check your gender:

Table 31. Respondent Gender

	2010	2005	2000	1995
Male	51%	53%	62%	70%
Female	46%	42%	38%	30%
Blank	3%	5%	--	--

The ratio of female to male visitors has been increasing since 1995.

Respondent Education Level

Question 21: How would you describe your highest level of education?

Table 32. Education Level

	2010	2005	2000	1995
BA/BS Degree	39%	37%	32%	31%
Master's/PhD	35%	33%	20%	20%
Some college/technical school	18%	20%	32%	34%
High School Diploma	4%	4%	7%	10%
Some high school or less	2%	2%	6%	14%
Blank	2%	4%	--	--

This shows that the percentage of visitors with a Bachelor's, Master's, or PhD degree has continued to increase since 1995.

Reported Race/Ethnicity

Question 22: Which of the following best describes your race or ethnic heritage?

Table 33. Reported Race/Ethnicity

	2010	2005	2000	1995
White/Caucasian	91%	57%	82%	86%
None of these	4%	38%	6%	1%
Hispanic/Chicano	3%	2%	7%	6%
Asian American	2%	2%	4%	5%
African American	<1%	<1%	<1%	2%

Of the visitors who reported to identify as "None of these" ethnicities, the most common other responses were Native American or a combination of multiple ethnicities.

Table 34. Reported Ethnicity of BCPOS versus Boulder County 2006 – 2008 Census Data

	2010 BCPOS	Census Data
White/Caucasian not Hispanic	91%	74%
None of these	4%	--
Hispanic/Chicano	3%	13%
Asian American	2%	4%
African American	<1%	1%

Table 34 compares the percentage of reported ethnicities from BCPOS with the percentage of reported ethnicities from the 2006-2008 census data. The table shows that BCPOS has a higher representation of White/Caucasian visitors and a smaller percentage of Hispanic and Asian American visitors compared to Boulder County’s population overall.

Annual Income

Question 23: What was your income last year?

Table 35. Annual Income

	2010	2005
\$100,000-199,999	18%	14%
\$70,000-99,999	17%	10%
\$30,000-49,999	16%	20%
\$50,000-69,999	15%	19%
No Response	14%	16%
\$10,000-29,999	8%	10%
Less than \$10,000	7%	7%
\$200,000 or more	5%	4%



Comments

Question 24: If there is anything else you would like to tell us, please continue writing on the back:

At the end of the survey, respondents were provided a space to add any comments or concerns of their own. These comments were categorized into two categories: positive comments and suggestions for improvement. The most common comments are illustrated in Table 36 and Table 37. For a complete listing of comments, see Appendix H (p. 67) and Appendix I (p. 74).

Table 36. Most Common Positive Comments

2010	2005
% of Total Responses	% of Total Responses
8%	25%
Thanks/Thank you	Thanks/Thank you
Beautiful Park	Aesthetic comments e.g. “pretty”
Great Park/Good Work	Keep up the good work

Table 37. Most Common Suggestions

2010	2005
% of Total Responses	% of Total Responses
6%	13%
Build more trails/More access	Build more trails
Build more biking trails/More biking access	Build more biking trails
Disagreement with various Dog Regulations	Allow dogs off-leash

The most common suggestion was “build more trails/more access.” However, only 29% of respondents recorded that there were “not enough trails” when specifically asked about their opinion on the number of trail miles (see p. 11).



Property Analysis

Anne U. White Trail – 9.0 Rating Property Highlights

Property Description

The Anne U. White Trail at Fourmile Canyon Creek Open Space:

- Prohibits biking
- Has parking limited to five spaces
- Has a short 1.7 (3.4 round trip) mile hike in a canyon along a creek
- Has the highest percentage of respondents from Boulder of any property (71%)
- Has the highest percentage of female visitors of any property (69%)
- Has the highest percentage of visitors who hold a Bachelor’s degree of any property (52%)
- Has a high percentage of visitors who are under 10 years of age (21%)

Visitor Demographics

From the 114 respondents, it can be concluded that the average visitor to the Anne U. White trail:

- Most likely does not own a dog (60%)
- Is 25 years or older (71%)

Visitor Activity

Primary Activity	2010	2005	2000
Hike	78%	84%	85%
Walk the Dog	8%	--	4%
View Wildlife	6%	3%	15%
Run	5%	8%	3%
Other	3%	5%	--

Visitor Experience

After visiting the property, respondents’ answers reflected the following preferences, opinions, and visitation patterns:

- Just behind Legion Park, Anne U. White received the lowest rating for satisfaction, slightly above somewhat satisfied, with the design of the trailhead.
- Along with Coal Creek Trail, Anne U White respondents considered the use of renewable energy a more acceptable use of open space than visitors to other properties (47% acceptable).

Visitor Feedback

One of the top five rated parks, visitors rated Anne U. White an average of 9.0 based on:

- Aesthetic beauty, scenery, and views (17 comments)
- Good/great hike, trail, and/or park (14 comments)
- Enjoyment of the water/creek (13 comments)

Proposed Improvements

The most common improvement mentioned for Anne U. White is overwhelmingly:

- Need for improved parking (43 comments)

Bald Mountain Scenic Area – 8.6 Rating Property Highlights

Property Description

Bald Mountain Scenic Area:

- Is a small park with low visitation
- Has a short one mile loop trail with views of the Continental Divide
- Has the highest percentage of visitors who have lived in Boulder County for one to four years of any property (19%)
- Has the highest percentage of visitors under 10 years of age of any property (26%)

Visitor Demographics

From the 60 respondents, it can be concluded that the average visitor to Bald Mountain Scenic Area:

- Is from Boulder County (59%) or outside of Colorado (21%)
- Most likely has lived in Boulder County for less than 10 years (38%)
- Is likely to have sought information prior to their visit (25%)

Visitor Activity

Primary Activity	2010	2005	2000
Hike	78%	76%	65%
Picnic	8%	9%	18%
Walk the Dog	5%	--	4%
View Wildlife	3%	3%	9%
Other	6%	12%	--

Visitor Experience

After visiting the property, respondents' answers reflected the following preferences, opinions, and visitation patterns:

- Bald Mountain had the highest percentage of respondents who do not consider the use of agriculture an acceptable use of open space (82% not acceptable).
- Bald Mountain had the highest percentage of people going to the park with family (67%).
- Along with Legion Park, Bald Mountain had the lowest reported conflict for both that day and in the past year. Only 2% reported experiencing conflict that day and in the past year.

Visitor Feedback

Visitors rated Bald Mountain Scenic Area an average of 8.6 based on:

- Aesthetic beauty, scenery, and views (12 comments)
- Good for young children and family (6 comments)
- Well maintained and clean (5 comments)

Proposed Improvements

The most common improvements mentioned for Bald Mountain were:

- Nothing or Perfect (20 comments)
- Better signage (4 comments)

Betasso Preserve – 9.0 Rating Property Highlights

Property Description

Betasso Preserve:

- Is a high visitation park west of Boulder, with a three mile Canyon Loop trail
- Requires mountain bikers to travel one direction on the Canyon Loop Trail
- Prohibits mountain biking on Wednesdays and Saturdays
- Has the highest percentage of visitors over 60 years old of any property (28%)

Visitor Demographics

From the 182 respondents, it can be concluded that the average visitor to Betasso Preserve:

- Is from Boulder (43%) or Denver (11%)

Visitor Activity

Primary Activity	2010	2005	2000
Hike	45%	47%	37%
Mountain Bike	27%	33%	45%
Run	7%	14%	3%
Walk the Dog	6%	--	--
View Wildlife	4%	--	15%
Other	11%	6%	--

Visitor Experience

After visiting the property, respondents' answers reflected the following preferences, opinions, and visitation patterns:

- Along with the Walker Ranch Loop Trail, Betasso Preserve had the second highest percentage of visitors who sought information prior to their visit (30%). Furthermore, it had the highest percentage of respondents who got information from the department's website (14%).
- Betasso Preserve had the highest percentage of visitors indicate that there could be more trails (48%).
- Betasso Preserve had the highest percentage of visitors who came with an organized group (7%).
- Betasso Preserve had the highest volume of traffic going to the property (9% of all cars).
- Respondents reported experiencing 10% conflict that day, a 5% increase from the 2005 Five-Year Study.

Visitor Feedback

One of the top five rated parks, visitors rated Betasso Preserve an average of 9.0 based on:

- Aesthetic beauty, scenery, and views (29 comments)
- Good/great hike, trail, and/or park (25 comments)
- Well maintained and clean (15 comments)

Proposed Improvements

The most common improvement mentioned for Betasso Preserve was:

- Longer and More Trails (18 comments)

Boulder Canyon Trail – 8.9 Rating Property Highlights

Property Description

The Boulder Canyon Trail:

- Is jointly owned by the City of Boulder and Boulder County; Boulder County’s portion begins near the western Boulder city limits.
- Has the highest percentage of 10 to 18 year old visitors of any property (27%)
- Has the highest percentage of respondents who identified as Asian American of any property (4%)

Visitor Demographics

From the 158 respondents, it can be concluded that the average visitor to Boulder Canyon Trail:

- Is from Boulder (47%) or Outside of Colorado (25%)

Visitor Activity

Primary Activity	2010	2005	2000
Hike	42%	44%	43%
Bike	36%	29%	42%
Run	13%	11%	15%
Walk the Dog	4%	--	--
View Wildlife	1%	3%	--
Other	4%	13%	--

Visitor Experience

After visiting the property, respondents’ answers reflected the following preferences, opinions, and visitation patterns:

- Boulder Canyon Trail respondents considered the use of open space for urban buffers less acceptable than visitors to other properties (45% unacceptable).
- Boulder Canyon Trail had the highest percentage of visitors who got to the property by bike (32%).
- Along with Carolyn Holmberg Preserve, Boulder Canyon Trail had the highest reported conflict that day (12%). Conflicts were generally caused by dogs that were off-leash and biker communication.

Visitor Feedback

Visitors rated Boulder Canyon Trail an average of 8.9 based on:

- Aesthetic beauty, scenery, and views (27 comments)
- Good/great hike, trail, and/or park (13 comments)
- Well maintained and clean (12 comments)

Proposed Improvements

The most common improvement mentioned for Boulder Canyon Trail was:

- More trail and/or parking lot maintenance (13 comments)

Caribou Ranch Open Space – 9.3 Rating Property Highlights

Property Description

Caribou Ranch Open Space:

- Prohibits mountain bikes and dogs
- Is closed annually from April 1st to June 30th for migratory bird and elk calving
- Has the second highest percentage of visitors over 60 years old of any property (26%)

Visitor Demographics

From the 123 respondents, it can be concluded that the average visitor to Caribou Ranch:

- Is from Boulder (36%) or Nederland (13%).
- Is most likely over 40 years old (69%)

Visitor Activity

Primary Activity	2010	2005
Hike	83%	89%
Run	6%	9%
Picnic	5%	2%
Ride a Horse	2%	--
View Wildlife	2%	--
Other	2%	--

Visitor Experience

After visiting the property, respondents' answers reflected the following preferences, opinions, and visitation patterns:

- Caribou Ranch had the highest percentage of visitors who got to the park in a car (99%).
- Caribou Ranch had the highest percentage of visitors report that signs were clear and helpful (95%).
- Caribou Ranch had the highest percentage of visitors that had contact with an employee (24%).
- Caribou Ranch had the highest number of people coming to the park with family (8.3% of visitors with family from all properties).
- Caribou Ranch had the highest percentage of hikers of any property (83%).

Visitor Feedback

The highest rated park, visitors rated Caribou Ranch Open Space a 9.3 based on:

- Aesthetic beauty, scenery, and views (22 comments)
- Well maintained and clean (13 comments)
- Secluded, peaceful, and quiet (9 comments)
- Good/great hike, trail, and/or park (9 comments)

Proposed Improvements

The most common improvement mentioned for Caribou Ranch Open Space was:

- Longer and More Trail(s) (16 comments)

Carolyn Holmberg Preserve at Rock Creek Farm – 8.3 Rating Property Highlights

Property Description

Carolyn Holmberg Preserve:

- Is connected to Broomfield via two trails
- Includes Carolyn Holmberg Preserve at Rock Creek Farm, which has been preserved and maintained as an active producing farm and is a designated cultural landscape
- Has the highest percentage of respondents who do not live in Boulder County of any property (49%)

Visitor Demographics

From the 90 respondents, it can be concluded that the average visitor to Carolyn Holmberg Preserve:

- Is most likely from Broomfield (33%) or Lafayette (22%)
- Most likely has some college (30%) or a BA/BS degree (33%)

Visitor Activity

Primary Activity	2010	2005	2000
Bike	28%	14%	--
Hike	24%	31%	18%
Fish	21%	20%	60%
Walk the Dog	12%	3%	--
Run	4%	6%	3%
View Wildlife	4%	9%	12%
Other	7%	17%	--

Visitor Experience

After visiting the property, respondents' answers reflected the following preferences, opinions, and visitation patterns:

- Perhaps due to the proximity to farmland, respondents considered the use of agriculture more acceptable on open space than visitors to nearly all other properties (47% acceptable).
- One quarter of visitors got to the park on their bike (24%).
- Most visitors go to the park at least, if not more, than once a month (56%).
- Along with Boulder Canyon Trail, Carolyn Holmberg Preserve had the highest reported conflict that day (12%). Conflicts reported were dogs off-leash, dog droppings, and horse droppings.

Visitor Feedback

Visitors rated Carolyn Holmberg Preserve an average of 8.3 based on:

- Secluded, peaceful, and quiet (17 comments)
- Aesthetic beauty, scenery, and views (15 comments)
- Good/great hike, trail, and/or park (14 comments)

Proposed Improvements

The most common improvement mentioned for Carolyn Holmberg Preserve is:

- More trees and shade (9 comments)

Coal Creek Trail – 8.5 Rating Property Highlights

Property Description

Coal Creek Trail:

- Is a jointly owned “neighborhood trail” with the cities of Lafayette and Louisville.

Visitor Demographics

From the 139 respondents, it can be concluded that the average visitor to Coal Creek Trail:

- Is most likely from Lafayette (49%), Broomfield (15%), or Erie (10%)
- Is most likely female (59%)

Visitor Activity

Primary Activity	2010	2005
Hike	35%	53%
Bike	27%	19%
Run	19%	22%
Walk the Dog	14%	4%
Photography/Art	3%	--
View Wildlife	1%	1%
Other	1%	1%

Visitor Experience

After visiting the property, respondents’ answers reflected the following preferences, opinions, and visitation patterns:

- Coal Creek Trail had the second highest percentage of runners (19%).
- Nearly half of all visitors got to the park by riding their bike, running, or hiking (41%).
- A high percentage of visitors go to this trail alone (46%).
- Coal Creek Trail respondents exhibited the highest support of any property for the use of agriculture (49% acceptable) and renewable energy (47% acceptable) as an acceptable use of open space.
- Visitors to Coal Creek Trail experienced four percent higher conflict than average for that day (11%) and extremely high conflict in the past year (26%). Conflicts recorded include dogs off-leash, dog droppings, dogs on-leash but not controlled, biker communication, and biker’s speed.

Visitor Feedback

Visitors rated Coal Creek Trail an average of 8.5 based on:

- Well maintained and clean (27 comments)
- Enjoyment of the creek/water (25 comments)
- Enjoyment of the shade and/or trees (18 comments)

Proposed Improvements

The most common improvement mentioned for Coal Creek Trail was:

- Longer and More Trail(s) (12 comments)

Fairgrounds Lake – 8.3 Rating Property Highlights

Property Description

Fairgrounds Lake:

- Is a “neighborhood trail” that connects to the St. Vrain Greenway Trail in Longmont.

Visitor Demographics

From the 76 respondents, it can be concluded that the average visitor to Fairgrounds Lake:

- Is most likely from Longmont (65%)
- Frequently owns a dog (50%)

Visitor Activity

Primary Activity	2010	2005	2000
Walk the Dog	28%	5%	--
Hike	21%	46%	52%
Bike	20%	16%	10%
Run	12%	14%	13%
View Wildlife	5%	--	26%
Fish	4%	9%	13%
Special Event	3%	--	--
Other	7%	10%	--

Visitor Experience

After visiting the property, respondents’ answers reflected the following preferences, opinions, and visitation patterns:

- Fairgrounds Lake had the highest percent of special event activities of any property (3%). This may be due to the Farmers Market that took place every weekend.
- Nearly half of all visitors go to the park alone (45%).
- More than half of the respondents that own a dog brought it with them that day (61%).
- Fairgrounds Lake has the lowest percentage of visitors that seek information prior to their visit (3%). This park is located off of a main road and across from the Boulder County Fairgrounds.
- Most visitors go to the park at least, if not more, than once a month (79%).

Visitor Feedback

Visitors rated Fairgrounds Lake an average of 8.3 based on:

- Good/great hike, trail, and/or park (23 comments)
- Aesthetic beauty, scenery, and views (11 comments)
- Enjoyment of the lake/water (8 comments)

Proposed Improvements

The most common improvements mentioned for Fairgrounds Lake are:

- Needs potable water or a water fountain (5 comments)
- More trashcans (5 comments)
- Put in bathrooms at both parking lots (5 comments)

Hall Ranch – 9.0 Rating Property Highlights

Property Description

Hall Ranch:

- Is a major mountain biking destination right outside of Lyons
- Prohibits dogs
- Has the second highest percentage of visitors who are male of any property (69%)

Visitor Demographics

From the 153 respondents, it can be concluded that the average visitor to Hall Ranch:

- Is most likely from Boulder (31%), Denver (15%), or Longmont (18%); only 7% of visitors reported to be from Lyons

Visitor Activity

Primary Activity	2010	2005	2000
Bike	71%	53%	51%
Hike	18%	29%	31%
Run	8%	6%	4%
Picnic	2%	2%	--
Other	1%	10%	--

Visitor Experience

After visiting the property, respondents' answers reflected the following preferences, opinions, and visitation patterns:

- Although dogs are prohibited, two visitors reported bringing their dog with them that day.
- Hall Ranch had the highest percentage of bikers of any property (71%).
- Nearly half of visitors went to the park alone (43%).
- Only 2 respondents reported experiencing conflict that day. On the other hand, 14% of respondents reported experiencing conflict in the past year.

Visitor Feedback

Visitors rated Hall Ranch an average of 9.0 based on:

- Good/great hike, trail, and/or park (26 comments)
- Aesthetic beauty, scenery, and views (24 comments)
- Excellent mountain biking (22 comments)

Proposed Improvements

The most common improvement mentioned for Hall Ranch was:

- Needs potable water or a water fountain (11 comments)

Heil Valley Ranch – 8.8 Rating Property Highlights

Property Description

Heil Valley Ranch:

- Is a major foothills mountain biking destination that has both multi-use trails (Wapiti Trail and Ponderosa Loop Trail) and trails for pedestrian use only (Lichen Loop)
- Prohibits dogs

Visitor Demographics

From the 167 respondents, it can be concluded that the average visitor to Heil Valley Ranch:

- Is usually from Boulder County (85%) and most often lives in Boulder (35%) or Longmont (21%)
- Is most likely male (64%)

Visitor Activity

Primary Activity	2010	2005	2000
Bike	53%	60%	--
Hike	29%	25%	64%
Run	15%	7%	2%
Picnic	1%	1%	25%
Other	2%	7%	--

Visitor Experience

After visiting the property, respondents' answers reflected the following preferences, opinions, and visitation patterns:

- Heil Valley Ranch had the greatest amount of acceptance for using open space to build trails (98% acceptance).
- Most visitors came to the park in a car (90%), either with family (30%) or alone (44%).
- A high percentage of visitors found using urban buffers on open space unacceptable (35% unacceptable).
- Other than Hall Ranch, Heil Valley Ranch had the highest percentage of bikers (53%).

Visitor Feedback

Visitors rated Heil Valley Ranch an average of 8.8 based on:

- Aesthetic beauty, scenery, and views (17 comments)
- Good/great hike, trail, and/or park (15 comments)
- Well maintained trail(s) (13 comments)

Proposed Improvements

The most common improvements mentioned for Heil Valley Ranch were:

- Allow dogs (7 comments)
- Provide potable water or water fountain (7 comments)

Heil Valley Ranch - Only Picture Rock Trailhead Visitors – 8.9 Rating Property Highlights

Note: Results from this trailhead are property specific and not compared with other properties in the analysis. This is due to the fact that the results are also included under the umbrella of respondents from Heil Valley Ranch.

Property Description

Heil Valley Ranch Picture Rock Trailhead:

- Is a major foothills mountain biking destination that was opened in September 2008
- Is a 5.2-mile trail that branches off from the existing Wild Turkey Trail and ends near Lyons
- Prohibits dogs
- Has a high percentage of visitors in the 40 to 60 year old age range (61%)

Visitor Demographics

From the 68 respondents, it can be concluded that the average visitor to Heil Valley Ranch Picture Rock:

- Is usually from Boulder County (85%), and most often lives in Boulder (40%) or Longmont (20%)
- Is most likely male (64%)

Visitor Activity

Primary Activity	2010
Bike	59%
Hike	22%
Run	18%
Picnic	1%

Visitor Experience

After visiting the property, respondents' answers reflected the following preferences, opinions, and visitation patterns:

- Heil Valley Ranch Picture Rock had a large amount of acceptance for using open space to build trails (99%).
- Conversely, Heil Valley Ranch had a high percentage of respondents who think it is not acceptable use of open space to preserve views (16% not acceptable) or conserve ecosystems (28% not acceptable).
- Nearly a quarter of visitors used alternative means to get to the park including biking, running, and hiking (22%).
- Most visitors came to the park alone (56%).

Visitor Feedback

Visitors rated Heil Valley Ranch Picture Rock an average of 8.9 based on:

- Good/great hike, trail, and/or park (11 comments)
- Well maintained trail(s) (11 comments)
- Aesthetic beauty, scenery, and views (9 comments)

Proposed Improvements

The most common improvements mentioned for Heil Valley Ranch Picture Rock were:

- Longer and more Trail(s) (5 comments)
- Allow dogs (5 comments)

Lagerman Reservoir – 7.7 Rating Property Highlights

Property Description

Lagerman Reservoir:

- Is a fishing destination and is stocked occasionally by the Colorado Division of Wildlife
- Is closed seasonally on the west end to protect nesting osprey
- Has the highest percentage of visitors who identified as Hispanic of any property (10%)

Visitor Demographics

From the 98 respondents, it can be concluded that the average visitor to Lagerman Reservoir:

- Is most likely from a city or town in Boulder County (83%)
- Is most likely male (62%)

Visitor Activity

	2010	2005	2000
Fish	28%	34%	39%
View Wildlife	12%	5%	12%
Hike	11%	23%	16%
Run	8%	7%	--
Picnic	7%	4%	18%
Walk the Dog	6%	2%	--
Bike	2%	9%	--
Family Gathering	2%	2%	--
Other	24%	14%	--

Visitor Experience

After visiting the property, respondents' answers reflected the following preferences, opinions, and visitation patterns:

- Lagerman Reservoir reported a lower amount of acceptance for using open space for renewable energy (71% not acceptable) and for wildlife habitat (20% not acceptable).
- The property had the highest percentage of anglers of any property (28%).
- The majority of visitors do not bring dogs (87%), although many own dogs (51%).
- Most people drove to the park (90%), although a few did run, bike, or ride a horse (10%).
- The respondents reported little conflict both that day (3%) and in the past year (5%). The only conflicts mentioned were dogs off-leash and dog droppings.
- Lagerman Reservoir had one of the highest percentages of other activities (19%), which included kayaking, canoeing, relaxing, and flying model airplanes.

Visitor Feedback

Visitors rated Lagerman Reservoir an average of 7.7 based on:

- Well maintained and clean (19 comments)
- Does not have enough shade and/or trees (14 comments)
- Secluded, peaceful, and quiet (11 comments)

Proposed Improvements

The most common improvement mentioned for Lagerman Reservoir was:

- More shade and trees (21 comments)

Legion Park – 7.3 Rating Property Highlights

Property Description

Legion Park:

- Is a very small park with a short loop trail that goes around the reservoir
- Is located just off a busy road, Arapahoe Road
- Overlooks Valmont Reservoir and has ample bird-watching opportunities
- Represents the highest percentage of male respondents (76%)
- Has the second highest percentage of visitors in the 18-24 year old range (13%)
- Has the highest percentage of respondents who identified as African American (5%)

Visitor Demographics

From the 64 respondents, it can be concluded that the average visitor to Legion Park:

- Is most likely from Boulder (26%), Lafayette (13%), or outside Boulder County (39%)

Visitor Activity

	2010	2005	2000
Picnic	27%	15%	23%
View Wildlife	20%	7%	15%
Hike	17%	10%	12%
Photography/Art	5%	7%	--
Run	3%	2%	--
Other	28%	41%	--

Visitor Experience

After visiting the property, respondents' answers reflected the following preferences, opinions, and visitation patterns:

- Legion Park received the lowest rating in sign usefulness. Only 55% of respondents said they were useful.
- Although dogs are allowed, no one brought their dog with them to Legion Park.
- Legion Park had the second highest percentage of people who do not own dogs (66%).
- The property had the least amount of acceptance for using open space for renewable energy (72% not acceptable) and building trails (16% not acceptable).
- Most of visitors are alone (63%) and there were the most picnickers of any property (27%).
- Legion Park and Bald Mountain had the lowest percent of conflict that day (2%) and in the past year (2%).
- Legion Park had the highest percentage of other activities (25%) which included taking a lunch break, sitting, and relaxing.

Visitor Feedback

Visitors rated Legion Park an average of 7.3 based on:

- Aesthetic beauty, scenery, and views (27 comments)
- Secluded, peaceful, and quiet (10 comments)
- Well maintained and clean (7 comments)

Proposed Improvements

The most common improvement mentioned for Legion Park was:

- More shade and trees (8 comments)

Mud Lake – 8.5 Rating Property Highlights

Property Description

Mud Lake:

- Is located between the town of Nederland and the Indian Peaks Wilderness Area
- Unlike neighboring Caribou Ranch, both mountain biking and dogs are allowed
- Has a high percent of visitors that are under eighteen years old (32%)

Visitor Demographics

From the 115 respondents, it can be concluded that the average visitor to Mud Lake:

- Is most likely from Boulder (35%) or Nederland (21%)
- Is most likely female (59%)

Visitor Activity

	2010
Hike	50%
Bike	18%
Walk Dog	9%
Picnic	6%
Rode a Horse	6%
Family Gathering	4%
Other	7%

Note: In 2005, insufficient surveys were collected to produce valid results. In studies prior to 2005, Mud Lake was not managed by Boulder County Parks and Open Space.

Visitor Experience

After visiting the property, respondents' answers reflected the following preferences, opinions, and visitation patterns:

- Mud Lake had the highest percentage of people who stated that they would have benefited from contact with an employee (16%).
- Mud Lake had the highest number of carpooling people, with an average of 2.8 people per vehicle.
- Mud Lake had the highest percentage of equestrians of any property (6%).
- Mud Lake had the highest percentage of visitors having a family gathering of any property (4%).
- The majority of visitors are with family (64%).
- Respondents reported having below average conflict both that day (5%) and in the past year (10%). Reported descriptions of the conflict included: bikers not yielding, dogs off-leash, dog and horse droppings, general discourtesy of others, and biker's speed.

Visitor Feedback

Visitors rated Mud Lake an average of 8.5 based on:

- Good/great hike, trail, and/or park (23 comments)
- Aesthetic beauty, scenery, and views (15 comments)
- Good amenities (dog leashes, benches, picnic areas, restrooms) (12 comments)

Proposed Improvements

The most common improvement mentioned for Mud Lake was:

- Longer and More Trail(s) (13 comments)

Niwot Loop Trail – 8.6 Rating Property Highlights

Property Description

The Niwot Loop Trail:

- Is a “Neighborhood trail” that goes through residential areas, as well as a large prairie dog colony
- Has the second highest percentage of female respondents of any property (63%)
- Has the highest percentage of visitors who have lived in Boulder County 15 or more years, along with Walden Ponds (53%)

Visitor Demographics

From the 73 respondents, it can be concluded that the average visitor to the Niwot Loop trail:

- Is most likely from Niwot (55%)
- Most likely owns a dog (55%)

Visitor Activity

	2010	2005
Hike	29%	55%
Run	27%	19%
Bike	26%	22%
Walk the Dog	14%	3%
Other	4%	1%

Visitor Experience

After visiting the property, respondents’ answers reflected the following preferences, opinions, and visitation patterns:

- Niwot Loop Trail had the highest percentage of acceptance for using open space as urban buffers (70%).
- Niwot Loop Trail had the least amount of acceptance for using open space to conserve ecosystems (29% against).
- Niwot Loop Trail had the highest percentage of runners (27%) and people who got to the park by running (16%).
- The majority of respondents did not get to the park by car, but rather arrived by biking (23%), running (16%), or hiking (16%).
- Most respondents experienced a low amount of conflict that day (6%), but a much larger amount of conflict in the past year (24%). The most common conflicts mentioned were dogs off-leash, dog droppings, and biker communication.

Visitor Feedback

Visitors rated Niwot Loop trail an average of 8.6 based on:

- Well maintained and clean (19 comments)
- Good/great hike, trail, and/or park (8 comments)
- Aesthetic beauty, scenery, and views (8 comments)

Proposed Improvements

The most common improvement mentioned for the Niwot Loop trail was:

- Add a bathroom (8 comments)

Pella Crossing – 8.7 Rating Property Highlights

Property Description

Pella Crossing:

- Is a major dog walking and fishing destination, with multiple ponds and trails.
- Had the greatest percentage of people who own dogs (58%)

Visitor Demographics

From the 144 respondents, it can be concluded that the average visitor to Pella Crossing:

- Is most likely from Longmont (59%)

Visitor Activity

	2010	2005	2000
Walk the Dog	26%	3%	12%
Hike	24%	51%	33%
Fish	22%	32%	40%
Bike	8%	1%	--
View Wildlife	8%	1%	4%
Run	6%	8%	--
Picnic	4%	1%	10%
Other	2%	3%	--

Visitor Experience

After visiting the property, respondents' answers reflected the following preferences, opinions, and visitation patterns:

- Pella Crossing had the second highest percentage of people who think they would have benefited from contact with an employee (15%).
- A high percentage of visitors brought their dog with them today (35%).
- Pella Crossing had the second highest percentage of anglers (22%).
- The majority of visitors arrived by car (91%), however nearly 8% rode their bikes.
- Many of the visitors arrived alone (46%) or with family (38%).
- Nearly all visitors have been to Pella Crossing before (90%) and many visit at least once a month (74%).

Visitor Feedback

Visitors rated Pella Crossing an average of 8.7 based on:

- Well maintained and clean (35 comments)
- Aesthetic beauty, scenery, and views (26 comments)
- Good amenities (dog leashes, benches, picnic areas, restrooms) (18 comments)

Proposed Improvements

The most common improvement mentioned for Pella Crossing was:

- Add more trashcans (15 comments)

Rabbit Mountain – 8.6 Rating Property Highlights

Property Description

Rabbit Mountain:

- Is a destination for hikers, bikers, and runners
- Is closed seasonally on the east end of the property for nesting eagles.
- Has a high percentage of visitors who own dogs (54%)

Visitor Demographics

From the 142 respondents, it can be concluded that the average visitor to Rabbit Mountain:

- Is most likely from Longmont (59%)

Visitor Activity

	2010	2005	2000
Hike	61%	58%	45%
Bike	15%	23%	23%
Run	12%	14%	3%
Walk the Dog	10%	--	2%
Ride a Horse	1%	3%	4%
Picnic	1%	1%	16%
Other	--	1%	--

Visitor Experience

After visiting the property, respondents' answers reflected the following preferences, opinions, and visitation patterns:

- The majority of visitors came with family (43%) or alone (35%).
- Many visitors come to Rabbit Mountain monthly (28%) or once or twice in the past year (18%).
- Most visitors own a dog (54%), although less than half who own a dog brought it with them today (45%).
- The visitor had close to average conflict both that day (9%) and in the past year (11%). Reported descriptions of the conflict included: bikers not yielding, dogs off-leash, dog and horse droppings, general discourtesy of others, and biker's speed.

Visitor Feedback

Visitors rated Rabbit Mountain an average of 8.6 based on:

- Aesthetic beauty, scenery, and views (38 comments)
- Good/great hike, trail, and/or park (32 comments)
- Well maintained and clean (30 comments)

Proposed Improvements

The most common improvement mentioned for Rabbit Mountain was:

- Longer and More Trail(s) (11 comments)

Twin Lakes – 8.5 Rating Property Highlights

Property Description

Twin Lakes Open Space:

- Is one of three BCPOS properties that allow dogs to be off-leash in a designated area
- Is considered a “neighborhood trail” and connects to both residential and commercial areas
- Has the highest percentage of visitors who have lived in Boulder County for 10 to 14 years of any property (20%)
- Has a high percentage of people who own dogs (54%)

Visitor Demographics

From the 147 respondents, it can be concluded that the average visitor to Twin Lakes Open Space:

- Is most likely from Boulder (57%)
- Is slightly more likely to be male (56%).

Visitor Activity

	2010	2005
Hike	32%	53%
Walk the Dog	32%	16%
Run	14%	13%
Bike	11%	10%
Fish	3%	--
Other	8%	6%

Visitor Experience

After visiting the property, respondents’ answers reflected the following preferences, opinions, and visitation patterns:

- Twin Lakes received the lowest rating in terms of not having enough benches (2.3), signaling there could be more benches.
- Along with Coal Creek Trail, Twin Lakes had the highest reported conflict in the past year (26%).
- Had a high percentage of visitors who own dogs that brought them to the park that day (68%).
- Twin Lakes had the highest percentage of people coming to the park alone (65%).
- Twin Lakes had the highest percentage of dog walkers of any property (32%).
- The majority of visitors came to the park by alternative transportation such as biking, running, and walking (73%).
- Most visitors have been to Twin Lakes before and most visit more than once a week (63%).

Visitor Feedback

Visitors rated Twin Lakes an average of 8.5 based on:

- Well maintained and clean (32 comments)
- Aesthetic beauty, scenery, and views (21 comments)
- Convenience and accessibility (17 comments)

Proposed Improvements

The most common improvement mentioned for Twin Lakes Open Space was:

- Add a bathroom (19 comments)

Walden Ponds Wildlife Habitat – 8.8 Rating Property Highlights

Property Description

Walden Ponds Wildlife Habitat:

- Is a popular wildlife viewing and fishing destination
- Is adjacent to the City of Boulder’s Sawhill Ponds
- Has a high percentage of visitors in the 10-18 year old range (12%)
- Has the highest percentage of visitors who have lived in Boulder County for 15 or more years, along with Niwot Monarch Loop (53%)

Visitor Demographics

From the 110 respondents, it can be concluded that the average visitor to Walden Ponds:

- Is most likely from Boulder County (77%) and frequently from Boulder (35%)

Visitor Activity

	2010	2005	2000
View Wildlife	33%	36%	43%
Hike	25%	37%	30%
Fish	17%	8%	21%
Walk the Dog	8%	2%	2%
Photography/Art	6%	--	--
Picnic	3%	--	12%
Ride a Horse	3%	--	--
Other	5%	17%	--

Visitor Experience

After visiting the property, respondents’ answers reflected the following preferences, opinions, and visitation patterns:

- Walden Ponds had the second highest percentage of people who had contact with an employee (16%).
- Walden Ponds had the greatest acceptance for using open space to preserve views (97%), ecosystems (89%), and wildlife (96%).
- Walden Ponds had the highest percentage of wildlife viewers (33%) and photographers/artists (6%).
- The majority of visitors came with family (44%).
- Most visitors did not bring a dog with them that day (87%).
- The visitor had below average conflict both that day (6%) and in the past year (12%). Reported conflicts included: dogs on-leash but not controlled, dog droppings, dogs off-leash, and bikers disobeying rules.

Visitor Feedback

Visitors rated Walden Ponds an average of 8.8 based on:

- Wildlife viewing and birding opportunities (34 comments)
- Aesthetic beauty, scenery, and views (14 comments)
- Good/great hike, trail, and/or park (10 comments)

Proposed Improvements

The most common improvement mentioned for Walden Ponds was:

- More benches (5 comments)
- Add a bathroom or better bathroom maintenance (5 comments)

Walker Ranch Loop Trailhead – 9.0 Rating Property Highlights

Property Description

Walker Ranch Loop Trailhead:

- Is a destination for hikers, bikers, and runners
- Is close to Boulder, off of Flagstaff Road
- Has the highest percentage of respondents who have lived in Boulder County for less than 1 year of any property (10%)
- Has the highest percentage of visitors in both the 18-24 year old range (14%) and the 25-39 year old range (47%) of any property

Visitor Demographics

From the 142 respondents, it can be concluded that the average visitor to Walker Ranch Loop:

- Is most likely from Boulder (49%) or Denver (12%)
- Is most likely male (61%)

Visitor Activity

	2010	2005	2000
Bike	42%	63%	47%
Hike	41%	33%	40%
Run	10%	2%	2%
Fish	2%	--	5%
Picnic	1%	--	--
View Wildlife	1%	--	11%
Other	3%	4%	--

Visitor Experience

After visiting the property, respondents' answers reflected the following preferences, opinions, and visitation patterns:

- Walker Ranch Loop Trailhead had the highest percentage of people who visited the property with friends that day (39%).
- Many visitors were visiting for the first time (30%) or have been once or twice in the past year (28%).
- A higher percentage of visitors find renewable energy to be an acceptable use of open space (40%).
- Most visitors did not bring a dog with them that day (90%).
- Along with Betasso preserve, Walker Ranch Loop Trail had the second highest percentage of visitors who sought information prior to visiting the park (30%). Furthermore, Walker Ranch Loop trail had the highest number of people report receiving information via “word of mouth” (9.2%).

Visitor Feedback

Visitors rated Walker Ranch Loop Trailhead an average of 9.0 based on:

- Aesthetic beauty, scenery, and views (44 comments)
- Good/great hike, trail, and/or park (28 comments)
- Well maintained and clean (17 comments)

Proposed Improvements

The most common improvement mentioned for Walker Ranch Loop was:

- Allow Bike Access from Eldorado Canyon (10 comments)

Walker Ranch Meyers Homestead Trail – 8.9 Rating Property Highlights

Property Description

Walker Ranch Meyers Homestead Trail:

- Is one of the few extra-wide trails in the BCPOS system
- Is close to Boulder, off of Flagstaff Road
- Has the highest percentage of visitors that hold a Master’s or PhD degree of any property (49%)

Visitor Demographics

From the 91 respondents, it can be concluded that the average visitor to Walker Ranch Meyers:

- Is most likely from Boulder (43%) or Denver (14%)
- Is most likely male (57%)

Visitor Activity

	2010	2005	2000
Hike	65%	51%	51%
Bike	24%	38%	37%
Photography/Art	3%	--	--
Walk the Dog	2%	--	3%
Other	6%	11%	--

Visitor Experience

After visiting the property, respondents’ answers reflected the following preferences, opinions, and visitation patterns:

- This property had the greatest amount of acceptance for using open space to conserve ecosystems (89%).
- This property had the second lowest amount of acceptance among visitors in all the parks for agriculture as an acceptable use of open space (79% not acceptable).
- Visitors arrived to the park by car (93%) or bike (7%).
- Most visitors came with family (47%) or friends (26%).
- Most visitors have not been to Walker Ranch Meyers before (40%) or they have visited once or twice in the past year (30%).
- The visitor had below average conflict both that day (6%) and in the past year (7%). Reported descriptions of the conflict included: bikers not yielding, dogs off-leash, horse droppings, and general discourtesy of others.
- This property had the greatest percentage of people that sought information prior to visiting the open space (43%) and the greatest percentage of people to obtain information from a “guide book” (20%).

Visitor Feedback

Visitors rated Walker Ranch Meyers Homestead Trail an average of 8.9 based on:

- Aesthetic beauty, scenery, and views (30 comments)
- Good/great hike, trail, and/or park (15 comments)
- Well maintained and clean (13 comments)

Proposed Improvements

The most common improvement mentioned for Walker Ranch Meyers was:

- Longer and More Trail(s) (9 comments)

Appendix A

Survey



Parks & Open Space

Boulder County Parks and Open Space conducts this survey **every five years** to better manage our parks and open space for you, the visitor.

Thank you for taking time to participate!

1. Which one activity do you consider your primary activity today at this park? (Check **ONLY one**)

- Hike Bike Run Walk the dog
 Ride a Horse Fish Picnic View Wildlife
 Special Event Family gathering Photography/Art Other: **please describe:**

2. How did you get to this park today?

- Car: Including you, **HOW MANY PEOPLE** rode in the car? _____
 Bike Run Hike Horseback Other (*describe*): _____

3. Which of the following best describes who you traveled here with today?

- Alone Family
 Friends Organized group: **please describe** _____

4. Please write the number of people in your group that are in the following age categories:

- Under 10 years old 10-18 yrs. old 18-24 yrs old 25-39 40-60 Over 60

5. In the past year, about how often have you visited this park?

- More than once a week About once a month Once or twice in the past year
 About once a week About once a season First time here

6. How would you rate this park overall on a scale of 1 to 10, with **1 being poor** and **10 being excellent?**

1	2	3	4	5	6	7	8	9	10
<i>Poor</i>									<i>Excellent</i>
▼	▼	▼	▼	▼	▼	▼	▼	▼	▼
<input type="checkbox"/>	<input type="checkbox"/>	<input type="checkbox"/>	<input type="checkbox"/>	<input type="checkbox"/>	<input type="checkbox"/>	<input type="checkbox"/>	<input type="checkbox"/>	<input type="checkbox"/>	<input type="checkbox"/>

WHY did you rate it that way?

7. What one improvement would make your visit to this park more enjoyable?

8. Which of the following do you consider acceptable uses of open space? (Check ALL that apply)

- Preserve views/natural beauty Trails and recreation Wildlife habitat & corridors
 Agriculture Urban buffers (between cities) Renewable energy (solar, wind)
 Conserve native ecosystems **Other:** please describe

9. Do you: (Check all that apply)

- currently own a dog or dogs?
 have a dog or dogs with you today?

OPEN ►

10. Thinking only of this park, how would you describe the number of trail miles here, on a scale of 1 to 5, with 1 being not enough and 5 being too many? (Check one)

1	2	3	4	5	
Not enough trails		About the right number of trails		Too many Trails	Not Sure
▼	▼	▼	▼	▼	▼
<input type="checkbox"/>	<input type="checkbox"/>	<input type="checkbox"/>	<input type="checkbox"/>	<input type="checkbox"/>	<input type="checkbox"/>

11. Sometimes, visitors interfere with one another's goals on the trail, causing unpleasant experiences. This is generally referred to as "conflict." Did you experience conflict at this park TODAY? (Check one)

- No: Skip Ahead to Question #12
 Not sure: Skip Ahead to Question #12
 Yes: **Which of these best describes that conflict?** (Check ONLY One)
- Biker/s Not Yielding Horse Droppings General discourtesy of others
 Dogs Off-Leash Dog Droppings Biker/s Speed
 Biker/s Communication Biker/s Disobeying Rules Other (**please describe**):
 Dog/s on-leash but not controlled

12. Have you experienced conflict at this park in the PAST YEAR? (Check one)

- No: Skip Ahead to Question #13
 Not sure: Skip Ahead to Question #13
 Yes: **Which of these best describes that conflict?** (Check ONLY One)
- Biker/s Not Yielding Horse Droppings General discourtesy of others
 Dog/s Off-Leash Dog Droppings Biker/s Speed
 Biker/s Communication Biker/s Disobeying Rules Can't remember right now
 Dog/s on-leash but not controlled Other (**please describe**):

13. Did you seek information about this park prior to your visit today? (Check one)

- No: Skip Ahead to Question #14
 Yes: **Where did you get that information?** (Check all that apply)
- Facebook Word of mouth Newspaper Saw sign on road
 Open Space Website Twitter Open Space brochure Guide book

14. Other than the surveyor, did you have contact with any other BCPOS employees or volunteers during your visit today?

- No: Would it have been beneficial to have contact with BCPOS staff or volunteers? Yes No
 Yes: How would you rate the customer service you received? (Check one)

1	2	3	4	5	Not Sure
Poor ▼	▼	Average ▼	▼	Excellent ▼	
<input type="checkbox"/>	<input type="checkbox"/>	<input type="checkbox"/>	<input type="checkbox"/>	<input type="checkbox"/>	

15. While visiting this park today, did you feel crowded?

1	2	3	4	5	Not Sure
Not at all Crowded ▼	▼	Somewhat Crowded ▼	▼	Very Crowded ▼	
<input type="checkbox"/>	<input type="checkbox"/>	<input type="checkbox"/>	<input type="checkbox"/>	<input type="checkbox"/>	

16. Thinking about all of your visits to this park only, please rate each of the following items on a scale of 1 to 5:

	1	2	3	4	5	Not Sure
	Too few ▼	▼	About Right ▼	▼	Too Many ▼	
The QUANTITY of: Signs with Directions.....	<input type="checkbox"/>	<input type="checkbox"/>	<input type="checkbox"/>	<input type="checkbox"/>	<input type="checkbox"/>	<input type="checkbox"/>
Signs with Rules.....	<input type="checkbox"/>	<input type="checkbox"/>	<input type="checkbox"/>	<input type="checkbox"/>	<input type="checkbox"/>	<input type="checkbox"/>
Benches and Picnic Tables...	<input type="checkbox"/>	<input type="checkbox"/>	<input type="checkbox"/>	<input type="checkbox"/>	<input type="checkbox"/>	<input type="checkbox"/>
	Not at all Satisfied ▼	▼	Somewhat Satisfied ▼	▼	Very Satisfied ▼	Not Sure ▼
How SATISFIED are you with the <u>design</u> of the trailhead? (traffic flow, restroom location, etc.)	<input type="checkbox"/>	<input type="checkbox"/>	<input type="checkbox"/>	<input type="checkbox"/>	<input type="checkbox"/>	<input type="checkbox"/>
Please explain why you answered that way:						
How SATISFIED are you with the <u>maintenance</u> of the trailhead? (trash removal, clean restrooms, etc.)	<input type="checkbox"/>	<input type="checkbox"/>	<input type="checkbox"/>	<input type="checkbox"/>	<input type="checkbox"/>	<input type="checkbox"/>
Please explain why you answered that way:						

17. Do the signs at this trailhead provide clear, useful information that you can understand? (Check one)

- ___ Yes, they were clear and helpful ___ Somewhat clear and helpful ___ Not at all clear or helpful
WHY did you answer that way?

18. Where is your home? (Check ONLY One)

- ___ Boulder ___ Gold Hill ___ Lyons ___ Unincorporated Boulder County
 ___ Broomfield ___ Lafayette ___ Nederland ___ Ward
 ___ Denver ___ Longmont ___ Niwot ___ Outside Colorado
 ___ Erie ___ Louisville ___ Superior ___ None of these, but in Colorado

19. IF YOU LIVE IN BOULDER COUNTY, how long have you lived here?

- ___ Less than 1 year ___ 5 – 9 years ___ 15 or more years
 ___ 1 – 4 years ___ 10 – 14 years ___ Do not live in Boulder County

20. Please check your gender:

Female Male

21. How would you describe your highest level of education?

Some high school or less Some college or technical school Masters/PhD degree
 High school diploma BA/BS degree

22. Which of the following best describes your race or ethnic heritage?

White/Caucasian Hispanic/Chicano Asian American African American
 None of these: *please describe*:

23. What was your income last year?

less than \$10,000 \$30,000-49,999 \$70,000-99,999 \$200,000 or more
 \$10,000-29,999 \$50,000-69,999 \$100,000-199,999

24. If there is anything else you would like to tell us, please continue writing on the back:

OVER ►

Appendix B

Top 5 “One Improvement” Comments

Location	Top 5 “One Improvement” Comments	# of Comments
Anne U. White Trail	Improved Parking	43
	Nothing/Perfect	17
	Remove Poison Ivy	12
	Longer/More Trail(s)	6
	Add Bathroom	5
Bald Mountain Scenic Area	Nothing/Perfect	20
	Better Signage	4
	More Benches	3
	Potable Water/Fountain	3
	Longer/More Trail(s)	3
Betasso Preserve	Longer/More Trail(s)	18
	Less/No Bikers	11
	More Pedestrian Only Days	8
	7 Days a Week Mountain Biking	8
	More Benches	4
Boulder Canyon Trail	More Trail/Parking Lot Maintenance	13
	Longer/More Trail(s)	9
	Potable Water/Fountain	8
	Nothing/Perfect	6
	Different Trails for Different Users	5
Caribou Ranch Open Space	Longer/More Trail(s)	16
	More Bathroom Maintenance	8
	Allow Dogs	5
	More Picnic Tables	5
	Go Inside Historic Buildings	3
Carolyn Holmberg Preserve	More Trees/Shade	9
	Longer/More Trail(s)	8
	More Fish	6
	More Trail Maintenance	5
	Potable Water/Fountain	4
Coal Creek Trail	Longer/More Trail(s)	12
	Add Bathroom	9
	More Benches	8
	More Dog Leash Enforcement	7
	Reduce Trail Flooding/Improve Drainage	7
	More Trail Maintenance	7
Fairgrounds Lake	Potable Water/Fountain	5
	More Trash Cans	5
	Bathrooms at Both Parking Lots	5
	More Trees/Shade	4
	More Plant/Weed Maintenance	4

Location	Top 5 “One Improvement” Comments	# of Comments
Hall Ranch	Potable Water/Fountain	11
	Add Bathroom/Bathroom Maintenance	5
	Allow Dogs	5
	Separate Less Technical Trail	4
	Less Rocks/Gravel	3
Hall Ranch Antelope Trail	Improved Parking	6
	Trail/Parking Lot Maintenance	5
	Longer/More Trail(s)	4
	Add Bathroom	3
	More Bike Trails	2
Heil Valley Ranch	Allow Dogs	7
	Potable Water/Fountain	7
	Less Rocks/Gravel	6
	Trail/Parking Lot Maintenance	4
	Longer/More Trail(s)	4
Heil Valley Ranch Picture Rock Trail	Longer/More Trail(s)	5
	Allow Dogs	5
	Fix Blind Corners	3
	Potable Water/Fountain	3
	Trail/Parking Lot Maintenance	2
	Covered Picnic Area/Picnic Tables	2
	More Plant/Weed Maintenance	2
Lagerman Reservoir	More Shade/Trees	21
	Better Access/Open West End All Year	6
	More Fish	4
	Allow Swimming	4
	Play Area For Kids	3
	More Trail Maintenance	3
Legion Park	More Trees/Shade	8
	Add Bathroom	7
	Road Maintenance	6
	More Picnic Tables	7
	Longer/More Trail(s)	2
	More Plant/Weed Maintenance	2
	Trash Removal	2

Location	Top 5 “One Improvement” Comments	# of Comments
Mud Lake	Longer/More Trail(s)	13
	More Picnic Tables	4
	Improve Signage/Maps	3
	Potable Water/Fountain	3
	No Bikes	2
	More Trees/Shade	2
	More Benches	2
	Allow Dogs Off-Leash	2
	Less Forest Thinning	2
	Allow Fishing	2
	Define Trails/Better Trail Marking	2
Niwt Loop Trail	Add Bathroom	8
	Potable Water/Fountain (With Dog Fountain)	7
	Improve Signage	3
	More Trees/Shade	3
	More Dog Leash Enforcement	3
	More Trail Maintenance	3
	Provide Dog Poop Bags	3
	Longer/More Trail(s)	3
Pella Crossing	More Trash Cans	15
	More Benches	10
	Better Fishing/More Fish	7
	Enforce Dog Regulation	4
	More Shade/Trees	4
Rabbit Mountain	More Trails	11
	Potable Water/Fountain	9
	Allow Dogs Off-Leash	6
	More Trees/Shade	5
	Bathroom Maintenance	4
	Horse Poop Removal	4
	Improved Signage	4
Twin Lakes	Add Bathroom	19
	More Trash Cans	11
	More Benches	10
	Ponds Full of Water Year Round	7
	Better Fencing (Remove Barbed Wire)	5
	Allow Dogs Off-Leash at Both Lakes	5

Location	Top 5 “One Improvement” Comments	# of Comments
Walden Ponds Wildlife Habitat	More Benches	5
	Add Bathroom/Better Bathroom Maintenance	5
	Reduce Airport Traffic Noise	5
	Plant/Weed Maintenance	4
	Keep Ponds Filled Year Round	4
Walker Ranch Loop Trail	Allow Bike Access from Eldorado Canyon	10
	Remove Steep Hills/Stairs	8
	More Trail Maintenance	4
	Potable Water/Fountain	4
	Add Bathrooms/Bathroom Maintenance	4
Walker Ranch Meyers Homestead Trail	Longer/More Trail(s)	9
	Add Bathroom	5
	More Benches	3
	Improve Signage	3
	More Trail Maintenance	3

Appendix C

Other Uses of Open Space

<i>Property</i>	<i>Other Uses of Open Space</i>
Anne U. White Trail	Creative use that preserves ecosystem intact and unharmed
Anne U. White Trail	Renewable energy very limited
Anne U. White Trail	Rock climbing
Anne U. White Trail	Some mining or other use if careful
Bald Mountain Scenic Area	Dog park
Bald Mountain Scenic Area	Ride my motorcycle
Betasso Preserve	Disc golf course
Betasso Preserve	Educational
Boulder Canyon Trail	Community garden
Boulder Canyon Trail	Solar energy depends on location
Caribou Ranch Open Space	Mountain biking
Caribou Ranch Open Space	Preserve history
Caribou Ranch Open Space	Shooting Venues
Carolyn Holmberg Preserve	Historic preservation
Carolyn Holmberg Preserve	Photo areas
Coal Creek Trail	Events and competitions to raise money
Coal Creek Trail	Mountain biking, dogs off leash
Coal Creek Trail	Protect water quality with riparian zones
Fairgrounds Lake	Historical
Fairgrounds Lake	Places to exercise
Fairgrounds Lake	Public events
Fairgrounds Lake	Renewable conditionally upon footprint issues
Fairgrounds Lake	Renewable some times and depends what
Fairgrounds Lake	Wind, not solar
Hall Ranch	Cultural
Hall Ranch	Preserve archaeological sites
Heil Valley Ranch	Historic preservation
Heil Valley Ranch	Mountain biking and dogs
Heil Valley Ranch	Small picnic area
Heil Valley Ranch Picture Rock Trail	Renewable only if doesn't spoil habitat
Lagerman Reservoir	Renewable energy only if minimal visual impact
Lagerman Reservoir	Swimming and target practice
Legion Park	Place of undisturbed quiet
Legion Park	Too much open space already

<i>Property</i>	<i>Other Uses of Open Space</i>
Mud Lake	OHV
Mud Lake	Renewable energy only if it was unobtrusive
Mud Lake	Some agriculture could be useful if it helps the other goals
Mud Lake	Target shooting
Niwot Loop Trail	Agriculture = community gardens
Niwot Loop Trail	Exercising with dogs
Niwot Loop Trail	Urban food supplies
Pella Crossing	Fishing, more stocking
Pella Crossing	Fishing/hiking/kayaking, etc.
Pella Crossing	Landscaped parklands
Pella Crossing	Swimming
Rabbit Mountain	Bow hunting
Rabbit Mountain	Dog friendly access
Rabbit Mountain	I believe open space should be available for use
Rabbit Mountain	Renewable energy - maybe
Twin Lakes	Limited renewable energy
Twin Lakes	Place to loaf w/ friends in the dead of night
Twin Lakes	Portable toilet
Walden Ponds Wildlife Habitat	Ag depends on location
Walden Ponds Wildlife Habitat	Birding
Walden Ponds Wildlife Habitat	Education
Walden Ponds Wildlife Habitat	Education
Walden Ponds Wildlife Habitat	Fishing
Walden Ponds Wildlife Habitat	Kid's play space
Walker Ranch Loop Trail	Camping
Walker Ranch Meyers Homestead Trail	Educational paths
Walker Ranch Meyers Homestead Trail	Renewable energy if not too disruptive to all the other stuff
Walker Ranch Meyers Homestead Trail	Science/study area
Walker Ranch Meyers Homestead Trail	Stop building houses

Appendix D Conflicts

<i>Property</i>	<i>Other Conflict Today</i>
Anne U. White Trail	Birders on trail not moving out of the way
Anne U. White Trail	People disliked my running
Betasso Preserve	Blind corner (startled hikers)
Betasso Preserve	Hikers not yielding
Boulder Canyon Trail	Dog owners using obscenities
Boulder Canyon Trail	Kids everywhere in both lanes
Boulder Canyon Trail	Runners taking entire path
Caribou Ranch Open Space	Guided groups not allowing others to pass, loud talking from guided groups
Caribou Ranch Open Space	Large group of runners
Caribou Ranch Open Space	Trail not wide enough for joggers
Coal Creek Trail	Pot smoking teenagers
Fairgrounds Lake	Litter
Mud Lake	Noisy visitors
Twin Lakes	Hot air balloons hovering over lake
Walden Ponds Wildlife Habitat	Bikers do not match the pace here – should not have access
Walden Ponds Wildlife Habitat	Overheating (lack of water)
Walker Ranch Meyers Homestead Trail	Hikers heading off into the closed trail at the homestead

<i>Property</i>	<i>Other Conflict Past Year</i>
Anne U. White Trail	People smoking
Anne U. White Trail	Bear here on Wednesday
Betasso Preserve	Hikers not yielding
Betasso Preserve	Hikers/runners telling me to ride somewhere else
Betasso Preserve	Rude hikers
Boulder Canyon Trail	Walkers abreast
Boulder Canyon Trail	Dog owners using obscenities
Boulder Canyon Trail	People camping, partying, unsafe feeling
Boulder Canyon Trail	Terrible sneer from a couple walking the trail
Boulder Canyon Trail	Traffic in tunnel + bike (me) in tunnel due to construction
Caribou Ranch Open Space	Guided groups not allowing others to pass, loud talking from guided groups
Carolyn Holmberg Preserve	Dogs aggressive
Carolyn Holmberg Preserve	Horse divots make it too rough for strollers and bikes
Carolyn Holmberg Preserve	People doing drugs in truck
Carolyn Holmberg Preserve	Problem when farmers' cattle are out 2-3 times per year
Coal Creek Trail	Drainage in tunnel – have to walk back up the hill to walk the road
Coal Creek Trail	Walkers not moving over
Coal Creek Trail	Motorized scooters
Coal Creek Trail	Pot smoking teenagers
Fairgrounds Lake	Broke front tooth due to dog off-leash cutting in front of my bike
Hall Ranch	Horses not staying on trail
Heil Valley Ranch	Horses

<i>Property</i>	<i>Other Conflict Past Year</i>
Heil Valley Ranch Picture Rock Trail	Hiker disappointment
Heil Valley Ranch Picture Rock Trail	Just too much traffic on Saturday morning, everyone was courteous
Heil Valley Ranch Picture Rock Trail	Too many bikes on narrow path
Lagerman Reservoir	I work til 6:30, paddle at 7 pm, rangers ticket me at 8:05 pm at dusk. I wish I didn't have a job and pay taxes but I do.
Legion Park	Loitering, loud music
Niwot Loop Trail	Horses
Niwot Loop Trail	Large running clubs take over the trails
Niwot Loop Trail	Running groups overcrowd the trail, they are also rude
Pella Crossing	A really b***** police woman
Pella Crossing	Can't remember right now
Pella Crossing	Dog owners bad attitude
Pella Crossing	Horses and their owners
Pella Crossing	Snakes
Rabbit Mountain	Bags of poop left on trail
Twin Lakes	Rude runners
Twin Lakes	Walkers who hated dogs
Walden Ponds Wildlife Habitat	Excessive over flight noise
Walden Ponds Wildlife Habitat	People shooting – might have been on neighboring property
Walker Ranch Loop Trail	Hikers being rude even when bikes slow down and say thank you

Appendix E

Top 5 “Design of Trailhead” Comments

Location	Top 5 “Why Rated Design of Park” Comments	Number of Comments
Anne U. White Trail	Needs More Parking	15
	Needs Bathroom	4
	Keep Undeveloped (No Restrooms)	3
	Aesthetic Beauty	3
	Narrow Trails	2
Bald Mountain Scenic Area	Small/Doesn’t Need Much	2
	Good/Great/No Problems	2
	Easy Picnic Spot	1
	More Port-A-Potties	1
	Good Trail Maintenance	1
	Didn’t Spend Time on Trail	1
Betasso Preserve	User Friendly	5
	Need More Direct Trail to Bathroom/Need Restroom at Trailhead	2
	Accessible/Convenient	2
	Enough/Good Amenities	2
	Good/Great/No Problems	2
Boulder Canyon Trail	Improve Amenities (Restroom, Water, Etc)	5
	User Friendly	4
	Good/Great/No Problems	2
	Good Amenities	2
	Loose Gravel	1
	Not Crowded	1
Caribou Ranch Open Space	Good/Great/No Problems	13
	Good Amenities (Parking, Restrooms, Picnic Tables, Signs)	5
	User Friendly	3
	Convenient/Accessible	2
	Need Restroom on Trail	1
	More Parking	1
Carolyn Holmberg Preserve	Convenient/Accessible	4
	Good/Great/No Problems	2
	Liked the Flow/Layout	2
	Needs More Amenities (Shade, Facilities)	1
	Remind Smokers to Remove Butts	1
	There is No Riffraff	1
	Spacious	1
	Good Amenities (Restroom)	1

Location	Top 5 “Why Rated Design of Park” Comments	Number of Comments
Coal Creek Trail	Needs More Amenities (Bathroom, Parking, Picnic Table, Rest Stops)	9
	Good/Great/No Problems	7
	Convenient/Accessible	6
	Not Crowded	2
	Needs Trail Cutting through Uphill Detour	1
	East Trailhead Missing	1
	Liked the Flow/Layout	1
	More Shade	1
	Develop Fishing	1
Fairgrounds Lake	Good/Great/No Problems	3
	Liked the Flow/Layout	3
	More Amenities (Dog Water Bowls, Bathrooms)	2
	Bathrooms Dirty	1
	Convenient/Accessible	1
	Use Sandstone and Pavement	1
	Clean/Well Maintained	1
Hall Ranch	Good Amenities (Parking, Signs, Bathroom, Trailer parking)	5
	Accessible/Convenient	3
	Liked the Flow/Layout	3
	Clean/Well Maintained	2
	Good/Great/No Problems	2
Hall Ranch Antelope	Need More Amenities (Bathroom)	7
	Good Size/Small	2
	Well Maintained/Clean	1
	No Shade	1
Heil Valley Ranch	Good Amenities (Parking, Trailer Parking, Bathrooms, Picnic Tables)	6
	Aesthetic Beauty	3
	No Problems	2
	Bathroom Inconvenient	1
	Convenient/Accessible	1
Heil Valley Ranch Picture Rock	Blind/Narrow Spots on Trail	2
	Good Amenities (Bathrooms, Signs)	2
	Good Single Track	1
	Good Amenities (Parking)	1
	New to Trail	1
	Good/Great/No Problems	1
	Accessible/Convenient	1

Location	Top 5 “Why Rated Design of Park” Comments	Number of Comments
Lagerman Reservoir	Good/Great/No Problems	5
	Well Designed	2
	Accessible/Convenient	2
	Year Round Access to Trail around Reservoir	2
	Good Amenities (Restroom)	2
Legion Park	Needs More Amenities (Bathroom, Trail, Trailhead)	5
	Fix Road (Potholes)	3
	Not Easy to Find	2
	Plant More Trees	1
	Don’t Use Everything	1
	Aesthetic Beauty	1
Mud Lake	Accessible/Convenient	4
	Good Amenities (Restroom, Parking, Signs, Trailer Parking)	2
	More Shade	1
	Works for this Location	1
	Clean/Well Maintained	1
	Wild Bear Area Confusing	1
	Not Crowded	1
Niwot Monarch Loop	Needs More Amenities (Bathroom, Water Fountain)	8
	Good/Great/No Problems	2
	Aesthetic Beauty	1
Pella Crossing	Good Amenities (Parking, Signs)	6
	Accessible/Convenient	6
	Like the Flow/Layout	4
	Needs More Amenities (Map, another Restroom, Bridge across Ditch)	3
	Like How Trails Are Loops	1
	Not Crowded	1
	Aesthetic Beauty	1
Rabbit Mountain	Good Amenities (Facilities, Restroom, Signs)	5
	No Problems	4
	Like the Flow/Layout	3
	Not Crowded	2
	Clean/Well Maintained	2
	Needs More Amenities (Water Fountain)	2

Location	Top 5 “Why Rated Design of Park” Comments	Number of Comments
Twin Lakes	Needs More Amenities (Restrooms, Tables)	4
	Didn’t Start at Trailhead	2
	Good/Great/No Problems	2
	Trails Around Lakes Well Maintained	2
	Need Southern Bridge Near Green Gate	1
	Not Too Crowded	1
	Accessible/Convenient	1
	Good Use of Small Space	1
Walden Ponds	Needs More Amenities (Benches in Shade, Boat Launches, Another Restroom, Restroom Closer to Parking Lot, Regulatory Signs)	5
	Good Amenities (map, signs, parking)	3
	Good/Great	2
	Clean/Well Maintained	2
	Accessible/Convenient	1
	Enjoy Boardwalk	1
Walker Ranch Loop	Good Amenities (Restroom, Parking, Signs)	8
	Like the Flow/Layout	3
	Great Loop/Trail	3
	Good/Great/No Problems	2
	Aesthetic Beauty	1
Walker Ranch Meyers	Needs More Amenities (Restroom, Map of Walker Loop at Meyers, More Parking, Water, Picnic Tables)	6
	Good Amenities (Map, Parking Lot, Signs)	4
	Accessible/Convenient	1
	Great/Good/No Problem	1
	Bikes Need Trails, Not Trailheads	1

Appendix F

Top 5 “Maintenance of Trailhead” Comments

Location	Top 5 “Why Rated Maintenance of Park” Comments	Number of Comments
Anne U. White Trail	Clean/Well Maintained	2
	Needs More Amenities (Parking, Bathrooms)	2
	Good/Great/No Problems	2
	Keep it Small	1
	Poison Ivy Management	1
	Dog Poop Bags and Trash	1
	Aware of No Maintenance	1
	People Respectful	1
Bald Mountain Scenic Area	Good/Great/No Problems	4
	Clean/Well Maintained	3
	Aesthetic Beauty	1
Betasso Preserve	Clean/Well Maintained	14
	Good/Great/No Problems	4
	Needs More Regular Cleaning/Dirty	3
	Dead Trees on Trails	2
	Trail Too Wide/Not Well Maintained	2
Boulder Canyon Trail	Clean/Well Maintained	14
	Sand/Loose Gravel	3
	Good/Great/No Problems	3
	Needs More Snow Removal	2
	Too Many Signs	1
	Too Much Asphalt	1
	Dirty/Needs More Regular Cleaning	1
	Wide Enough	1
	Bathroom Stinky	1
Good Amenities (Restroom)	1	
Caribou Ranch Open Space	Bathroom Stinky	6
	Clean/Well Maintained	6
	Good/Great/No Problems	2
	Crowded	1
	Lady Who Cleaned Toilets Drove Too Fast	1
	Needs More Amenities (Shaded Picnic Tables)	1
Carolyn Holmberg Preserve	Clean/Well Maintained	10
	More Trash Removal	4
	Good/Great/No Problems	3
	Path Floods/Water on Trail	2
	No Trash	2

Location	Top 5 “Why Rated Maintenance of Park” Comments	Number of Comments
Coal Creek Trail	Needs Better Trail Maintenance (Sand Fill In, Overhanging Tree Removal, Erosion Control)	5
	Clean/Well Maintained	4
	Good/Great/No Problems	4
	More Frequent Trash Removal/Cleaning	3
	Better Drainage	2
	Needs More Amenities (Bathrooms)	2
Fairgrounds Lake	Clean/Well Maintained	9
	More Frequent Trash Removal/Cleaning	3
	Water Fountain Not Working	1
	Needs Plant/Weed Maintenance	1
	Dog Droppings	1
	Good/Great/No Problems	1
	Bathroom Stinky	1
	More Trail Maintenance	1
Hall Ranch	Clean/Well Maintained	7
	Good/Great/No Problems	5
	Bathroom Stinky	3
	Gravel on Trail	1
	Restrooms Closed, Outhouse Available	1
	Horse Droppings	1
	More Frequent Trash Removal/Cleaning	1
Hall Ranch Antelope	Clean/Well Maintained	3
	Needs More Amenities (Bathroom)	2
	No Trash	1
	More Trail Maintenance	1
Heil Valley Ranch	Clean/Well Maintained	4
	Good/Great/No Problems	1
	No Trash	1
	More Frequent Trash Removal/Cleaning	1
	Restrooms Accessible	1
Heil Valley Ranch Picture Rock	Clean/Well Maintained	5
	Good/Great/No Problems	2
	Lots of Thistles	1
	No Trash	1
	Needs Potable Water/Fountain	1

Location	Top 5 “Why Rated Maintenance of Park” Comments	Number of Comments
Lagerman Reservoir	Well Maintained/Clean	10
	Good/Great/No Problems	4
	No Trash	1
	Personal Affinity (e.g. I Like It)	1
	More Frequent Trash Removal/Cleaning	1
	Weed Removal	1
Legion Park	Good/Great/No Problems	3
	More Frequent Trash Removal/Cleaning	3
	Needs Weed Removal	2
	Well Maintained/Clean	2
Mud Lake	Well Maintained/Clean	7
	Good/Great/No Problems	3
	No Trash	2
Niwot Monarch Loop	Needs More Amenities (Trash Cans, Restrooms)	4
	Well Maintained/Clean	3
	No Trash	1
	Recycle Bins Get A lot of Trash	1
Pella Crossing	Well Maintained/Clean	10
	More Frequent Trash Removal/Cleaning	4
	Horse/Dog Droppings	2
	Good/Great/No Problems	2
	No Trash	2
Rabbit Mountain	Well Maintained/Clean	7
	Bathroom Stinky/Dirty	5
	Good/Great/No Problems	4
	More Frequent Trash Removal/Cleaning	3
	Good Amenities (Parking)	1
	Irrigation Improved From Last Year	1
	Personal Affinity (e.g. I Like It)	1
	No Trash	1
	Parking Spaces Not Close to Each Other	1
	Dog Poop Bags	1
	A Little Clearer from Horses	1

Location	Top 5 “Why Rated Maintenance of Park” Comments	Number of Comments
Twin Lakes	Well Maintained/Clean	5
	Needs More Amenities (Restroom)	4
	More Frequent Trash Removal/Cleaning	3
	Nice Gravel	1
	Accessible for Elderly/Bikes	1
	Liked it Better When it Was Less “Touched” by City	1
	Cement Blocks Visible	1
	Plant/Weed Maintenance	1
	No Trash	1
	Dog Poop	1
Walden Ponds	Well Maintained/Clean	5
	More Frequent Trash Removal/Cleaning	3
	Good/Great/No Problems	3
	No Sanitizer in Restroom	1
	Trails Well Maintained	1
	No Trash	1
	Needs Road Maintenance	1
	More Trail Maintenance	1
	More Weed Removal	1
Walker Ranch Loop	Well Maintained/Clean	7
	Good/Great/No Problems	5
	No Toilet Paper	3
	Good Road Maintenance	2
	Enjoy Free Leashes	1
	No Trash	1
	More than Enough Amenities, We Could Spend Less Money on Them	1
	Enjoy Hand Sanitizer	1
	More Frequent Trash Removal/Cleaning	1
Walker Ranch Meyers	Well Maintained/Clean	7
	Good/Great/No Problems	5
	More Road Maintenance	2
	No Trash	1
	More Frequent Trash Removal/Cleaning	1

Appendix G

Top 5 “Sign Usefulness” Comments

Location	Top 5 “Sign Usefulness” Comments	Number of Comments
Anne U. White Trail	Needs Trail Map/Trail Mileage Information	5
	Adequate Number of Signs	5
	Clear/No Questions	4
	Did Not See Signs	3
	Easy to Navigate	2
Bald Mountain Scenic Area	Needs Trail Map/Trail Mileage Information	4
	Clear/No Questions	3
	Dogs On-Leash	1
	More Regulatory Signs	1
	Mountain Lion Sign Helpful	1
Betasso Preserve	Clear/No Questions	11
	Like Bike Directional Signs	6
	Didn’t Read Them	2
	Need Trail Mileage Markers	2
	Good Information	2
Boulder Canyon Trail	Adequate/Clear/Easy To Spot	7
	Did Not Read Them	5
	Need More Signs	3
	Enjoy Historical Information	2
	Need Trail Mileage Markers	2
	Too Many Signs	2
Caribou Ranch Open Space	Information Clear/Concise	6
	Enjoy Historical Information	3
	Need More Signs/Signs Not Well Posted	3
	Exceptional/Good Signs	2
	Good Trail Map/Trail Markers	2
Carolyn Holmberg Preserve	Adequate Signage/Clear/Easy to Read	7
	Not Clear How to Get to Various Destinations	3
	Did Not Read Them	2
	Good Trail Map/Trail Distance Information	2
	Information about Fishing	1
	There is English and Spanish Signage	1
Coal Creek Trail	Good Signage/Map	5
	Easy to Understand/Clear	4
	Did Not Read Them	4
	Did Not See Signs	4
	Map of Trail and Connections May Help	3
	Hard to Find	2

Location	Top 5 “Sign Usefulness” Comments	Number of Comments
Fairgrounds Lake	Clear/Easy/Useful	7
	Did Not Read Signs	6
	Did Not See Signs	1
	Regulations Unclear	1
	Needs Trail Mileage Markers	1
	Needs More Instruction Signs	1
Hall Ranch	Clear/Useful/No Questions	6
	Knew Where to Go/Did Not Get Lost	3
	Good Trail Map	2
	Because it’s overdone	1
	Need More Signs	1
	Sometimes confusing/Hard to decipher	1
Hall Ranch Antelope	Did Not Get Lost	3
	Clear/Useful/No Questions	2
	Need More Information (Trail Mileage, Difficulty)	2
	Trail Condition Sign Helpful	1
	Map Helpful	1
	Brochures	1
Heil Valley Ranch	Clear/Useful/No Questions	5
	Good Trail Map/Trail Mileage	5
	Easy to Understand	2
	Well Marked/Maintained Trail	2
	Need More Signs at Intersections	1
	Well Located Signs	1
	Did Not Use Them	1
Heil Valley Ranch Picture Rock Trail	Clear/Useful/No Questions	3
	Enjoy Trail Mileage Info/Trail Map	2
	Need More Signs at Intersections	1
	Don’t Need Many Trail Signs	1
	Did Not Use Them	1
	Signs Need to Be Better Labeled	1
	Reorient the Map in Relation to Trailhead	1
Lagerman Reservoir	Clear/Useful/No Questions	7
	Did Not Use Them	4
	Do Not Use the Trails	2
	Never Sure About Seasonal Closure	1
	Orient Map Relative to Lake	1
	No Signs If Travel Counter Clockwise	1
	Mixed-Use Trail Sign Rather Than “Biking Allowed” Sign	1

Location	Top 5 “Sign Usefulness” Comments	Number of Comments
Legion Park	Did Not See Any Signs	4
	Did Not Use Them	3
	Not Many Signs	2
	Succinct Without Being Overbearing	1
	Do Not Get Lost	1
	No Trail	1
Mud Lake	Easy to Understand/Clear	6
	Did Not Get Lost	3
	Blue Diamonds Helpful	3
	Good Trail Map/Trail Distance Information	3
	Easy to Get Lost	2
Niwot Loop Trail	Useful/Clear/Helpful	4
	Needs Trail Mileage Markers	4
	Needs Maps	4
	Needs More Information About Connecting Trails	1
	Dislike Signs	1
	Got Lost	1
	Did Not See Any Signs	1
	Did Not Get Lost	1
Pella Crossing	Clear/Concise/Helpful	10
	Need Trail Mileage Information	3
	Good Trail Map/Trail Marking	2
	Did Not Get Lost	1
	Did Not See Any Signs	1
	Did Not Read Them	1
Rabbit Mountain	Useful/Clear/Helpful	19
	Good Trail Map/Kiosk	4
	Not Enough Signage (Clarify Which Trail Is Loop, Which Is Out and Back)	4
	Got Lost	3
	Good Trail Condition Information	1
	Need More Regulation Information	1

Location	Top 5 “Sign Usefulness” Comments	Number of Comments
Twin Lakes	Useful/Clear/Helpful	9
	Did Not Use Them	4
	Need Trail Mileage Information	2
	Need more Regulation Signs (Dogs Off-Leash)	2
	Re-Orient to the Position of Lakes	1
	Did Not See Any Signs	1
Walden Ponds	Useful/Clear/Helpful	14
	Could Not Determine Different Ponds/ Trouble Reading Maps	3
	No Equestrian Information	2
	Enjoy Nature/Wildlife Signs	2
	Enjoy Brochures/Bird Lists	1
	Did Not See Any Signs	1
	Need More Signs	1
	Pond Fishing Rules Unclear	1
	Signs Need To Be More Visible	1
	Do Not Read Signs	1
	Need Trail Mileage Information	1
	Walker Ranch Loop	Clear/Useful/No Questions
Did Not Get Lost		5
Good Map and Mileage Markers		4
Did Not Read Them		3
More Than Enough Signs		1
Need “U R here”		1
More Signs to Get to Trailhead		1
Clear Mileage		1
Enjoy History Information		1
Walker Ranch Meyers	Clear/Useful/No Questions	12
	Enjoy the History/Environmental Interpretive Signs	3
	Good Signs	1
	Did Not Read Them	1
	Add Trail Mileage Markers	1
	Trail Not Clearly Marked	1
	Could Use More Information	1

Appendix H

“Anything Else” Positive Comments

<i>Property</i>	<i>Positive Comments*</i>
Anne U. White Trail	A gem!
Anne U. White Trail	Beautiful trail.
Anne U. White Trail	Great trail for hikers, families, dogs. Don't change anything! Keep parking a challenge, it helps control numbers, otherwise it will be overrun. We knew Anne White, this is her legacy. Thank you.
Anne U. White Trail	I know Boulder County gets pressure (from my community and others) to mitigate for fire on AUW, but I understand their hesitation to do so, when Gilbert and Anne (I assume) donated the land as a preserve. Thank you for this wonderful trail.
Anne U. White Trail	Love the Boulder County Youth Corps - great opportunity for kids. Thanks.
Anne U. White Trail	Love the stone bench.
Anne U. White Trail	Thank you!
Anne U. White Trail	My neighbors and I love this treasure of a trail with all our hearts.
Bald Mountain Scenic Area	Impressed with cleanliness and views. Thanks.
Bald Mountain Scenic Area	Saw a brown bear here on Wednesday 9:30 a.m. 6/16.
Bald Mountain Scenic Area	Thank you!
Bald Mountain Scenic Area	We had a nice visit.
Bald Mountain Scenic Area	We're so glad we decided to stop and hike here. It was wonderful.
Betasso Preserve	(Happy face)
Betasso Preserve	Bikers can be nice, peaceful, and courteous. They could teach/instruct others to do the same.
Betasso Preserve	Boulder Open Space is great. Overall with the growing population Boulder has done a good job trying to balance the needs of the community.
Betasso Preserve	Great idea to have 2 days w/o bikes and all dogs on leash.
Betasso Preserve	Great trail.
Betasso Preserve	Great trail.
Betasso Preserve	Great work. Thank you.
Betasso Preserve	How grateful I am for all you do to maintain/preserve our natural beauty.
Betasso Preserve	Also, I want to say that I love mountain biking myself and believe that there are already plenty of miles in Boulder County that are available. Thank you!
Betasso Preserve	I love the no bike days at Betasso.
Betasso Preserve	I love this trail!
Betasso Preserve	It's all good!
Betasso Preserve	Liked the idea of dog leashes, nice deer!
Betasso Preserve	Nice trails.
Betasso Preserve	Normally I ride to get here. Today is one of the few days I drove. Dogs are OK here. Some of the parks closer to Boulder seem to have problems with uncontrolled, off-leash dogs.

* **Bold Comments** indicate comments that fit into both the positive and suggestive comment categories, and were split into two comments as such.

<i>Property</i>	<i>Positive Comments*</i>
Betasso Preserve	Thank you and keep up the good work. I very much appreciate it!
Betasso Preserve	Thank you for a clean, beautiful and enjoyable hike.
Betasso Preserve	Thank you for keeping this park beautiful.
Betasso Preserve	Thank you!
Betasso Preserve	The Betasso family would be proud of how the family property has been preserved and maintained as an open space park.
Betasso Preserve	We really enjoy this park for our large family outings.
Boulder Canyon Trail	Am a visitor from Winter Springs, Florida so answers are not real accurate. My grandson is entering Boulder College as a grad student in geophysics and family is here getting him settled in his apartment and taking in the mountain sights today. Absolutely beautiful. Thank you.
Boulder Canyon Trail	Great park!
Boulder Canyon Trail	I really enjoy the park and amenities.
Boulder Canyon Trail	I rode this route up Sunshine to Bald Mtn., down to Poorman Rd. to 4-Mile and down to Boulder Creek Path today for 2 reasons: check out the high runoff and exercise. It couldn't have been more perfect!!
Boulder Canyon Trail	No - thanks.
Boulder Canyon Trail	On trails I saw a fox today!
Boulder Canyon Trail	Overall very happy.
Boulder Canyon Trail	Thank you for an excellent trail system.
Boulder Canyon Trail	Thanks!
Boulder Canyon Trail	This really is a great park that is well connected with other parks. I mean I can start from Elmer's two mile in North Boulder and make it to here without auto traffic signals to interfere. Thanks for the enjoyment.
Boulder Canyon Trail	Very happy w/ Parks & Open Space / Great Job.
Boulder Canyon Trail	We love it!
Caribou Ranch Open Space	Absolutely love the open spaces.
Caribou Ranch Open Space	Very nice.
Caribou Ranch Open Space	I was here today as a BCPOS volunteer (park patroller).
Caribou Ranch Open Space	Keep doing the guided hikes!
Caribou Ranch Open Space	Keep the dogs out.
Caribou Ranch Open Space	Keep up the good work.
Caribou Ranch Open Space	Open Space is a wonderful program. Thanks for all the work and incredible foresight to protect places along Front Range.
Caribou Ranch Open Space	Own land in Boulder County - happy to see my taxes used for this. No dogs a plus.
Caribou Ranch Open Space	Thanks for having so many great open spaces, parks and trails. We love using them.
Caribou Ranch Open Space	The people are very friendly!
Caribou Ranch Open Space	We love this park. Only downside is we can't bring our dog, but we are not wanting dogs to be allowed. Thank you. We love Boulder County OS.
Carolyn Holmberg Preserve	Boulder County does a fabulous job with open space and it is one of the reasons that I live here. Thank you!!

* **Bold Comments** indicate comments that fit into both the positive and suggestive comment categories, and were split into two comments as such.

<i>Property</i>	<i>Positive Comments*</i>
Carolyn Holmberg Preserve	I love riding my horse here. Thank you so much for keeping it open to horseback riders!
Carolyn Holmberg Preserve	I'm the volunteer that keeps the trail clean!
Carolyn Holmberg Preserve	Nice trail.
Carolyn Holmberg Preserve	Thank you very much for connecting this trail to Lafayette and under 287!
Carolyn Holmberg Preserve	Thanks for a great ride!
Carolyn Holmberg Preserve	We'll be back to fish and bike!
Carolyn Holmberg Preserve	What a wonderful surprise - I've never known this was here! Absolutely beautiful space - I will be back.
Coal Creek Trail	Great park
Coal Creek Trail	Great trails - love this park.
Coal Creek Trail	Keep the prairie dogs!
Coal Creek Trail	Keep this trail quiet.
Coal Creek Trail	Keep up the good work, love enjoying the trails, keeps me wanting to continue living here and coming back to the trails.
Coal Creek Trail	Nice park and trail.
Coal Creek Trail	One of the best even if not the closest central location.
Coal Creek Trail	Thanks for doing this survey. Will you post the results?
Coal Creek Trail	The more trails the better!
Coal Creek Trail	This park is a highlight of my life here. I use it often in every season.
Coal Creek Trail	We enjoy the parks and trails.
Fairgrounds Lake	Basically it's a wonderful trail. Are there plans to connect with Pella Crossing?
Fairgrounds Lake	Great trail from Golden Pond to Sandstone
Fairgrounds Lake	I like what Longmont and Boulder County are doing with respect to Open Space, Parks and River or Pond area green belts. Please keep up the good work!
Fairgrounds Lake	It's our favorite place to walk!!
Fairgrounds Lake	This park is a perfect mix of wild and manicured trails. Love it!
Fairgrounds Lake	Very nice park.
Hall Ranch	Francesca was very nice and courteous.
Hall Ranch	Great place! Thanks for taking such good care of it.
Hall Ranch	Keep up the good work! I love the trails!!
Hall Ranch	Love the trails systems. Thanks so much for all the work.
Hall Ranch	Thank you!
Hall Ranch	Thank you.

* **Bold Comments** indicate comments that fit into both the positive and suggestive comment categories, and were split into two comments as such.

<i>Property</i>	<i>Positive Comments*</i>
Hall Ranch	Thanks!
Hall Ranch	Thrilled about the idea of multi-use areas. Interestingly, all pedestrians stopped for me (on bike). I stopped, and had to insist they go on. I hope they don't feel put off by bikers (not all of whom stop though peds have priority). Great trail - mix of technical, climbing, single trail downs.
Hall Ranch	We all share the trail and everyone is so nice to me and polite about moving bikers and I get along good, I just hop to the side and they pass and are nice to me about it and say thanks. Call me if there are parkhost or volunteer opportunities.
Hall Ranch	Yeah Boulder Open Space! Yeah Bike Patrol!
Hall Ranch	I appreciate the horse and pedestrian only trail as many of them don't like mtn. bikers. That way they can avoid us if they wish.
Hall Ranch	I bike it and try to be as polite and conciliatory as possible.
Hall Ranch	Please keep all trails open.
Heil Valley Ranch	Great trail - great experience.
Heil Valley Ranch	I am a member of IMBA and BMA. I really appreciate how much the County has done to work with these orgs and create some trails for mountain bikers. Next time I will ride from town... Great job!
Heil Valley Ranch	I think Boulder County does an awesome job with trails and open space. Very progressive and a wonderful place to live with so many great places outdoors to visit. I appreciate being asked for my opinion. Thanks for doing a great job!
Heil Valley Ranch	Keep up the good work. Improves the quality of life for all of us. Thanks!
Heil Valley Ranch	Love Boulder's commitment to open space.
Heil Valley Ranch	Awesome day. Awesome trail.
Heil Valley Ranch	Shazam!
Heil Valley Ranch	Thanks for a great park!
Heil Valley Ranch	Thanks for caring.
Heil Valley Ranch	Thanks to Kevin Grady, caretaker for Heil Ranch. Great place!
Heil Valley Ranch Picture Rock Trail	Great job, beautiful trail!
Heil Valley Ranch Picture Rock Trail	Great trail.
Heil Valley Ranch Picture Rock Trail	Love this trail.
Heil Valley Ranch Picture Rock Trail	More bike trails. Great job! We appreciate the parks and open space.
Heil Valley Ranch Picture Rock Trail	Thank you for doing such a good job!!!
Heil Valley Ranch Picture Rock Trail	Thanks for asking our input.
Heil Valley Ranch Picture Rock Trail	Thanks for the trail.
Heil Valley Ranch Picture Rock Trail	The trailhead is gorgeous. Thanks for all the hard work!
Heil Valley Ranch Picture Rock Trail	This is a great trail!
Heil Valley Ranch Picture Rock Trail	Today I happened to drive here but I almost always run here. Thank you. Feel safer when others are on trail.

* **Bold Comments** indicate comments that fit into both the positive and suggestive comment categories, and were split into two comments as such.

<i>Property</i>	<i>Positive Comments*</i>
Lagerman Reservoir	Great place.
Lagerman Reservoir	I enjoyed it here - clean.
Lagerman Reservoir	I relocated to Boulder from Tennessee a year and a half ago. We are still finding new lakes and love it!
Lagerman Reservoir	It's nice.
Lagerman Reservoir	Keep up the great work at this park. Thanks!
Lagerman Reservoir	Of all the parks I have been to, this one is the quietest and most peaceful for being so close to Boulder. Thanks for it.
Lagerman Reservoir	Thank you for your concern regarding park visitors input.
Lagerman Reservoir	The volunteer (Pat) was very nice.
Lagerman Reservoir	We enjoy our car picnics and appreciate the clean park, thank you.
Legion Park	Donnie Shelton is a helpful, knowledgeable and very pleasant and helpful person, she should be in a full time position with you.
Legion Park	Thanks for Boulder County's commitment to open space.
Legion Park	The mirror in driveway was a big help for traffic coming up or down.
Mud Lake	Appreciated the fact that this was free.
Mud Lake	Fun time in your park - coming again.
Mud Lake	Gem of a park. We come here often. Keep it up!
Mud Lake	Girls loved lake, rocks in it and the log in water (according to 4 yr. old).
Mud Lake	I appreciated this park for what it was, easy strolls through forest and wildlife viewing on the lake. I came for an easy relaxing walk and that's what I got. I love the birds on the lake and the wildflowers on the trail.
Mud Lake	I love the quality of Boulder County open spaces and you do a great job of meeting audiences' needs/interest w/allowing dogs yet preserving habitat!
Mud Lake	Keep up the good work. I love living in Boulder County and glad to see my tax dollars at work enabling us to use these magnificent areas.
Mud Lake	Thank you.
Mud Lake	We love the Nature Detective Club.
Niwot Loop Trail	Great open space, keep up the good work!
Niwot Loop Trail	I absolutely love being able to bring the dog and appreciate others bringing dogs.
Niwot Loop Trail	I appreciate all that Boulder County does to establish and maintain open space and trails. Thank you!
Niwot Loop Trail	I love Boulder.
Niwot Loop Trail	Love it!
Niwot Loop Trail	Nope! Great place! Thanks!
Niwot Loop Trail	Thank you!
Niwot Loop Trail	Thank you!
Niwot Loop Trail	We're very pleased! Thanks.
Pella Crossing	Keep up the good work and keep patrolling the park regularly.
Pella Crossing	Keep up the great work.
Pella Crossing	Love it as is - do not change it.

* **Bold Comments** indicate comments that fit into both the positive and suggestive comment categories, and were split into two comments as such.

<i>Property</i>	<i>Positive Comments*</i>
Pella Crossing	Please keep up the great maintenance on this very enjoyable trail.
Pella Crossing	Thank you for opportunities like this park.
Pella Crossing	There is a huge variety of terrain at this park which makes it very enjoyable.
Rabbit Mountain	Great as-is.
Rabbit Mountain	Great use of open space!
Rabbit Mountain	I feel safe by myself which is the only one I do.
Rabbit Mountain	I think Rabbit Mtn. Is great!
Rabbit Mountain	I think the park system in Boulder County is outstanding.
Rabbit Mountain	Just thanks!
Rabbit Mountain	Keep up the good work!
Rabbit Mountain	Love that we can run with our dogs here.
Rabbit Mountain	Thank you!
Rabbit Mountain	This is a great park.
Twin Lakes	I am glad my roommates and myself found this area to walk my dog - the lack of sidewalks in this area left us feeling trapped in the apartment complex.
Twin Lakes	I like dogs although I don't have any dogs. I think most of the dog owners here are fairly responsible.
Twin Lakes	Thank you - I deeply appreciate this amazing and beautiful space.
Twin Lakes	Thanks!
Twin Lakes	This park has evolved nicely.
Twin Lakes	We like seeing the birds, ducks, and turtles here!
Walden Ponds Wildlife Habitat	Again, it's a beautiful area. We'll return.
Walden Ponds Wildlife Habitat	Cool place. I use it a lot.
Walden Ponds Wildlife Habitat	Fewer dogs = good!
Walden Ponds Wildlife Habitat	I particularly love the cottonwood groves and the beautiful native cottonwoods that are scattered around the park.
Walden Ponds Wildlife Habitat	Keep flying.
Walden Ponds Wildlife Habitat	Loved the trail.
Walden Ponds Wildlife Habitat	No. It's a very nice place to walk around.
Walden Ponds Wildlife Habitat	One of my favorite places!
Walden Ponds Wildlife Habitat	Thanks for finally paving the entrance.
Walden Ponds Wildlife Habitat	The park is just about perfect the way it is. I would recommend no changes.
Walden Ponds Wildlife Habitat	We came several years to the fishing ponds with our son but didn't realize how much is here. This spring we came down for a picnic while I was recovering from a chemo session. It was very accessible and we had a great view. Now that I am feeling better, I plan to bring my bike.
Walker Ranch Loop Trail	Bikers were very friendly.
Walker Ranch Loop Trail	Fantastic park! Don't change a thing.
Walker Ranch Loop Trail	I love this park - amazing place!
Walker Ranch Loop Trail	It was another great ride in Colorado. Wow!

* **Bold Comments** indicate comments that fit into both the positive and suggestive comment categories, and were split into two comments as such.

<i>Property</i>	<i>Positive Comments*</i>
Walker Ranch Loop Trail	It's nice to see the expansion of mountain bike trails in the area. There's a huge appreciative cycling community here! Thanks!
Walker Ranch Loop Trail	Keep up the good work!
Walker Ranch Loop Trail	Thank you!
Walker Ranch Loop Trail	Thank you!
Walker Ranch Loop Trail	Thanks for all your work!
Walker Ranch Meyers Homestead Trail	Great area.
Walker Ranch Meyers Homestead Trail	Great find - we'll be back!
Walker Ranch Meyers Homestead Trail	Great trail for 10-15 years now.
Walker Ranch Meyers Homestead Trail	I love the trails.
Walker Ranch Meyers Homestead Trail	One of my favorite trail runs, good view reward at end, challenging, variety of flora aspen/pine.
Walker Ranch Meyers Homestead Trail	Thank you!!
Walker Ranch Meyers Homestead Trail	Thanks!

* **Bold Comments** indicate comments that fit into both the positive and suggestive comment categories, and were split into two comments as such.

Appendix I

“Anything Else” Suggestive Comments

<i>Property</i>	<i>Suggestive Comments*</i>
Anne U. White Trail	Would love to see it continued to maintain/signage, etc.
Anne U. White Trail	One or two more [stone benches] would be great. Fewer dandelions and more wildflowers please! Add the loop again - it would be nicer.
Anne U. White Trail	Manage poison ivy!
Anne U. White Trail	Need for more parking.
Anne U. White Trail	No parking signs along Pinto Road seem hostile.
Anne U. White Trail	Please keep parking limited, more people on this trail would make it less appealing.
Anne U. White Trail	Please spray for poison ivy all over.
Anne U. White Trail	Protect nature and our natural ecosystems. Stop raping nature for profit and greed. Educate the public about the big picture and why it is important to respect and protect nature. Visit www.goodplanet.org . I just found it last week and suggest you watch the movie "Home". Look very deeply and try to be a part of the solution rather than a part of the problem. Think about the 6.5 billion other humans we share life with as well as all of Life. More love and respect and stop the greed and ignorance.
Anne U. White Trail	See my note on making a circular route, returning along north side of valley.
Anne U. White Trail	Recently we've seen such an increase in use (and abuse) that it breaks our hearts. We welcome visitors, but this small, fragile trail does not seem ecologically structured to reasonably survive the huge volume of hikers. We are very concerned about its future. Please help conserve the Anne U. White trail. Help protect it from being ruined. Thank you so much.
Betasso Preserve	I've had too many nasty encounters when speaking up about right-of-way and why they are here on Wed. or Sat. They can be way too aggressive when I've told them they should not be here or that I have the right-of-way. Families are on this trail and bikes go way too fast.
Betasso Preserve	It would be nice if there were some more dog-specific areas where dogs can be off leash.
Betasso Preserve	Enforce dog leash rules.
Betasso Preserve	Suggestion - green tag kind of dog program.
Betasso Preserve	I am very concerned about the proposal to allow mountain bikes in the WTSA west of Broadway. This pristine area should be preserved for hikers, walkers, and wildlife! Please do not allow mountain bikes there.
Betasso Preserve	I am very concerned with the current direction of use being mandated for Boulder County Open Space. More and more I see trail usage restricted or closed. This is not why I voted for Open Space taxes. If restrictions continue, I will not continue to support more or continued taxation.
Betasso Preserve	I encourage you to adopt sight/voice control for dogs instead of mandating leashes - at least on weekdays with fewer visitors.
Betasso Preserve	Would love to see the [no bike days] expanded to all the trails - everybody would be happy. Thanks
Betasso Preserve	Check list brochure would be nice to have pics of what to check off - birds and such!!
Betasso Preserve	Keep it quiet and unimproved! No paving, no lights, no more bathrooms, etc. Thanks!
Betasso Preserve	Keep wildlife viewing a high priority - breeding birds would be adversely impacted if too many bikers/runners/dogs started using trails.

* **Bold Comments** indicate comments that fit into both the positive and suggestive comment categories, and were split into two comments as such.

<i>Property</i>	<i>Suggestive Comments*</i>
Betasso Preserve	More trails without bikes!!!
Betasso Preserve	Need birding as a category.
Betasso Preserve	Need more [trails]!
Betasso Preserve	Please include the designated activity "Birding" to question 1.
Betasso Preserve	Please put birding in as a category.
Betasso Preserve	Survey is too long.
Boulder Canyon Trail	Bikers need to stay on left!
Boulder Canyon Trail	Dogs should wear "backpacks" to carry out their own poop.
Boulder Canyon Trail	I am concerned about large family groups coming to parks and taking over areas so that local residents do not have access to park or tables, etc. These are groups that truck in barbeque grills, chairs, etc. and do not clean up after themselves. Specifically Eben Fine Park. I am also concerned about trash, litter, used diapers, etc. being left in the bushes - maybe some signs would help - "Please leave our parks as you find them" ... or better "If you see trash, pick it up". Something like that. You guys do a great job! Thanks!
Boulder Canyon Trail	I would love more mountain biking trails.
Boulder Canyon Trail	I'm still in high school and the more mtn. bike trails the more my demographic gets out.
Boulder Canyon Trail	The only conflict I see with City of Boulder Parks and Recreation's Eben G. Fine Park with the overload of tubers and water ecosystem. The high amount of people in the water is killing the delicate and balanced water ecosystem that supports the aquatic life forms (fish, frogs, etc.).
Boulder Canyon Trail	There should be a bike trail that allows mtn. bikes to go from Baseline (Chautauqua) to Eldorado Springs and S. Boulder trails.
Boulder Canyon Trail	Want further trails.
Caribou Ranch Open Space	Add more trails like this.
Caribou Ranch Open Space	Allow mtn. bikes sometime.
Caribou Ranch Open Space	Dogs would be beneficial if an individual is out alone and needs a decoy from a mtn. lion.
Caribou Ranch Open Space	I think more trails should be open to leashed dogs wherever possible.
Caribou Ranch Open Space	Since it is 2+ miles to the mine site, I think it would be beneficial to allow people to use the road and get closer. A lot of people cannot walk 2+ miles, so some accommodation needs to be made to allow them to visit the mine, which is the best part of this area.
Caribou Ranch Open Space	The need for parkland and open space is ever growing as more people become aware of the environment and take responsibility for their own health and fitness. We need more!! Just look at the crowds at RMNP.
Caribou Ranch Open Space	You could add one sign when you exit the mine to direct you to the trail as opposed to taking the dirt road. Pursue trail further. Finish the bridge above the mine.
Caribou Ranch Open Space	Trail from Blue Bird Mine to east side of Blue Bird is hard to find.
Carolyn Holmberg Preserve	Fishing on shore creates trash, fishing line for my dog to get tangled in while he is on leash swimming. I worry about hooks and lures in water. Perhaps designated areas and platforms for fishing to avoid snags?
Carolyn Holmberg Preserve	A little longer would be nice, also less industry view would be a bit nicer I think.
Carolyn Holmberg Preserve	Shade over benches please.
Carolyn Holmberg Preserve	There is no check box for native american or alaska native.

* **Bold Comments** indicate comments that fit into both the positive and suggestive comment categories, and were split into two comments as such.

<i>Property</i>	<i>Suggestive Comments*</i>
Coal Creek Trail	Close to the south end of Center Village Drive (east of) there's a new flagstone path to bench by creek. Would like to see more of these.
Coal Creek Trail	I would like to see Coal Creek Trail connected with other trails at the eastern end of the trail.
Coal Creek Trail	It would be nice if occasionally we could talk to a ranger!
Coal Creek Trail	Maybe even some educational signage about [prairie dogs] importance.
Coal Creek Trail	More front country single track! More maintenance of trails!
Coal Creek Trail	More security here - come alone, don't feel safe at times, attacked by a dog once.
Coal Creek Trail	More trails for mtn. biking and dogs off leash please so I can exercise my very active dog.
Coal Creek Trail	Outhouse at Aquarius Trailhead.
Coal Creek Trail	Add restroom at Aquarius Trailhead.
Fairgrounds Lake	Hook up to Lyons would be good.
Fairgrounds Lake	I want it bigger and more wild, like they got in Boulder.
Fairgrounds Lake	I would like to see a trail (concrete) connecting Pella Crossing to Golden Ponds.
Fairgrounds Lake	Too many questions.
Hall Ranch	A sign or 2 of mountain bike rules (right-of-way) would be nice for newcomers.
Hall Ranch	Allow dogs and open Nighthawk to biking.
Hall Ranch	I think horses should not be allowed on the trail when it is muddy! They are widening the trails and ruining the existing trails. It appears this will increase erosion.
Hall Ranch	Survey is too long to collect valid info.
Hall Ranch	Women's bathroom doesn't lock.
Hall Ranch	Continue to buy more land, more trails for mountain bikes. Lyons rules over Boulder as far as quantity and quality of bike trails. Make connector trail from town to Hall Ranch - front side. Continuous trail from Lyons to Boulder. I have always found that mtn. bikers are always courteous and yield to peds, horses, and uphill riders. No conflicts. I'm a big trail runner as well, so I'm not really biased toward riding.
Hall Ranch	Horse manure is a drag. It smells and attracts flies. Too much open space not available for rec. use. Not what I pay the open space tax for. Too crowded on weekends.
Heil Valley Ranch	Biggest issue is room for hikers on the trails with so many bikes.
Heil Valley Ranch	Charge new residents.
Heil Valley Ranch	Have sign in bathroom about not throwing trash in toilets, need trash can in bathroom.
Heil Valley Ranch	More trash bins for dog poop on all Boulder County trails.
Heil Valley Ranch	My daughter and I are constantly picking up trash off the trail that the mountain bikers left behind - parts of their bikes. The bikers speed past us and almost hit us several times. A mountain biker started arguing with me because I did not yield to him.
Heil Valley Ranch	Need dedicated staff to maintain trails all year long.
Heil Valley Ranch	One section of trail is becoming exposed. Trail netting is visible.
Heil Valley Ranch	Please do not close more trails to dogs. Just enforce current voice/sight control rules.

* **Bold Comments** indicate comments that fit into both the positive and suggestive comment categories, and were split into two comments as such.

<i>Property</i>	<i>Suggestive Comments*</i>
Heil Valley Ranch	The bikers are zooming past us and getting close to hitting us. They are also not giving us the right of way when we deserve it.
Heil Valley Ranch Picture Rock Trail	Allow more dogs in open space!
Heil Valley Ranch Picture Rock Trail	Noticed that someone had killed a large rattlesnake on the trail. I have also noticed more rattlesnakes on the trail this year from last. Most about snakes noticed in the first mile.
Lagerman Reservoir	Ate lunch in my car today because the covered table was already taken...and I burn very quickly. Hadn't thought of renewable energy facilities in open space before. Good idea, though, not for this park. Maybe larger parks could hold a solar field without marring the view and landscape. Wind farms are generally too large for the parks, and would definitely detract from the experience I expect at the parks. Let the plains hold those wind farms - keep the front range and mtn. parks open.
Lagerman Reservoir	Could really use a restroom at Teller Lakes/White Rock Trailhead.
Lagerman Reservoir	I really wish there was more than one trail out here and some trees. Thanks.
Lagerman Reservoir	Open space should be open to visit!
Lagerman Reservoir	Signs about birds would be nice. It would be nice to create more habitats for wildlife.
Lagerman Reservoir	Trees and shrubs around the lake.
Lagerman Reservoir	Yes I would like to have the option to swim in the reservoir.
Legion Park	Fill the potholes!
Legion Park	More signs for information.
Legion Park	Race and income is none of your business.
Mud Lake	Every time I come here I get lost, maps at trail cut-offs would be great.
Mud Lake	I am 62 years old and I have been riding mountain bikes for almost 30 years. I would like to see more education about trail use and respect for other people on the trails, possibly at bike shops.
Mud Lake	I love to bike here but I feel it isn't totally safe because the trails are easy (so we ride fairly fast) and lots of families with children hike here - I think it would be good to have alternate days (except, since not many cyclists here, maybe it's not too critical at this point).
Mud Lake	More access to info on off-leash dog trails.
Mud Lake	More Loose Dog Enforcement.
Mud Lake	Please consider OHV users needs - consult with Blue Ribbon Coalition.
Mud Lake	Provide more info about plants, possibly offer native plants for sale.
Mud Lake	Would love to know the story behind the burnt-out school bus! Looks like a monument to Colorado of the 70's.
Niwot Loop Trail	Dog owners need to clean up after themselves or get tickets ... especially in sunny weather. Nice day!
Niwot Loop Trail	People need to be more considerate about picking their dog poo up from the trail and it would be very helpful to have a couple more trash cans along the way so one isn't walking/jogging so far clutching bags of dog poo.
Niwot Loop Trail	I oppose increased restrictions on dogs. The Twin Lake that's open to unleashed dogs is the perfect example of how to do things right. Also, more trash cans on all trails would cut down on conflict over bagged dog poop.

* **Bold Comments** indicate comments that fit into both the positive and suggestive comment categories, and were split into two comments as such.

<i>Property</i>	<i>Suggestive Comments*</i>
Niwot Loop Trail	My only problem is loose dogs.
Niwot Loop Trail	Open White Rocks to bikes.
Niwot Loop Trail	Please control the running clubs! They take over the trails.
Niwot Loop Trail	Please enforce the unleashed dogs as I walk here with my leashed dogs 2-3 times a day and almost always have to deal with unleashed dogs which seems to become my fault when I have issue with the dog owner. It is not fair for my dog to have to deal with unleashed dogs even when the owner says "oh he is friendly". This has been an issue for us for almost 20 years. Please start fining people as it will help stop. Thank you.
Pella Crossing	it was too long and an imposition.
Pella Crossing	Could use more picnic areas.
Pella Crossing	Do not let this become the Reservoir (Dogs) nor Hall Ranch (prairie dogs and bikes). Feed horses "weed free hay" 24 hours before coming here.
Pella Crossing	Dogs off-leash inappropriate at any open space facility.
Pella Crossing	Hitching rack for horses would be great.
Pella Crossing	I have a philosophy I borrowed from the film "Field of Dreams" ... "build it and they will come." So I take a rather selfish attitude when it comes to Open Space, in that, the nicer, the more accessible...the more people come and abuse the privilege. So I'm not so keen on making NATURE easy, to be in...EASY to get to. I'd prefer that natural places are left as they are found with very little "modern conveniences". I've lived in Boulder County off and on for more than 35 years. There are now places where I used to hike, bike, and walk my dog/ days that are so crowded I can't enjoy going there anymore. My favorite times at Pella are in snowstorms because only us hardcore folks show up
Pella Crossing	I'd like to have catfish.
Pella Crossing	If dogs could be off leash or at least be able to swim off leash. Maybe try this in a designated area to see how it would work.
Pella Crossing	Only the comment about trash barrels.
Pella Crossing	Please add more green landscaping! And a water fountain and sinks!
Pella Crossing	Spray for mosquitoes.
Rabbit Mountain	leave it alone.
Rabbit Mountain	I think the last two questions are not necessary or appropriate.
Rabbit Mountain	Personnel shouldn't tell you to walk through the mud because it risks serious injury.
Rabbit Mountain	I said more trails would be nice and yet not at the risk of overcrowding. Currently good design for size of park. Please don't exclude dogs - we love ours and obey the rules. I've never had any conflicts in over 10 years here.
Twin Lakes	Want the map to indicate the length of the trail loops around each lake.
Twin Lakes	However, far too many dogs are not only off leash, they are running loose and wild, sometimes, more than 100 yards from their owners. Most of these owners have no control whatsoever. Their dogs do not pay attention to their feeble attempts to call them or "command" them. I realize the scope of this problem is too big for Parks and Open Space to solve with more enforcement alone.
Twin Lakes	Please do not drain lakes! It is depressing and detracts from Twin Lakes beauty.
Twin Lakes	Please replace the barbed wire on the west side with something dog proof and less dangerous.
Twin Lakes	Survey too long - quit after first page.

* **Bold Comments** indicate comments that fit into both the positive and suggestive comment categories, and were split into two comments as such.

<i>Property</i>	<i>Suggestive Comments*</i>
Twin Lakes	The biking area that contains ups and downs and jumps are no longer inviting to the general rider. I believe this is because a bicycle can no longer stay with its wheels against the ground to take a whirl around. Now there is almost exclusively jumps with straight drop off edges. These are intimidating to all except the experienced bicycle riders. The general rider like myself usually falls into the pit between the jump and that really hurts.
Twin Lakes	It would be nice to fence the remaining section w/dog proof. My son has volunteered his eagle scout project for this activity.
Walden Ponds Wildlife Habitat	All dogs should be on a leash.
Walden Ponds Wildlife Habitat	Belly boats on deeper ponds would be swell.
Walden Ponds Wildlife Habitat	I wish I had seen more young cottonwoods. This is such a critically important tree species for an ecosystem. I notice that these cottonwoods are rarely being planted in the city limits. I'm sure it's because they're considered too hazardous due to soft wood. But out here is the perfect environment for them. Please! If there's any extra money to be spent improving Walden and Sawhill Ponds can it please be spent on planting and up keeping this vital native tree species - it would benefit us with shade and provide critical wildlife habitat and help mitigate the brutal ugliness of the gravel pit mining that desecrated this area.
Walden Ponds Wildlife Habitat	Could use more signage and more trails if you have space.
Walden Ponds Wildlife Habitat	More simple benches for those who need a hand.
Walden Ponds Wildlife Habitat	Please keep leash-only dogs.
Walden Ponds Wildlife Habitat	Parking - sign now up is still strange - parking in designated spots only? So what is designated at Wally Tores Pond? Why can't people park along the road when lot at Cottonwood is full. Signage still does not adequately tell where not to park - any ticketing overflow cars not in any way a safety problem makes no sense.
Walden Ponds Wildlife Habitat	Survey is too long.
Walden Ponds Wildlife Habitat	Walden Ponds is widely used by birders. I encounter more birders than any other type of visitor. Preservation of bird/wildlife habitat should be priority.
Walker Ranch Loop Trail	Don't charge visitors, we'll stop and eat in Boulder. Otherwise we'll ride in Golden/Jeffco. Thx.
Walker Ranch Loop Trail	For cyclists, helmets should be required.
Walker Ranch Loop Trail	Please don't close the park at sunset - at least that is what the sign says. A moonlight hike here is wonderful - as is the long sunsets. Thanks!
Walker Ranch Loop Trail	Need more mtn. Biking north of Eldorado Drive.
Walker Ranch Loop Trail	Please re-stain the bench by the river for our friend John Sturgis Jacobs. Thank you!
Walker Ranch Loop Trail	Set up trash bags for poop disposal.
Walker Ranch Loop Trail	Trail access within riding distance of Boulder is very limited. There would be less biker/hiker conflicts if more trails were open to bikes, not less. Walker, Betasso, Marshall and Heil (to a lesser extent) are really the only options.
Walker Ranch Meyers Homestead Trail	Allow dogs on open space tags!
Walker Ranch Meyers Homestead Trail	Connect Walker to other Open Space for mountain bikers and hikers - then less people will drive here.
Walker Ranch Meyers Homestead Trail	Too much private property with no access!
Walker Ranch Meyers Homestead Trail	More bike trail access.

* **Bold Comments** indicate comments that fit into both the positive and suggestive comment categories, and were split into two comments as such.

Appendix J

Property Specific Sampling

Property	Confidence Interval	Margin of Error
Anne U. White	90%	7.6%
Bald Mountain	90%	10.6%
Betasso Preserve	90%	6.1 %
Boulder Canyon Trail	90%	6.5%
Carolyn Holmberg Preserve	90%	8.7 %
Coal Creek Trail	90%	6.9%
Caribou Ranch Open Space	90%	7.4 %
Fairgrounds Lake	90%	9.4%
Hall Ranch	90%	6.6%
Heil Valley Ranch	90%	6.4%
Lagerman Reservoir	90%	8.3%
Legion Park	90%	10.3%
Mud Lake	90%	7.6%
Niwot Monarch Loop	90%	9.6%
Pella Crossing	90%	6.8%
Rabbit Mountain	90%	6.9%
Twin Lakes	90%	6.7%
Walden Ponds Wildlife Habitat	90%	7.8%
Walker Ranch: Loop Trail	90%	6.9%
Walker Ranch: Meyers Homestead	90%	8.6%