

Twin Lakes

LEGEND



Recreation Area
Pets Off Leash Area



Trailhead Parking



Fishing



Multi-use Trail
(pedestrian, equestrian, bikes)



Dogs-Off-Leash Trail



Paved Road



Regional Trail



Recreation Area
Pets Must Be On Leash

Connect

www.BoulderCountyOpenSpace.org

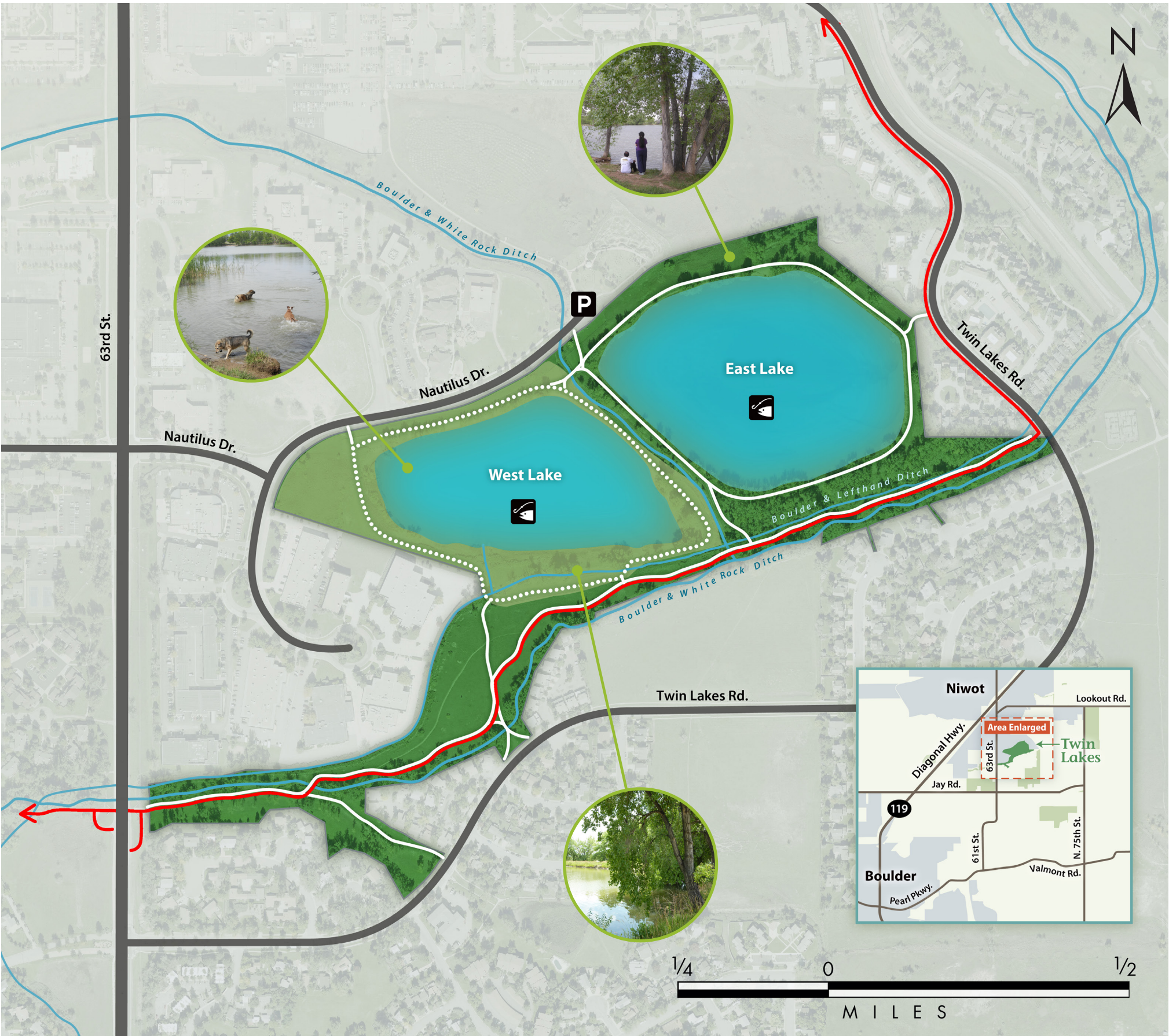
- maps and directions
- current trail conditions
- property information and photos
- current news and events
- download free GPS Trails App



facebook.com/BoulderCountyOpenSpace



@BoulderCountyOS



TRAIL TIPS

- Dogs must be on leash everywhere except on the West Lake Trail.
- You are required to clean up dog waste to keep the plants and watershed healthier, and to keep other trail users from smelling or stepping in it.
- Twin Lakes open space is open from sunrise to sunset. The Longmont-to-Boulder regional trail is open to commuters 24 hours per day.