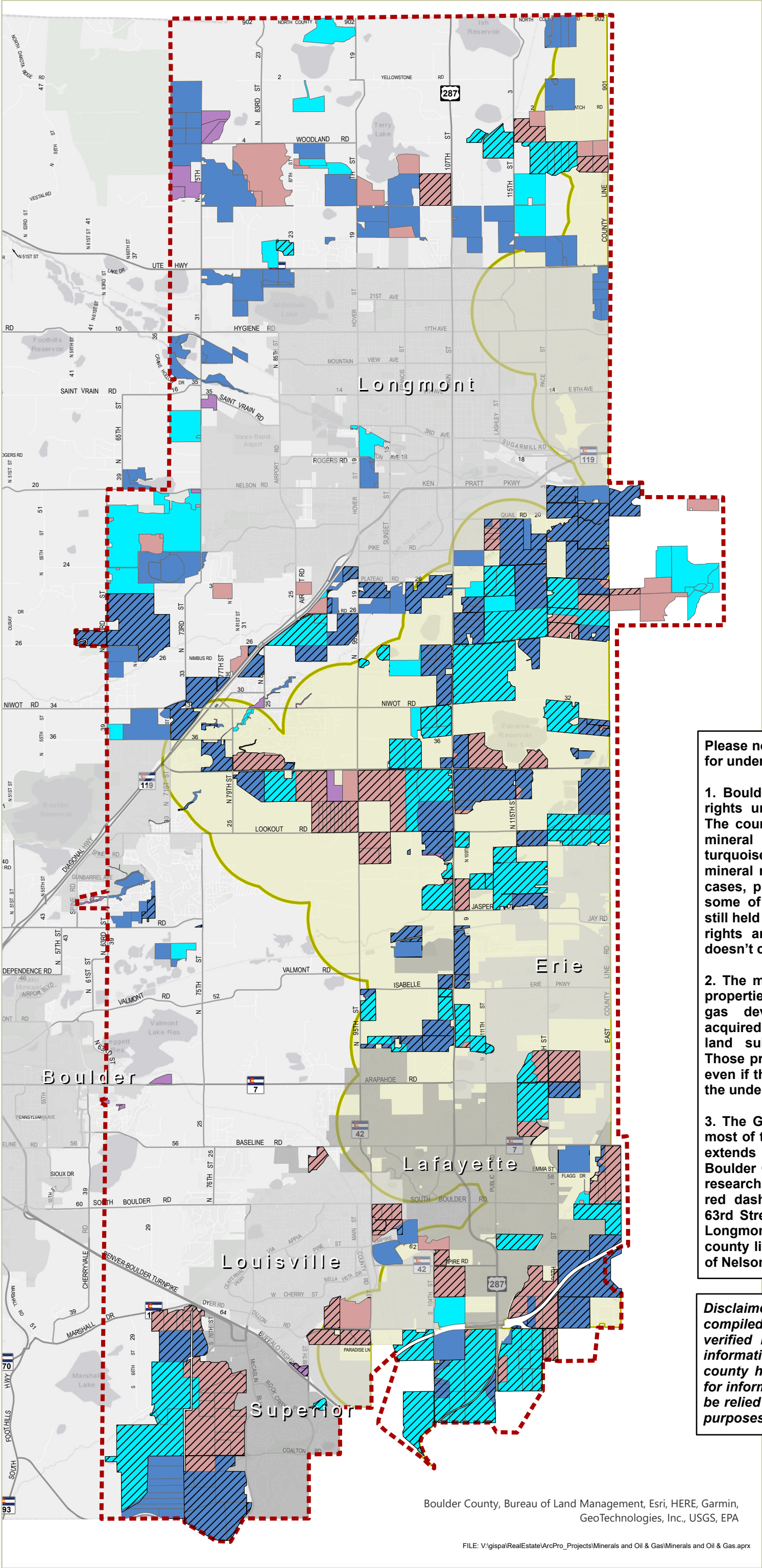


Boulder County Open Space - Mineral Interests Encumbered by Oil & Gas Leases



Parks & Open Space

2023

- Area Researched
- Oil and Gas Leases
- County Owns All Minerals
- County Owns Some Minerals
- County Does Not Own Minerals
- Not Yet Researched (Fee Property)
- Greater Wattenberg Area in Boulder County

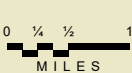
Please note the following important information for understanding this data:

1. Boulder County owns 100% of the mineral rights under the properties denoted in blue. The county owns some (but not 100%) of the mineral rights under properties denoted in turquoise. The county always buys all of the mineral rights that a seller owns, but in some cases, prior landowners had already reserved some of the mineral rights. Those rights are still held by third parties. Whenever any mineral rights are held by third parties, the county doesn't control use of the minerals.
2. The mineral rights under some open space properties were already leased out for oil and gas development before Boulder County acquired them, so the county had to accept the land subject to those pre-existing leases. Those properties may have oil and gas activity even if the county later acquired some or all of the underlying mineral rights.
3. The Greater Wattenberg Area (GWA), where most of the current oil and gas activity occurs, extends only into the eastern portion of Boulder County. For this reason, county staff's research has targeted the area outlined by the red dash, between the east county line and 63rd Street (for land south of Nelson Road in Longmont), and the area between the east county line and 75th Street east (for land north of Nelson Road).

Disclaimer: The information on this map was compiled by county staff and has not been verified by a mineral title expert. While this information represents the best information the county has been able to compile, this map is for informational purposes only and should not be relied on for legal, contractual or permitting purposes.

Boulder County, Bureau of Land Management, Esri, HERE, Garmin, GeoTechnologies, Inc., USGS, EPA

FILE: V:\gispa\RealEstate\ArcPro_Projects\Minerals and Oil & Gas\Minerals and Oil & Gas.aprx



The user agrees to all Terms of Use set forth by Boulder County For Terms of Use, please visit: www.bouldercounty.org/mapdisclaimer