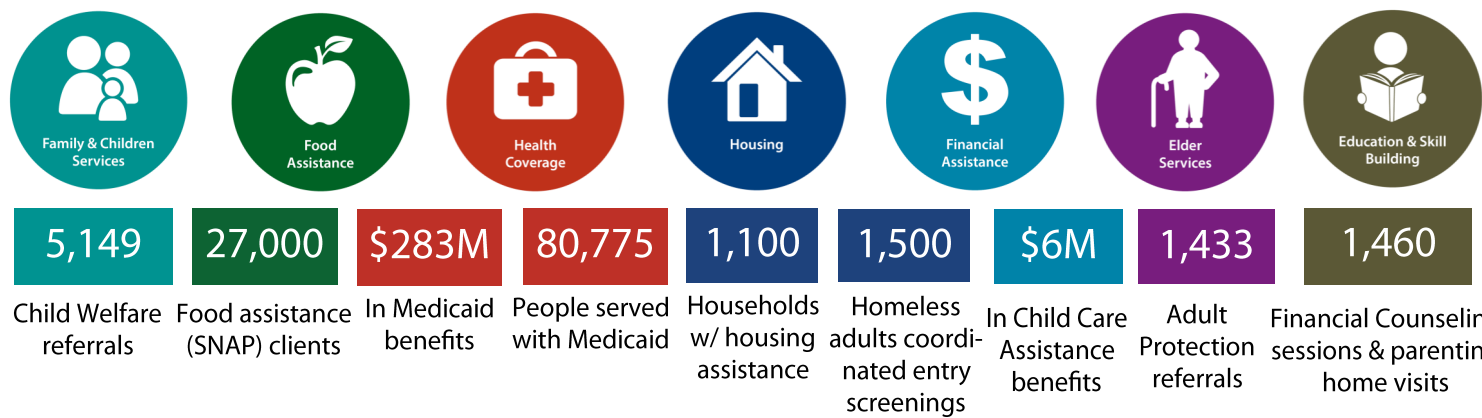




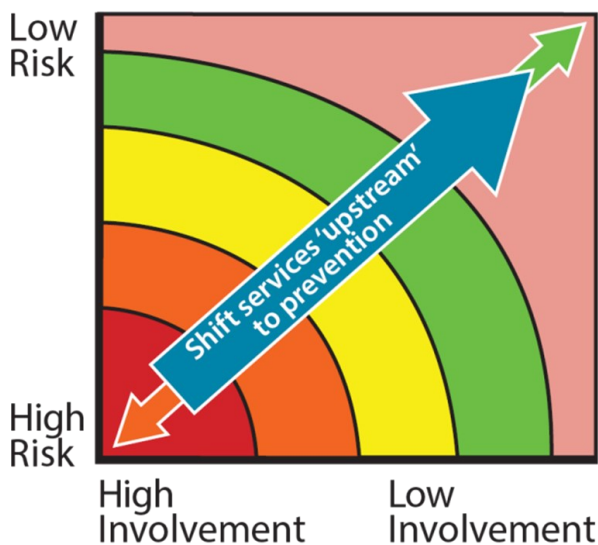
Resulting from the 2008 merger of the county's then-Social Services and Housing Departments, the Boulder County Department of Housing and Human Services (BCDHHS) has, over the past decade, evolved into a 500-person integrated services delivery organization that is focused on supporting whole families and individuals through a Two Generation, Social Determinants of Health approach. Over an average 12 months, **we now serve more than 90,000 distinct clients** with a wide range of wrap-around services, including food, housing, health coverage, child care, safety, education and skill building, parenting supports, and much more.

In the most recent 12 month period, BCDHHS oversaw:



The Social Determinants of Health demonstrate the connectedness between conditions in which people live, work, and play and their health risks and other outcomes. Research is clear that unstable housing, low income, lack of employment options, unsafe neighborhoods, and substandard education negatively impact health and well-being. We approach strategic priority development work with an eye toward identifying priorities through a Social Determinants lens. This prompts us to consider all options in terms of their potential for the biggest positive overall impact on the health and well-being of community members, and for their potential for working together to positively impact other Social Determinants areas.





We are working to identify and address the *root causes of crisis and instability* for those we serve, and in turn we are transforming ourselves into an organization proactively partnering with our community to help our neighbors live the happiest and healthiest lives possible.

Families and individuals throughout our community are threatened by stressors from increased housing costs, lack of access to adequate food or health care, inability to attain higher-paying jobs, and much more. By getting supports to people earlier, and by doing so in a way that is rooted in solid data and best practices, we are empowering people and strengthening families as we work to build a healthy, connected community.

Included in our work is leadership of a multi-jurisdictional collaboration to boost the entire region's supply of affordable housing to 12% of total housing stock by 2035. The **Boulder County Regional Housing Partnership's *Regional Housing Strategy***, which recommends tools and methods to reach our goal, was recently awarded Best in Category in Planning by the National Association of Counties (NACo). We are very proud to be on the leading edge of visionary regional collaboration to help address the housing affordability crisis our community faces. See more at www.HousingOurCommunity.org.