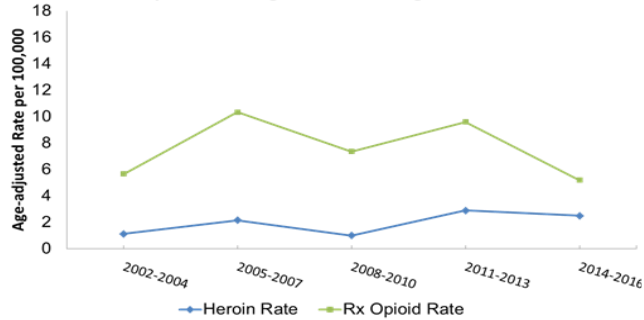
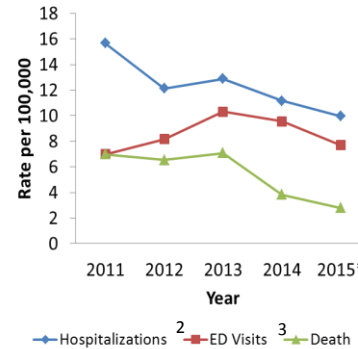


Burden of Prescription Opioids and Heroin Misuse in Boulder County

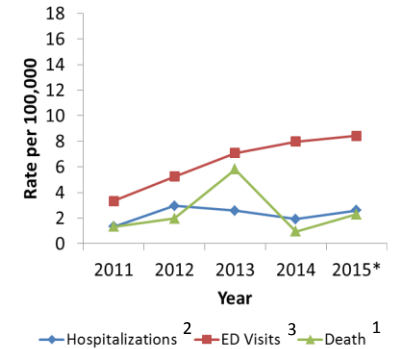
Boulder County Fatal Overdose Rate involving Heroin and Opioid Rx Drugs, 3 Year Averages, 2002-2016¹



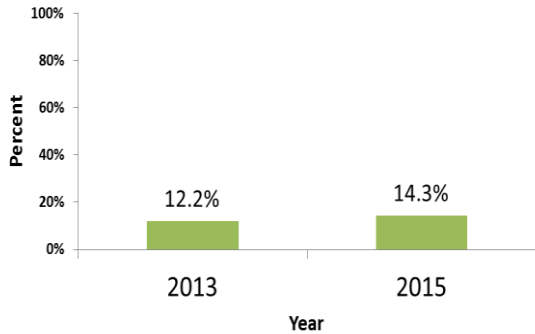
Rx Opioid Overdoses



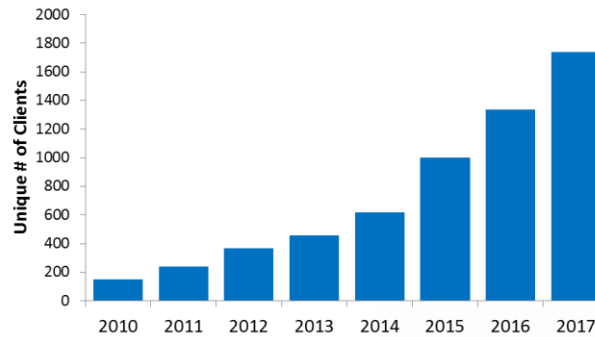
Heroin Overdoses



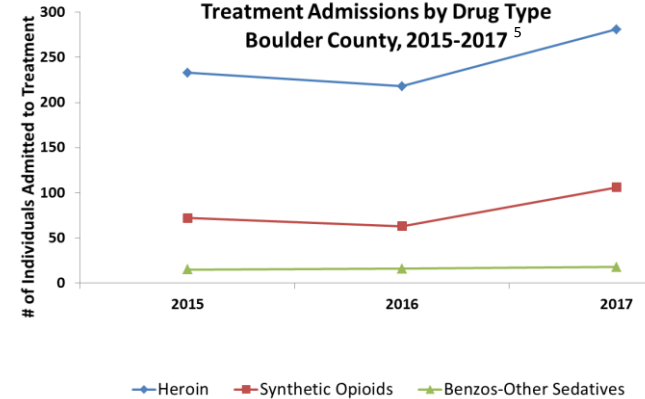
**Ever Used Rx Drugs Without Doctor Rx
BVSD High Schools
HCKS/ YRBS, 2013 and 2015⁴**



Number of Unique Participants in Syringe Access Programming in Boulder County 2010 - 2017



**Treatment Admissions by Drug Type
Boulder County, 2015-2017⁵**



¹ Colorado Vital Statistics Mortality Data Set, <http://www.chd.dphe.state.co.us/topics.aspx?q=Mortality_Data>, accessed on January 15, 2018

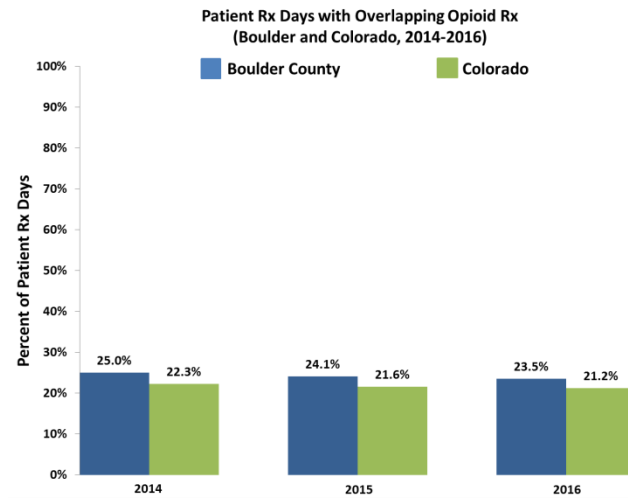
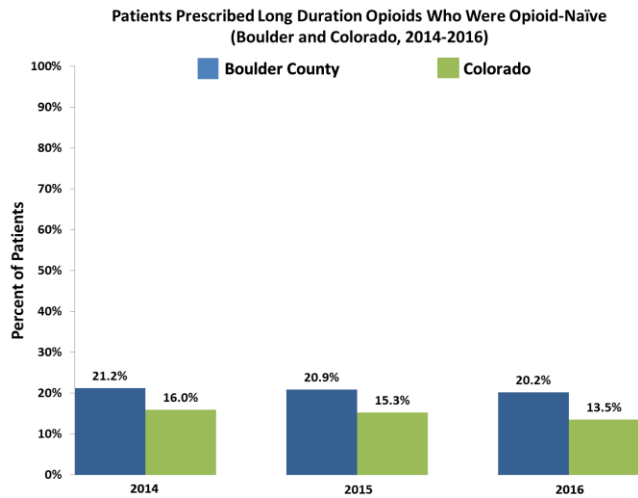
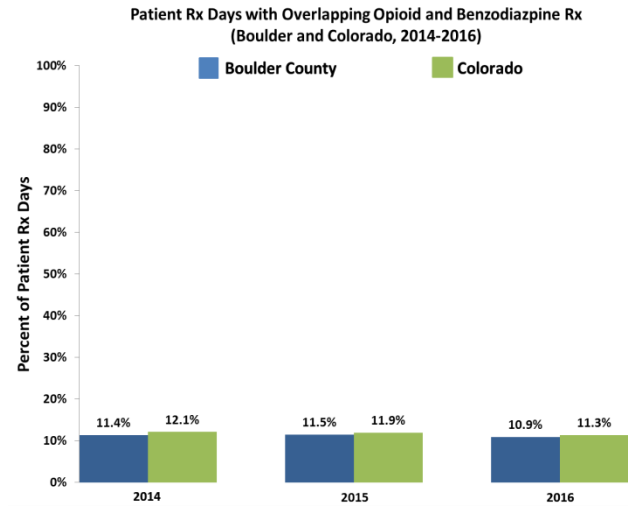
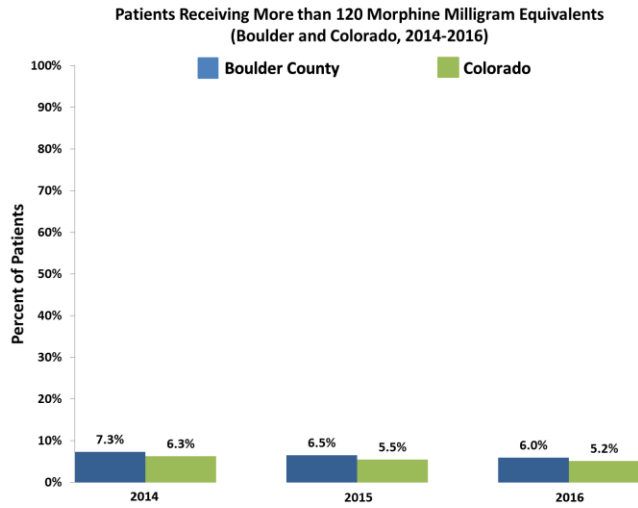
² Colorado Hospital Association, Hospital Discharge Data, <<http://www.chd.dphe.state.co.us/cohid/injurydata.html>>, accessed on January 15, 2018

³ Colorado Hospital Association, Hospital Emergency Department Data, <<http://www.chd.dphe.state.co.us/cohid/injurydata.html>>, accessed on January 15, 2018

⁴ Boulder County Public Health, Healthy Kids Colorado Survey 2013 and 2015 <<http://www.bouldercounty.org/family/youth/pages/yrbresultslinks.aspx>>, accessed on January 15, 2018

⁵ Drug Alcohol Coordinated Data System, Office of Behavioral Health, 2015-2017, accessed March 1, 2018

Boulder County and Colorado High Risk Opioid Prescribing Practices⁶



⁶ Health Information Designs (HID), LLC. Colorado Prescription Monitoring Program. <http://www.hidesigns.com/copdmpo>. Accessed January 19, 2018.