



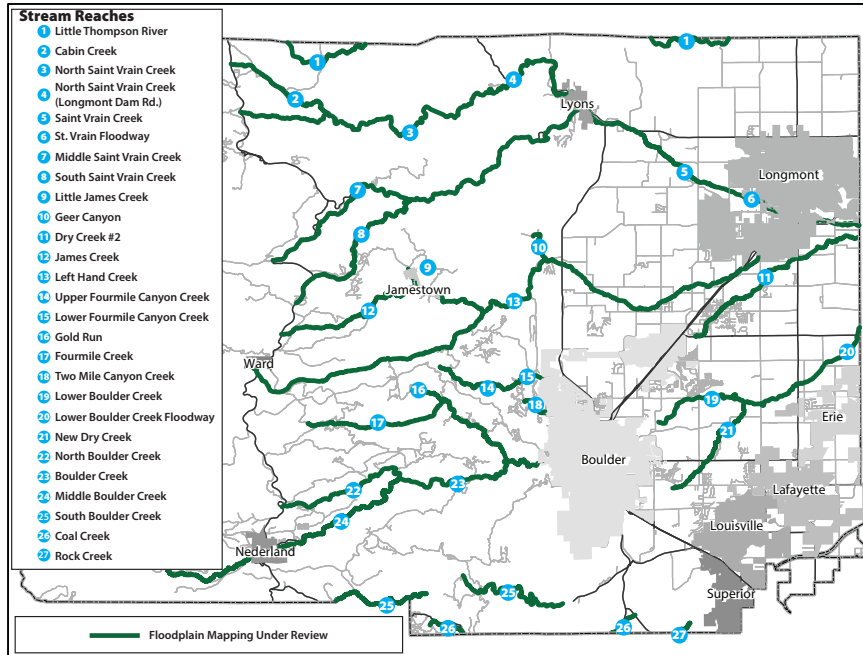
# BOULDER COUNTY FLOODPLAIN REMAPPING NEWSLETTER

## 8<sup>th</sup> Edition – Fall 2018

In response to the 2013 flood, the state-funded **Colorado Hazard Mapping Program (CHAMP)** is updating local flood hazard information for the Front Range's most affected waterways, including Boulder County stream reaches. Visit [www.BoCoFloodplainRemapping.com](http://www.BoCoFloodplainRemapping.com) to view the county's Official Map and see what floodplain mapping revisions are underway.



### FLOODPLAIN MAPS UNDER FEMA REVIEW



The development of hydraulic modeling and floodplain mapping for the CHAMP study and floodplain mapping adoption into the local Boulder County Regulatory Floodplain is now complete. Information about the floodplain remapping process to-date and links to past outreach materials are available at our project website listed **above**. The next step is revising the FEMA flood hazard data by producing Preliminary Flood Insurance Rate Maps (Preliminary FIRMs), which is currently underway. For questions about preliminary flood hazard data, visit [www.FEMA.gov](http://www.FEMA.gov).

#### What are Preliminary FIRMs?

Preliminary FIRMs are flood maps produced by FEMA during the remapping process that allow the public an early opportunity to review and comment on proposed floodplain mapping changes. Without the additional outreach surrounding draft maps from the CHAMP study performed by Boulder County over the past two years, this would've been the first opportunity for the community to view revised floodplain maps. These *preliminary* maps and data are used to create the *final* effective FIRMs that identify local flood hazards and determine flood insurance ratings.

Sign up for the Floodplain Remapping Project listserv at [www.BoCoFloodplainRemapping.com](http://www.BoCoFloodplainRemapping.com)

- Find other resources related to floodplain mapping
- Receive email announcements
- Learn about public meetings

#### Viewing Preliminary FIRMs

We anticipate FEMA publication and release of Preliminary FIRMs for all CHAMP-studied Boulder County stream reaches in mid-2019. Once Preliminary FIRMs are received by Boulder County, the maps will be made available online and we will hold public meetings to encourage public review and enable the community to meet with participating county, state, and FEMA staff to discuss 1) changes since the draft maps, 2) the FEMA map appeals process (described on next page), and 3) address other questions about the mapping process.

Sign up for the listserv by visiting our project website to stay informed as more information on the Preliminary FIRMs and public meeting schedule becomes available.

#### ESTIMATED TIMELINE:

mid-2019:  
Preliminary FIRMs

late-2019 / 2020:  
Appeals

2021+:  
Effective FIRMs

Timeline subject to change

## SUBMITTING DATA THROUGH FEMA APPEALS PROCESS

FEMA will accept public input on the county Preliminary FIRMs and associated report through an appeals process that will include a 90-day public appeal period in late 2019 or early 2020. Outreach related to the appeals period will be sent out prior to the 90-day window for appeal submissions.

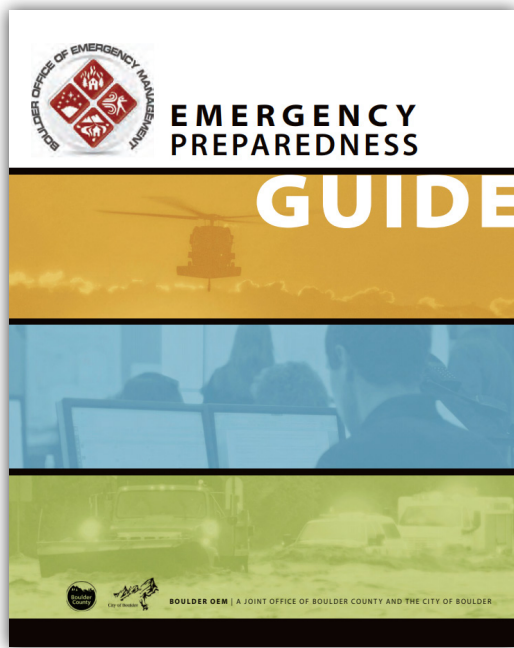
During the FEMA appeal period, Boulder County will track and gather technical data and non-technical comments to be submitted to FEMA at the end of the 90-day window. If warranted, FEMA will revise the Preliminary FIRMs and/or reports to reflect information submitted in support of the appeal(s) and provide these materials with an appeal resolution letter.

### An appeal and its supporting data must be related to:

- 🔥 New or modified Base Flood Elevations
- 🔥 Base flood depths
- 🔥 Special Flood Hazard Area (SFHA) boundaries
- 🔥 SFHA zone designations
- 🔥 Floodways

All data submitted for appeals must adhere to FEMA's standards for hydraulic modeling, topographic data capture, and related guidance. Challenges received by FEMA from the county that do not address this subject matter will be considered comments only.

## BE PREPARED AT HOME



It's never too early to begin thinking about the next flood season. Although flood season does not officially begin again until April, there are many things that you and your family can do to prepare for floods and other hazards that we are susceptible to in Boulder County. Most importantly, for floods:

- 🔥 Know your neighborhood flood history and low-lying areas
- 🔥 Determine if your home and workplace are in a floodplain
- 🔥 Stay alert for changing weather conditions
- 🔥 When conditions indicate the potential for flooding, get out of low-lying areas, canyons, and areas downstream from dams
- 🔥 If flooding becomes likely, consider filling up sinks, bathtubs, and other containers with clean water

The Boulder Office of Emergency Management (OEM) **Emergency Preparedness Guide** is available for download on the OEM website - <https://bit.ly/2QoucHo>.

And remember, you can buy flood insurance no matter where you live or what your flood risk, but you should not wait until the rainy/flood season (April - September) to make a decision. There is a 30-day waiting period before coverage goes into effect. By law, flood insurance is issued as a separate policy through the Federal government, and can be purchased through your existing insurance company and agent. Go to [www.FloodSmart.gov](http://www.FloodSmart.gov) to find an agent & learn more.

## STAY INFORMED ABOUT FUTURE DEVELOPMENTS

### Websites

Visit [www.BoCoFloodplainRemapping.com](http://www.BoCoFloodplainRemapping.com) where the county provides information about regulatory floodplains, the Federal Emergency Management Agency (FEMA), the National Flood Insurance Program (NFIP), and CHAMP activities.

### Newsletters & Listserv

Boulder County will continue to publish newsletters as new information becomes available. Each newsletter will provide updates on the floodplain remapping process and will be available both online and via email listserv.

**Not on our remapping listserv?** Registration is available on the Boulder County remapping website.

### In Our Next Newsletter:

After FEMA releases the Preliminary FIRMs, Boulder County staff will begin scheduling public meetings for community members to review maps and learn about the FEMA process going forward.

### Social Media

Important news will also be distributed via Boulder County's social media outlets on Facebook and Twitter at [www.Facebook.com/bouldercounty](http://www.Facebook.com/bouldercounty) and [www.Twitter.com/BoCoDOT](http://www.Twitter.com/BoCoDOT)

### Contact

Floodplain Remapping Contact  
Peter Reinhardt, CFM  
720-564-2652

[floodplainmapscomment@bouldercounty.org](mailto:floodplainmapscomment@bouldercounty.org)

All Boulder County residents are eligible for flood insurance because even homes not located near the floodplain may suffer flood damage. You can learn more about flood insurance at [www.FloodSmart.gov](http://www.FloodSmart.gov).



**NATIONAL FLOOD  
INSURANCE PROGRAM**