



# BIKE MAP

## BOULDER COUNTY

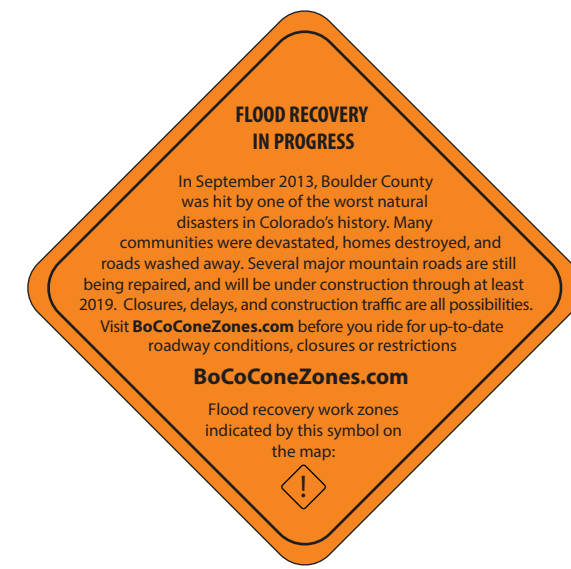
# 2019

### Bicycling Legend

	none
	3-4 ft.
	4 ft. +
	Low Traffic Volumes and/or Speeds
	Medium Traffic Volumes and/or Speeds
	High Traffic Volumes and/or Speeds
	Paved Multi-Use Path
	Soft Surface Multi-Use Path
	Natural Surface Trail
	Bicycles Prohibited

### Base Map Legend

	Paved Road
	Maintained Gravel Road (Collector/Local)
	Unmaintained Gravel Road (Loop or Other)
	County Boundary
	Towns and Cities
	Lake/Reservoir
	Wilderness (bicycling prohibited)
	National Park (bicycling permitted on roads only)
	Federal Lands USFS/BLM
	City and County Open Space
	Colorado State Parks
	Trailhead with toilet
	Park-n-Ride
	Settlements (with services)
	Settlements (no services)
	Trailhead
	Emergency Callbox
	Potable Water
	Peak 8,000 Feet or More
	Trail Access (limited or no parking)
	Hospital
	Milepost (only shown in mountains)
	Restroom
	Fee Area
	Campground
	U.S. Highway
	State Highway



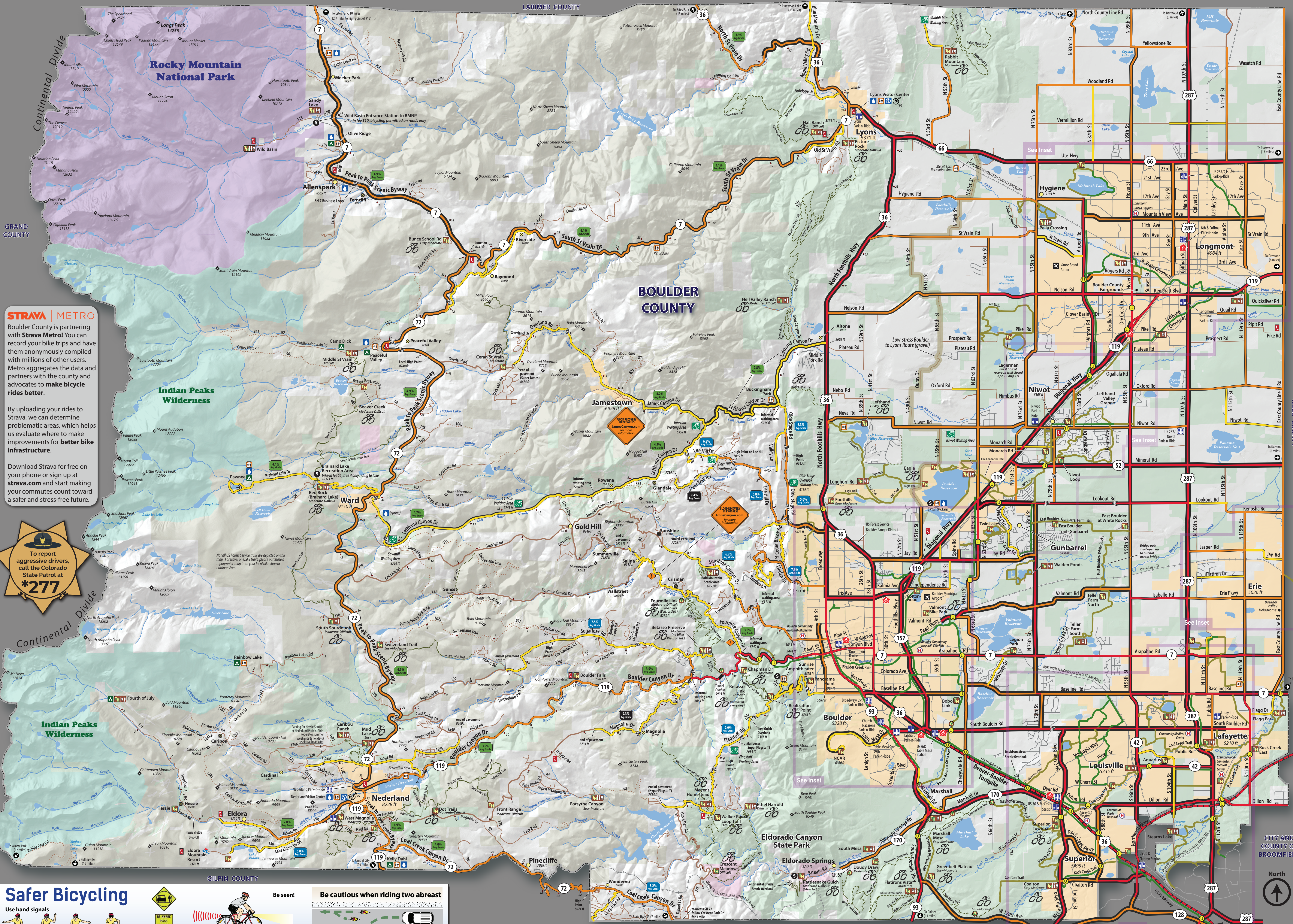
**Bicycle Advocacy Partners**

**BOULDER MOUNTAINBIKE ALLIANCE**

**COMMUNITY CYCLES**  
Creating a culture of cycling

**ERIE SINGLETRACK ADVOCATES**

Map Printed February 2019



**STRAVA | METRO**

Boulder County is partnering with **Strava Metro!** You can record your bike trips and have them anonymously compiled with millions of other users. Metro aggregates the data and partners with the county and advocates to make bicycle rides better.

By uploading your rides to Strava, we can determine problematic areas, which helps us evaluate where to make improvements for better bike infrastructure.

Download Strava for free on your phone or sign up at [strava.com](http://strava.com) and start making your commutes count toward a safer and stress-free future.

To report aggressive drivers, call the Colorado State Patrol at **\*277**

**Safer Bicycling**

Use hand signals

turning right

turning left

slowing down

**Be seen!**

Be cautious when riding two abreast

Two cyclists may ride side-by-side, but "shall not impede the normal and reasonable movement of traffic." Colorado Revised Statutes (CRS) 42-4-112(6)(a)(b). When a car is behind you, you are navigating a blind curve, transition to single file riding. Remember - Courtesy is Contagious!

This map is for illustrative purposes only and the features depicted on it are approximate. More site specific studies may be required to draw accurate conclusions. Boulder County makes no warranties regarding the accuracy, completeness, reliability, or suitability of this map. Boulder County disclaims any liability associated with the use or misuse of this map. In accessing and/or relying on this map, the user fully assumes any and all risk associated with the information contained therein.

The rating system shown on this map is not an assurance that conditions are safe for bicycling. Additionally, the road rating system does not indicate, or guarantee, that these roads have been specifically designed for bicycle use. Boulder County takes no responsibility for users' safety and in no way warrants the safety of the roadways. Highlighting does not signify a higher level of road or infrastructure maintenance and is not meant to recommend or condone a particular roadway.

You are responsible for your own safety. All users should educate themselves on the rules of the road, and cycling safety, before using any of the systems shown. Your skill, fitness level, and comfort in diverse traffic situations, will determine the streets most suitable for your cycling needs. Be aware that automobile speeds and volumes may vary based on the street and/or time of day.

