



Boulder County Land Use Department

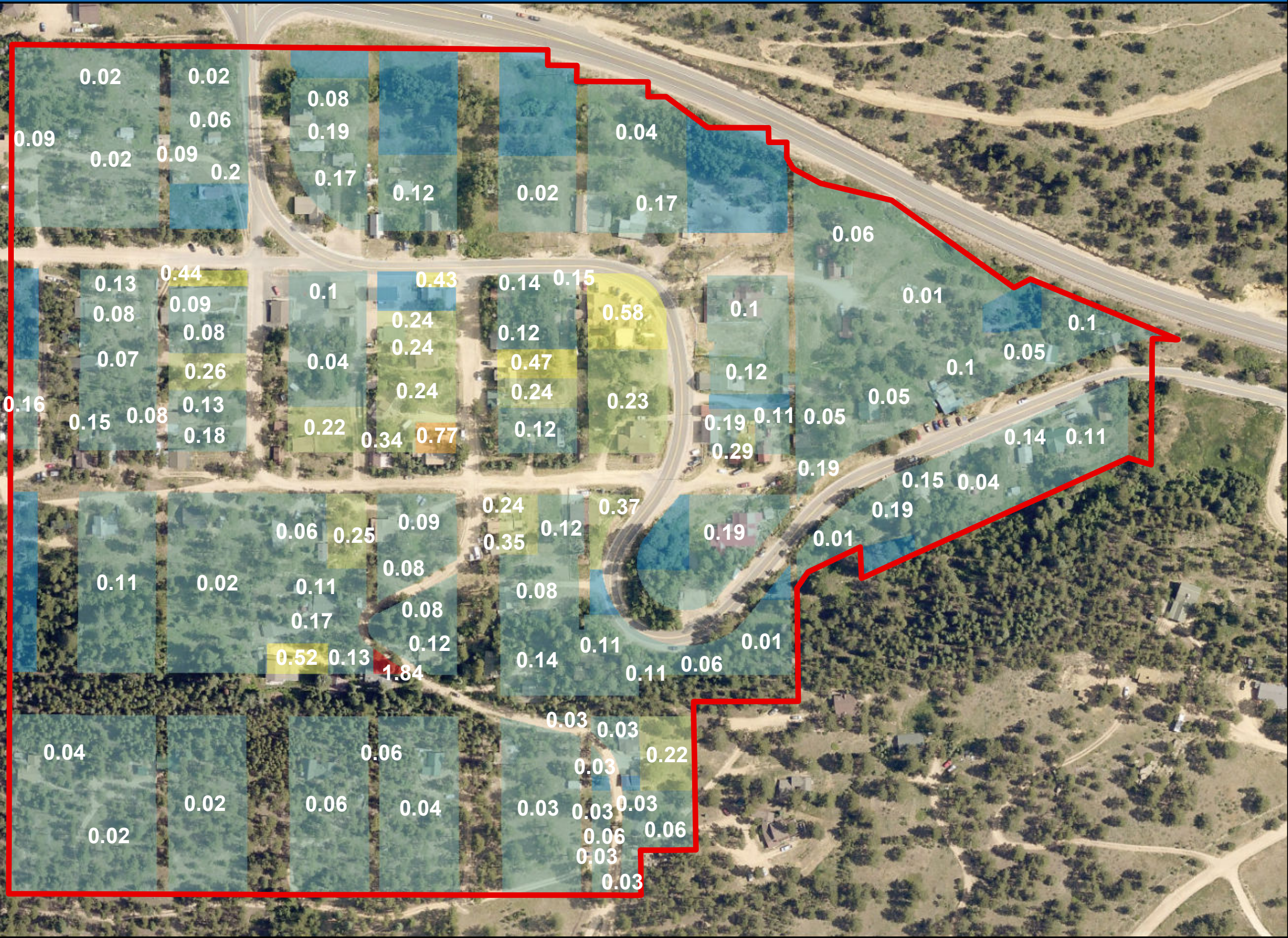
2045 13th Street, Boulder, CO 80302 303-441-3930 www.bouldercounty.org/lu

Allenspark Townsite

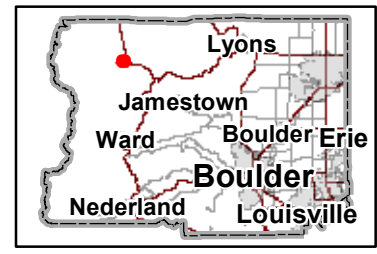
Floor Area Ratio

Legend

- SPR Townsite Boundary
- No Structure
- Less than 0.2
- 0.2 to 0.4
- 0.4 to 0.6
- 0.6 to 0.8
- 0.8 to 1.0
- More than 1.0



Area of Detail Date: 10/25/2019



The user agrees to all Terms of Use set forth by Boulder County. For Terms of Use, please visit: www.bouldercounty.org/mapdisclaimer