

Started October 17, 2020

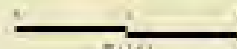
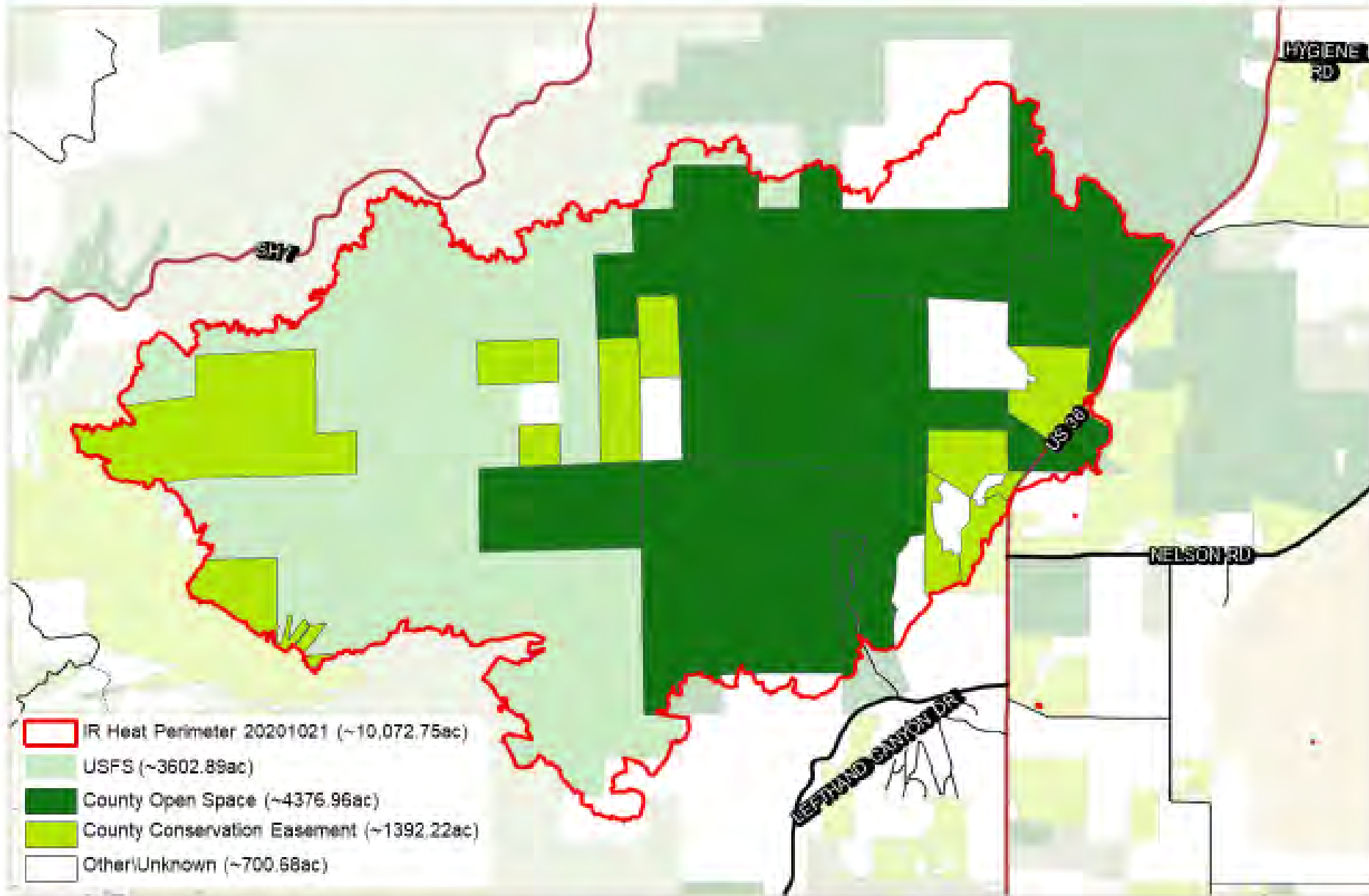
Calwood Fire



Calwood Fire: Burned Parcel Acreage*



Parks &
Open Space

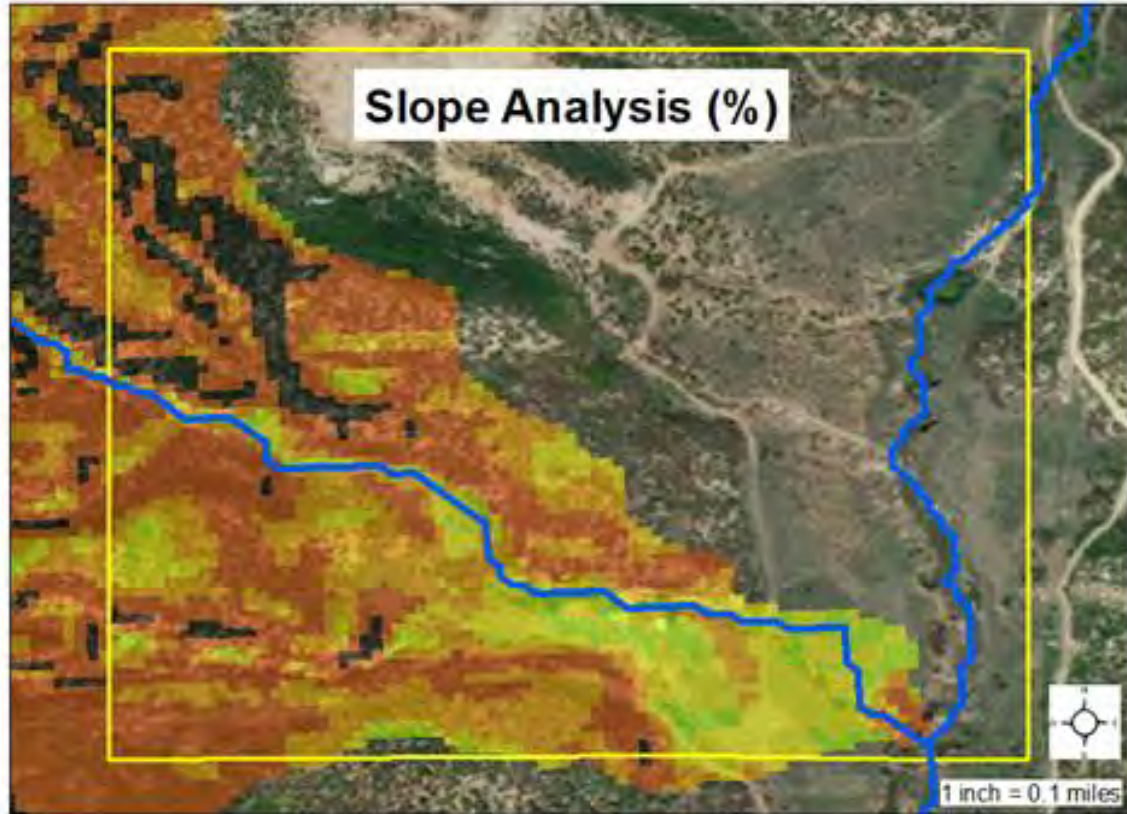




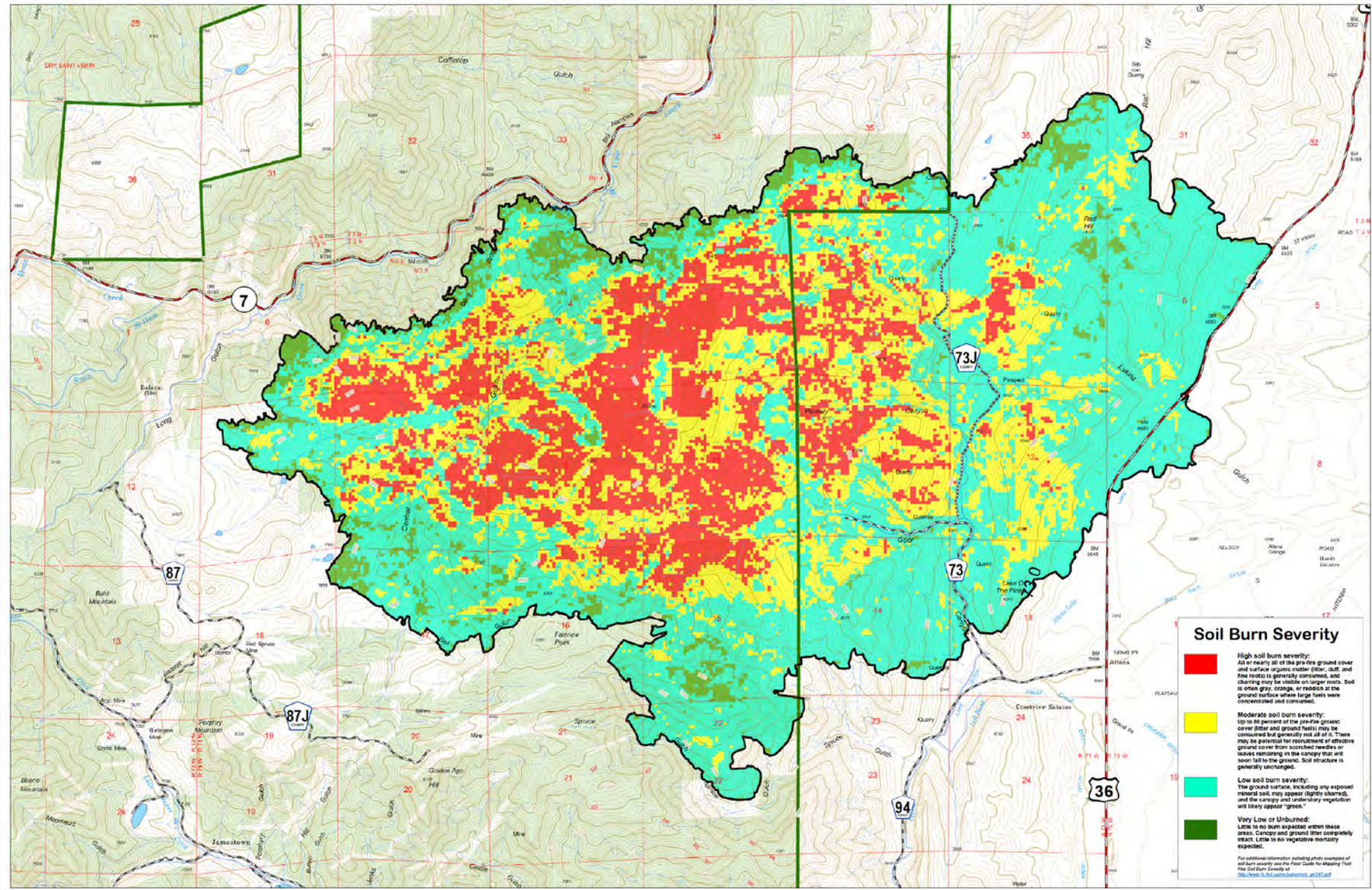




Assessment



- Soil burn severity
- **Slope**
- Watershed
- Values at Risk
 - Water intake
 - Homes
 - Bridges and culvers
 - Roads
 - POS infrastructure



Soil Burn Severity

- **High soil burn severity:** All or nearly all of the pre-fire ground cover and surface organic matter (litter, duff, and fine roots) is generally consumed, and charring may be visible on larger roots. Soil is often gray, crumbly, or radiates at the ground surface where large fuels were concentrated and consumed.
- **Moderate soil burn severity:** Up to 80 percent of the pre-fire ground cover (litter and ground fuels) may be consumed but generally not all of it. There may be potential for recruitment of effective ground cover from sprouted seedlings or leaves remaining in the canopy that will soon fall to the ground. Soil structure is generally unchanged.
- **Low soil burn severity:** The ground surface, including any exposed mineral soil, may appear lightly charred, and the canopy and canopy vegetation will likely appear "green."
- **Very Low or Unburned:** Little to no burn expected within these areas. Canopy and ground litter completely intact. Little to no vegetative mortality expected.

For additional information including photo examples of soil burn severity see the Field Guide for Mapping Fuel Fire Soil Burn Severity at <http://dx.doi.org/10.21961/2015.01.0001>

Calwood Soil Burn Severity

Soil Burn Severity; Imagery Date: 11/02/2020
Roosevelt National Forest
Boulder Ranger District
November 5, 2020

Soil Burn Severity Rating

- Unburned/Very Low
- Low
- Moderate
- High

Map Features:

- Calwood Perimeter
- Administrative Forest Boundary
- US Forest Service Lands
- Non Federal Lands
- State Highway/US Highway
- County Road

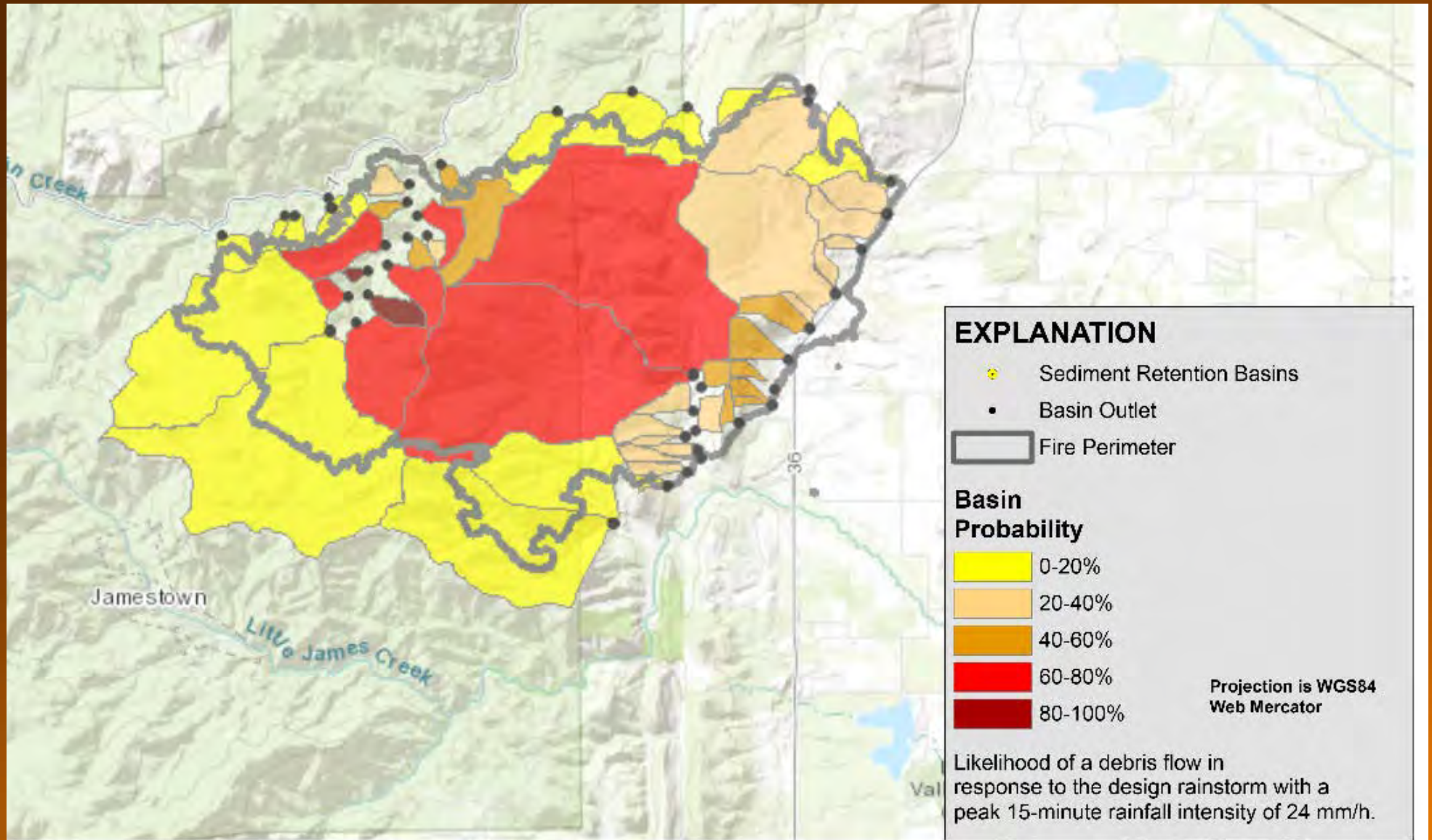
0.5 0.25 0 0.25 0.5 1 Miles

1:12,000

Coordinate System: NAD 1983 UTM Zone 13N
Projection: Transverse Mercator
Datum: North America 1983

Standard Disclaimer:
This product is reproduced from information prepared by the USDA, Forest Service or from other suppliers. The Forest Service cannot assure the reliability or suitability of this information for a particular purpose. The data and product accuracy may vary due to limitations from various sources, including imagery and interpretation, and may not meet National Map Accuracy Standards. The information may be outdated, could be obsolete, and/or otherwise modified without notification. For more information contact: Arapaho and Roosevelt National Forest Supervisors Office at (970) 255-6600. The USDA is an equal opportunity provider and employer.

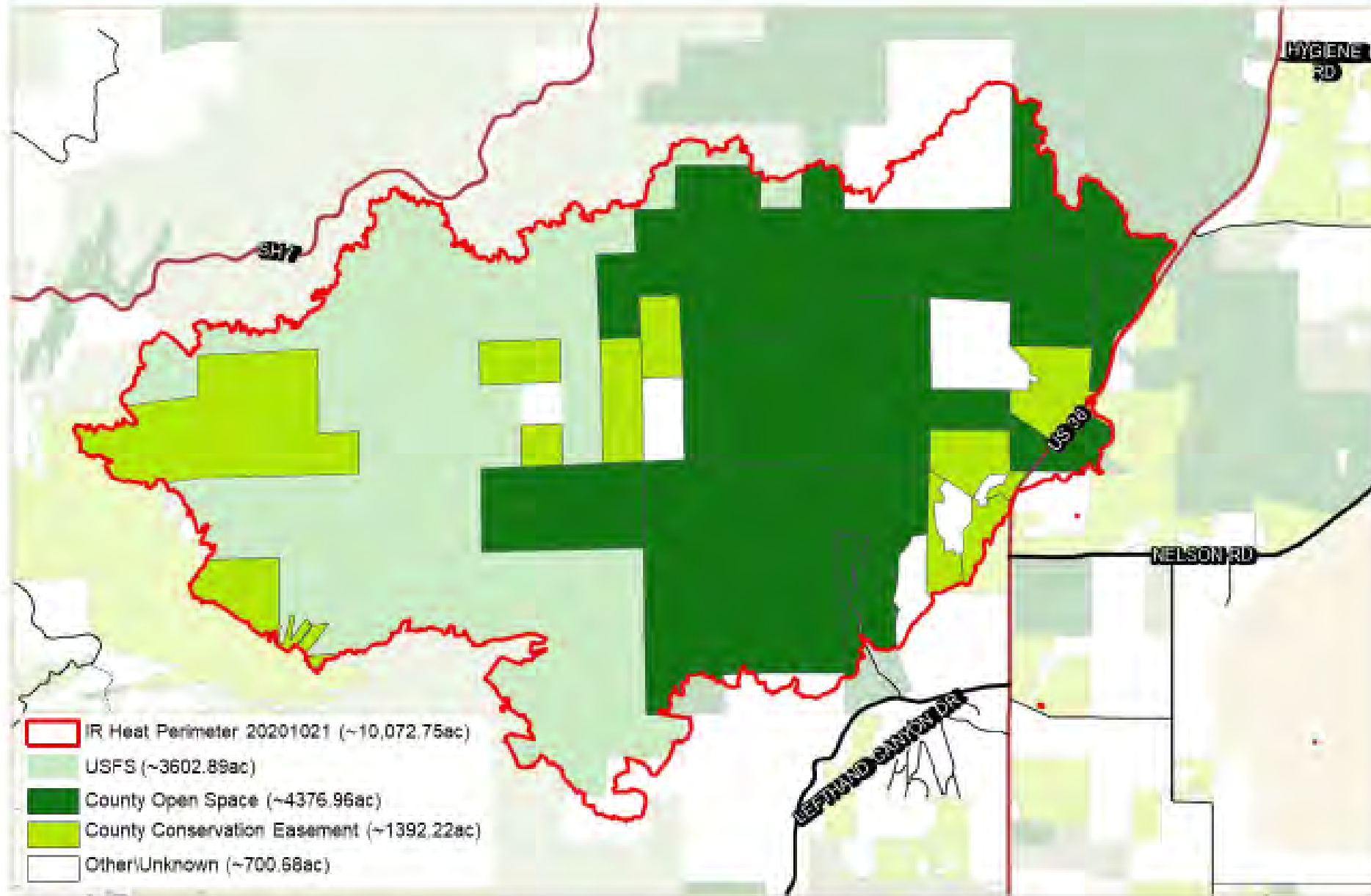
Debris Flow Modeling



Calwood Fire: Burned Parcel Acreage*



Parks &
Open Space



Next Steps

- Burned Area Emergency Response

USFS

POS

Longmont Water

Lefthand Water

Lefthand Watershed Center

Soil Conservation Service



- Natural Resources Conservation Service
Emergency Watershed Protection



Linard Cimermanis



03.24.2011 14:18

Aerial Mulching







04.11.2011 11:15

Next Steps

- Funding
- Work with Private Landowners
- Implement in spring
- Research

