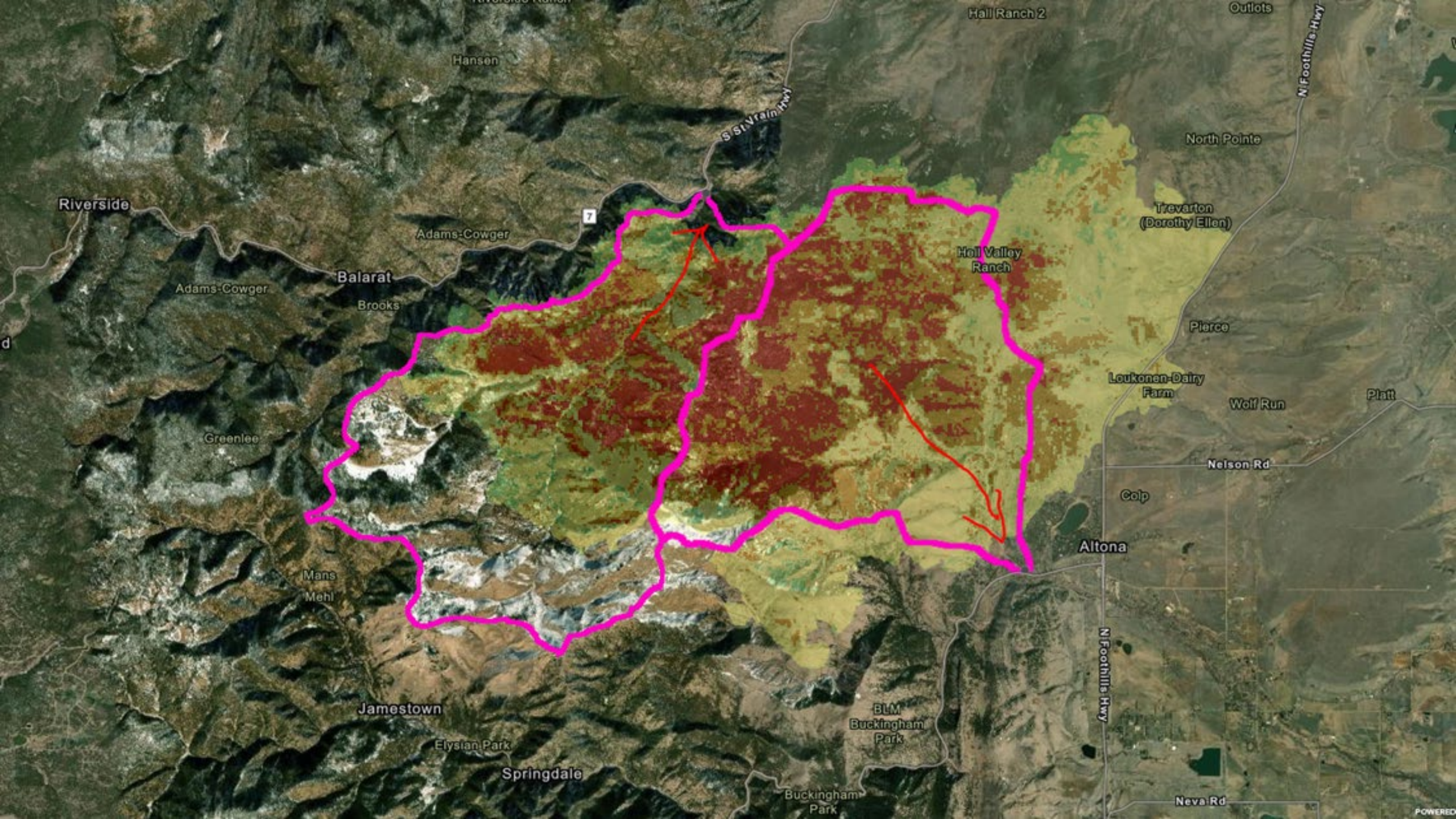




Boulder OEM

Preparedness & Resiliency



Hanson

Hall Ranch 2

Outlots

S St. Vrain Hwy

North Pointe

Riverside

7

Adams-Cowger

Trearton
(Dorothy Ellen)

Adams-Cowger

Balarat

Hol Valley
Ranch

Brooks

Pierce

Loukonen-Dairy
Farm

Greenlee

Wolf Run

Platt

Mans
Mehl

Nelson Rd

Colp

Altona

Jamestown

BLM
Buckingham
Park

N Foothills Hwy

Elysian Park

Springdale

Buckingham
Park

Neva Rd

POWERED



Let's get to the heart of the matter!

- What is the risk?
- How often will this happen?
- Where will it happen?
- How Bad will it be?
- For how long?

We have 11
years of
experience
managing
public safety
and burn areas.



Personal Preparedness Rating

- Do you know the hazards and the risks?
- Do you know ways to get the warning?
- Name ways to get information?
- Do you have Plan? Evac, Communication, Relocation
- Can you be on your own for 24 hours?
- Do you have supplies for 3-5 days? What would it include?
- When helping your neighbors can you protect your head, your eyes, your hands and your feet.
- Find three people who you will share this information with?





What is your resiliency rating?

- Do you have resources and support systems that help with the day to day challenges and the occasional personal hardship?
- Have you been involved in neighborhood activities such as a social event or to address a problem?
- Do you know more than the neighbors next door?
- Do you expect change or fight it?
- Are you properly insured?
- Do you know how to access services and resources? (Codes & Permitting, Social, Political, Response)

Mechanism	Audience	Benefits	Drawbacks
Sirens	People outdoors or in cars	Notifies people recreating in or near waterways, and commuters	May not be heard indoors (particularly in apartment buildings); can be difficult to decipher audio message associated with the alert; depending on location relative to the siren, the sound may not be heard and/or the message can sound distorted
Everbridge (Auto)	Landline phones	The communications centers/dispatch centers receive quarterly updates on landlines from Century Link and Comcast to ensure landline numbers are current	Few residents have landlines; if solicitor-block features are present, the emergency telephone notification will not go through to warn the resident
Everbridge (Opt-In)	Residents and commuters	Notifications received by cell, home, and work phones, text messaging, and email. Can sign up for multiple locations (i.e., work and home)	Requires action from the public to sign up online ; those wary of law enforcement, undocumented residents, and others, may not be inclined to opt-in; if cell phone numbers or locations registered in the system change, then the residents may not get the notifications as expected
Everbridge Keyword Push Notifications	Anyone residing in a flood hazard zone with a cell phone	Anyone with a cell phone can opt-in; those who sign up do not provide any personal information which may be a preferred approach for some; users can opt out anytime via text	Requires action from the public. Users must text the keyword to 888777. Ongoing or annual public education about the keyword will help to encourage new residents to sign up
Integrated Public Alert Warning System (IPAWS) WEA, EAS, NOAA Radio	Anyone with a cell phone	Broadcasts messages to anyone located in the city or a specified polygon with a cell phone. Send messages over radio and television. Sends messages over weather radios.	A cell phone tower must be within the polygon; therefore, the locations of all cell phone towers should be linked into the Everbridge system. Currently IPAWS can only be issued by OEM.
Door-to-Door Notifications	Residents	Experience demonstrates that during an emergency, residents may not get the warning even if all systems are used. First responders will need to deploy to the hazard area to set up roadblocks and go door to door if possible, to warn and assist residents	There will be areas inaccessible to first responders and door-to-door notifications will not be made

Boulder Alert and Warning Terminology

Advisories	Advisories are used to raise awareness of a possible evacuation situation and used in areas where the community is affected. Time frame to issue is three plus hours (3+) or later.
Evacuation Warnings Shelter in Place Warning Climb to Higher Ground Warning	Warnings are used to get residents acting to be ready to evacuate generally within the next one to four hours (1-4).
Evacuation Orders <ul style="list-style-type: none">❑ Shelter in Place Order❑ Climb to Higher Ground Order❑ Missing Endangered Person**❑ All Clear	Orders are used when residents must go immediately and should be issued as soon as possible for residents being immediately affected. If a threat or hazard is imminent the order would ideally be issued within one-to-one point five (1-1.5) hours of the hazardous impacts occurring.

Information Sources

NOAA Weather Radio

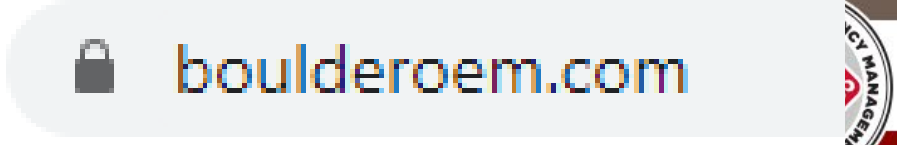
<https://www.boulderoem.com/emergency-status/>

twitter.com/BoulderOEM

www.facebook.com/BoulderOEM

Television and Radio

Smart Phones




Boulder Office of Emergency Management



The Boulder **Office of Emergency Management** (OEM) plans, coordinates and supports a wide-range of activities that help prepare for, respond to, and recover from disasters and large-scale emergencies, while also reducing vulnerabilities to hazards.


Sign-up at www.boco911alert.com to receive messages about imminent threats and hazards by text message,

Emergency Messages Sign-Up




Sign-up at www.boco911alert.com to receive messages about imminent threats and hazards by text message, email, and/or on your cell, home or work phone. For more ...



 05/04/21 – **Emergency Warning Sirens** to be tested today at 10:00 and 19:00

HAZARDS

Boulder County and the incorporated cities within are susceptible to a wide-range of hazards, both natural and man-made.

[Read More](#) 


EMERGENCY PREPAREDNESS

Download the Boulder OEM Emergency Preparedness Guide, which provides a comprehensive view on how to prepare for the possible risks and hazards in our community.

[Read More](#) 

PREPARACIÓN EMERGENCIAS

Descargar el OEM Guía de Preparación para Emergencias de Boulder, que ofrece una visión completa de cómo prepararse para los posibles riesgos y peligros en nuestra comunidad.

[Read More](#) 

BE INFORMED

From emergency alerts that are pushed directly to your phone to up-to-date website of local emergency information, there are many resources to keep you informed before, during and after a disaster.

[Read More](#) 

MAKE A PLAN

Developing an emergency plan is an effective way to assure that everyone that you care for knows how to respond in the event of an emergency. Learn about the hazards and risks in your area, talk to members of your household about what to do in different scenarios.

[Read More](#) 

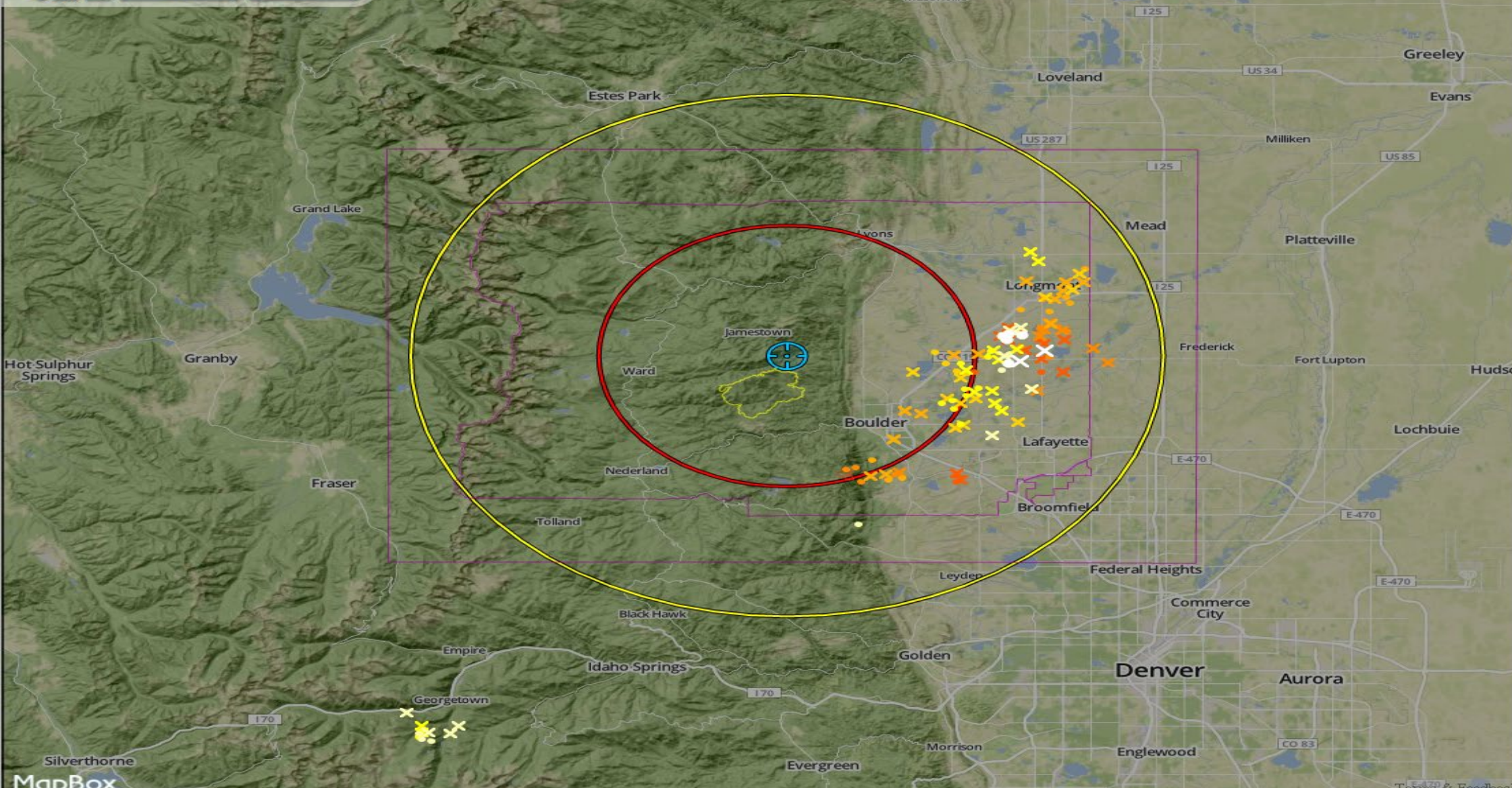
BUILD A KIT

All residents should have some basic supplies on hand in order to survive for at least three days following an emergency. An emergency preparedness kit should be customized to meet the needs of the individual and the family.

[Read More](#) 

US
02:55 PM
My Assets
Lightning
General
Severe
Winter
Tropical
Settings/Support

Show Legends
Map Controls



Asset Monitoring

WATCHES / WARNINGS

Ltg Watch	Weather
EOC	EOC

STRIKE RANGE ALERTS

Range Alert Settings

Time Settings : 30 minute

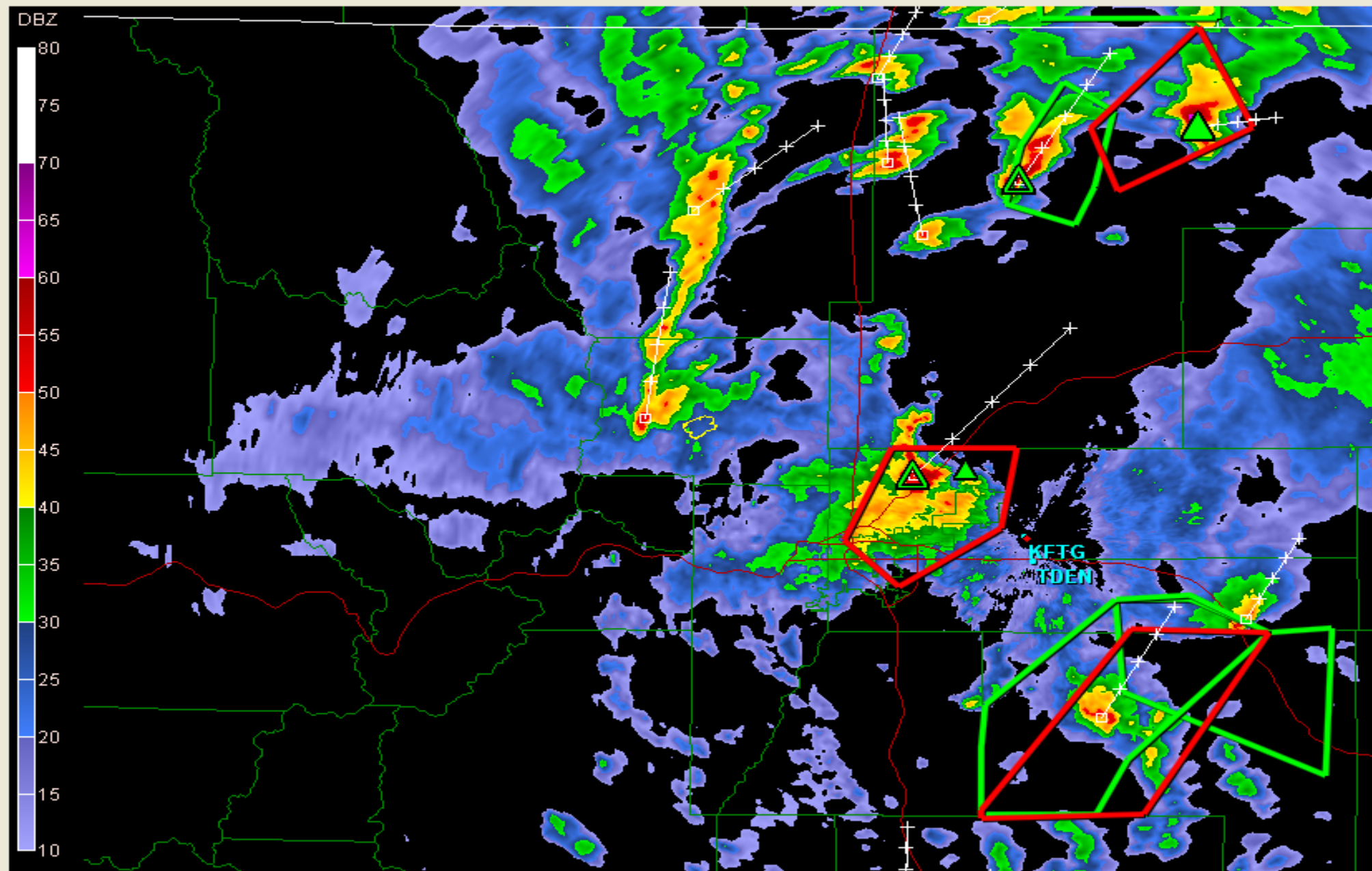
Strike Range Alerting

Asset Name	Inner Count	Outer Count
EOC	0	0

UPDATED: 03:05:15 PM



BR 0.5° | BR 1.5°



Digital Base Reflectivity 0.5°

Site: KFTG
 VST: 07/12/2011 09:49:57 PM
 Prod: 07/12/2011 09:50:01 PM
 VCP: 212
 Tilt: 0.50°

Attributes:

- Storm Tracks - 36
- Hail POSH/POH - 4/3
- Mesocyclones - 0
- TVS / ETVS - 0/0

Warnings:

- Flash Flood - 10
- Thunderstorm - 4
- Tornado - 0

Smoothing

Range Rings

Product Details:

Max: +63 dBZ

URBAN DRAINAGE AND FLOOD CONTROL DISTRICT

15:08:09

Show Radar

Hide Radar

ALERT Rainfall Map, Timestep: 1-hour, Date: 10-23-2012
15:07:46

Auto Refresh Data

UDFCD Extent

Fit to Browser

Map

Satellite

Hybrid

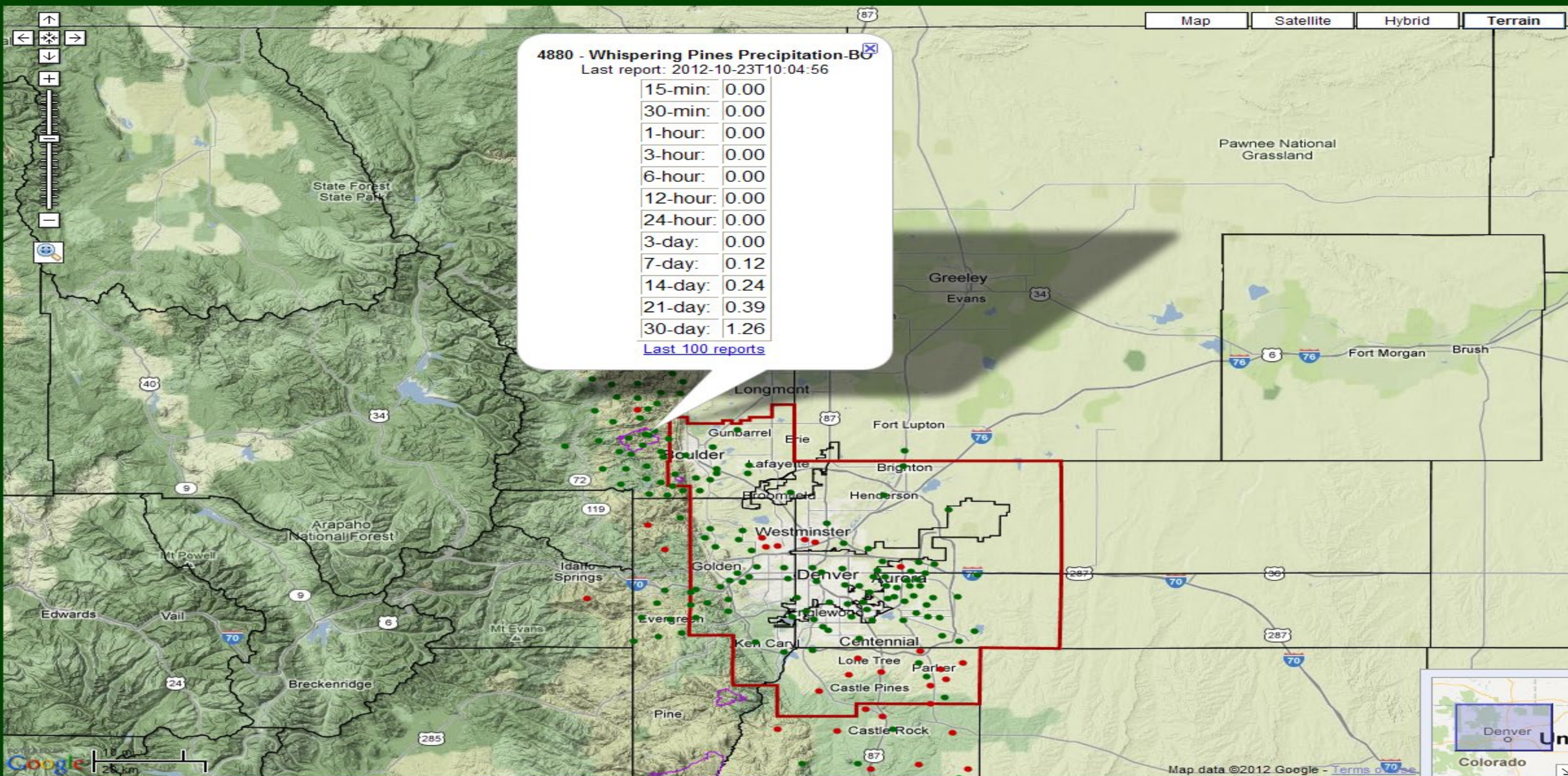
Terrain

4880 - Whispering Pines Precipitation-B0

Last report: 2012-10-23T10:04:56

15-min:	0.00
30-min:	0.00
1-hour:	0.00
3-hour:	0.00
6-hour:	0.00
12-hour:	0.00
24-hour:	0.00
3-day:	0.00
7-day:	0.12
14-day:	0.24
21-day:	0.39
30-day:	1.26

[Last 100 reports](#)



Real-time ALERT | WDT Radar | NWS Radar | Archived ALERT | CoCoRaHS | ALERT/CoCoRaHS | MADIS Wx | MADIS PCP

Select data type: 1-Hour Rainfall | Refresh Rainfall | Current Alarms | Current Discharge | Current Stage | Current Weather | Live Cameras | ending at

Done

Internet

100%

Calwood Burn Scar Preparation

- Bring together the experts.
- Understanding the hazards and risks.
- Engage the first response community to develop response plan.
- Engage community stakeholders and County departments.
- Evaluate systems.
- Deploy mitigation programs and projects.
- Schedule and engage the community.