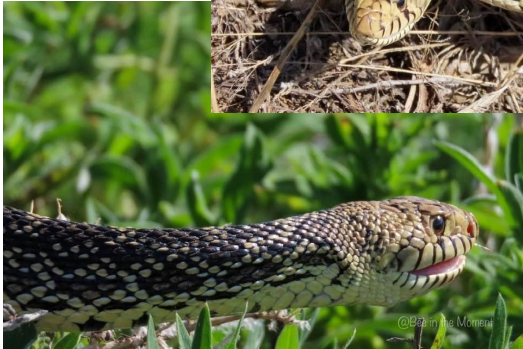


Bullsnake or Gopher Snake



Vibrant coloration,
small head and
bead like eyes.

Non- venomous.



Western or Prairie Rattlesnake



Dull coloration,
small neck with
large “cheeks”
and large multi
colored eyes.
Venomous.

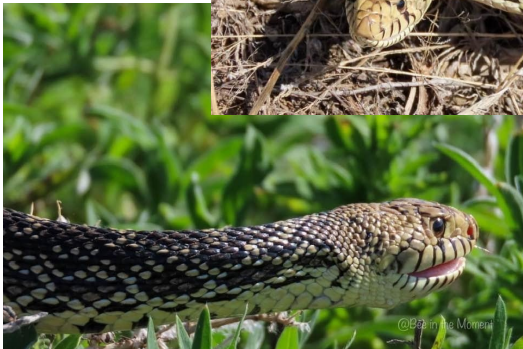


Bullsnake or Gopher Snake



Vibrant coloration,
small head and
bead like eyes.

Non- venomous.



Western or Prairie Rattlesnake



Dull coloration,
small neck with
large “cheeks”
and large multi
colored eyes.
Venomous.



PREVENTION

- Eliminate cool, damp areas where snakes hide. Remove brush and rock piles, keep shrubbery away from foundations, and cut tall grass.
- Control insect and rodent populations (the snakes' primary food source) to force them to seek areas with a larger food supply. Put grains in tightly sealed containers and clean up residual pet food and debris.
- In rattlesnake-infested areas, construct a snakeproof fence around the backyard or play area. Use 36-inch high galvanized hardware cloth with a 1/4-inch mesh and bury it 6 inches deep, slanted outward at a 30-degree angle. Make certain the gate fits tightly and swings into the play area. Keep all vegetation away from the fence to prevent snakes from climbing over it.
- To prevent snakes from entering basements and crawl spaces, seal all openings 1/4 inch or larger with mortar, caulking compound, expanding foam, or 1/8-inch hardware cloth. Check for holes or cracks around doors, windows, water pipes, electrical lines, etc.

For additional information on snakes please visit:

Colorado Parks and Wildlife

<http://cpw.state.co.us>

Colorado State University Extension

<https://extension.colostate.edu/>

To contact Boulder County Animal Control call Dispatch at:

303-441-4444



PREVENTION

- Eliminate cool, damp areas where snakes hide. Remove brush and rock piles, keep shrubbery away from foundations, and cut tall grass.
- Control insect and rodent populations (the snakes' primary food source) to force them to seek areas with a larger food supply. Put grains in tightly sealed containers and clean up residual pet food and debris.
- In rattlesnake-infested areas, construct a snakeproof fence around the backyard or play area. Use 36-inch high galvanized hardware cloth with a 1/4-inch mesh and bury it 6 inches deep, slanted outward at a 30-degree angle. Make certain the gate fits tightly and swings into the play area. Keep all vegetation away from the fence to prevent snakes from climbing over it.
- To prevent snakes from entering basements and crawl spaces, seal all openings 1/4 inch or larger with mortar, caulking compound, expanding foam, or 1/8-inch hardware cloth. Check for holes or cracks around doors, windows, water pipes, electrical lines, etc.

For additional information on snakes please visit:

Colorado Parks and Wildlife

<http://cpw.state.co.us>

Colorado State University Extension

<https://extension.colostate.edu/>

To contact Boulder County Animal Control call Dispatch at:

303-441-4444

