

All Injury-Fatality Crashes in the Greater Ward Area, 2009 to 2018



Source: 10 Adventures

The document reviews all Injury-Fatality crashes that occurred in the Greater Ward area, from 2009 to 2018. Injury-Fatality Crashes incorporate crashes that range from injury level 2, or complaint of injury, to injury level 5, or a fatal crash.

The first map in the document displays all Injury-Fatality crashes that occurred in the Ward area from 2009 to 2018, by severity level. 92% of the Injury-Fatality crashes (506 of 548 total) in the area shown on the map did not take place at an intersection. The next map displays all Injury-Fatality crashes from 2009 to 2018, by crash type. Single-vehicle crashes are the most common crash type, and rear end and sideswipe opposite direction crashes rank as the next most frequent crash types.

Crash Severity Levels

The crash severity of a crash is determined by law enforcement and recorded as part of the tabular data on an Accident Report Form. There are five levels of crash severity, determined by the most serious injury resulting from a crash:

Injury Level 1= Property Damage Only

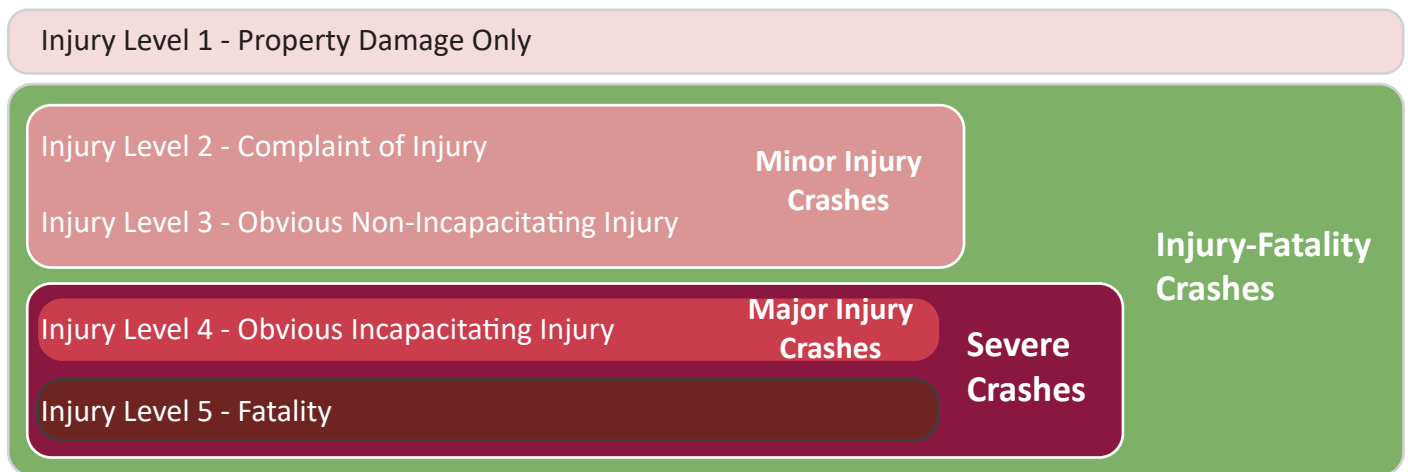
Injury Level 2= Complaint of Injury

Injury Level 3= Obvious Non-Incapacitating Injury

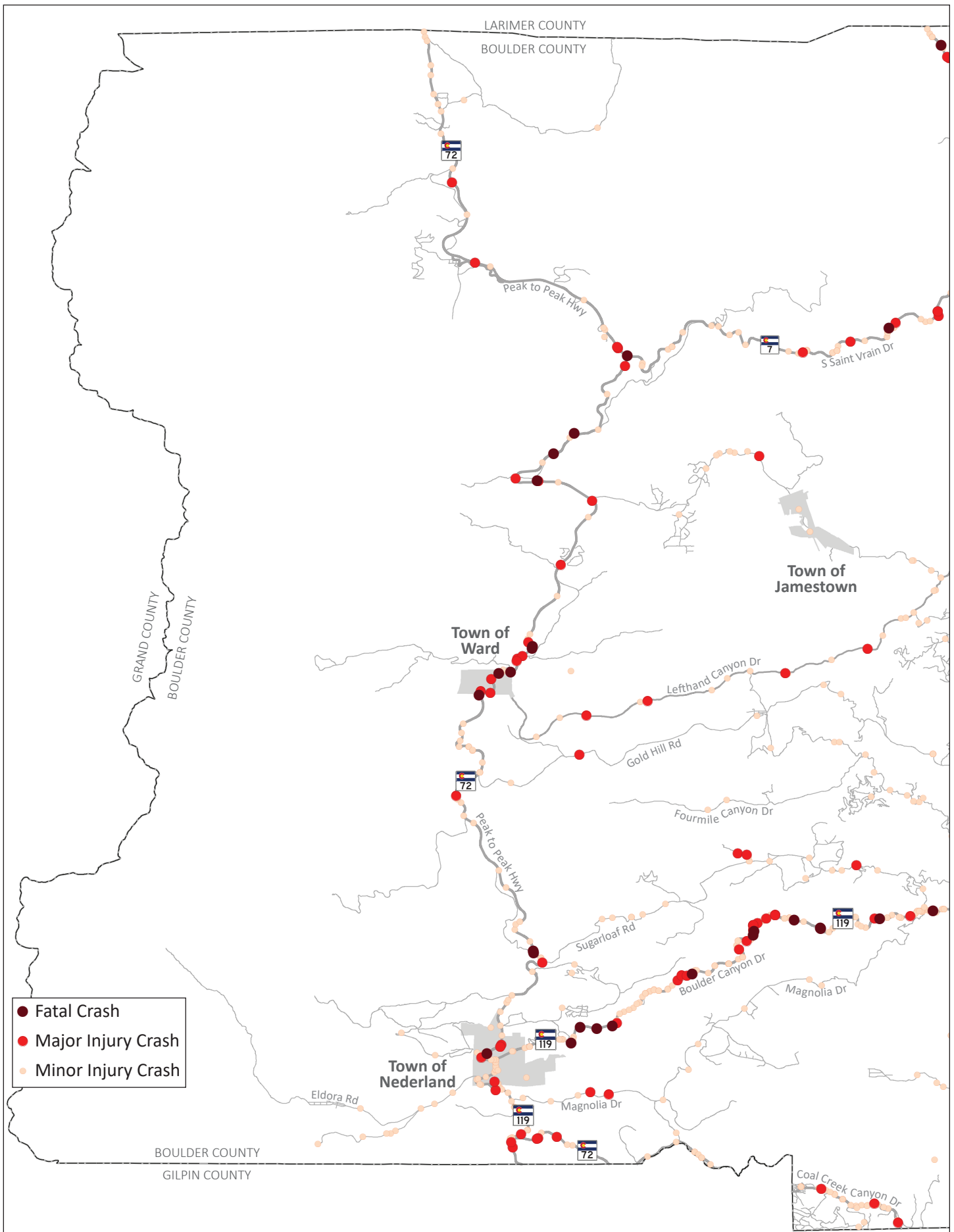
Injury Level 4= Obvious Incapacitating Injury

Injury Level 5= Fatality

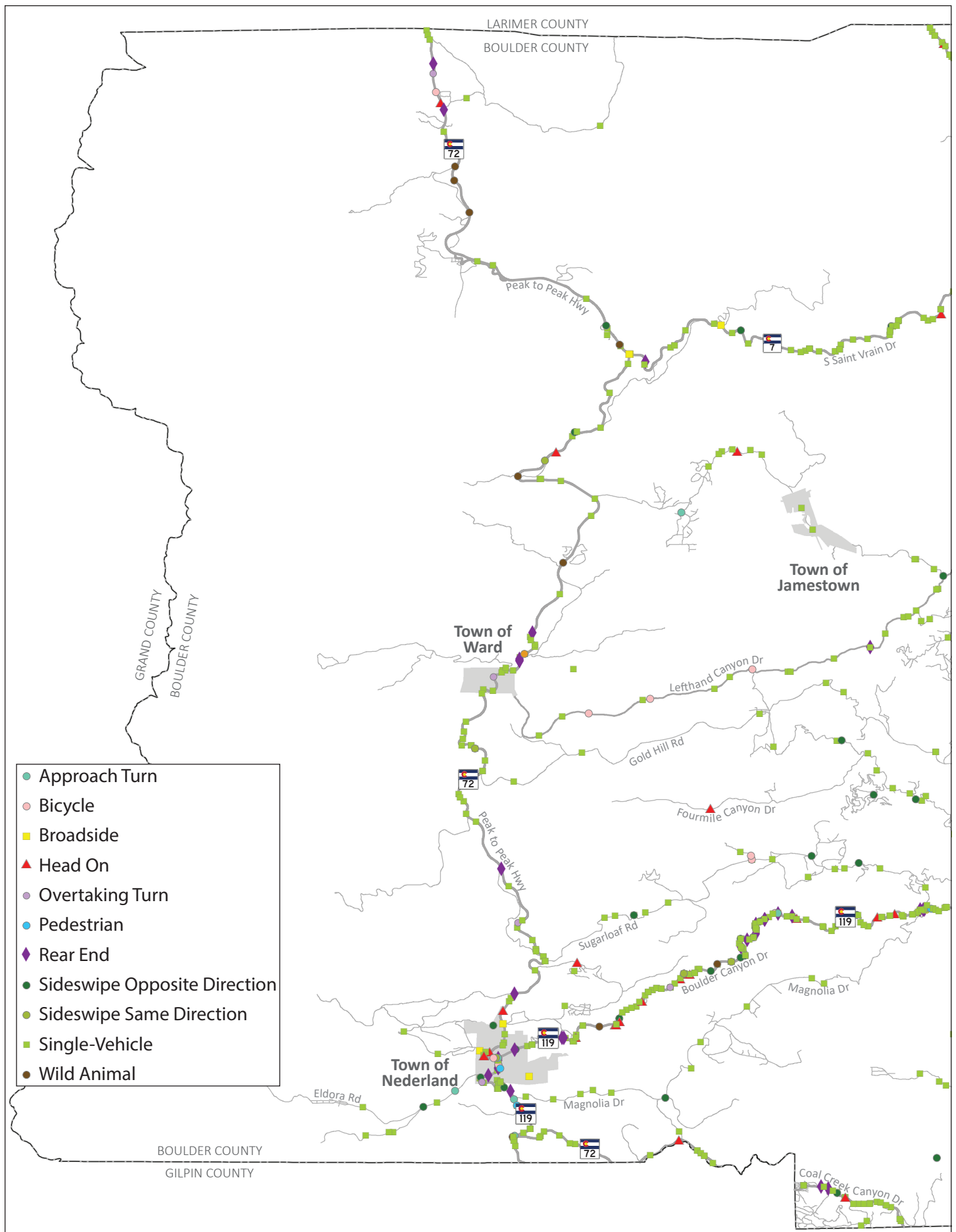
Throughout the document, we will refer to four levels of crash severity:



All Injury-Fatality Crashes in Greater Ward Area, 2009 to 2018, by Severity



All Injury-Fatality Crashes in Greater Ward Area, 2009 to 2018, by Crash Type



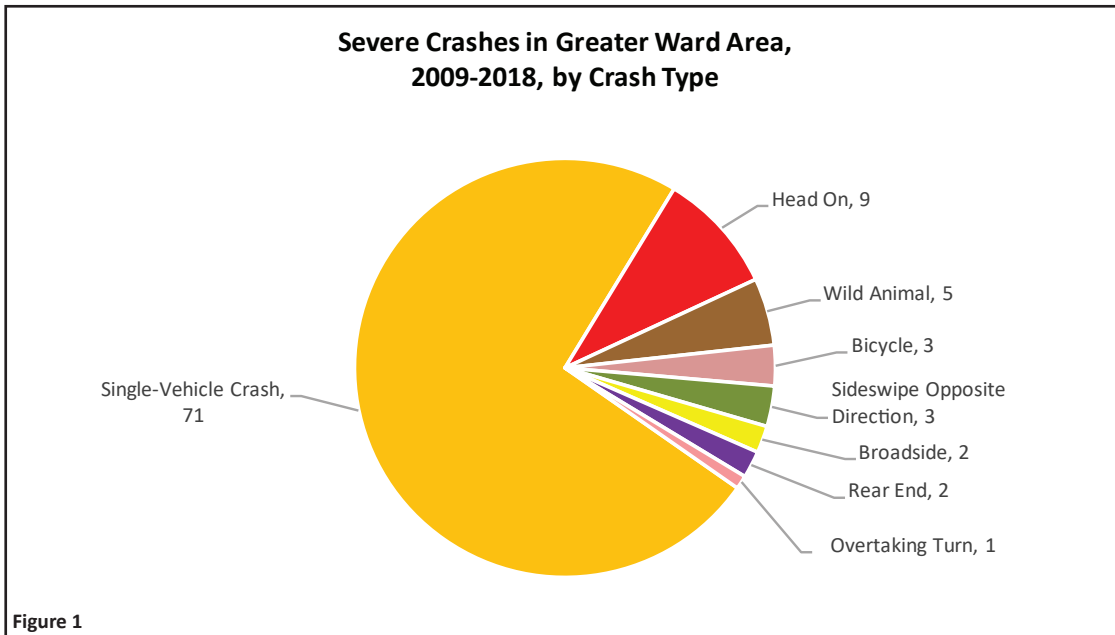


Figure 1 displays all Severe Crashes in the Greater Ward area shown on the maps previously displayed from 2009 to 2018. Of the 96 Severe crashes that occurred, 74% (71 of 96 total) are single-vehicle crashes. The remaining Severe crashes are a handful of other crash types, including head on and wild animal crashes.

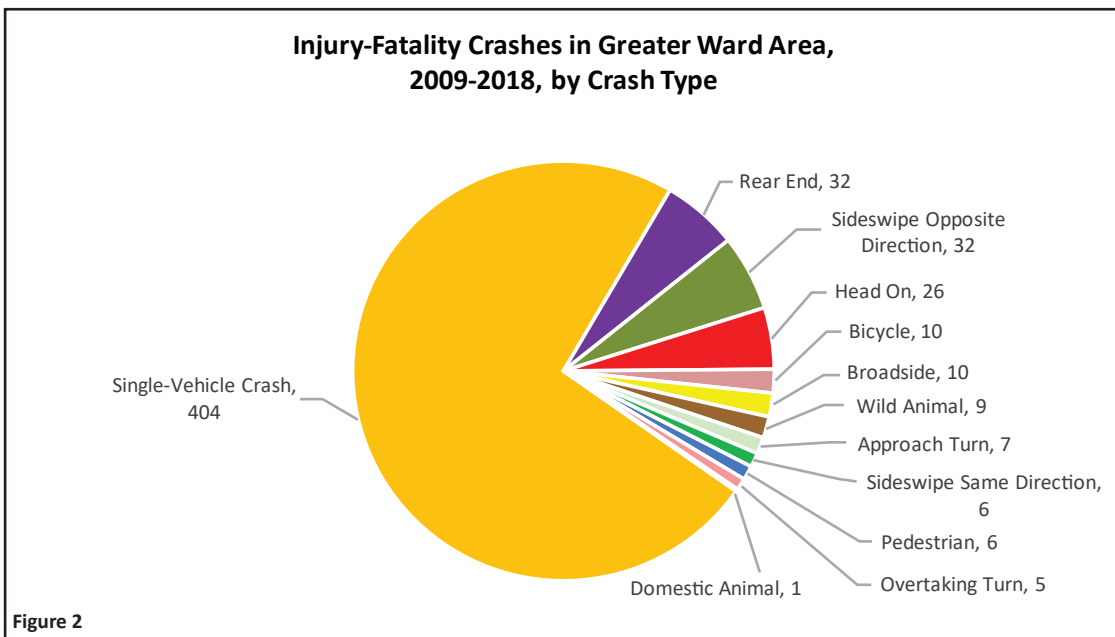


Figure 2 displays all Injury-Fatality Crashes in the Greater Ward area shown on the maps. 74% of the Injury-Fatality crashes are single-vehicle crashes (404 of 548 total). Rear end and sideswipe opposite direction crashes also accounted for 12% of all the Injury-Fatality crashes (64 of 548 total) in the Ward area from 2009 to 2018.