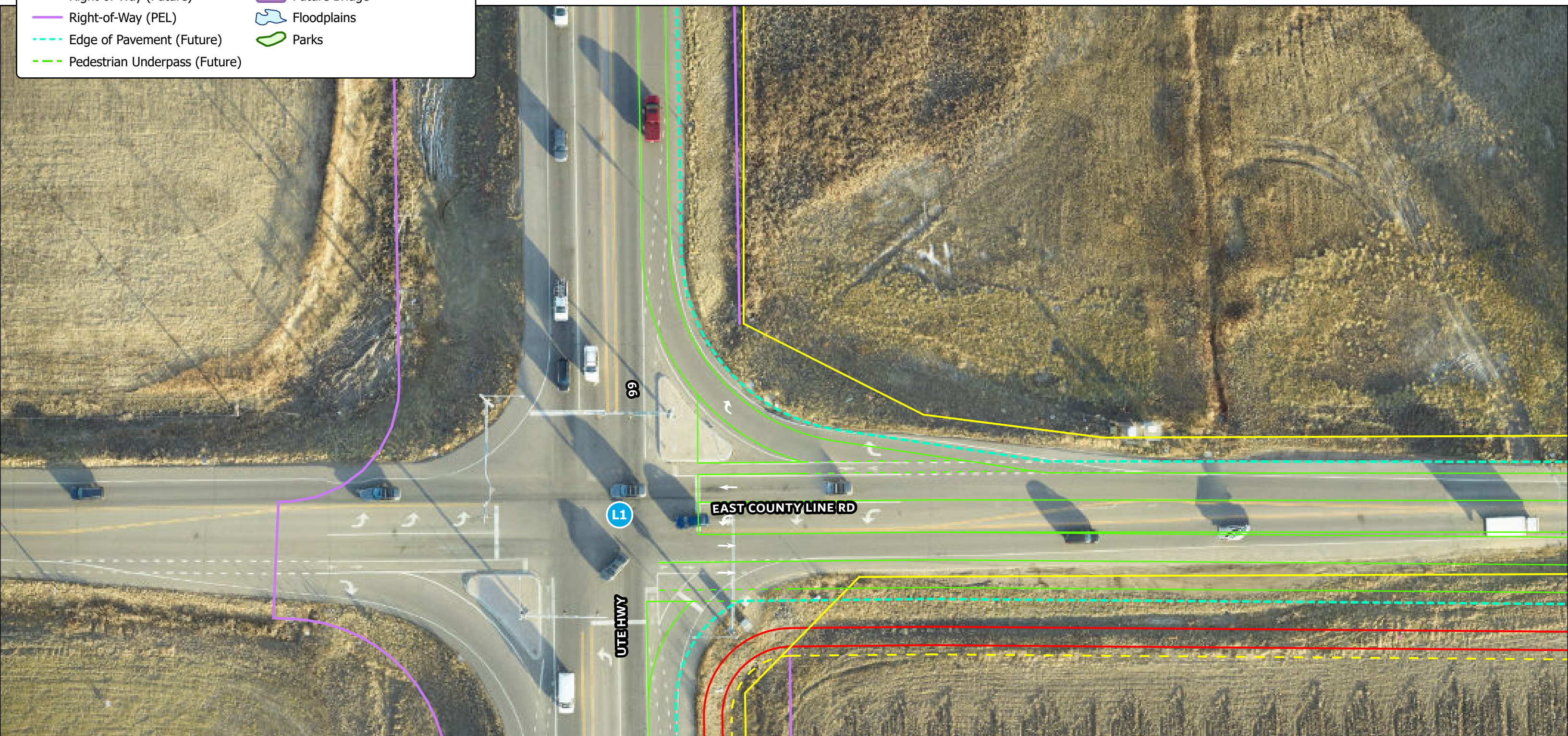
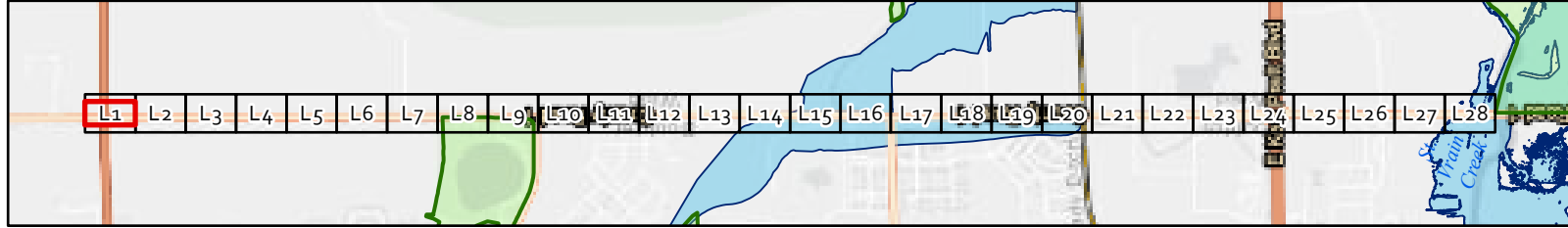


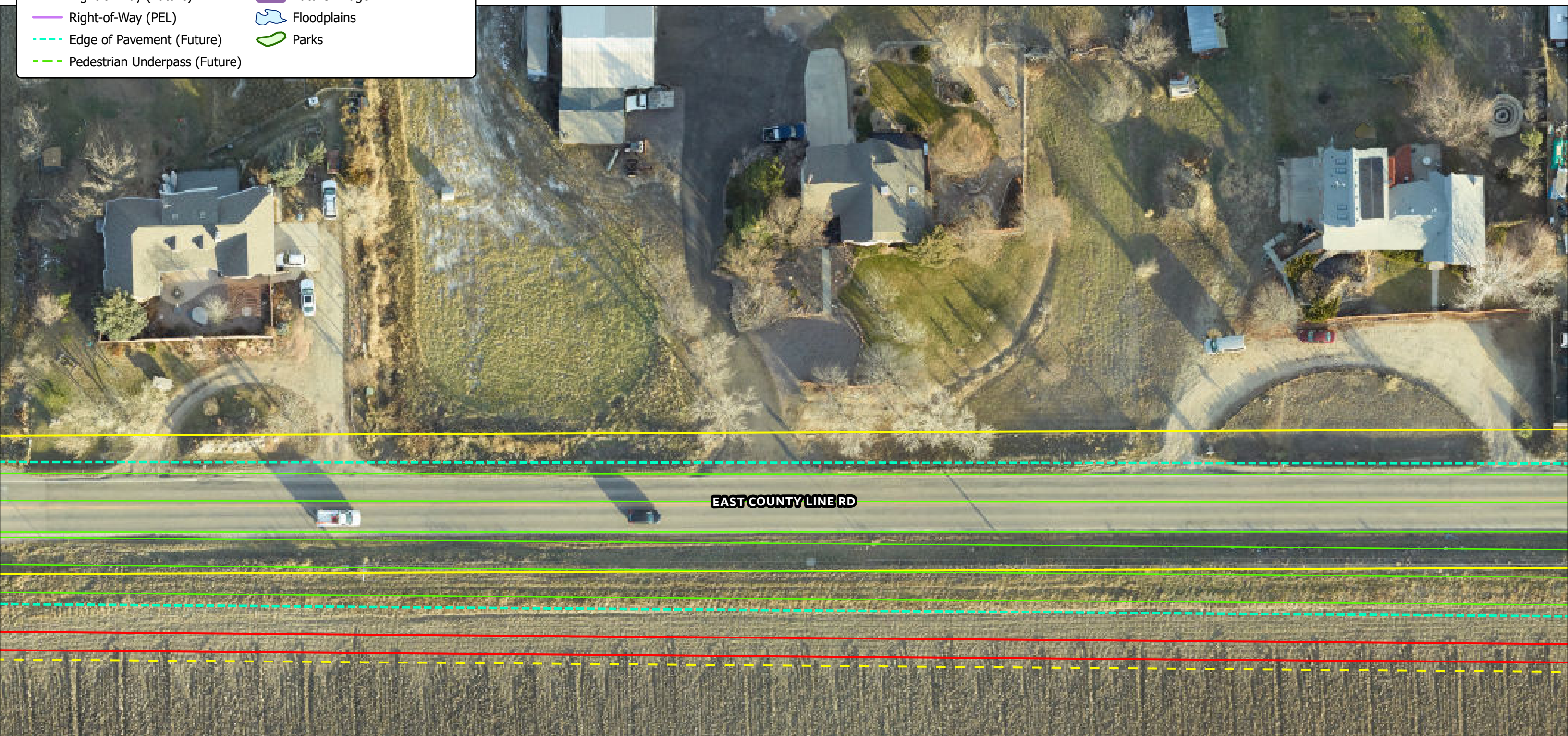
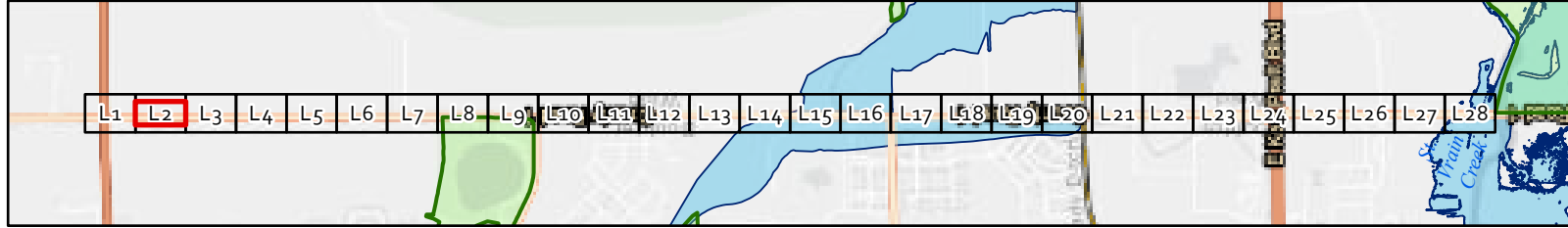
Existing & Proposed ROW Elements

- Striping (Proposed)
- Roundabout Interiors (Future)
- Right-of-Way (Existing)
- - - Right-of-Way (Future)
- Right-of-Way (PEL)
- - - Edge of Pavement (Future)
- - - Pedestrian Underpass (Future)
- ~ Drainage (Future)
- ~ Creek Realignment (Proposed)
- ~ Multi-Use Path (Future)
- ▭ Future Bridge
- ▭ Floodplains
- ▭ Parks



Existing & Proposed ROW Elements

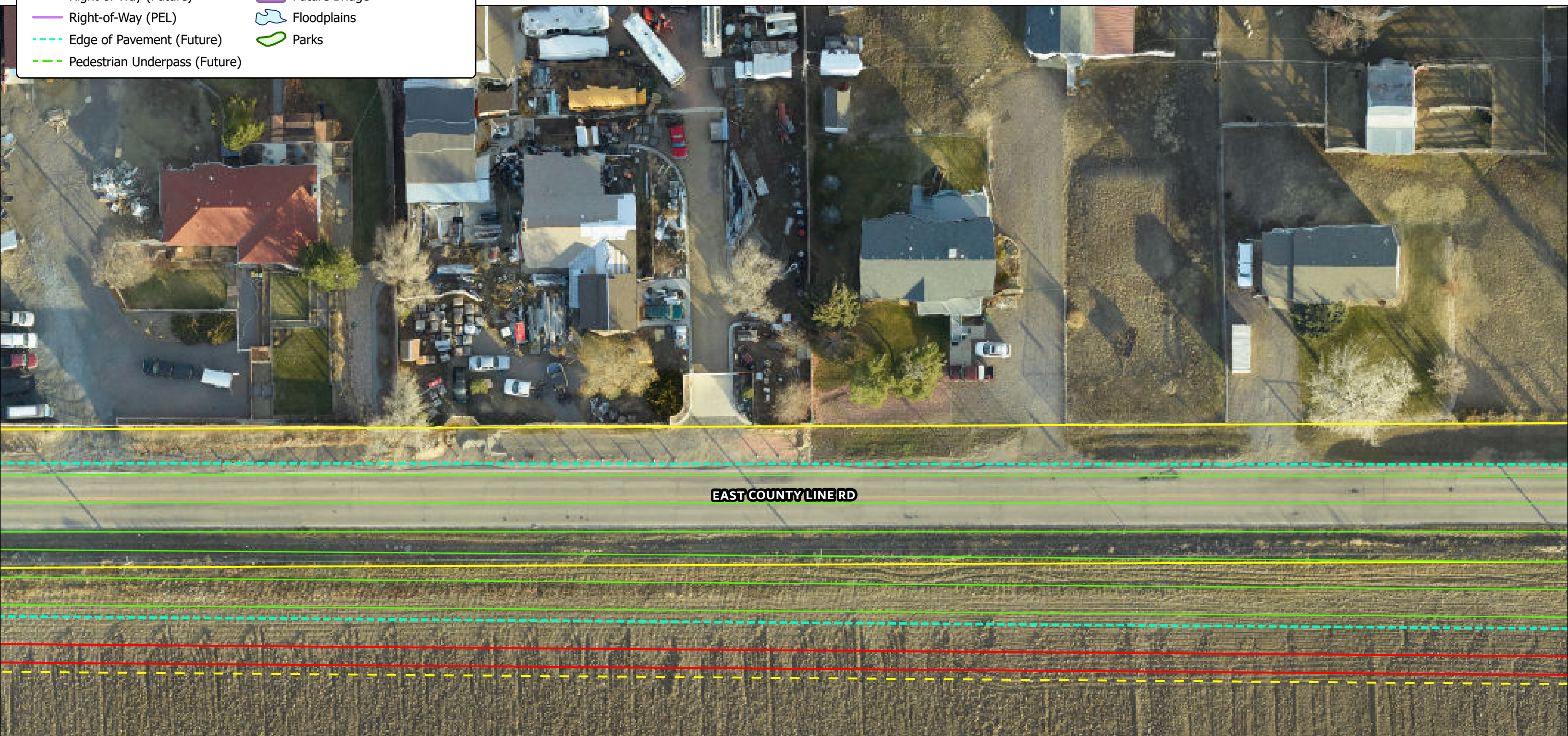
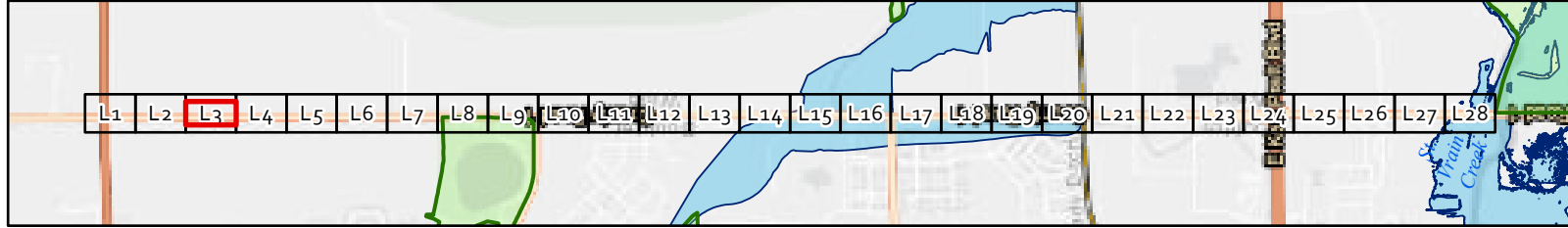
- Striping (Proposed)
- Roundabout Interiors (Future)
- Right-of-Way (Existing)
- - - Right-of-Way (Future)
- Right-of-Way (PEL)
- - - Edge of Pavement (Future)
- - - Pedestrian Underpass (Future)
- ~ ~ ~ Drainage (Future)
- ~ ~ ~ Creek Realignment (Proposed)
- ~ ~ ~ Multi-Use Path (Future)
- ▭ Future Bridge
- ~ ~ ~ Floodplains
- ~ ~ ~ Parks



EAST COUNTY LINE RD

Existing & Proposed ROW Elements

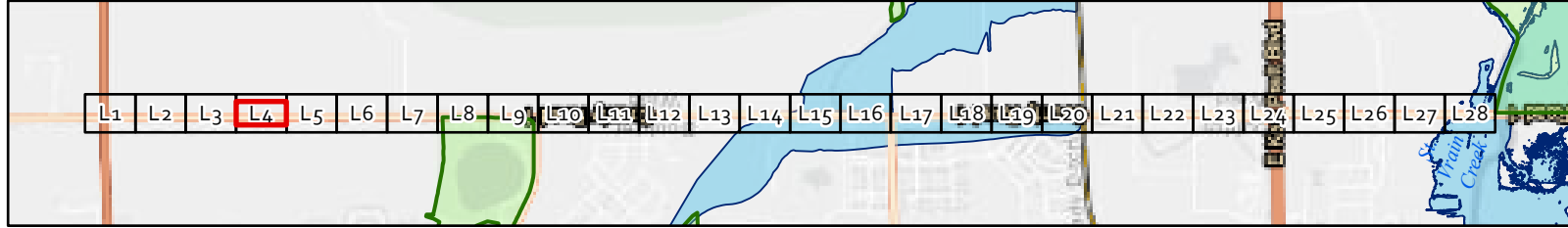
- Striping (Proposed)
- Roundabout Interiors (Future)
- Right-of-Way (Existing)
- Right-of-Way (Future)
- Right-of-Way (PEL)
- - - Edge of Pavement (Future)
- - - Pedestrian Underpass (Future)
- ~ Drainage (Future)
- ~ Creek Realignment (Proposed)
- ~ Multi-Use Path (Future)
- ▭ Future Bridge
- ▭ Floodplains
- ▭ Parks



EAST COUNTY LINE RD

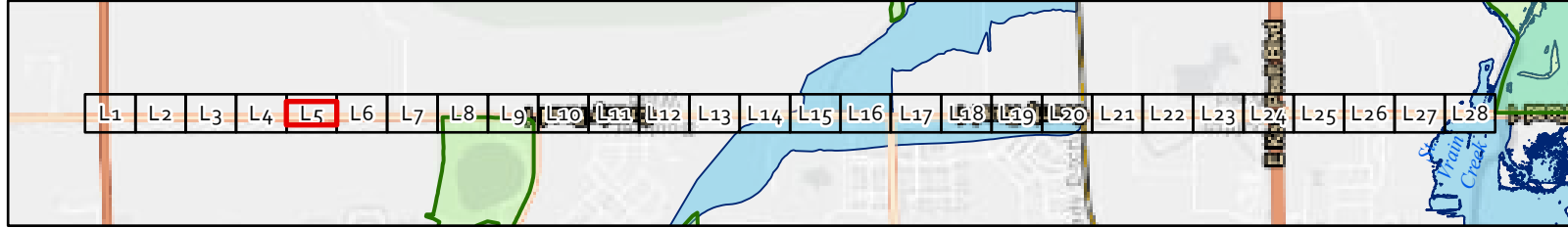
Existing & Proposed ROW Elements

- Striping (Proposed)
- Roundabout Interiors (Future)
- Right-of-Way (Existing)
- - - Right-of-Way (Future)
- Right-of-Way (PEL)
- - - Edge of Pavement (Future)
- - - Pedestrian Underpass (Future)
- ~ Drainage (Future)
- ~ Creek Realignment (Proposed)
- ~ Multi-Use Path (Future)
- ▭ Future Bridge
- ~ Floodplains
- ~ Parks



Existing & Proposed ROW Elements

- Striping (Proposed)
- Roundabout Interiors (Future)
- Right-of-Way (Existing)
- Right-of-Way (Future)
- Right-of-Way (PEL)
- - - Edge of Pavement (Future)
- - - Pedestrian Underpass (Future)
- ~ Drainage (Future)
- ~ Creek Realignment (Proposed)
- ~ Multi-Use Path (Future)
- ▭ Future Bridge
- ~ Floodplains
- ~ Parks



EAST COUNTY LINE RD

L5 East County Line Road Master Plan

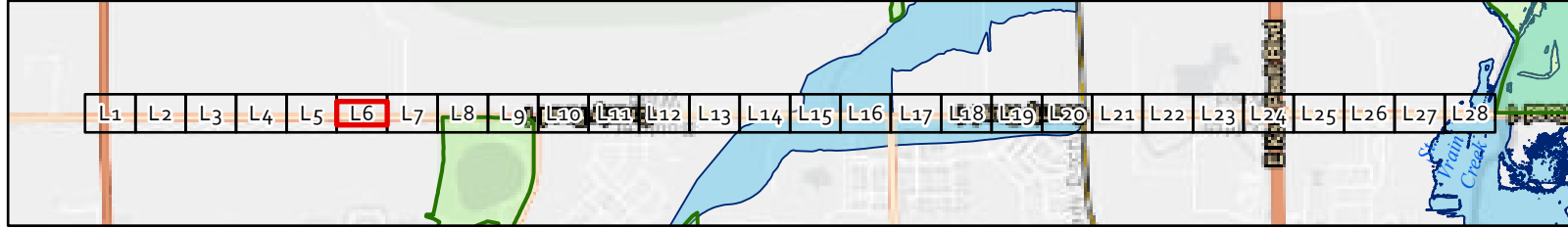
THE LANGDON GROUP

GATEWAY MAPPING INC.

OTHER J-U-B COMPANIES

Existing & Proposed ROW Elements

- Striping (Proposed)
- Roundabout Interiors (Future)
- Right-of-Way (Existing)
- - - Right-of-Way (Future)
- Right-of-Way (PEL)
- - - Edge of Pavement (Future)
- - - Pedestrian Underpass (Future)
- ~ ~ ~ Drainage (Future)
- ~ ~ ~ Creek Realignment (Proposed)
- ~ ~ ~ Multi-Use Path (Future)
- ▭ Future Bridge
- ~ ~ ~ Floodplains
- ◊ Parks



L6 East County Line Road Master Plan





THE LANGDON GROUP



GATEWAY MAPPING INC.

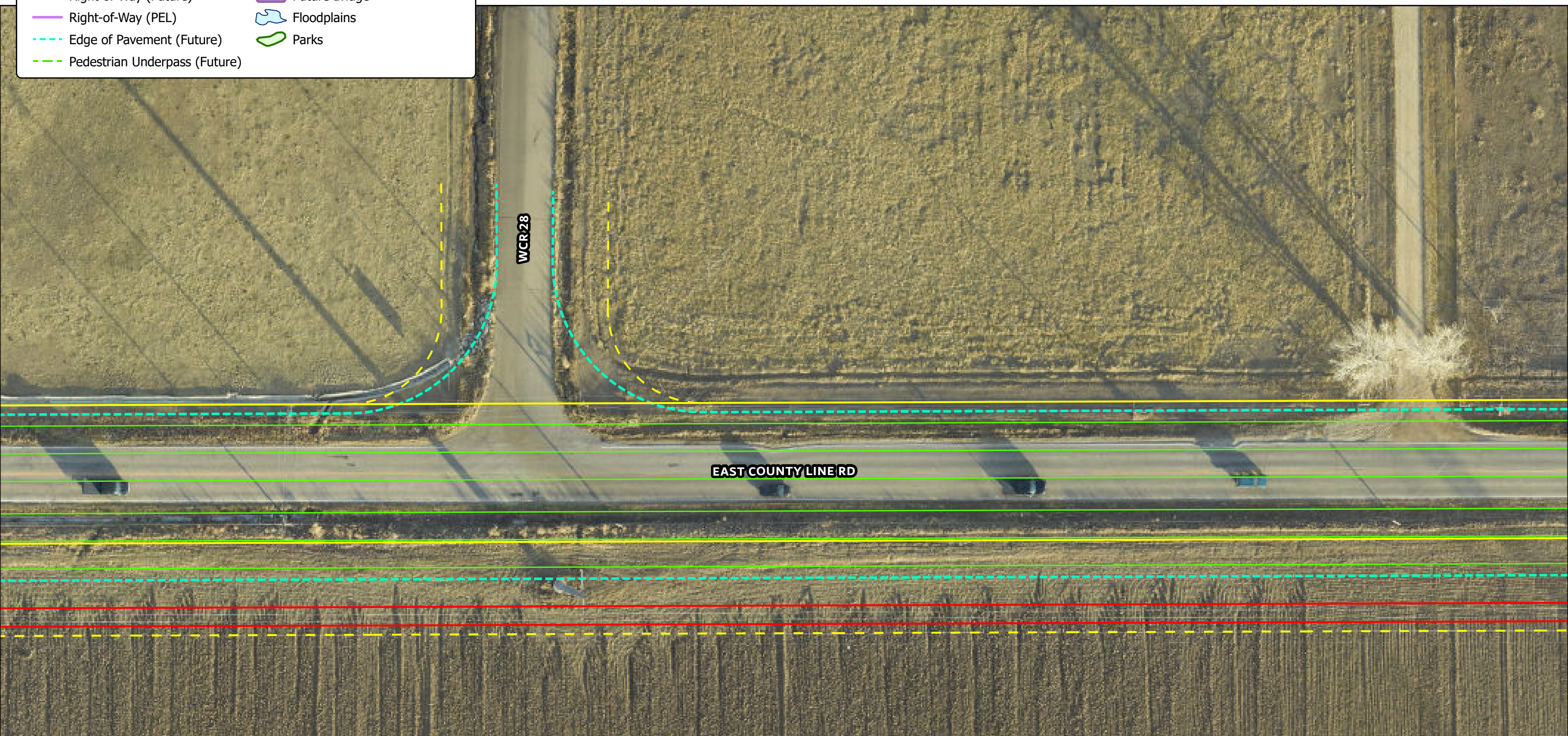
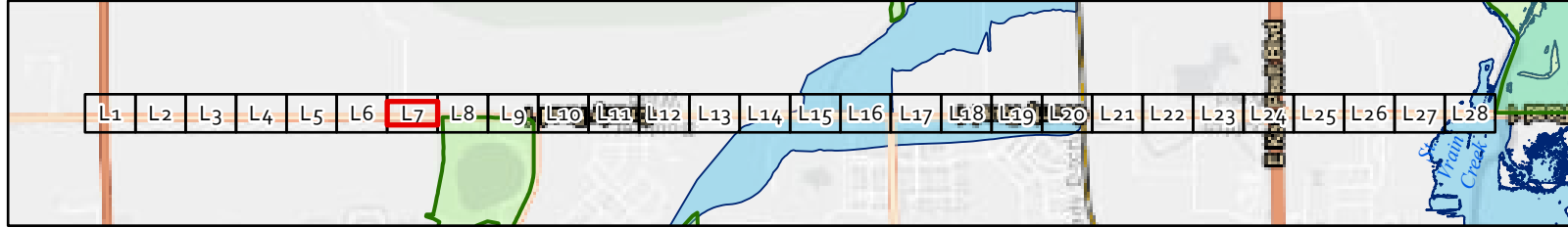
OTHER J-U-B COMPANIES





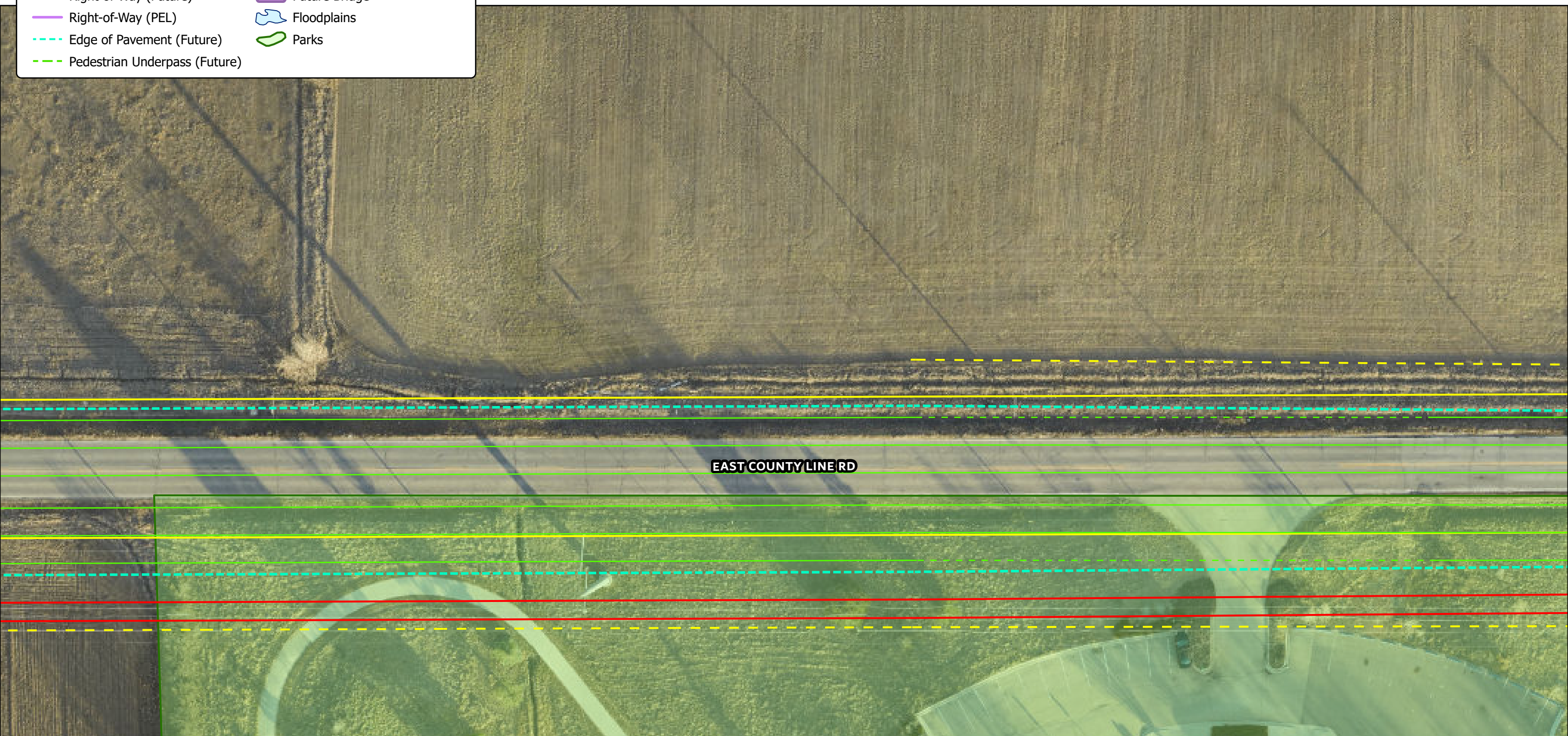
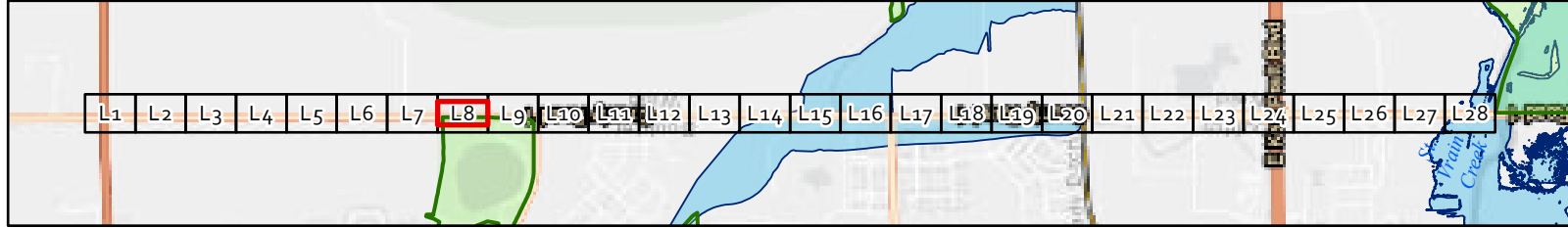
Existing & Proposed ROW Elements

- Striping (Proposed)
- Roundabout Interiors (Future)
- Right-of-Way (Existing)
- - - Right-of-Way (Future)
- Right-of-Way (PEL)
- - - Edge of Pavement (Future)
- - - Pedestrian Underpass (Future)
- - - Drainage (Future)
- ~ Creek Realignment (Proposed)
- ~ Multi-Use Path (Future)
- ▭ Future Bridge
- ▭ Floodplains
- ▭ Parks



Existing & Proposed ROW Elements

- Striping (Proposed)
- Roundabout Interiors (Future)
- Right-of-Way (Existing)
- Right-of-Way (Future)
- Right-of-Way (PEL)
- Edge of Pavement (Future)
- Pedestrian Underpass (Future)
- Drainage (Future)
- Creek Realignment (Proposed)
- Multi-Use Path (Future)
- Future Bridge
- Floodplains
- Parks



EAST COUNTY LINE RD

L8 East County Line Road Master Plan







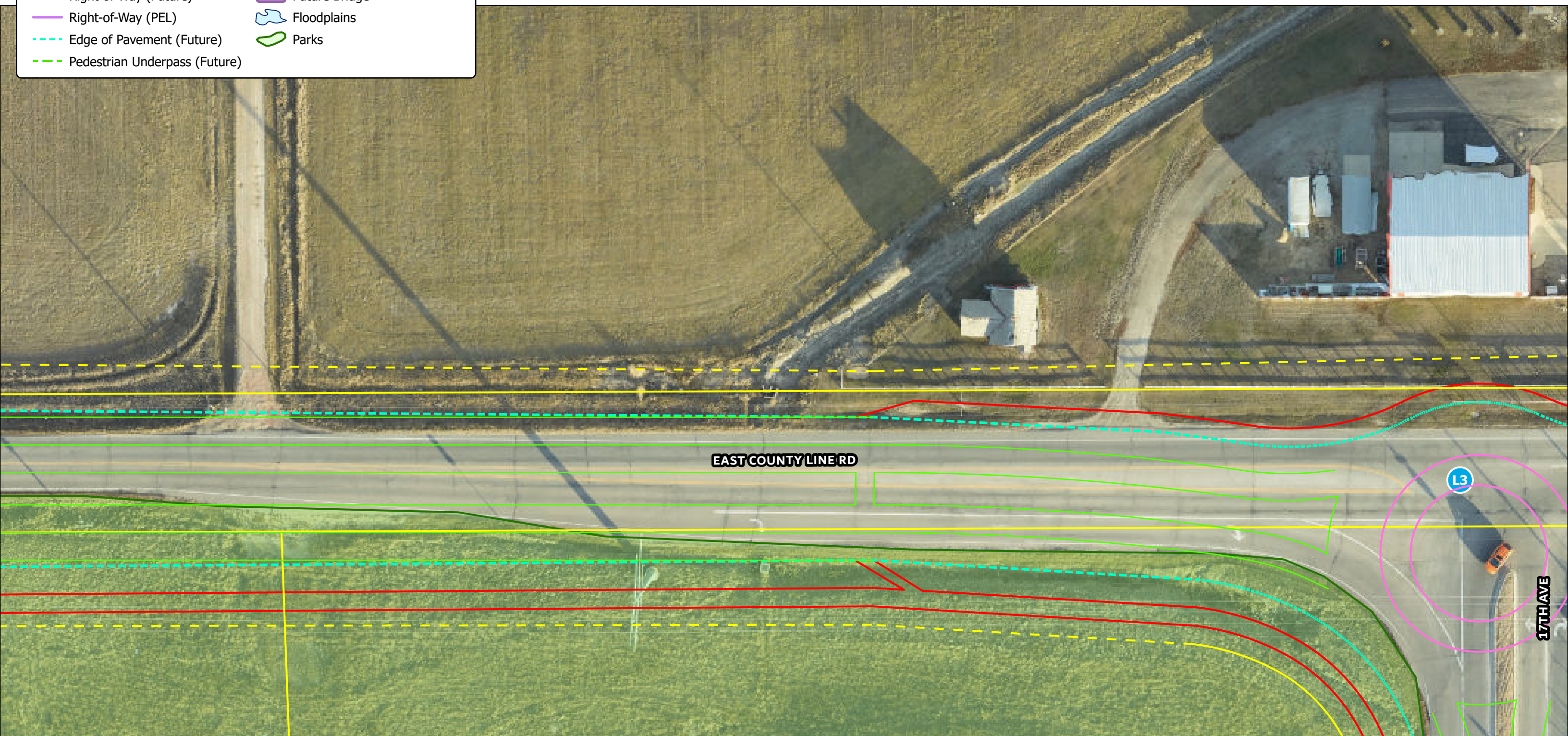
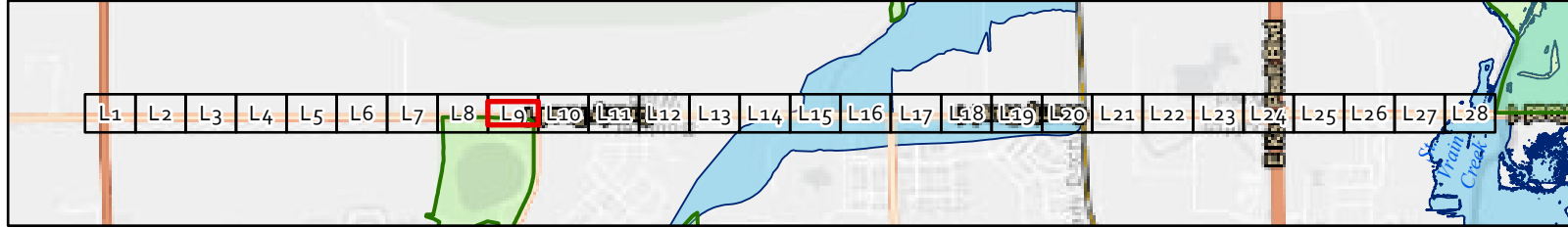
OTHER J-U-B COMPANIES





Existing & Proposed ROW Elements

- Striping (Proposed)
- Roundabout Interiors (Future)
- Right-of-Way (Existing)
- Right-of-Way (Future)
- Right-of-Way (PEL)
- - - Edge of Pavement (Future)
- - - Pedestrian Underpass (Future)
- ~ Drainage (Future)
- ~ Creek Realignment (Proposed)
- ~ Multi-Use Path (Future)
- ▭ Future Bridge
- ~ Floodplains
- Parks



L9 East County Line Road Master Plan

THE LANGDON GROUP

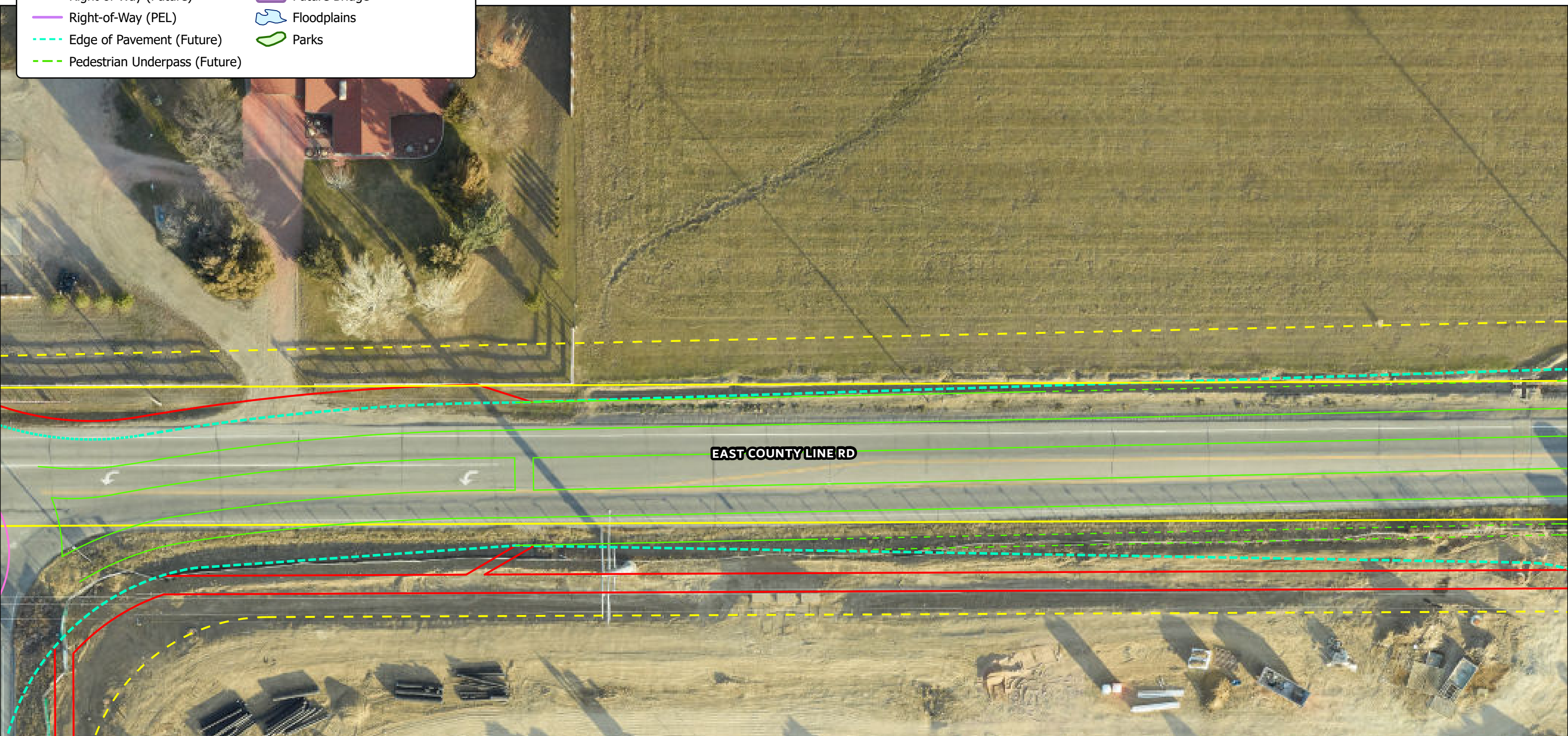
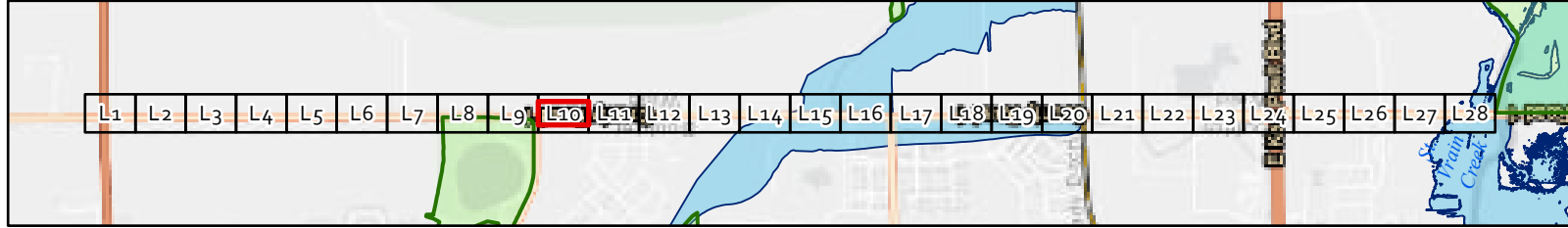
GATEWAY MAPPING INC.

OTHER J-U-B COMPANIES

0 20 40
Feet

Existing & Proposed ROW Elements

- Striping (Proposed)
- Roundabout Interiors (Future)
- Right-of-Way (Existing)
- Right-of-Way (Future)
- Right-of-Way (PEL)
- - - Edge of Pavement (Future)
- - - Pedestrian Underpass (Future)
- ⋯ Drainage (Future)
- ~ Creek Realignment (Proposed)
- ~ Multi-Use Path (Future)
- ▭ Future Bridge
- ⬭ Floodplains
- ⬭ Parks



L10 East County Line Road Master Plan



J-U-B



THE LANGDON GROUP



GATEWAY MAPPING INC.

OTHER J-U-B COMPANIES

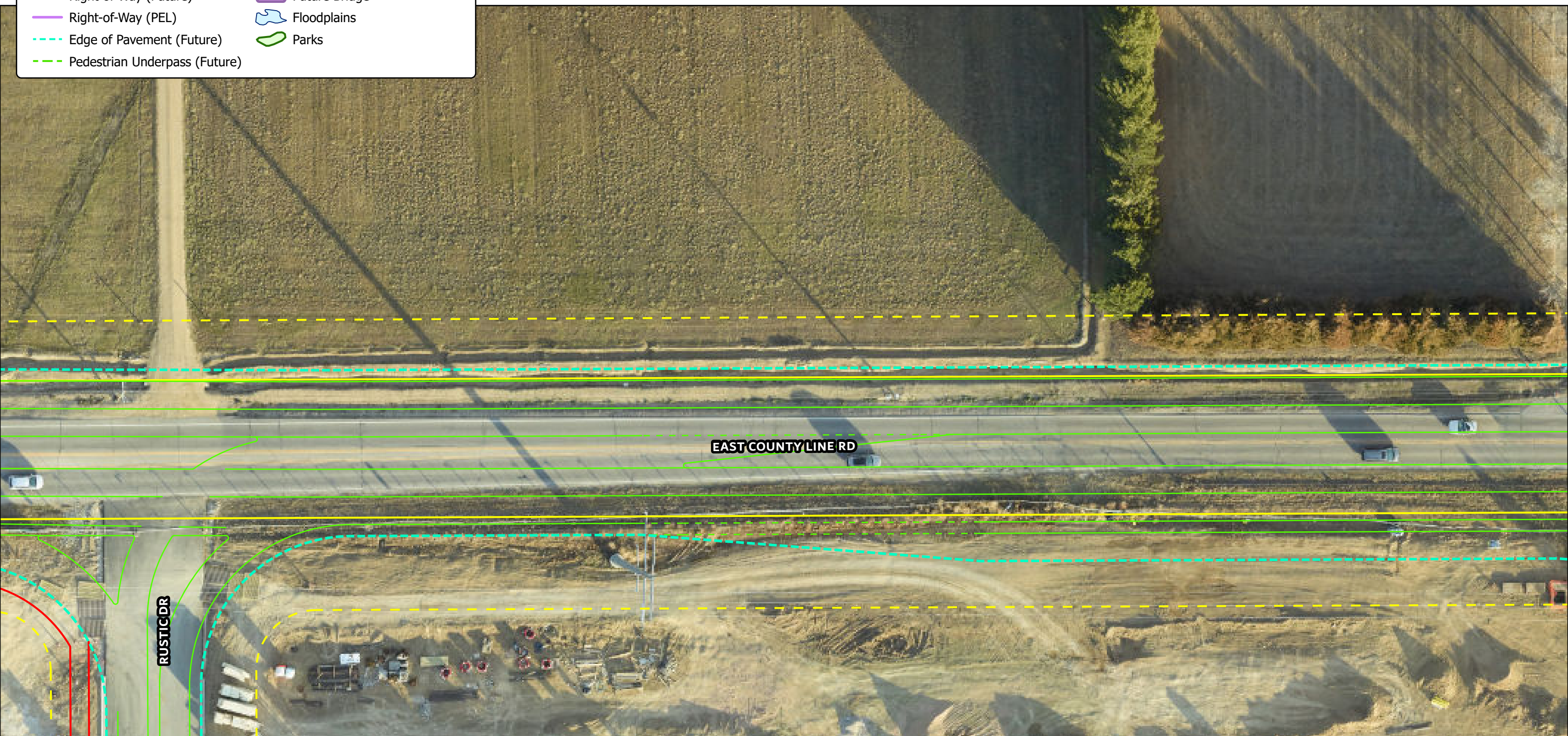
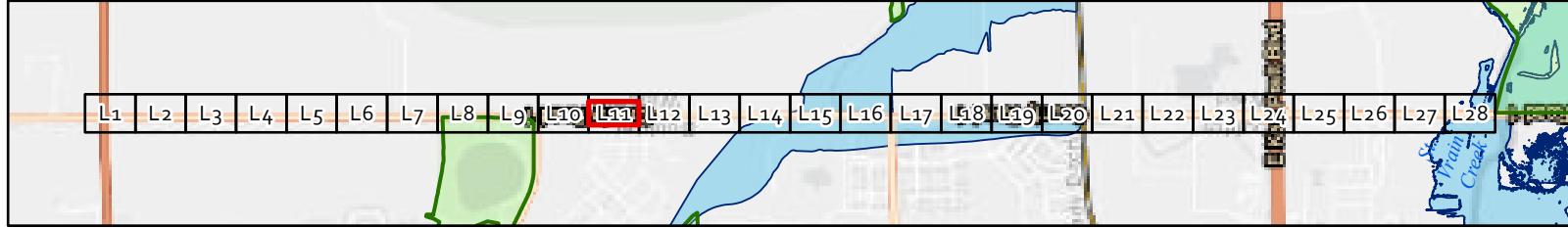




0 20 40 Feet

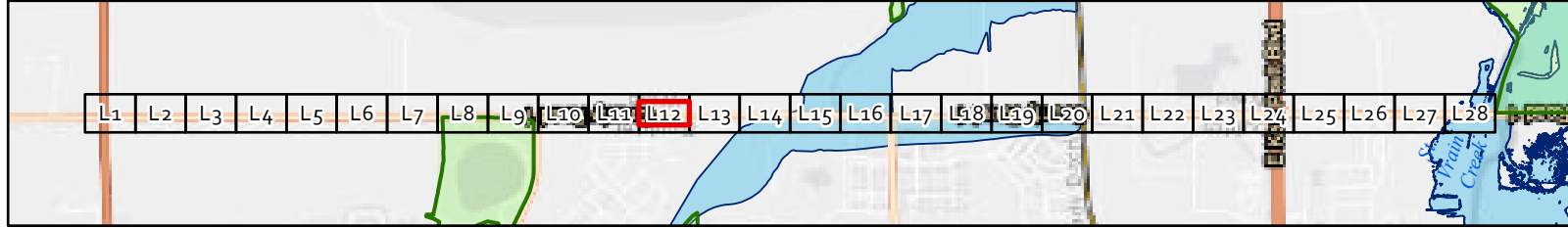
Existing & Proposed ROW Elements

- Striping (Proposed)
- Roundabout Interiors (Future)
- Right-of-Way (Existing)
- Right-of-Way (Future)
- Right-of-Way (PEL)
- - - Edge of Pavement (Future)
- - - Pedestrian Underpass (Future)
- ⋯ Drainage (Future)
- ~ Creek Realignment (Proposed)
- ~ Multi-Use Path (Future)
- ▭ Future Bridge
- ⬭ Floodplains
- ⬭ Parks



Existing & Proposed ROW Elements

- Striping (Proposed)
- Roundabout Interiors (Future)
- Right-of-Way (Existing)
- Right-of-Way (Future)
- Right-of-Way (PEL)
- - - Edge of Pavement (Future)
- - - Pedestrian Underpass (Future)
- ~ ~ ~ Drainage (Future)
- ~ ~ ~ Creek Realignment (Proposed)
- ~ ~ ~ Multi-Use Path (Future)
- ▭ Future Bridge
- ▭ Floodplains
- ▭ Parks



L12 East County Line Road Master Plan





THE LANGDON GROUP



GATEWAY MAPPING INC.

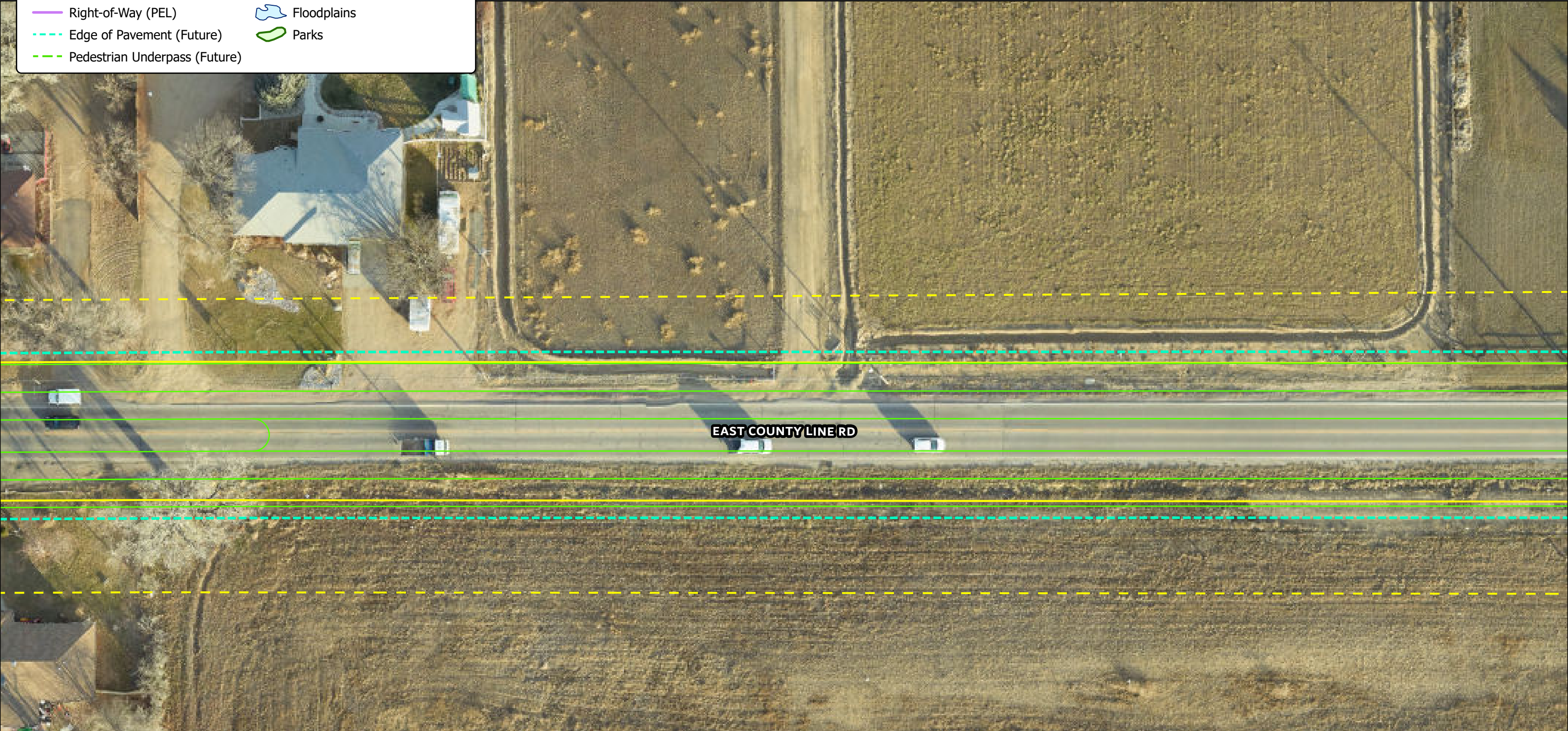
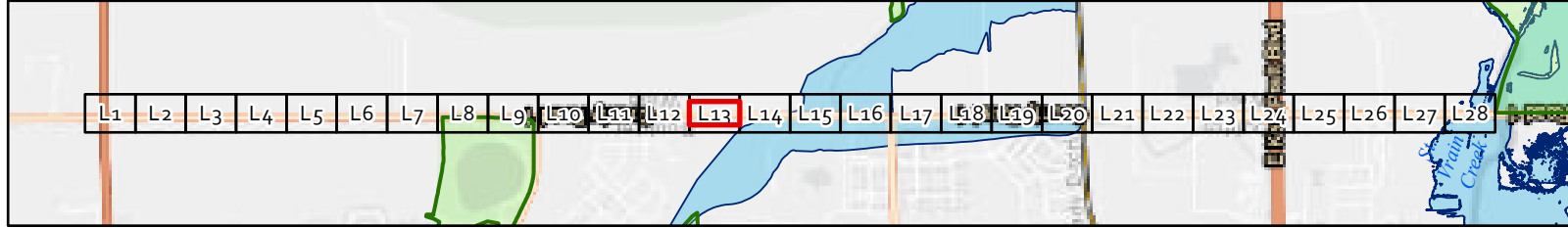
OTHER J-U-B COMPANIES





Existing & Proposed ROW Elements

- Striping (Proposed)
- Roundabout Interiors (Future)
- Right-of-Way (Existing)
- - - Right-of-Way (Future)
- Right-of-Way (PEL)
- - - Edge of Pavement (Future)
- - - Pedestrian Underpass (Future)
- ~ ~ ~ Drainage (Future)
- ~ ~ ~ Creek Realignment (Proposed)
- ~ ~ ~ Multi-Use Path (Future)
- ▭ Future Bridge
- ▭ Floodplains
- ▭ Parks

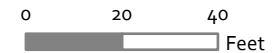


EAST COUNTY LINE RD

L13 East County Line Road Master Plan

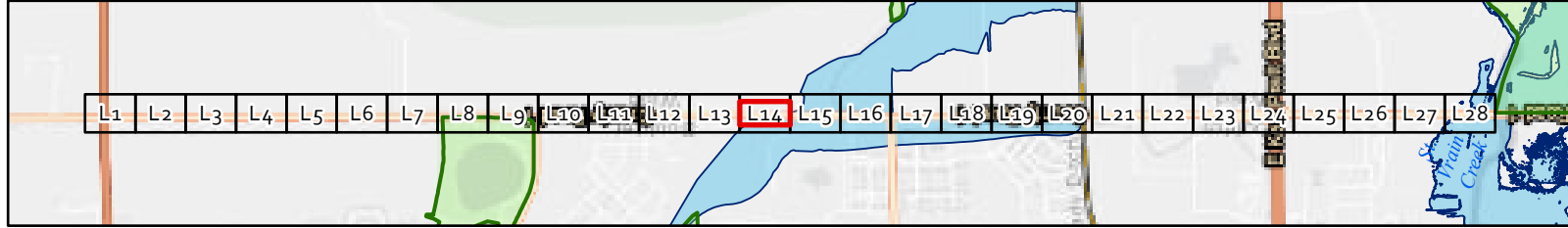


OTHER J-U-B COMPANIES



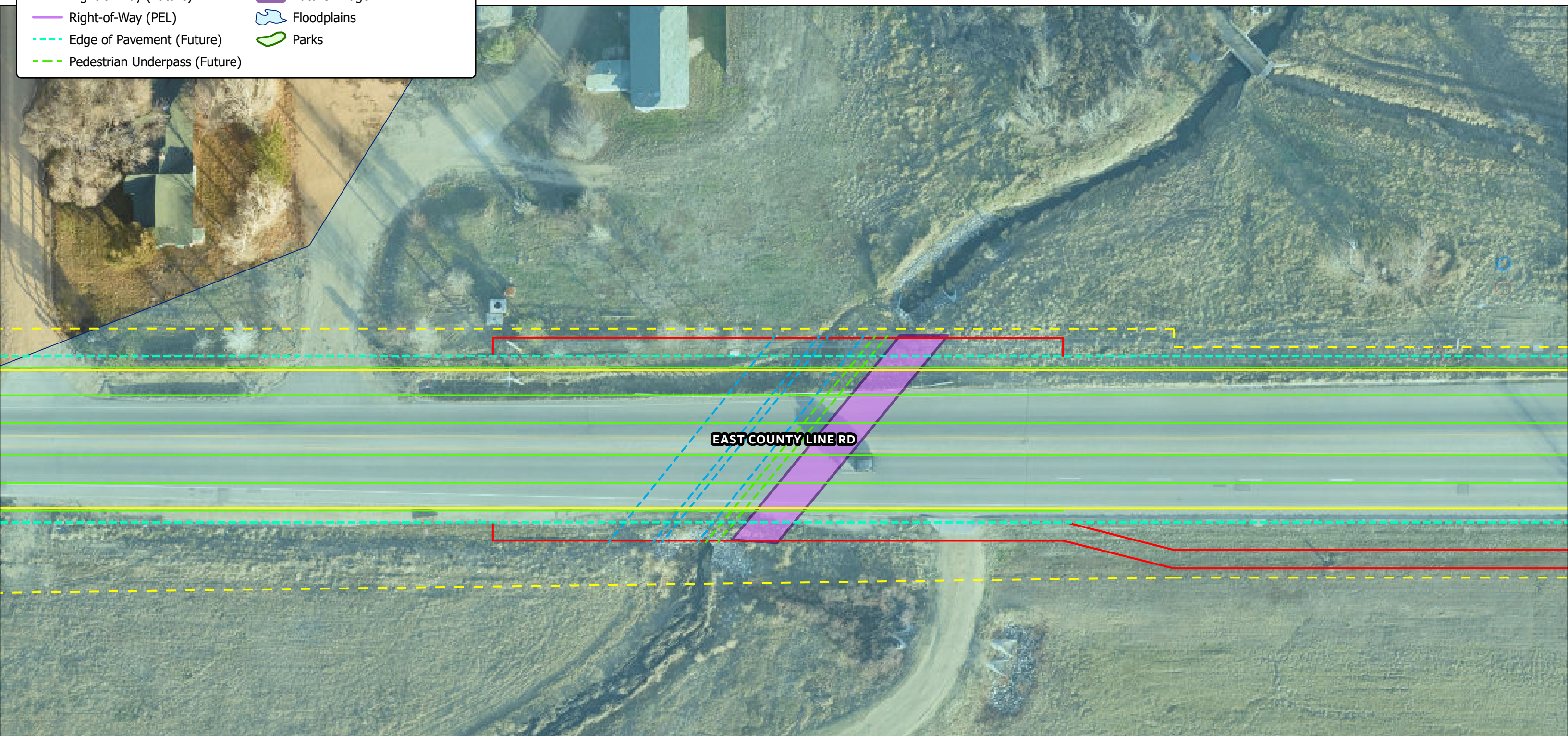
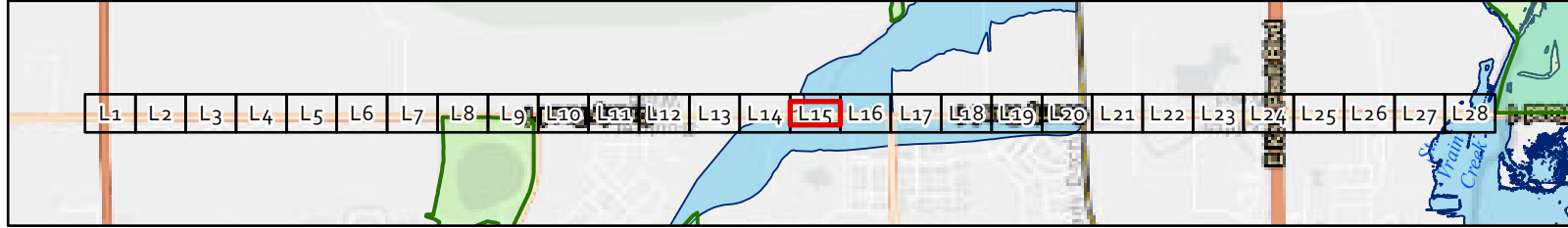
Existing & Proposed ROW Elements

- Striping (Proposed)
- Roundabout Interiors (Future)
- Right-of-Way (Existing)
- - - Right-of-Way (Future)
- Right-of-Way (PEL)
- - - Edge of Pavement (Future)
- - - Pedestrian Underpass (Future)
- Drainage (Future)
- ~ Creek Realignment (Proposed)
- ~ Multi-Use Path (Future)
- ▭ Future Bridge
- ~ Floodplains
- ◊ Parks



Existing & Proposed ROW Elements

- Striping (Proposed)
- Roundabout Interiors (Future)
- Right-of-Way (Existing)
- - - Right-of-Way (Future)
- Right-of-Way (PEL)
- - - Edge of Pavement (Future)
- - - Pedestrian Underpass (Future)
- - - Drainage (Future)
- ~ Creek Realignment (Proposed)
- ~ Multi-Use Path (Future)
- ▭ Future Bridge
- ▭ Floodplains
- ▭ Parks



L15 East County Line Road Master Plan







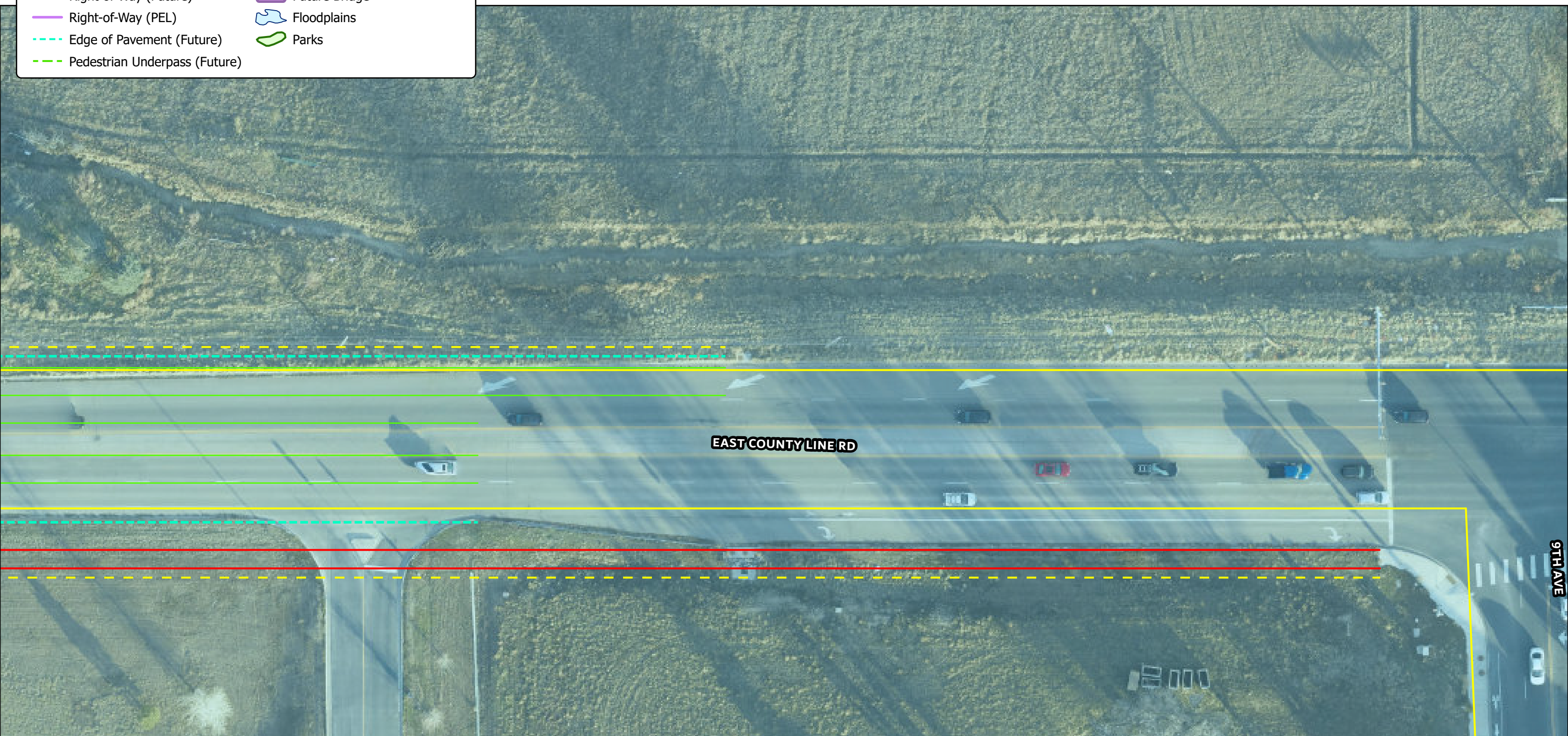
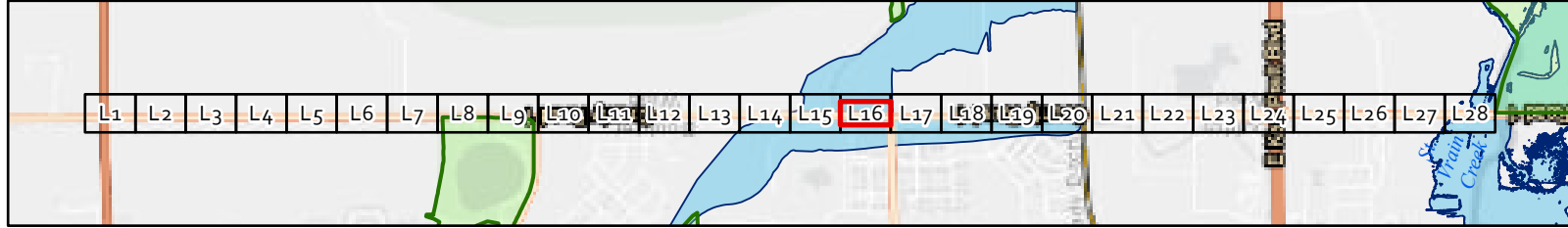
OTHER J-U-B COMPANIES





Existing & Proposed ROW Elements

- Striping (Proposed)
- Roundabout Interiors (Future)
- Right-of-Way (Existing)
- - - Right-of-Way (Future)
- Right-of-Way (PEL)
- - - Edge of Pavement (Future)
- - - Pedestrian Underpass (Future)
- ~ Drainage (Future)
- ~ Creek Realignment (Proposed)
- ~ Multi-Use Path (Future)
- ▭ Future Bridge
- ~ Floodplains
- ~ Parks



L16 East County Line Road Master Plan







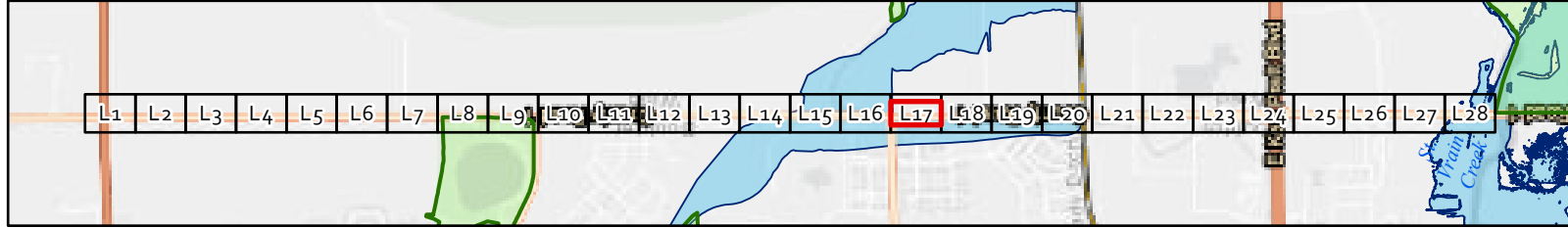
OTHER J-U-B COMPANIES





Existing & Proposed ROW Elements

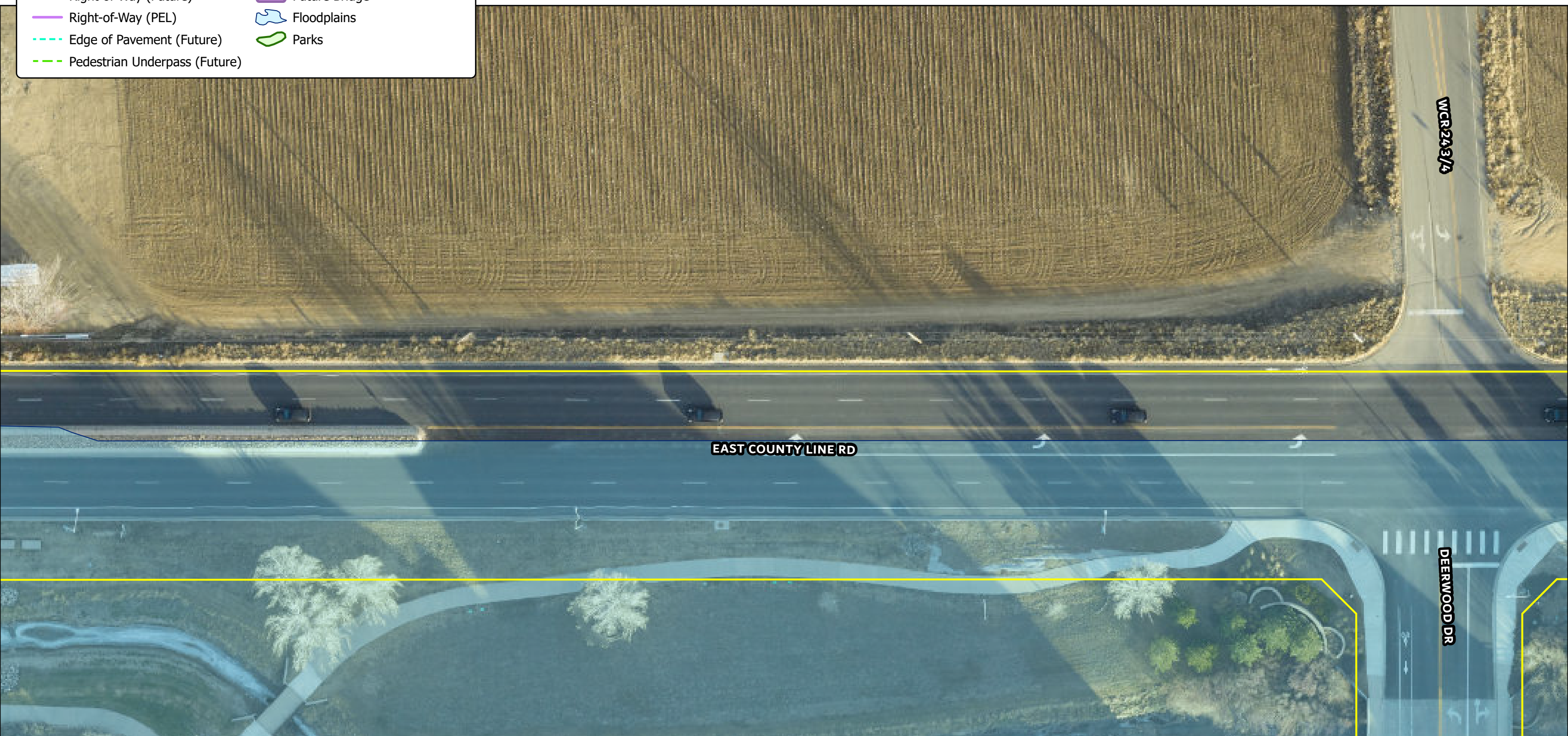
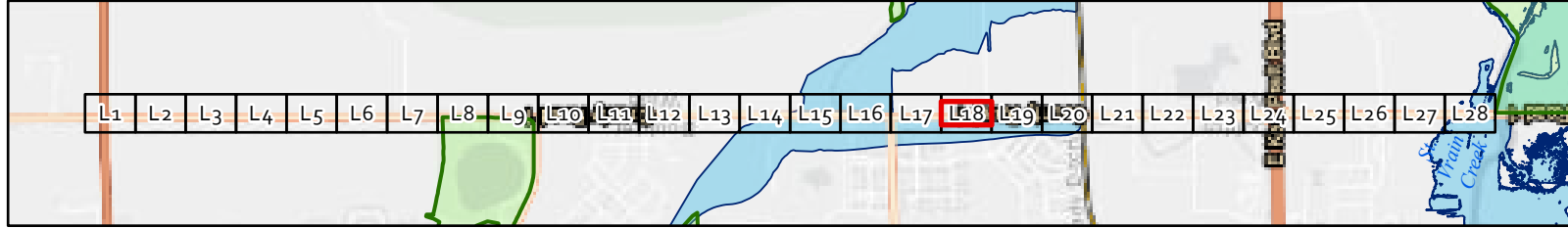
- Striping (Proposed)
- Roundabout Interiors (Future)
- Right-of-Way (Existing)
- Right-of-Way (Future)
- Right-of-Way (PEL)
- - - Edge of Pavement (Future)
- - - Pedestrian Underpass (Future)
- Drainage (Future)
- ~ Creek Realignment (Proposed)
- ~ Multi-Use Path (Future)
- ▭ Future Bridge
- ▭ Floodplains
- ▭ Parks



EAST COUNTY LINE RD

Existing & Proposed ROW Elements

- Striping (Proposed)
- Roundabout Interiors (Future)
- Right-of-Way (Existing)
- Right-of-Way (Future)
- Right-of-Way (PEL)
- - - Edge of Pavement (Future)
- - - Pedestrian Underpass (Future)
- ~ Drainage (Future)
- ~ Creek Realignment (Proposed)
- ~ Multi-Use Path (Future)
- ▭ Future Bridge
- ▭ Floodplains
- ▭ Parks



L18 East County Line Road Master Plan





THE LANGDON GROUP



GATEWAY MAPPING INC.

OTHER J-U-B COMPANIES

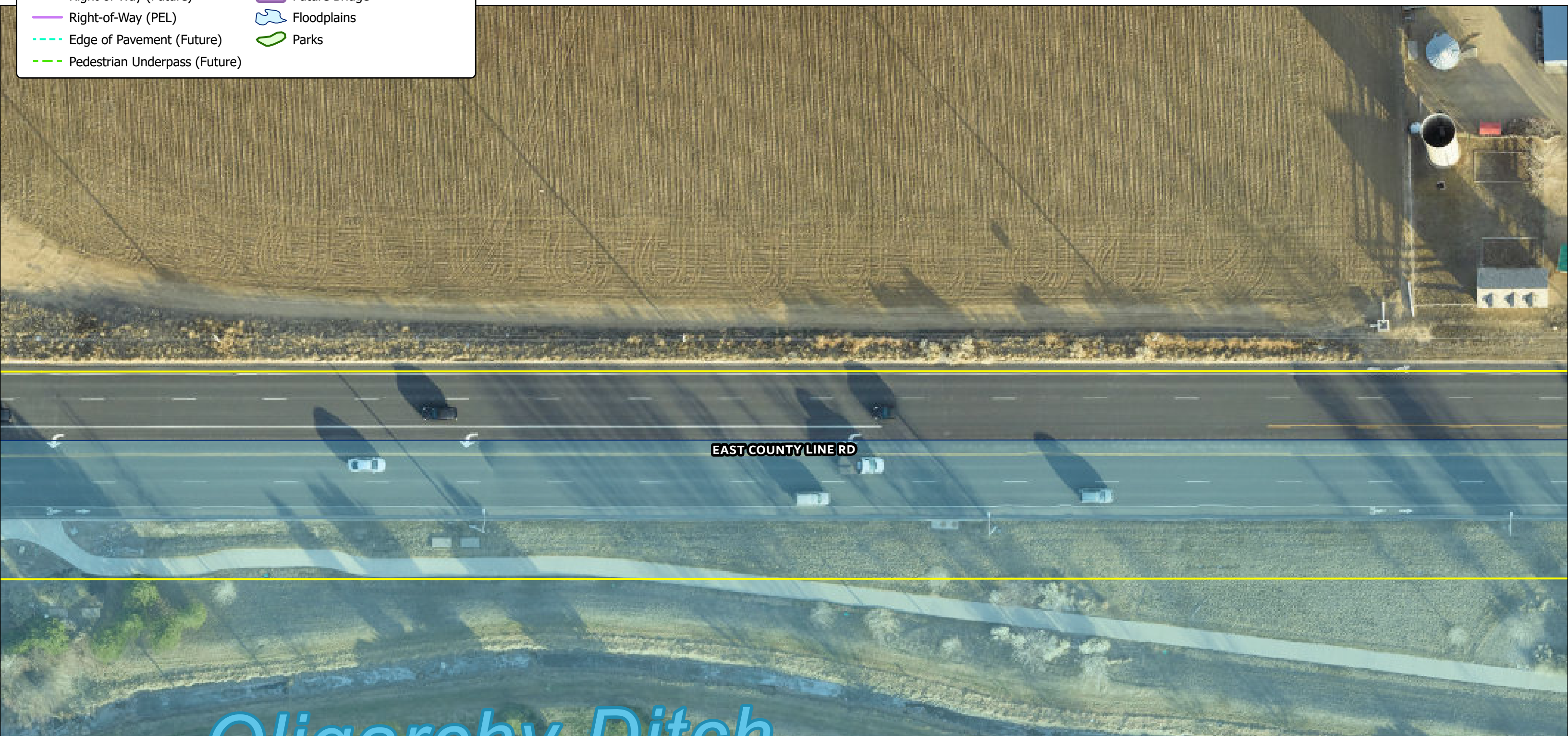
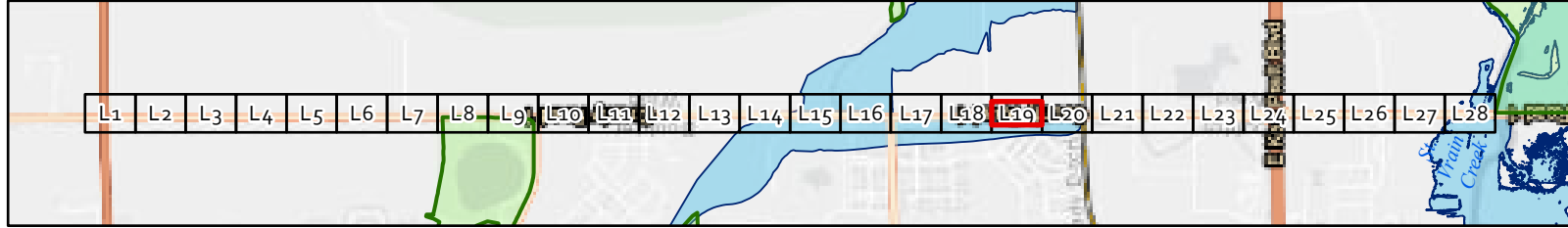




0 20 40 Feet

Existing & Proposed ROW Elements

- Striping (Proposed)
- Roundabout Interiors (Future)
- Right-of-Way (Existing)
- Right-of-Way (Future)
- Right-of-Way (PEL)
- - - Edge of Pavement (Future)
- - - Pedestrian Underpass (Future)
- ~ Drainage (Future)
- ~ Creek Realignment (Proposed)
- ~ Multi-Use Path (Future)
- ▭ Future Bridge
- ▭ Floodplains
- ▭ Parks



L19 East County Line Road Master Plan





THE LANGDON GROUP



GATEWAY MAPPING INC.

OTHER J-U-B COMPANIES

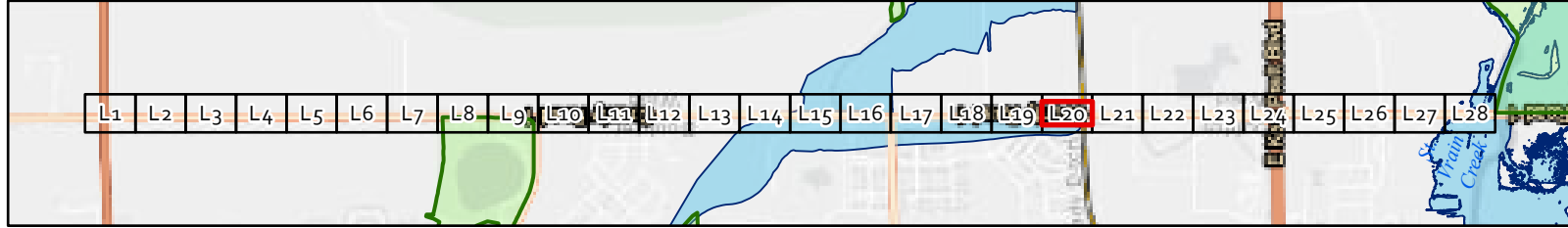




0 20 40 Feet

Existing & Proposed ROW Elements

- Striping (Proposed)
- Roundabout Interiors (Future)
- Right-of-Way (Existing)
- Right-of-Way (Future)
- Right-of-Way (PEL)
- - - Edge of Pavement (Future)
- - - Pedestrian Underpass (Future)
- ~ ~ ~ Drainage (Future)
- ~ ~ ~ Creek Realignment (Proposed)
- ~ ~ ~ Multi-Use Path (Future)
- Future Bridge
- ~ ~ ~ Floodplains
- ~ ~ ~ Parks



L20 East County Line Road Master Plan







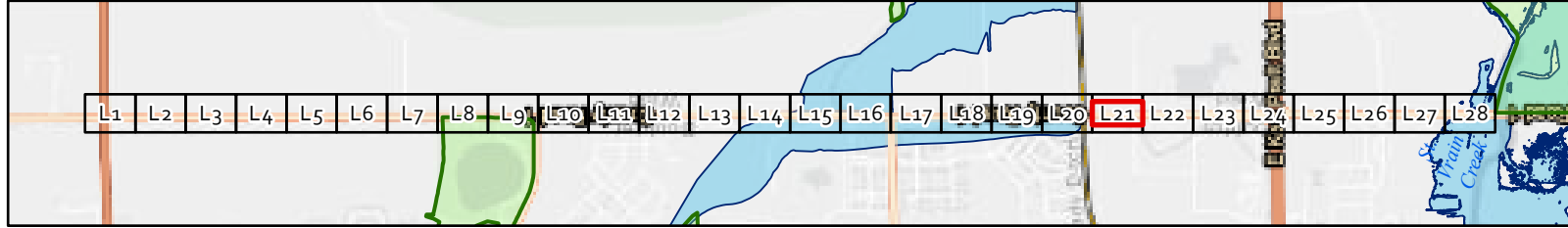
OTHER J-U-B COMPANIES





Existing & Proposed ROW Elements

- Striping (Proposed)
- Roundabout Interiors (Future)
- Right-of-Way (Existing)
- Right-of-Way (Future)
- Right-of-Way (PEL)
- - - Edge of Pavement (Future)
- - - Pedestrian Underpass (Future)
- ⋯ Drainage (Future)
- ~ Creek Realignment (Proposed)
- ~ Multi-Use Path (Future)
- ▭ Future Bridge
- ▭ Floodplains
- ▭ Parks



L21 East County Line Road Master Plan







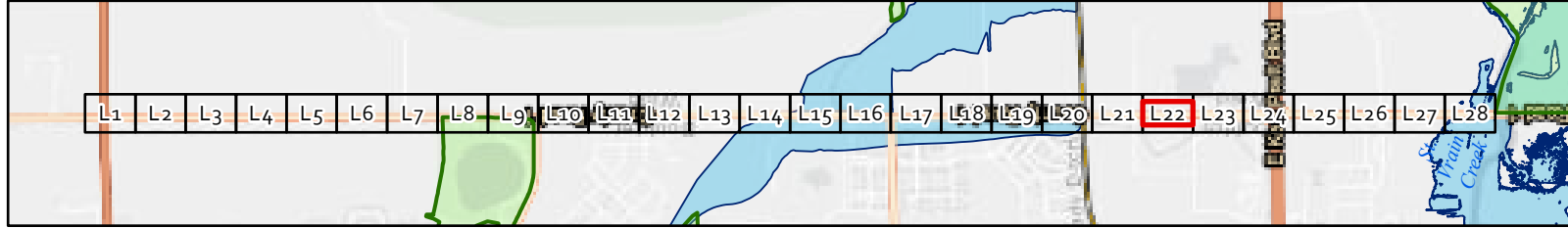
OTHER J-U-B COMPANIES





Existing & Proposed ROW Elements

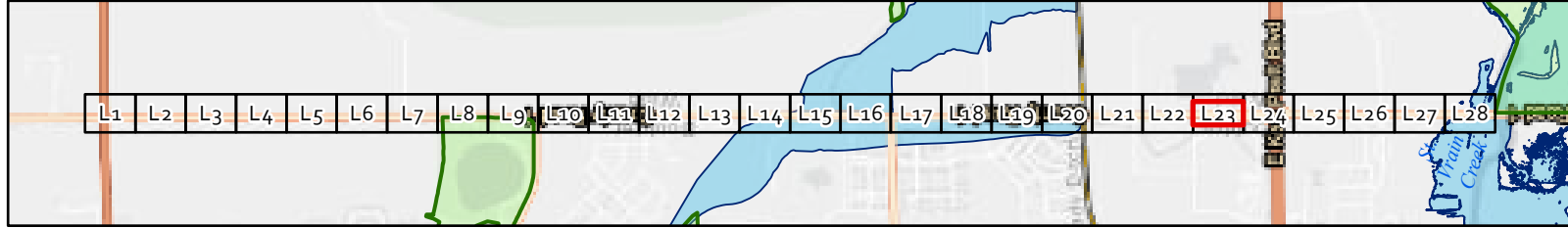
- Striping (Proposed)
- Roundabout Interiors (Future)
- Right-of-Way (Existing)
- Right-of-Way (Future)
- Right-of-Way (PEL)
- - - Edge of Pavement (Future)
- - - Pedestrian Underpass (Future)
- Drainage (Future)
- ~ Creek Realignment (Proposed)
- ~ Multi-Use Path (Future)
- ▭ Future Bridge
- ▭ Floodplains
- ▭ Parks



EAST COUNTY LINE RD

Existing & Proposed ROW Elements

- Striping (Proposed)
- Roundabout Interiors (Future)
- Right-of-Way (Existing)
- Right-of-Way (Future)
- Right-of-Way (PEL)
- - - Edge of Pavement (Future)
- - - Pedestrian Underpass (Future)
- Drainage (Future)
- ~ Creek Realignment (Proposed)
- ~ Multi-Use Path (Future)
- ▭ Future Bridge
- ▭ Floodplains
- ▭ Parks



L23 East County Line Road Master Plan





THE LANGDON GROUP



GATEWAY MAPPING INC.

OTHER J-U-B COMPANIES

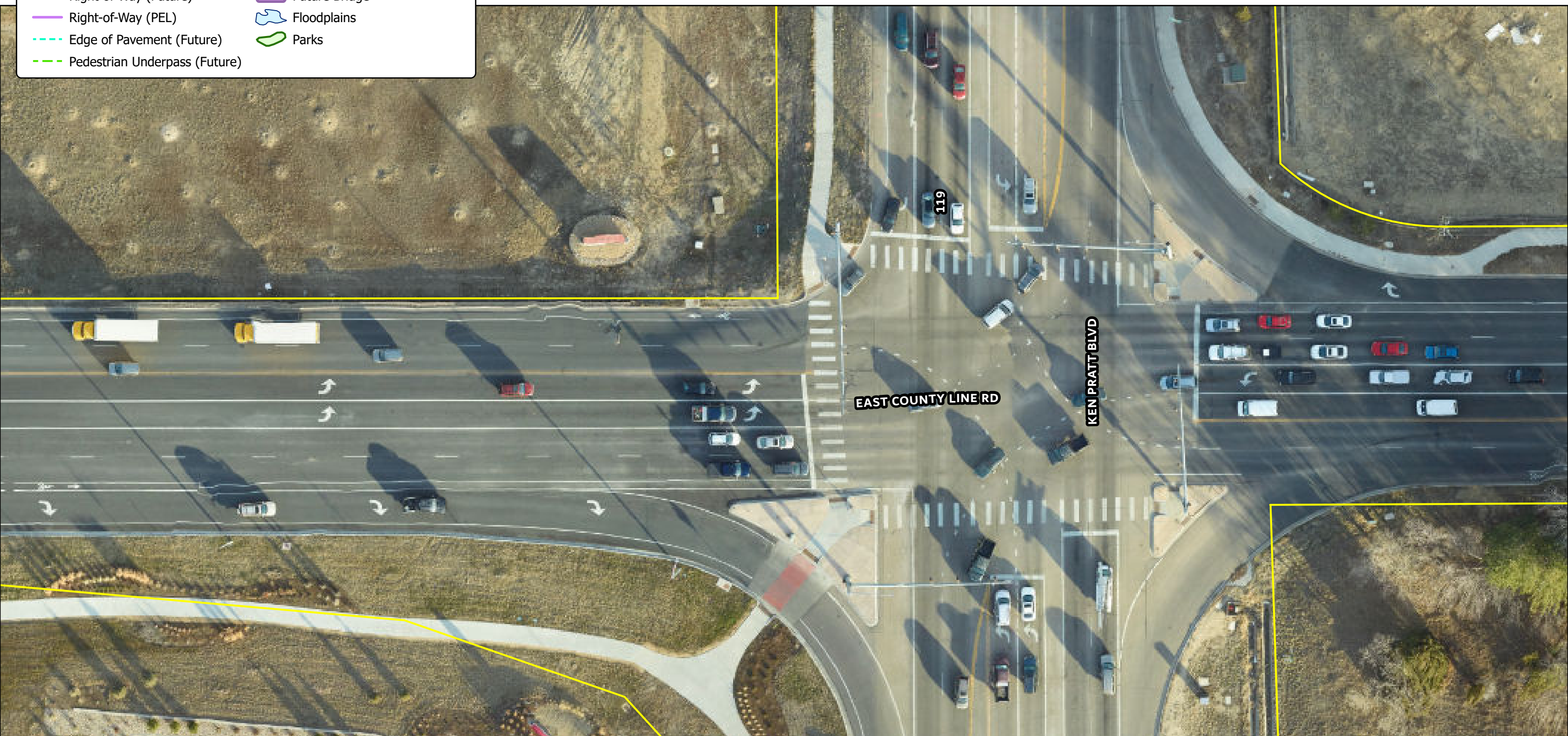
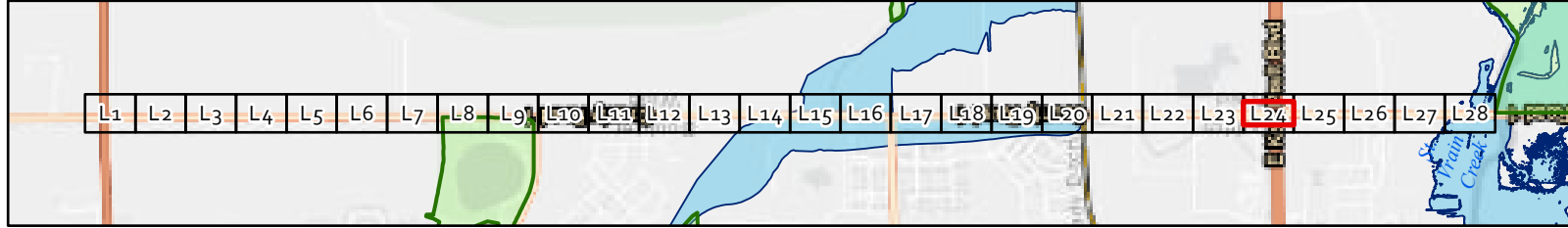




0 20 40 Feet

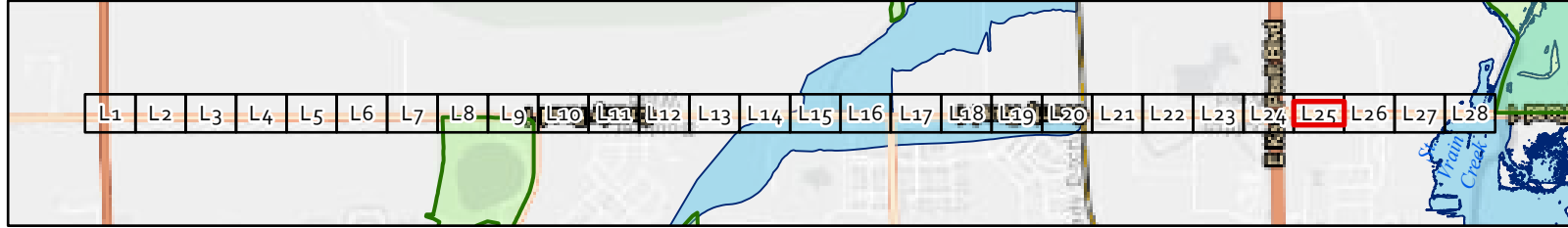
Existing & Proposed ROW Elements

- Striping (Proposed)
- Roundabout Interiors (Future)
- Right-of-Way (Existing)
- Right-of-Way (Future)
- Right-of-Way (PEL)
- - - Edge of Pavement (Future)
- - - Pedestrian Underpass (Future)
- ~ Drainage (Future)
- ~ Creek Realignment (Proposed)
- ~ Multi-Use Path (Future)
- ▭ Future Bridge
- ▭ Floodplains
- ▭ Parks



Existing & Proposed ROW Elements

- Striping (Proposed)
- Roundabout Interiors (Future)
- Right-of-Way (Existing)
- Right-of-Way (Future)
- Right-of-Way (PEL)
- - - Edge of Pavement (Future)
- - - Pedestrian Underpass (Future)
- Drainage (Future)
- ~ Creek Realignment (Proposed)
- ~ Multi-Use Path (Future)
- ▭ Future Bridge
- ▭ Floodplains
- ▭ Parks



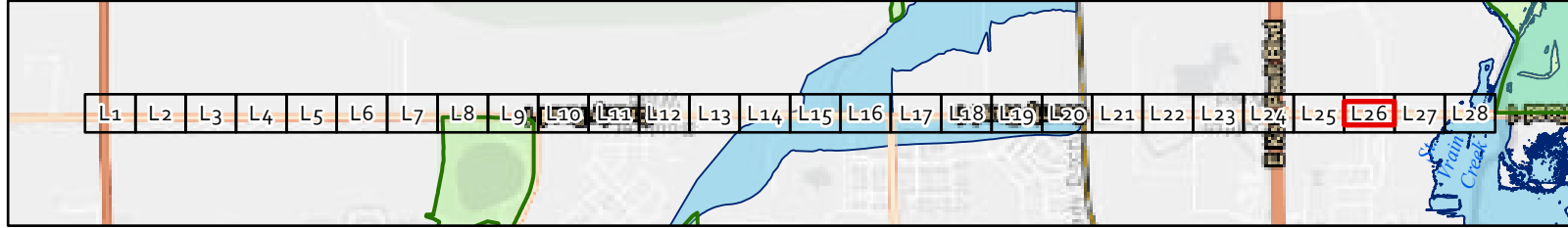
EAST COUNTY LINE RD

L25 East County Line Road Master Plan

OTHER J-U-B COMPANIES

Existing & Proposed ROW Elements

- Striping (Proposed)
- Roundabout Interiors (Future)
- Right-of-Way (Existing)
- Right-of-Way (Future)
- Right-of-Way (PEL)
- - - Edge of Pavement (Future)
- - - Pedestrian Underpass (Future)
- ~ Drainage (Future)
- ~ Creek Realignment (Proposed)
- ~ Multi-Use Path (Future)
- ▭ Future Bridge
- ~ Floodplains
- Parks



L26 East County Line Road Master Plan







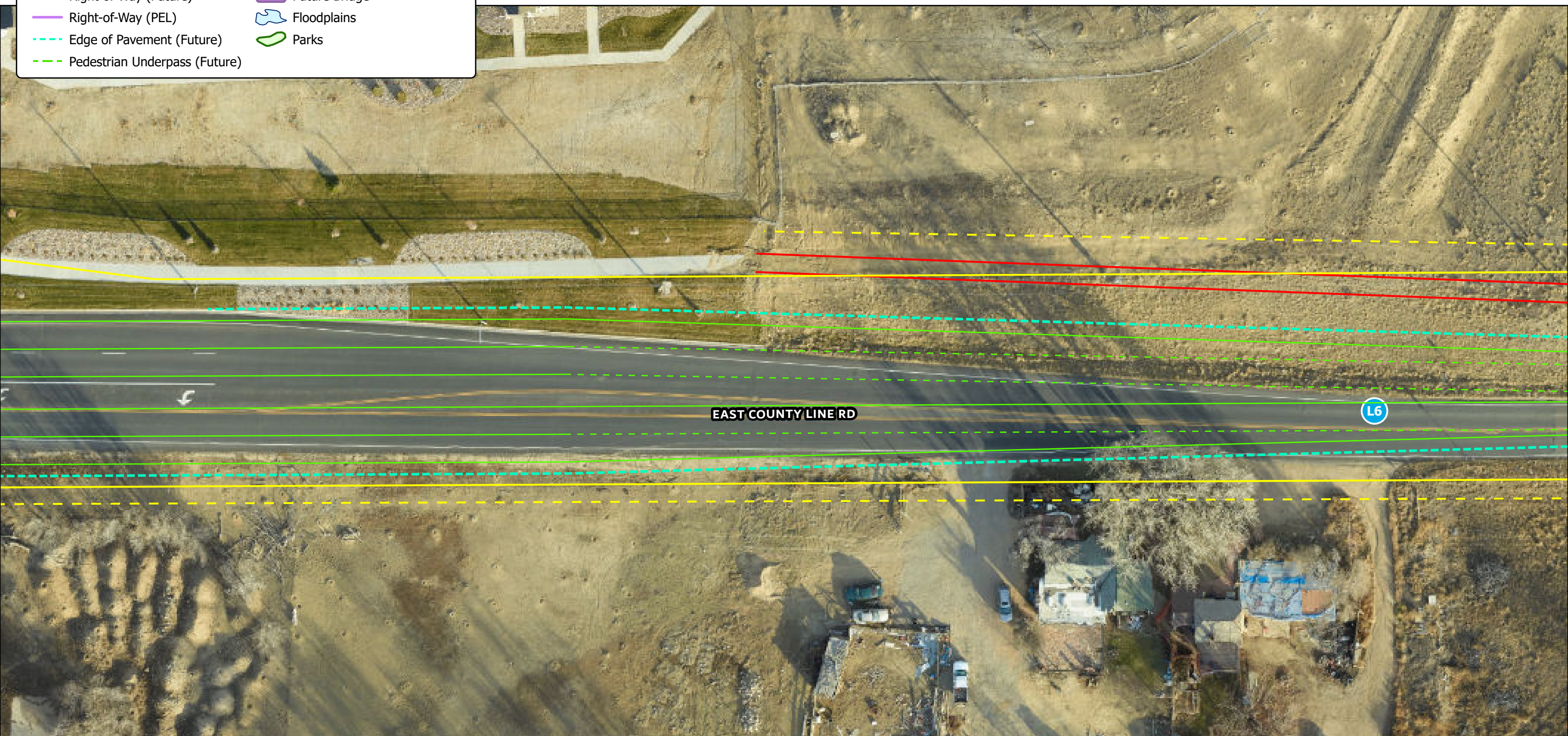
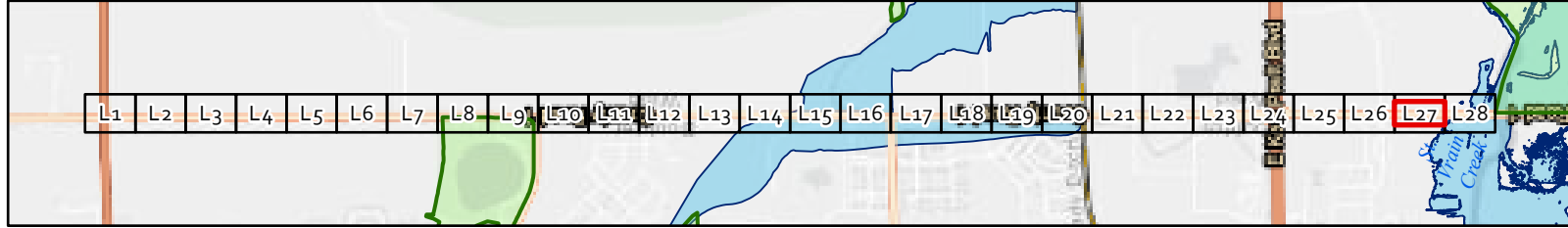
OTHER J-U-B COMPANIES





Existing & Proposed ROW Elements

- Striping (Proposed)
- Roundabout Interiors (Future)
- Right-of-Way (Existing)
- Right-of-Way (Future)
- Right-of-Way (PEL)
- - - Edge of Pavement (Future)
- - - Pedestrian Underpass (Future)
- ~ Drainage (Future)
- ~ Creek Realignment (Proposed)
- ~ Multi-Use Path (Future)
- Future Bridge
- Floodplains
- Parks

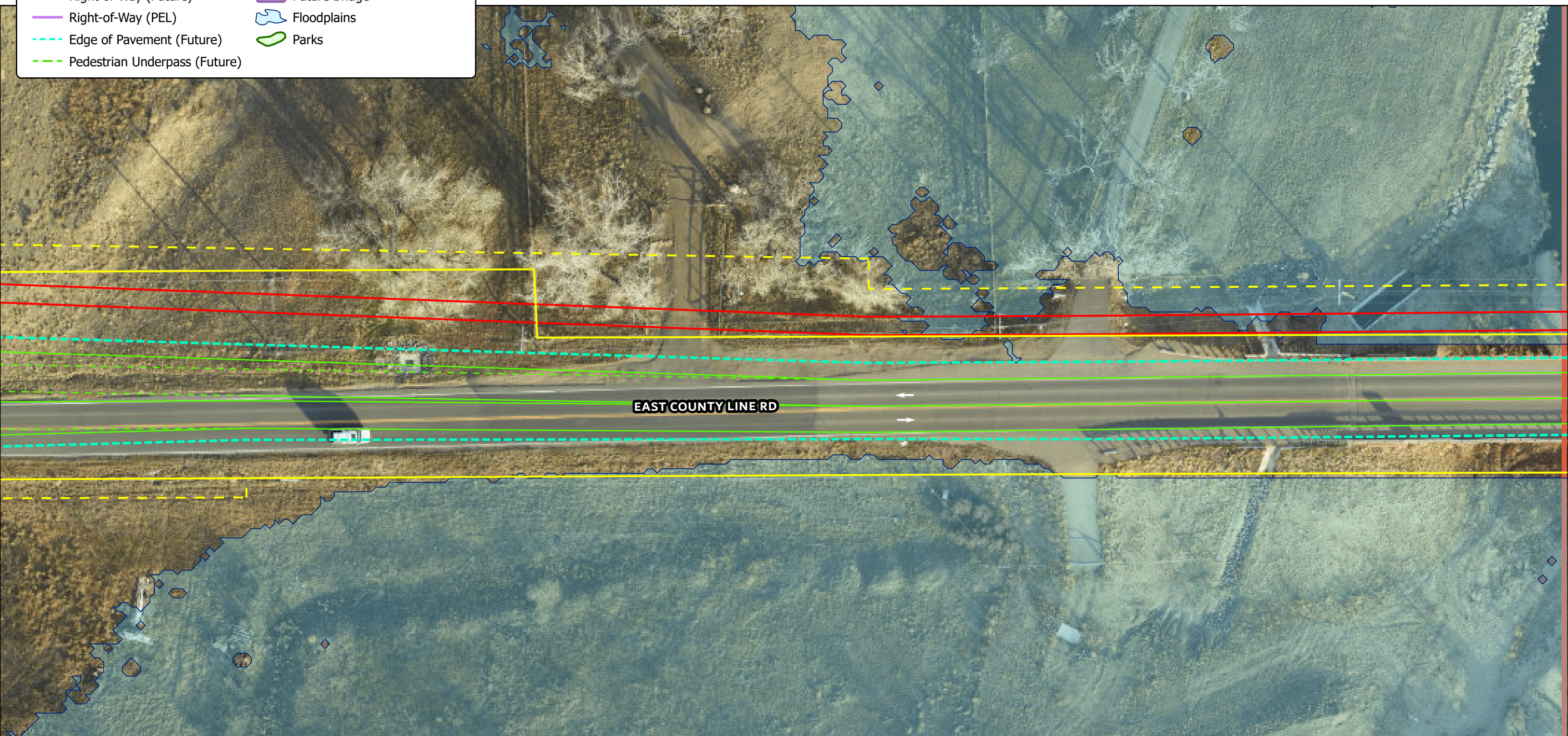
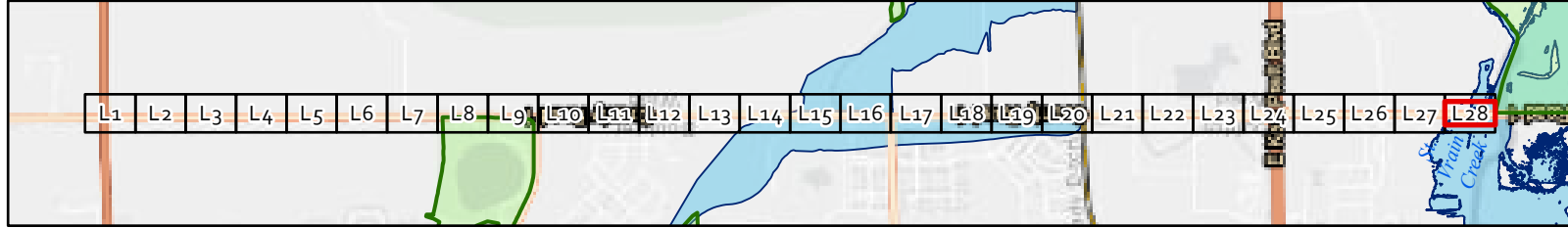


EAST COUNTY LINE RD

L6

Existing & Proposed ROW Elements

- Striping (Proposed)
- Roundabout Interiors (Future)
- Right-of-Way (Existing)
- - - Right-of-Way (Future)
- Right-of-Way (PEL)
- - - Edge of Pavement (Future)
- - - Pedestrian Underpass (Future)
- - - Drainage (Future)
- ~ Creek Realignment (Proposed)
- ~ Multi-Use Path (Future)
- ▭ Future Bridge
- ▭ Floodplains
- ▭ Parks



L28 East County Line Road Master Plan





THE
LANGDON
GROUP



GATEWAY
MAPPING
INC.

OTHER J-U-B COMPANIES



