

Boulder County Community Forestry Sort Yard 2020 Annual Report

Written by Wayne Harrington



Introduction:

This is the 13th year that Parks and Open Space has managed the Community Forestry Sort Yard program. The mission of the Community Forestry Sort Yard (CFSY) program is to inspire landowners to actively manage their forested properties. This annual report is broken down into three main sections, combined CFSY program data, Nederland CFSY data, and Meeker Park CFSY data. The report covers: user trends, origins of material, reasons for removal, and volumes of removed material. The volume figures in this report are approximate and include materials sorted and processed at both sort yard sites. **Appendix A** contains more detailed information on transportation costs, tip fees, budget information, direction of travel along Ridge Road, information for the Nederland Yard, and contains a comprehensive load count from 2008 to present.

In addition to dealing with the COVID-19 pandemic in 2020, there was also a very active state-wide fire season that lasted into early November. The COVID-19 outbreak delayed the start of the 2020 season by approximately one month, until we could develop and approve a safety protocol. In October of 2020, Boulder County had its largest wildfire in history, with the Cal-Wood Fire burning over 10,000 acres. The Cal-Wood Fire started on Saturday, Oct. 17, which was the original closing date for the Nederland CFSY. There was a big push from the public to re-open the yards, as many landowners wanted to complete mitigation. The Nederland CFSY re-opened on Wednesday, Oct. 28 and closed on Saturday, Nov. 21. The additional days in November helped to make up for the delayed opening, but because of budget considerations, only the Nederland CFSY was re-opened.

Education and outreach is a large part of the program. Unfortunately, there was no Wildfire Awareness Day at either yard as a result of COVID -19 restrictions. We were able to continue a monthly newsletter, provide educational handouts, and utilize a twitter account to connect with the public.



Figure 1: Nederland CFSY, Friday, Oct. 16, smoke from the East Troublesome Fire.

Combined CFSY Data

Load Count:

The total load count for 2020 was 9,563 loads, which is a new record high, even though the season started in June because of COVID-19. There were 637 new users in 2020-284 from Nederland, 353 from Meeker Park (**Figure 2**). In total, there were 1,875 different users with an average of 5.1 loads per user. For reference, in 2019 there were 1,474 different users with an average of 4.2 loads per user. **Table 1** below tracks the load counts during the past five years, and this year’s numbers are way above average. Refer to **Appendix A** for data going back to 2008.

Year	Operational Days	Load Count	Daily Average
2016	192	6509	33.9
2017	169	6945	41.1
2018	174	6878	39.5
2019	178	6156	34.6
2020	160	9563	59.8
Five-Year Average	174.6	7210.2	41.3



Figure 2: Future Biomass Fuel at the Meeker Park CFSY.

Table 2 demonstrates the break down between the two sort yards during 2020 based on the percentage of load count, slash tons, and wood volume/weights. Operational days and percentage of operational days were also added to provide comparisons between the two yards. Nederland CFSY accounted for 58% load count, 63% of slash tons, and 59% of the roll-offs.

Table 2: CFSY Yard Comparisons.

Yard	Percent of Operational Days	Percent of Load Count	Percent of Slash Tons	Percent of Wood Tons	Percent of Yard Debris Volume	Percent of 40- Cubic Yard Roll-offs
Meeker Park	41.2%	41.5%	37.0%	39.4%	50.0%	40.7%
Nederland	58.8%	58.5%	63.0%	60.1%	50.0%	59.3%

Origin of Material:

The following chart (Table 3) summarizes material and amounts based on the county of origin. Outside of Boulder County, Larimer County was the origination for the most material, with roughly 38% of yard debris, an increase of 15% from 2019.

Table 3: Origin of material by county.

County	Users by County	Percentage (Users) by County	Percentage Load Count	Total Tons by County	Percentage (Tons) by County	Percentage of Yard Debris Volume
Boulder	1291	68.9%	73.5%	1145.3	75.9%	59.1%
Larimer	494	26.3%	23.0%	254.0	16.8%	38.2%
Gilpin	42	2.2%	1.7 %	74.2	4.9%	1.3%
Jefferson	47	2.5%	1.8%	36.3	2.4%	1.4%
N/A*	1	0.0%	0.0%	0.0	0.0%	0.0%

* Incomplete Data

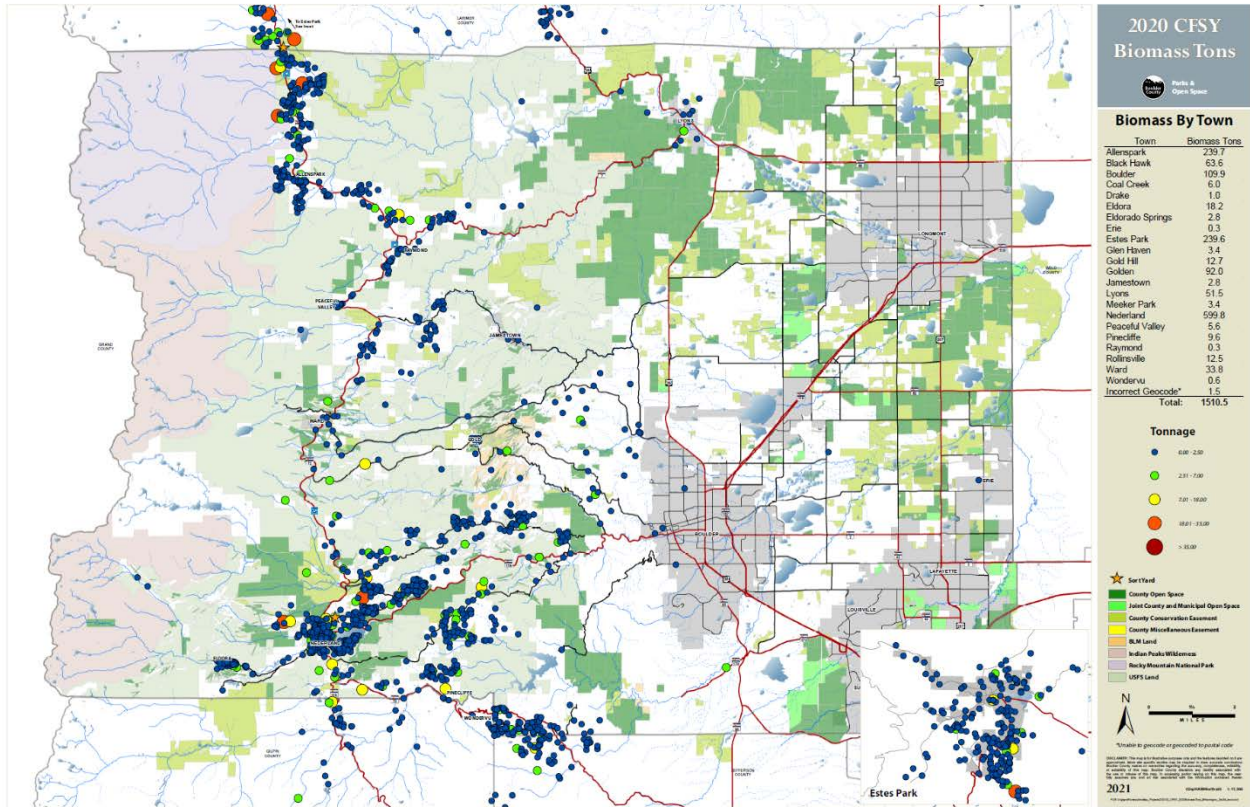


Figure 3: 2020 CFSY Biomass Tons Map. Notice the amount of material north of the County line.

The 2020 CFSY Biomass Tons Map (Figure 3) shows geographically where most of the loads originated. See the inset section of the map, where loads originated from the Town of Estes Park. Estes Park and Larimer County don't contribute any funds or staffing to the Boulder CFSY.

Reason for Removal:

Reason for removal is tracked to find out why residents are bringing biomass to the sort yards. The list below contains the eleven primary categories:

1. Fire Mitigation
 - a. Includes any material removed within the home ignition zone (HIZ), 100 feet adjacent to structures.
 - b. Any vegetation that will affect intensity of wildland fire that approaches a HIZ. This includes removal of trees, limbs, old slash piles, and other woody material, except construction and demolition debris/scrap.
2. Noxious Weed Management
3. Yard Cleaning
4. Wind Throw/ Wind Damage
5. Construction

This category was tracked after the Cold Springs Fire to see how much material can be attributed to the fire.

- 6. Forest Health
- 7. Other
Low volume, not a hot topic or was not on the current drop-down list.
- 8. Cold Springs Fire clean up
- 9. Bark Beetles
 - a. Mountain pine beetle
 - b. Ips spp.
 - c. Spruce beetle
- 10. Hazard Tree
- 11. Wildfire Partners

Table 4 below shows the tallies for the different types of reasons for removal. Fire mitigation was the primary reason, resulting in the largest amount of the slash (90.4%), wood volume (89.1%), wood chip volume and yard debris volume (91.0%). Noxious weed management was the second highest reason, representing 4.6% of yard debris volume. The Cold Springs fire clean-up removal accounted for 0.8% of total slash volume and 2.9% of total wood volume. This reason for removal will be tracked again next year.

Table 4: Percentage of primary reason removal.

Primary Reason for Removal	Load Count	Slash Tons	Wood Tons	Wood Chip Tons	Yard Debris Volume
Fire Mitigation/ D-Space	88.9%	90.4%	89.1%	96.7%	91.0%
Noxious Weed Management	2.8%	0.0%	0.0%	0.0%	4.6%
Yard Cleaning	2.4%	0.7%	1.0%	0.0%	3.9%
Wind Throw/Wind Damage	1.9%	2.6%	0.3%	0.0%	0.0%
Construction	1.2%	2.6%	0.2%	1.7%	0.0%
Forest Health	0.8%	1.2%	1.3%	0.0%	0.0%
Other	0.7%	0.9%	0.3%	0.0%	0.4%
Cold Springs Fire Clean-Up	0.7%	0.8%	5.9%	0.0%	0.0%
Bark Beetles	0.2%	0.3%	1.3%	0.0%	0.0%

Hazard Tree	0.2%	0.2%	0.5%	0.0%	0.0%
Wildfire Partners	0.1%	0.3%	0.0%	1.7%	0.0%

Grinding Operations:

In 2020, there were 128 total hours of grinding. Grinding operations are separated into three categories: Biomass Fuel, CFSY Slash, and Community Grinding Events.

Biomass Fuel: No biomass fuel was ground in 2020. Instead, three loads of wood straw were ground using logs and chunk with the four-inch screen installed in the grinder. The wood straw is planned to be used for Calwood fire rehab project at Heil Valley Ranch.

CFSY Slash: The grinder was transported between yards during the summer months in order to keep the sites clear and open for receiving more slash. Slash was ground directly into semi-trucks this year in order to reduce handling time. The Meeker Park yard produced 31 semi-truck loads, and the Nederland yard produced 51 semi-truck loads, for a total of 82 semi-trucks loads of ground slash, an increase of 29 loads from 2019. See **Appendix A** for breakdown of cost by yard and charges.

Community Grinding Events: There were no community grinding events in 2020. There are plans for community grinding events in 2021.



Figure 4: Left --Grinding at Meeker Park yard, Cameron Fire in background, Right --Grinding at the Nederland yard.

Pine Needles:

Pine needles are reground and directly loaded into semi-trucks. Besides being faster than loading with the excavator bucket, the magnet on the grinder removes all the small household metal items that have fallen on the ground over the years, averaging about five pounds of metal per load (mostly

nails, screws, wire and other random small metal items). Nederland CFSY produced two semi-truck loads, and Meeker Park CFSY produced six semi-truck loads. Some pine needles were used to top off roll-offs before they were hauled off site.

Bagged Material/ Noxious Weed Collection:

Bagged material and noxious weed collection (Table 5 and Figure 5) continue to gain momentum, with a total of 27- 40 cubic yard roll-off containers. This is the third year in a row where the volume has significantly increased from the previous year. There was also an increase in the cost of roll-offs this year; Nederland yard was up \$14.52, and Meeker Park was up \$17.61 per roll-off. There was an overall increase of \$3,432.70 this year to complete the noxious weed collections, for a total of \$14,629.73.

The noxious weed roll-offs were sent to A-1 Organics in Weld County for composting. The roll-offs were topped off with pine needles, in order to make sure they were sent down the hill full before the 30-day limit on site.

Table 5: Bagged material roll-off information.

Yard	Bagged Material	Pine Needle Filler	Total Roll-offs	Total Roll-off Tons	Cost per Roll-off	Total Cost
Meeker Park	9.9	1.1	11	38.8	\$604.71	\$6,651.81
Nederland	14.4	1.6	16	63.6	\$498.62	\$7,977.92
Totals	24.3	2.7	27	102.4	N/A	\$14,629.73



Figure 5: Left -- Trailer full of pinecones, Right-- roll-off overflowing with lawn bags.

2020 Volume Numbers:

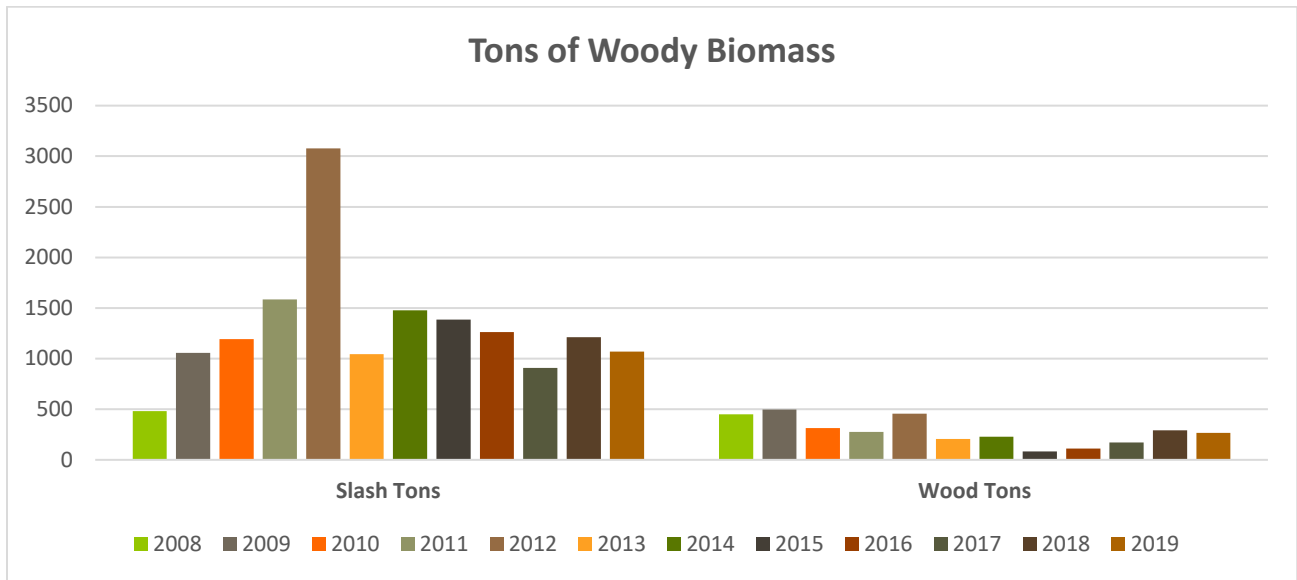


Figure 6: Woody biomass collected at sort yards from the past thirteen years.

Figure 6 above shows the woody biomass collected at the sort yards for the past 13 years. As stated at the beginning of the report, volumes are estimated. **Table 6** summarizes the biomass tonnage from the different yards in 2020.

Table 6: Summary of all biomass removed from the yards.

Yard	Slash Tons	Wood Tons	Chip Tons	Noxious Weed 40 Cubic Yard Roll-offs Tons
Meeker Park	396.4	106.8	32.3	38.8
Nederland	673.5	160.6	140.3	63.6
Totals	1069.9	267.4	172.6	102.4

Total material processed for the 2020 Season: 1612.4

The CFSY staff processed a total of 82 semi-truck loads of ground mulch hauled from both yards in 2020.

Table 7 shows the semi-truck loads hauled from both yards over the years. The numbers include all biomass fuel loads from in-house projects. 2020 set a new high load count, with 82 semi loads.

Table 7: Semi-truck usage over past thirteen years.

Semi-Truck Loads				
Year	Yard		Total Loads	Notes
	Meeker Park	Nederland		
2008	N/A	No Yard Yet	N/A	All slash was processed with an Air Curtain Burner.
2009	N/A	No Yard Yet	N/A	
2010	N/A	8	8	A-1 Organics contracted for the grinding and hauling at the Nederland Yard.
2011	N/A	15	15	Oxford and Hagman contracted for grinding and hauling at both yards. Air Curtain Burner sold in 2014.
2012	42	33	75	
2013	16	30	46	
2014	22	21	43	
2015	12	29	41	Renewable Fiber contracted for hauling, expired at the end of 2019.
2016	18	38	56	
2017	24	39	63	
2018	27	41	68	
2019	29	49	78	
2020	31	51	82	JRP Transportation contracted for hauling

Closing Thoughts:

Both CFSYs opened in June, as the CFSY was considered a Tier Two program. Once a COVID-19 protocol was developed, we were able to open the yards to the public. During the shutdown and “Safer-at-Home” orders, many residents were at home spending their time working outside on improving their defensible space. There was public pressure to open the yards in May because much of the Front Range was already in a fire ban. In June, both yards opened to the public with record load counts during first week of operations.

At the end of the operating season conditions were extremely dry. There were several large wildland fires on the Front Range, including the Cal-Wood fire in Boulder County. With smoke in the air, public pressure increased for additional yard operations. This situation led to above average use in both yards at the end of the season. The Town of Estes Park was a major reason for the increase use of the Meeker Park yard, because of Cameron Peak fire. This fire caused record use and volumes for both yards in 2020. At the beginning and end of the seasons, two staff members were required at each

yard to keep the yards organized and to make sure each yard operator could have ample break time.

The CFSY program was able to stay under budget by finding additional locations for ground material where there was little to no tip fees associated with 82 semi-loads of ground mulch. Savings amounted to approximately \$25,000 in 2020.

It may be time to rethink the length of the operating season for the CFSY program. Adding a week on the front end of the season and two additional weeks on the back end. This change would require additional funding for seasonal staffing. It would also require an increase to the CSFY budget to process the anticipated increased volumes of woody biomass. BCPOS will have internal discussions to determine the feasibility.

One of the things noted this year is that there is some inconsistency with estimating volumes. As stated in the intro, volumes are approximate. Even small underestimating of each load adds up over the course of 9,000 loads. This year's slash volume numbers were recorded as being lower than last year's volumes even though there was an increase of 28 semi loads. The only way to truly measure tonnage is to have scales at the yards which is not feasible at this time.

Following the acknowledgments, individual data and results for each CFSY location are summarized.

Acknowledgments:

We would like to recognize POS Forestry Staff, Nederland Transfer Station Staff, and the Wildfire Partners Staff for their support with staffing the yards during the summer when CFSY staff had additional commitments. We would also like to thank the Nederland Road District Crew for their equipment support.

Nederland CFSY seasonal forestry technician and grinding operations: Kevin Pierce

Meeker Park CFSY seasonal forestry technician and grinding operations: Cameron Kennedy
Data collection app: Simone Baring-Gould

Transporting excavator: Pat Feeney and Dean Rausch

Editing annual report and newsletter: Stefan Reinold

Outreach: Vivienne Jannatpour

Website and monthly newsletter: Nick Brockman

CFSY map: Erik Hinkley

CFSY signs: Mary Rolf

Nederland CFSY

Trends:

The Nederland CFSY opened on June 3. Residents of Boulder County were eagerly waiting opening day. Fifty loads were checked in during the first two hours. A total of 151 loads was received on this day. Oct. 17 was the original closing date. The yard reopened on Oct. 28 and closed again for the season on Nov. 21. The Nederland CFSY was closed for the July 4 holiday. On Wednesday, Sept. 9 the yard was closed because of snow. Otherwise, it was open four days a week during the year, for a total of 94 days of operation. The average daily load count was 59.5 per day, totaling 5,597 loads for this year's operational period (**Figures 7 and 8**). Days of operation were the same compared to 2019, but the load count increased by 1,537 compared to 2019.

284 new properties registered this year and a total of 1,087 properties used the yard.

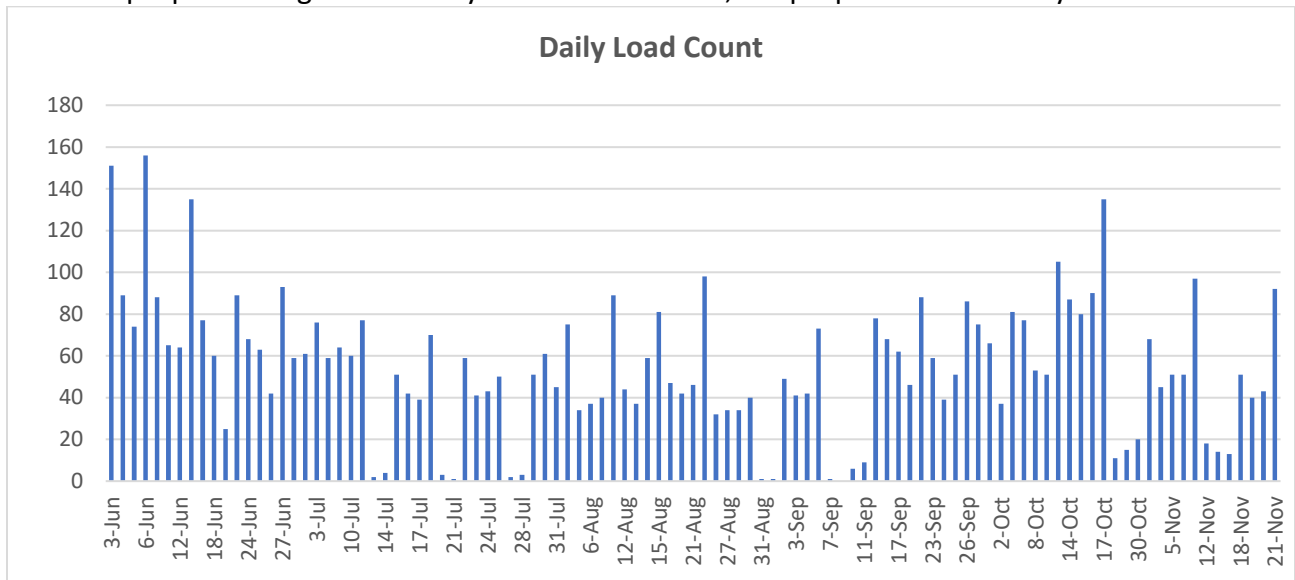


Figure 7: The daily load count for the Nederland CFSY.



Figure 8: A typical day at the Nederland CFSY.

Origin of Material:

Boulder County residents accounted for 90% of the users and 88% of the woody biomass total tons transported to the yard (Table 8).

Table 8: Origin of material from the Nederland CFSY

County	Users by County	Percentage (Users) by County	Percentage Load Count	Total Tons by County	Percentage (Tons) by County	Percentage of Yard Debris Volume
Boulder	981	90.2%	93.5%	860.4	88.3%	93.2%
Gilpin	42	3.9%	2.9%	74.2	7.6%	2.5%
Jefferson	47	4.3%	3.1%	36.3	3.7%	2.9%
Larimer	17	1.6%	0.4%	3.6	0.4%	1.4%

Wildfire Partners continued its program to pick up woody biomass for participants in the program and transport it to the yard. Table 9 summarizes the material removed by user type.

Table 9: Type of material removed by user type for the Nederland CFSY.

User Type	Load Count	Slash Tons	Wood Tons	Chip Tons	Yard Debris Volume	Woody Biomass Total Tons
Private	91.9%	90.5%	88.8%	9.5%	92.1%	78.6%
Contractor	6.4%	9.3%	11.2%	56.5%	7.3%	16.4%
Wildfire Partners	1.6%	0.2%	0.0%	34.0%	0.6%	5.0%

Reason for Removal:

Fire mitigation (88.9%) was the primary reason for removal for Nederland CFSY users (**Table 10**), resulting in the highest amount of slash (90.4%), wood (89.1%), and yard debris (91.0%) removed. Noxious Weed Management had the second highest load count (2.8%) and the second highest volume of yard debris (4.6%).

Table 10: Reasons for removal of woody biomass delivered to the Nederland CFSY.

Primary Reason for Removal	Load Count	Slash Tons	Wood Tons	Wood Chip Tons	Yard Debris Volume
Fire Mitigation/ D-Space	88.9%	90.4%	89.1%	96.7%	91.0%
Noxious Weed Management	2.8%	0.0%	0.0%	0.0%	4.6%
Yard Cleaning	2.4%	0.7%	1.0%	0.0%	3.9%
Wind Throw/Wind Damage	1.9%	2.6%	0.3%	0.0%	0.0%
Construction	1.2%	2.6%	0.2%	1.7%	0.0%
Forest Health	0.8%	1.2%	1.3%	0.0%	0.0%
Other	0.7%	0.9%	0.3%	0.0%	0.4%
Cold Springs Fire Clean-Up	0.7%	0.8%	5.9%	0.0%	0.0%
Bark Beetles	0.2%	0.3%	1.3%	0.0%	0.0%
Hazard Tree	0.2%	0.2%	0.5%	0.0%	0.0%
Wildfire Partners	0.1%	0.3%	0.0%	1.7%	0.0%

Volume Totals:

This year's slash volume was recorded lower than last year's volumes although the figures are misleading. Overall recorded tonnage is down by 11.5 tons because slash volume total was down 79.4 tons (**Table 11**). However, a total of 51 semi loads of ground woody biomass was hauled off site to several composting facilities, an increase of 17 semi loads from 2019. These numbers mean that we underestimated our volumes in 2020.

Table 11: Removal volumes for the Nederland CFSY.

Yard	Slash Tons	Wood Tons	Chip Tons	Noxious Weed 40 Cubic Yard Roll-offs Tons
Nederland	673.5	160.6	140.3	63.6

Total material processed for the 2020 Season: 1038.0

Meeker Park CFSY

Trends:

Just like the Nederland CFSY, there was much anticipation of the opening of the Meeker Park yard. The yard opened on June 17, and the load count on this sunny day was 136 loads. The closing date was on Oct. 10. The last five days of operations had five straight load counts of 100-plus loads. The Meeker Park CFSY was also closed on July 4, and Sept. 9 due to snow. There was a total of 66 days of operation, with an average load count of 60.1 loads per day, which totals 3,966 loads for this operational period, an increase of 1,870 loads from 2019 (Figures 9, 10, & 11).

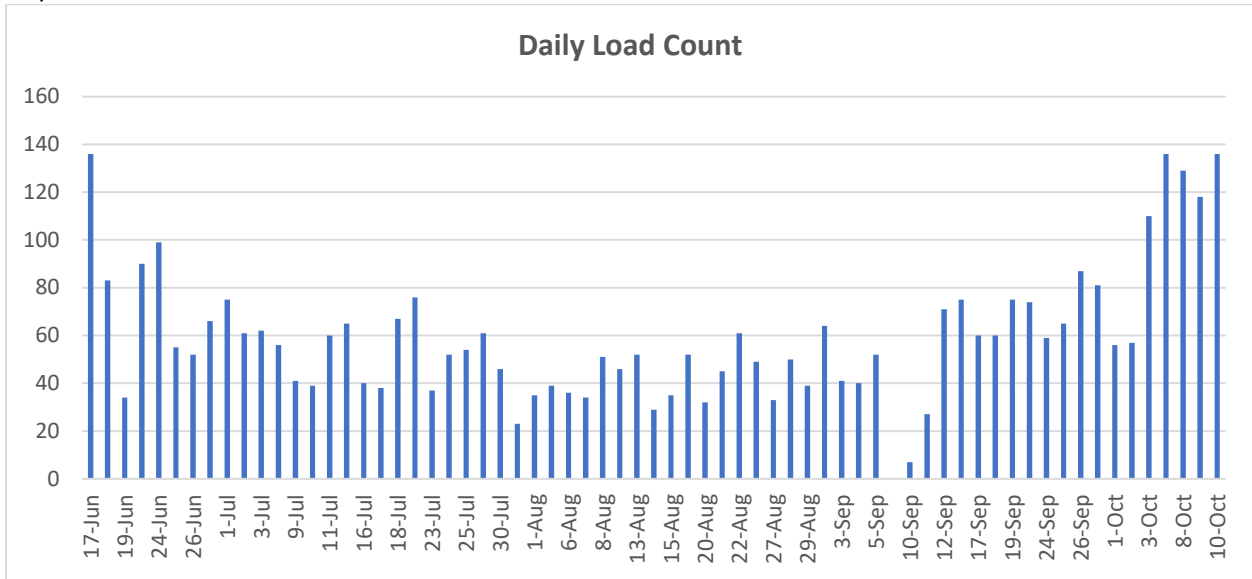


Figure 9: Daily load counts for the Meeker CFSY.



Figure 10 : Left --Meeker Park CFSY resident Elk, Right -- Meeker Park CFSY typical day.



Figure 11: Residents unloading at the Meeker Park CFSY.

Origin of Material:

Larimer County residents accounted for 58.9% of the users and 54.8% of the load count. These numbers surpassed the Boulder County resident’s usage of 40% and load count of 45.1%. Boulder County residents account for 53.2% of the total tons of woody biomass. Larimer County residents account for 74.8% of the yard debris volume (**Table 12**). Larimer County residents account for 292 new users out of the total 353 new users in 2020.

Table 12: County origin of the Meeker Park CFSY.

County	Users by County	Percentage (Users) by County	Percentage Load Count	Total Tons by County	Percentage (Tons) by County	Percentage of Yard Debris Volume
Boulder	339	40.9%	45.1%	285.0	53.2%	25.2%
Larimer	488	58.9%	54.8%	250.4	46.8%	74.8%
N/A	1	.2%	0.0%	0.2	0.0%	0.0%

Private landowners were the primary patrons of the Meeker Park Sort Yard (**Table 13**) and, consequently, generated most of the slash volume. Contractors brought in the most chip tons.

Table 13: Biomass percentages based on user type for the Meeker Park CFSY.

User Type	Load Count	Slash Tons	Wood Tons	Chip Tons	Yard Debris Volume	Woody Biomass Total Tons
Private	91.6%	80.1%	79.1%	12.9%	94.7%	75.8%
Contractor	8.2%	19.9%	20.9%	73.9%	5.3%	23.4%
Wildfire Partners	0.2%	0.0%	0.0%	13.2%	0.0%	0.8%

Reason for Removal:

Fire mitigation (91%) was the primary reason for removal, resulting in the highest amount of slash (88.2%), wood volume (92.7%) and yard debris (96.4%) (Table 14). Construction was the second highest reason for removal, at 1.7% of the load counts, and slash tons (3.9%).

Table 14: Reason for removal of biomass by Meeker Park CFSY users.

Primary Reason for Removal	Load Count	Slash Tons	Wood Tons	Wood Chip Tons	Yard Debris Volume
Fire Mitigation/ D-Space	91.0%	88.2%	92.7%	98.3%	96.4%
Construction	1.7%	3.9%	0.6%	0.0%	0.0%
Hazard Tree	0.4%	0.5%	1.4%	0.0%	0.0%
Bark Beetles	0.3%	0.4%	1.2%	0.0%	0.0%
Noxious Weed Management	1.6%	0.0%	0.0%	0.0%	2.1%
Wildfire Partners	0.3%	0.7%	0.0%	1.7%	0.0%
Wind Throw/Wind Damage	1.9%	2.6%	0.5%	0.0%	0.0%
Yard Cleaning	1.0%	0.5%	1.3%	0.0%	1.1%
Forest Health	0.7%	1.3%	2.3%	0.0%	0.0%
Other	1.2%	2.1%	0.1%	0.0%	0.4%

Volume Totals:

Slash volume was up 36.3 tons; wood volume was up 28.2 tons; and chip volume was up 4.1 tons from the previous year. Overall volume increased 80.8 tons from 2019, which includes tonnage from roll-offs. A total of 26 semi-truck loads of ground mulch was hauled to compost facilities. Rocky Mountain Botanic Gardens, located in Lyons, also received two loads of mulch this past summer. Three loads of wood mulch were ground for Cal- Wood fire rehab material, totaling 31 semi-truck loads for the season.

Table 15: Volume of biomass collected at the Meeker Park CFSY.

Yard	Slash Tons	Wood Tons	Chip Tons	Noxious Weed 40 Cubic Yard Roll-offs Tons
Meeker Park	396.4	106.8	32.3	38.8

Total material processed for the 2020 Season: 574.3

Appendix A

Appendix A demonstrates operational costs for grinding at both yards for 2020. This past year, slash was ground and loaded directly into live floor vans, removing the need to have a loader on site. An average load weighs 22 tons.

Mulch Transportation Cost and Tip Fees					
Yard	Number of Truck Loads	Hauling Cost	Tip Fees	Other Cost	Invoice Total
Meeker Park	31	\$21,187.50	\$1,588.90	\$727.39	\$23,477.39
Nederland	51	\$36,848.43	\$716.00	\$1,523.98	\$39,088.41
Totals	82	\$58,035.93	\$2,304.90	\$2,251.37	\$62,565.80

Note the figures do not count fuel and salaries to transport/mobilize the Boulder County grinder and

excavator, equipment operational costs, or repair costs.

Community Forestry Sort Yard Budget \$90,000

Yard	Total Spent	Percent Spent	Percent of Yearly Load Count	Percent of Yearly Woody Biomass	Percent of Yard Debris Volume	Percent of 40-Cubic Yard Roll-offs
Meeker Park	\$35,291.06	40.4%	41.5%	35.5%	50.0%	40.7%
Nederland	\$52,034.07	59.6%	58.5%	64.5%	50.0%	59.3%
Grand Total	\$87,325.13	100.0%	100.0%	100.0%	100.0%	100.0%

Break Out of Budget Items		
Vendor	Service	Total Spent
JRP Transport LLC	Transportation & tip fees for yard debris	\$60,656.90
Western Disposal Services	Transportation of noxious weeds roll-offs	\$14,629.73
Sunbelt Rental	Skid steer and excavator rental*	\$4,174.81
Air-O-Pure	Rental/ cleaning Port-o-Potties	\$1,620.00
National Fire Fighter Corp	Replacement fire hose for the yards	\$1,215.00
Synergy Semiochemicals Corp	Ips Lures for both yards	\$1,119.50
Grainger	Safety vests and helmets	\$1,089.54
Renewable Fiber INC	Tip fees for pine needle disposal	\$1,002.50
Select Material LLC	Tip fees for mulch disposal	\$906.40
General Operating Supplies	Items for day to day operations	\$910.75
Community Forestry Sort Yard Total Spent		\$87,325.13

Rented a skid steer for the Ned yard and an excavator for the Meeker Park yard when these pieces of equipment were in for repairs.

Direction of Travel for Nederland CFSY 2020
Summary of traffic flow on Ridge Road **leading** to the sort yard

Week	Dates	West (Turned right into the yard)	East (Turned Left into the yard)	Grand Total	Notes
Week 1	June 3-6	370	100	470	Opening Week
Week 2	June 10-13	277	75	352	
Week 3	June 17-20	206	45	251	
Week 4	June 24-27	213	53	266	
Week 5	July 3-4	159	37	196	<i>Closed July 4</i>
Week 6	July 8-11	204	56	260	
Week 7	July 13-18	179	29	208	<i>WFP loads on Mon& Tues</i>
Week 8	July 20-25	157	40	197	
Week 9	July 27-Aug 1	205	32	237	
Week 10	Aug 5-8	166	34	200	
Week 11	Aug 12-15	178	43	221	
Week 12	Aug 19-22	205	28	233	
Week 13	Aug 26-29	122	18	140	
Week 14	Aug 31-Sept 5	180	27	207	
Week 15	Sept 7-12	76	18	94	Yard closed Sept 9, snow
Week 16	Sept 16-19	228	36	264	
Week 17	Sept 23- 26	200	35	235	
Week 18	Sept 30-Oct 3	216	43	259	
Week 19	Oct 7-10	243	43	286	
Week 20	Oct 14-17	300	92	392	<i>Oct 17, original closing day</i>
Week 21	Oct 28-31	91	23	114	<i>Oct 28, yard reopened</i>
Week 22	Nov 4-7	211	33	244	
Week 23	Nov 11-14	40	5	45	<i>Closed Nov 11 Veterans Day</i>
Week 24	Nov 18-21	179	47	226	<i>Last Day Nov 21</i>
Grand Total		4605	992	5597	

- Note: Wednesday thru Saturday operating schedule, open 9 a.m. -5p.m.

Yearly Load Count

Year	Operational Days	Load Count	Daily Average
2008	52	1309	25.1
2009	130	2991	23.0
2010	102	2747	26.9
2011	118	3521	29.8
2012	119	6585	55.3
2013	112	3424	30.6
2014	187	4722	25.3
2015	187	4688	25.1
2016	192	6509	33.9
2017	169	6945	41.1
2018	174	6878	39.5
2019	178	6156	34.7
2020	160	9563	59.8
Totals	<i>1880</i>	<i>66038</i>	<i>35.1</i>
Yearly average	<i>144.6</i>	<i>5079.8</i>	<i>35.1</i>