

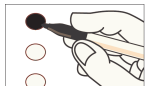
Ballot Type: Democratic

Official Democratic Ballot for the Primary Election

Boulder County, Colorado - Tuesday, June 28, 2022

Molly Fitzpatrick
Clerk and Recorder

Instructions for voting:



- 1) Mark your ballot with a black or blue ballpoint pen.
- 2) To vote for your choice in each contest, completely fill in the oval provided to the right of your choice. If you vote for more than the maximum number of allowed choices in a race, your votes in that race will not be counted.
- 3) If you tear or make a mistake voting, please request a replacement ballot by calling 303.413.7740. See the Voter Instructions insert for more information.

WARNING: Any person who, by use of force or other means, unduly influences an eligible elector to vote in any particular manner or to refrain from voting, or who falsely makes, alters, forges, or counterfeits any mail ballot before or after it has been cast, or who destroys, defaces, mutilates, or tampers with a ballot is subject, upon conviction, to imprisonment, or to a fine, or both. Section 1-7.5-107(3)(b), C.R.S.

Federal Offices	State Offices
United States Senator (Vote for One) <div style="text-align: right; padding-right: 20px;">Michael Bennet <input type="radio"/></div>	State Representative - District 19 (Vote for One) <div style="text-align: right; padding-right: 20px;">Jennifer Lea Parenti <input type="radio"/></div>
Representative to the 118th United States Congress - District 2 (Vote for One) <div style="text-align: right; padding-right: 20px;">Joe Neguse <input type="radio"/></div>	State Representative - District 49 (Vote for One) <div style="text-align: right; padding-right: 20px;">Judy Amabile <input type="radio"/></div>
County Offices	
State Offices Governor (Vote for One) <div style="text-align: right; padding-right: 20px;">Jared Polis <input type="radio"/></div>	County Commissioner - District 3 (Vote for One) <div style="text-align: right; padding-right: 20px;">Ashley Stolzmann <input type="radio"/></div> <div style="text-align: right; padding-right: 20px;">Elaina Shively <input type="radio"/></div>
Secretary of State (Vote for One) <div style="text-align: right; padding-right: 20px;">Jena Griswold <input type="radio"/></div>	County Clerk and Recorder (Vote for One) <div style="text-align: right; padding-right: 20px;">Molly Fitzpatrick <input type="radio"/></div>
State Treasurer (Vote for One) <div style="text-align: right; padding-right: 20px;">Dave Young <input type="radio"/></div>	County Treasurer (Vote for One) <div style="text-align: right; padding-right: 20px;">Paul Weissmann <input type="radio"/></div>
Attorney General (Vote for One) <div style="text-align: right; padding-right: 20px;">Phil Weiser <input type="radio"/></div>	County Assessor (Vote for One) <div style="text-align: right; padding-right: 20px;">Cynthia Braddock <input type="radio"/></div>
State Board of Education Member - At Large (Vote for One) <div style="text-align: right; padding-right: 20px;">Kathy Plomer <input type="radio"/></div>	County Sheriff (Vote for One) <div style="text-align: right; padding-right: 20px;">Curtis Johnson <input type="radio"/></div> <div style="text-align: right; padding-right: 20px;">David D. Hayes <input type="radio"/></div>
State Senator - District 15 (Vote for One) <div style="text-align: right; padding-right: 20px;">Janice Marchman <input type="radio"/></div>	County Surveyor (Vote for One) <div style="text-align: right; padding-right: 20px;">Lee Stadele <input type="radio"/></div>
State Representative - District 10 (Vote for One) <div style="text-align: right; padding-right: 20px;">Edie Hooton <input type="radio"/></div>	County Coroner (Vote for One) <div style="text-align: right; padding-right: 20px;">Emma R. Hall <input type="radio"/></div>
State Representative - District 11 (Vote for One) <div style="text-align: right; padding-right: 20px;">Karen McCormick <input type="radio"/></div>	
State Representative - District 12 (Vote for One) <div style="text-align: right; padding-right: 20px;">Tracey Bernett <input type="radio"/></div>	