

Boulder County Community Forestry Sort Yard 2021 Annual Report

Written by Wayne Harrington



Introduction:

This is the 14th year that Parks and Open Space has managed the Community Forestry Sort Yard (CFSY) program. The mission of the CFSY program is to inspire landowners to actively manage their forested properties. This annual report is divided into three main sections: combined data, Nederland CFSY data, and Meeker Park CFSY data. The report covers user trends, origins of material, reasons for removal, and volumes of removed material. The volume figures in this report are approximate and include materials sorted and processed at both sort yard sites. Appendix A contains more detailed information on transportation costs, tip fees, budget information, direction of travel along Ridge Road information for the Nederland Yard and contains a comprehensive load count from 2008 to present.

Community Forestry Sort Yard Mission:

Inspire Boulder County residents to actively manage their forested properties

Community Forestry Sort Yard Goals:

- Provide Boulder County forest landowners a collection site for their woody biomass
- Divert all acceptable material from the landfill
- Utilize the wood biomass to its highest possible value
- Help residents reduce fuel volumes on their forested property
- Educate the private landowner on the best possible forestry management practices
- Provide educational material on best practices for defensible space
- Work on being creative to reduce the rate of increased operational cost as volume intake increases

Education and outreach are a large part of the program. Unfortunately, there were no Wildfire Awareness Days at either yard because of COVID-19 restrictions. We were able to continue a monthly newsletter, handout brochures, and managed a twitter account.

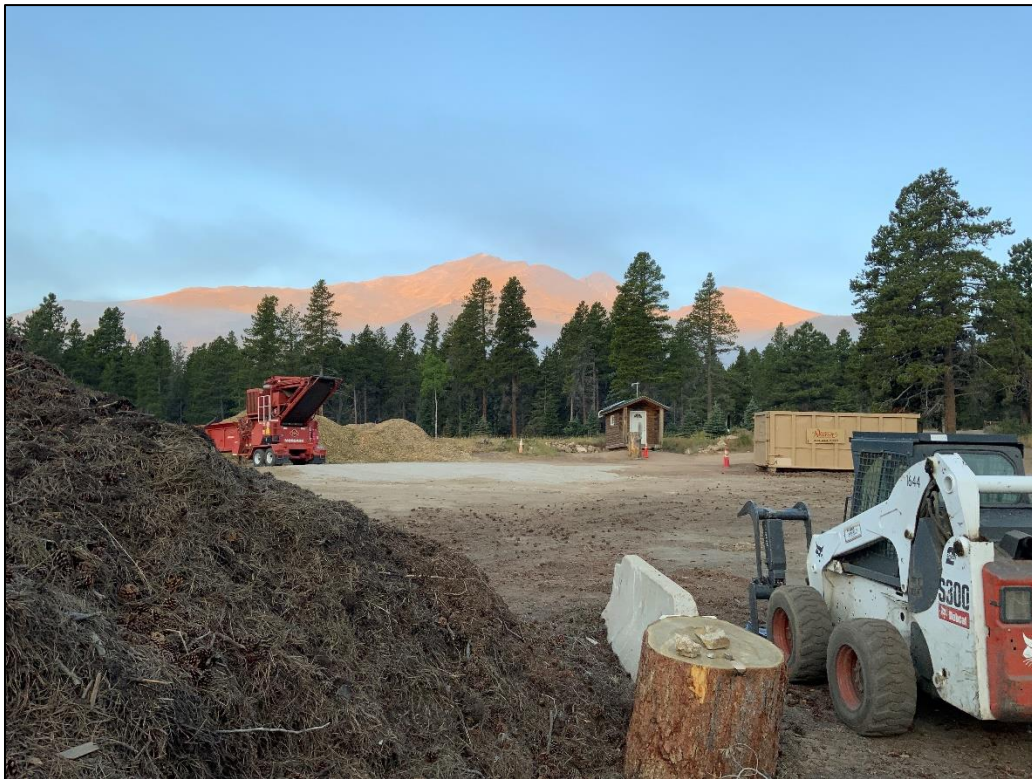


Figure 1: Sunrise at the Meeker Park CFSY in October.

Combined CFSY Data

Trends:

The total load count for 2021 was 8,439 loads, which is the second highest load count for a season. There were 537 new property locations in 2021: 344 from Meeker Park, 193 from Nederland. In total, there were 1,972 different property locations, with an average of 4.3 loads per property. For reference, in 2020 there were 1,875 different property locations, with an average of 5.1 loads per property. Table 1 below tracks the load counts from 2017-2021. This past year had the highest days of operation to date, which caused daily average to be close to the five-year average. Refer to Appendix A for data going back to 2008.

Year	Operational Days	Load Count	Daily Average
2017	169	6945	41.1
2018	174	6878	39.5
2019	178	6156	34.6
2020	160	9563	59.8
2021	195	8439	43.3
5- Year Average	175.2	7596.2	43.4

Table 1: Load Counts Per Day.



Figure 2: Parks Portable Sawmill and Future Biomass Fuel at the Meeker Park CFSY.

Table 2 demonstrates the breakdown between the two sort yards during 2021 based on percentage of load count and slash and wood volume/weights. Operational days and percentage of operational days were also added to provide comparisons between the two yards. Nederland

CFSY accounted for 52% of the total load count and 53% of the total roll-off weight. Meeker Park CFSY accounted for 80% of total wood tons.

Table 2: CFSY Yard Comparisons.

Yard	Percent of Operational Days	Percent of Load Count	Percent of Slash Tons	Percent of Wood Tons	Percentage of Chip Tons	Percent of Yard Debris Volume	Percent of 40-Cubic Yard Roll-offs
Meeker Park	47.2%	48.7%	54.4%	80.8%	70.5%	58.8%	47.0%
Nederland	52.8%	51.3%	45.6%	19.2%	29.5%	41.2%	53.0%

Origin of Material:

Table 3 below summarizes material and amounts based on the county of origin. Outside of Boulder County, Larimer County was the origination for the most material, with roughly 33% of total tons, an increase of 17% from 2020.

Table 3: Origin of material by county.

County	Properties by County	Property Percentage by County	Percentage Load Count	Total Tons by County	Percentage (Tons) by County	Percentage of Yard Debris Volume
Boulder	1295	64.5%	69.1%	1110.0	61.5%	57.8%
Larimer	609	30.4%	26.7%	605.5	33.6%	39.1%
Gilpin	41	2.1%	2.1 %	44.4	2.5%	1.5%
Jefferson	54	2.7%	2.0%	41.8	2.3%	1.5%
Adams	1	0.0%	0.0%	0.1	0.0%	0.0%
Clear Creek	1	0.0%	0.0%	0.4	0.0%	0.0%
Weld	1	0.0%	0.0%	0.2	0.0%	0.0%
N/A*	5	0.3%	0.1%	1.7	0.1%	0.1%

* Incomplete Data

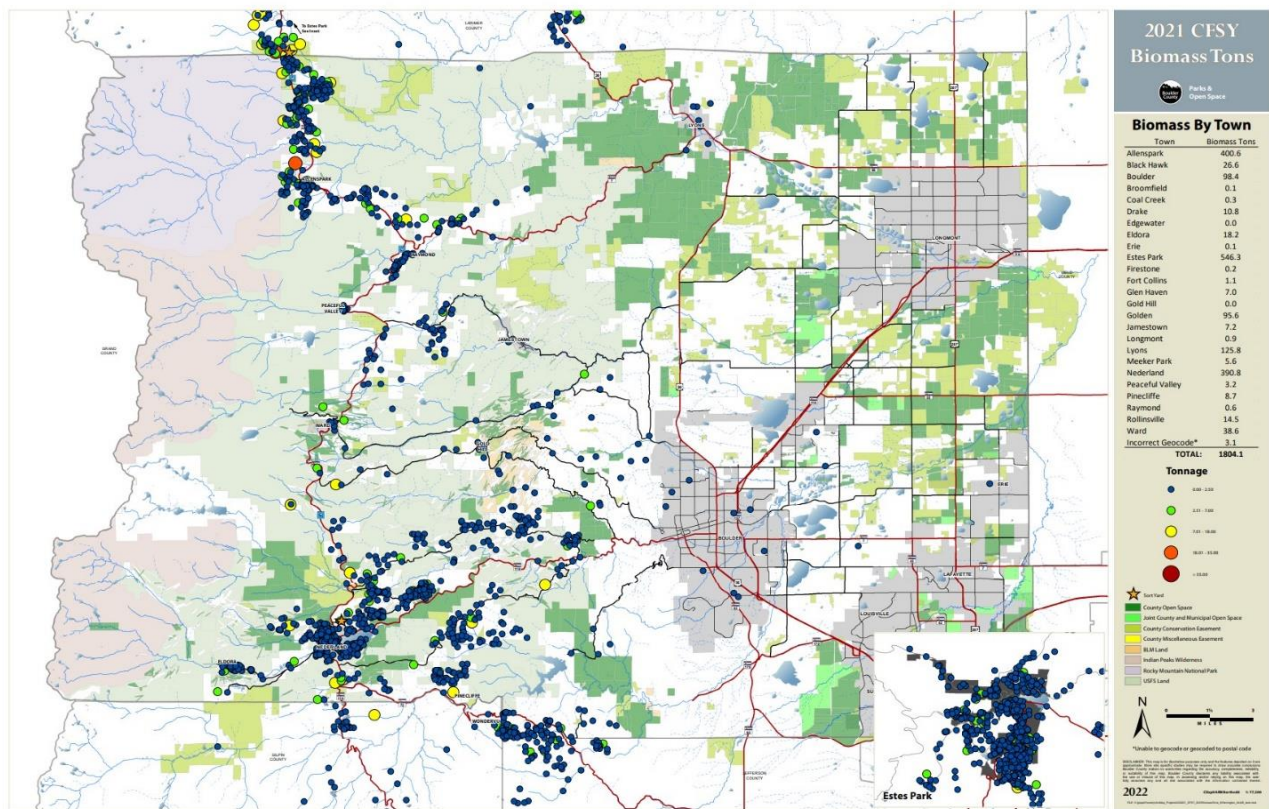


Figure 3: 2021 CFSY Biomass Tons Map. (not to scale)

The 2021 CFSY Biomass Tons Map (Figure 3) shows geographically where most of the loads originated. Locations are tracked by using our property I.D. numbers that are attached to the physical address, not the home owner.

Reason for Removal:

Reason for removal is tracked to find out why residents are bringing biomass to the sort yards. The list below contains the eleven primary categories:

1. Fire Mitigation
 - a. Includes any material removed within the home ignition zone (HIZ), 100 feet adjacent to structures.
 - b. Any vegetation that will affect intensity of wildland fire that approaches a HIZ. This includes removal of trees, limbs, pine needles and old slash piles.
2. Noxious Weed Management
3. Yard Cleaning

Other: Low volume, not a hot topic or was not on the current drop-down list.
4. Wildfire Partners
5. Forest Health
6. Wind Throw/ Wind Damage
7. Hazard Tree

8. Bark Beetles
 - a. Mountain pine beetle
 - b. Ips spp.
 - c. Spruce beetle

9. Construction

10. Cold Springs Fire clean-up

This category was tracked after the Cold Springs Fire to see how much material can be attributed to the fire.

Table 4 below shows the tallies for the different types of reasons for removal. Fire mitigation was the primary reason, resulting in the largest amount of slash (92.4%), wood volume (98.5%), wood chip volume (89.6%), and yard debris volume (81.7%). Noxious weed management was the second highest reason, representing 15.3% of yard debris volume.

Table 4: Percentage of primary reason removal.

Primary Reason for Removal	Load Count	Slash Tons	Wood Tons	Wood Chip Tons	Yard Debris Volume
Fire Mitigation	85.3%	92.4%	98.5%	89.6%	81.7%
Noxious Weed Management	7.5%	0.1%	0.0%	0.0%	15.3%
Yard Cleaning	1.6%	0.6%	0.2%	0.0%	2.3%
Other	1.2%	1.3%	0.0%	0.0%	0.5%
Wildfire Partners	1.1%	0.5%	0.0%	9.3%	0.1%
Forest Health	1.0%	1.9%	0.2%	0.0%	0.0%
Wind Throw/Wind Damage	0.8%	1.1%	0.3%	0.0%	0.0%
Hazard Tree	0.5%	0.5%	0.1%	0.5%	0.1%
Bark Beetles	0.5%	0.6%	0.4%	0.0%	0.0%
Construction	0.3%	0.5%	0.0%	0.1%	0.1%
Cold Springs Fire Clean-Up	0.3%	0.4%	0.0%	0.4%	0.0%

Grinding Operations:

Grinding operations are separated into three categories: Biomass Fuel, CFSY Slash, and Community Grinding Events.

Biomass Fuel: There were 12 loads of biomass fuel ground in 2021. Five loads were sent to the Boulder County Jail, and seven loads were sent to OSTC in Longmont. Average biomass fuel per load was 118 cubic yards.

CFSY Slash: The grinder was transported between yards during the summer months in order to keep the sites clear and open for receiving more slash. Slash was ground directly into semi-trucks this year in order to reduce handling time. The Meeker Park yard produced 48 semi-truck loads, and the Nederland yard produced 42 semi-truck loads, for a total of 90 semi-trucks loads of ground slash, an increase of eight loads from 2020. See Appendix A for breakdown of cost by yard and charges.

Community Grinding Events: There were five community grinding events in 2021.

- Road maintenance slash pile: late January, approximately 30 tons processed
- Lake of the Pines: mid-May, approximately 40 tons processed
- Jamestown: late June, approximately, five tons processed
- Big Elk Meadows: mid-August, approximately 30 tons processed
- Town of Lyons: late September, approximately six tons processed



Figure 4: Left, Community Grinding at Town of Lyons, Right, Grinding at the Nederland yard.

In 2021, the grinder operated for 195 hours, filling a total of 102 semi-loads that were transported off site.

Pine Needles:

Pine needles are reground and directly loaded into semi-trucks. Besides being faster than loading with the excavator bucket, the magnet on the grinder removes all the small household metal items that have fallen on the ground over the years, averaging about five pound of metal per load. Nederland CFSY intake of pure pine needle was down this year, and all pine needles went to A-1 Organics. Meeker Park CFSY produced two semi-truck loads. Some pine needles were used to top off roll-offs before they were hauled off site.

Bagged Material/ Noxious Weed Collection:

Bagged material and noxious weed collection (Table 5 and Figure 5) continues to gain momentum, with a total of 35- 40 cubic yard roll-off containers. For the fourth year in a row, volume significantly increased from the previous year. There was an overall increase in cost of \$4,730.81 this year to complete the noxious weed collections.

The noxious weed roll-offs were sent to A-1 Organics in Weld County for composting. The roll-offs were topped off with pine needles, so they were sent down the hill full before the 30-day limit on site.

Table 5: Bagged material roll-off information.

Yard	Bagged Material	Pine Needle Filler	Total Roll-offs	Total Roll-off Tons	Cost per Roll-off	Total Cost
Meeker Park	17.1	0.9	18	73.4	\$604.71	\$10,884.78
Nederland	15.3	1.7	17	82.8	\$498.62	\$8,476.54
Totals	32.4	2.6	35	156.2	N/A	\$19,360.54



Figure 5: Left, Pine needles in the foreground; Right, roll-off flowing with lawn bags.

Volume Numbers:

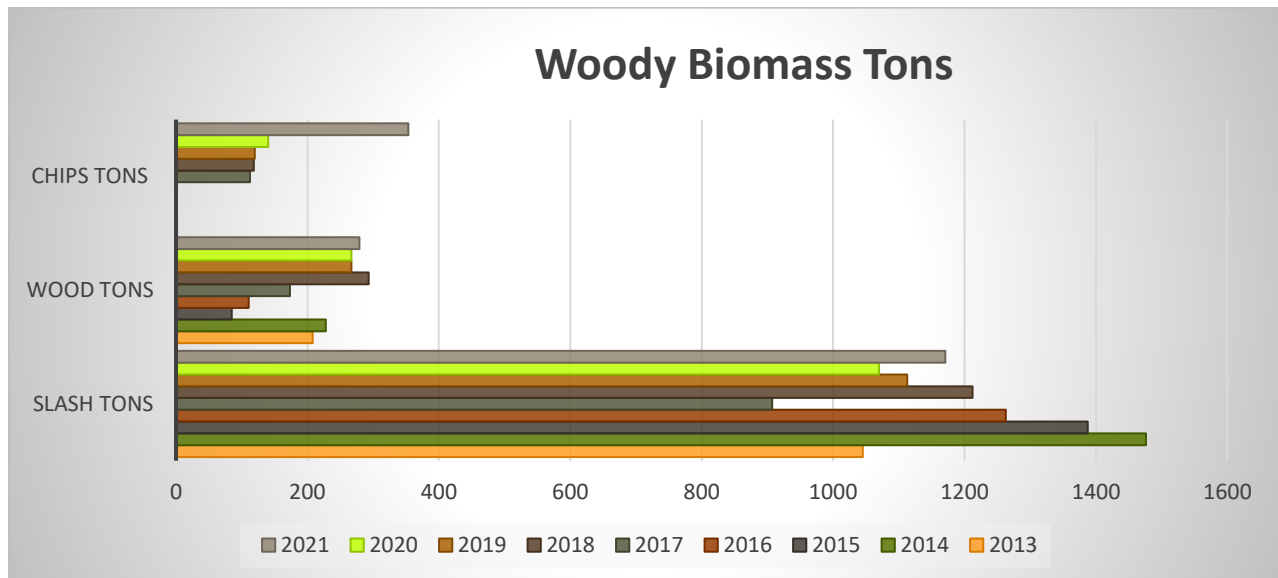


Figure 6: Woody biomass collected at sort yards from the past nine years.

Figure 6 above shows the woody biomass collected at the sort yards for the past nine years. As stated at the beginning of the report, volumes are estimated.

Table 6 summarizes the biomass tonnage from the different yards.

Table 6: Summary of all biomass removed from the yards.

Yard	Slash Tons	Wood Tons	Chip Tons	Noxious Weed 40 Cubic Yard Roll-offs Tons
Meeker Park	636.9	225.9	249.2	73.4
Nederland	534.0	53.8	104.3	82.8
Totals	1,170.9	279.7	353.5	156.2

Total material processed for the 2021 Season: 1,960.3 Tons

There was an increase of 347.8 tons of woody biomass collected in 2021.

Table 7 shows the number of semi-truck loads hauled from both sort yards over the years. This includes all biomass fuel loads from in-house projects. 2021 set a new high load count, with 102 semi-truck loads.

Table 7: Semi-truck usage over past thirteen years.

Semi-Truck Loads				
Year	Yard		Total Loads	Notes
	Meeker Park	Nederland		
2008	N/A	Yard didn't exist	N/A	All slash was processed with an Air Curtain Burner.
2009	N/A	Yard didn't exist	N/A	
2010	N/A	8	8	A-1 Organics did the grinding and hauling at the Nederland Yard.
2011	N/A	15	15	Oxford and Hagman did grind and hauling at both yards. Air Curtain Burner sold in 2014.
2012	42	33	75	
2013	16	30	46	
2014	22	21	43	
2015	12	29	41	Renewable Fiber contract for hauling, expired at the end of 2019.
2016	18	38	56	
2017	24	39	63	
2018	27	41	68	
2019	29	49	78	
2020	31	51	82	JRP Transportation
2021	49	53	102	

Closing Thoughts:

The Nederland yard opened in April for the first time in several years. The weather was wet and cold during the first week. There was a total of 32 loads for the first week. This low volume made it harder to train both new yard operators in 2021, since they couldn't get a feel for the job with the lack of loads. The Meeker Park CFSY opened two weeks later to better weather. The Nederland CFSY will be going back to an early May opening in 2022, bumping back the Meeker Park CFSY opening to mid- to late May.

Once the weather warmed up and conditions got drier, usage increased, and the 2021 season saw the second-highest load count. There were several large projects in the Meeker Park area that caused highest volume to date. As a result, the 2021 budget went over by approximately \$20,000, with a new high in semi-truck loads and roll-offs for the season. For a more complete breakdown of the 2021 budget, see Appendix A.

We are expecting additional increased usage during the 2022 season. The budget will remain at \$90,000. We are working with the Town of Estes Park to find additional funding for the program.

Following the acknowledgements, each CFSY location has its individual data and results summarized.

Acknowledgments:

We would like to recognize Parks and Opens Space Forestry Staff, Nederland Transfer Station Staff, and the Wildfire Partners Staff for their help with staffing, as well as the Nederland Road District Crew for their equipment support.

Nederland CFSY seasonal forestry technician and grinding operations: Dan Buelow

Meeker Park CFSY seasonal forestry technician and grinding operations: Jon Clark

Data collection app: Simone Baring-Gould

Transporting excavator: Pat Feeney and Dean Rausch

Outreach: Vivienne Jannatpour

Website and monthly newsletter: Nik Brockman

CFSY map: Erik Hinkley

CFSY signs: Mary Rolf

Editing annual report and newsletter: Stefan Reinold

Editing annual report: Shane Milne

Nederland CFSY

Trends:

The Nederland CFSY was scheduled to open on April 28 but was delayed a day because of significant snowfall on April 27. The yard opened on April 29 with a total of five loads for the day and a total of 32 loads for the opening week. Otherwise, it was open four days a week during the year, for a total of 103 days of operation. The average daily load count was 42 per day, 4,329 loads for this year's operational period (Figure 7 and 8).

183 new properties registered this year, and a total of 1,043 properties used the yard.

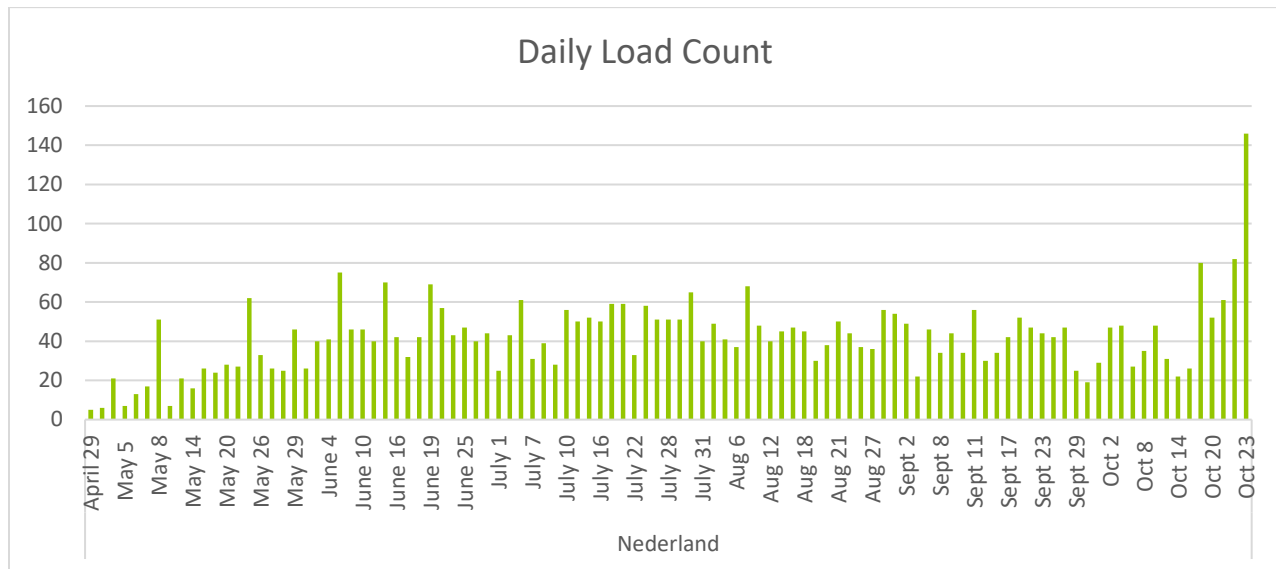


Figure 7: The daily load count for the Nederland CFSY.



Figure 8: A typical day at the Nederland CFSY.

Origin of Material:

Boulder County residents accounted for 90% of the users and 87% of the woody biomass total tons transported to the yard (Table 8).

Table 8: Origin of material from the Nederland CFSY

County	Users by County	Percentage (Users) by County	Percentage Load Count	Total Tons by County	Percentage (Tons) by County	Percentage of Yard Debris Volume
Boulder	942	90.5%	91.9%	605.2	87.4%	92.5%
Gilpin	41	3.9%	4.1%	44.4	6.4%	3.7%
Jefferson	54	5.1%	4.0%	41.8	6.0%	3.6%
Larimer	2	0.2%	0.0%	0.0	0.0%	0.2%
Adams	1	0.1%	0.0%	0.1	0.0%	0.0%
Clear Creek	1	0.1%	0.0%	0.4	0.1%	0.0%
Weld	1	0.1%	0.0%	0.2	0.0%	0.0%

Wildfire Partners continued its curb-side chipping program to pick up woody biomass for participants in its program and transporting it to the yard. Table 9 summarizes the material removed by user type.

Table 9: Type of material removed by user type for the Nederland CFSY.

User Type	Load Count	Slash Tons	Wood Tons	Chip Tons	Yard Debris Volume	Woody Biomass Total Tons
Private	90.5%	88.6%	87.4%	7.7%	93.3%	76.4%
Contractor	7.5%	11.0%	12.4%	49.9%	6.2%	16.9%
Wildfire Partners	2.0%	0.4%	0.1%	42.4%	0.5%	6.7%

Reason for Removal:

Fire mitigation (79.5%) was the primary reason for removal for Nederland CFSY users (Table 10), resulting in the highest amount of slash (88.0%), wood (94.9%), and yard debris (72.6%) volume removed. Noxious Weed Management was the second highest load count (2.8%) and second highest volume of yard debris (21.6%).

Table 10: Reasons for removal of woody biomass delivered to the Nederland CFSY.

Primary Reason for Removal	Load Count	Slash Tons	Wood Tons	Wood Chip Tons	Yard Debris Volume
Fire Mitigation	79.5%	88.0%	94.9%	65.1%	72.6%
Noxious Weed Management	9.3%	0.2%	0.3%	0.0%	21.6%
Yard Cleaning	2.6%	1.2%	1.3%	0.0%	4.2%
Wildfire Partners	2.0%	1.1%	0.3%	31.7%	0.1%
Forest Health	1.7%	3.7%	0.1%	0.0%	0.0%
Other	1.5%	1.2%	0.0%	0.2%	1.1%
Wind Throw/Wind Damage	0.9%	1.2%	1.6%	0.0%	0.0%
Hazard Tree	0.9%	0.9%	0.6%	1.4%	0.1%
Bark Beetles	0.6%	0.9%	1.0%	0.0%	0.0%
Cold Springs Fire Clean-Up	0.5%	0.8%	0.0%	1.3%	0.0%
Construction	0.5%	0.9%	0.0%	0.4%	0.3%

Volume Totals:

This year's load count was down 1,268 loads, which caused a decrease in tonnage. Tonnage is down by 263 tons. Slash was down 139.5 tons, and wood tons were down by 106.8 (Table 11). A total of 42 semi-truck loads of ground woody biomass was hauled off site to several compost facilities, a decrease of 10 semi-truck loads from 2020.

Table 11: Removal volumes for the Nederland CFSY.

Yard	Slash Tons	Wood Tons	Chip Tons	Noxious Weed 40 Cubic Yard Roll-offs Tons
Nederland	534.0	53.8	104.3	82.8

Total material processed for the 2021 Season: 774.9 Tons

Meeker Park CFSY

Trends:

The yard opened on May 12, and the load count on this sunny day was five loads. The closing date was on Oct. 16. There was a total of 92 days of operation, with an average load count of 44.7 loads per day, which totals 4,110 loads for this operational period, an increase of 144 loads from 2020 (Figure 9, 10, & 11).

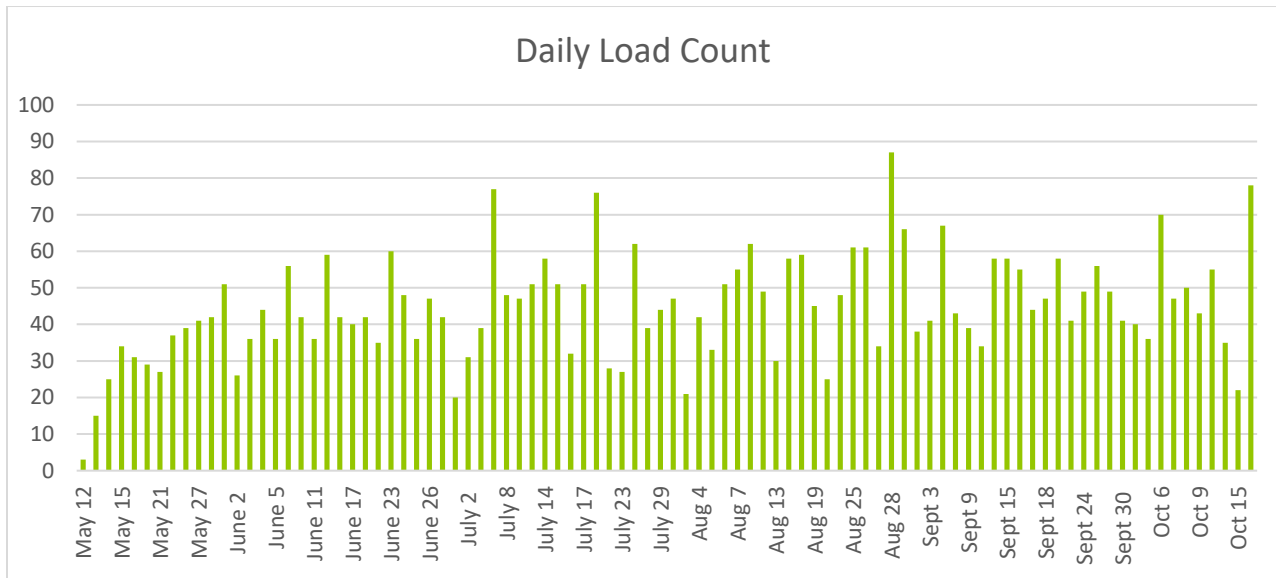


Figure 9: Daily load counts for the Meeker CFSY.



Figure 10 : Left, Meeker Park CFSY resident elk, Right, Meeker Park CFSY typical day.



Figure 11: Pile of wood chips at the Meeker Park CFSY.

Origin of Material:

Larimer County residents accounted for 61.3% of the properties and 54.8% of the load count. These numbers surpassed the Boulder County resident's usage of 38% and load count of 45.1%. Larimer County residents account for 54.5% of the total tons of woody biomass and 66.3% of the yard debris volume (Table 12). Larimer County residents account for 286 new users out of the total 344 new users in 2021.

Table 12: County origin of the Meeker Park CFSY.

County	Users by County	Percentage (Users) by County	Percentage Load Count	Total Tons by County	Percentage (Tons) by County	Percentage of Yard Debris Volume
Boulder	379	38.2%	45.1%	504.7	45.4%	33.4%
Larimer	607	61.3%	54.8%	605.5	54.5%	66.3%
N/A	5	0.5%	0.1%	1.8	0.1%	0.2%

Private landowners were the primary patrons of the Meeker Park Sort Yard (Table 13) and, consequently, generated most of the slash volume. Contractors brought in the most chip tons.

Table 13: Biomass percentages based on user type for the Meeker Park CFSY.

User Type	Load Count	Slash Tons	Wood Tons	Chip Tons	Yard Debris Volume	Woody Biomass Total Tons
Private	91.6%	80.1%	79.1%	12.9%	94.7%	75.8%
Contractor	8.2%	19.9%	20.9%	73.9%	5.3%	23.4%
Wildfire Partners	0.2%	0.0%	0.0%	13.2%	0.0%	0.8%

Reason for Removal:

Fire mitigation (91%) was the primary reason for removal, resulting in the highest amount of slash (96.2%), wood volume (99.4%), and wood chips (99.9%) (Table 14). Noxious weed management was the second highest reason for yard debris volume, at 10.8% of the load counts and slash tons (3.9%).

Table 14: Reason for removal of biomass by Meeker Park CFSY users.

Primary Reason for Removal	Load Count	Slash Tons	Wood Tons	Wood Chip Tons	Yard Debris Volume
Fire Mitigation	91.5%	96.2%	99.4%	99.9%	88.0%
Noxious Weed Management	5.5%	0.0%	0.0%	0.0%	10.8%
Other	0.9%	1.5%	0.0%	0.0%	0.0%
Wind Throw/Wind Damage	0.8%	1.1%	0.0%	0.0%	0.1%
Yard Cleaning	0.4%	0.1%	0.0%	0.0%	0.9%
Bark Beetles	0.2%	0.3%	0.2%	0.0%	0.1%
Forest Health	0.2%	0.4%	0.3%	0.0%	0.0%
Hazard Tree	0.2%	0.2%	0.0%	0.1%	0.0%
Construction	0.1%	0.2%	0.1%	0.0%	0.0%
Wildfire Partners	0.1%	0.1%	0.0%	0.0%	0.0%

Volume Totals:

Slash volume was up 240.5 tons, wood volume was up 119.1 tons, and chip volume was up 216.9 tons from the previous year. Overall volume increased 611 tons from 2020, which includes tonnage from roll-offs. There was a total of 48 semi-truck loads of ground mulch hauled to a compost facility, which was an increase of 20 semi-truck loads in 2021.

Table 15: Volume of biomass collected at the Meeker Park CFSY.

Yard	Slash Tons	Wood Tons	Chip Tons	Noxious Weed 40 Cubic Yard Roll-offs Tons
Meeker Park	636.9	225.9	249.2	73.4

Total material processed for the 2021 Season: 1185.4

Appendix A

Appendix A demonstrates operational costs for grinding at both yards in 2021. This past year, slash was ground and loaded directly into live floor vans, removing the need to have a loader on site. An average load weighs 22 tons.

Mulch Transportation Cost and Tip Fees					
Yard	Number of Truck Loads	Hauling Cost	Tip Fees	Other Cost	Invoice Total
Meeker Park	48	\$34,900.02	\$370.80	\$2,630.79	\$37,901.61
Nederland	42	\$31,471.15	\$1,049.20	\$2,256.02	\$34,776.37
Totals	90	\$66,371.17	\$1,420.00	\$4,886.81	\$72,677.98

Biomass Transportation Cost					
Yard	Number of Truck Loads	Hauling Cost	Tip Fees	Other Cost	Invoice Total
Meeker Park	1	\$1,000.00	N/A	\$44.88	\$1,044.88
Nederland	11	\$ 7,625.00	N/A	\$ 420.27	\$8,045.27
Totals	12	\$8,625.00	N/A	\$465.15	\$9,090.15

Note: These figures do not count fuel and salaries to transport/mobilize the Boulder County grinder and excavator, equipment operational costs, or repair costs.

Community Forestry Sort Yard Budget \$90,000

Yard	Total Spent	Percent of Budget Spent	Cost per Load Count	Cost per Ton	Total Cost for Roll-offs	Roll-offs Cost per Tons
Meeker Park	\$56,628.77	51.6%	\$13.78	\$50.93	\$10,884.78	\$148.21
Nederland	\$53,138.64	48.4%	\$12.28	\$68.57	\$8,476.54	\$102.34
Grand Total	\$109,767.41	100.0%	\$13.01	\$56.00	\$19,360.54	\$123.90

Break Out of Budget Items		
Vendor	Service	Total Spent
JRP Transport LLC	Transportation & tip fees for yard debris	\$79,374.10
Western Disposal Services	Transportation of noxious weeds roll-offs	\$19,361.32
Fire Hose Direct	New fire hose for both yard	\$2,342.35
Air-O-Pure Total	Rental/ cleaning Pot-o-Potties	\$2,215.00
Metron Farnier	Replacement water meter for the Ned CFSY	\$1,700.00
Select Materials LLC	Tips fees	\$1,420.00
Power Motive Corp	Inserts for grinder	\$1,010.35
Indian Peaks Ace Hardware	Operating supplies	\$970.16
Murdoch's Longmont	Operating supplies	\$478.37
General Operating Supplies	Items for day to day operation	\$895.76
Community Forestry Sort Yard Total Spent		\$109,767.41

Yearly Load Count

Year	Operational Days	Load Count	Daily Average
2008	52	1309	25.1
2009	130	2991	23.0
2010	102	2747	26.9
2011	118	3521	29.8
2012	119	6585	55.3
2013	112	3424	30.6
2014	187	4722	25.3
2015	187	4688	25.1
2016	192	6509	33.9
2017	169	6945	41.1
2018	174	6878	39.5
2019	178	6156	34.7
2020	160	9563	59.8
2021	195	8439	43.3
Totals	2075	74477	35.9
Yearly Average	148.2	5319.8	35.9

Direction of Travel for Nederland CFSY 2021
Summary of traffic flow on Ridge Road leading to the sort yard

Week	Dates	West (Turned right into the yard)	East (Turned left into the yard)	Grand Total	Notes
Week 1	April 28- May 1	25	7	32	<i>Opening Week/ Closed April 28</i>
Week 2	May 5-8	76	12	88	
Week 3	May 12-15	60	10	70	
Week 4	May 19-22	129	12	141	
Week 5	May 26-29	118	12	130	
Week 6	June 2-5	156	26	182	
Week 7	June 9-12	170	32	202	
Week 8	June 16-19	144	41	185	
Week 9	June 23-26	139	48	187	
Week 10	June 30 -July 3	134	39	173	
Week 11	July 7-10	136	18	154	
Week 12	July 14-17	183	28	211	
Week 13	July 21-24	172	29	201	
Week 14	July 28-31	188	19	207	
Week 15	Aug 4-7	169	26	195	
Week 16	Aug 11-14	152	28	180	
Week 17	Aug 18-21	139	24	163	
Week 18	Aug 25-28	151	22	173	
Week 19	Sept 1-4	152	19	171	
Week 20	Sept 8-11	142	26	168	
Week 21	Sept 15-18	151	7	158	
Week 22	Sept 22-25	169	11	180	
Week 23	Sept 29 -Oct 2	105	15	120	
Week 24	Oct 6-9	142	16	158	
Week 25	Oct 13-16	144	15	159	
Week 26	Oct 20-23	278	63	341	<i>146 loads on Saturday Oct 23</i>
Grand Total		3,724	605	4,329	

➤ Note: Wednesday thru Saturday operating schedule, open 9 a.m. - 5 p.m.