

**Project Sponsor:** Town of Erie

**Project Title:** Flex Ride Starter Service

**Project Phases:** Bus Service

**STBG or AQ/MM:** AQ/MM

**Background/ Project Justification:**

With growth exploding in the Town of Erie while transit service remains stagnant and minimal, the Town of Erie is seeking funding to begin a flex ride transit service. The Town will continue growth and expand for the foreseeable future. The interest of transit options has grown for the Town as has been established in the last Comprehensive Plan and remains a focus in the upcoming Transportation Mobility Plan. As RTD continues to provide fixed-route service in their boundary in Erie, there lacks a first- and last-mile transit option for the residents of Erie. Erie lies on the northern edge of the RTD boundary with one route that services into the town at the Erie Community Center. While the route services an important destination for Erie, it is not sufficient to reach residents in other parts of the Town. This service would also set the stage for future connections to route developments.

There are several plans identifying future BRT plans for in and around Erie. The RTD Regional BRT Network Feasibility Study and RTD's System Optimization Plan call for a BRT route along the US 287 corridor and along State Highway 7. Boulder County Transportation Master Plan and the Northwest Area Mobility Study also identify a BRT on the US 287 corridor. As these BRT lines are established around Erie, service will be needed to fill the gap to reach these BRT lines for Erie residents. Providing a micro-transit to access these BRT routes will provide a means of transportation for residents who are not within walking distance to these routes or where existing transit services are nonexistent.

**Project Description:**

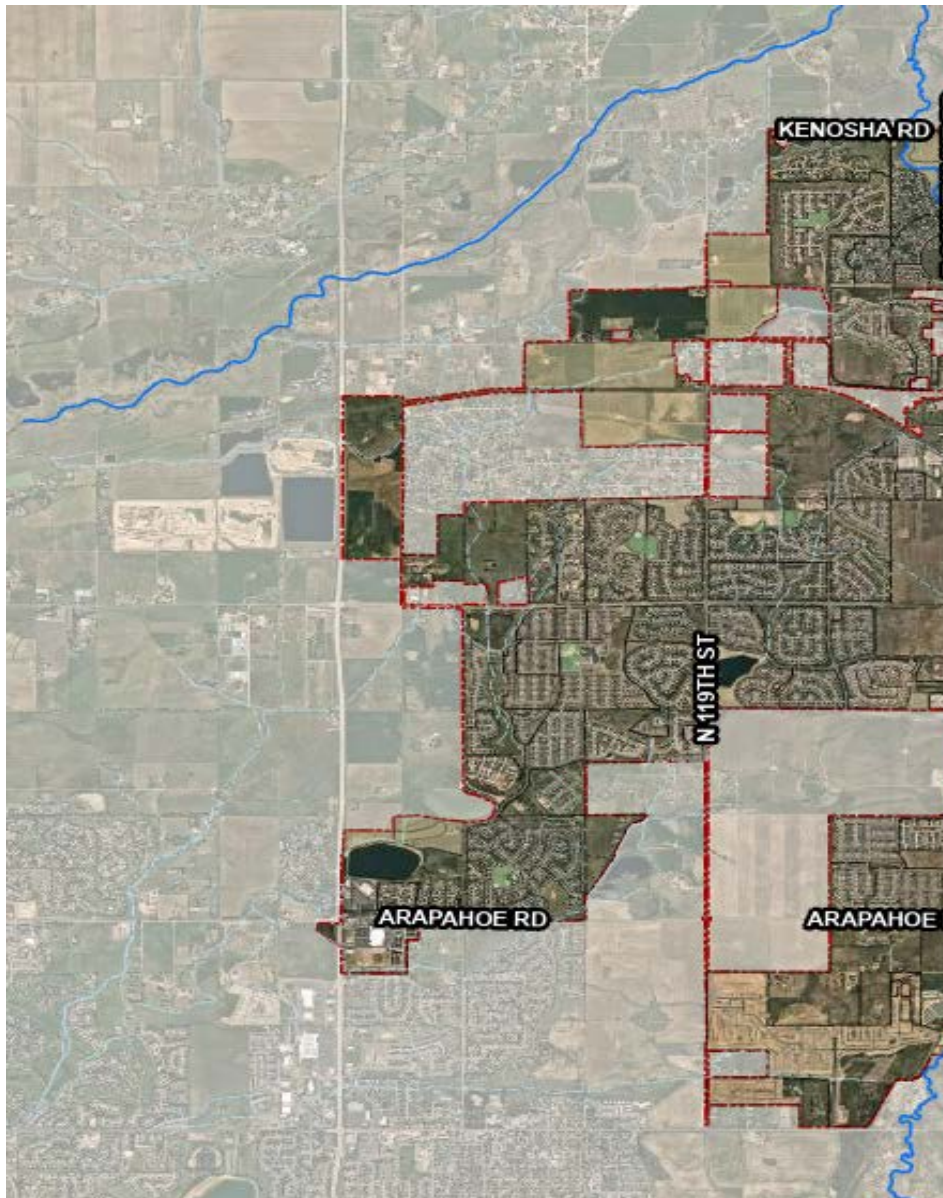
The development of the FlexRide service would include establishing a service boundary, service days and hours, and fund the operation of the bus. The service would provide an on-demand FlexRide service for the residents of Erie in Boulder County. The service would be open to the public in Erie and service to destinations within the boundary. This would achieve the goal of getting residents who have no means of transportation whether it be lack of car, unable to drive themselves, are of the low-income population and others who need to get to medical services, educational facilities, employment, recreational activities, or shopping for necessities.

This FlexRide service will be in place for when the plans of the several BRTs in the region are developed. This service will provide transportation to access those transit services around Erie. This service will fulfill the need for the first- and last-mile transit to reach other transit services and final destinations. The FlexRide service will also service as a metric to determine where transit is needed most in Erie and popular destinations. This metric can be used to further expand fixed-route service from RTD in and around Erie. This service will provide for both a transit need and guide future decisions on transit expansion.

Funding Breakdown (in \$1,000s) (by program year)					
	FY 2024*	FY 2025*	FY 2026	FY 2027	Total
DRCOG Requested Funds <sup>2</sup>	\$ █	\$150	\$150	\$150	\$450
CDOT or RTD Supplied Funds <sup>3</sup>	\$ █	\$ █	\$ █	\$ █	\$ 0
Local Funds (Funding from sources other than DRCOG, CDOT, or RTD)	\$ █	\$16	\$16	\$16	\$48
<b>Total Funding</b>	\$ 0	\$166	\$166	\$166	\$498

\*Note: If submitting in the AQ/MM Track, there is no FY 24 funding and very little FY 25 funding; almost all the funding is limited to FY 26 and FY 27

**Project Location/ Map:**



# Visuals/ Images:

TMP Working

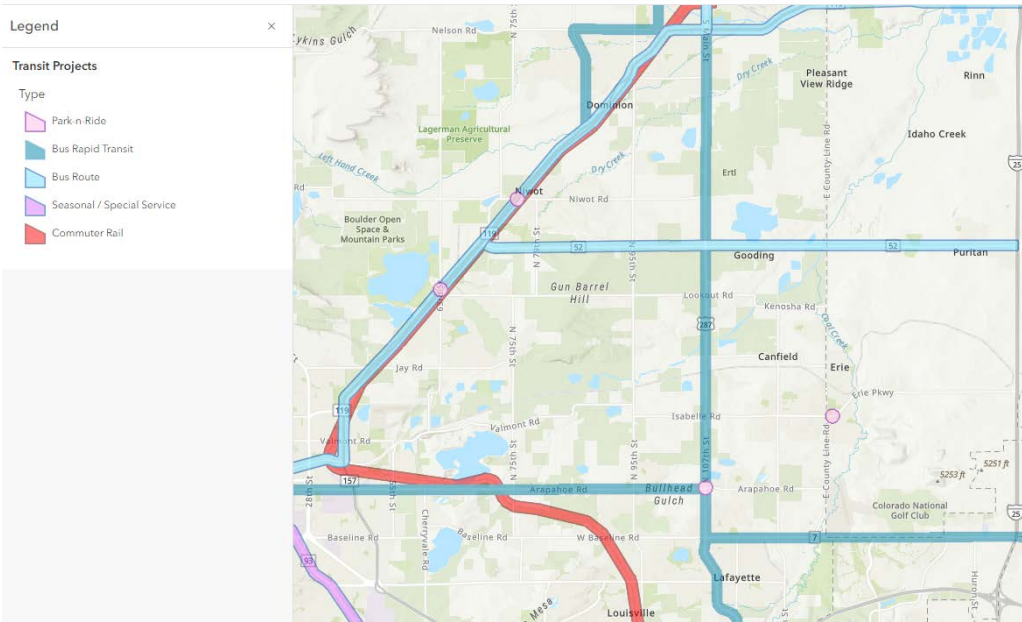


Figure 1: State Highway 7 BRT Corridor

