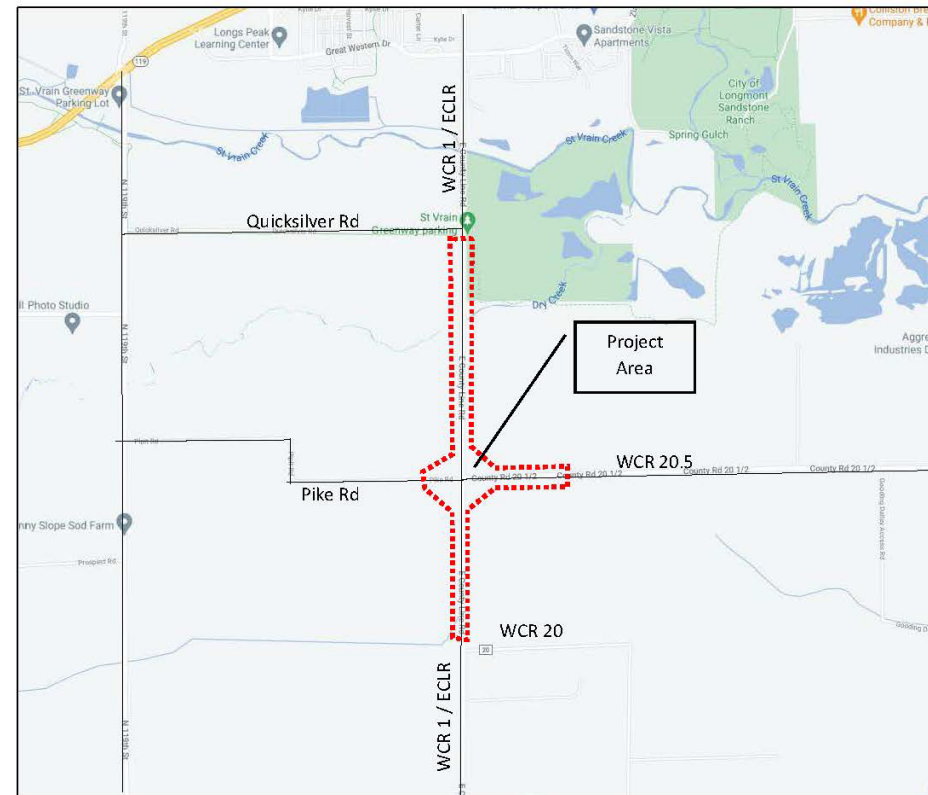


# EAST COUNTY LINE ROAD / WELD COUNTY ROAD 1

## QUICKSILVER ROAD TO PIKE ROAD / WCR 20.5

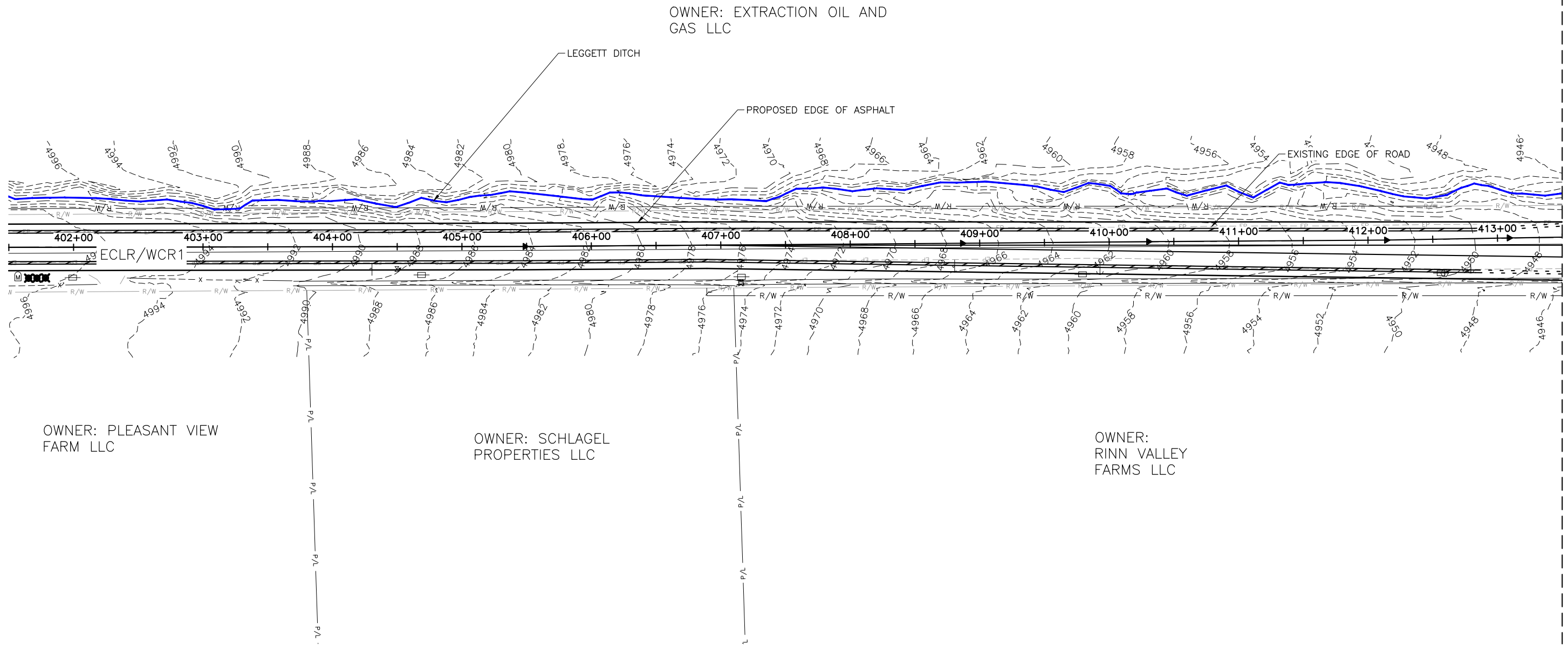
### CONCEPTUAL DESIGN



BOULDER COUNTY  
PUBLIC WORKS DEPARTMENT

JUNE 2021

Plot Date: 5/25/2021 11:40 AM Plotted By: Brian Katt  
 File Name: C:\Users\brkatt\Desktop\20.5 EXHIBIT\PROJECT\EXHIBITS\20.5 EXHIBIT.DWG




MATCHLINE STA. 413+50  
 SEE SHEET C-102

REUSE OF DRAWINGS			
J-U-B SHALL RETAIN ALL COMMON LAW, STATUTORY, COPYRIGHT AND OTHER RESERVED RIGHTS OF THESE DRAWINGS, AND THE SAME SHALL NOT BE REUSED WITHOUT J-U-B'S PRIOR WRITTEN CONSENT. ANY REUSE WITHOUT WRITTEN CONSENT BY J-U-B WILL BE AT CLIENT'S SOLE RISK AND WITHOUT LIABILITY OR LEGAL EXPOSURE TO J-U-B.			
NO.	DESCRIPTION	BY	DATE

--	--	--	--

**J-U-B ENGINEERS, INC.**  
 4745 Boardwalk Drive  
 Building D, Suite 200  
 Fort Collins, CO 80525  
 Phone: 970.377.3602  
 www.jub.com



**PRELIMINARY PLANS**  
  
**NOT FOR CONSTRUCTION**

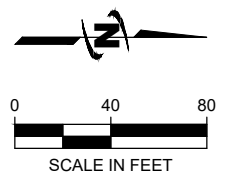
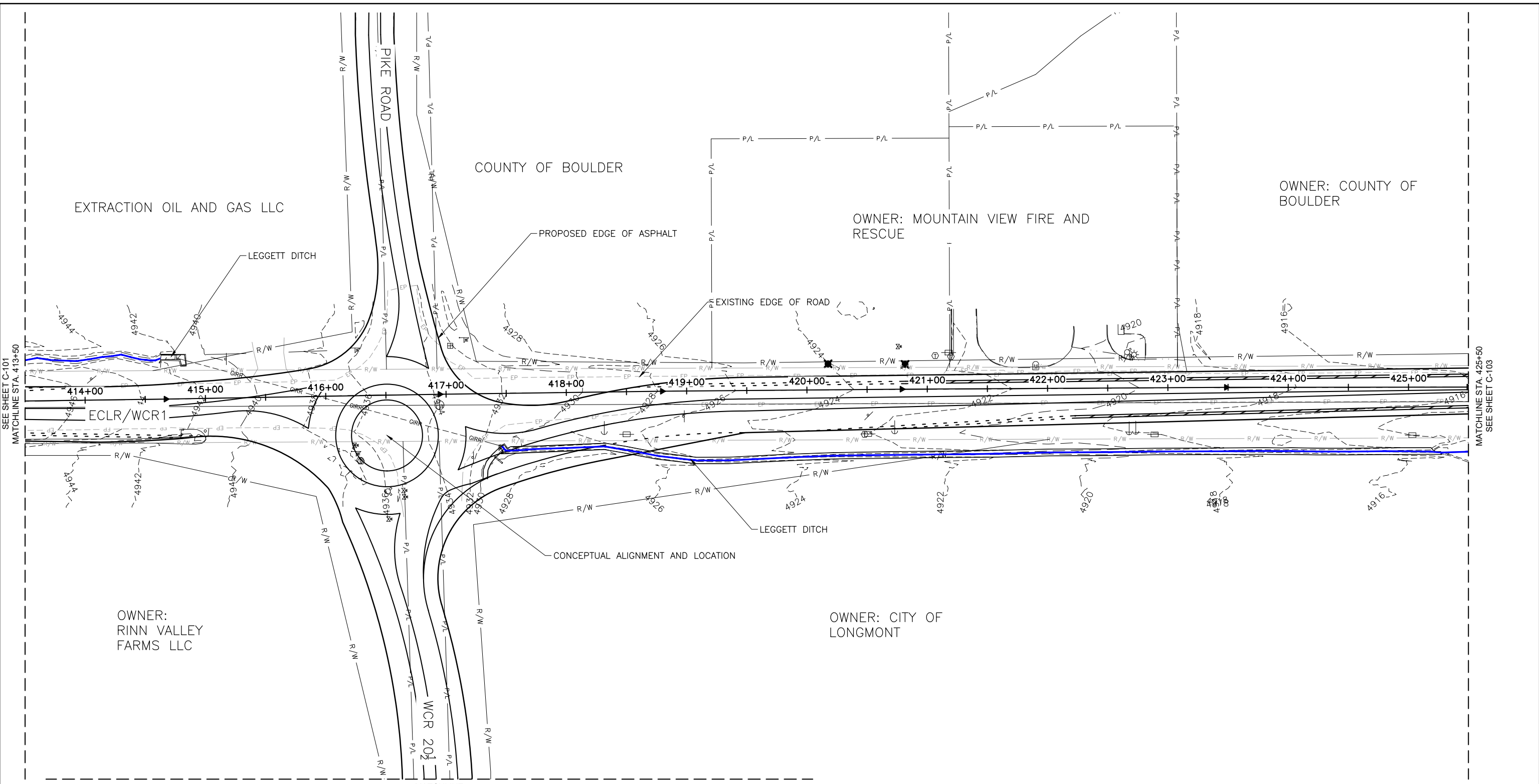
FILE: 20.5 EXHIBIT  
 JUB PROJ. #: \*\*\*\*\*  
 DRAWN BY: ###  
 DESIGN BY: ###  
 CHECKED BY: ###

ONE INCH  
 AT FULL SIZE, IF NOT ONE  
 INCH, SCALE ACCORDINGLY

**EAST COUNTY LINE ROAD/WCR 1**  
**BOULDER COUNTY**  
  
 WCR 20.5/PIKE ROAD INTERSECTION

LAST UPDATED: 5/25/2021  
 SHEET NUMBER:  
**C-101**

Plot Date: 5/25/2021 11:40 AM Plotted By: Brian Matt  
 C:\Users\brlatt\Desktop\20\EXHIBIT\PROJECT\EXHIBIT20.5\EXHIBIT.DWG



REUSE OF DRAWINGS			
J-U-B SHALL RETAIN ALL COMMON LAW, STATUTORY, COPYRIGHT AND OTHER RESERVED RIGHTS OF THESE DRAWINGS, AND THE SAME SHALL NOT BE REUSED WITHOUT J-U-B'S PRIOR WRITTEN CONSENT. ANY REUSE WITHOUT WRITTEN CONSENT BY J-U-B WILL BE AT CLIENT'S SOLE RISK AND WITHOUT LIABILITY OR LEGAL EXPOSURE TO J-U-B.			
REVISION			
NO.	DESCRIPTION	BY	DATE

MATCHLINE  
 SEE SHEET C-106

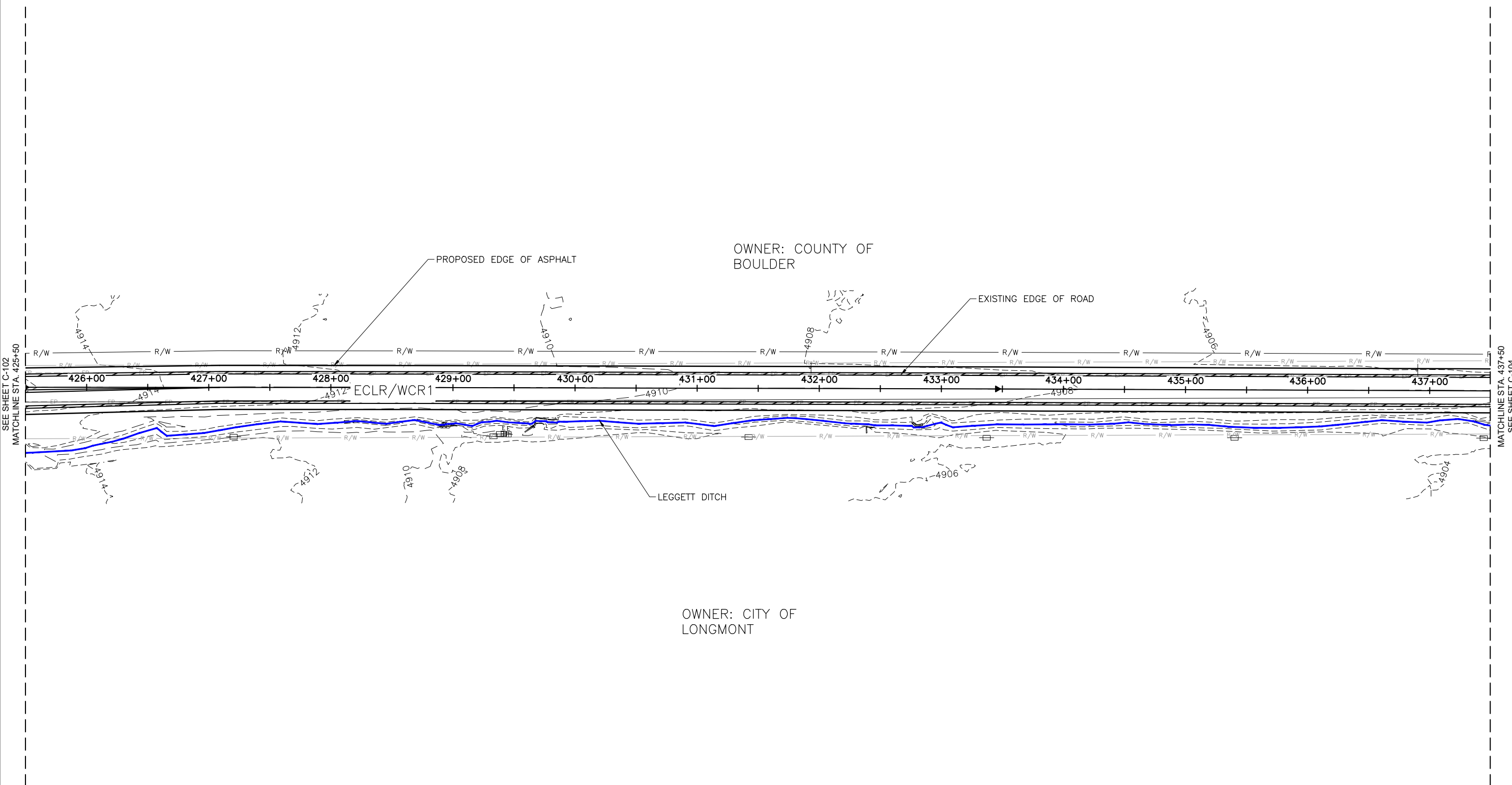
**J-U-B ENGINEERS, INC.**  
 4745 Boardwalk Drive  
 Building D, Suite 200  
 Fort Collins, CO 80525  
 Phone: 970.377.3602  
 www.jub.com



**PRELIMINARY PLANS**  
  
**NOT FOR CONSTRUCTION**

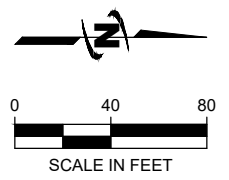
FILE: 20.EXHIBIT JUB PROJ. #: ***** DRAWN BY: ### DESIGN BY: ### CHECKED BY: ###	<b>EAST COUNTY LINE ROAD/WCR 1 BOULDER COUNTY</b>  WCR 20.5/PIKE ROAD INTERSECTION	LAST UPDATED: 5/25/2021 SHEET NUMBER: <b>C-102</b>
--	--	--

Plot Date: 5/25/2021 11:44 AM Plotted By: Brian Katt  
 File Name: C:\Users\brkatt\Desktop\20.5 EXHIBIT\PROJECT EXHIBITS\20.5 EXHIBIT.DWG



SEE SHEET C-102  
MATCHLINE STA. 425+50

MATCHLINE STA. 437+50  
SEE SHEET C-104



REVISION			
NO.	DESCRIPTION	BY	DATE

REUSE OF DRAWINGS

J-U-B SHALL RETAIN ALL COMMON LAW, STATUTORY, COPYRIGHT AND OTHER RESERVED RIGHTS OF THESE DRAWINGS, AND THE SAME SHALL NOT BE REUSED WITHOUT J-U-B'S PRIOR WRITTEN CONSENT. ANY REUSE WITHOUT WRITTEN CONSENT BY J-U-B WILL BE AT CLIENT'S SOLE RISK AND WITHOUT LIABILITY OR LEGAL EXPOSURE TO J-U-B.

J-U-B ENGINEERS, INC.  
 4745 Boardwalk Drive  
 Building D, Suite 200  
 Fort Collins, CO 80525

Phone: 970.377.3602  
 www.jub.com

**JUB**  
J-U-B ENGINEERS, INC.

PRELIMINARY  
PLANS

NOT FOR  
CONSTRUCTION

FILE: 20.5 EXHIBIT  
 JUB PROJ. #: \*\*\*\*\*  
 DRAWN BY: ###  
 DESIGN BY: ###  
 CHECKED BY: ###

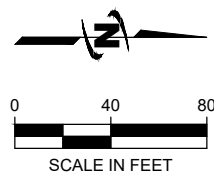
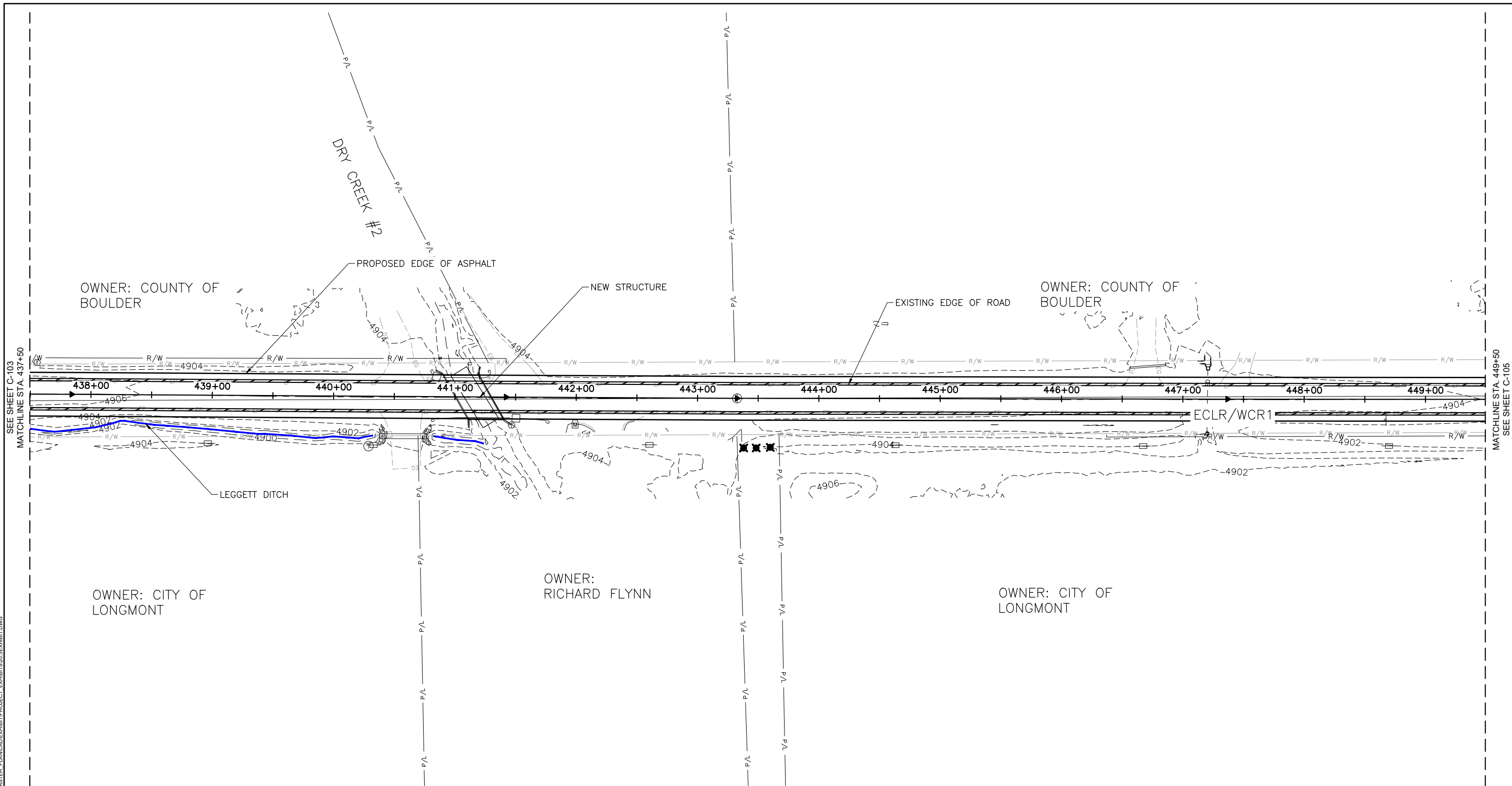
ONE INCH  
AT FULL SIZE, IF NOT ONE  
INCH, SCALE ACCORDINGLY

**EAST COUNTY LINE ROAD/WCR 1  
BOULDER COUNTY**

WCR 20.5/PIKE ROAD INTERSECTION

LAST UPDATED: 5/25/2021  
 SHEET NUMBER:  
**C-103**

Plot Date: 5/25/2021 11:44 AM Plotted By: Brian Kall  
C:\Users\brkall\OneDrive\Desktop\205\205 EXHIBIT\PROJECT EXHIBITS\205 EXHIBIT.DWG



REVISION			
NO.	DESCRIPTION	BY	DATE

**REUSE OF DRAWINGS**  
J-U-B SHALL RETAIN ALL COMMON LAW, STATUTORY, COPYRIGHT AND OTHER RESERVED RIGHTS OF THESE DRAWINGS, AND THE SAME SHALL NOT BE REUSED WITHOUT J-U-B'S PRIOR WRITTEN CONSENT. ANY REUSE WITHOUT WRITTEN CONSENT BY J-U-B WILL BE AT CLIENT'S SOLE RISK AND WITHOUT LIABILITY OR LEGAL EXPOSURE TO J-U-B.

**J-U-B ENGINEERS, INC.**  
4745 Boardwalk Drive  
Building D, Suite 200  
Fort Collins, CO 80525  
Phone: 970.377.3602  
www.jub.com

**PRELIMINARY PLANS**  
  
**NOT FOR CONSTRUCTION**

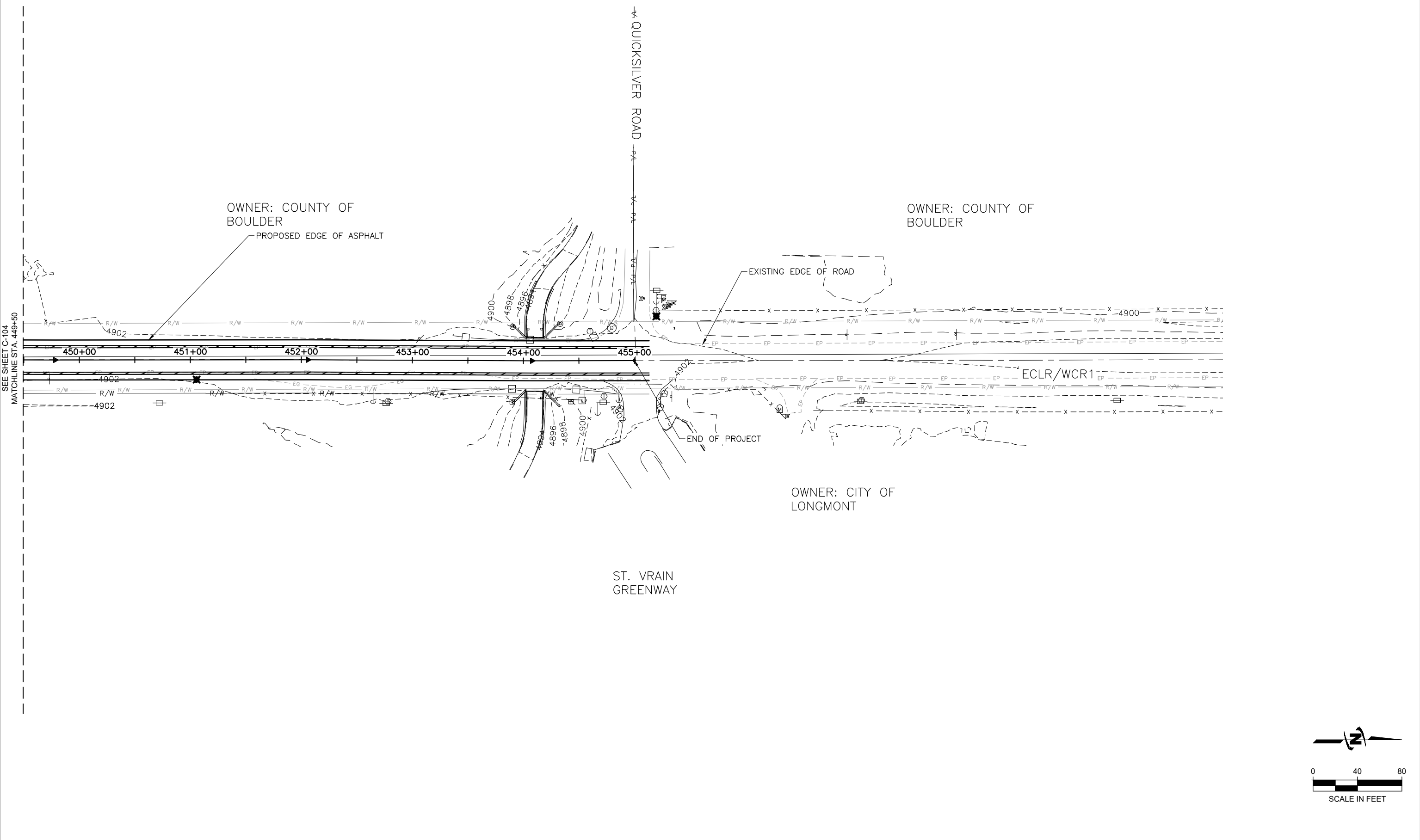
FILE: 205 EXHIBIT  
JUB PROJ. #: \*\*\*\*\*  
DRAWN BY: ###  
DESIGN BY: ###  
CHECKED BY: ###

**EAST COUNTY LINE ROAD/WCR 1  
BOULDER COUNTY**

WCR 20.5/PIKE ROAD INTERSECTION

LAST UPDATED: 5/25/2021  
SHEET NUMBER:  
**C-104**

Plot Date: 5/25/2021 11:44 AM Plotted By: Brian Kall  
 Drawn On: 5/25/2021 C:\USERS\BRK\DESKTOP\20.5 EXHIBIT\PROJECT EXHIBITS\20.5 EXHIBIT.DWG



REVISION			
NO.	DESCRIPTION	BY	DATE

J-U-B SHALL RETAIN ALL COMMON LAW, STATUTORY, COPYRIGHT AND OTHER RESERVED RIGHTS OF THESE DRAWINGS, AND THE SAME SHALL NOT BE REUSED WITHOUT J-U-B'S PRIOR WRITTEN CONSENT. ANY REUSE WITHOUT WRITTEN CONSENT BY J-U-B WILL BE AT CLIENT'S SOLE RISK AND WITHOUT LIABILITY OR LEGAL EXPOSURE TO J-U-B.

**J-U-B ENGINEERS, INC.**  
 4745 Boardwalk Drive  
 Building D, Suite 200  
 Fort Collins, CO 80525  
 Phone: 970.377.3602  
 www.jub.com



**PRELIMINARY PLANS**  
  
**NOT FOR CONSTRUCTION**

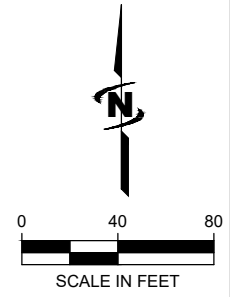
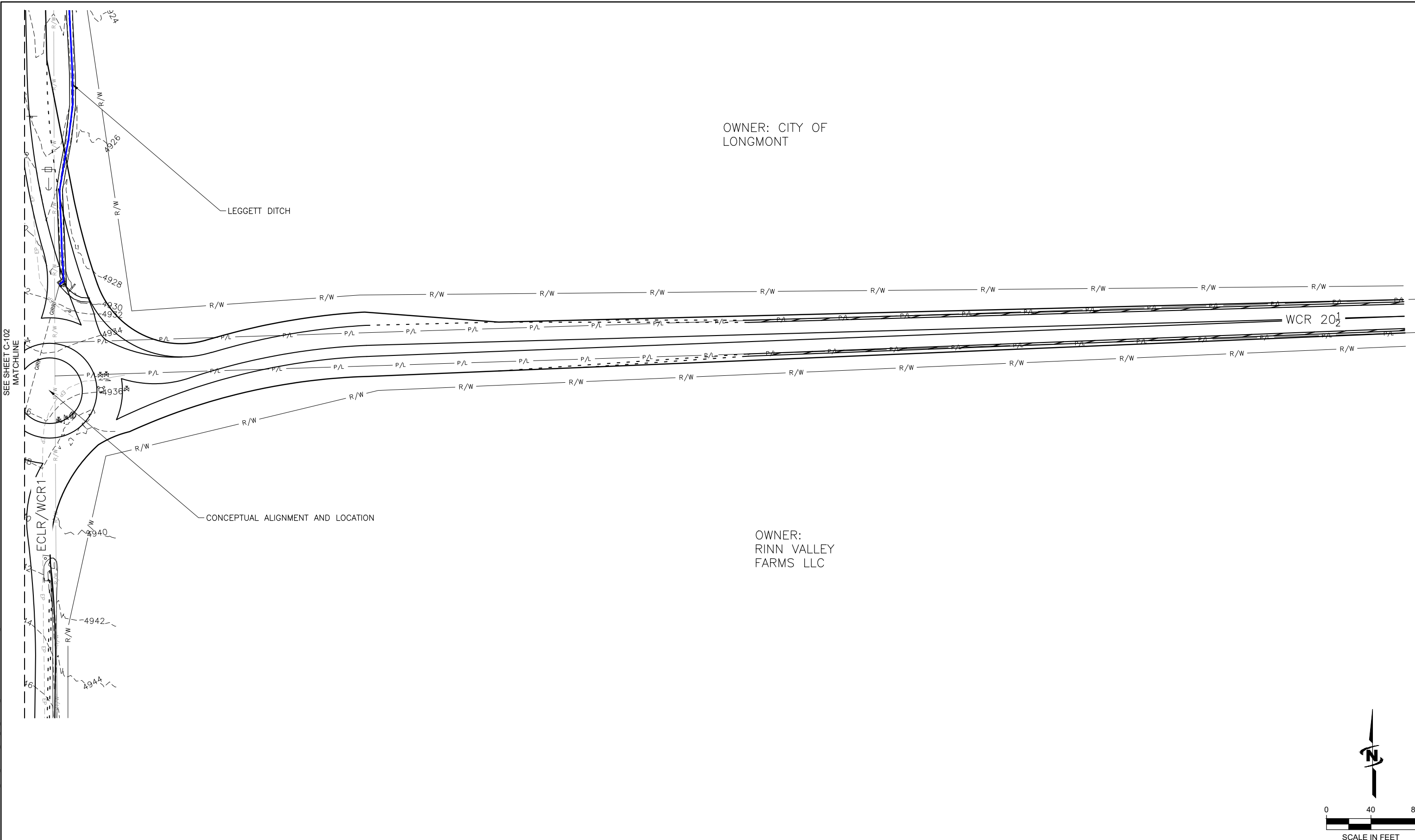
FILE: 20.5EXHIBIT  
 JUB PROJ. #: \*\*\*\*\*  
 DRAWN BY: ###  
 DESIGN BY: ###  
 CHECKED BY: ###

**EAST COUNTY LINE ROAD/WCR 1**  
**BOULDER COUNTY**

WCR 20.5/PIKE ROAD INTERSECTION

LAST UPDATED: 5/25/2021  
 SHEET NUMBER:  
**C-105**

Plot Date: 5/25/2021 11:44 AM Plotted By: Brian Kault  
 C:\Users\BKAULT\DESKTOP\2018012 EAST COUNTY LINE RD\_MASTER PLAN\CA\EXHIBIT\PROJECT\_EXHIBITS\20.5EXHIBIT.DWG



REUSE OF DRAWINGS			
J-U-B SHALL RETAIN ALL COMMON LAW, STATUTORY, COPYRIGHT AND OTHER RESERVED RIGHTS OF THESE DRAWINGS, AND THE SAME SHALL NOT BE REUSED WITHOUT J-U-B'S PRIOR WRITTEN CONSENT. ANY REUSE WITHOUT WRITTEN CONSENT BY J-U-B WILL BE AT CLIENT'S SOLE RISK AND WITHOUT LIABILITY OR LEGAL EXPOSURE TO J-U-B.			
NO.	DESCRIPTION	BY	DATE


J-U-B ENGINEERS, INC.  
 4745 Boardwalk Drive  
 Building D, Suite 200  
 Fort Collins, CO 80525  
 Phone: 970.377.3602  
 www.jub.com



J-U-B ENGINEERS, INC.

PRELIMINARY PLANS  
 NOT FOR CONSTRUCTION

FILE: 20.5EXHIBIT  
 JUB PROJ. #: \*\*\*\*\*  
 DRAWN BY: ###  
 DESIGN BY: ###  
 CHECKED BY: ###

ONE INCH AT FULL SIZE, IF NOT ONE INCH, SCALE ACCORDINGLY

EAST COUNTY LINE ROAD/WCR 1  
 BOULDER COUNTY

WCR 20.5/PIKE ROAD INTERSECTION

LAST UPDATED: 5/25/2021  
 SHEET NUMBER:  
**C-106**