



Sustainability, Climate Action & Resilience

Climate Policy Action Leadership Collaborative

Meeting 2

4.18.23

Agenda

- **Welcome (10 min)**
 - Sign in
 - Land Acknowledgment
- **Dinner (40 min)**
 - **Rincon Argentino**
 - Chat with partner about policy priorities (20 min)
 - Collin's policy menu (20 min)
- **Policy Landscape (30 min)**
- **Next Steps**



Land Acknowledgment

- We honor and recognize that we are in the ancestral homeland of the Cheyenne and Arapaho nations. This area also has a long history of exchange, hunting, gathering, healing, and spirituality for many other nations, such as the Lakota, Ute, Comanche, Shoshone, and Apache. As we pronounce and make this recognition and these words are heard, the connection of these nations with their traditional and ancestral territories is renewed and reaffirmed.
- We recognize the indigenous nations as the first stewards of the land, water, plants, and animals that identify this area as their home and make a recognition that these nations and their traditional and ancestral territories are renewed and reaffirmed while recognizing the cruel and painful history of genocide and forced displacement that these nations lived in their territories.
- We respect the diversity of people who still feel and live this connection to this land in which we are present today, and we honor and thank these nations and the ancestors of this territory as we gather. We know that this land acknowledgement is just a first step and that only action, like what we hope this space will support, can help address the injustices of colonization.



Policy Menu

We will cover them all!



In order of Greenhouse Gases (GHGs):

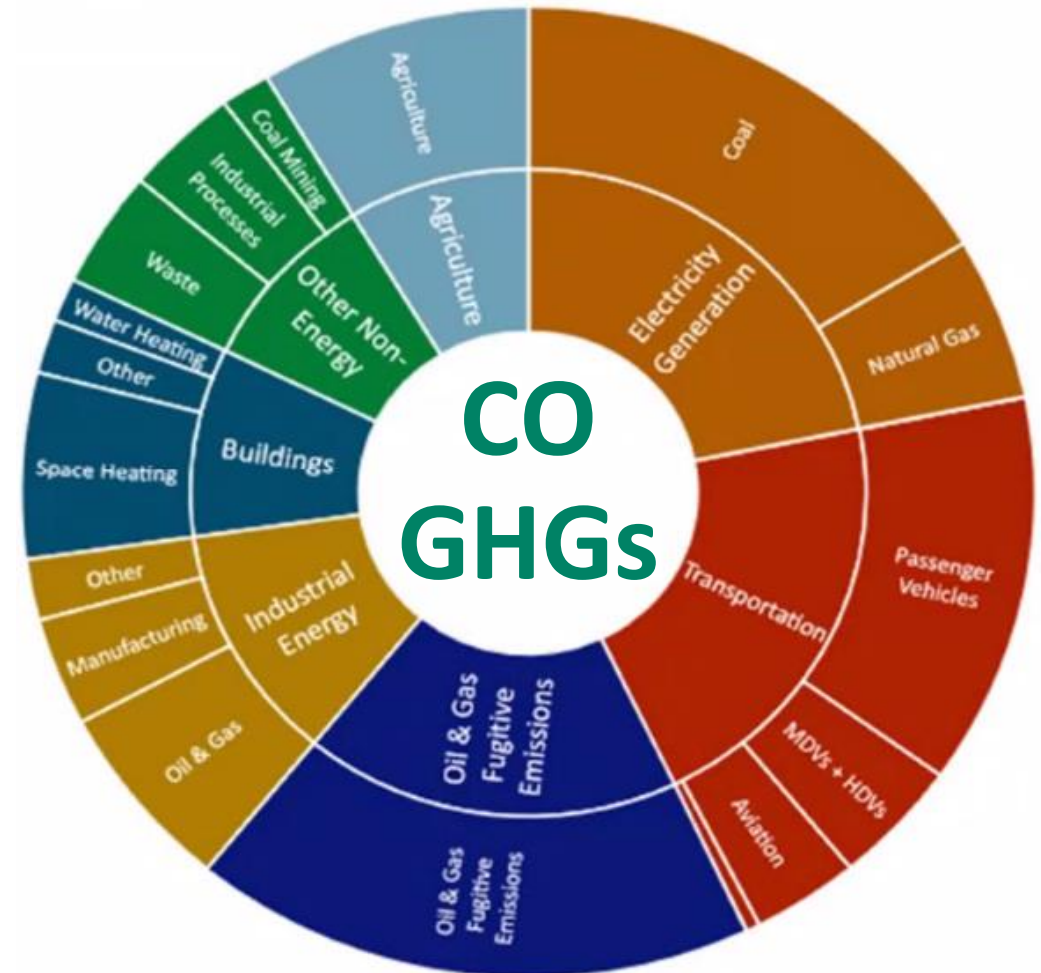
★ **Transportation**
• **Electricity Generation**

★ **Buildings**
• **Commercial**
• **Electricity**
• **Gas**
• **Residential**
• **Electricity**
• **Gas**

★★ **Oil and Gas**
★★ **Industrial**
• **Agriculture**
• **Waste / Wastewater**

★ **Air Quality**

2020 CO GHG Emissions (MMT CO₂e, AR5 100-yr GWP)



★ = highest overall priority



LAWS

LEGISLATION



FUNDING + AUTHORITY



Air Quality Control Commission (AQCC)

RULES

REGULATION



Public + stakeholder

US

State

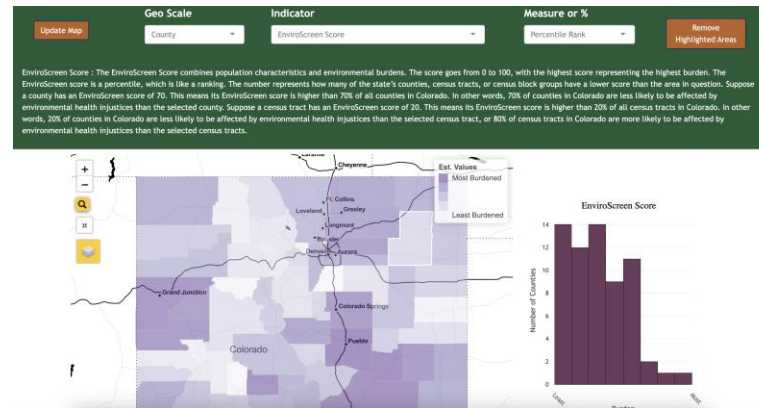
agencies/boards/commissions



EPA

Environmental Protection Agency

Disproportionately Impacted Communities and Colorado EnviroScreen



[Colorado EnviroScreen \(English\)](#)
[Colorado EnviroScreen \(Spanish\)](#)

- Developed as a tool to identify disproportionately impacted communities
- Use this tool to strengthen your testimonies and apply for grants

(II) “Disproportionately impacted community” means a community that is in a census block group, as determined in accordance with the most recent United States census, where the proportion of households that are **low income** is greater than forty percent, the proportion of households that identify as **minority** is greater than forty percent, or the proportion of households that are **housing cost-burdened** is greater than forty percent; or is any other community as identified or approved by a state agency, if: The community has a **history of environmental racism** perpetuated through redlining, anti-Indigenous, anti-immigrant, anti-Hispanic, or anti-Black laws; or the community is one where multiple factors, including socioeconomic stressors, disproportionate environmental burdens, vulnerability to environmental degradation, and lack of public participation, may act cumulatively to affect health and the environment and contribute to persistent disparities. As used in this subsection (2)(b)(II), “cost-burdened” means a household that spends more than thirty percent of its income on housing, and “low income” means the median household income is less than or equal to two hundred percent of the federal poverty guideline.

Colo. Rev. Stat. § 24-4-109 (2)(b)(II)

**May be revised in this 2023 legislative session:
check <https://leg.colorado.gov/bills/>**

Why Your Voice is Needed

- **Policy is Public**
- Most of the public isn't present
- Some groups have been consistently excluded – CO is working for change
- There are barriers to:
 - Participation
 - Understanding
 - Engagement
- You are the gateway to your whole community



Air and Climate

- Sources of air pollution are also sources of greenhouse gases
- Some air pollutants are also greenhouse gases
 - Methane
 - Ozone
 - Nitrous Oxide
- Climate change worsens air pollution
 - Heat → Ozone
 - Wildfires → Particulate matter



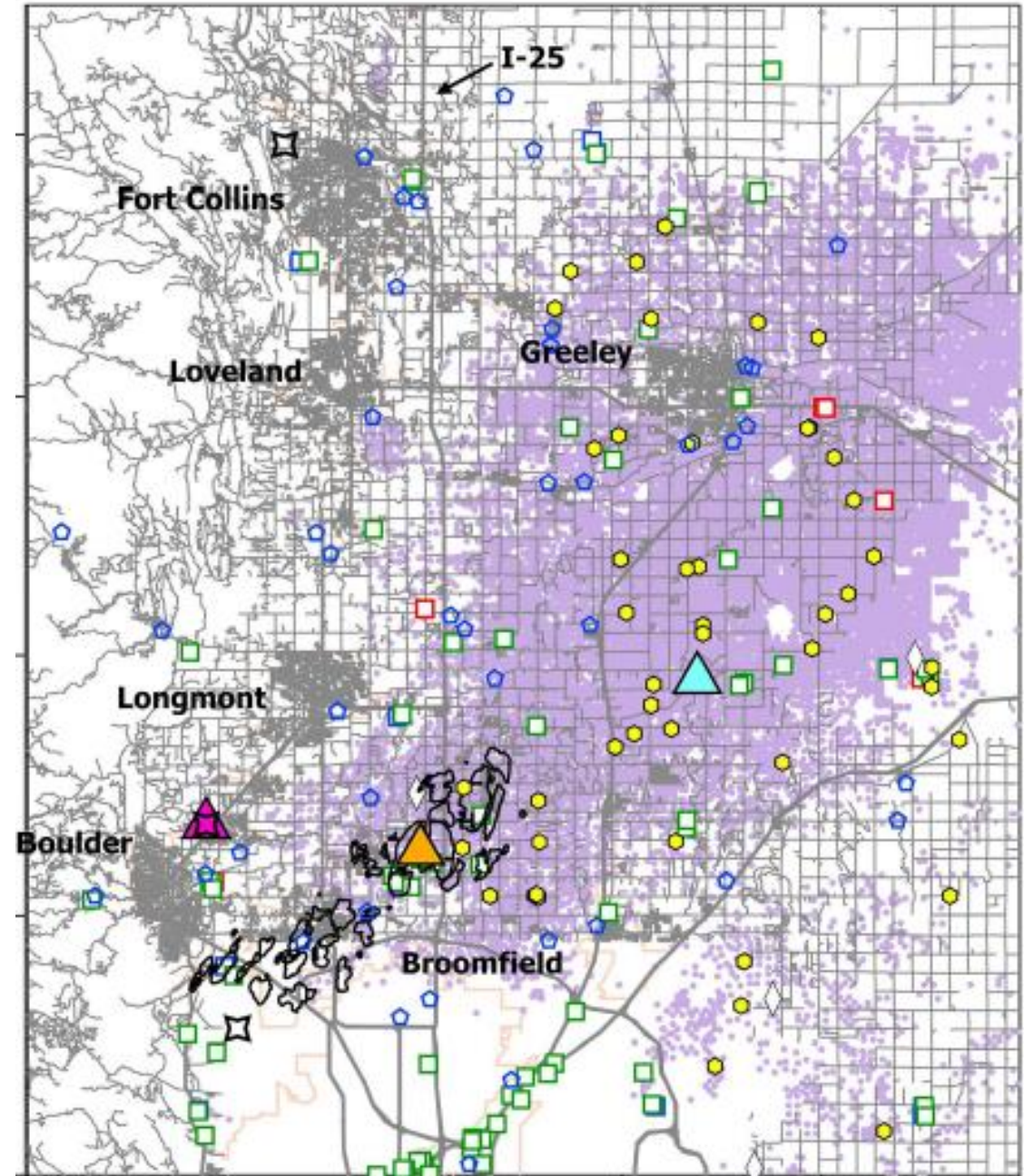
★ Industrial Emissions

- [Disproportionately Impacted Community \(DIC\) Permitting - AQCC Reg 3 \(May 16-19\)](#)
 - New monitoring / modeling for pollution sources
- [Manufacturing Greenhouse Gases - AQCC Regulation 27 “GEMM 2” \(May-Sept\)](#)
 - Greenhouse gas and “copollutant” reductions for DI Communities
- *Phase 1 GEMM rule (including CEMEX cement plant) will be covered at [AQCC](#) on Thu April 20 after 10am*



★ Oil and Gas Operations

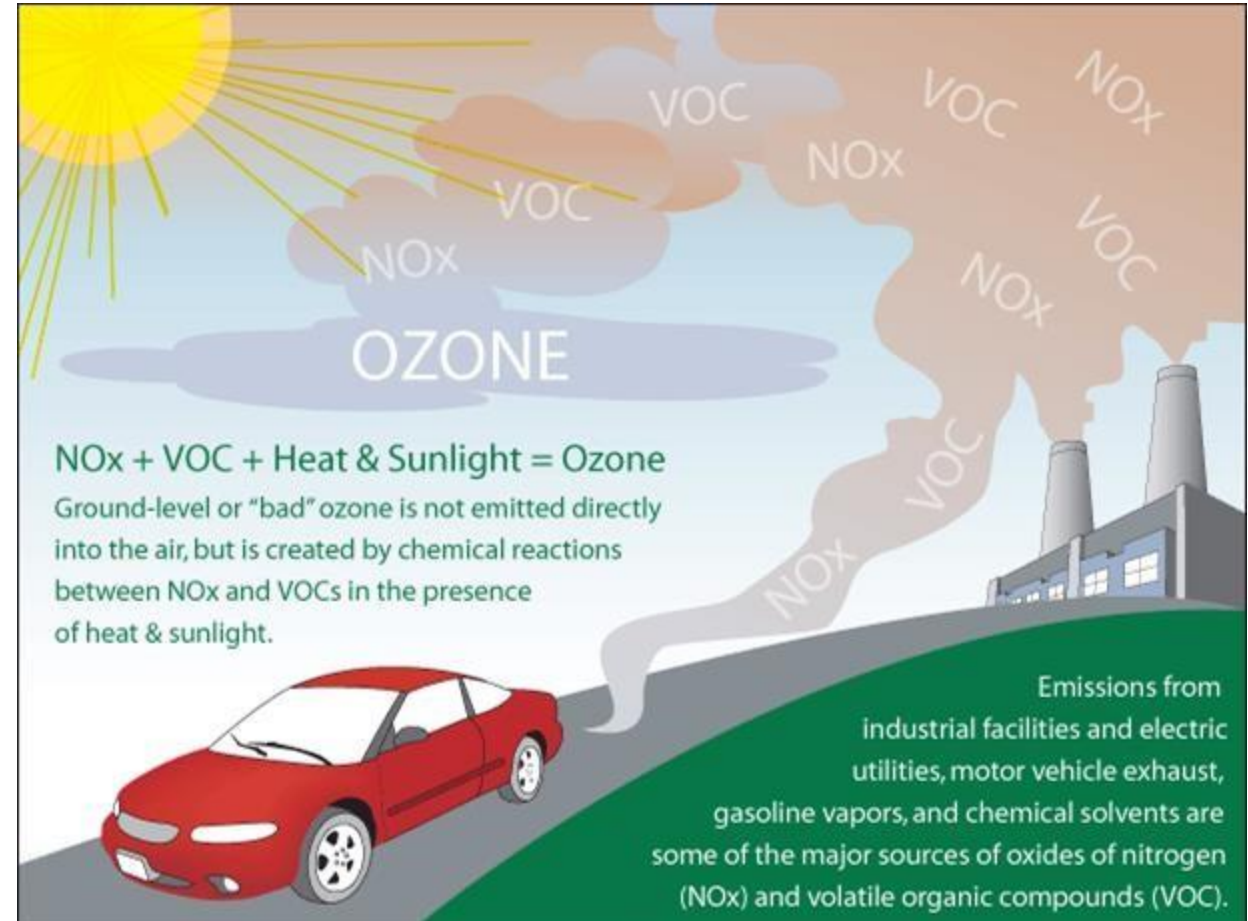
- Oil and gas directly impacts air quality in Boulder County
- [Oil and Gas GHG Intensity Verification - AQCC Regulation 7](#) (July 20-21)
 - Existing operations
 - Accounting for emissions in DI Communities
- [Colorado Oil and Gas Conservation Commission \(COGCC\) Cumulative Impact Analysis](#) rulemaking
 - New drilling permits



Pollack, I. B., Helmig, D., O'Dell, K., & Fischer, E. V. (2021)

★ (Ground Level) Ozone


- “Good up high, bad nearby”
- Like a sunburn for your lungs
- [Ozone State Implementation Plan \(SIP\) rulemaking](#) (likely September)
- Pollution controls to reduce our **“severe” nonattainment of federal health standards** for ozone.
- An ozone briefing from the Regional Air Quality Council and the Air Pollution Control Division will be at [AQCC](#) on **Thu April 20** after 10am



www.epa.gov

 **CPR News**

The EPA moves to declare the Front Range a ‘severe’ air quality violator. Here’s why that matters.

 By Sam Brasch · Apr. 12, 2022, 11:56 am

Transportation

- CO's largest greenhouse gas sector



Joining other states in adopting CA rules:

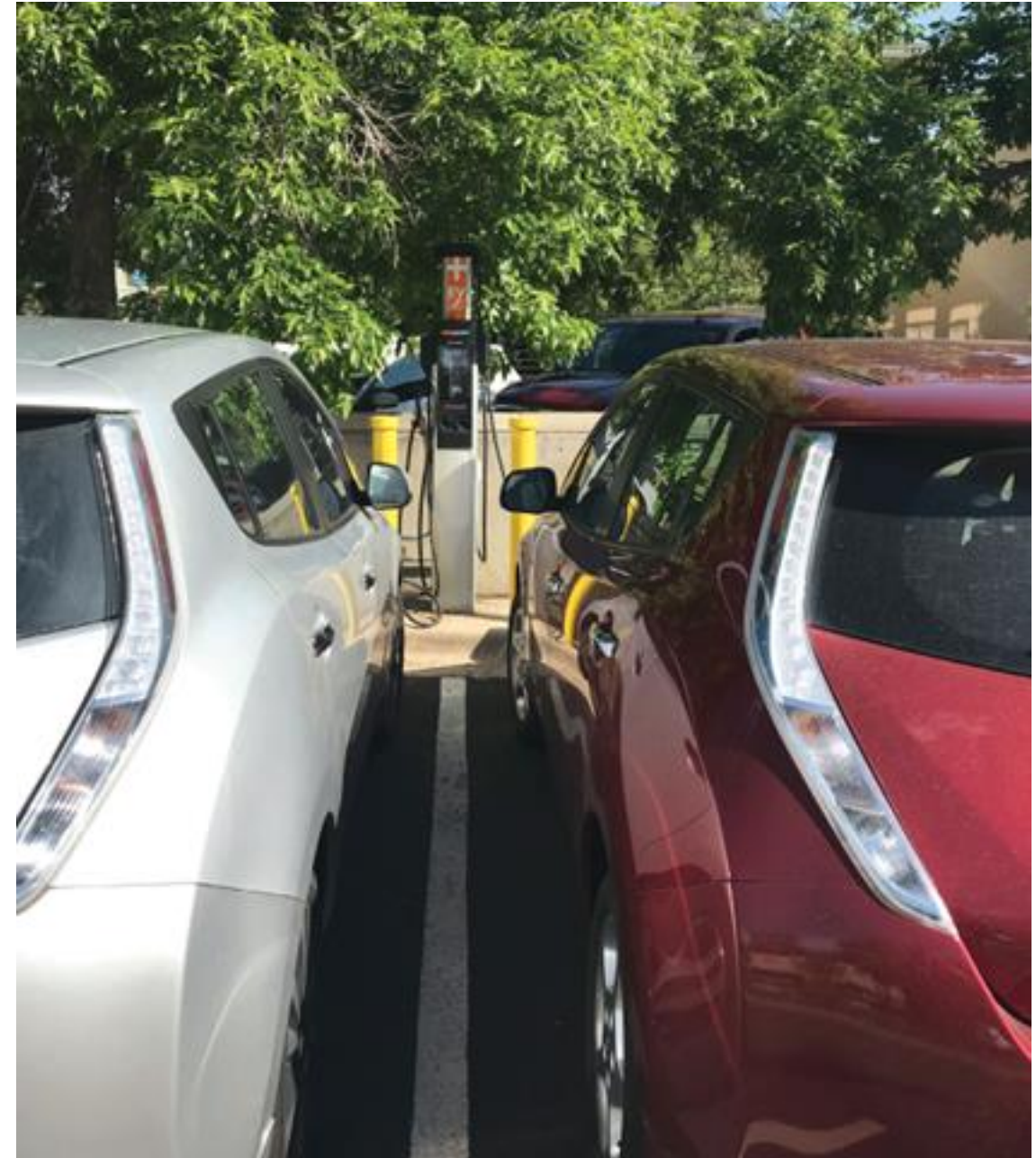
[Advanced Clean Cars II](#) (July-Oct)

- ACC requires vehicle makers to make and sell more electric vehicles



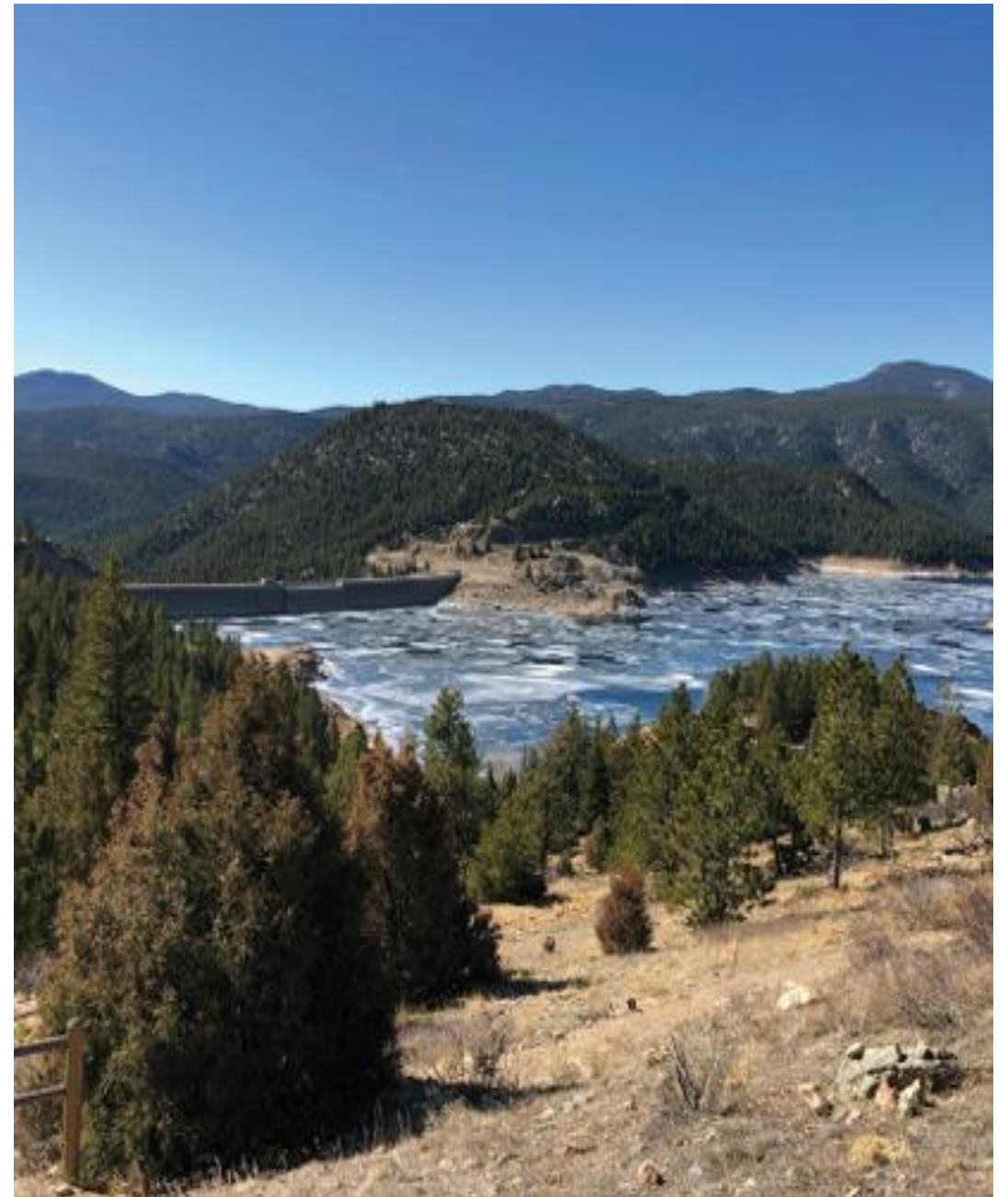
[Advanced Clean Trucks and Low-NO_x Omnibus Rule \(Regulation 20\)](#) being made Thursday-Friday April 19-21 [at AQCC!](#)

- Requires sales of electric medium and heavy-duty vehicles and gas-burning vehicles to be cleaner
- [CDOT Greenhouse Gas Planning Standard](#) “Mitigation Measures”: engage with [DRCOG](#) at their Transportation meetings



Water Quantity, Quality

- Historic drought
- Climate-influenced water quality impacts after wildfires, floods
- [Animal Feeding Operations Control Regulation Water Quality Control Commission \(WQCC\) Reg 81](#) (Public Hearing 4-26-23)
- [House Bill 23-1257 Mobile Home Park Water Quality](#) (check link for schedule)



Agriculture

- Impacted by climate change
- Source of carbon reduction and sequestration if properly managed
- Mostly not regulated as an industry
- [Statewide Organics Management Plan](#)
- [Senate Bill 23-191: Organics Diversion Study Bill](#) (check link for schedule)



Action Opportunities!

Air Quality Control Commission

May meeting:

- Existing Large Building Performance (Reg 28) **RULEMAKING HEARING**
- Disproportionately Impacted Communities Permitting (Reg 3) **RULEMAKING HEARING**
- Manufacturing air and climate pollution (Reg 27) **START TO RULE**

Watch AQCC website to sign up for meetings and comment:

<https://cdphe.colorado.gov/aqcc>

Improvements to Public Comment coming in May!!

- *Longer registration opening / lottery*
- *Send in videos/recordings*
- *Send your comments directly to the state: cdphe.aqcc-comments@state.co.us*



Closing Discussion / Final Thoughts

- Next Steps
- Google Docs
- PowerPoint will be a source of links for action items
- Communications – how would you like to be notified of opportunities?
- At 6pm, the meeting will conclude
 - However if you wish to stay and wrap up any final thoughts we will stick around!