



Welcome!

BERT Public Meeting
Wednesday, September 13, 2023



Boulder to Erie Regional Trail (BERT)



CDR ASSOCIATES
COLLABORATIVE DECISION RESOURCES



AGENDA



1. Welcome & Introductions
2. Project Updates
3. Presentation of Conceptual Alignments
4. Open House Discussion
5. Wrap Up & Next Steps



PROJECT TEAM INTRODUCTIONS



CDR ASSOCIATES
COLLABORATIVE DECISION RESOURCES



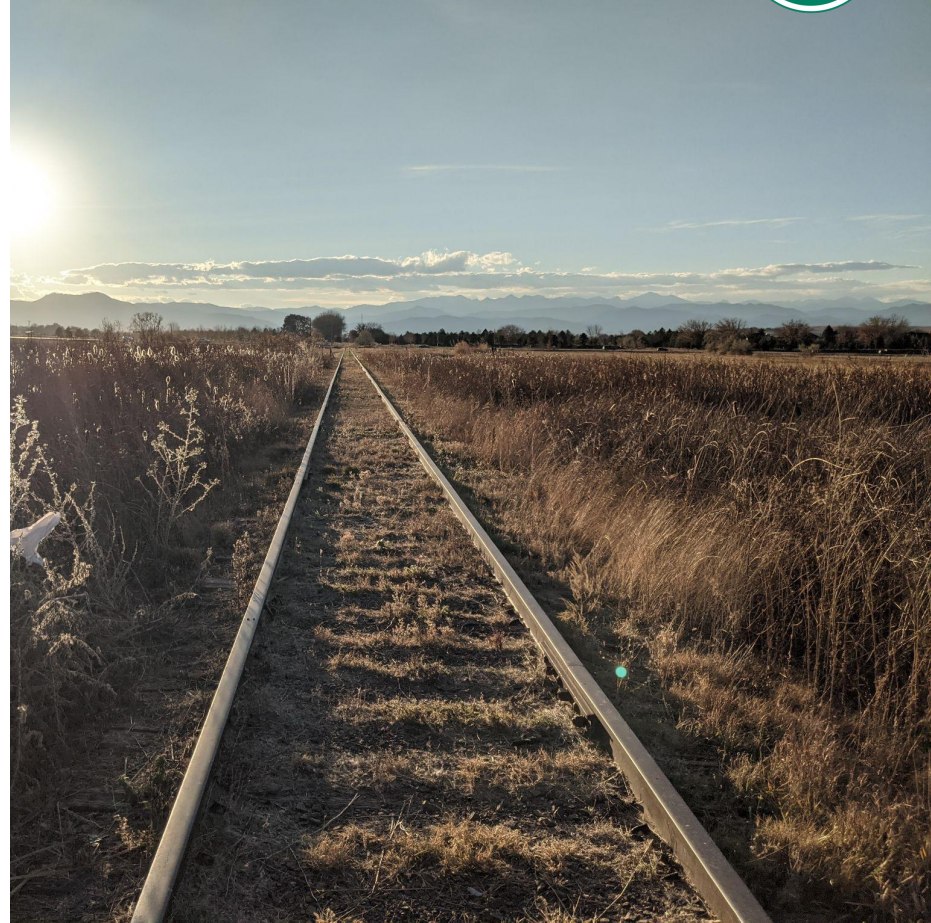
Tonya Luebbert
Regional Trails Planner
tluebbert@bouldercounty.gov



PROJECT UPDATES



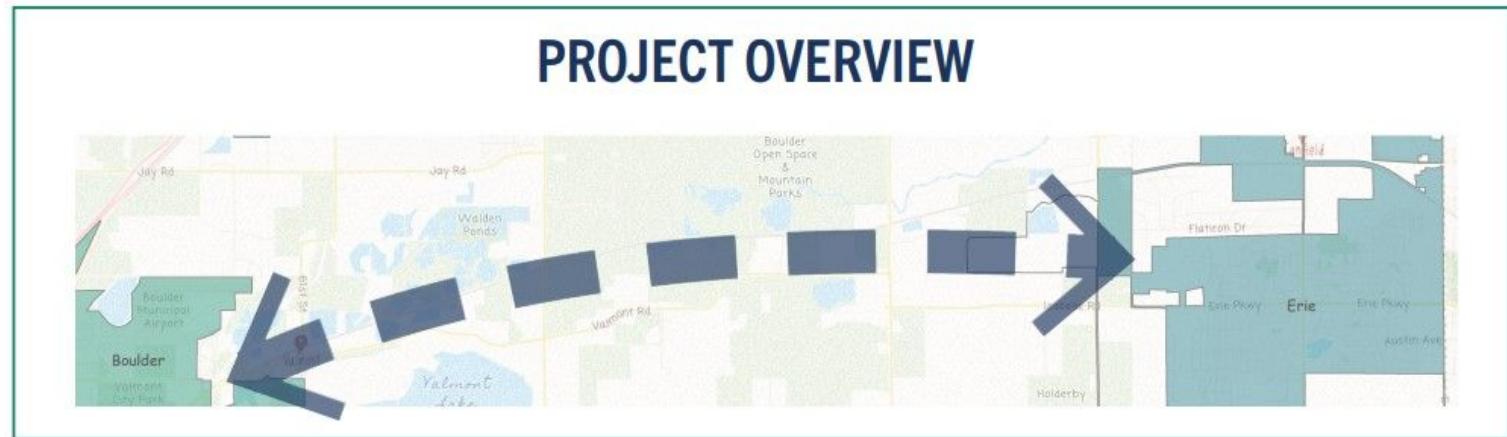
- Project Overview
- Where We Left Off
- Expanded Scope
- OSMP MOU
- Schedule and Activities
- Ongoing Outreach and Partner Coordination
- Evaluation Criteria
- Connectivity Workshop



PROJECT UPDATES: Project Overview



- Evaluating options for the creation of a new soft-surface regional trail linking the City of Boulder and Erie
- BERT connection identified in the county's regional trails prioritization process in 2003 and is eligible for funding through the Countywide Sales Tax Ballot passed by voters in 2007
- Boulder Valley Comprehensive Plan and Boulder County Transportation Master Plan identify this trail connection as an important link
- 2022 Ballot: Transportation Sales Tax extended in perpetuity



PROJECT UPDATES: Where We Left Off



- Last public meeting was in Summer of 2020
 - ◆ Virtual meeting after pandemic hit
- Discussion at meeting focused on alignment options, particularly crossings
 - ◆ Discussion of options for 287 crossing
- Some field work done to walk alignment and meet with landowners regarding crossings



PROJECT UPDATES: Expanded Scope



- Expanded scope considered in 2020 due to concerns from stakeholders and Boulder County Board of County Commissioners
- Addressing environmental concerns by considering additional alignments outside RTD corridor
- Engagement with Native American Tribal Nations and local indigenous groups



PROJECT UPDATES: OSMP MOU



- Signed late 2022
- Resulted in agreement to include City of Boulder-owned and other lands managed by OSMP outside the RTD rail corridor in this process
- Master planning process is exploring the RTD rail corridor, Boulder County right-of-way, and alignment options on OSMP property outside the RTD rail corridor



PROJECT UPDATES: Schedule and Activities



- Development of evaluation criteria
- Performing an alternatives analysis using that evaluation criteria
- Selecting the conceptual trail alignment(s) for further consideration
 - ◆ Not intended to result in preferred alignment



The Boulder to Erie Regional Trail (BERT) Master Plan project is an important step in creating a trail that we can walk, roll, run, ride and enjoy between Boulder and Erie. However, it's not the only step and not the last step. To understand the complex process it will take before a trail is completed and ready to enjoy, take a look at the diagram above.

We're in the BERT Master Plan Project Process phase, which will result in the BERT Final Master Plan. When the Master Plan is completed, we will identify funding sources and potential phasing. After that, we will move into final design and engineering. Throughout this process, Boulder County will work on obtaining all the necessary approvals and permitting. It is likely that the trail will be built in sections as funding allows.

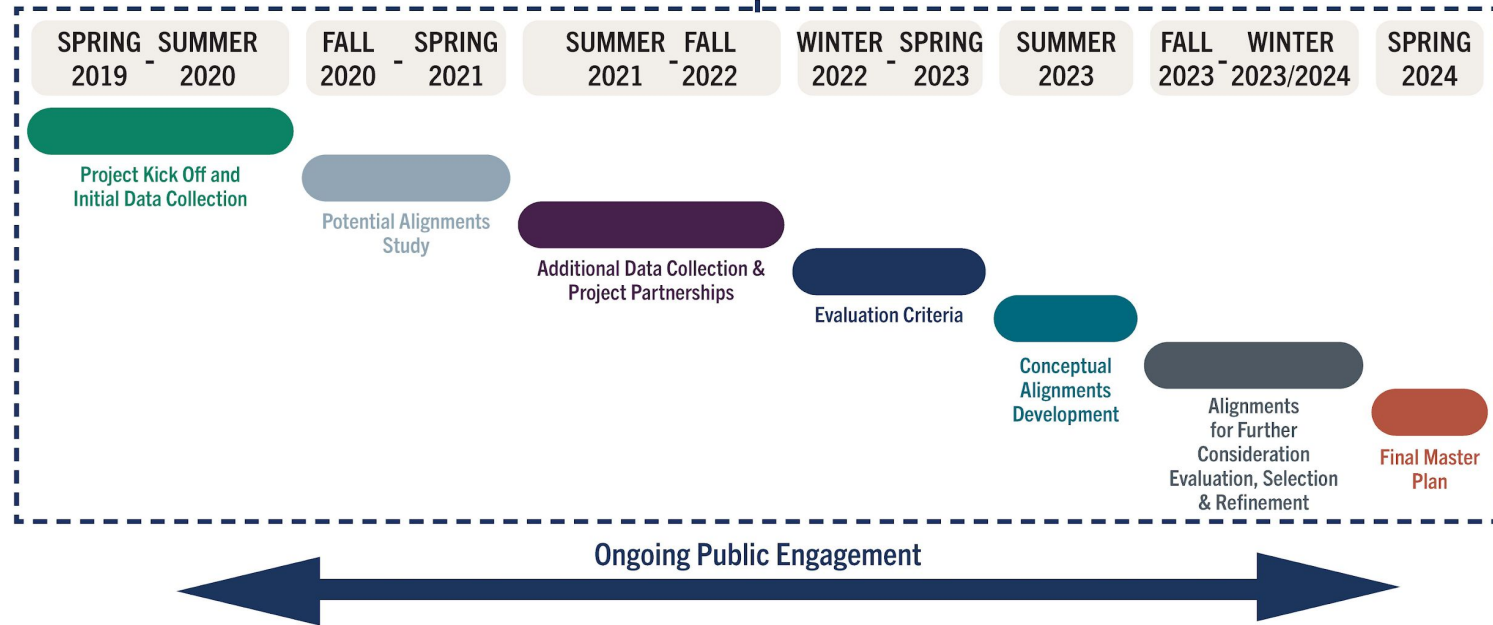
When all segments are built, we'll be able to experience the trail in its entirety.



PROJECT UPDATES: Schedule and Activities



BERT Master Plan Project Process



PROJECT UPDATES: Ongoing Outreach



- Steering Committee
- Native American Outreach
- Community Working Group
- Public Meetings
- Ongoing Conversations with Landowners and Neighbors



PROJECT UPDATES: Ongoing Outreach



BERT Master Plan Engagement & Coordination



Steering Committee

Community Working Group

23 Total Members

- Cycling groups
- Environmental nonprofits
- Corridor landowners
- Wildlife groups
- Erie OSTAB
- Trails organizations
- Equestrian users

Landowner Coordination

- Local landowner Interviews for those directly adjacent to the corridor

Additional Partner Meetings

- Boulder County Departments (Parks and Open Space, Transportation)
- Mile High Flood District
- Site Visit with OSMP
- Coordination with RTD
- Coordination with CPW

Public Meetings & Neighborhood Workshops

- Four Neighborhood Workshops
- Virtual Public Meeting
- Two Open Houses
- Online Survey

Native American Outreach

- Coordination with local tribal groups and Colorado Commission on Indian Affairs
- 14 Formal Tribal Letters about the project
- Outreach to Native American Community Members

PROJECT UPDATES: Recent Partner Coordination



- Connectivity Workshop
- East Boulder Creek Site Management Plan
- Walking the OSMP property
- Meeting with RTD
- Rails-to-Trails Conservancy



PROJECT UPDATES: Evaluation Criteria



- **Evaluation Criteria:** *tool the project team will use to evaluate alignment concepts*
- Rooted in reasoning for trail and project goals
 - ◆ Transportation and Recreation
 - ◆ Increased Safety
 - ◆ Multi-Use
 - ◆ Low Environmental and Cultural Impacts
 - ◆ Implementable
 - ◆ Low Adjacent Property Impacts
 - ◆ Trail User Experience



PROJECT UPDATES: Evaluation Criteria Categories



Safety

Resource
Considerations

Implementation
+ Maintenance

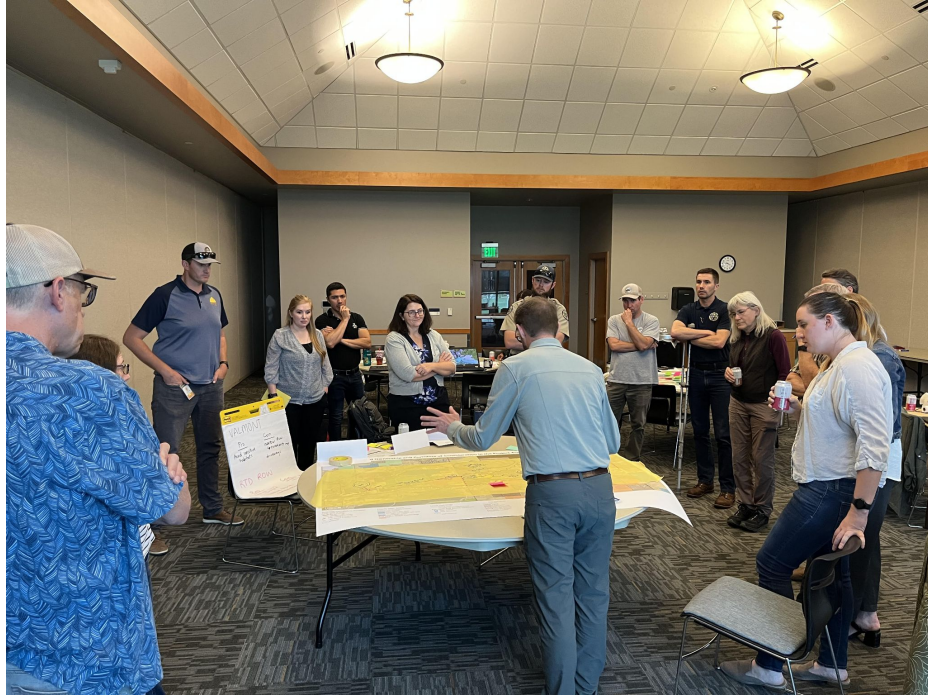
Adjacent
Property
Considerations

Trail User
Experience

PROJECT UPDATES: Connectivity Workshop



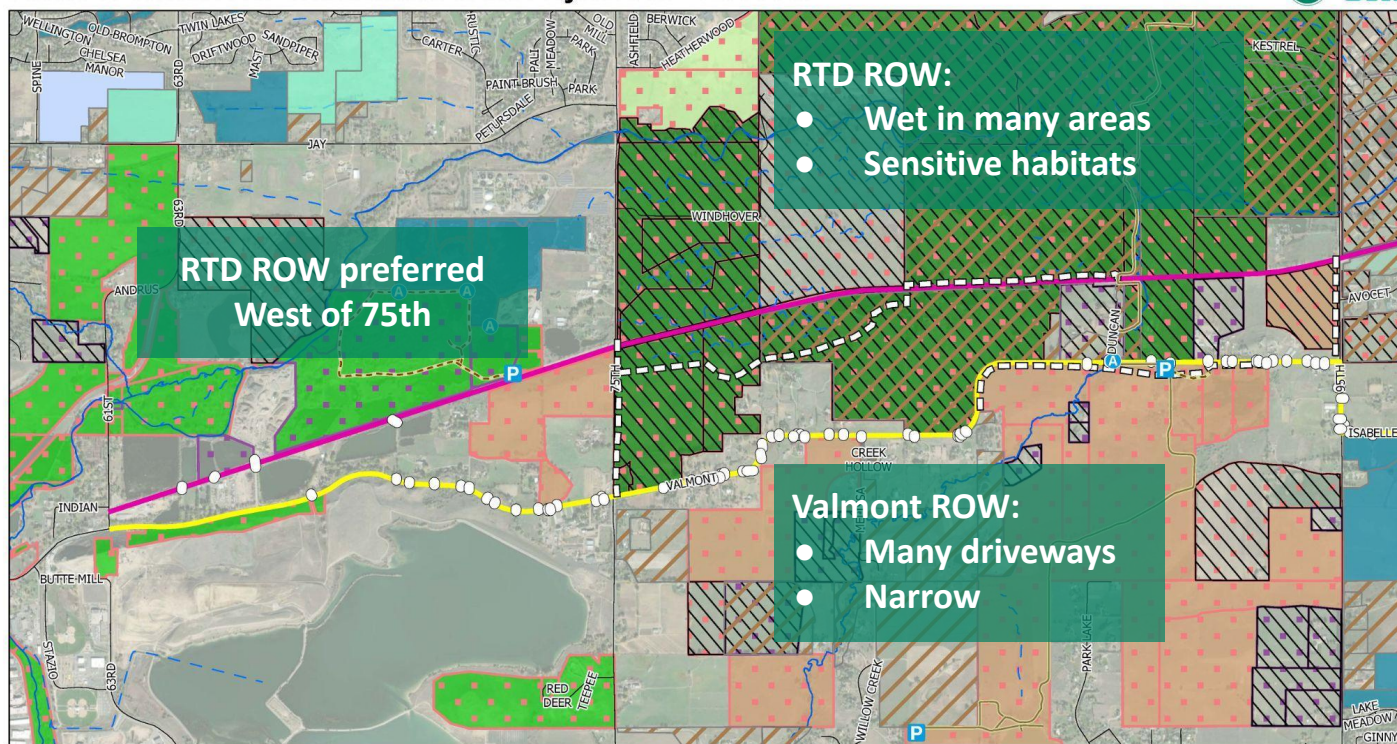
- Gathered representatives from Boulder, Erie, OSMP, CDOT, and CPW in May 2023
- **Goal: collaboratively identify two or three conceptual trail alignments**
- Gathered details to understand opportunities and constraints of each corridor



PROJECT UPDATES: Connectivity Workshop



Photos of Corridors for Consideration in the Project Area - 61st-95th



Corridors for Consideration

- Routes on OSMP
- RTD Rail Corridor
- Valmont/Isabelle Corridor
- 287 Crossing at Boulder Creek A
- 287 Crossing at Boulder Creek B
- Driveways

County Open Space

- County Conservation Easement
- County Managed
- County Owned Open Space
- Joint County and Municipal Open Space
- Miscellaneous Easement

Linear Hydrology

- Perennial Stream
- Ephemeral and Intermittent Streams

Managed Trail Access Locations

- OSMP Trailhead
- OSMP Access Point

Managed Trail Access Locations

- OSMP Trailhead with Designated Parking
- Access Point - Parking Along Public Streets Unless Otherwise Posted

Trails

- OSMP Hiking Trail
- OSMP Multi-Use Trail

Trails

- OSMP Hiking Trail
- OSMP Multi-Use Trail
- OSMP Land
- No Public Access
- OSMP Fee Ownership
- OSMP Joint Ownership

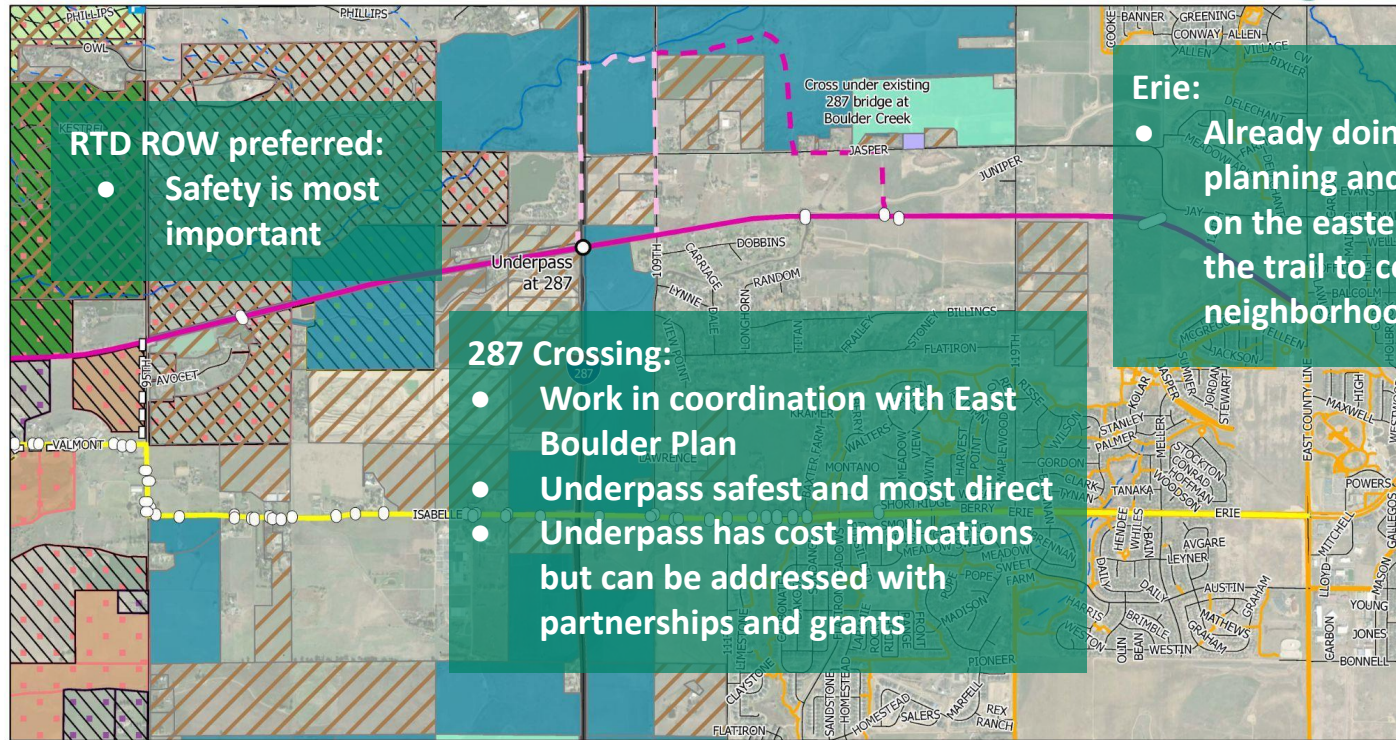
Note: The Corridors for Consideration on these maps represent general corridors and could contain multiple conceptual trail alignments for further consideration.



PROJECT UPDATES: Connectivity Workshop



Photos of Corridors for Consideration in the Project Area - 95th-Erie



Corridors for Consideration

- Routes on OSMP
- RTD Rail Corridor
- Walmart/Isabelle Corridor
- 287 Crossing at Boulder Creek A
- 287 Crossing at Boulder Creek B
- Driveways

County Open Space

- County Conservation Easement
- County Managed
- County Owned Open Space
- Joint County and Municipal Open Space
- Miscellaneous Easement

Linear Hydrology

- Perennial Stream
- Epheermal and Intermittent Streams

Managed Trail Access Locations

- OSMP Trailhead
- OSMP Access Point

Managed Trail Access Locations

- OSMP Trailhead with Designated Parking
- Access Point - Parking Along Public Streets Unless Otherwise Posted

Trails

- OSMP Hiking Trail
- OSMP Multi-Use Trail
- OSMP Land
- No Public Access
- OSMP Fee Ownership
- OSMP Joint Ownership

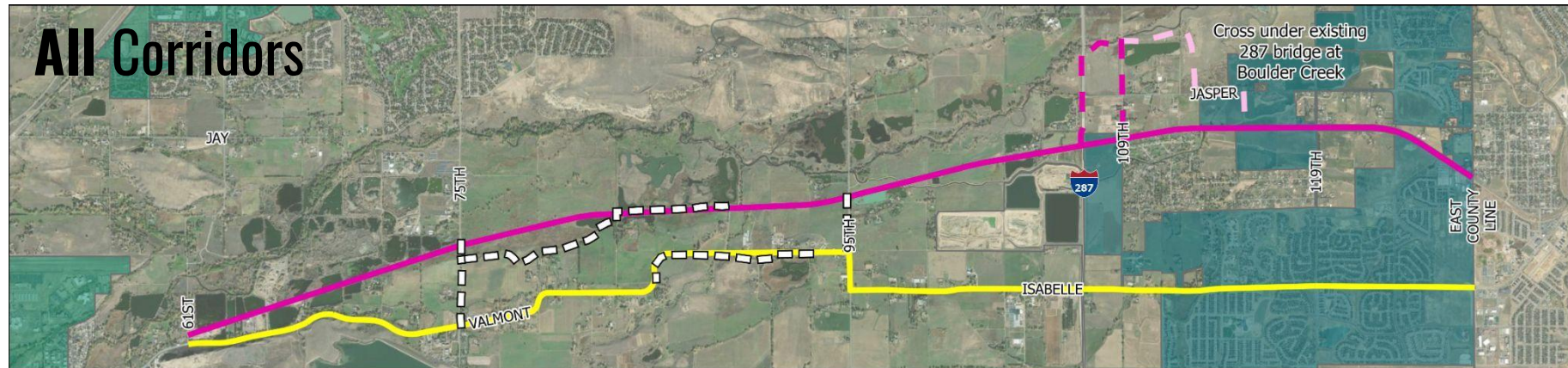
Note: The Corridors for Consideration on these maps represent general corridors and could contain multiple conceptual trail alignments for further consideration.



CONCEPTUAL ALIGNMENTS: Overview



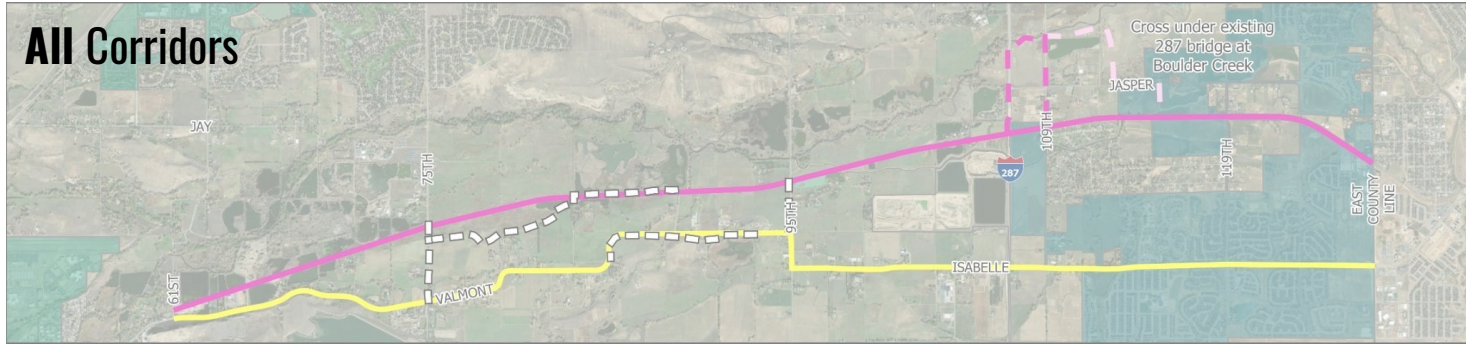
All Corridors



CONCEPTUAL ALIGNMENTS: Overview

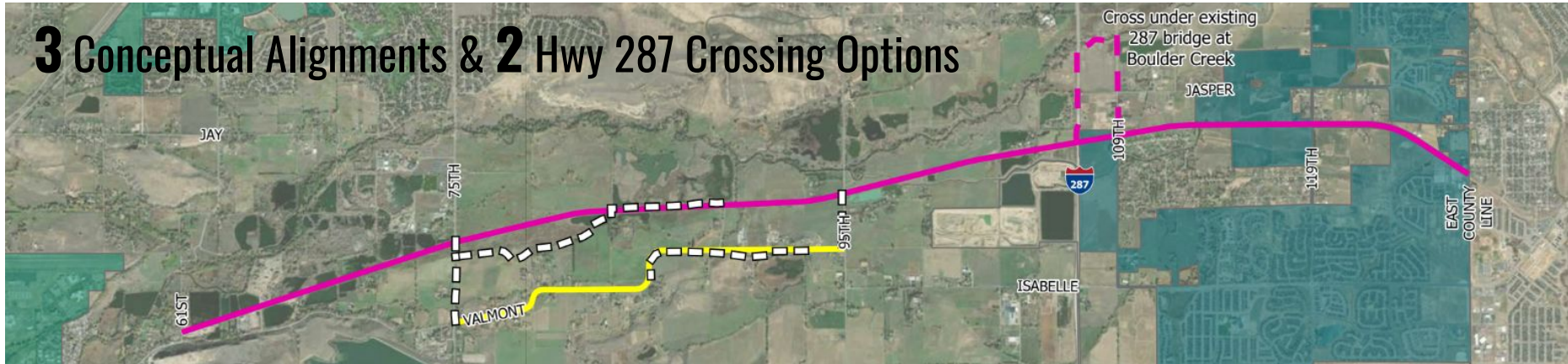


All Corridors



narrowed into

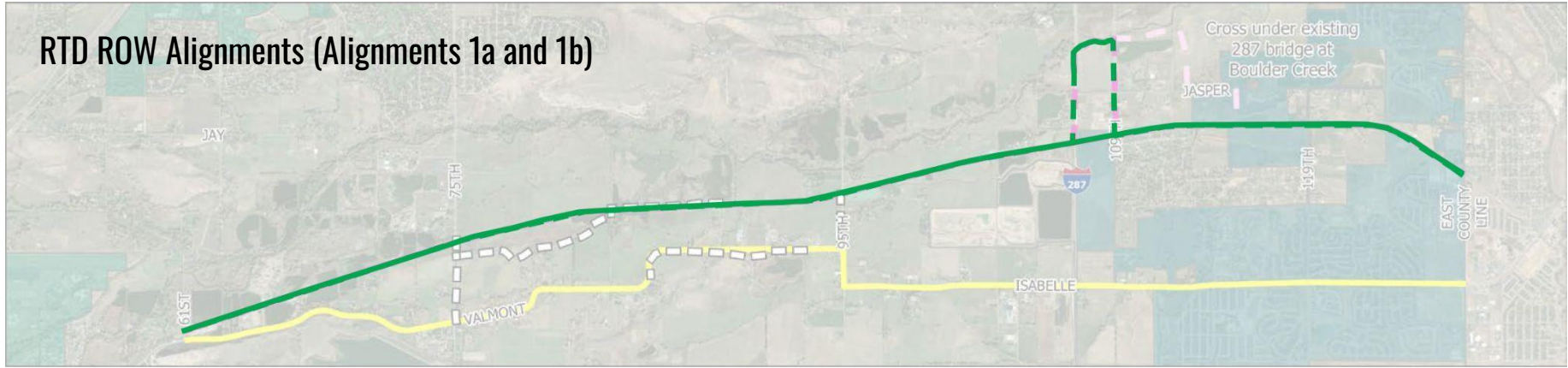
3 Conceptual Alignments & 2 Hwy 287 Crossing Options



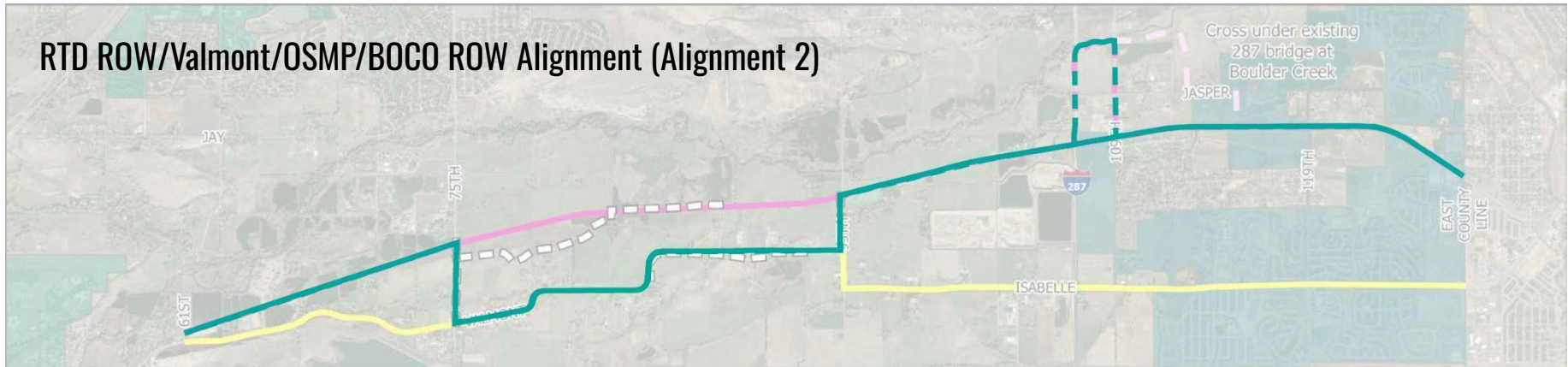
CONCEPTUAL ALIGNMENTS: Overview



RTD ROW Alignments (Alignments 1a and 1b)



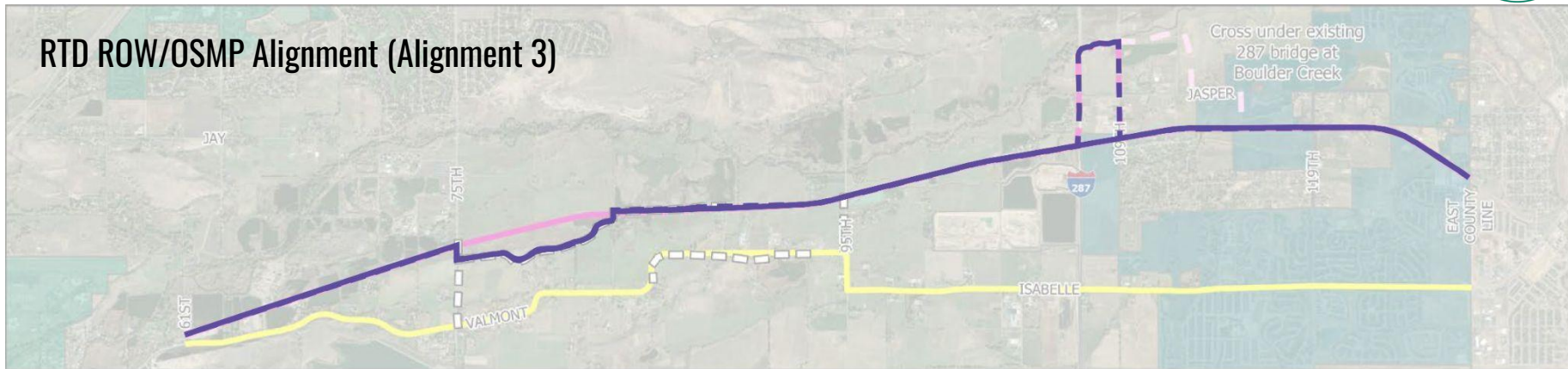
RTD ROW/Valmont/OSMP/BOCO ROW Alignment (Alignment 2)



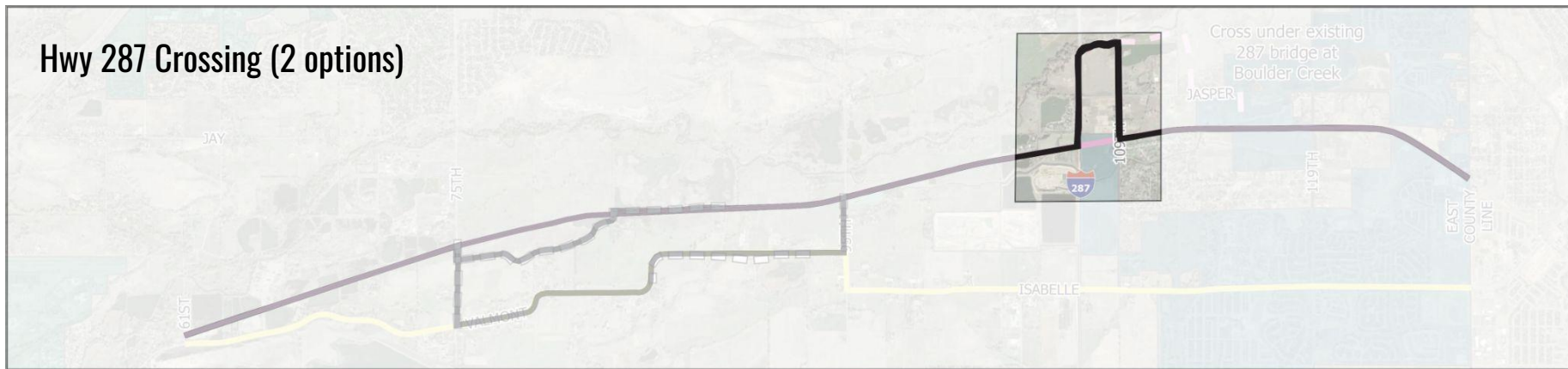
CONCEPTUAL ALIGNMENTS: Overview



RTD ROW/OSMP Alignment (Alignment 3)



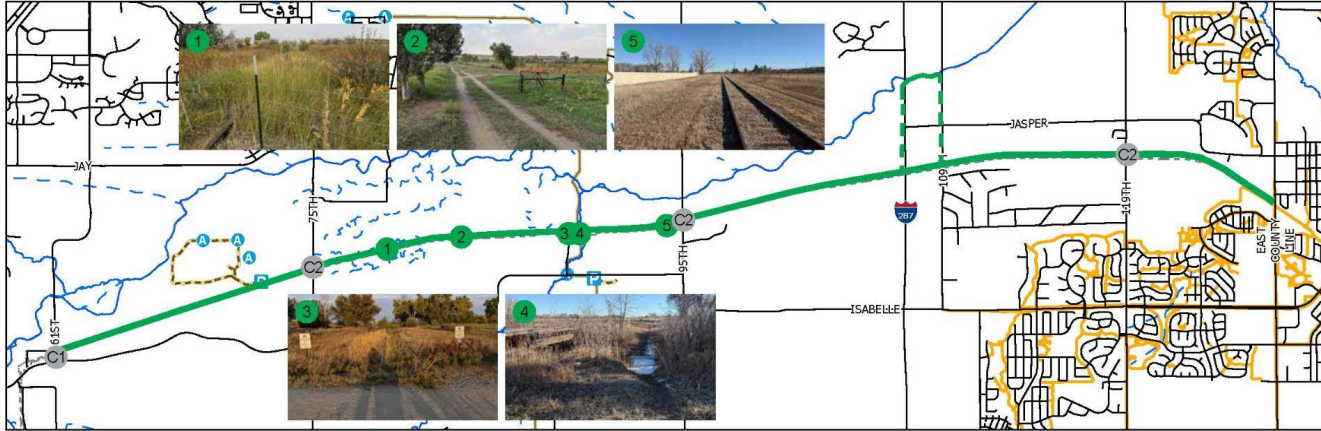
Hwy 287 Crossing (2 options)



CONCEPTUAL ALIGNMENTS: 1a & 1b



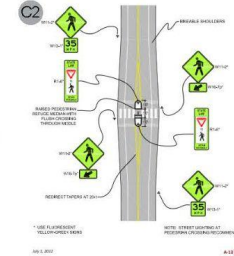
RTD ROW Alignments (1a & 1b)



Notes:

- These alignments are fully in the RTD ROW
- There are 2 alignment variations:
 - (1a) - trail on top the existing rail bed
 - (1b) - the trail in the ROW, not on the rail bed itself, but with crossings of the rail bed as needed

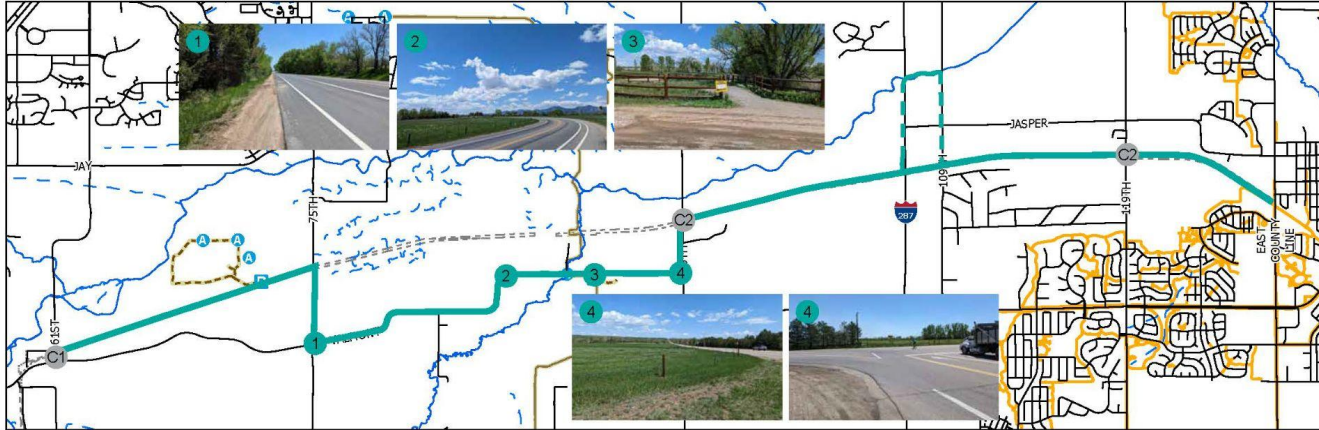
Crossings:



CONCEPTUAL ALIGNMENTS: 2



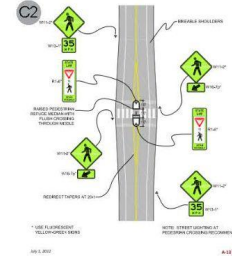
RTD ROW/Valmont/OSMP/BOCO ROW Alignment (2)



Notes:

- (2) - alignment is a combination of RTD ROW, OSMP, and BOCO ROW/Valmont around the 75th to 95th section:
 - **61st to 75th** - RTD ROW & CPW/OSMP Road to Sawhill Ponds
 - **RTD ROW to Valmont** - OSMP/BOCO ROW
 - **75th to 95th** - BOCO ROW/OSMP
 - **Valmont to RTD ROW** - BOCO ROW
 - **95th to Erie** - RTD ROW

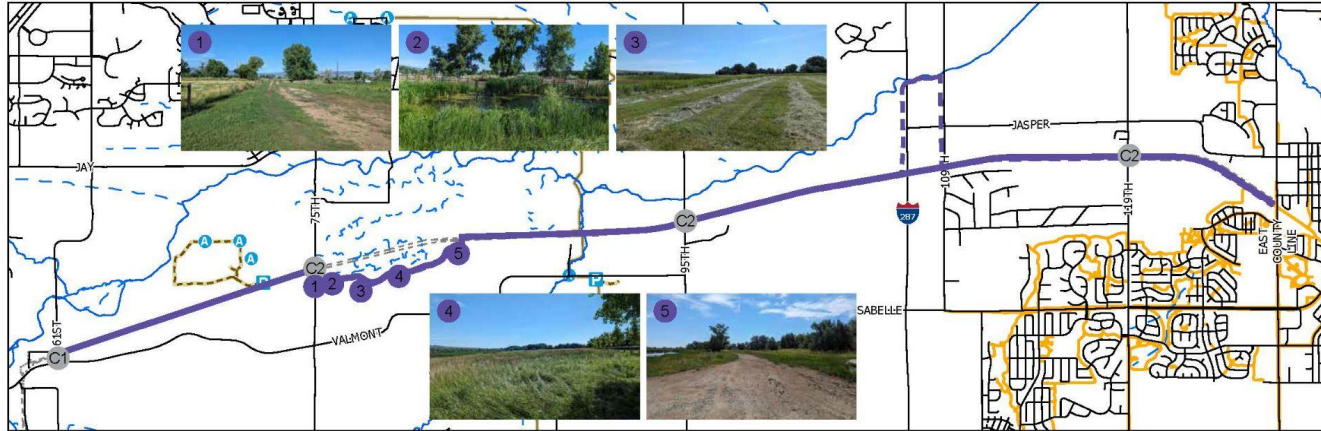
Crossings:



CONCEPTUAL ALIGNMENTS: 3



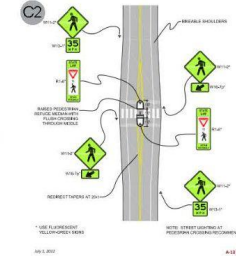
RTD ROW/OSMP Alignment (3)



Notes:

- (3) - alignment is a combination of RTD ROW and OSMP:
 - **61st to 75th** - RTD ROW & CPW/OSMP road to Sawhill Ponds
 - **RTD ROW to OSMP Route (along 75th)** - BOCO ROW/OSMP property
 - **75th to 95th** - OSMP property & RTD ROW
 - **95th to Erie** - RTD ROW

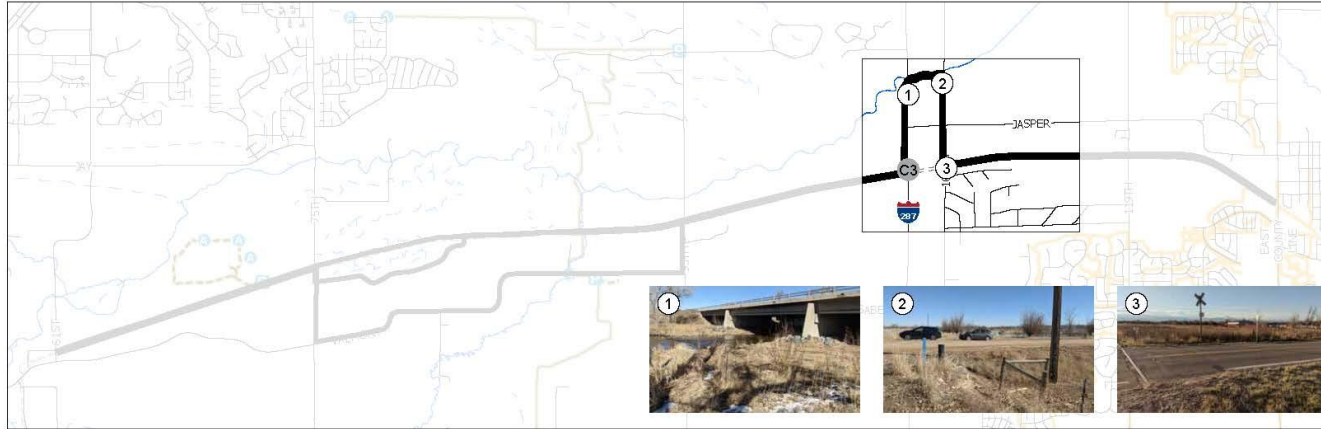
Crossings:



CONCEPTUAL ALIGNMENTS: Hwy 287 Crossing



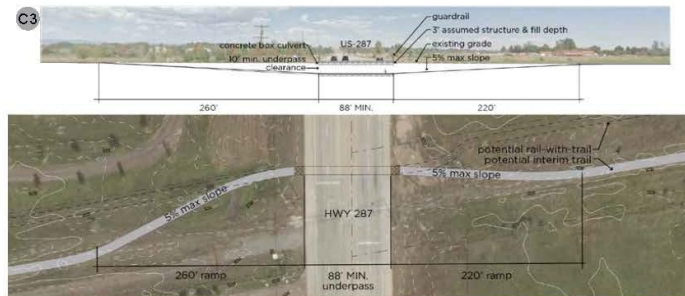
Hwy 287 Crossing (2 options)



Notes:

- Two options are being considered for crossing Hwy 287:
 - One is an underpass in line with the RTD ROW under the road
 - One is a route that goes along Hwy 287 up to the existing Boulder Creek crossing under 287 and uses that to get the trail under 287
 - This route would then go along Boulder Creek until it reached 109th and then take 109th back to the RTD ROW.

Crossing:



- What trade offs exist between the alignment concepts?
Consider: Environmental, Safety, Visitor Experience
- Of the alignment options, which one stands out to you as most appealing? Why?
- What concerns do you have about the alignment options?

NEXT STEPS: Next Steps



Fall 2023	Online Survey	Online survey to gauge local public attitudes towards each conceptual trail alignment under consideration
Fall 2023	Alignments for further consideration evaluation and selection	Conceptual alignments will be evaluated and alignments for further consideration will be selected and reviewed
Spring 2024	Open House/Public Meeting	Open house/public meeting to present conceptual alignments for further consideration before final report submittal to Boulder County
Spring 2024	Final Submittal	Final Master Plan submittal



CONTACT US

Tonya Luebbert, Regional Trails Planner
tluebbert@bouldercounty.gov

Visit the Website: boco.org/BERT

