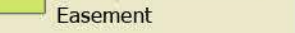


Legend

Cypress spurge Status

Positive - Species found
or documented but no
treatment conducted

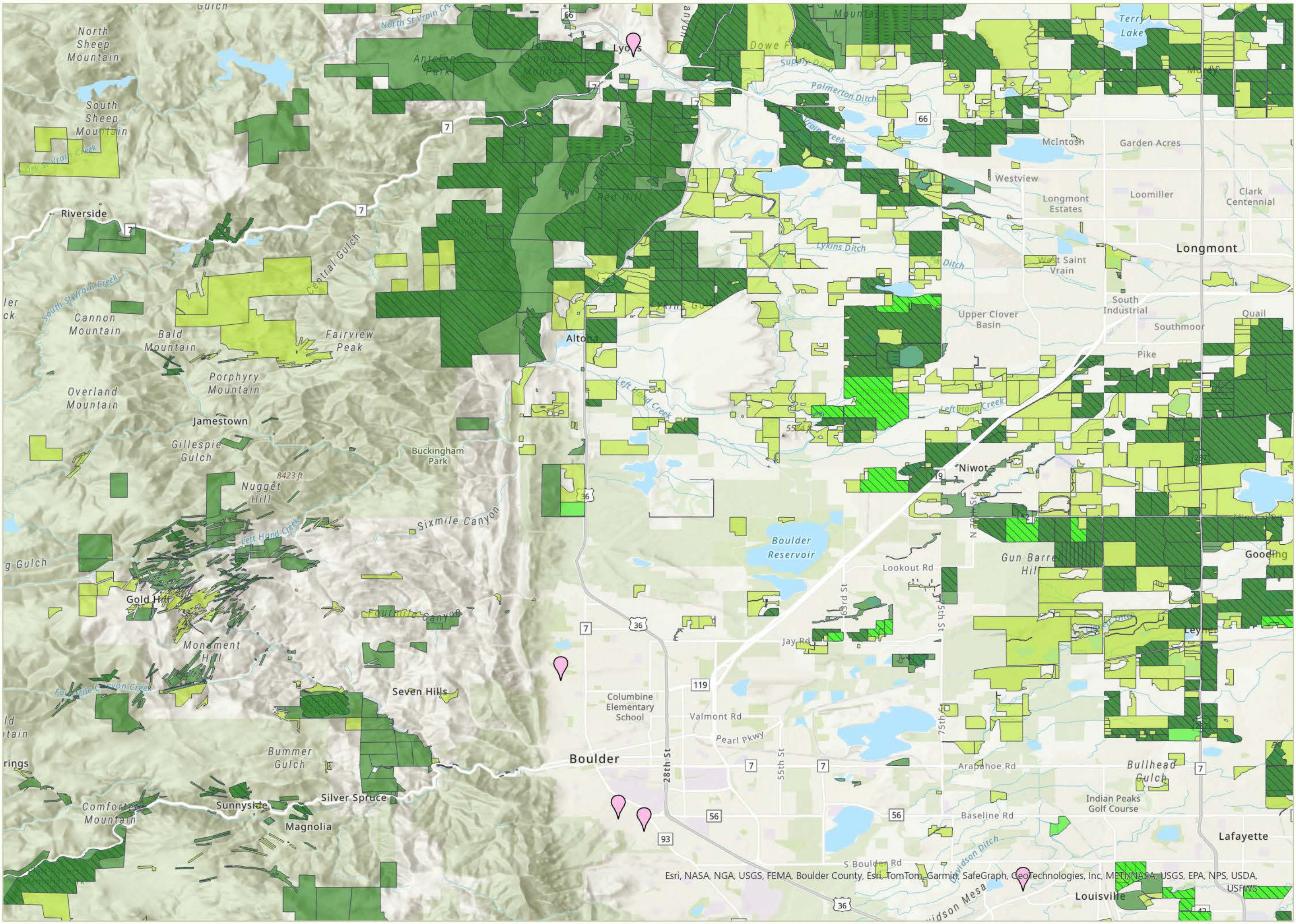
Boulder County Open Space

-  County Open Space
-  County Conservation Easement
-  Joint County/City Open Space

This map was compiled using the current (01/01/2014 – 04/08/2024) publicly available records provided by multiple sources (citizens, municipalities, NGO, USFS, BCPOS, BCCPP, etc.), on Edmaps. Therefore, we cannot know the true accuracy or status other than what has been reported. Thus, this map may not reflect all infestations county wide.





The user agrees to all Terms of Use set forth by Boulder County. For Terms of Use, please visit: www.bouldercounty.org/mapdisclaimer



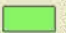


Legend

Dyers woad Status

-  Positive - Species found or documented but no treatment conducted
-  Treated - Species found and treatment conducted

Boulder County Open Space

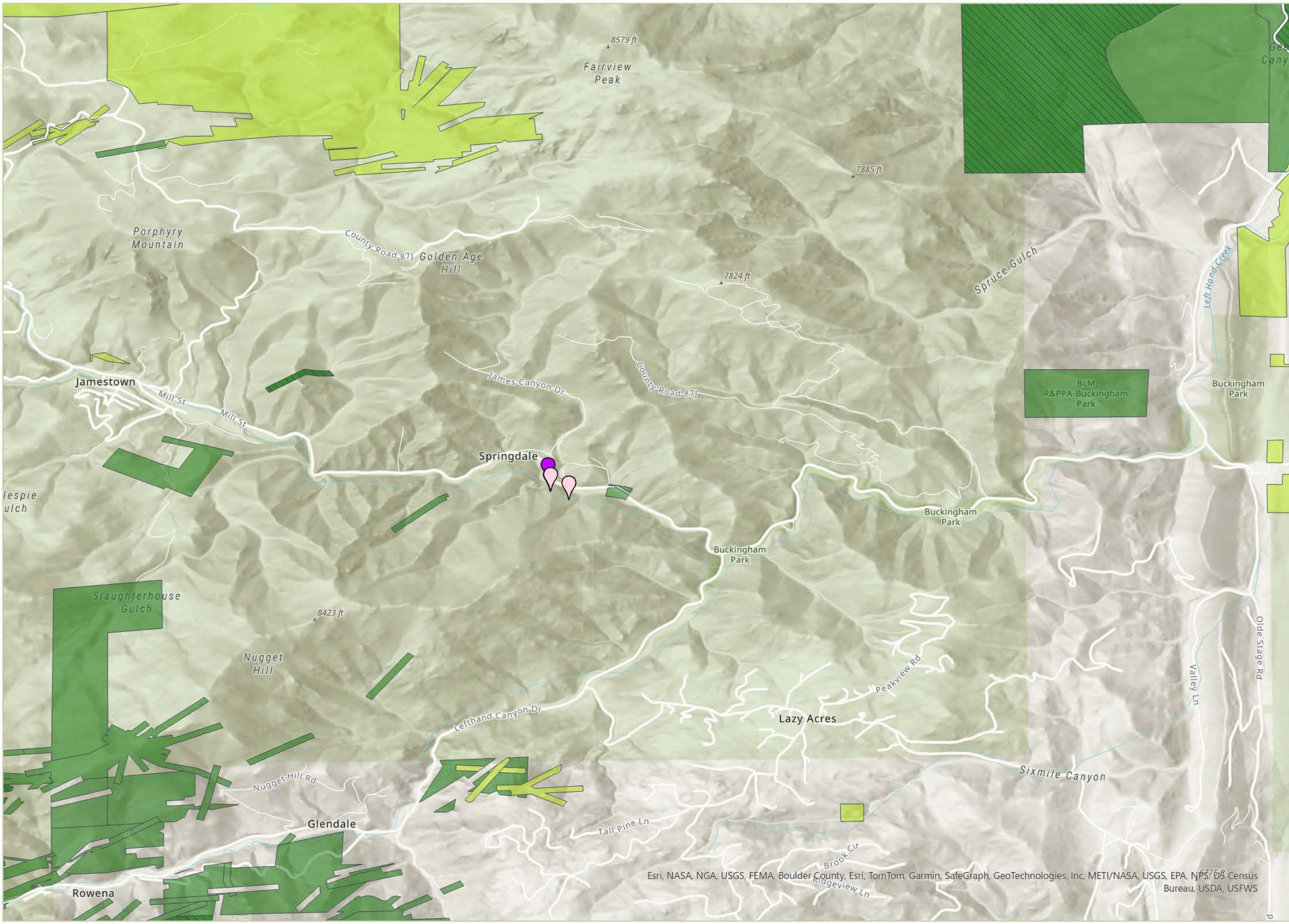
-  County Open Space
-  County Conservation Easement
-  Joint County/City Open Space

This map was compiled using the current (01/01/2014 – 04/08/2024) publicly available records provided by multiple sources (citizens, municipalities, NGO, USFS, BCPOS, BCCPP, etc.), on Edmaps. Therefore, we cannot know the true accuracy or status other than what has been reported. Thus, this map may not reflect all infestations county wide.




The user agrees to all Terms of Use set forth by Boulder County. For Terms of Use, please visit: www.bouldercounty.org/mapdisclaimer

FILE: V:\gis\edmaps\Staff\Boulder\Treatment_Map\List A Edmaps\EdMaps.aprx



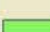


Legend

Giant reed Status

 Positive - Species found or documented but no treatment conducted

Boulder County Open Space

-  County Open Space
-  County Conservation Easement
-  Joint County/City Open Space

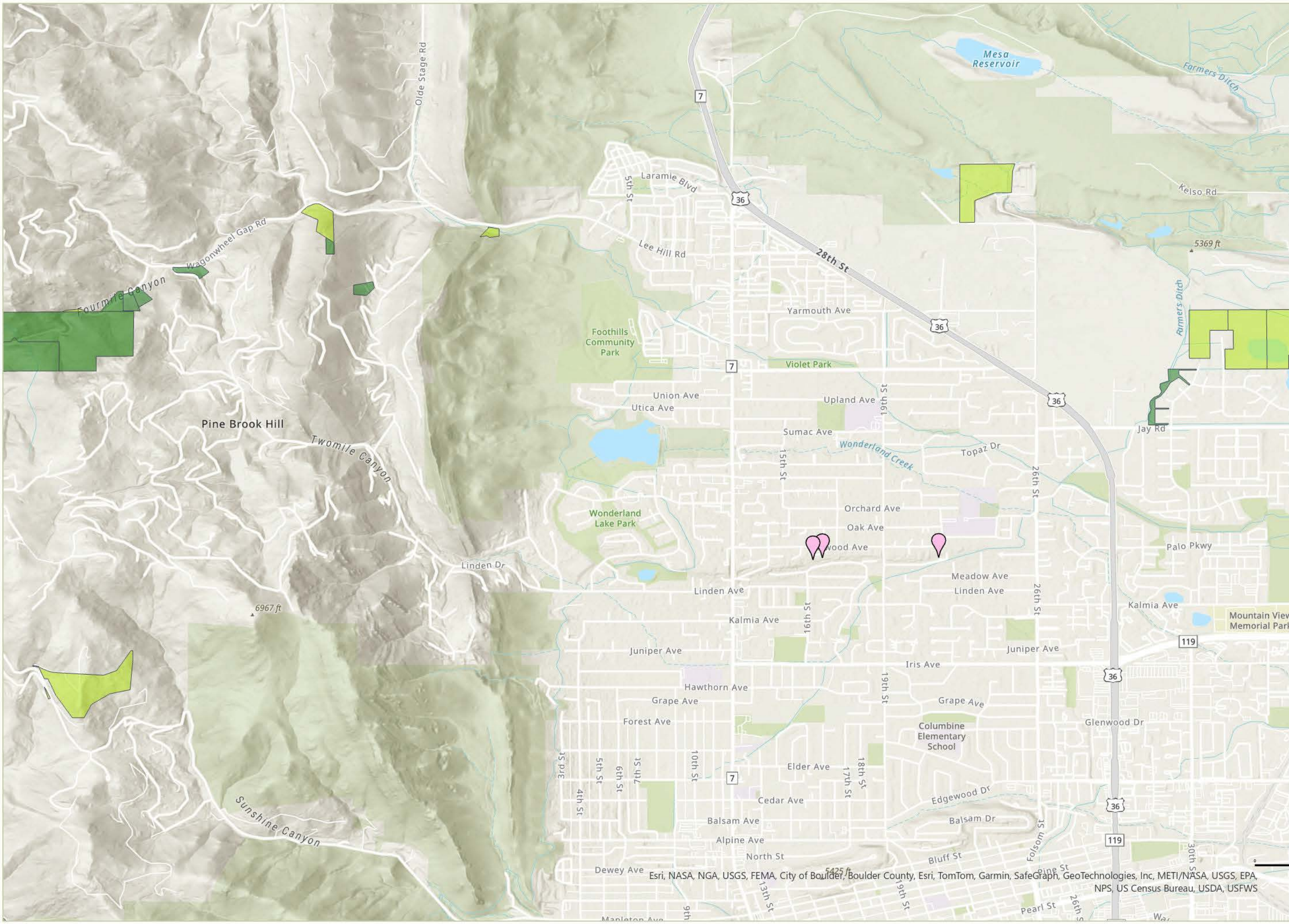
This map was compiled using the current (01/01/2014 – 04/08/2024) publicly available records provided by multiple sources (citizens, municipalities, NGO, USFS, BCPOS, BCCPP, etc.), on Edmaps. Therefore, we cannot know the true accuracy or status other than what has been reported. Thus, this map may not reflect all infestations county wide.

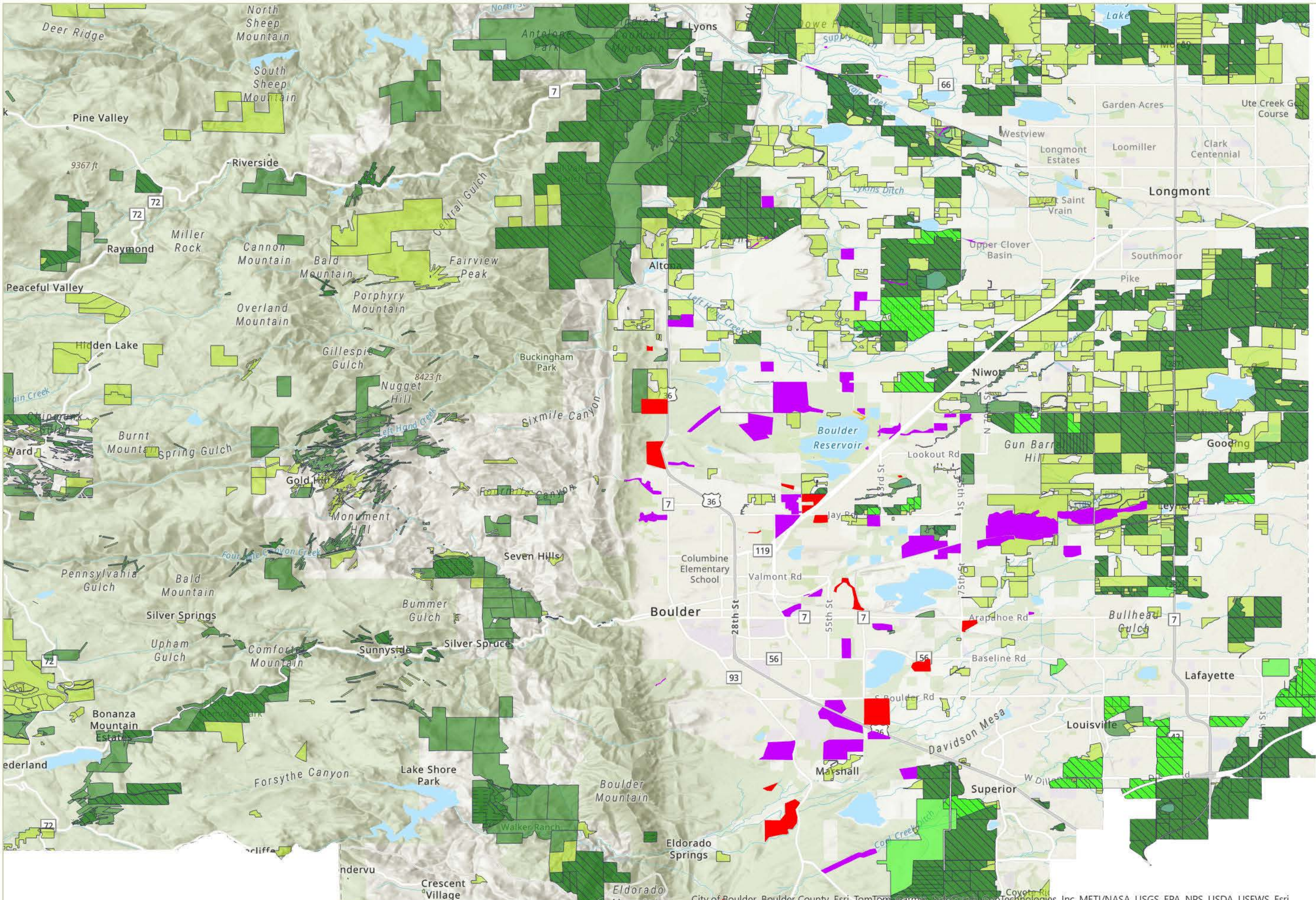


0 1 2
MILES

The user agrees to all Terms of Use set forth by Boulder County. For Terms of Use, please visit: www.bouldercounty.org/mapdisclaimer

FILE: V:\gis\reports\GIS\GIS\Treatment_Maps\List A Edmaps\EdMaps.aprx





Legend

Hairy willowherb Status

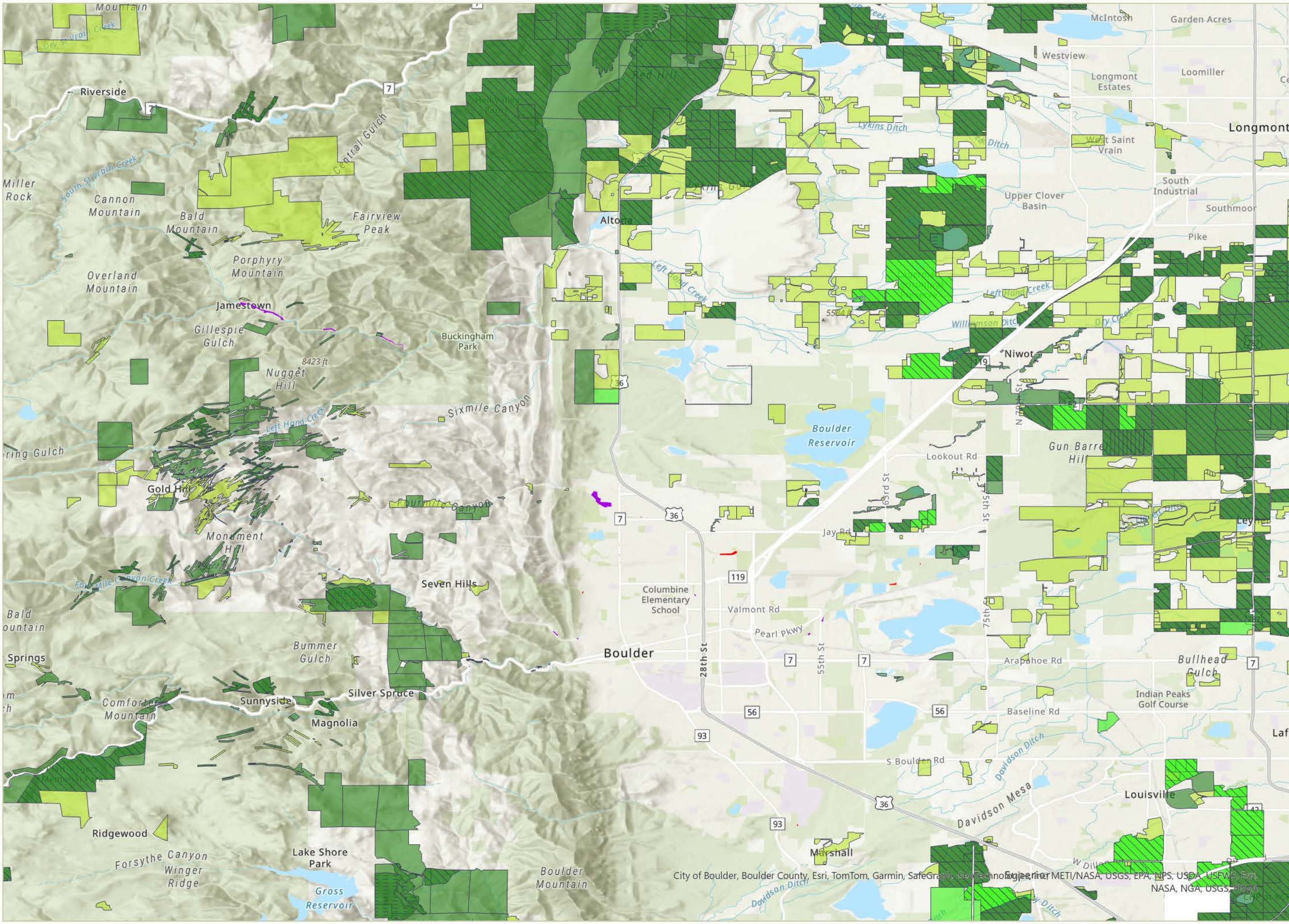
- Eradicated - Species not found after set amount of years determined by Colorado Department Of Agriculture
- Negative - Species not found during site visit
- Positive - Species found or documented but no treatment conducted
- Treated - Species found and treatment conducted

Boulder County Open Space

- County Open Space
- County Conservation Easement
- Joint County/City Open Space

This map was compiled using the current (01/01/2014 – 04/08/2024) publicly available records provided by multiple sources (citizens, municipalities, NGO, USFS, BCPOS, BCCPP, etc.), on Edmaps. Therefore, we cannot know the true accuracy or status other than what has been reported. Thus, this map may not reflect all infestations county wide.





Edmaps Reported
List A Knotweeds
(Japanese, Giant, Bohemian)
Infestations In
Boulder County



Legend

Knotweeds Status

- Eradicated - Species not found after set amount of years determined by Colorado Department of Agriculture
- Treated - Species found and treatment conducted

Boulder County Open Space

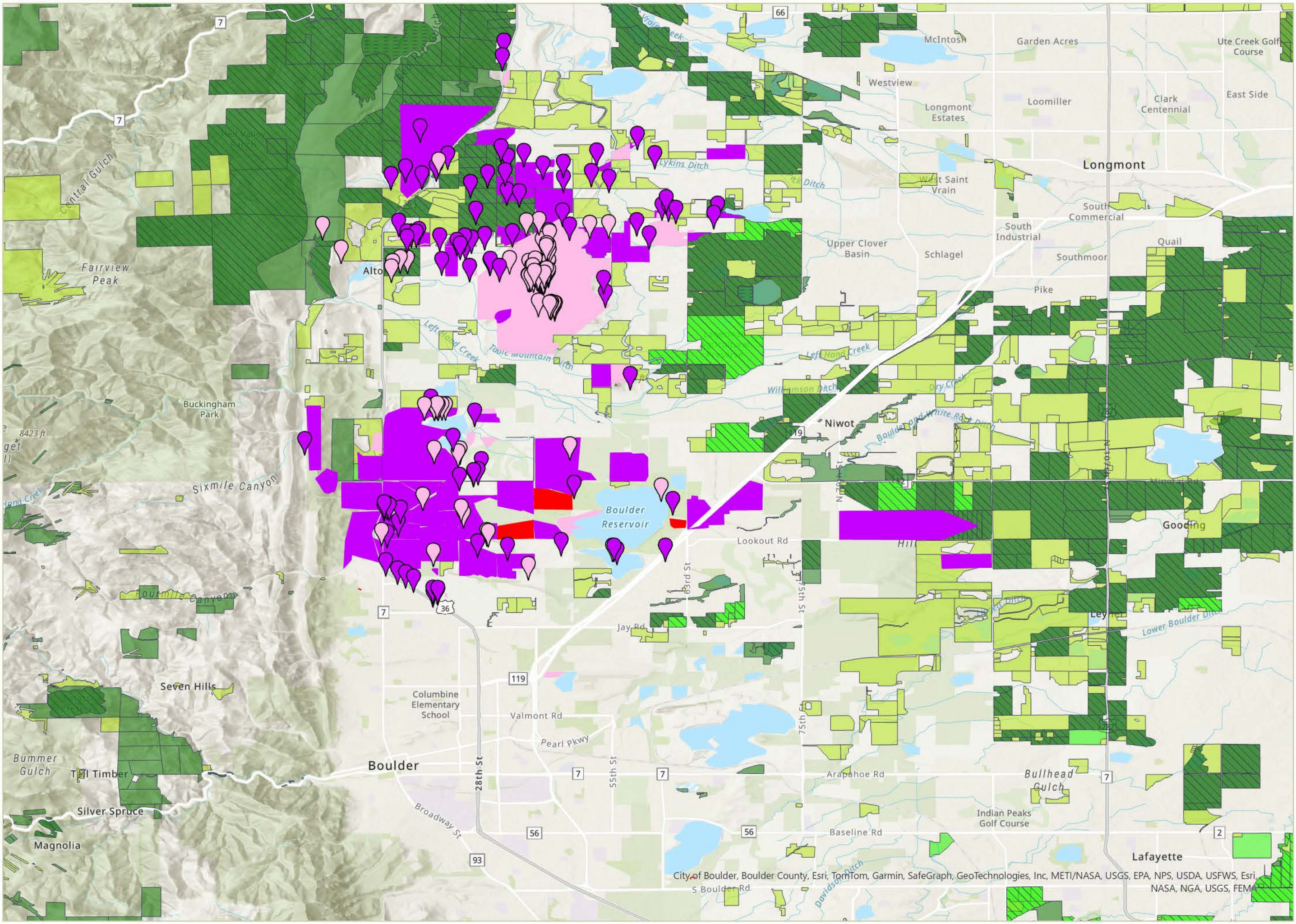
- County Open Space
- County Conservation Easement
- Joint County/City Open Space

This map was compiled using the current (01/01/2014 – 04/08/2024) publicly available records provided by multiple sources (citizens, municipalities, NGO, USFS, BCPOS, BCCPP, etc.), on Edmaps. Therefore, we cannot know the true accuracy or status other than what has been reported. Thus, this map may not reflect all infestations county wide.



City of Boulder, Boulder County, Esri, TomTom, Garmin, SafeGraph, GeoTechnology, METI/NASA, USGS, EPA, NPS, USDA, USFWS, Esri, NASA, NGA, USGS, FEMA

The user agrees to all Terms of Use set forth by Boulder County. For Terms of Use, please visit: www.bouldercounty.org/maps/Disclaimer



Legend

Mediterranean sage Status

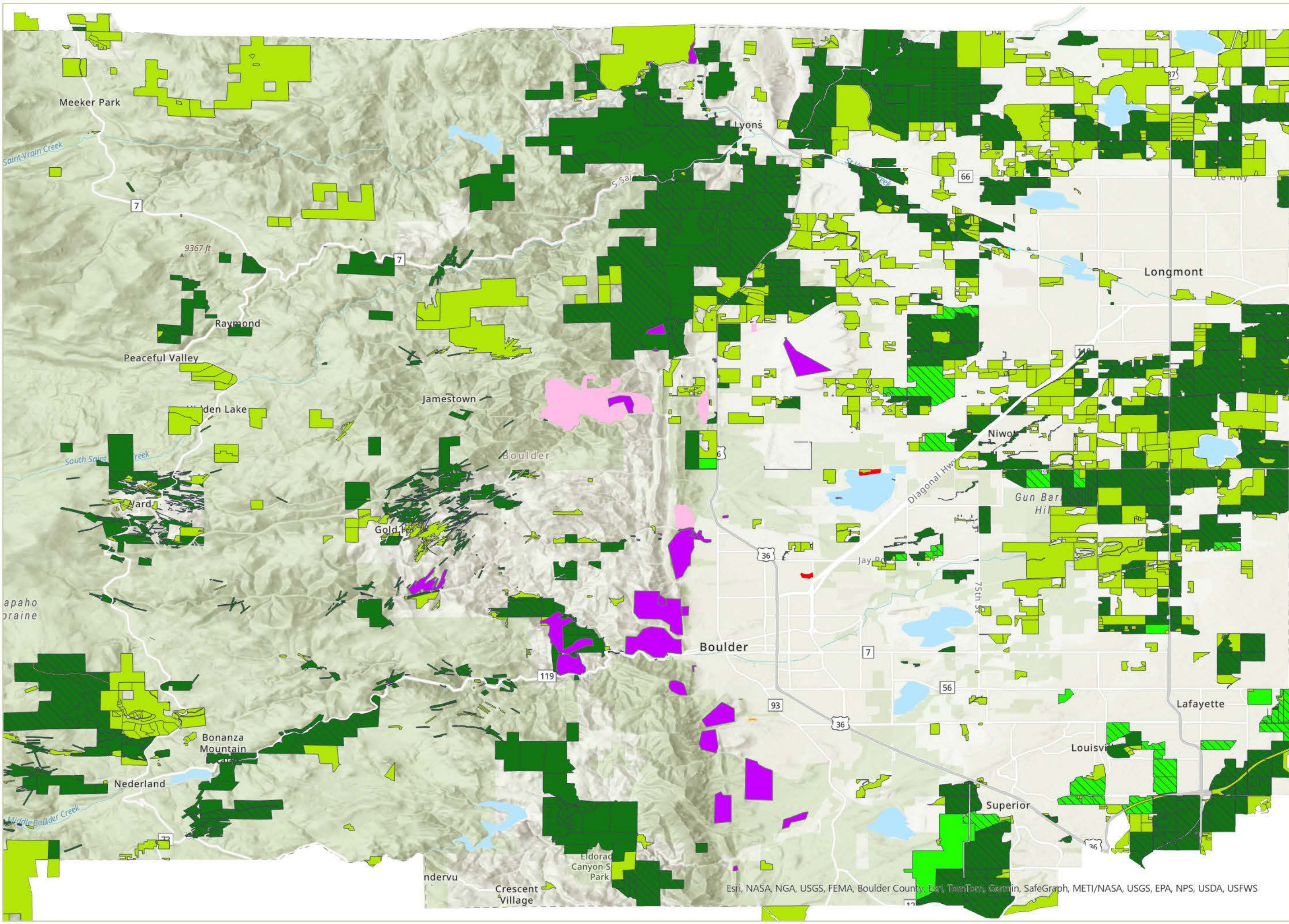
- Eradicated - Species not found after set amount of years determined by Colorado Department Of Agriculture
- Positive - Species found or documented but no treatment conducted
- Treated - Species found and treatment conducted

Boulder County Open Space

- County Open Space
- County Conservation Easement
- Joint County/City Open Space

This map was compiled using the current (01/01/2014 – 04/08/2024) publicly available records provided by multiple sources (citizens, municipalities, NGO, USFS, BCPOS, BCCPP, etc.), on Edmaps. Therefore, we cannot know the true accuracy or status other than what has been reported. Thus, this map may not reflect all infestations county wide.



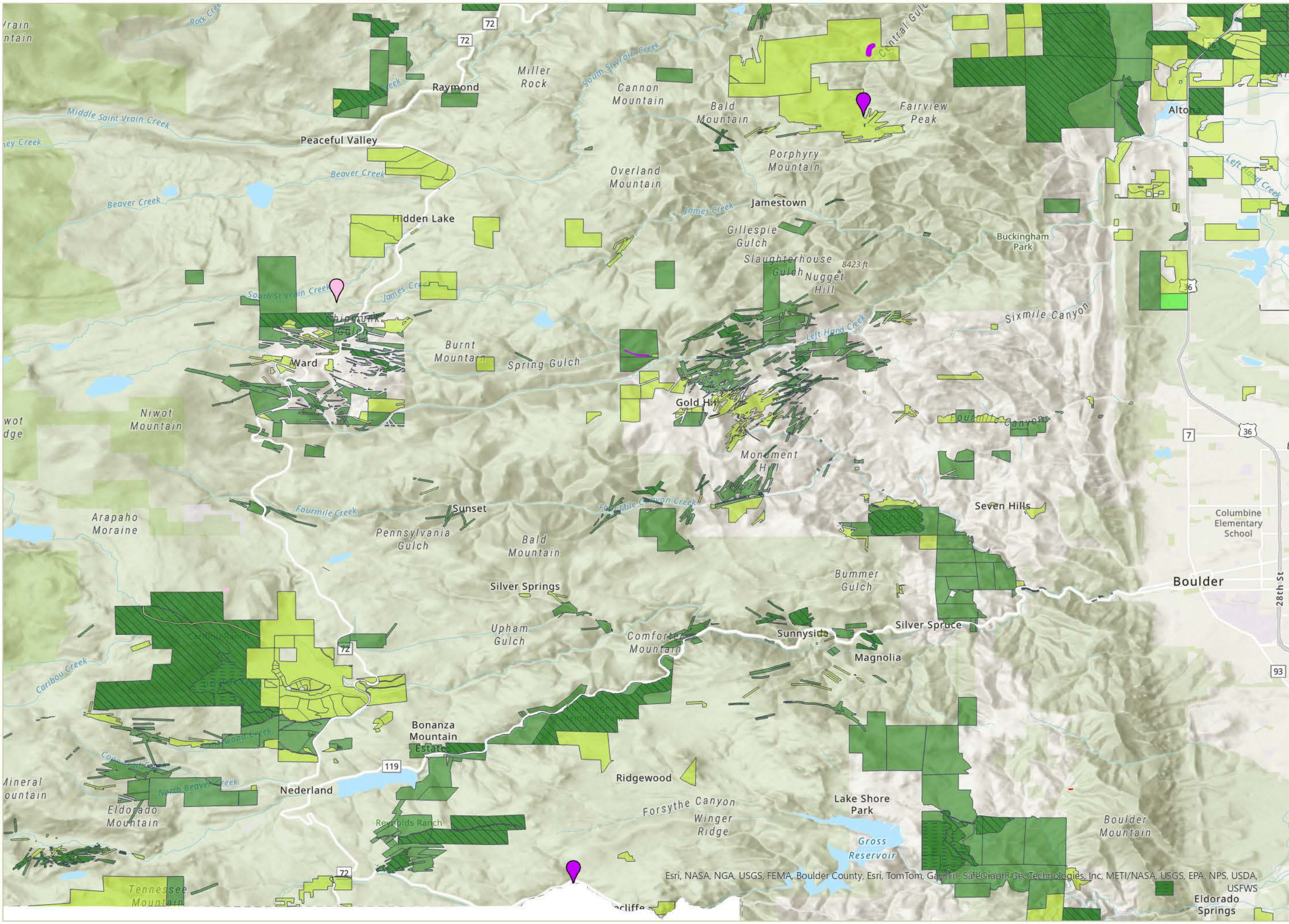


Legend

- Myrtle spurge status**
- Eradicated - Species not found after set amount of years determined by Colorado Department Of Agriculture
 - Negative - Species not found during site visit
 - Positive - Species found or documented but no treatment conducted
 - Treated - Species found and treatment conducted
- Boulder County Open Space**
- County Open Space
 - County Conservation Easement
 - Joint County/City Open Space

This map was compiled using the current (01/01/2014 – 04/08/2024) publicly available records provided by multiple sources (citizens, municipalities, NGO, USFS, BCPOS, BCCPP, etc.), on Edmaps. Therefore, we cannot know the true accuracy or status other than what has been reported. Thus, this map may not reflect all infestations county wide.





Legend

Orange hawkweed Status

- Eradicated - Species not found after set amount of years determined by Colorado Department Of Agriculture
- Positive - Species found or documented but no treatment conducted
- Treated - Species found and treatment conducted

Boulder County Open Space

- County Open Space
- County Conservation Easement
- Joint County/City Open Space

This map was compiled using the current (01/01/2014 – 04/08/2024) publicly available records provided by multiple sources (citizens, municipalities, NGO, USFS, BCPOS, BCCPP, etc.), on Edmaps. Therefore, we cannot know the true accuracy or status other than what has been reported. Thus, this map may not reflect all infestations county wide.



Edmaps Reported
List A Purple loosestrife
Infestations In
Boulder County



Legend

Purple loosestrife Status

- Eradicated
- Negative - Species not found during site visit
- Positive - Species found or documented but no treatment conducted
- Treated - Species found and treatment conducted

Boulder County Open Space

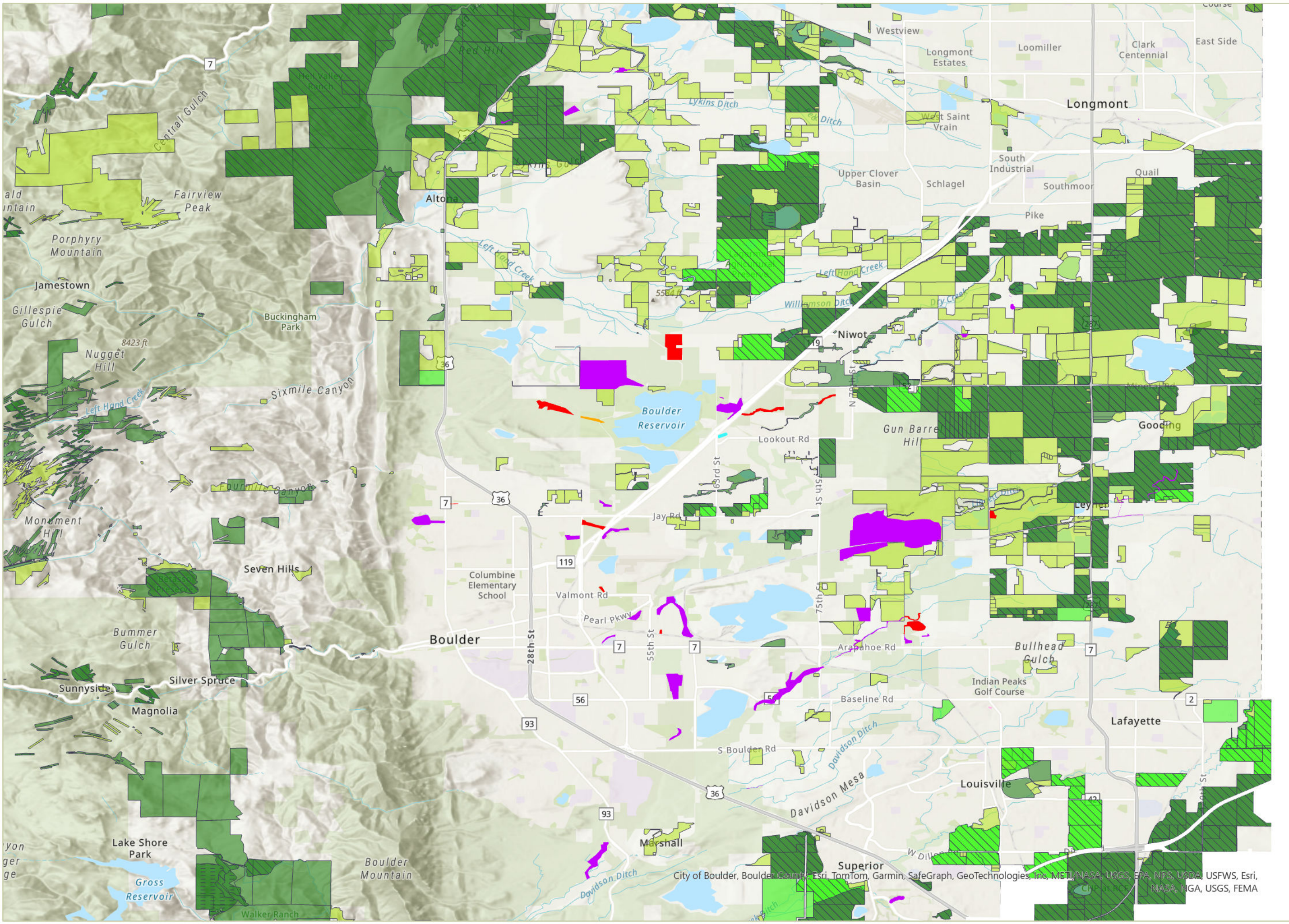
- County Open Space
- County Conservation Easement
- Joint County/City Open Space

This map was compiled using the current (01/01/2014 – 04/08/2024) publicly available records provided by multiple sources (citizens, municipalities, NGO, USFS, BCPOS, BCCPP, etc.), on Edmaps. Therefore, we cannot know the true accuracy or status other than what has been reported. Thus, this map may not reflect all infestations county wide.



The user agrees to all Terms of Use set forth by Boulder County. For Terms of Use, please visit: www.bouldercounty.org/mapdisclaimer




FILE: V:\gis\paw\ed\Staff\Shurben\Treatment_Map\List A Edmaps Edmaps.aprx






City of Boulder, Boulder County, Esri, TomTom, Garmin, SafeGraph, GeoTechnologies, Inc, METI/NASA, USGS, EPA, NPS, USDA, USFWS, Esri, CH2M HILL, NASA, NGA, USGS, FEMA

Legend

Rush skeletonweed Status

-  Negative - Species not found during site visit
-  Positive - Species found or documented but no treatment conducted
-  Treated - Species found and treatment conducted

Boulder County Open Space

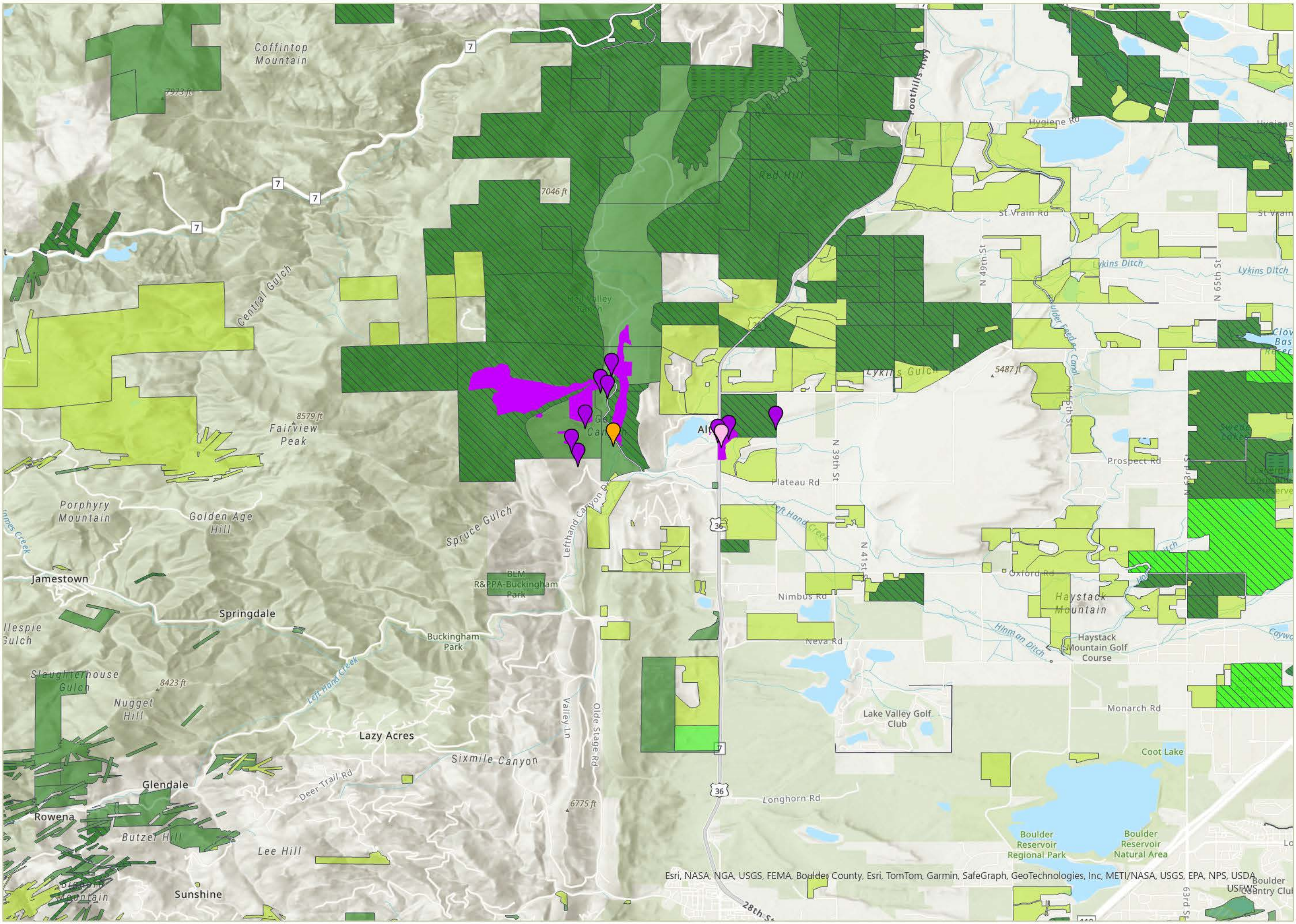
-  County Open Space
-  County Conservation Easement
-  Joint County/City Open Space

This map was compiled using the current (01/01/2014 – 04/08/2024) publicly available records provided by multiple sources (citizens, municipalities, NGO, USFS, BCPOS, BCCPP, etc.), on Edmaps. Therefore, we cannot know the true accuracy or status other than what has been reported. Thus, this map may not reflect all infestations county wide.



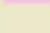
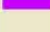
The user agrees to all Terms of Use set forth by Boulder County. For Terms of Use, please visit: www.bouldercounty.org/mapdisclaimer

FILE: V:\gis\openweb\GIS\Boulder\Treatment_Map\List A Edmaps\EdMaps.aprx


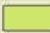
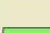


Legend

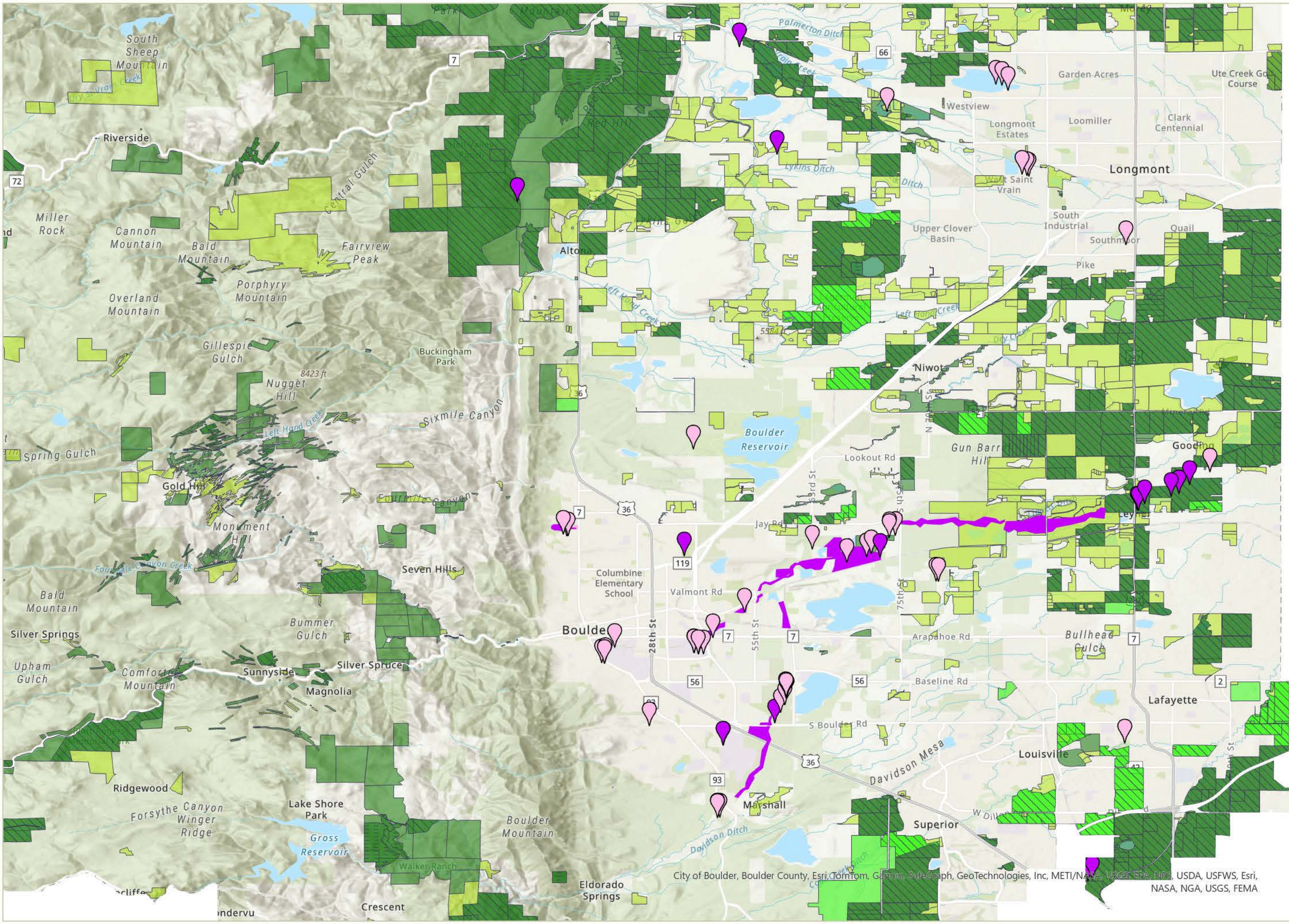
Yellow flag iris Status

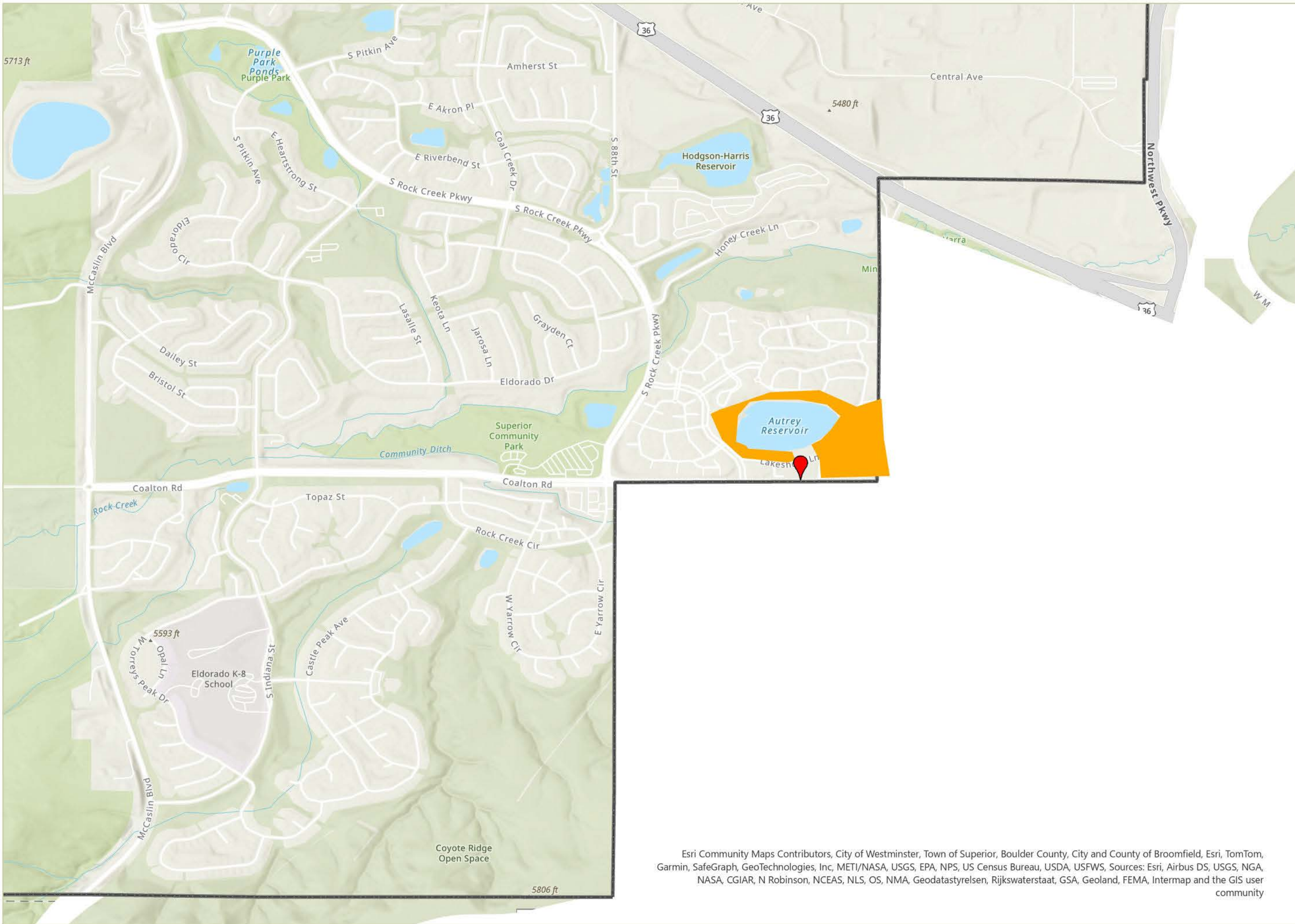
-  Positive - Species found or documented but no treatment conducted
-  Treated - Species found and treatment conducted

Boulder County Open Space

-  County Open Space
-  County Conservation Easement
-  Joint County/City Open Space

This map was compiled using the current (01/01/2014 – 04/08/2024) publicly available records provided by multiple sources (citizens, municipalities, NGO, USFS, BCPOS, BCCPP, etc.), on Edmaps. Therefore, we cannot know the true accuracy or status other than what has been reported. Thus, this map may not reflect all infestations county wide.







Legend

Yellow star thistle

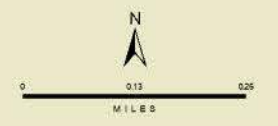
Status

 Eradicated - Species not found after set amount of years determined by Colorado Department of Agriculture

Status

 Negative - Species not found during site visit

This map was produced using historical records.



Esri Community Maps Contributors, City of Westminster, Town of Superior, Boulder County, City and County of Broomfield, Esri, TomTom, Garmin, SafeGraph, GeoTechnologies, Inc, METI/NASA, USGS, EPA, NPS, US Census Bureau, USDA, USFWS, Sources: Esri, Airbus DS, USGS, NGA, NASA, CGIAR, N Robinson, NCEAS, NLS, OS, NMA, Geodatastyrelsen, Rijkswaterstaat, GSA, Geoland, FEMA, Intermap and the GIS user community

The user agrees to all Terms of Use set forth by Boulder County. For Terms of Use, please visit: www.bouldercounty.org/mapdisclaimer

FILE: \\gpc\work\GIS\Boulder\Themes\MapData\GISData\YellowStarThistle\YellowStarThistle.mxd