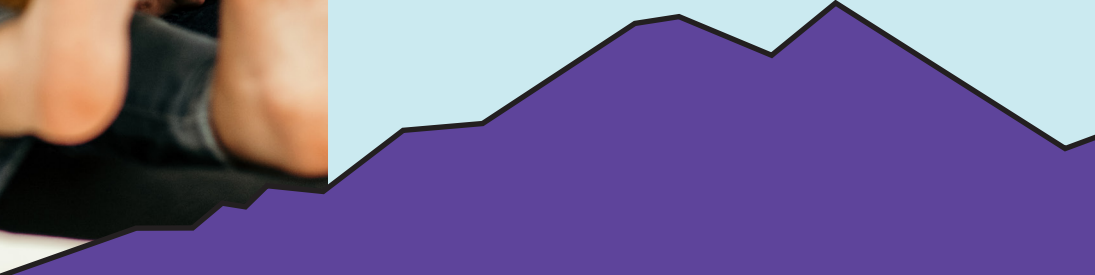




Housing

518 Coffman Street, Longmont, CO
boco.org/SpokeOnCoffman



Welcome to The Spoke on Coffman: Longmont's newest neighborhood of affordable homes. The mixed-use neighborhood consists of 73 1- to 3-bedroom apartment homes, affordable to households with income up to 60% of Area Median Income (AMI). The Spoke on Coffman (The Spoke) is in the heart of downtown Longmont at 518 Coffman Street, near shopping, restaurants and cafés, entertainment, parks, schools, and municipal offices and services including a recreation center, senior center and library. The Spoke also includes a 262-space parking deck with bike and electric vehicle charging for residents and downtown employees, a commercial space with an enterprise café, and office space.

In addition to the neighborhood's onsite amenities, The Spoke on Coffman is conveniently located across the street from the St. Vrain Community Hub, Boulder County's integrated one-stop location for a wide range of services, benefits, and supports, including health coverage, food, financial, and child care assistance, financial coaching, immunizations, employment supports, mental health services, family and children services, and more.

Boulder County Housing Authority residents save hundreds of dollars per month on housing costs with below-market-rate rent, utilities included in the rent, and a low security deposit.

Below-Market-Rate Rent



Rents are below market-rate and include utilities!

Utilities Included In The Rent



Electricity, heating/cooling, water, trash, & recycling are included in rent!

Low Security Deposit



\$500 to \$750 based on number of bedrooms.



All Homes Feature:

- » Paid utilities (including electric, gas, water, and recycling)
- » Low security deposit
- » Natural gas heating and cooling system
- » Programmable thermostat
- » Low/no VOC paint and cabinets
- » Energy Star appliances (including dishwasher, refrigerator, and stove)
- » In-home washer & dryer
- » Ceiling fans
- » Blinds
- » Storage
- » LED lighting
- » No smoking policy

Many Homes Feature:

- » Full ADA accessibility

The Spoke on Coffman Amenities:

- » Elevator
- » Attached parking structure
- » Interior courtyard
- » Workforce enterprise cafe
- » Property management offices
- » Close proximity to transportation hub
- » Within walking distance to restaurants, shopping, and entertainment district

Please note: All renderings and floor plans are an artist's conceptual drawing and will vary from the actual plans and rental homes as built. We reserve the right to make changes to these floor plans, specifications, and elevations without prior notice. Stated dimensions and square footage are approximate and should not be used as a representation of the precise or actual size. Drawings are not to scale.



Amenities for Older Adults

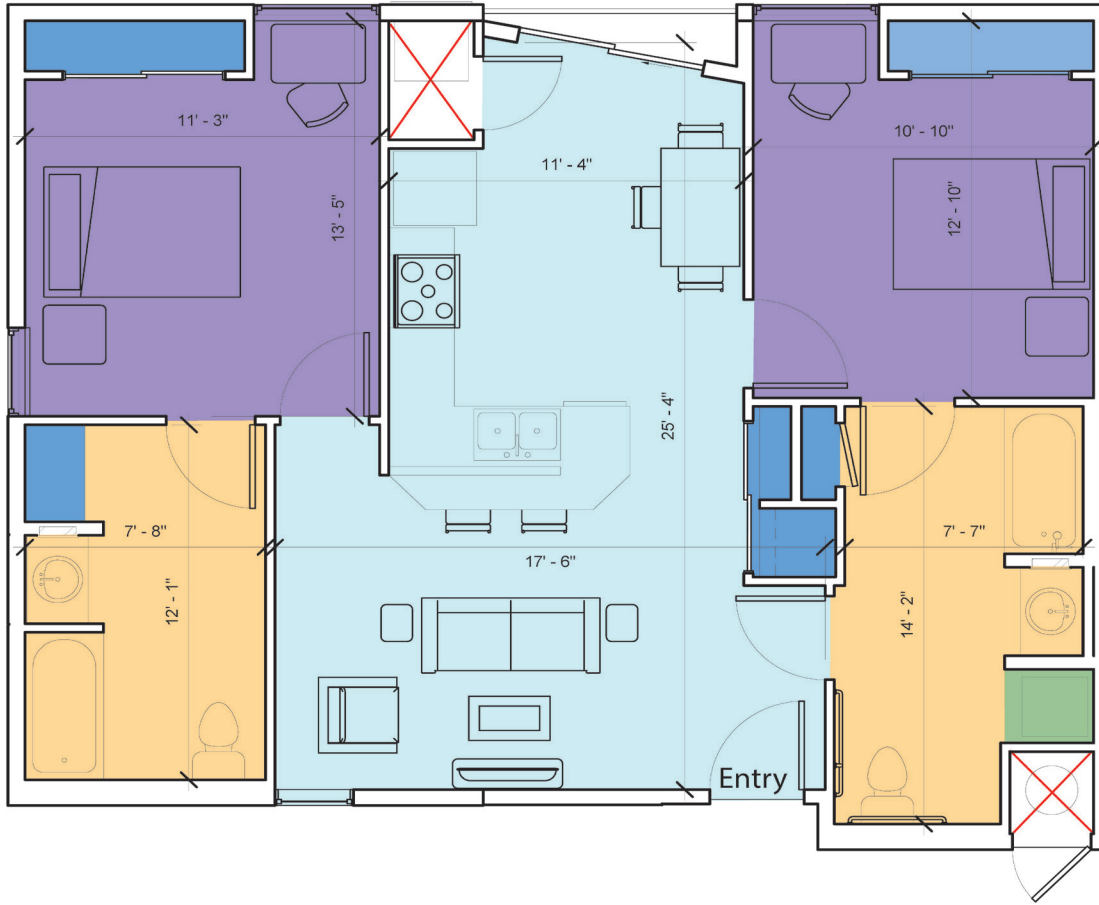
Boulder County Human Services takes pride in our helpful and knowledgeable staff. We have several Older Adult Resource Coordinators who are available to support our older adult residents (age 55 and older) as they age in place.

We can help manage things such as public supports paperwork (food assistance, Old Age Pension, and Health First Colorado, Colorado's Medicaid program). We may also be able to find funding for eyeglasses, minor dental work and medical accessories.

One Bedroom Home | 632-652 Square Feet



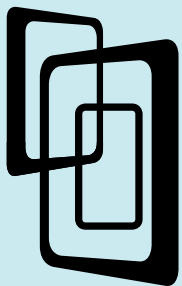
Two Bedroom Home | 943-990 Square Feet



Three Bedroom Home | 1,259 - 1,299 Square Feet



We didn't do it alone. Thank you to our community partners!



BOULDER COUNTY
**HOUSING
AUTHORITY**



Contact us:

boco.org/SpokeOnCoffman
BCHALeasing@BoulderCounty.gov

303-441-3929
(leave us a message)



Boulder County, in accordance with the Fair Housing Act, prohibits discrimination in its programs and activities on the basis of race, color, age, religion, sex, sexual orientation, disability, familial status or national origin. A reasonable accommodation may be requested to ensure equal access by people with disabilities to its programs and activities. To request an accommodation, please call 720-564-2267.