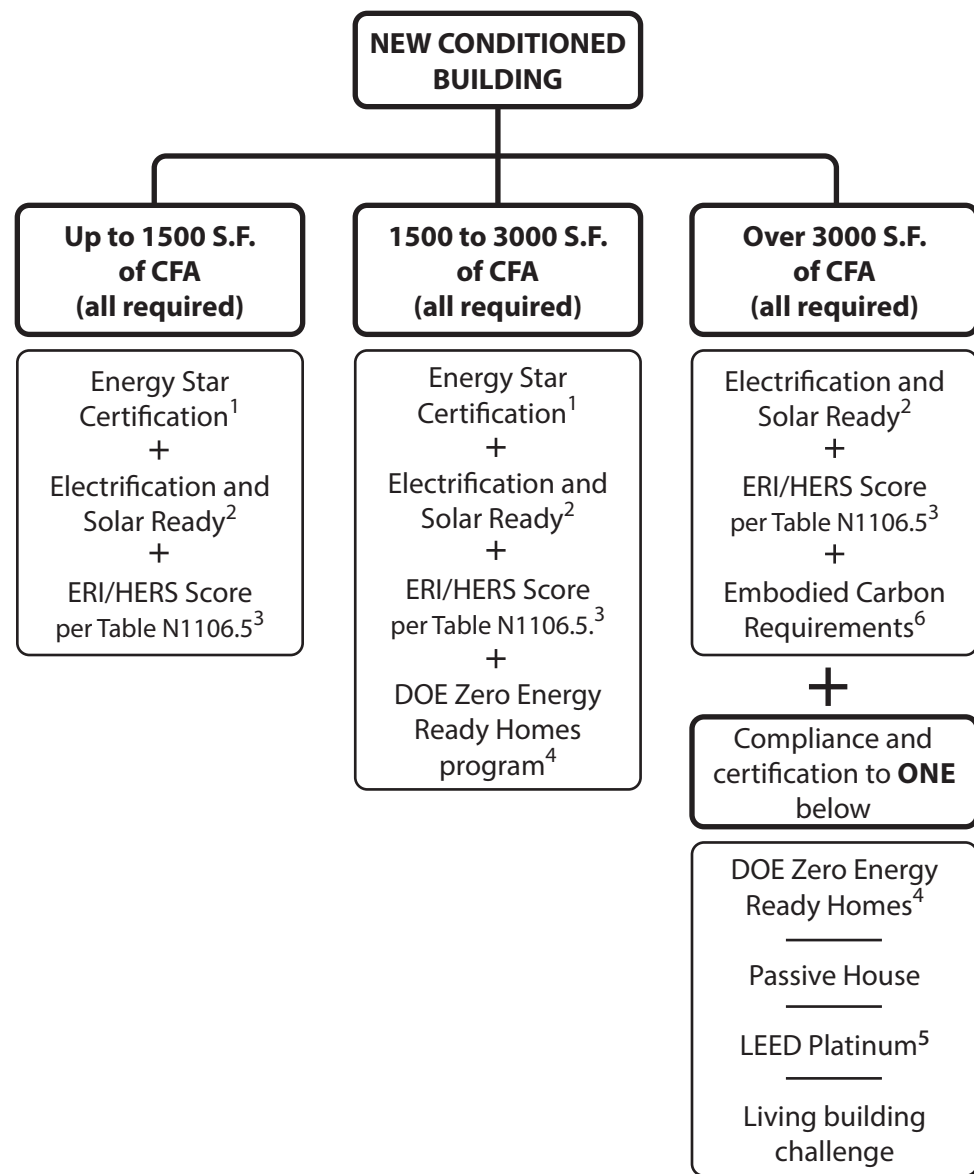




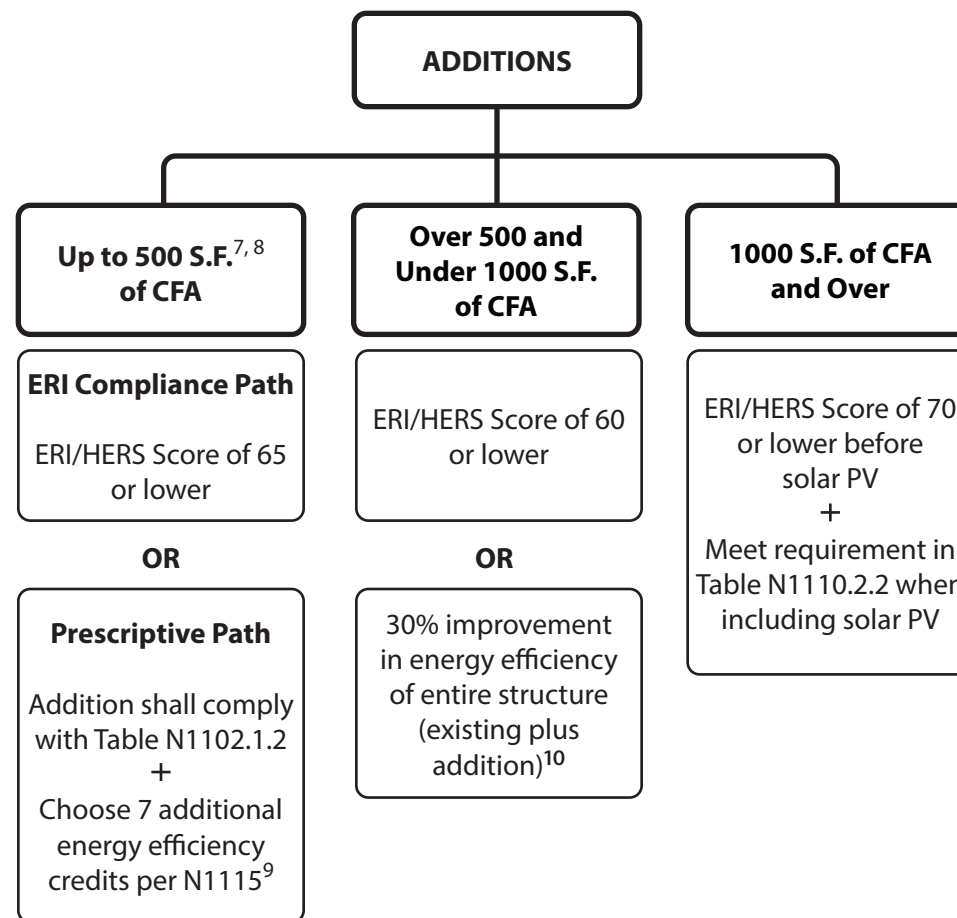
Boulder County BuildSmart Guide

Project Address: _____



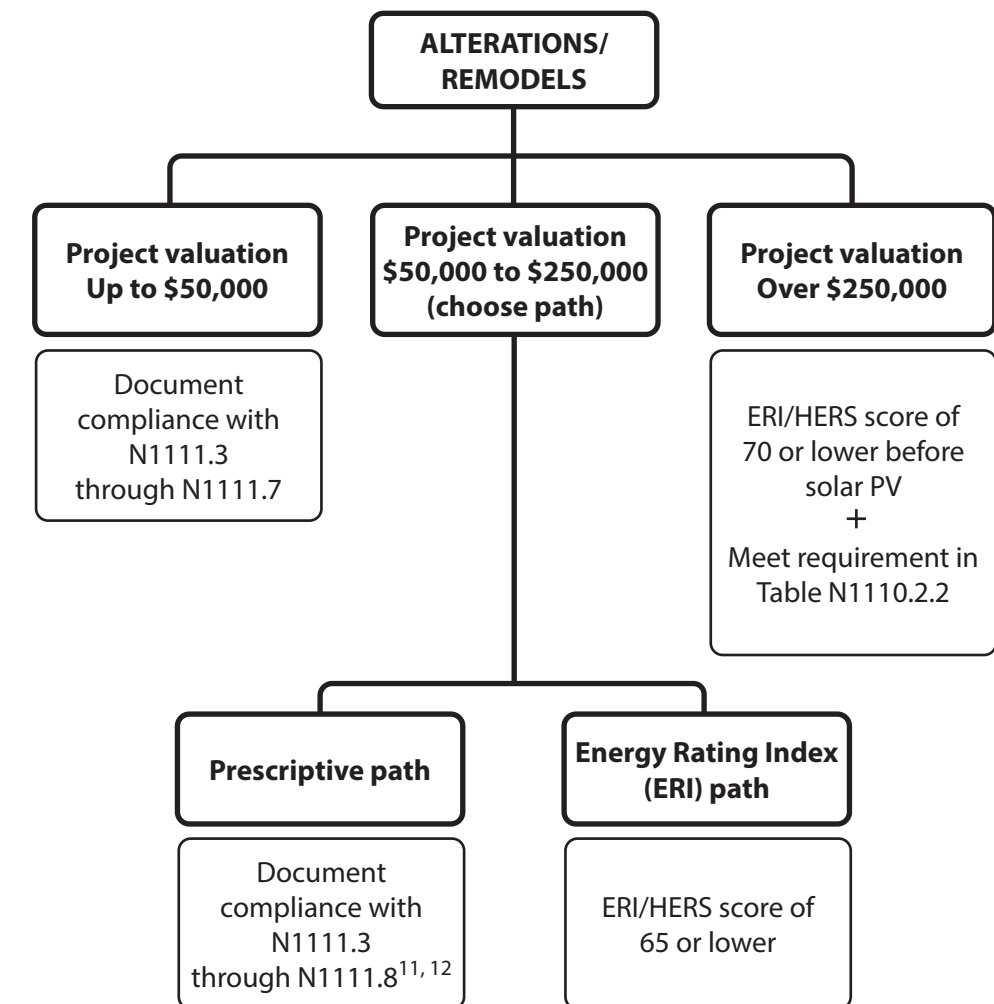
NOTES

1. Most recent version of Energy Star Certified Homes.
2. See the Colorado Model Electric Ready and Solar Ready Code.
3. Provide the full building file and the fuel summary report.
4. Most recent version of the Department of Energy's Zero Energy Ready Homes program.
5. LEED Details:
 - a. Step 1: Submit documentation with the building permit application.
 - b. Step 2: Before scheduling drywall inspection, provide a letter from your LEED for Homes Green Rater with Mid-construction Verification results.
 - c. Step 3: Before Certificate of Occupancy:
 - i. Submit a letter from your LEED for Homes Green Rater with Final Construction Verification results.
 - ii. Provide a signed digital copy of the LEED for Homes Project Checklist (.xls and .pdf formats).
6. Embodied carbon requirements per N1108 will apply starting 3/31/2026.



NOTES

7. Additions of over 200 square feet of floor area resulting in home greater than 2,500 square feet in conditioned floor area shall follow the Energy Rating Index compliance pathway.
8. Conversions of nonconditioned space to conditioned space shall follow the Energy Rating Index compliance pathway.
9. Clearly document additional energy efficiency credit choices on construction documents. See page 2 of this guide for Table N1115.1.
10. 30% improvement in energy efficiency shall be documented with a confirmed ERI/HERS score of the existing home prior to starting work. The existing ERI/HERS score compared to the proposed ERI/HERS shall demonstrate a minimum of a 30% improvement in energy efficiency.



NOTES

11. Alterations valued between \$50,000 and \$100,000 must earn at least 5 additional energy efficiency credits from Table N1115.1. Indicate selections on the construction documents.
12. Alterations valued from \$100,000 to \$250,000 must earn at least 7 additional energy efficiency credits from Table N1115.1. Indicate selections on the construction documents.



Boulder County BuildSmart Guide

Project Address: _____

TABLE N1106.5: MAXIMUM ENERGY RATING (ERI/HERS) INDEX FOR NEW CONDITIONED BUILDINGS^{a, b, c}

Conditioned Floor Area (Square Feet)	ERI/HERS Maximum Value (Without renewable generation)	ERI/HERS Maximum Value (With renewable generation)
≤1500	50	50
1600	50	45
1700	50	40
1800	50	35
1900	50	30
2000	50	25
2100	50	20
2200	50	15
2300	50	10
2400	50	5
≥2500	50	0

- a. Conditioned Floor Area ("CFA") is to be rounded to the nearest 100 square feet.
- b. ERI/HERS Score must be shown with and without the impacts of renewable energy systems.
- c. Homes that are 100% electric (no gas lines installed): HERS/ERI target = 50 without renewables. Homes may install backup systems that only operate during times of electrical grid outages (or for periodic maintenance as recommended by backup system manufacturer) without triggering lower ERI/HERS scores.

TABLE N1110.2.2: ERI SCORE REQUIREMENT FOR ADDITIONS ≥ 1000 S.F.^a

CFA, S.F. ^b	Maximum ERI	CFA, S.F. ^b	Maximum ERI	CFA, S.F. ^b	Maximum ERI
0	68	3400	59	5400	37
1500	68	3500	58	5500	35
1600	68	3600	58	5600	33
1700	67	3700	57	5700	31
1800	67	3800	57	5800	29
1900	66	3900	56	5900	27
2000	66	4000	55	6000	25
2100	65	4100	54	6100	23
2200	65	4200	53	6200	21
2300	64	4300	52	6300	19
2400	64	4400	51	6400	17
2500	63	4500	50	6500	15
2600	63	4600	49	6600	13
2700	62	4700	48	6700	11
2800	62	4800	47	6800	9
2900	61	4900	46	6900	7
3000	61	5000	45	7000	5
3100	60	5100	43	7100	3
3200	60	5200	41	7200	1
3300	59	5300	39	≥7300	0

- a. Alterations shall comply as referenced in N1111.2.
- b. Conditioned Floor Area ("CFA") is to be rounded to the nearest 100 square feet.

TABLE N1115.1: ADDITIONAL ENERGY EFFICIENCY CREDITS^{a, b}

Selection(s)	Additional Energy Efficiency Credit Sections	Credit Values
	N1115.2 Energy audit	1
	N1115.3 Work that exposes thermal envelope cavities	1
	N1115.4 Vented kitchen range hood	2
	N1115.5 Foundation wall insulation	2
	N1115.6 Blower door test / Infiltration measurement	5
	N1115.7 Energy Rating Index	7
	N1115.8 Radon testing	2
	N1115.9 Radon system	2
	N1115.10 Space conditioning replacement HVAC design	5
	N1115.11 Gas space heating replacement	1
	N1115.12 Heat pump space heating replacement	5
	N1115.13 Air conditioner space cooling replacement	2
	N1115.14 Heat pump space cooling replacement	2
	N1115.15 Gas water heating	1
	N1115.16 Heat pump water heating	5
	N1115.17 Induction cooktop and convection oven are installed	2
	N1115.17 Blower door directed air sealing achieves less than 3 ACH50	5
	N1115.18 Whole house controlled mechanical ventilation	5
	N1115.19 Electric vehicle charging station	3
	N1115.20 (Reserved)	-
	N1115.21 Photovoltaic system	5
	N1115.22 Conditioned/non-vented crawl space	5
	N1115.23 Conditioned/non-vented attic space	5
	N1115.24 Home is fully electrified	7
	N1115.25 Less than full window replacement	2
	N1115.26 Full window replacement	7

- a. See Section N1115 for additional information.
- b. Please choose credits based on total credits needed for selected pathway.