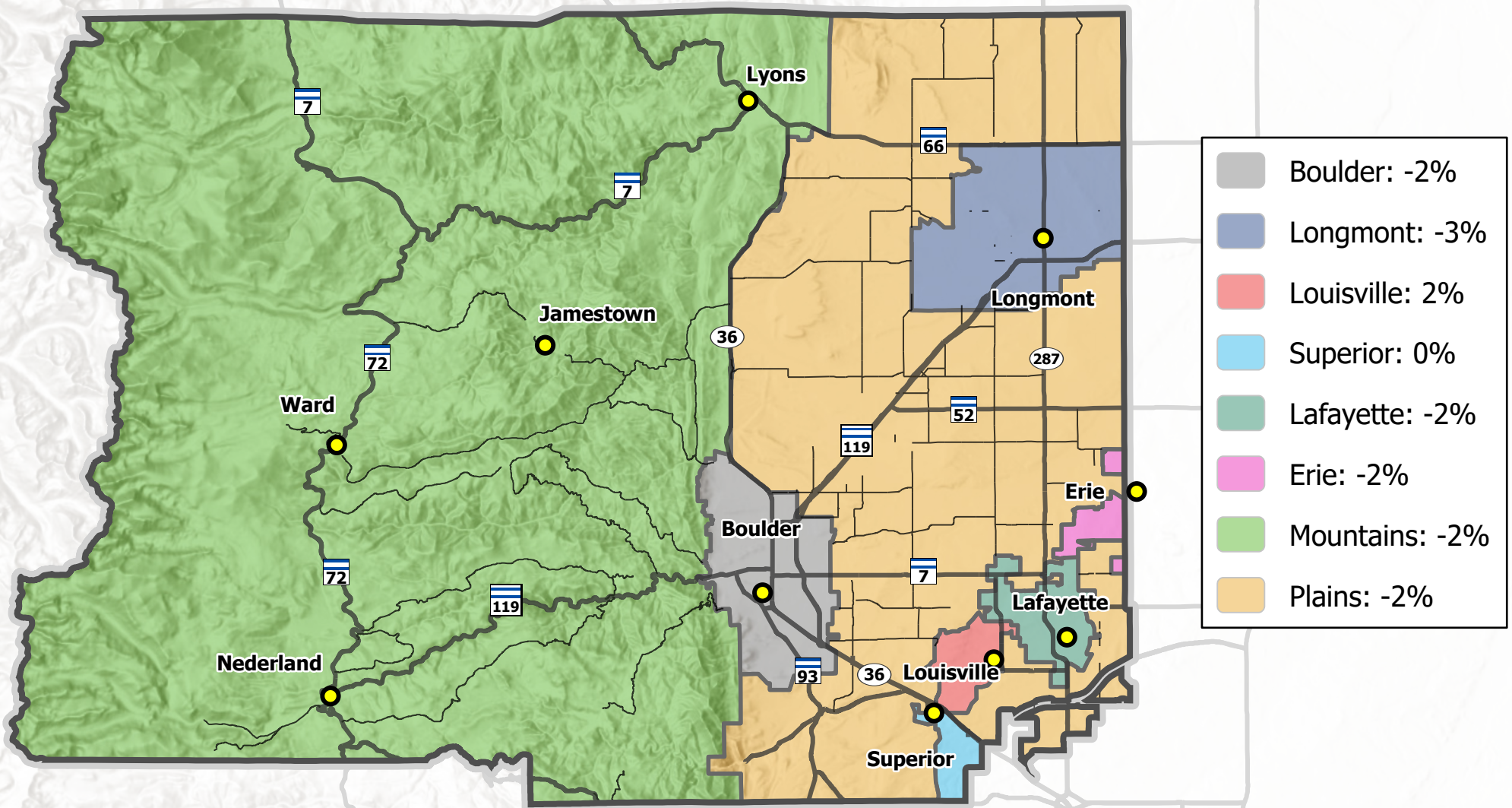


2025 Reappraisal

24-Month Residential Median Value Change



Copyright 2025: Boulder County Assessor's Office
All locations and information contained on this map are approximate. Boulder County makes no warranties regarding the accuracy, completeness, reliability, or suitability of this map. Boulder County disclaims any liability associated with the use or misuse of this map. In accessing and/or relying on this map, the user fully assumes any and all risk associated with the information contained therein. Please contact Boulder County Assessor's Office at 303.441.3520 for inquiries.

Uploaded: 4/30/25

