



Middle Boulder Creek Fuels Reduction Partnership Project



Meeting Purpose

- Introduce the Middle Boulder Creek project and partners to the community
- Share some comments heard to date and further options to engage
- Gather community input to help shape draft treatment plan



Meeting Agenda

- 6:00 – 6:10 Welcome
- 6:10 – 6:45 Project Presentation
- 6:45 – 6:55 Open House Introduction
- 6:55 – 7:30 Open House



Meeting Expectations

- Assume positive intent and shared commitment
- Listen to understand before responding
- Stay focused to use our time well
- Respect differences and seek to understand the reasons behind them
- Facilitator may ask for comments or questions from participants with a range of viewpoints

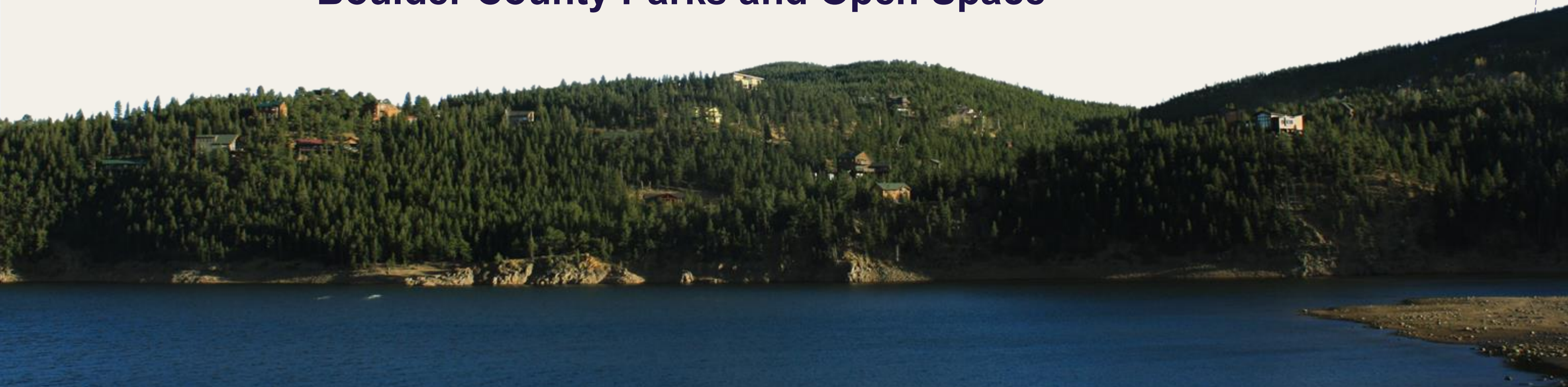
Middle Boulder Creek Project Timeline

- 2024: Nederland/Timberline FPD and Boulder County CWPPs identify area risk
- 2024: COSWAP-LRI Grant Awarded to Boulder County and Partners
- Data Collection/Monitoring: Summer 2024 - ongoing
- **Online Comment Solicitation: Spring 2024 - July 31**
- **First Public Meeting: May 17**
- **Second Public Meeting: June 12**
- Scope of Work Development: July-August
- **Third Public Meeting: July 31**
- Project Layout and Marking: August - Fall 2025
- RFP/Contractor Selection: Fall 2025
- Operations: Winter 2025/2026
- Project Close-Out: Early 2026
- Post Project Monitoring: 2026-2031



Project Details

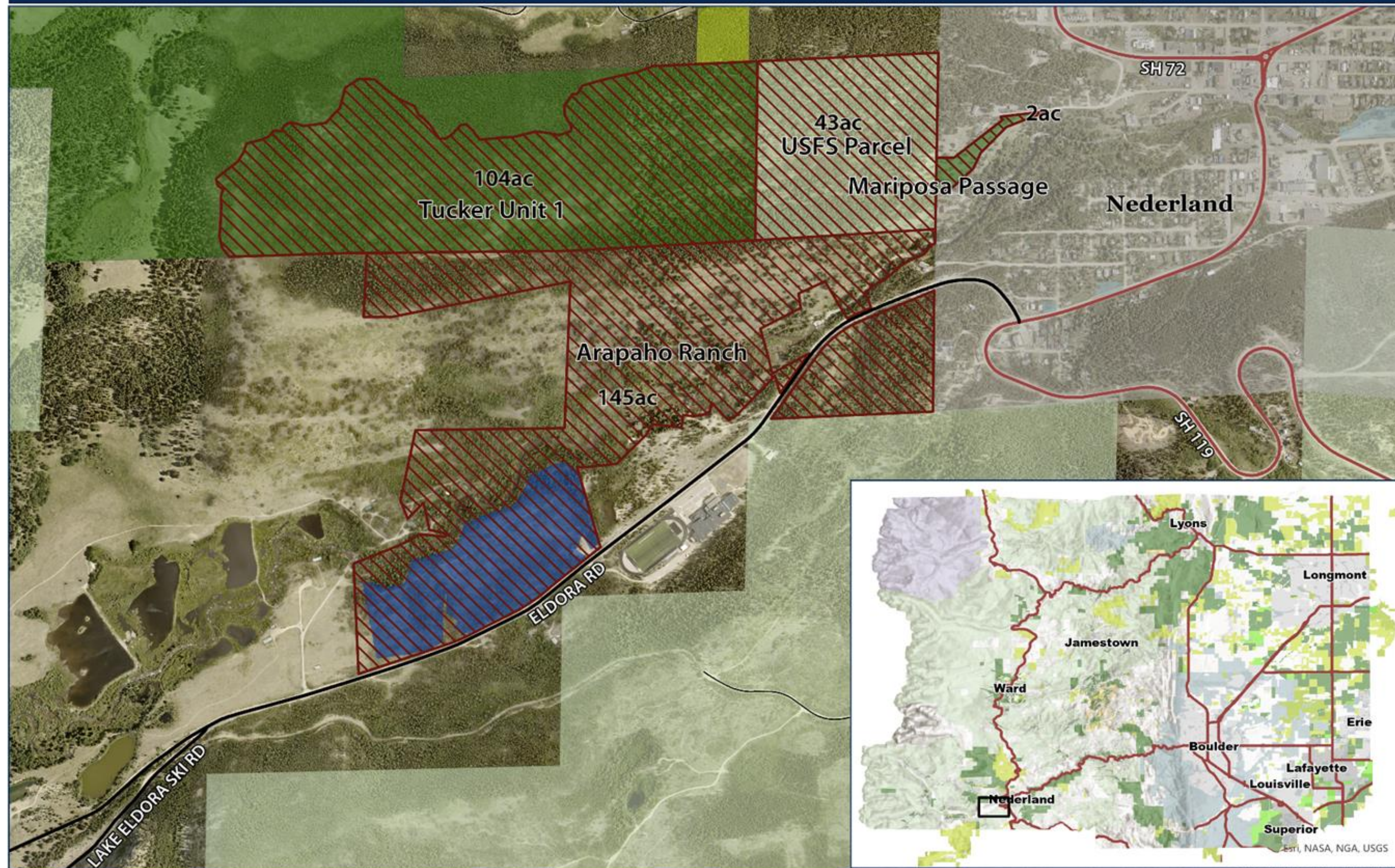
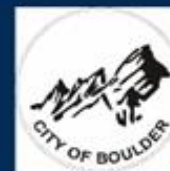
Scott Golden, Jessica Hawkins, Michael Agena
Boulder County Parks and Open Space



Middle Boulder Creek Fuels Reduction Partnership Project

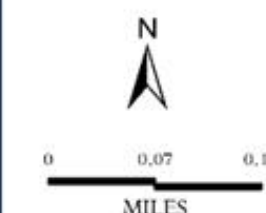
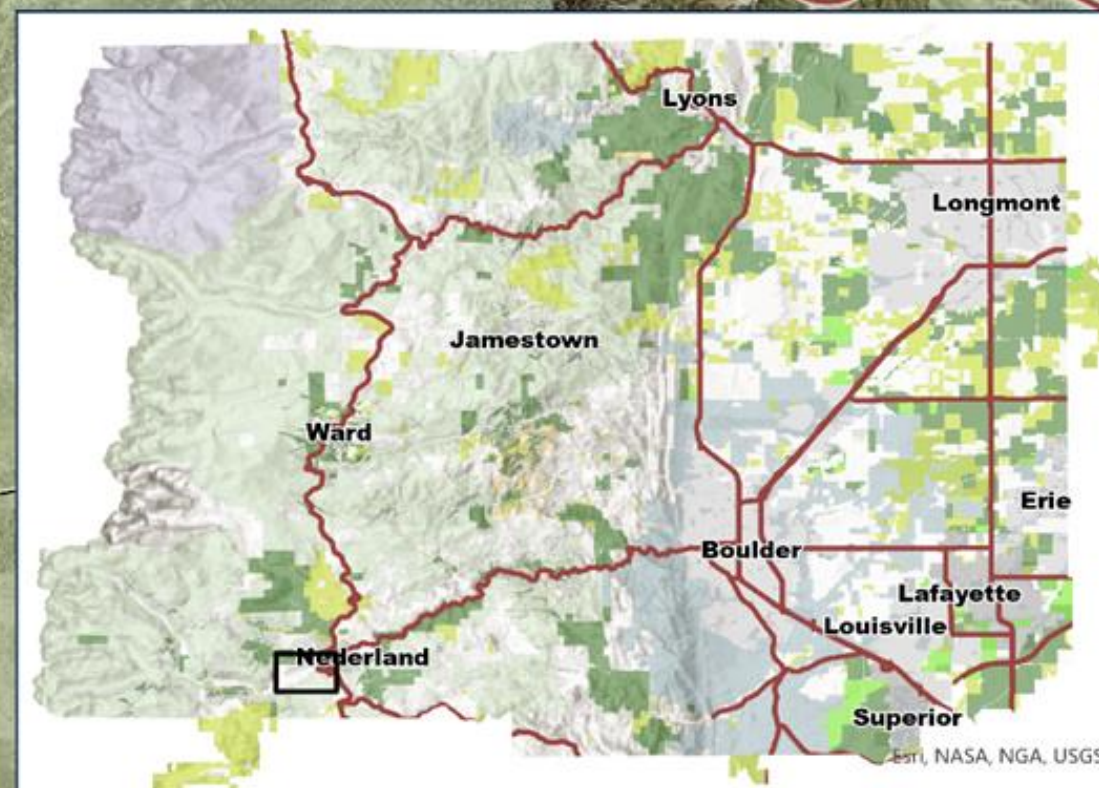


COLORADO
Strategic Wildfire
Action Program
Department of Natural Resources



April 2025

- Fuels Reduction Project Areas
- Previous Forestry Treatments
- County Open Space
- County Conservation Easement
- Municipal Protected Public Lands
- Forest Service
- Nederland

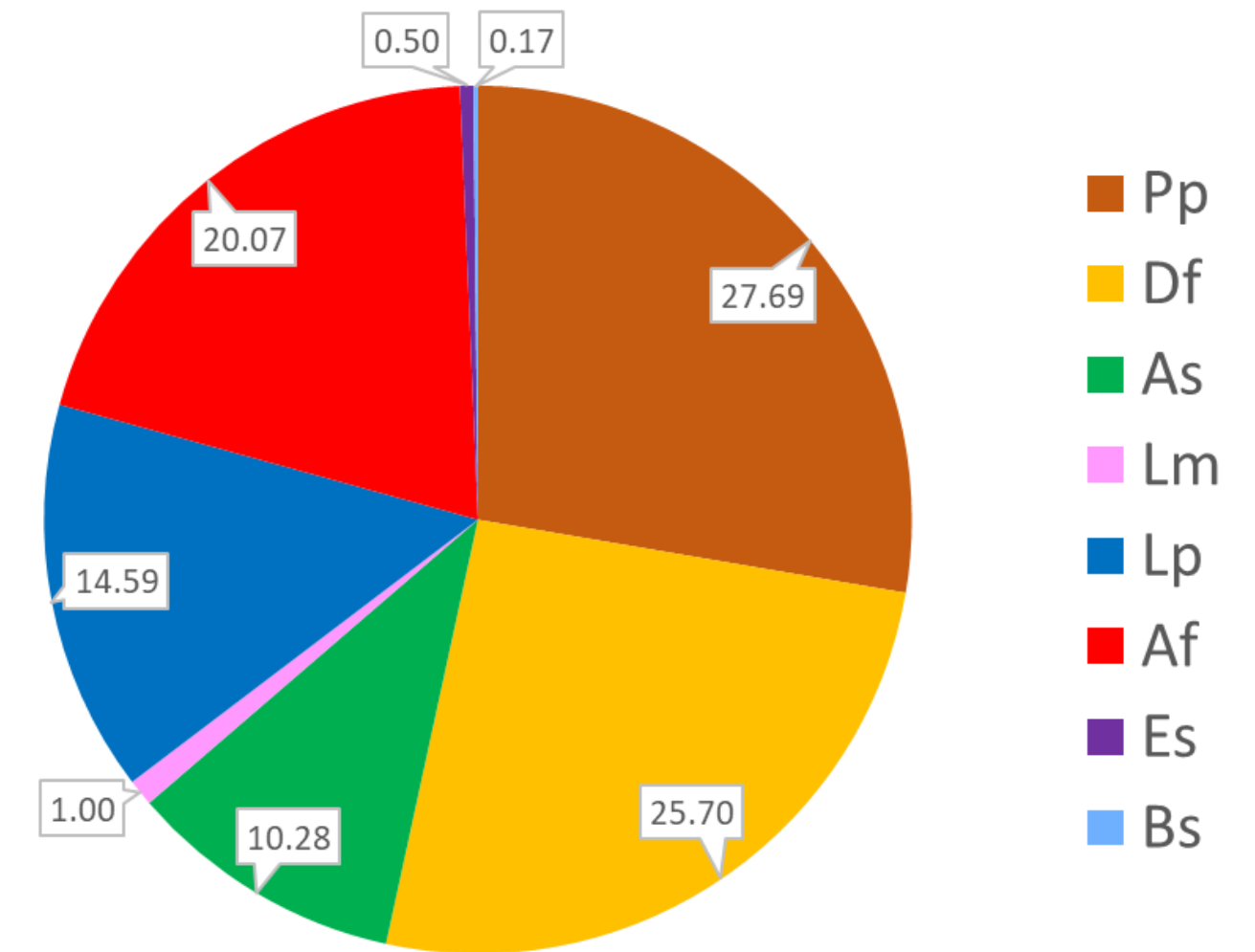


The user agrees to all Terms of Use and Liability by Boulder County.
For Terms of Use, please visit:
www.bouldercounty.org/magis/arcgis
View the Map Accessibility Statement at:
<http://www.bouldercounty.gov/magis/arcgis>

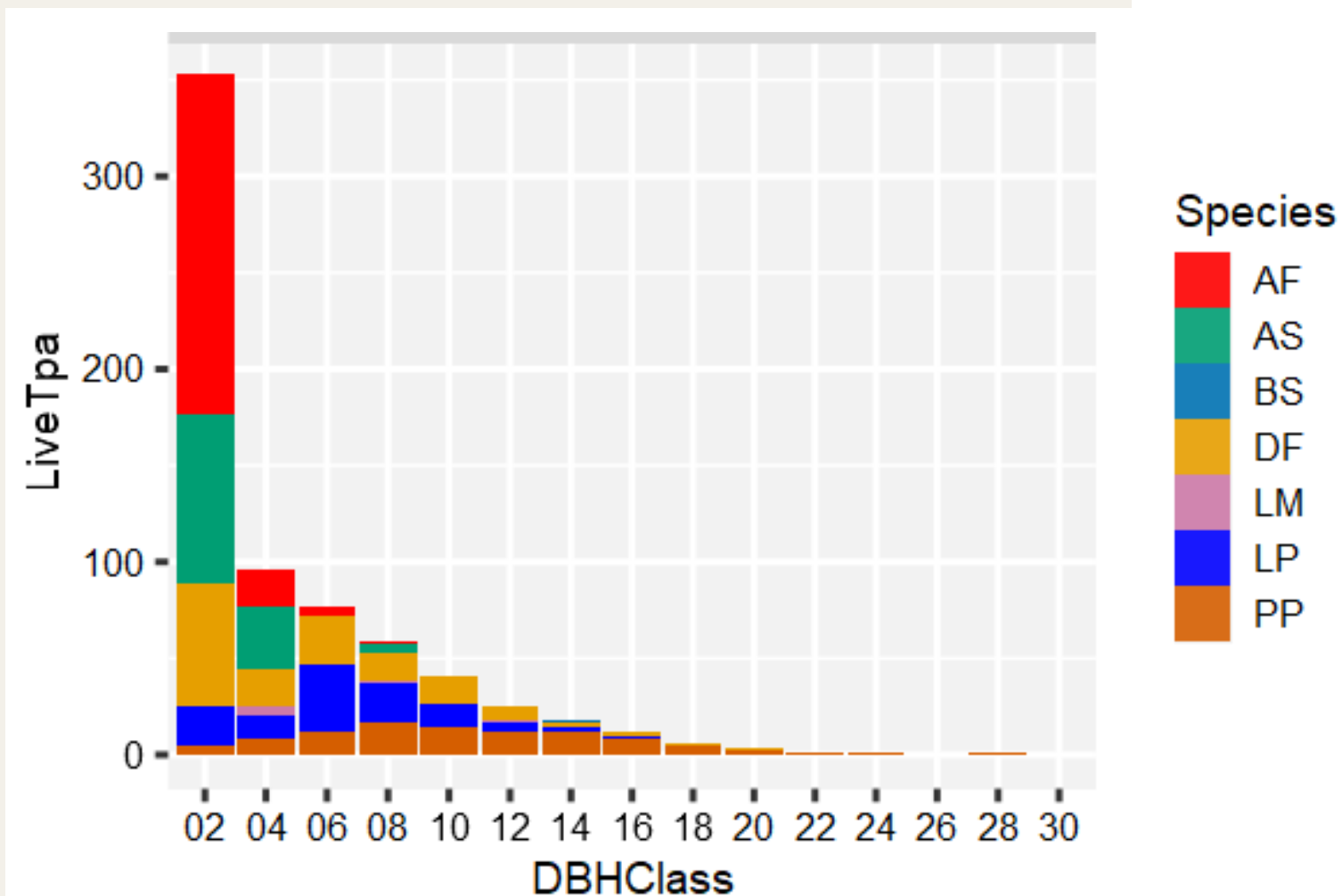
Species Distribution

- Ponderosa Pine: 28%
- Douglas-fir: 26%
- Subalpine Fir: 20%
- Lodgepole Pine: 15%
- Aspen: 10%
- Limber Pine: 1%
- Engelmann Spruce: 0.5%
- Blue Spruce: 0.2%

Tucker-Elk Draw Species Distribution



Diameter Distribution



Forest Cover Types

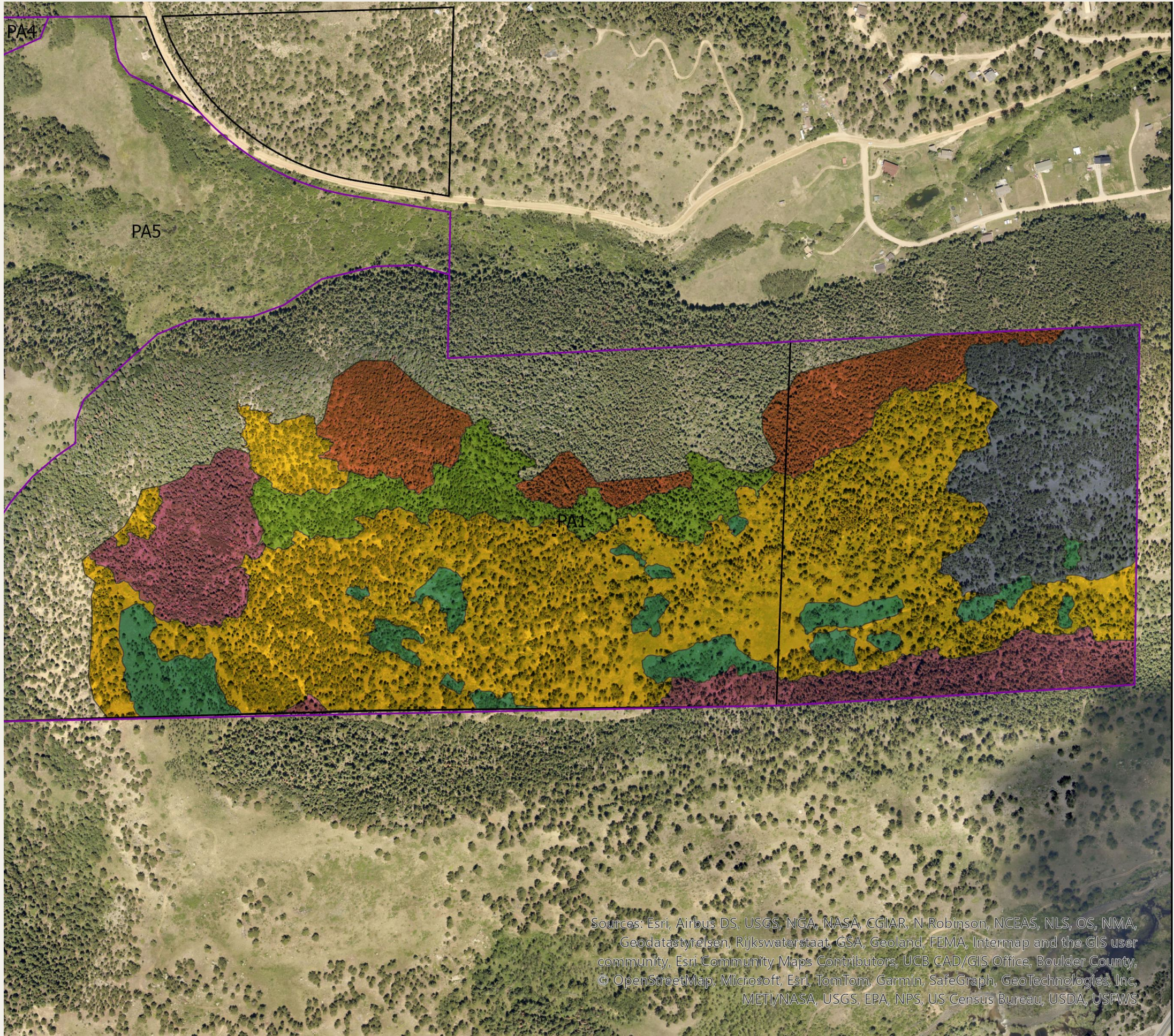
Poderosa/Douglas-fir
Dominated: 52 ac

Lodgepole Dominated: 14 ac

Mesic Fir Dominated: 12 ac

Aspen: 8 ac

Denser Mixed-Conifer: 19 ac



Sources: Esri, Airbus DS, USGS, NGA, NASA, CGIAR, N. Robinson, NCEAS, NLS, OS, NMA, Geodatastyrelsen, Rijkswaterstaat, GSA, Geoland, FEMA, Intermap and the GIS user community, Esri Community Maps Contributors, UCB CAD/GIS Office, Boulder County, © OpenStreetMap, Microsoft, Esri, TomTom, Garmin, SafeGraph, GeoTechnologies, Inc, METI/NASA, USGS, EPA, NPS, US Census Bureau, USDA, USAWS

TED Stands

Parks & Open Space

2024

Legend

Stand

Aspen

Denser Mixed Con

Lodgepole Dom

Mesic Fir Dom

Mixed Con

PP DF Dom Mixed Con

N

0 250 500

Feet

The user agrees to all Terms of Use set forth by Boulder County
For Terms of Use, please visit: www.bouldercounty.org/maps/claim
FILE: V:\gripa\Forestry\Staff\Jessica\TEDBox\TEDBox.aprx

Plant Ecology

- Vegetation mapping completed in 2022 and 2024
- No species of special concern identified
- Two significant natural communities identified, especially noted Geyer's sedge component
 - Populus tremuloides - Abies lasiocarpa / Juniperus communis
 - Populus tremuloides - Pinus ponderosa
- “These natural vegetation communities represent most of the known forested land managed by BCPOS that have a high sedge understory, making this area unique among BCPOS properties and would stand to benefit from a thinning treatment that would open up the tree canopy layer.”

Cultural Survey

- To be completed this summer by contracted archaeologists

Wildlife Monitoring

Tucker-Elk Draw 104-acre unit is in the 1200-acre Critical Wildlife Habitat #30: Arapahoe Ranch/Tucker Homestead. The designation was established in 1983 and is referenced in the *Environmental Resources Element of the Boulder County Comprehensive Plan*. Wildlife resources identified in support of the designation include the diverse mix of habitats supporting avian and mammal diversity, including movement passage for migrating elk and their use of Tucker and Arapahoe Ranch as seasonal concentration areas.

- Colorado Parks and Wildlife has indicated support for the project, and BCPOS has requested a summary of supporting data when it is processed.
- Songbird surveys are taking place across Elk Draw and east Tucker this summer, to gather data for recommendations.
- Acoustic Wildlife Monitors deployed soon to broaden timing and location of data collection and increase the possibility of detecting missed species.
- Game cameras were deployed in March to confirm the diversity of species, spatial and temporal patterns of use.

Project Operations

- Operational aspect will be a blend of mechanical and manual hand cut/pile
- Winter contract
- ‘Equipment Exclusion Zones’ will be delineated for sensitive sites
- Skid/forwarding trails and landings will be approved and monitored by the BOCO Project Manager

Project Operations cont'd

- Colorado Best Management Practices (BMP) to Protect Water Quality

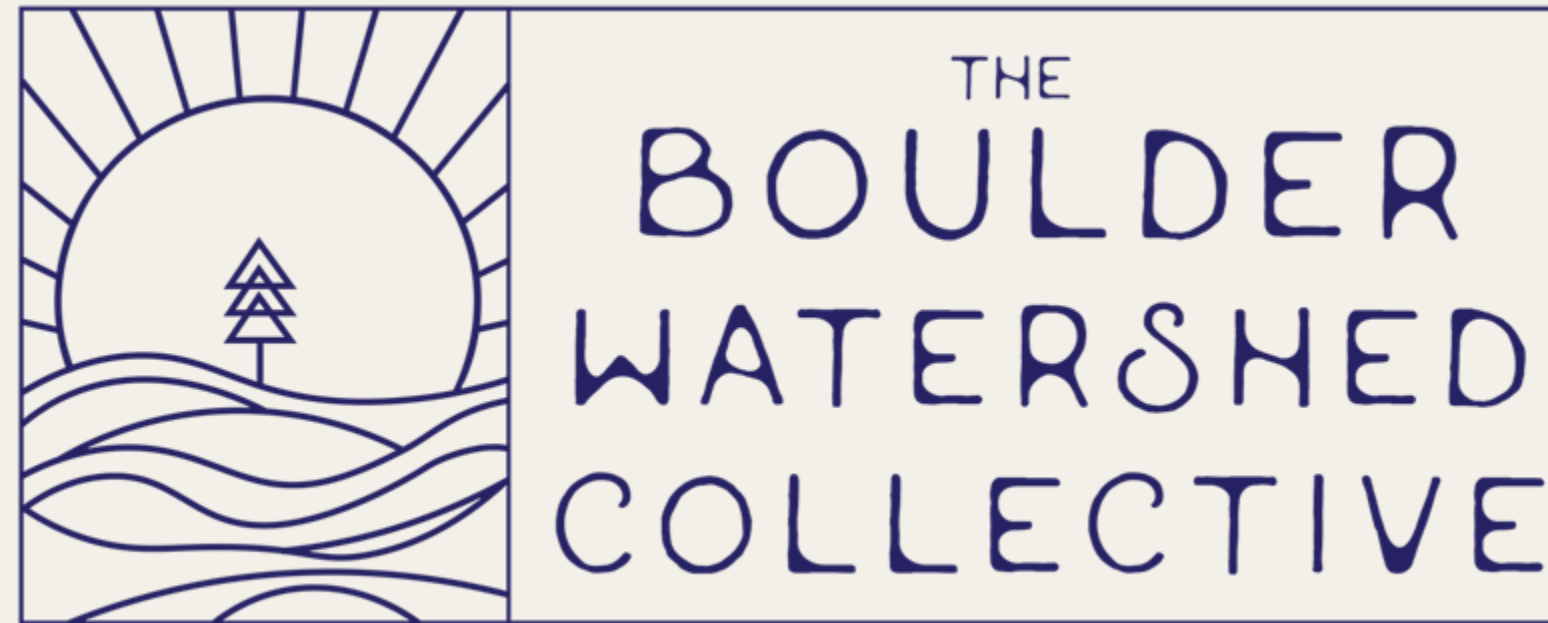
https://csfs.colostate.edu/wp-content/uploads/2024/01/BMP_WaterQuality_2023_Web_CMP.pdf

- Slash disposal – grinding and burn piles
- Logs will remain in possession of BCPOS
- Annual monitoring for at least 5 years
- BOCO Project Manager will be onsite throughout the operational phase



Images courtesy of Ponsse





Our Programs

Water & Forest
Restoration



Community
Engagement



Climate Adaptation
& Resiliency



Social Template



Ecological Template



Collins et al. 2011; Hurst et al. 2017; Brenkert-Smith et al 2020, Carver et al. 2009;



Wetland Restoration for Wildfire Resiliency - using Beavers!

BWC involved in beaver-mimicry projects across Boulder County and in some cases reintroducing beavers into meadows

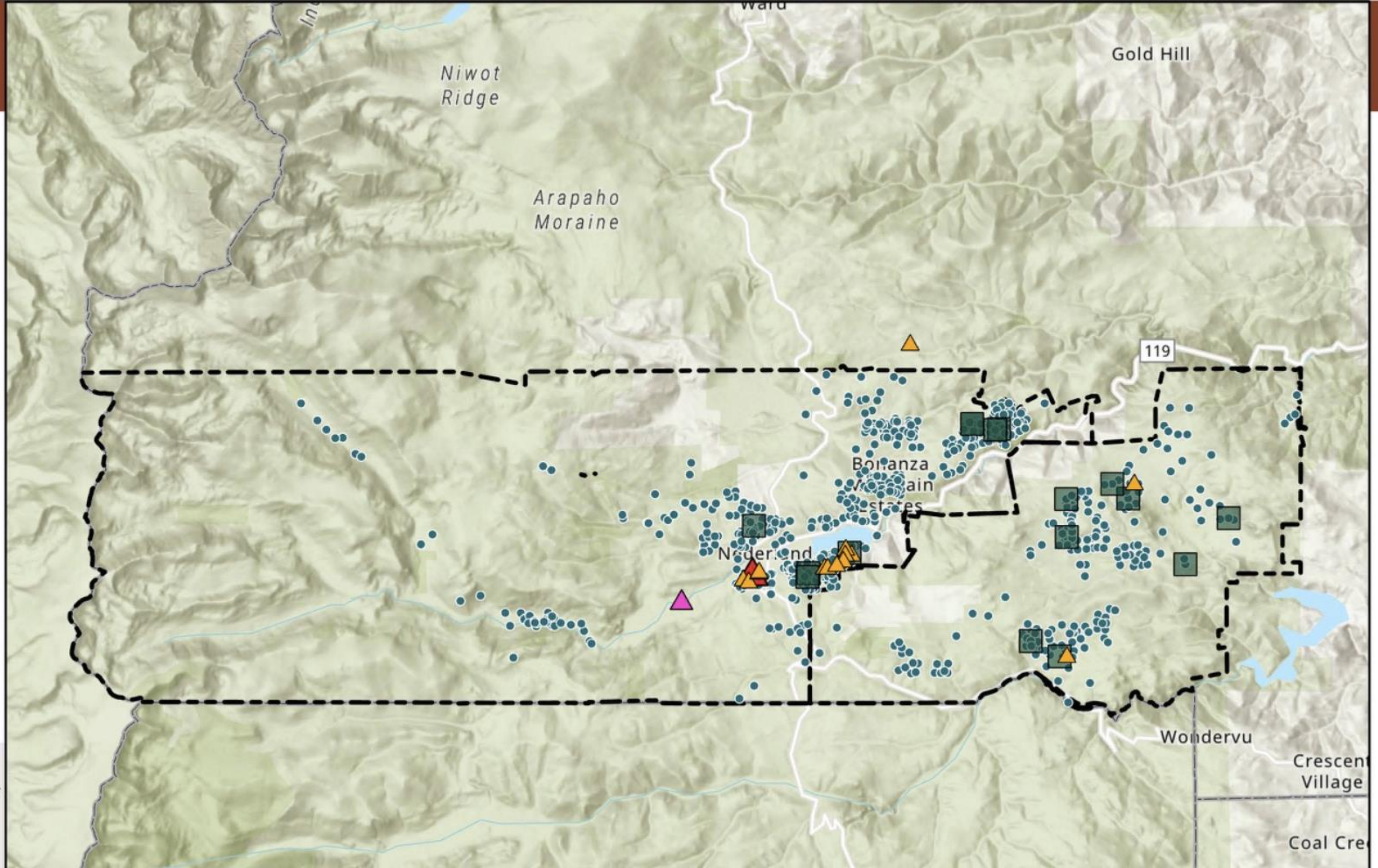


MIDDLE BOULDER CREEK PARTNERSHIP PROJECT



JURISDICTION: NEDERLAND UNINCORPORATED

-  Community Mitigation Planning (1)
-  SFMG (1)
-  Youth Services (14)
-  Community Chipping Event (16)
-  Individual Homeowner Assessment Program (700)
-  Nederland & Timberline FPDs (2)



For further Wildfire Partner information, scan the QR Code or visit www.wildfirepartners.org



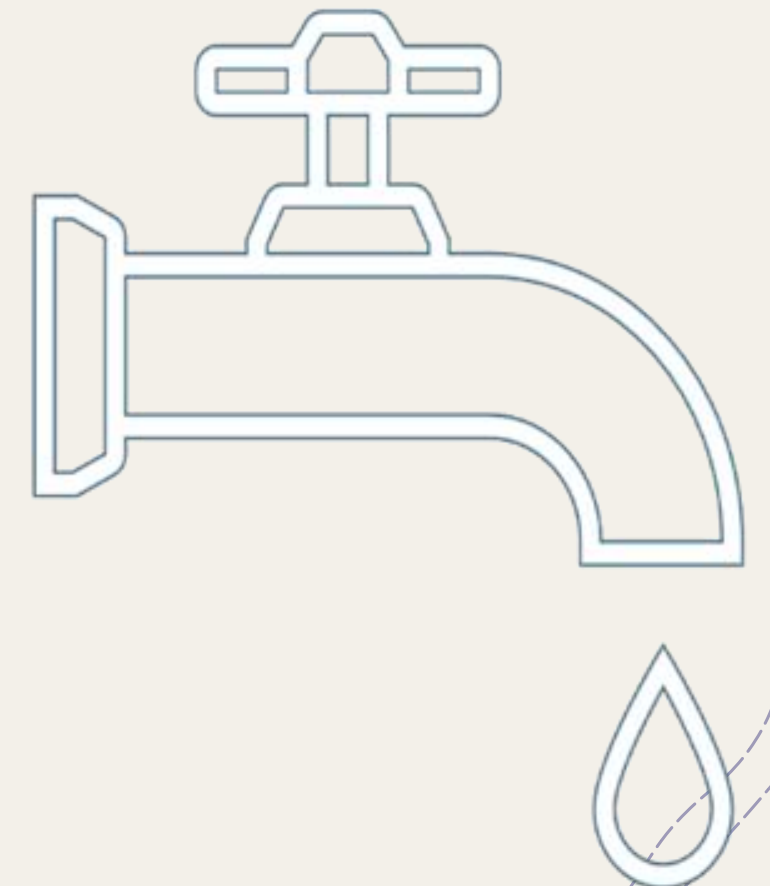
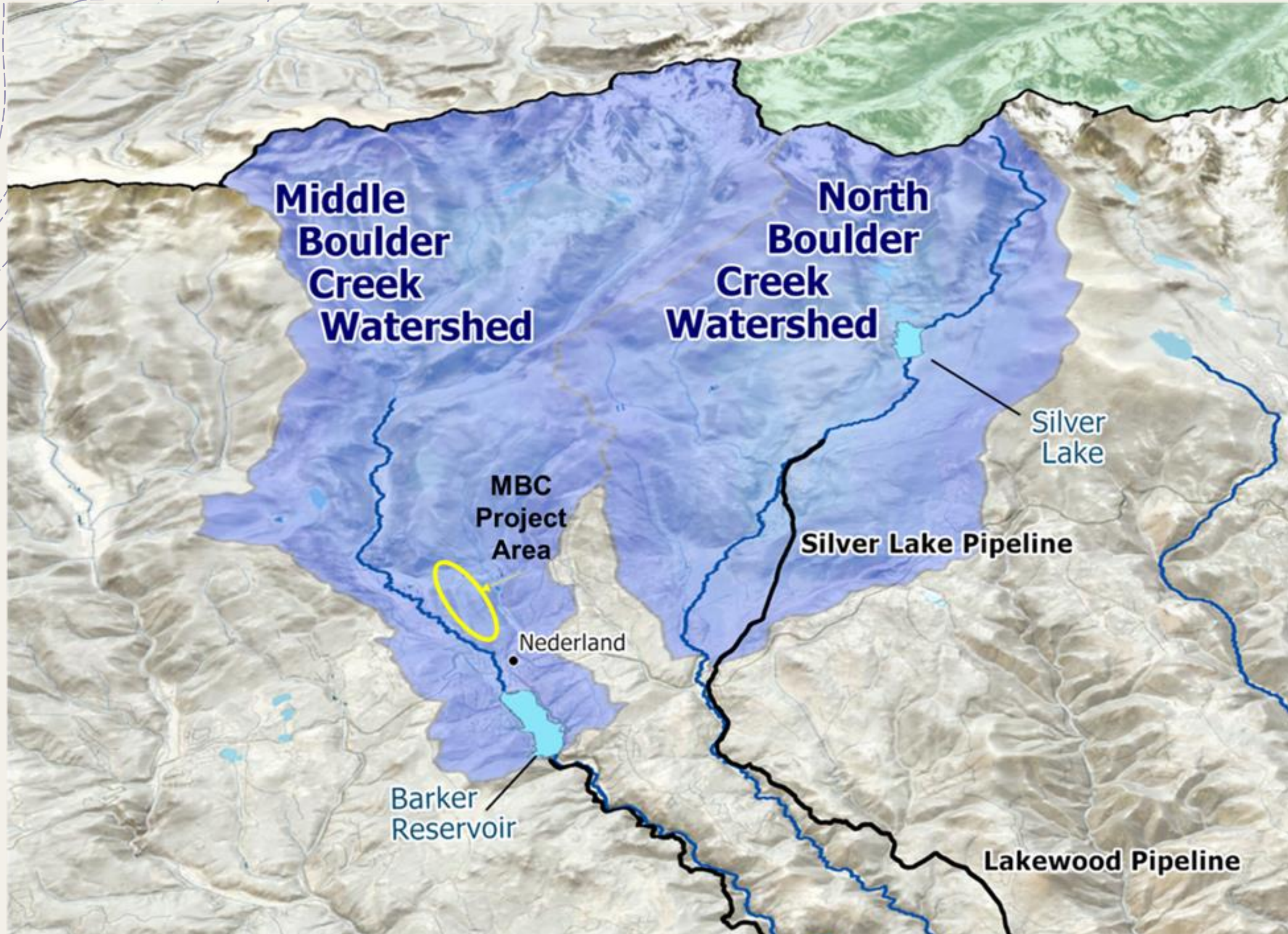
Protecting Water Resources from Wildfire and Post-Fire Impacts

Kate Dunlap

City of Boulder, Drinking Water Quality Manager



Protecting Drinking Water Supplies



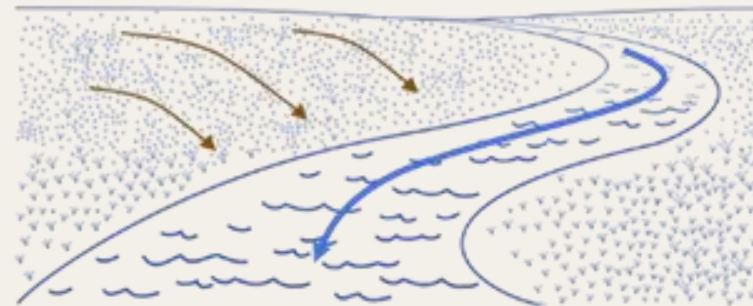
Post-wildfire impacts on water supplies



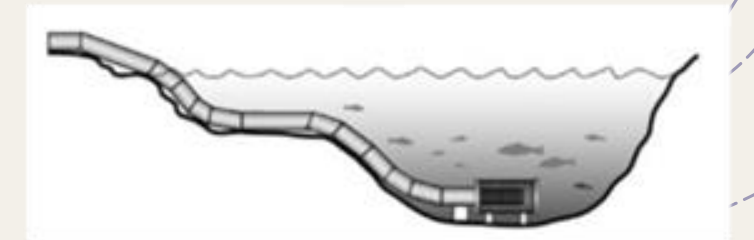
Wildfire



- Reduced vegetation
- Hydrophobic soils



- Increased runoff
- Higher peak flows



- Sediment and debris transport to infrastructure

Short- and long-term impacts from wildfire

Storage Capacity Loss



Debris/sediment-filled Strontia Springs– 1996 Buffalo Creek fire. Source: Kennedy (2013)

Infrastructure Damage



Exposed pipeline after the Colorado Springs 2012 Waldo Canyon wildfire

Water Quality Impacts

Water treatment challenges & increased costs

Poudre River water following a storm within the High Park burn area. Source: Oropeza (2016)



Taste & odor



Algae



Changing Fire Behavior By Reducing Fuels

Increase first responder access



Slow fire spread and allow for aspen regeneration



Bring crown fires to the ground





Nederland Fire Protection District

Charlie Schmidtmann
Fire Chief



Project Timeline

- 2024: Nederland/Timberline FPD and Boulder County CWPPs identify area risk
- 2024: COSWAP-LRI Grant Awarded to Boulder County and Partners
- Data Collection/Monitoring: Summer 2024 - ongoing
- Online Comment Solicitation: Spring 2024 - July 31
- First Public Meeting: May 17
- Second Public Meeting: June 12
- Scope of Work Development: July-August
- Third Public Meeting: July 31
- Project Layout and Marking: August - Fall 2025
- RFP/Contractor Selection: Fall 2025
- Operations: Winter 2025/2026
- Project Close-Out: Early 2026
- Post Project Monitoring: 2026-2031

What we have heard from the community so far...

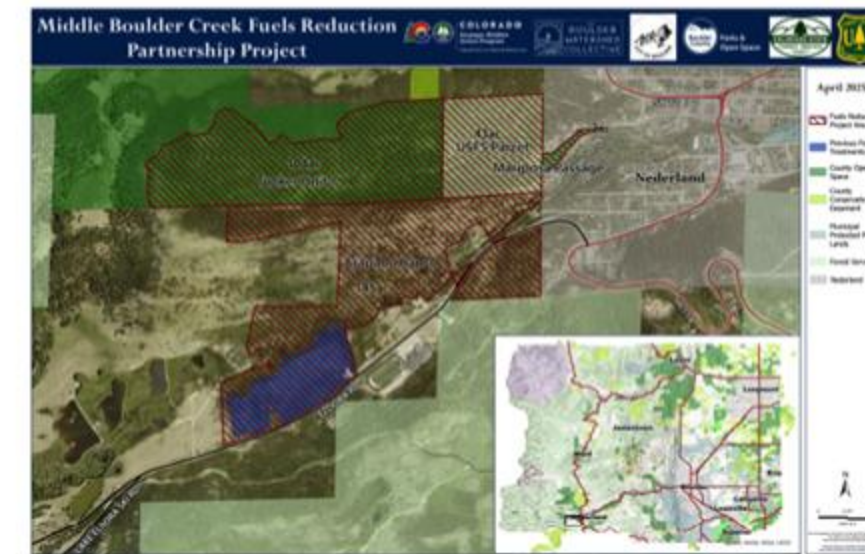
- Recreation
- Wildlife/Habitat
- Prescribed Fire
- Juniper
- Existing and Future Blowdown
- Treatment Effectiveness
- Patch Cuts
- Home Hardening
- Restoration vs Resilience

Middle Boulder Creek Fuel Reduction Partnership Project FAQ

General Project Description

Is this the same project as the "Tucker Property Forestry Management"?

Yes, the Middle Boulder Creek (MBC) Fuels Reduction Partnership Project includes portions of Tucker Ranch, but will also include project areas in Elk Draw, Arapaho Ranch, and potentially parts of US Forest Service (USFS) land adjacent to Tucker Ranch. Both Tucker Ranch and Elk Draw are Boulder County Parks & Open Space (BCPOS) properties. Arapaho Ranch is privately owned land and will be managed through this project in partnership with the Boulder Watershed Collective (BWC). Project organizers are currently pursuing [Good Neighbor Authority \(GNA\)](#) with the USFS to treat portions of USFS land adjacent to the Tucker Ranch property, though that work won't happen this year.



Who is leading the project?

Boulder County is managing the project and providing contractor oversight, while working in partnership with BWC to help manage the project on private lands, and to provide community engagement support. This is a collaborative project, addressing multiple values at risk, that has many partners and stakeholders, including the Nederland Fire Protection District, Colorado State



For More Information

Michael Agena

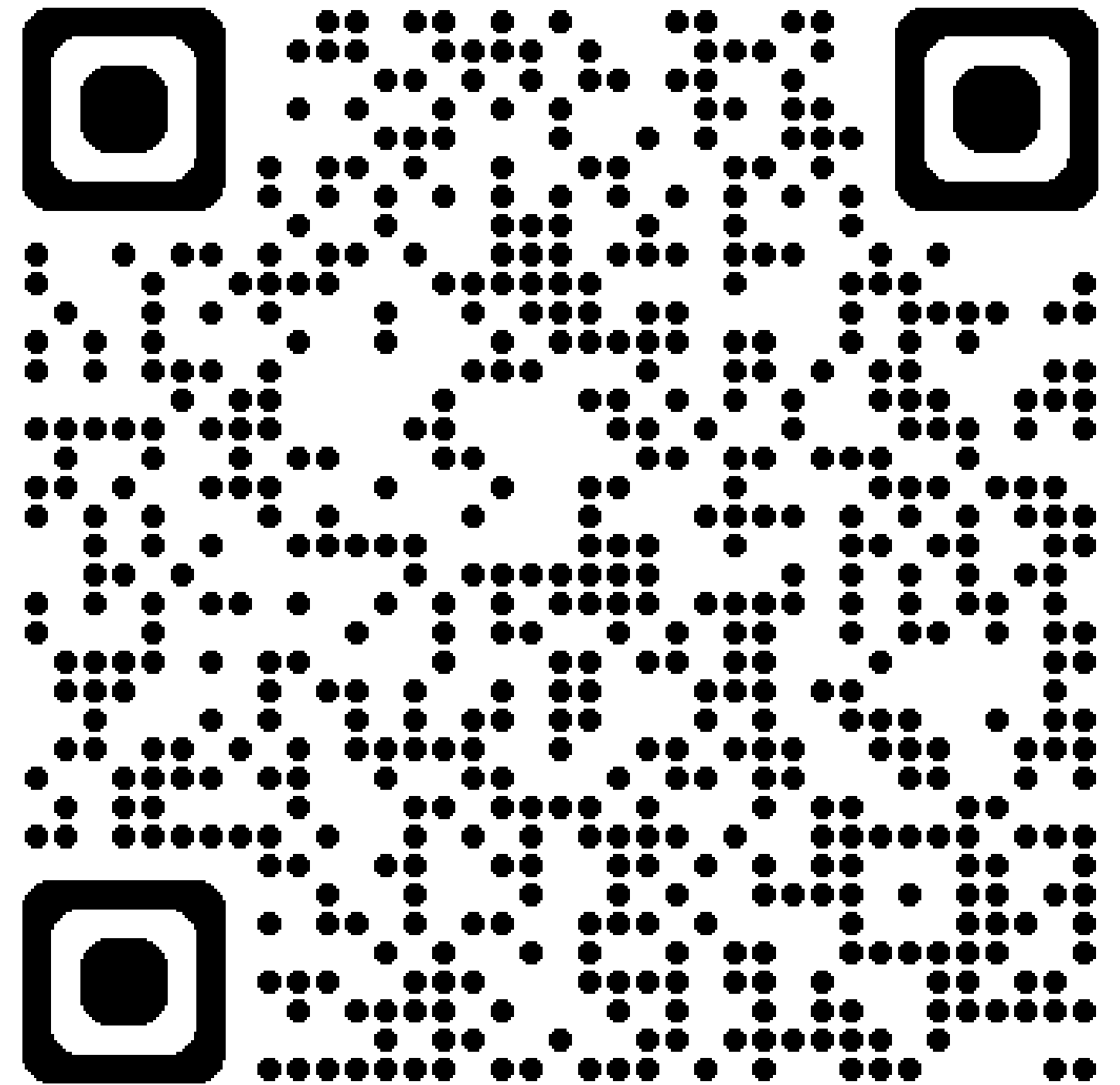
BCPOS Forestry Supervisor

magena@bouldercounty.gov

Julien Blundell

Boulder Watershed Collective

julien@boulderwatershedcollective.org



Open House Stations

- Water Resources
- Community Protection: Home Hardening/Defensible Space,
- Forestry: Treatment Planning
- Forestry: Forest Resilience
- Recreation Management
- Fire Response

