

Middle Boulder Creek Fuels Reduction Partnership Project

Community Meeting
July 31 2025



Meeting Agenda

6:00 - Welcome & Project Partner Introductions

6:10 - Project Presentation

7:00 - Q & A

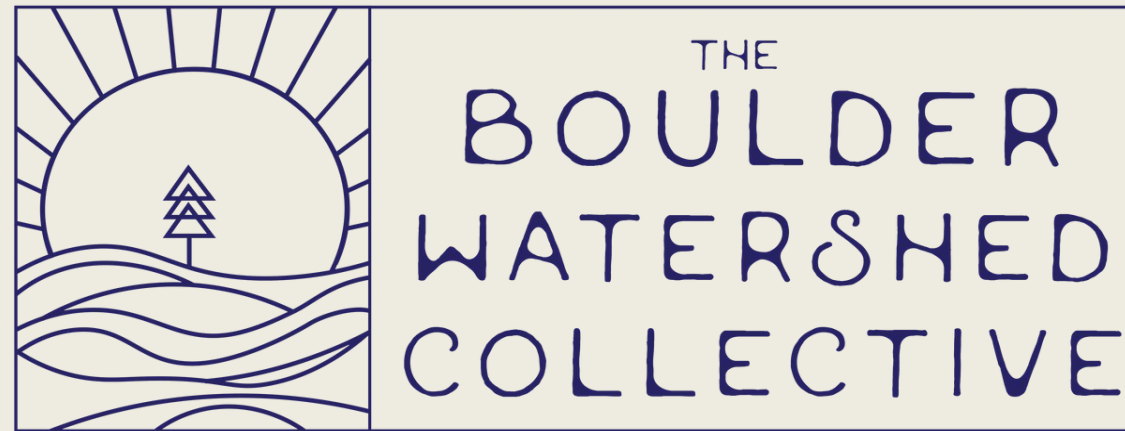
7:20 - Next Steps



Meeting Expectations

- Assume positive intent and shared commitment
- Stay focused to use our time well, clarification questions are great, try to save comments for the comment form
- Respect differences and seek to understand
- Facilitator may ask follow-up questions

Project Partners



Supported By:



COLORADO
Department of
Natural Resources



Project Background & What We've Heard



Submit clarifying questions along the way

Go to

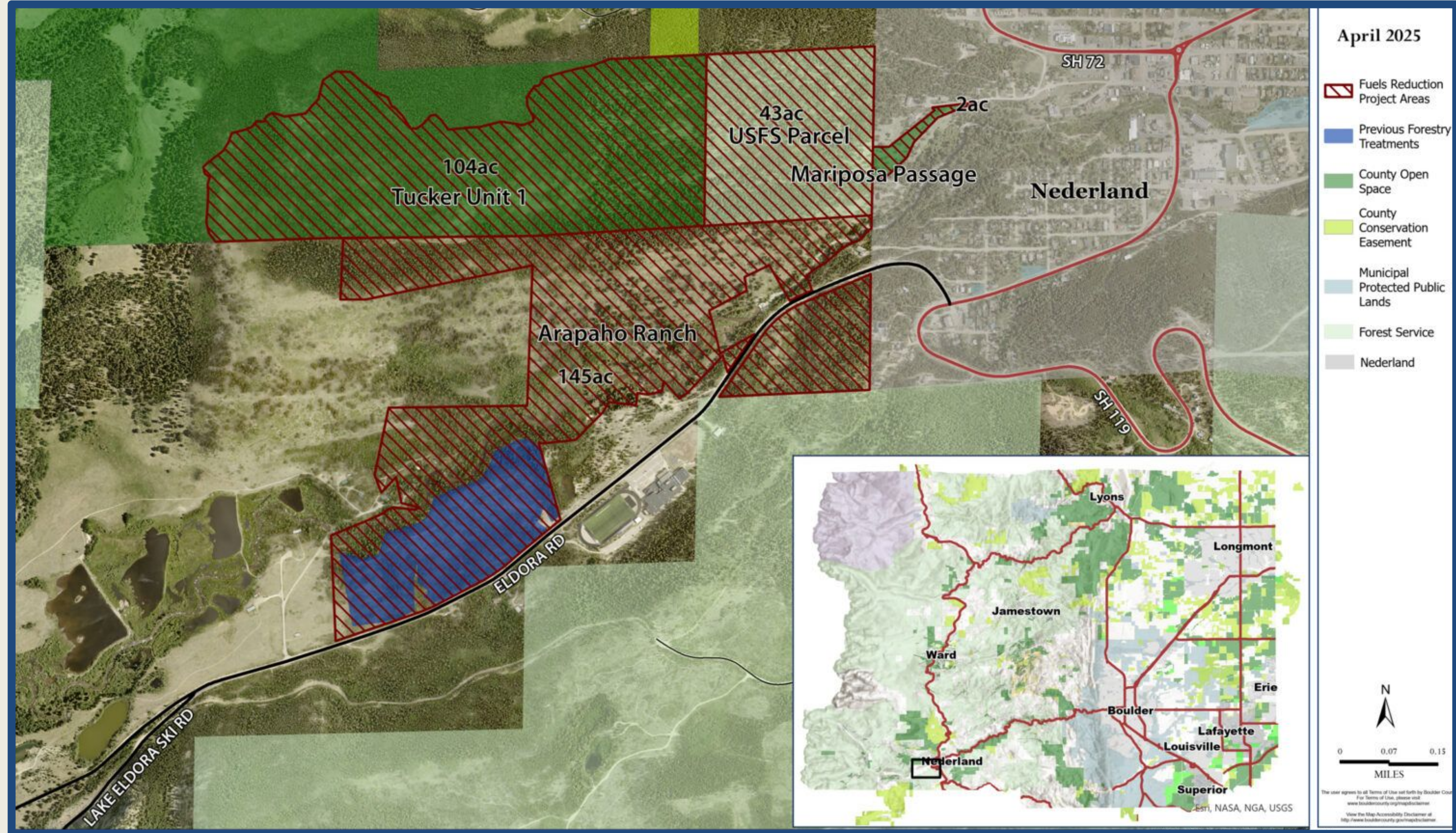
www.menti.com

Enter the code

8140 9987



Project Area



Project Objective & Benefits



PRIMARY OBJECTIVE: Decrease forest fuels and reduce the risk of severe wildfire



BENEFIT: Creating Fire Adapted Communities



BENEFIT: Sustainable and resilient forest ecosystems



BENEFIT: Protection of regional water supplies

Project Timeline: 2024 Identification & Studies

- **2024:** Nederland/Timberline FPD and Boulder County CWPPs identify area risk
- **2024:** COSWAP-LRI Grant Awarded to Boulder County and Partners
- **Summer 2024 - ongoing:** Data Collection/Monitoring

Project Timeline: 2025 Scoping

- **May - Aug:** Online Comment Solicitation
- **May 17:** Community Site Visit
- **June 12:** First Community Meeting
- **July - Aug:** Drafting Scope
- **July 31:** Second Community Meeting
- **Aug:** Finalize Scope of Work

Project Timeline: 2025 - 2-31 Implementation

- **Late Summer/Fall 2025:** Project Layout and Marking
- **Fall 2025:** RFP/Contractor Selection
- **Winter 2025/2026:** Mechanical Operations
- **Summer 2026:** Hand Cut and Close Out
- **Post Project Monitoring: 2026-2031**

* Mechanical operations may resume in Winter 26/27 if conditions in Winter 25/26 are unsuitable

What we've heard: Effectiveness

FROM THE COMMUNITY:

Balance mitigation investments with level of impact on risk reduction

What we've heard: Effectiveness

WHAT WE'RE DOING:

- Fuel reductions give fire response personnel options during a wildfire
- Partner with award-winning BC Wildfire Partners to support home hardening
- Local fire protection districts and BWC outreach to private landowners

What we've heard: Habitat, Ecology, & Wildlife

FROM THE COMMUNITY:

Wildlife habitat and ecosystem integrity are a priority

What we've heard: Habitat, Ecology, & Wildlife

WHAT WE'RE DOING:

- Create reserve areas based on internal specialist feedback
- Work with Colorado Parks & Wildlife
- Maintain varied tree size, age, and species
- Include invasive species & pest management in scope

What we've heard: Recreation

FROM THE COMMUNITY:

Recreation in the area is unmanaged and unsustainable

What we've heard: Recreation

WHAT WE'RE DOING:

- Restore and close unauthorized trails
- Rehab and restore machinery paths after treatment
- Consider seasonal wildlife closure, similar to Caribou

What we've heard: Treatment Operations

FROM THE COMMUNITY:

Use low-impact, context-sensitive methods

What we've heard: Treatment Operations

WHAT WE'RE DOING:

- Reduce machine impact with winter operations
- Responsive to changing weather and soil conditions
- Use of hand cut and pile method in sensitive areas
- Minimal hand treatment in wet (mesic) areas
- Gathering data on existing conditions to compare with monitoring data

What we've heard: Treatment Maintenance

FROM THE COMMUNITY:

Long term success requires prescribed fire and data-based decisions

What we've heard: Treatment Maintenance

WHAT WE'RE DOING:

- Pile and burn remaining slash
- Collaborate with the Sheriff's Office Wildland Fire Crew
- Gather post-treatment monitoring data
- Thin new lodgepole pine regeneration
- Monitor for invasive weeds
- Pursue future Rx broadcast burning to increase resilience

What we've heard: Additional Resources

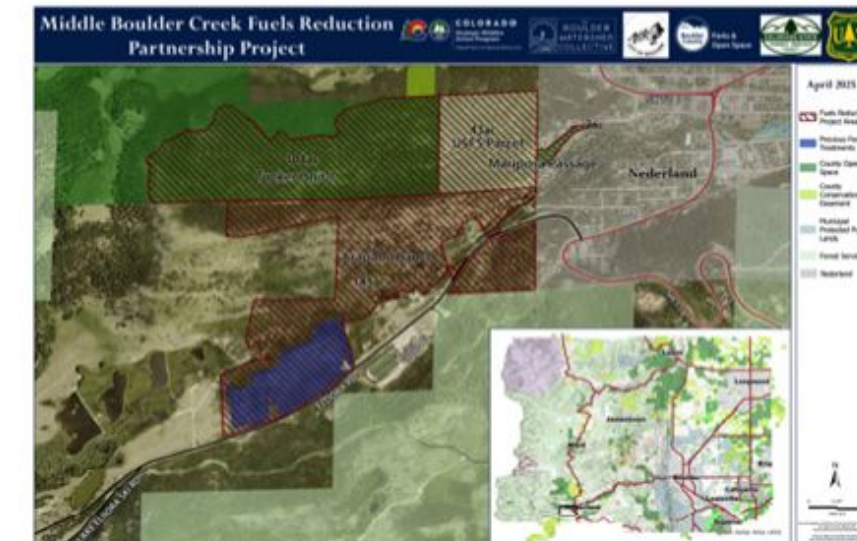
Further detail in project
FAQ available on the
webpage and inclusion of
comment-response matrix
in final scope

Middle Boulder Creek Fuel Reduction Partnership Project FAQ

General Project Description

Is this the same project as the "Tucker Property Forestry Management"?

Yes, the Middle Boulder Creek (MBC) Fuels Reduction Partnership Project includes portions of Tucker Ranch, but will also include project areas in Elk Draw, Arapaho Ranch, and potentially parts of US Forest Service (USFS) land adjacent to Tucker Ranch. Both Tucker Ranch and Elk Draw are Boulder County Parks & Open Space (BCPOS) properties. Arapaho Ranch is privately owned land and will be managed through this project in partnership with the Boulder Watershed Collective (BWC). Project organizers are currently pursuing [Good Neighbor Authority \(GNA\)](#) with the USFS to treat portions of USFS land adjacent to the Tucker Ranch property, though that work won't happen this year.



Who is leading the project?

Boulder County is managing the project and providing contractor oversight, while working in partnership with BWC to help manage the project on private lands, and to provide community engagement support. This is a collaborative project, addressing multiple values at risk, that has many partners and stakeholders, including the Nederland Fire Protection District, Colorado State

Draft Scope of Work



Draft Scope Available for Comment on the Project Webpage until August 15

- Public Comment open on project webpage
- Proofreading and comment incorporation
- Sign-off by Boulder County Parks and Open Space Forestry Interdisciplinary Team

Sign-up for Nederland-area email updates from BWC

Draft Scope - Defining Terms and Acronyms

To help you understand the scope of work, acronyms and technical terms have been defined in an 2-page glossary available on the web page.

Broad Cutting Parameters

- Retain limber pine and improve when possible
- Retain legacy trees and trees over 16" diameter at 4.5 feet above ground
- Remove conifers becoming established in aspen

Additional Considerations

- Reserve Areas: Developed with information from wildlife and plant ecology staff
- Wind Load Areas: Modeled areas that receive the highest wind load

Stand Specific Cutting Parameters

- Dry Lodgepole Prescription
- Dry Mixed Conifer Prescription
- Mesic and North Aspect Fir Prescription

PP: Ponderosa pine

DF: Douglas-fir

AS: Quaking aspen

LP: Lodgepole pine

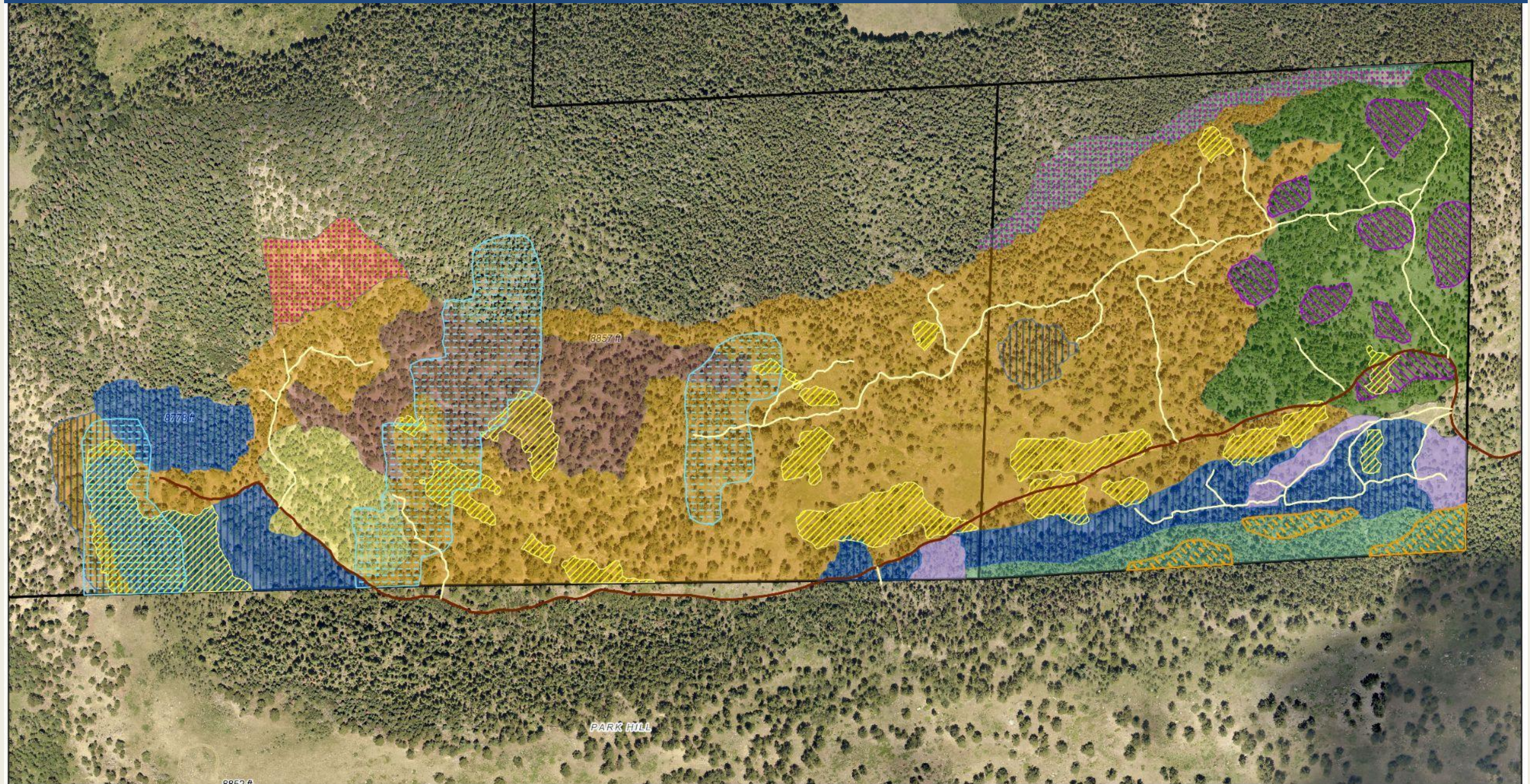
LM: Limber pine

AF: Subalpine fir

ES: Engelmann spruce

BS: Blue spruce

Tucker - Elk Draw Treatment



July 2025

- Access road
- Existing Two-Track
- Reserve

- PatchCuts
- Aspen Pockets
- WindLoadAreas

- Dry Lodgepole Pine
- Dry Mixed Conifer
- Mesic

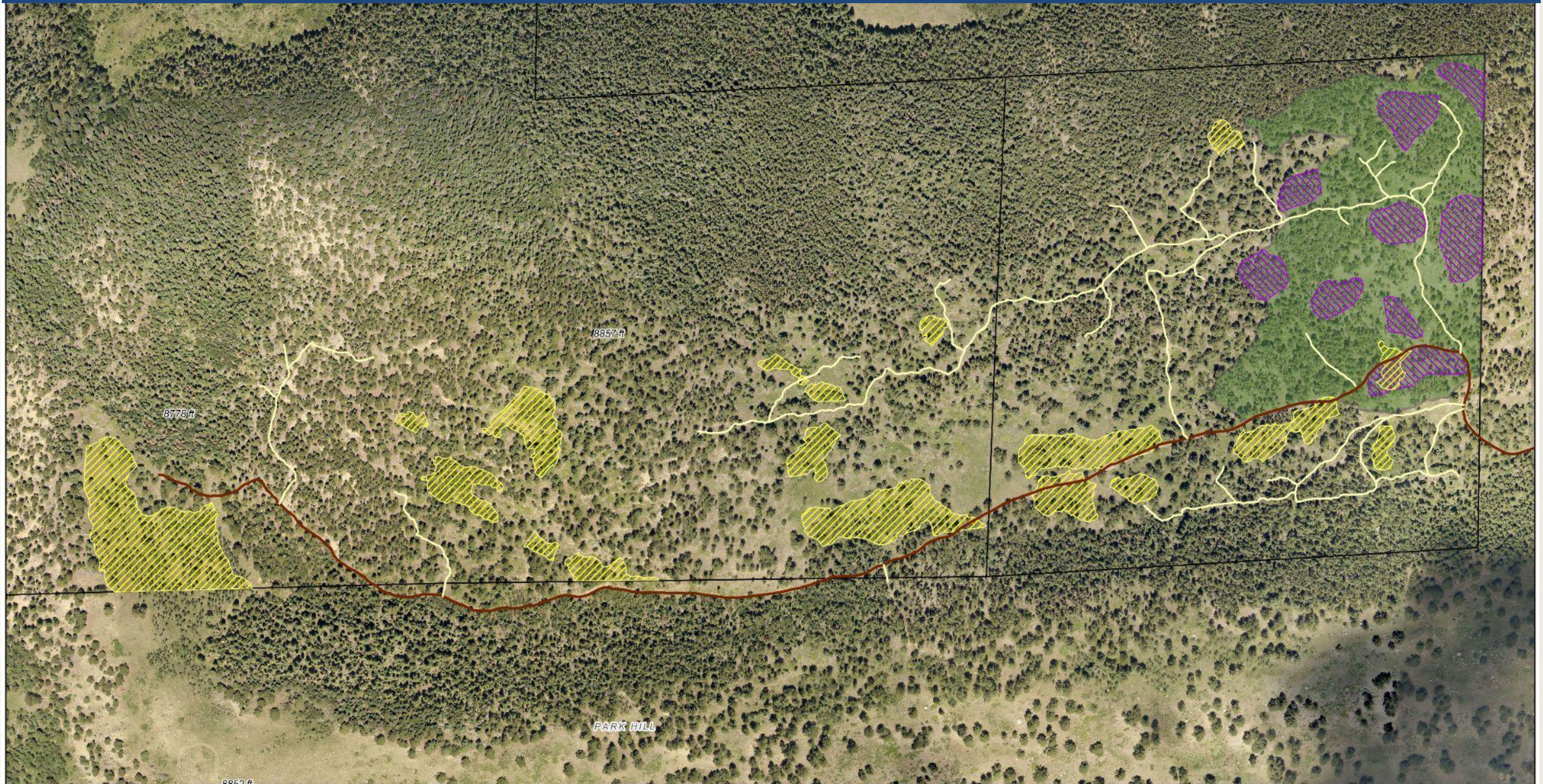
- North Aspect Fir
- Old Ponderosa Pine
- Homogenous Ponderosa Pine

- Mesic Break Hand Cut
- NorthAspectHandCut
- PotentialFutureHandCut



The user agrees to all Terms of Use set forth by Boulder County. For terms of use, please visit: www.bouldercounty.org/inapdisclaimer. To view the Map Accessibility Disclaimer, please visit: www.bouldercounty.gov/inapdisclaimer.

Dry Lodgepole Prescription

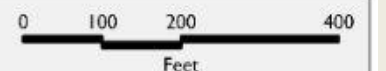


July 2025

- Access road
- Existing Two-Track

- Dry Lodgepole
- PatchCuts

- Aspen Pockets

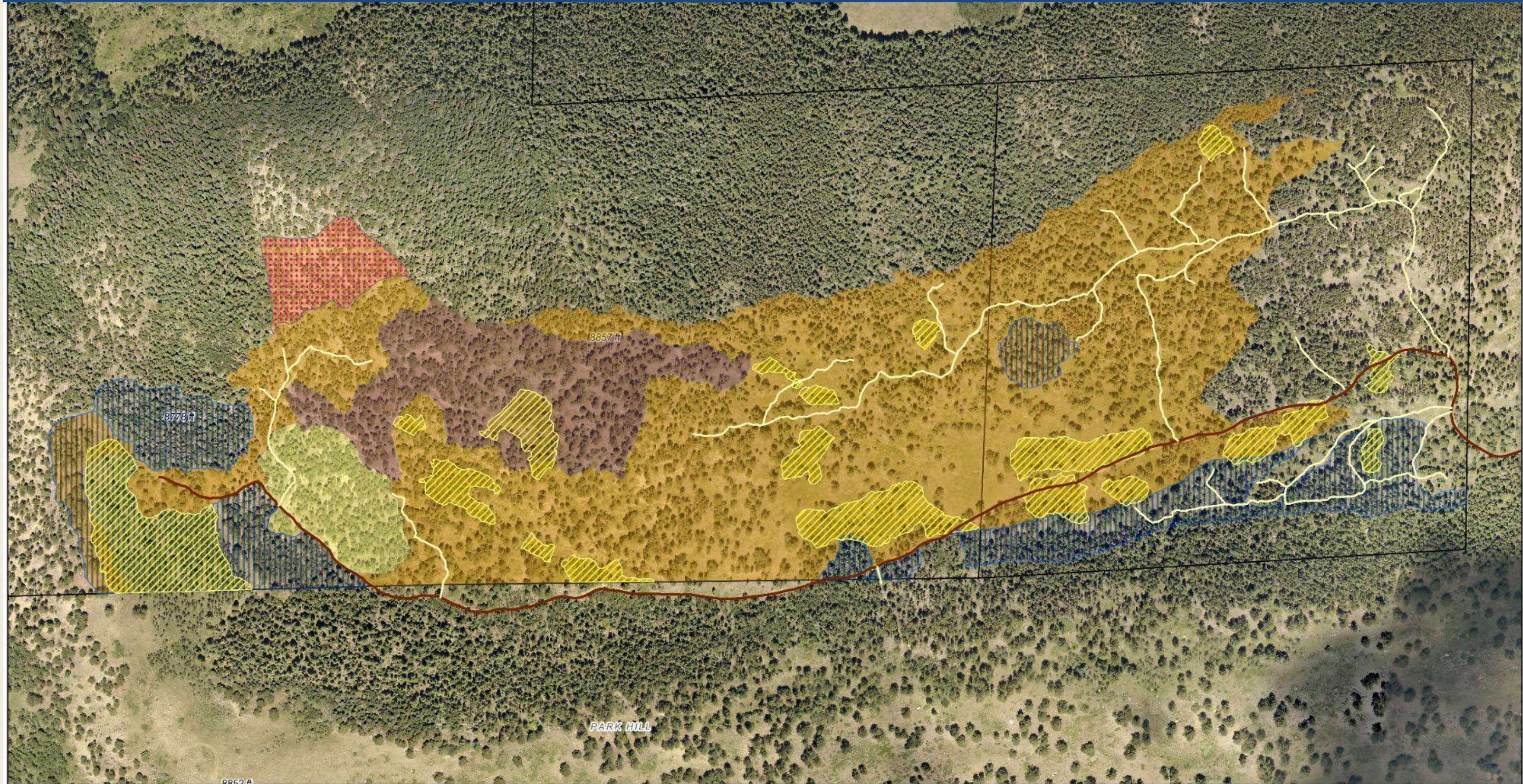


The user agrees to all Terms of Use set forth by Boulder County. For terms of use, please visit: www.bouldercounty.org/rapiddisclaimer.
To view the Map Accessibility Disclaimers, please visit: www.bouldercounty.gov/mapsdisclaimer.

Dry Lodgepole Prescription

- Series of small patch cuts totaling ~3 acres within a stand of 12.88 acres
- Remove some existing blowdown for reduction of surface fuels and retain quality CWD for ecological/wildlife purposes

Dry Mixed Conifer Prescription



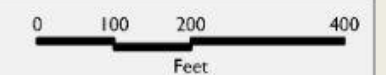
July 2025

- Access road
- Existing Two-Track

- Aspen Pockets
- Dry Mixed Conifer

- Old Ponderosa Pine
- Homogenous Ponderosa Pine

- Reserve
- PotentialFutureHandCut

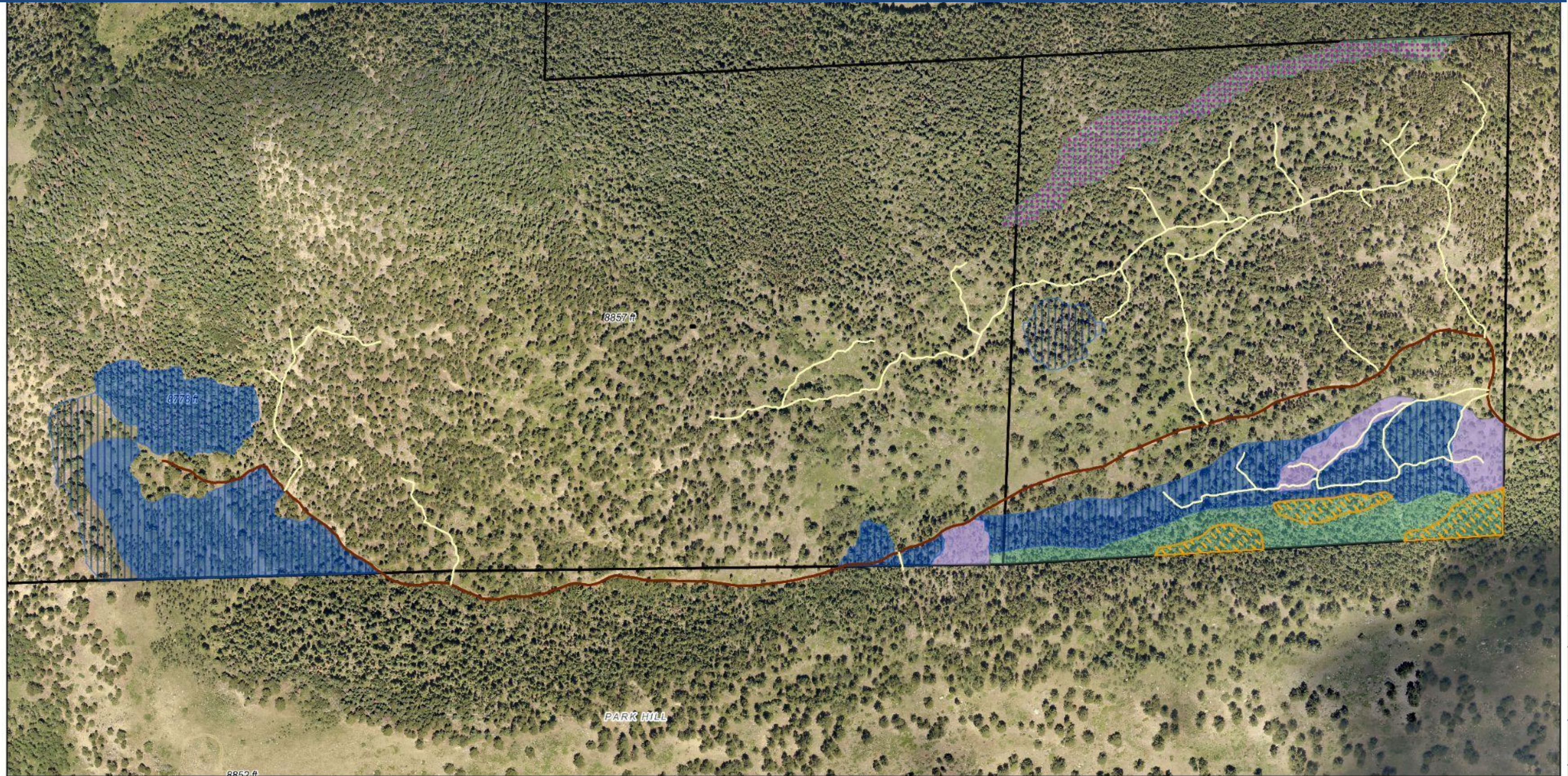


The user agrees to all Terms of Use set forth by Boulder County. For terms of use, please visit: www.bouldercounty.org/mapdisclaimer. To view the Map Accessibility Disclaimer, please visit: www.bouldercounty.gov/mapdisclaimer.

Dry Mixed Conifer Prescription

- BA: 142.3 ft²/ac → 98.5 ft²/ac & Trees Per Acre: 683.8 → 356.3
- Most removal <8 in DBH
- Prescription covers ~66 acres
- Under 8 inch DBH
 - Remove 75% LP and DF 0-8" DBH
 - Remove 75% AF 0-3" DBH
 - Remove 50% PP 0-8" DBH
- Over 8 inch DBH
 - Remove 5-10% AF 3-16" DBH
 - Remove 50% LP 8-16" DBH
 - Remove 25% DF 8-16" DBH
 - Remove 25% PP 8-16" DBH

Mesic & North Aspect Fir Prescription



July 2025

Access road

Existing Two-Track

Reserve

Mesic

North Aspect Fir

Mesic Break Hand Cut

NorthAspectHandCut

PotentialFutureHandCut

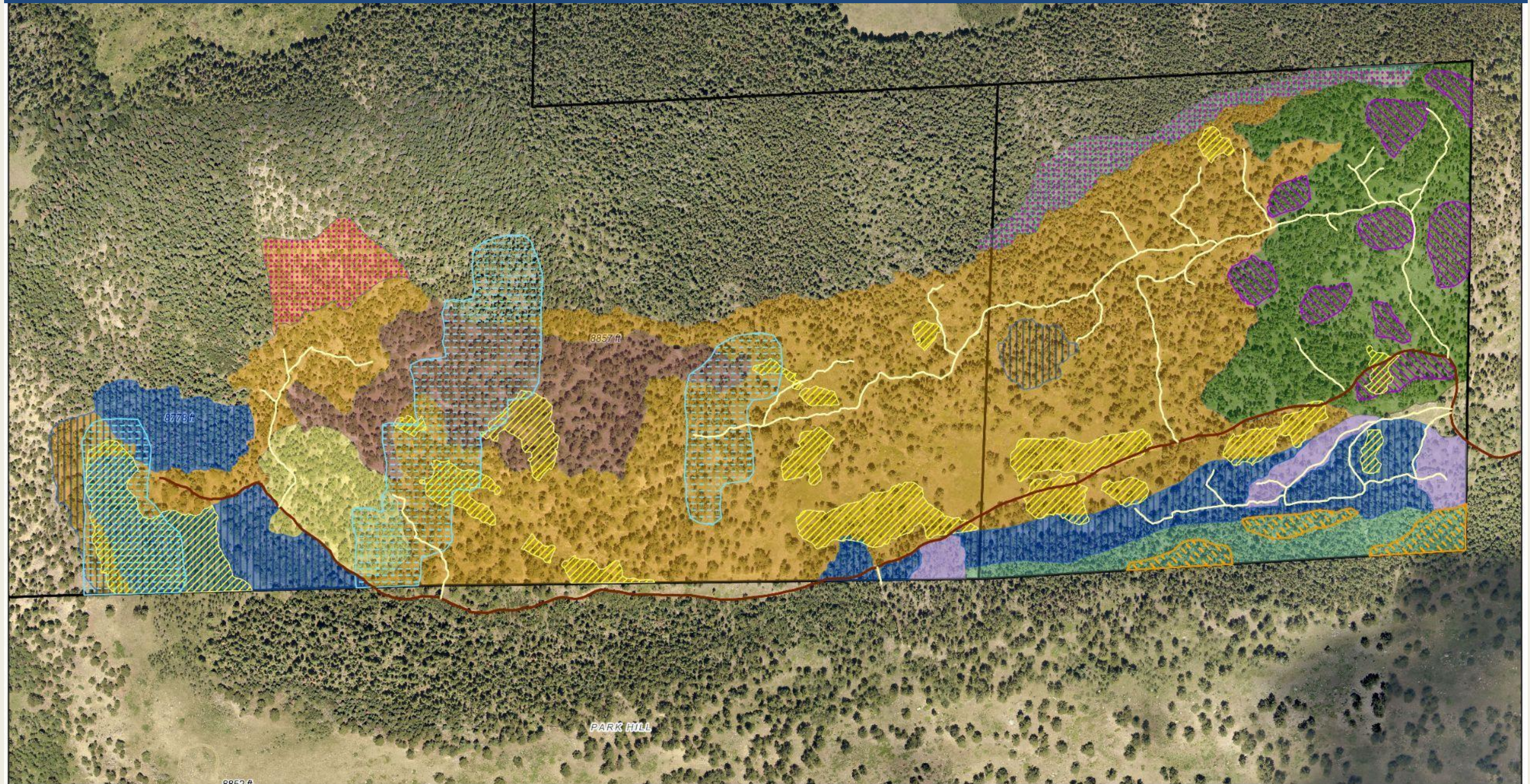
0 100 200 400
Feet

The user agrees to all Terms of Use
set forth by Boulder County. For terms of use,
please visit: www.bouldercounty.org/mapsdisc.htm.
To view the Map Accessibility Disclaimer,
please visit: www.bouldercounty.org/mapsdisc.htm.

Mesic & North Aspect Fir Prescription

- Manual saw work (hand cut and pile), only <8" DBH
- Mesic break: Reduce ladder fuels, break up canopy, enhance aspen (~1.62 ac)
- North aspect: Thin small diameter trees in defined areas (~1.16 ac)
 - Remove 75% AF, DF, and LP <5 in DBH
 - Remove 25% AF, DF, and LP 5-8 in DBH

Tucker - Elk Draw Treatment



July 2025

- Access road
- Existing Two-Track
- Reserve

- PatchCuts
- Aspen Pockets
- WindLoadAreas

- Dry Lodgepole Pine
- Dry Mixed Conifer
- Mesic

- North Aspect Fir
- Old Ponderosa Pine
- Homogenous Ponderosa Pine

- Mesic Break Hand Cut
- NorthAspectHandCut
- PotentialFutureHandCut

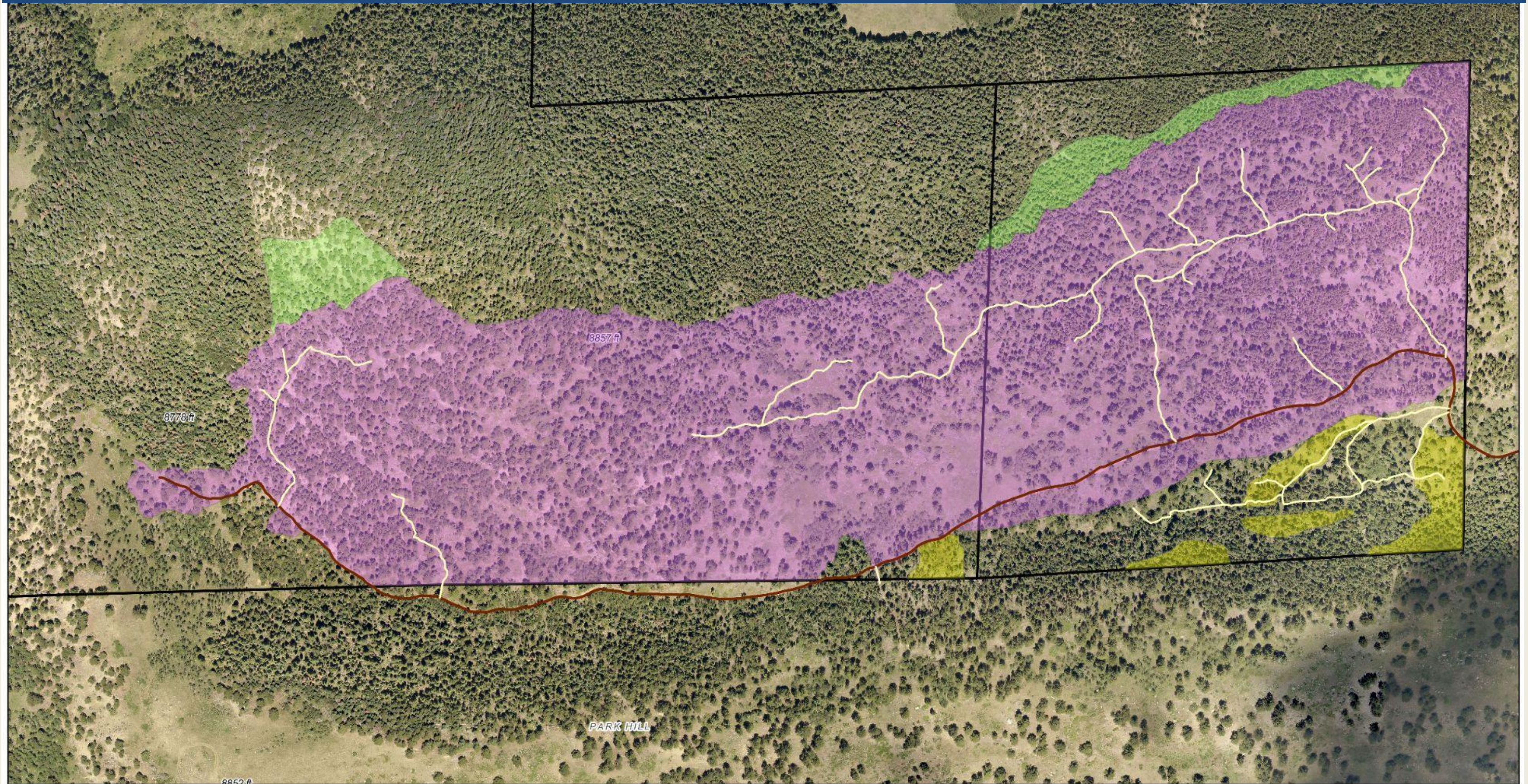


The user agrees to all Terms of Use set forth by Boulder County. For terms of use, please visit: www.bouldercounty.org/inapdisclaimer. To view the Map Accessibility Disclaimer, please visit: www.bouldercounty.gov/inapdisclaimer.

Operational Details

- **Mechanical operations:** Will take place in winter 2025-2026 within dry lodgepole and dry mixed conifer
 - Individual Tree Marking of take (cut) trees
 - Responsive timing to wildlife movement
 - Planned for one winter, but if conditions are unsuitable operations will halt and resume the following winter
- **Hand cut and pile:** Will take place in late-summer to early-fall 2026 along mesic and north aspects
- **Slash:** Accesibile slash will be ground and hauled off site, remaining slash piled and burned

Tucker - Elk Draw Treatment Methods



July 2025

— Access road

— Existing Two-Track

Hand Cut Only

Mechanical and Hand Cut

Potential Hand Cut

0 100 200 400
Feet

The user agrees to all Terms of Use
set forth by Boulder County. For terms of use,
please visit: www.bouldercounty.org/mapdisclaimer.
To view the Map Accessibility Disclaimer,
please visit: www.bouldercounty.gov/mapdisclaimer.

Maintenance

- **Ground disturbance:** Will be restored following operations when surface conditions permit
- **Invasive Weeds:** Workgroup will monitor and treat site for a minimum of 3 years
- **Regeneration:** Regeneration will be thinned in ~12-20 years
- **Blowdown and Disease:** Forestry workgroup will monitor for excessive blowdown and insect/disease issues
- **Slash:** will be burned by BC Sheriff's Office Wildland Fire Crew when piles have cured and conditions are suitable

Questions?



Submit comments by August 15

Property Search Jobs News Elections County Government Departments Contact Select Lang

COMMUNITY SUPPORT & HOUSING > OPEN SPACE & RECREATION > PROPERTY & LAND > ROADS & TRANSPORTATION > ENVIRONMENT & SUSTAINABILITY > SAFETY & LAW > LICENSES, PERMITS & RECORDS >

Project Benefits

Public safety for nearby communities, including the Town of Nederland.
Protection of regional water supplies.
Sustainable and resilient forest ecosystems.

By managing forest fuels and improving forest resiliency, this project aims to benefit both people and ecosystems. Working together with communities across land boundaries improves our ability to take on the challenges of wildfire risk and keep Colorado's forests and communities strong.

Community Meetings

County and The Boulder Watershed Collective will host a final community meeting to introduce and answer initial questions about the project scope, which will be posted and open for online comment Aug. 4 through Friday, Aug. 15.

Thursday, July 31 from 6 – 7:30 p.m.
Nederland Community Center
[Highway 72 North, Nederland](#)
[Up to Attend](#)

Public Comments

Community members are encouraged to submit comments and attend community meetings. Comments submitted before July 29 will be considered and common themes will be addressed at the meeting. Comments will be accepted until Aug. 1. Project managers will consider changes that align with the project's goals.

[Submit Comments](#)

[View submitted comments](#)

The Draft Scope of Work will be posted shortly after the July 31 meeting. Public comments on the draft will be accepted Aug. 4-15.

Scope of Work Comments

Community members are encouraged to submit comments on the draft scope of work. Comments will be accepted through Friday, Aug. 15. Project managers will consider changes that align with the project's goals.

[Submit Comments on the Draft Scope of Work](#)

[View submitted comments on the draft plan](#)



boco.org/MBCForestry

Project Contacts

Michael Agena

BCPOS Forestry Supervisor

magena@bouldercounty.gov



**Parks &
Open Space**

Julien Blundell

Boulder Watershed Collective

julien@boulderwatershedcollective.org

