



Boulder County

# VISION ZERO ACTION PLAN

Boulder Board of County Commissioners (BOCC)

August 28, 2025



# Requested Action

- Adoption of the Boulder County Vision Zero Action Plan



# Outline

---

- Background
- Community Engagement
- Safety Analysis
- Action Plan
- Next Steps



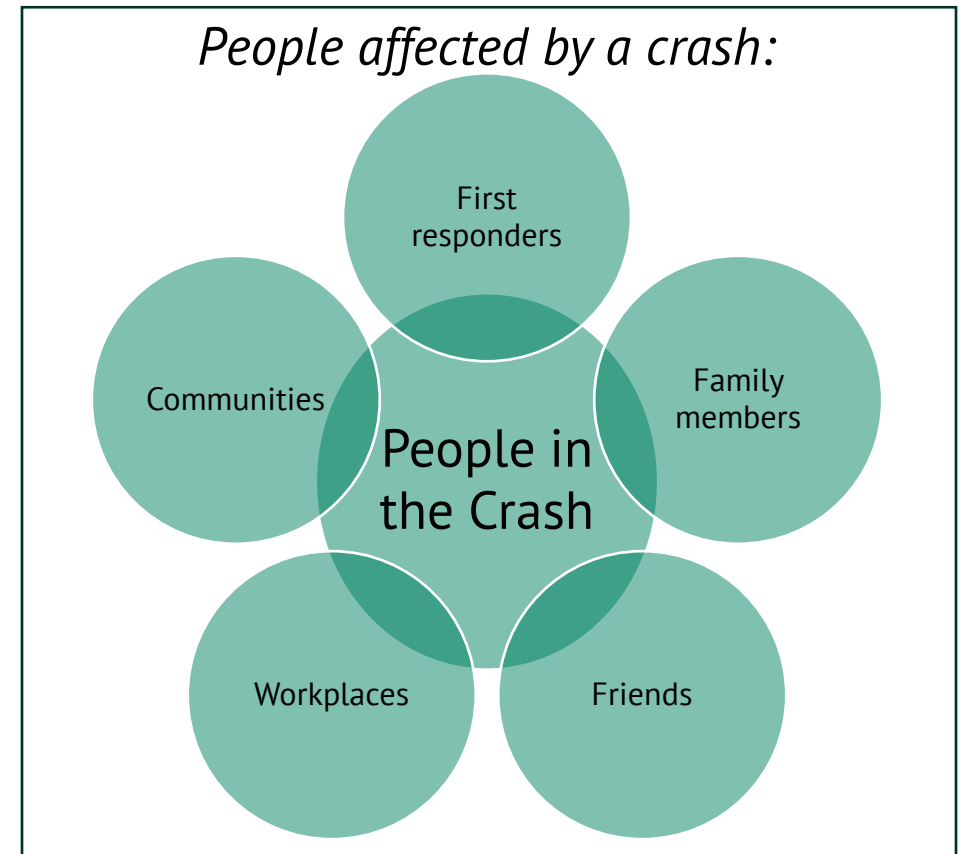
# Background

---



# Why Vision Zero

- Vision Zero: eliminate fatal and serious injury traffic crashes
- 2035 Goal in Boulder County Transportation Master Plan (2020)
- *Even one traffic-related death is too many*

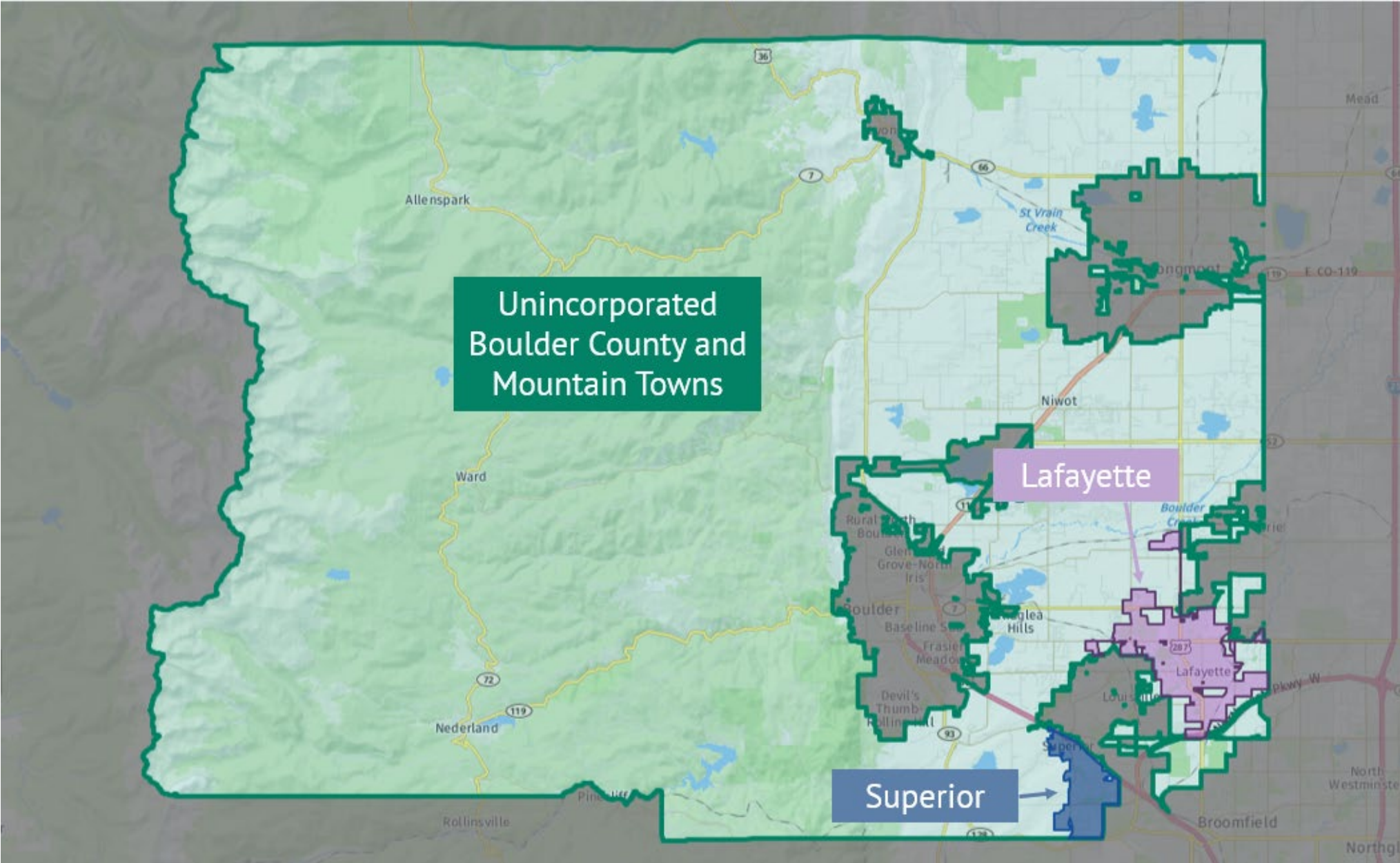


# Overview

- Safe Streets and Roads for All (SS4A) grant funding for the development of Vision Zero Action Plans for transportation safety
- Began Spring 2024
  1. **Boulder County** (unincorporated, state highways, Jamestown, Nederland, and Ward)
  2. **City of Lafayette** (adopted July 2025)
  3. **Town of Superior** (adopted Aug. 2025)



# Study Area



# Plan Outline

---

- Executive Summary
- 1-Intro
- 2-Community Engagement
- 3-Safety Data Analysis
- 4-How We Will Achieve Vision Zero
- 5-Action Plan
- 6-Next Steps
- Appendices



# Community Engagement

---



# Community Engagement

- Steering Committee
- Events/Meetings
- Online Surveys and Interactive Map
- Online Public meeting
- [Website](#) with informational videos



# Community Engagement - Phases

- Phase 1: Safety concerns
- Phase 2: Tools (“countermeasures”) and weighting of factors in scoring
- Phase 3: Feedback on draft plan



# Community Engagement – Equity Highlights

- Language Access
  - Bilingual online surveys and interactive map
  - Bilingual boards, business cards, flyers
  - Offered Spanish interpretation
  - Spanish subtitles for informational videos
- Other
  - Meeting presentations to Mobility Access Coalition, Cultural Brokers
  - Mobility for All Ambassadors on Steering Committee
  - Equity as factor in scoring

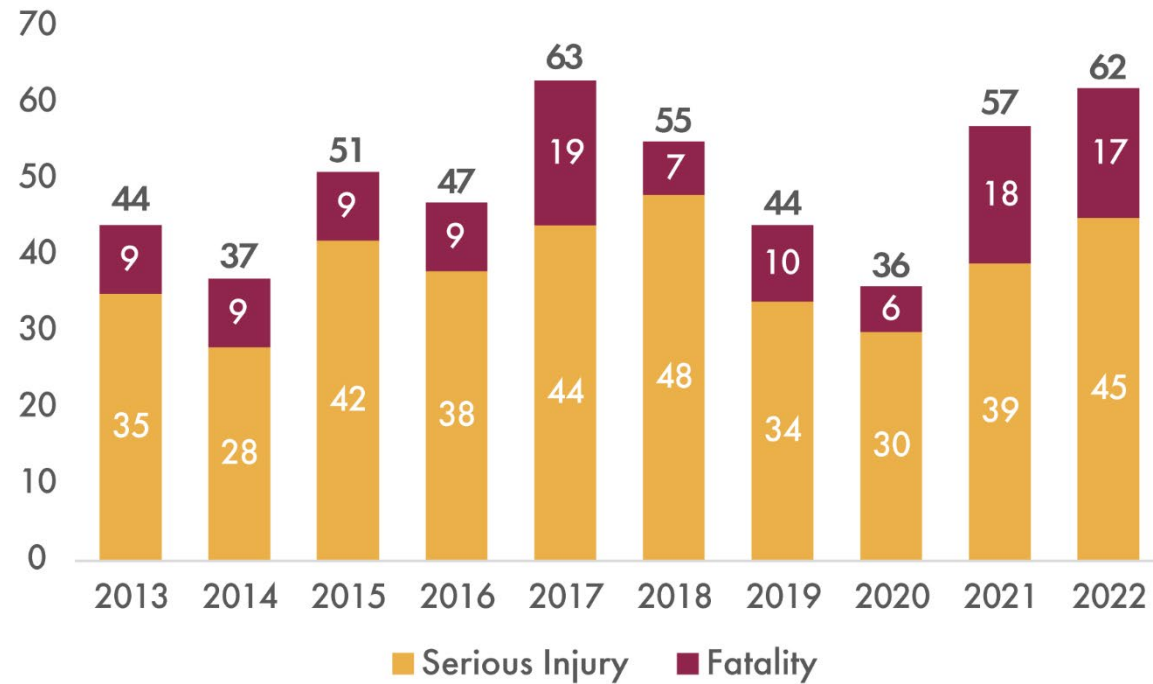


# Safety Analysis

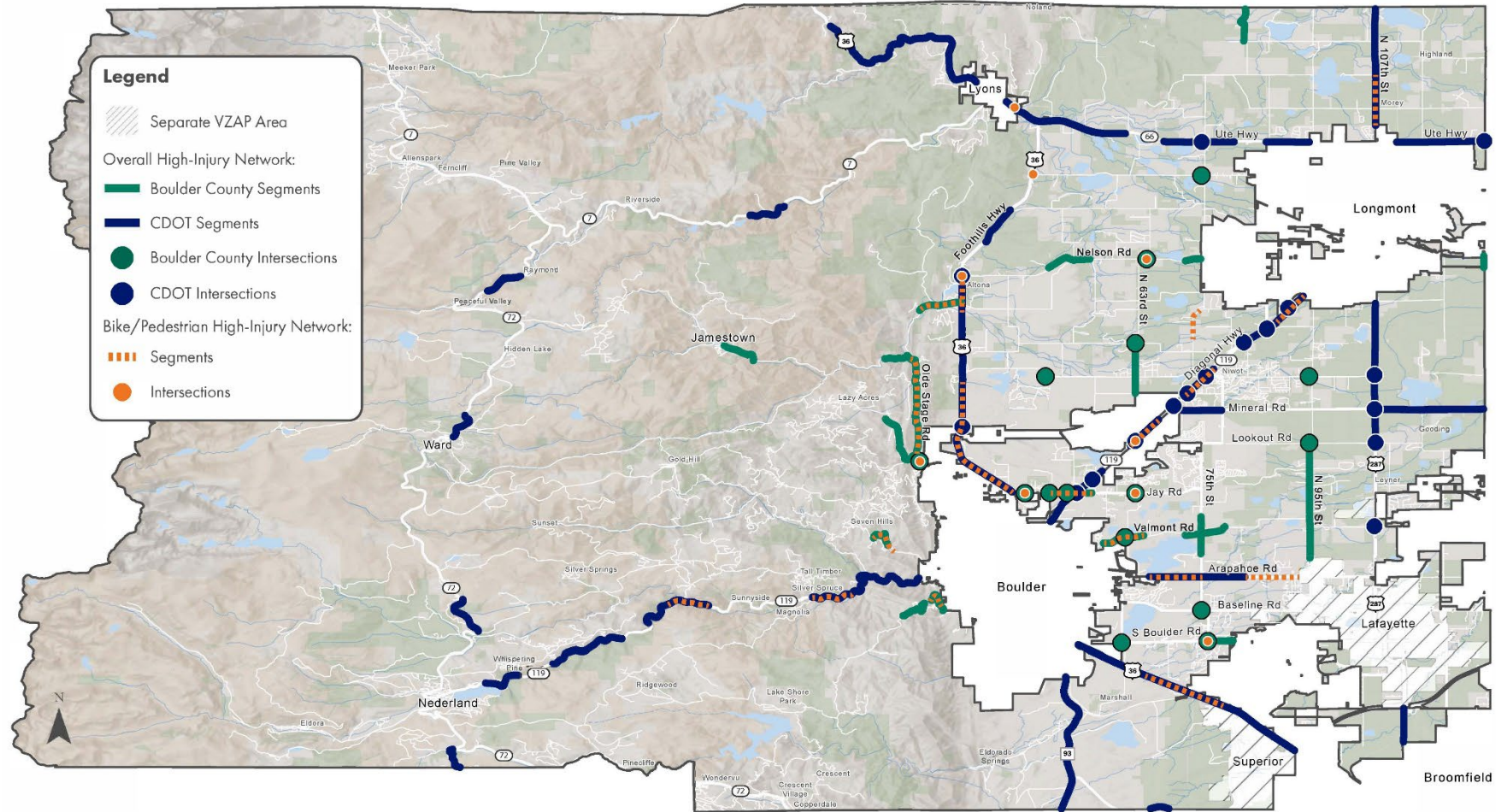
---



# Severe Crash Trends

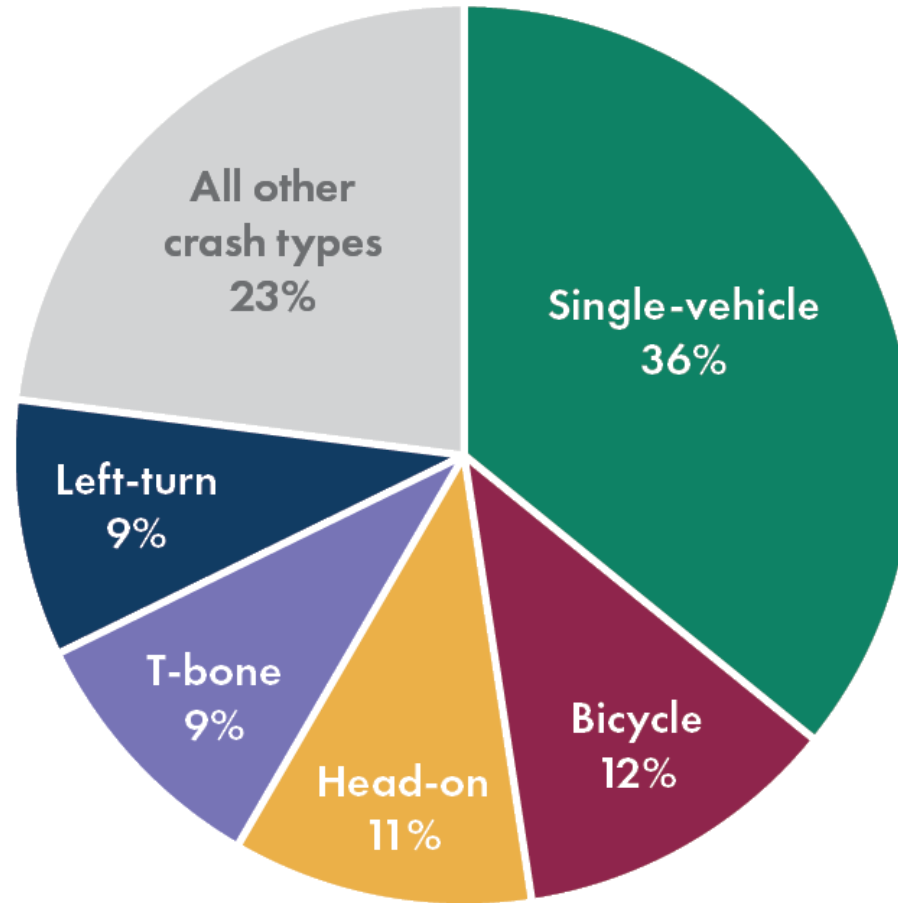


# High-Injury Network (HIN)



# Top Severe Crash Types

The top five serious injury and fatal crash types account for 77% of the serious injury and fatal crashes.



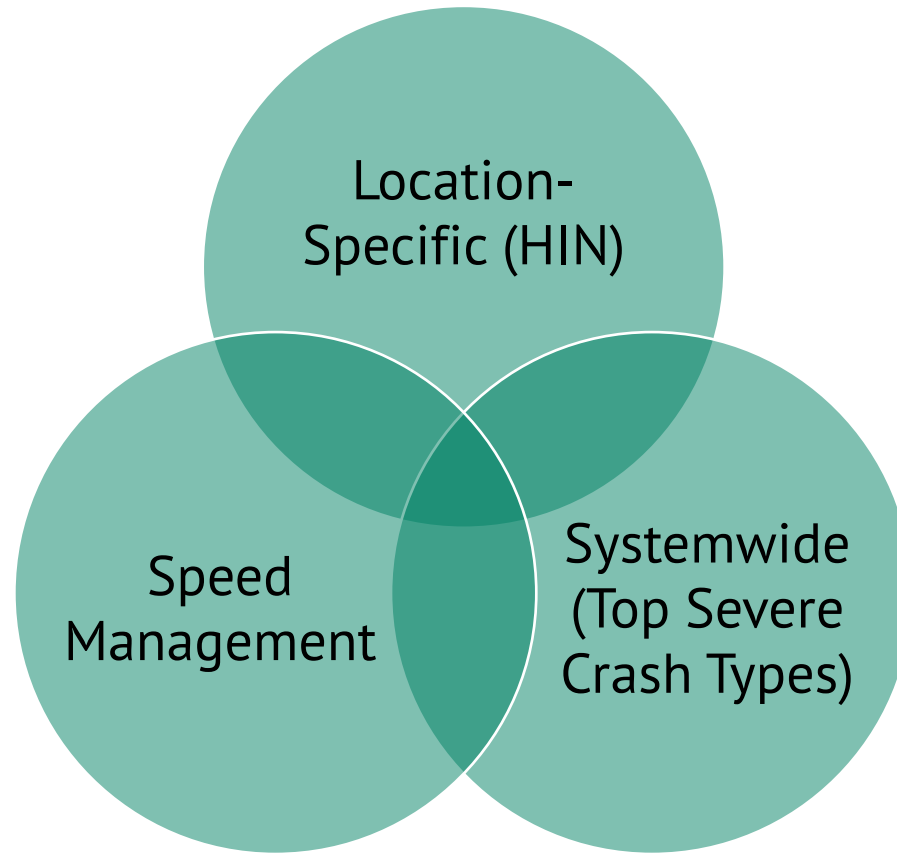
# Action Plan

---



# Three-Pronged Approach

---



# Actions Already Underway - Engineering

- Guidance/Analysis
  - Guidance Documents/Multimodal Transportation Standards Update
  - Safe Routes to School Vision Zero Action Plan
- Implementation
  - Regional Corridors (e.g., **CO 119-Diagonal Bikeway**, US 36-North Foothills, US 287)
  - Other County Projects (Transportation Sales Tax-funded)



# Actions Already Underway – Enforcement, Education/Communication

- Enforcement
  - Automated Speed Enforcement
- Education/Communication
  - Consistent Countywide Vision Zero Branding and Messaging
  - Safety Messaging
  - **World Day of Remembrance for Road Traffic Victims**

## **WORLD DAY** **OF REMEMBRANCE**

FOR ROAD TRAFFIC VICTIMS IN THE U.S.



# Actions Already Underway - Other

- Other
  - Collaboration with CDOT
  - Crash Analysis Team (CAT)
  - Funding Source Identification
  - Transportation Safety Legislation
  - **Vision Zero Community Partnership (VZCP)**



# Immediate Actions (Proposed)

- Engineering
  - **County HIN Fact Sheet Project Recommendation Implementation**
  - Single-Vehicle and/or Bicycle Crash Analysis
- Other
  - CDOT HIN Data Transfer
  - Vision Zero Analysis Tool
  - Vision Zero Reporting

## > LEFTHAND CANYON DRIVE

### RECOMMENDATIONS

#### ROADWAY

- ✓ Evaluate changing the speed limit in both directions to 25 mph (injury crashes, overturning crashes, pedestrian fatality) **\$**
- ✓ Evaluate need for guard rails through S-Curve (overturning crashes) **\$\$\$**
- ✓ Review and maintain foliage and clearance distance to trees along curves (line of sight) **\$\$**
- ✓ Consider prohibiting passing through subject area due to high pedestrian, bicycle, and parked car activity (bicycle crash, pedestrian crash) **\$**

#### PEDESTRIAN/BICYCLE FACILITIES

- ✓ Install "Motorist Must Give Bicycles 3 FT Clearance" (R4-50\_CO) signs in the westbound direction (improved signage) **\$**

#### SIGNING AND STRIPING

- ✓ Install Curve Warning (W1-4, W1-10e) sign for curve through study area (overturning crashes, fixed object crash) **\$**
- ✓ Add Chevron (W1-8) signs in both directions at curves **\$**
- ✓ Install Curve Warning (W1-4, W1-10e) sign for curve through study area (overturning crashes, fixed object crashes) **\$**
  - Westbound chevrons to the west of Geer Canyon Drive
  - Eastbound chevrons to the east of Geer Canyon Drive



# Next Steps

---

- Finalize/adopt Plan
- Refine and prioritize actions and incorporate into workplans
- Continue ongoing programs and projects that are already underway, starting on other key items identified through the refinement above
- Pursue additional funding
- Monitor and evaluate effectiveness
- Report on progress

# Staff Recommendation

- BOCC adoption of the Boulder County Vision Zero Action Plan



# Contacts

## Project Contacts

### **Liviana Lewin, PE**

Vision Zero Program Manager  
Community Planning & Permitting Department  
[visionzero@bouldercounty.gov](mailto:visionzero@bouldercounty.gov)

### **Alex Hyde-Wright**

Regional Multimodal Planning Division Manager  
Community Planning & Permitting Department  
[ahyde-wright@bouldercounty.gov](mailto:ahyde-wright@bouldercounty.gov)

## Project Website



[boco.org/visionzeroactionplan](https://boco.org/visionzeroactionplan)

